



April 24, 2017

Mr. Matt Lepore, Director  
Colorado Oil and Gas Conservation Commission  
1120 Lincoln Street, Suite 801  
Denver, CO 80203

**RE: COGCC Rule 318A.e.: Proposed Wellbore Spacing Unit**

Boomerang 33N-6C-M  
5N-66W Sec. 5: NW, W2NE; Sec. 6: N2  
5N-67W Sec 1: E2NE  
654.994764 Acres

Dear Mr. Lepore,

Synergy Resources Corporation (Synergy) is planning to drill the above referenced well in accordance with the provisions set out in COGCC Rule 318A.e. Synergy's proposed wellbore spacing unit consists of:

Boomerang 33N-6C-M  
5N-66W Sec. 5: NW, W2NE; Sec. 6: N2  
5N-67W Sec 1: E2NE  
654.994764 Acres

Synergy is not the only owner within the proposed wellbore spacing unit and hereby certifies to the Director that a thirty day (30-day) notice has been given by certified mail to all owners in the proposed wellbore spacing unit, as required by COGCC Rule 318A.e. (6). Copies of the required notification letters are on file at Synergy's office. The required thirty (30) day notice period has elapsed absent the receipt by Synergy of any objection to their proposal by the owner(s) within the proposed spacing unit for the subject well. We have not received any objections to such well location or proposed spacing unit, therefore, Synergy Resources hereby requests the Director to approve the well.

Enclosed is the Proposed Spacing Unit Plat to assist in your review and approval of Synergy's proposed Application for Permit to Drill (APD) for Boomerang 33N-6C-M well. Synergy respectfully requests the COGCC to review the enclosed information and approve the exception location waiver request per Surface Use Agreement and APD for Boomerang 33N-6C-M.

Thank you,

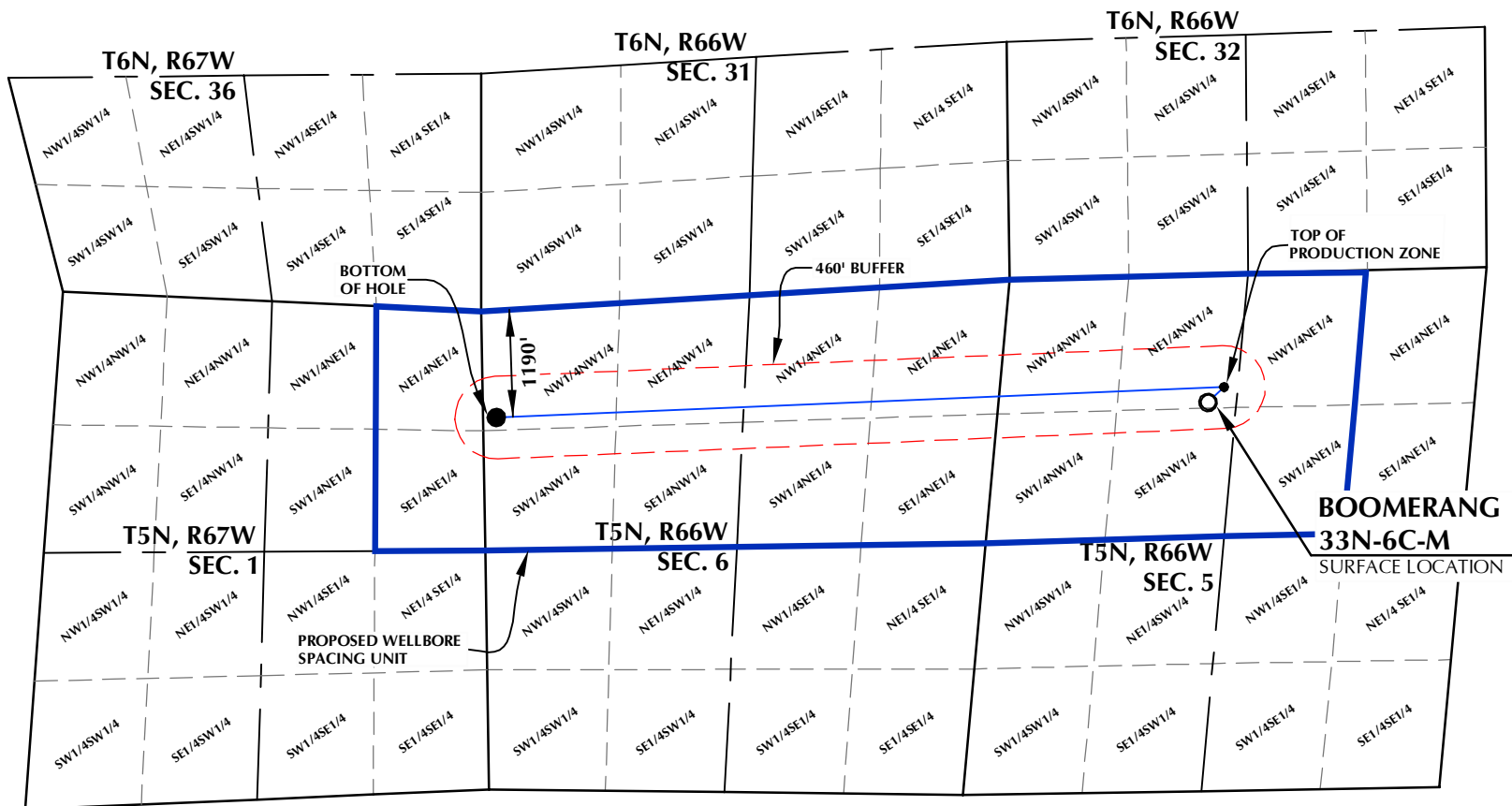
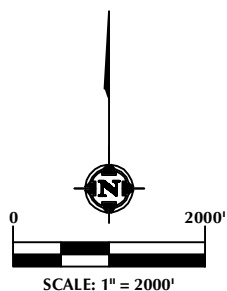
*Erin Ekblad*

Erin Ekblad  
Manager of Regulatory Affairs  
Synergy Resources Corporation

Attachment: Proposed Spacing Unit Plat

DISTANCE FROM COMPLETED  
PORTION OF WELLBORE TO  
NEAREST UNIT BOUNDARY= 1190'

# BOOMERANG 33N-6C-M WELLBORE SPACING UNIT



**SURFACE LOCATION**  
GROUND ELEVATION= 4769.3'  
LATITUDE= 40.433249°  
LONGITUDE= -104.803566°  
1/4 1/4: NE1/4 NW1/4

**TOP OF PRODUCTION**  
LATITUDE= 40.433713°  
LONGITUDE= -104.802926°  
1/4 1/4: NE1/4 NW1/4

**BOTTOM HOLE LOCATION**  
LATITUDE= 40.432951°  
LONGITUDE= -104.832019°  
1/4 1/4: NW1/4 NW1/4

## WELL PAD - BOOMERANG 21-5 PAD

BOOMERANG 33N-6C-M  
WELLBORE SPACING UNIT  
1421' FNL & 2327' FWL, LOT 2 (NENW) (SURFACE)  
1256' FNL & 2488' FWL, LOT 2 (NENW) (TOP OF PRODUCTION)  
LOCATED IN SECTION 5  
1190' FNL & 150' FWL, LOT 2 (NWNW) (BOTTOM)  
LOCATED IN SECTION 6  
T5N, R66W, 6TH P.M.  
WELD COUNTY, COLORADO



**SRC ENERGY**  
1625 Broadway, Suite 300  
Denver, Colorado 80202



## CONSULTING, LLC

**SHERIDAN OFFICE**  
1095 Saberton Avenue  
Sheridan, Wyoming 82801  
Phone 307-674-0609

**LOVELAND OFFICE**  
1635 Foxtrail Drive, Suite 204  
Loveland, Colorado 80538  
Phone 970-776-4331

|               |        |                |        |
|---------------|--------|----------------|--------|
| DRAFTED BY:   | LMO    | CHECKED BY:    | JRS    |
| DATE DRAFTED: | 3/6/17 | DATE SURVEYED: | 3/1/17 |
| REVISED:      |        | FILE NAME:     | 16-121 |

## NOTES:

1. DRAWING LATITUDE AND LONGITUDE COORDINATES ARE NAD 83 (2011)(EPOCH:2010)
2. ELEVATION BASED ON NAVD88 (GEOID12B)
3. BASIS OF BEARING DERIVED FROM COLORADO COORDINATE SYSTEM OF 1983 NORTH ZONE.
4. ALL MEASURED DISTANCES ARE GRID.  
COMBINED SCALE FACTOR: .99973538 CALCULATED FROM THE W. 1/4 CORNER OF SECTION 5, T5N, R66W