



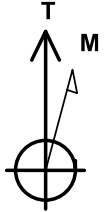
Project: SEC 5-T5N-R66W
Site: Boomerang 21-5
Well: Boomerang 33C-6-M
Wellbore: OH
Design: Plan #1

SECTION DETAILS									
MD	Inc	Azi	TVD	+N/-S	+E/-W	Dleg	TFace	VSect	Target
0.00	0.00	0.00	0.00	0.00	0.00	0.00	0.00	0.00	
300.00	0.00	0.00	300.00	0.00	0.00	0.00	0.00	0.00	
682.50	7.65	91.50	681.36	-0.67	25.49	2.00	91.50	-25.45	
6475.53	7.65	91.50	6422.84	-20.85	796.40	0.00	0.00	-795.30	
7567.79	90.67	268.13	7144.00	-47.40	158.55	9.00	176.60	-156.92	
15648.52	90.67	268.13	7050.00	-310.56	-7917.35	0.00	0.00	7923.27	PBHL

PROJECT DETAILS: SEC 5-T5N-R66W
Geodetic System: US State Plane 1983
Datum: North American Datum 1983
Ellipsoid: GRS 1980
Zone: Colorado Northern Zone
Colorado Northern Zone
System Datum: Mean Sea Level

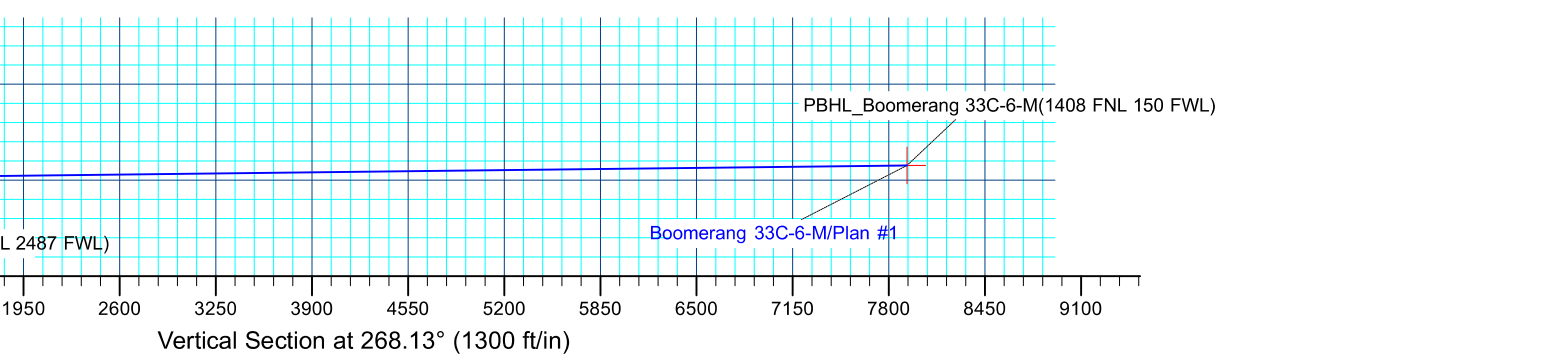
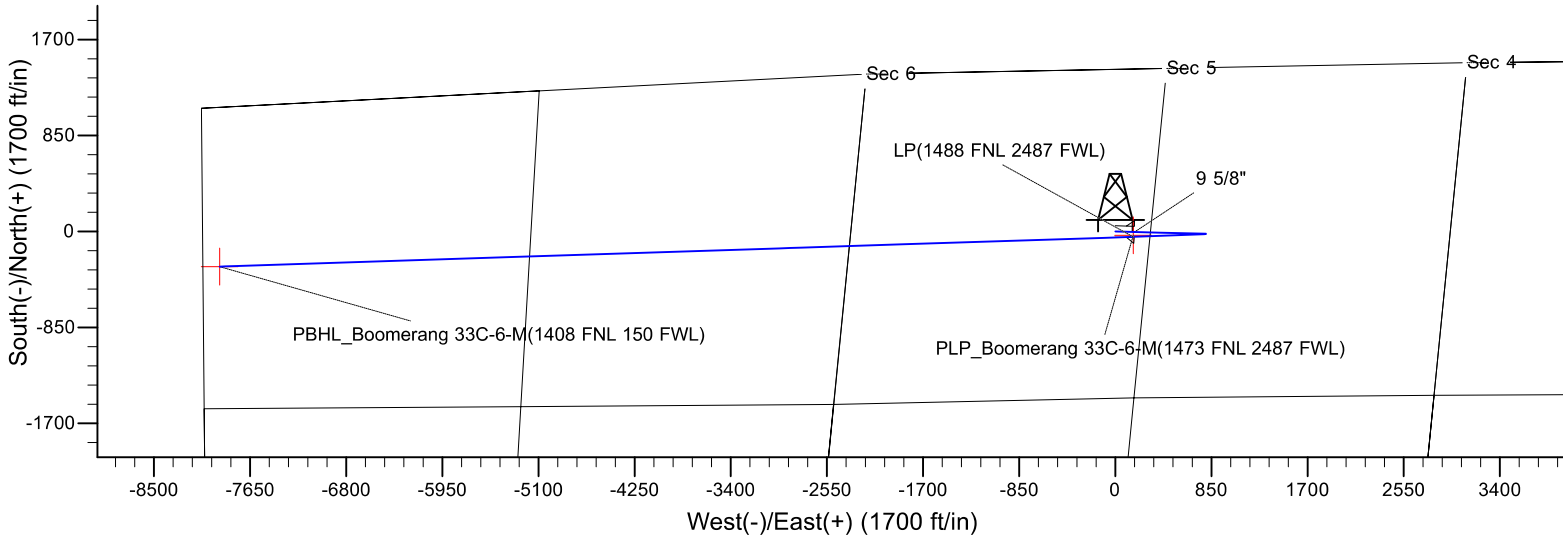
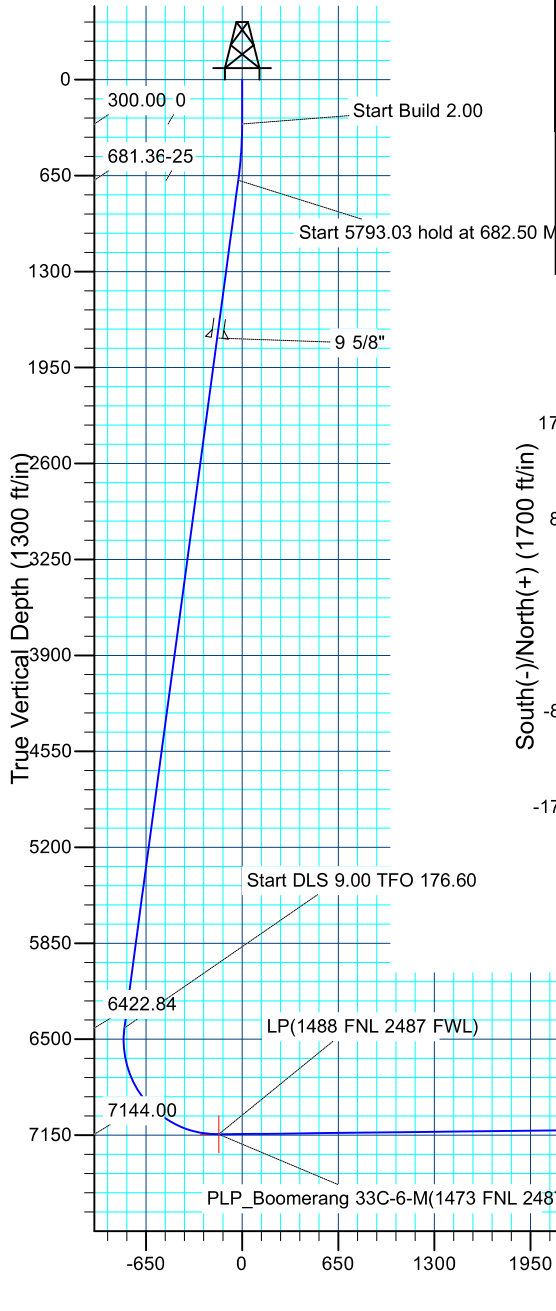
DESIGN TARGET DETAILS									
Name	TVD	+N/-S	+E/-W	Northing	Easting	Latitude	Longitude	Shape	
PBHL	7050.00	-310.56	-7917.35	1401049.36	3185957.41	40.4323520	-104.8320120	Point	
- plan hits target center									
PLP	7144.00	-33.50	158.12	1401389.83	3194030.45	40.4331160	-104.8030030	Point	
- plan misses target center by 13.90ft at 7567.77ft MD (7144.00 TVD, -47.40 N, 158.57 E)									

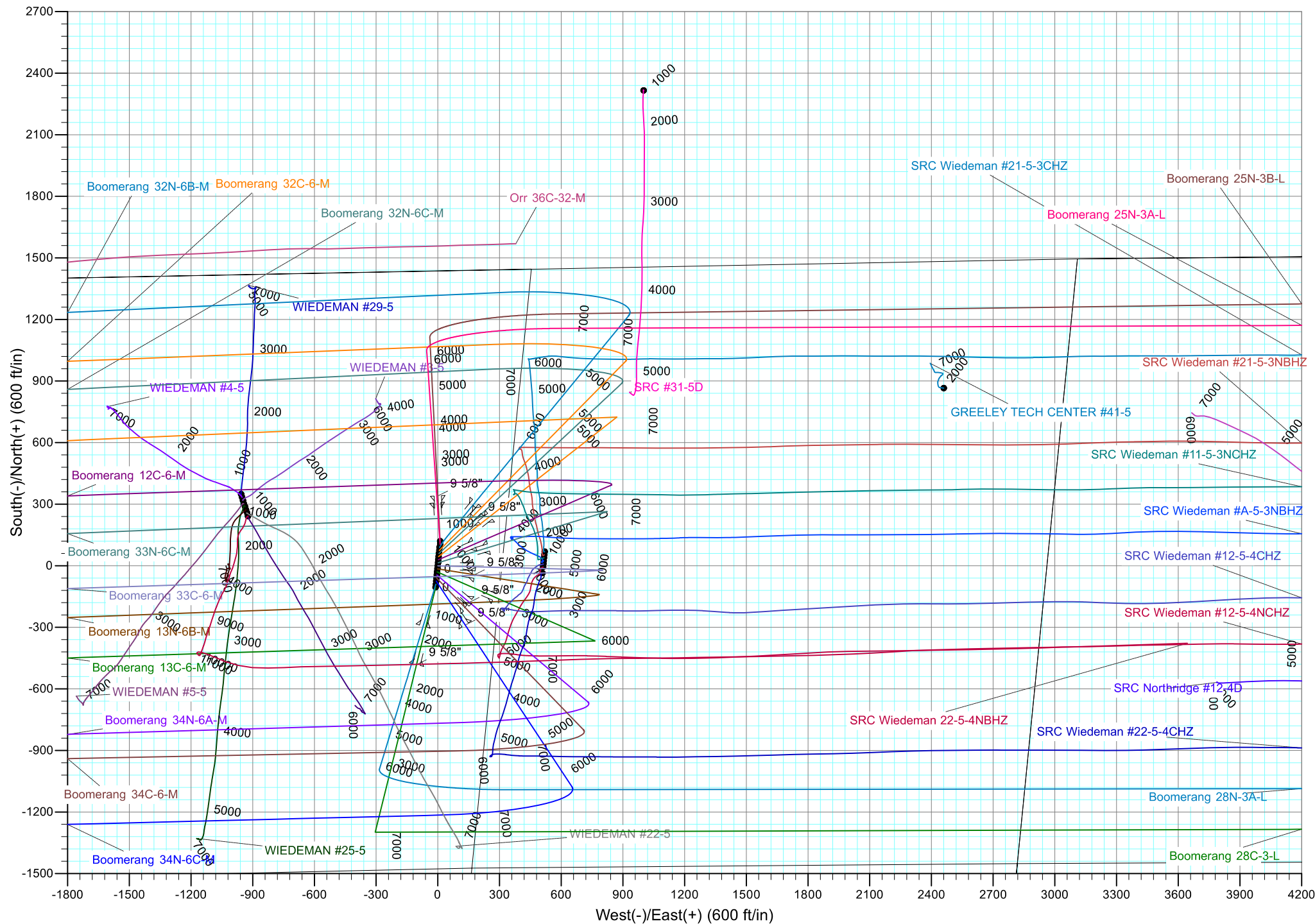
CASING DETAILS			
TVD	MD	Name	Size
1750.00	1760.73	9 5/8"	9.625

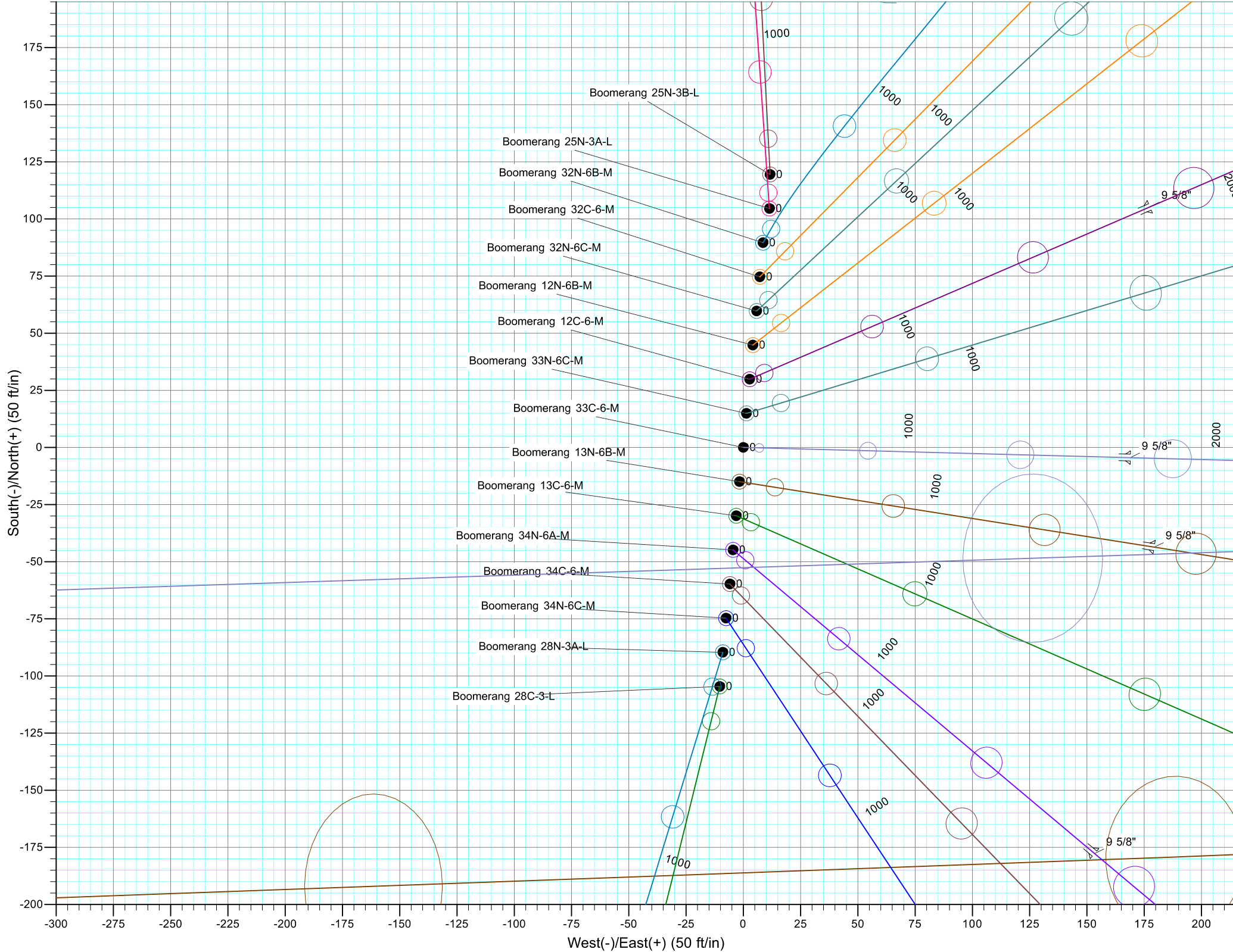


Azimuths to True North
Magnetic North: 8.26°

Magnetic Field
Strength: 52429.9snT
Dip Angle: 66.88°
Date: 4/1/2017
Model: IGRF2015









Synergy Resources Corporation

SEC 5-T5N-R66W

Boomerang 21-5

Boomerang 33C-6-M

OH

Plan: Plan #1

Standard Planning Report

05 April, 2017

Database:	EDM 5000.14 Single User Db	Local Co-ordinate Reference:	Well Boomerang 33C-6-M
Company:	Synergy Resources Corporation	TVD Reference:	GL 4770+KB 20 @ 4790.00ft
Project:	SEC 5-T5N-R66W	MD Reference:	GL 4770+KB 20 @ 4790.00ft
Site:	Boomerang 21-5	North Reference:	True
Well:	Boomerang 33C-6-M	Survey Calculation Method:	Minimum Curvature
Wellbore:	OH		
Design:	Plan #1		

Project	SEC 5-T5N-R66W		
Map System:	US State Plane 1983	System Datum:	Mean Sea Level
Geo Datum:	North American Datum 1983		
Map Zone:	Colorado Northern Zone		

Site	Boomerang 21-5				
Site Position:		Northing:	1,401,541.68 ft	Latitude:	40.4335360
From:	Lat/Long	Easting:	3,193,882.83 ft	Longitude:	-104.8035290
Position Uncertainty:	3.28 ft	Slot Radius:	13.200 in	Grid Convergence:	0.45 °

Well	Boomerang 33C-6-M, 1436 FNL 2327 FWL					
Well Position	+N/-S	-119.50 ft	Northing:	1,401,422.09 ft	Latitude:	40.4332080
	+E/-W	-11.69 ft	Easting:	3,193,872.07 ft	Longitude:	-104.8035710
Position Uncertainty		3.28 ft	Wellhead Elevation:		Ground Level:	4,770.00 ft

Wellbore	OH				
Magnetics	Model Name	Sample Date	Declination (°)	Dip Angle (°)	Field Strength (nT)
	IGRF2015	4/1/2017	8.26	66.88	52,430

Design	Plan #1			
Audit Notes:				
Version:	Phase:	PLAN	Tie On Depth:	0.00
Vertical Section:	Depth From (TVD) (ft)	+N/-S (ft)	+E/-W (ft)	Direction (°)
	0.00	0.00	0.00	268.13

Plan Survey Tool Program	Date	4/5/2017		
Depth From (ft)	Depth To (ft)	Survey (Wellbore)	Tool Name	Remarks
1	0.00	15,648.41 Plan #1 (OH)	MWD+IFR1	
			OWSG MWD + IFR1	

Plan Sections										
Measured Depth (ft)	Inclination (°)	Azimuth (°)	Vertical Depth (ft)	+N/-S (ft)	+E/-W (ft)	Dogleg Rate (°/100ft)	Build Rate (°/100ft)	Turn Rate (°/100ft)	TFO (°)	Target
0.00	0.00	0.00	0.00	0.00	0.00	0.00	0.00	0.00	0.00	
300.00	0.00	0.00	300.00	0.00	0.00	0.00	0.00	0.00	0.00	
682.50	7.65	91.50	681.36	-0.67	25.49	2.00	2.00	0.00	91.50	
6,475.54	7.65	91.50	6,422.84	-20.85	796.40	0.00	0.00	0.00	0.00	
7,567.79	90.67	268.13	7,144.00	-47.40	158.55	9.00	7.60	16.17	176.60	
15,648.52	90.67	268.13	7,050.00	-310.56	-7,917.35	0.00	0.00	0.00	0.00	PBHL_Boomerang 33

Database:	EDM 5000.14 Single User Db	Local Co-ordinate Reference:	Well Boomerang 33C-6-M
Company:	Synergy Resources Corporation	TVD Reference:	GL 4770+KB 20 @ 4790.00ft
Project:	SEC 5-T5N-R66W	MD Reference:	GL 4770+KB 20 @ 4790.00ft
Site:	Boomerang 21-5	North Reference:	True
Well:	Boomerang 33C-6-M	Survey Calculation Method:	Minimum Curvature
Wellbore:	OH		
Design:	Plan #1		

Planned Survey									
Measured Depth (ft)	Inclination (°)	Azimuth (°)	Vertical Depth (ft)	+N/-S (ft)	+E/-W (ft)	Vertical Section (ft)	Dogleg Rate (°/100ft)	Build Rate (°/100ft)	Turn Rate (°/100ft)
0.00	0.00	0.00	0.00	0.00	0.00	0.00	0.00	0.00	0.00
100.00	0.00	0.00	100.00	0.00	0.00	0.00	0.00	0.00	0.00
200.00	0.00	0.00	200.00	0.00	0.00	0.00	0.00	0.00	0.00
300.00	0.00	0.00	300.00	0.00	0.00	0.00	0.00	0.00	0.00
Start Build 2.00									
400.00	2.00	91.50	399.98	-0.05	1.74	-1.74	2.00	2.00	0.00
500.00	4.00	91.50	499.84	-0.18	6.98	-6.97	2.00	2.00	0.00
600.00	6.00	91.50	599.45	-0.41	15.69	-15.67	2.00	2.00	0.00
682.50	7.65	91.50	681.36	-0.67	25.49	-25.45	2.00	2.00	0.00
Start 5793.03 hold at 682.50 MD									
700.00	7.65	91.50	698.71	-0.73	27.82	-27.78	0.00	0.00	0.00
800.00	7.65	91.50	797.82	-1.08	41.13	-41.07	0.00	0.00	0.00
900.00	7.65	91.50	896.93	-1.43	54.43	-54.36	0.00	0.00	0.00
1,000.00	7.65	91.50	996.04	-1.77	67.74	-67.65	0.00	0.00	0.00
1,100.00	7.65	91.50	1,095.15	-2.12	81.05	-80.94	0.00	0.00	0.00
1,200.00	7.65	91.50	1,194.26	-2.47	94.36	-94.22	0.00	0.00	0.00
1,300.00	7.65	91.50	1,293.37	-2.82	107.66	-107.51	0.00	0.00	0.00
1,400.00	7.65	91.50	1,392.48	-3.17	120.97	-120.80	0.00	0.00	0.00
1,500.00	7.65	91.50	1,491.59	-3.52	134.28	-134.09	0.00	0.00	0.00
1,600.00	7.65	91.50	1,590.70	-3.86	147.59	-147.38	0.00	0.00	0.00
1,700.00	7.65	91.50	1,689.81	-4.21	160.89	-160.67	0.00	0.00	0.00
1,760.73	7.65	91.50	1,750.00	-4.42	168.98	-168.74	0.00	0.00	0.00
9 5/8"									
1,800.00	7.65	91.50	1,788.92	-4.56	174.20	-173.96	0.00	0.00	0.00
1,900.00	7.65	91.50	1,888.03	-4.91	187.51	-187.25	0.00	0.00	0.00
2,000.00	7.65	91.50	1,987.14	-5.26	200.82	-200.54	0.00	0.00	0.00
2,100.00	7.65	91.50	2,086.25	-5.61	214.12	-213.83	0.00	0.00	0.00
2,200.00	7.65	91.50	2,185.36	-5.96	227.43	-227.12	0.00	0.00	0.00
2,300.00	7.65	91.50	2,284.47	-6.30	240.74	-240.40	0.00	0.00	0.00
2,400.00	7.65	91.50	2,383.58	-6.65	254.05	-253.69	0.00	0.00	0.00
2,500.00	7.65	91.50	2,482.69	-7.00	267.35	-266.98	0.00	0.00	0.00
2,600.00	7.65	91.50	2,581.80	-7.35	280.66	-280.27	0.00	0.00	0.00
2,700.00	7.65	91.50	2,680.91	-7.70	293.97	-293.56	0.00	0.00	0.00
2,800.00	7.65	91.50	2,780.02	-8.05	307.28	-306.85	0.00	0.00	0.00
2,900.00	7.65	91.50	2,879.13	-8.39	320.58	-320.14	0.00	0.00	0.00
3,000.00	7.65	91.50	2,978.24	-8.74	333.89	-333.43	0.00	0.00	0.00
3,100.00	7.65	91.50	3,077.35	-9.09	347.20	-346.72	0.00	0.00	0.00
3,200.00	7.65	91.50	3,176.46	-9.44	360.51	-360.01	0.00	0.00	0.00
3,300.00	7.65	91.50	3,275.57	-9.79	373.81	-373.30	0.00	0.00	0.00
3,400.00	7.65	91.50	3,374.68	-10.14	387.12	-386.58	0.00	0.00	0.00
3,500.00	7.65	91.50	3,473.79	-10.49	400.43	-399.87	0.00	0.00	0.00
3,600.00	7.65	91.50	3,572.90	-10.83	413.74	-413.16	0.00	0.00	0.00
3,700.00	7.65	91.50	3,672.01	-11.18	427.04	-426.45	0.00	0.00	0.00
3,800.00	7.65	91.50	3,771.12	-11.53	440.35	-439.74	0.00	0.00	0.00
3,900.00	7.65	91.50	3,870.23	-11.88	453.66	-453.03	0.00	0.00	0.00
4,000.00	7.65	91.50	3,969.34	-12.23	466.97	-466.32	0.00	0.00	0.00
4,100.00	7.65	91.50	4,068.45	-12.58	480.27	-479.61	0.00	0.00	0.00
4,200.00	7.65	91.50	4,167.56	-12.92	493.58	-492.90	0.00	0.00	0.00
4,300.00	7.65	91.50	4,266.67	-13.27	506.89	-506.19	0.00	0.00	0.00
4,400.00	7.65	91.50	4,365.78	-13.62	520.20	-519.48	0.00	0.00	0.00
4,500.00	7.65	91.50	4,464.89	-13.97	533.51	-532.77	0.00	0.00	0.00
4,600.00	7.65	91.50	4,564.00	-14.32	546.81	-546.05	0.00	0.00	0.00
4,700.00	7.65	91.50	4,663.11	-14.67	560.12	-559.34	0.00	0.00	0.00

Database:	EDM 5000.14 Single User Db	Local Co-ordinate Reference:	Well Boomerang 33C-6-M
Company:	Synergy Resources Corporation	TVD Reference:	GL 4770+KB 20 @ 4790.00ft
Project:	SEC 5-T5N-R66W	MD Reference:	GL 4770+KB 20 @ 4790.00ft
Site:	Boomerang 21-5	North Reference:	True
Well:	Boomerang 33C-6-M	Survey Calculation Method:	Minimum Curvature
Wellbore:	OH		
Design:	Plan #1		

Planned Survey									
Measured Depth (ft)	Inclination (°)	Azimuth (°)	Vertical Depth (ft)	+N/-S (ft)	+E/-W (ft)	Vertical Section (ft)	Dogleg Rate (°/100ft)	Build Rate (°/100ft)	Turn Rate (°/100ft)
4,800.00	7.65	91.50	4,762.22	-15.02	573.43	-572.63	0.00	0.00	0.00
4,900.00	7.65	91.50	4,861.33	-15.36	586.74	-585.92	0.00	0.00	0.00
5,000.00	7.65	91.50	4,960.44	-15.71	600.04	-599.21	0.00	0.00	0.00
5,100.00	7.65	91.50	5,059.55	-16.06	613.35	-612.50	0.00	0.00	0.00
5,200.00	7.65	91.50	5,158.66	-16.41	626.66	-625.79	0.00	0.00	0.00
5,300.00	7.65	91.50	5,257.77	-16.76	639.97	-639.08	0.00	0.00	0.00
5,400.00	7.65	91.50	5,356.88	-17.11	653.27	-652.37	0.00	0.00	0.00
5,500.00	7.65	91.50	5,455.99	-17.46	666.58	-665.66	0.00	0.00	0.00
5,600.00	7.65	91.50	5,555.10	-17.80	679.89	-678.95	0.00	0.00	0.00
5,700.00	7.65	91.50	5,654.21	-18.15	693.20	-692.23	0.00	0.00	0.00
5,800.00	7.65	91.50	5,753.32	-18.50	706.50	-705.52	0.00	0.00	0.00
5,900.00	7.65	91.50	5,852.43	-18.85	719.81	-718.81	0.00	0.00	0.00
6,000.00	7.65	91.50	5,951.54	-19.20	733.12	-732.10	0.00	0.00	0.00
6,100.00	7.65	91.50	6,050.65	-19.55	746.43	-745.39	0.00	0.00	0.00
6,200.00	7.65	91.50	6,149.76	-19.89	759.73	-758.68	0.00	0.00	0.00
6,300.00	7.65	91.50	6,248.87	-20.24	773.04	-771.97	0.00	0.00	0.00
6,400.00	7.65	91.50	6,347.98	-20.59	786.35	-785.26	0.00	0.00	0.00
6,475.54	7.65	91.50	6,422.84	-20.85	796.40	-795.30	0.00	0.00	0.00
Start DLS 9.00 TFO 176.60									
6,500.00	5.45	92.87	6,447.14	-20.96	799.19	-798.08	9.00	-8.98	5.62
6,600.00	3.59	260.90	6,547.02	-21.69	800.84	-799.71	9.00	-1.86	168.03
6,700.00	12.57	266.10	6,645.93	-22.93	786.86	-785.70	9.00	8.98	5.20
6,800.00	21.57	266.98	6,741.43	-24.64	757.59	-756.38	9.00	9.00	0.88
6,900.00	30.57	267.36	6,831.16	-26.78	713.74	-712.49	9.00	9.00	0.38
7,000.00	39.57	267.58	6,912.92	-29.30	656.40	-655.09	9.00	9.00	0.22
7,100.00	48.57	267.73	6,984.70	-32.14	586.98	-585.62	9.00	9.00	0.15
7,200.00	57.57	267.84	7,044.73	-35.22	507.19	-505.77	9.00	9.00	0.11
7,300.00	66.57	267.93	7,091.53	-38.47	418.99	-417.51	9.00	9.00	0.09
7,400.00	75.57	268.01	7,123.94	-41.81	324.56	-323.02	9.00	9.00	0.08
7,500.00	84.57	268.09	7,141.18	-45.16	226.21	-224.62	9.00	9.00	0.07
7,567.77	90.66	268.13	7,144.00	-47.40	158.58	-156.94	9.00	9.00	0.07
PLP_Boomerang 33C-6-M(1473 FNL 2487 FWL)									
7,567.79	90.67	268.13	7,144.00	-47.40	158.55	-156.92	9.00	9.00	0.07
LP(1488 FNL 2487 FWL)									
7,600.00	90.67	268.13	7,143.62	-48.45	126.36	-124.71	0.00	0.00	0.00
7,700.00	90.67	268.13	7,142.46	-51.70	26.42	-24.72	0.00	0.00	0.00
7,800.00	90.67	268.13	7,141.29	-54.96	-73.52	75.27	0.00	0.00	0.00
7,900.00	90.67	268.13	7,140.13	-58.22	-173.46	175.27	0.00	0.00	0.00
8,000.00	90.67	268.13	7,138.97	-61.47	-273.40	275.26	0.00	0.00	0.00
8,100.00	90.67	268.13	7,137.80	-64.73	-373.34	375.25	0.00	0.00	0.00
8,200.00	90.67	268.13	7,136.64	-67.99	-473.28	475.25	0.00	0.00	0.00
8,300.00	90.67	268.13	7,135.48	-71.24	-573.22	575.24	0.00	0.00	0.00
8,400.00	90.67	268.13	7,134.32	-74.50	-673.16	675.23	0.00	0.00	0.00
8,500.00	90.67	268.13	7,133.15	-77.76	-773.10	775.23	0.00	0.00	0.00
8,600.00	90.67	268.13	7,131.99	-81.01	-873.04	875.22	0.00	0.00	0.00
8,700.00	90.67	268.13	7,130.83	-84.27	-972.98	975.21	0.00	0.00	0.00
8,800.00	90.67	268.13	7,129.66	-87.53	-1,072.92	1,075.21	0.00	0.00	0.00
8,900.00	90.67	268.13	7,128.50	-90.78	-1,172.86	1,175.20	0.00	0.00	0.00
9,000.00	90.67	268.13	7,127.34	-94.04	-1,272.80	1,275.19	0.00	0.00	0.00
9,100.00	90.67	268.13	7,126.17	-97.30	-1,372.74	1,375.19	0.00	0.00	0.00
9,200.00	90.67	268.13	7,125.01	-100.55	-1,472.68	1,475.18	0.00	0.00	0.00
9,300.00	90.67	268.13	7,123.85	-103.81	-1,572.62	1,575.17	0.00	0.00	0.00
9,400.00	90.67	268.13	7,122.68	-107.07	-1,672.56	1,675.17	0.00	0.00	0.00

Database:	EDM 5000.14 Single User Db	Local Co-ordinate Reference:	Well Boomerang 33C-6-M
Company:	Synergy Resources Corporation	TVD Reference:	GL 4770+KB 20 @ 4790.00ft
Project:	SEC 5-T5N-R66W	MD Reference:	GL 4770+KB 20 @ 4790.00ft
Site:	Boomerang 21-5	North Reference:	True
Well:	Boomerang 33C-6-M	Survey Calculation Method:	Minimum Curvature
Wellbore:	OH		
Design:	Plan #1		

Planned Survey									
Measured Depth (ft)	Inclination (°)	Azimuth (°)	Vertical Depth (ft)	+N/-S (ft)	+E/-W (ft)	Vertical Section (ft)	Dogleg Rate (°/100ft)	Build Rate (°/100ft)	Turn Rate (°/100ft)
9,500.00	90.67	268.13	7,121.52	-110.32	-1,772.50	1,775.16	0.00	0.00	0.00
9,600.00	90.67	268.13	7,120.36	-113.58	-1,872.44	1,875.15	0.00	0.00	0.00
9,700.00	90.67	268.13	7,119.19	-116.84	-1,972.38	1,975.15	0.00	0.00	0.00
9,800.00	90.67	268.13	7,118.03	-120.09	-2,072.32	2,075.14	0.00	0.00	0.00
9,900.00	90.67	268.13	7,116.87	-123.35	-2,172.26	2,175.13	0.00	0.00	0.00
10,000.00	90.67	268.13	7,115.70	-126.61	-2,272.20	2,275.13	0.00	0.00	0.00
10,100.00	90.67	268.13	7,114.54	-129.86	-2,372.14	2,375.12	0.00	0.00	0.00
10,200.00	90.67	268.13	7,113.38	-133.12	-2,472.08	2,475.11	0.00	0.00	0.00
10,300.00	90.67	268.13	7,112.21	-136.38	-2,572.02	2,575.11	0.00	0.00	0.00
10,400.00	90.67	268.13	7,111.05	-139.63	-2,671.96	2,675.10	0.00	0.00	0.00
10,500.00	90.67	268.13	7,109.89	-142.89	-2,771.91	2,775.09	0.00	0.00	0.00
10,600.00	90.67	268.13	7,108.72	-146.15	-2,871.85	2,875.08	0.00	0.00	0.00
10,700.00	90.67	268.13	7,107.56	-149.40	-2,971.79	2,975.08	0.00	0.00	0.00
10,800.00	90.67	268.13	7,106.40	-152.66	-3,071.73	3,075.07	0.00	0.00	0.00
10,900.00	90.67	268.13	7,105.24	-155.92	-3,171.67	3,175.06	0.00	0.00	0.00
11,000.00	90.67	268.13	7,104.07	-159.17	-3,271.61	3,275.06	0.00	0.00	0.00
11,100.00	90.67	268.13	7,102.91	-162.43	-3,371.55	3,375.05	0.00	0.00	0.00
11,200.00	90.67	268.13	7,101.75	-165.69	-3,471.49	3,475.04	0.00	0.00	0.00
11,300.00	90.67	268.13	7,100.58	-168.94	-3,571.43	3,575.04	0.00	0.00	0.00
11,400.00	90.67	268.13	7,099.42	-172.20	-3,671.37	3,675.03	0.00	0.00	0.00
11,500.00	90.67	268.13	7,098.26	-175.46	-3,771.31	3,775.02	0.00	0.00	0.00
11,600.00	90.67	268.13	7,097.09	-178.71	-3,871.25	3,875.02	0.00	0.00	0.00
11,700.00	90.67	268.13	7,095.93	-181.97	-3,971.19	3,975.01	0.00	0.00	0.00
11,800.00	90.67	268.13	7,094.77	-185.23	-4,071.13	4,075.00	0.00	0.00	0.00
11,900.00	90.67	268.13	7,093.60	-188.48	-4,171.07	4,175.00	0.00	0.00	0.00
12,000.00	90.67	268.13	7,092.44	-191.74	-4,271.01	4,274.99	0.00	0.00	0.00
12,100.00	90.67	268.13	7,091.28	-195.00	-4,370.95	4,374.98	0.00	0.00	0.00
12,200.00	90.67	268.13	7,090.11	-198.25	-4,470.89	4,474.98	0.00	0.00	0.00
12,300.00	90.67	268.13	7,088.95	-201.51	-4,570.83	4,574.97	0.00	0.00	0.00
12,400.00	90.67	268.13	7,087.79	-204.77	-4,670.77	4,674.96	0.00	0.00	0.00
12,500.00	90.67	268.13	7,086.62	-208.02	-4,770.71	4,774.96	0.00	0.00	0.00
12,600.00	90.67	268.13	7,085.46	-211.28	-4,870.65	4,874.95	0.00	0.00	0.00
12,700.00	90.67	268.13	7,084.30	-214.54	-4,970.59	4,974.94	0.00	0.00	0.00
12,800.00	90.67	268.13	7,083.13	-217.79	-5,070.53	5,074.94	0.00	0.00	0.00
12,900.00	90.67	268.13	7,081.97	-221.05	-5,170.47	5,174.93	0.00	0.00	0.00
13,000.00	90.67	268.13	7,080.81	-224.31	-5,270.41	5,274.92	0.00	0.00	0.00
13,100.00	90.67	268.13	7,079.64	-227.56	-5,370.35	5,374.92	0.00	0.00	0.00
13,200.00	90.67	268.13	7,078.48	-230.82	-5,470.29	5,474.91	0.00	0.00	0.00
13,300.00	90.67	268.13	7,077.32	-234.08	-5,570.23	5,574.90	0.00	0.00	0.00
13,400.00	90.67	268.13	7,076.16	-237.33	-5,670.17	5,674.90	0.00	0.00	0.00
13,500.00	90.67	268.13	7,074.99	-240.59	-5,770.11	5,774.89	0.00	0.00	0.00
13,600.00	90.67	268.13	7,073.83	-243.85	-5,870.05	5,874.88	0.00	0.00	0.00
13,700.00	90.67	268.13	7,072.67	-247.10	-5,969.99	5,974.88	0.00	0.00	0.00
13,800.00	90.67	268.13	7,071.50	-250.36	-6,069.93	6,074.87	0.00	0.00	0.00
13,900.00	90.67	268.13	7,070.34	-253.62	-6,169.87	6,174.86	0.00	0.00	0.00
14,000.00	90.67	268.13	7,069.18	-256.87	-6,269.81	6,274.85	0.00	0.00	0.00
14,100.00	90.67	268.13	7,068.01	-260.13	-6,369.75	6,374.85	0.00	0.00	0.00
14,200.00	90.67	268.13	7,066.85	-263.39	-6,469.69	6,474.84	0.00	0.00	0.00
14,300.00	90.67	268.13	7,065.69	-266.64	-6,569.63	6,574.83	0.00	0.00	0.00
14,400.00	90.67	268.13	7,064.52	-269.90	-6,669.57	6,674.83	0.00	0.00	0.00
14,500.00	90.67	268.13	7,063.36	-273.16	-6,769.51	6,774.82	0.00	0.00	0.00
14,600.00	90.67	268.13	7,062.20	-276.41	-6,869.45	6,874.81	0.00	0.00	0.00
14,700.00	90.67	268.13	7,061.03	-279.67	-6,969.39	6,974.81	0.00	0.00	0.00
14,800.00	90.67	268.13	7,059.87	-282.93	-7,069.33	7,074.80	0.00	0.00	0.00

Database:	EDM 5000.14 Single User Db	Local Co-ordinate Reference:	Well Boomerang 33C-6-M
Company:	Synergy Resources Corporation	TVD Reference:	GL 4770+KB 20 @ 4790.00ft
Project:	SEC 5-T5N-R66W	MD Reference:	GL 4770+KB 20 @ 4790.00ft
Site:	Boomerang 21-5	North Reference:	True
Well:	Boomerang 33C-6-M	Survey Calculation Method:	Minimum Curvature
Wellbore:	OH		
Design:	Plan #1		

Planned Survey									
Measured Depth (ft)	Inclination (°)	Azimuth (°)	Vertical Depth (ft)	+N/-S (ft)	+E/-W (ft)	Vertical Section (ft)	Dogleg Rate (°/100ft)	Build Rate (°/100ft)	Turn Rate (°/100ft)
14,900.00	90.67	268.13	7,058.71	-286.18	-7,169.27	7,174.79	0.00	0.00	0.00
15,000.00	90.67	268.13	7,057.54	-289.44	-7,269.21	7,274.79	0.00	0.00	0.00
15,100.00	90.67	268.13	7,056.38	-292.70	-7,369.15	7,374.78	0.00	0.00	0.00
15,200.00	90.67	268.13	7,055.22	-295.95	-7,469.09	7,474.77	0.00	0.00	0.00
15,300.00	90.67	268.13	7,054.05	-299.21	-7,569.03	7,574.77	0.00	0.00	0.00
15,400.00	90.67	268.13	7,052.89	-302.47	-7,668.97	7,674.76	0.00	0.00	0.00
15,500.00	90.67	268.13	7,051.73	-305.72	-7,768.91	7,774.75	0.00	0.00	0.00
15,600.00	90.67	268.13	7,050.56	-308.98	-7,868.85	7,874.75	0.00	0.00	0.00
15,648.52	90.67	268.13	7,050.00	-310.56	-7,917.35	7,923.27	0.00	0.00	0.00
TD at 15648.52 - PBHL_Boomerang 33C-6-M(1408 FNL 150 FWL)									

Design Targets									
Target Name	Dip Angle (°)	Dip Dir. (°)	TVD (ft)	+N/-S (ft)	+E/-W (ft)	Northing (ft)	Easting (ft)	Latitude	Longitude
- hit/miss target									
- Shape									
PBHL_Boomerang 33C- - plan hits target center - Point	0.00	0.00	7,050.00	-310.56	-7,917.35	1,401,049.36	3,185,957.41	40.4323520	-104.8320120
PLP_Boomerang 33C-6- - plan misses target center by 13.90ft at 7567.77ft MD (7144.00 TVD, -47.40 N, 158.57 E) - Point	0.00	0.00	7,144.00	-33.50	158.12	1,401,389.83	3,194,030.45	40.4331160	-104.8030030

Casing Points					
Measured Depth (ft)	Vertical Depth (ft)	Name		Casing Diameter (in)	Hole Diameter (in)
1,760.73	1,750.00	9 5/8"		9.625	13.500

Plan Annotations				
Measured Depth (ft)	Vertical Depth (ft)	Local Coordinates		Comment
		+N/-S (ft)	+E/-W (ft)	
300.00	300.00	0.00	0.00	Start Build 2.00
682.50	681.36	-0.67	25.49	Start 5793.03 hold at 682.50 MD
6,475.54	6,422.84	-20.85	796.40	Start DLS 9.00 TFO 176.60
7,567.79	7,144.00	-47.40	158.55	LP(1488 FNL 2487 FWL)
15,648.52	7,050.00	-310.56	-7,917.35	TD at 15648.52