



**Project:** SEC 5-T5N-R66W  
**Site:** Boomerang 21-5  
**Well:** Boomerang 34N-6C-M  
**Wellbore:** OH  
**Design:** Plan #1

SECTION DETAILS									
MD	Inc	Azi	TVD	+N/-S	+E/-W	Dleg	TFace	VSect	Target
0.00	0.00	0.00	0.00	0.00	0.00	0.00	0.00	0.00	
200.00	0.00	0.00	200.00	0.00	0.00	0.00	0.00	0.00	
773.50	11.47	146.63	769.68	-47.78	31.47	2.00	146.63	-30.27	
6520.79	11.47	146.63	6402.19	-1002.24	660.10	0.00	0.00	-634.88	
7601.12	91.21	268.57	7095.00	-1140.25	17.04	9.00	121.22	11.43	
15521.99	91.21	268.57	6928.00	-1337.89	-7899.61	0.00	0.00	7930.53	PBHL

**PROJECT DETAILS: SEC 5-T5N-R66W**  
Geodetic System: US State Plane 1983  
Datum: North American Datum 1983  
Ellipsoid: GRS 1980  
Zone: Colorado Northern Zone  
Colorado Northern Zone  
System Datum: Mean Sea Level

DESIGN TARGET DETAILS									
Name	TVD	+N/-S	+E/-W	Northing	Easting	Latitude	Longitude	Shape	
PBHL	6928.00	-1337.89	-7899.61	1399947.46	3185976.29	40.4293270	-104.8319740	Point	
- plan hits target center									
PLP	7095.00	-1186.87	17.82	1400160.65	3193892.28	40.4297450	-104.8035340	Point	
- plan misses target center by 46.63ft at 7601.50ft MD (7095.00 TVD, -1140.26 N, 16.65 E)									

CASING DETAILS			
TVD	MD	Name	Size
1750.00	1773.80	9 5/8"	9.625

T

M

Azimuths to True North

Magnetic North: 8.26°

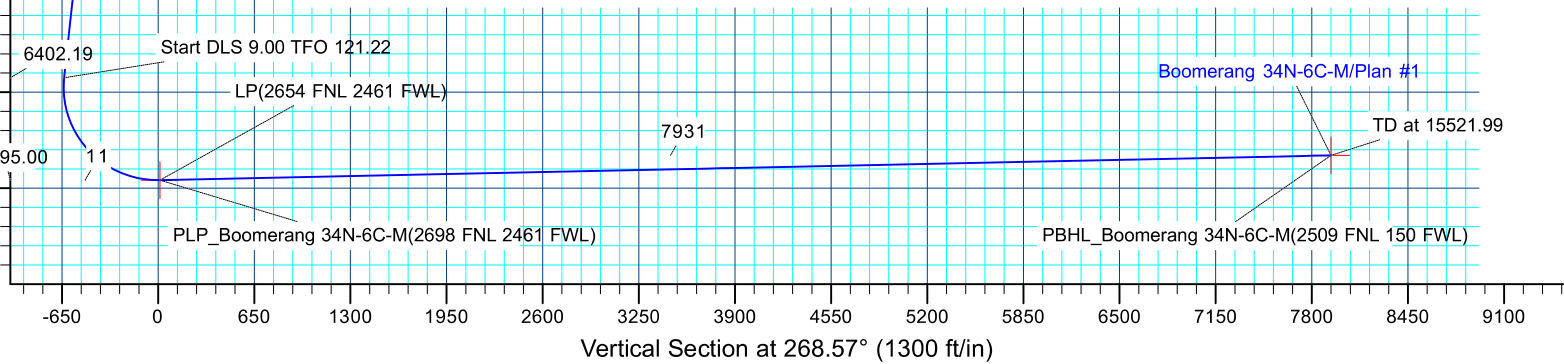
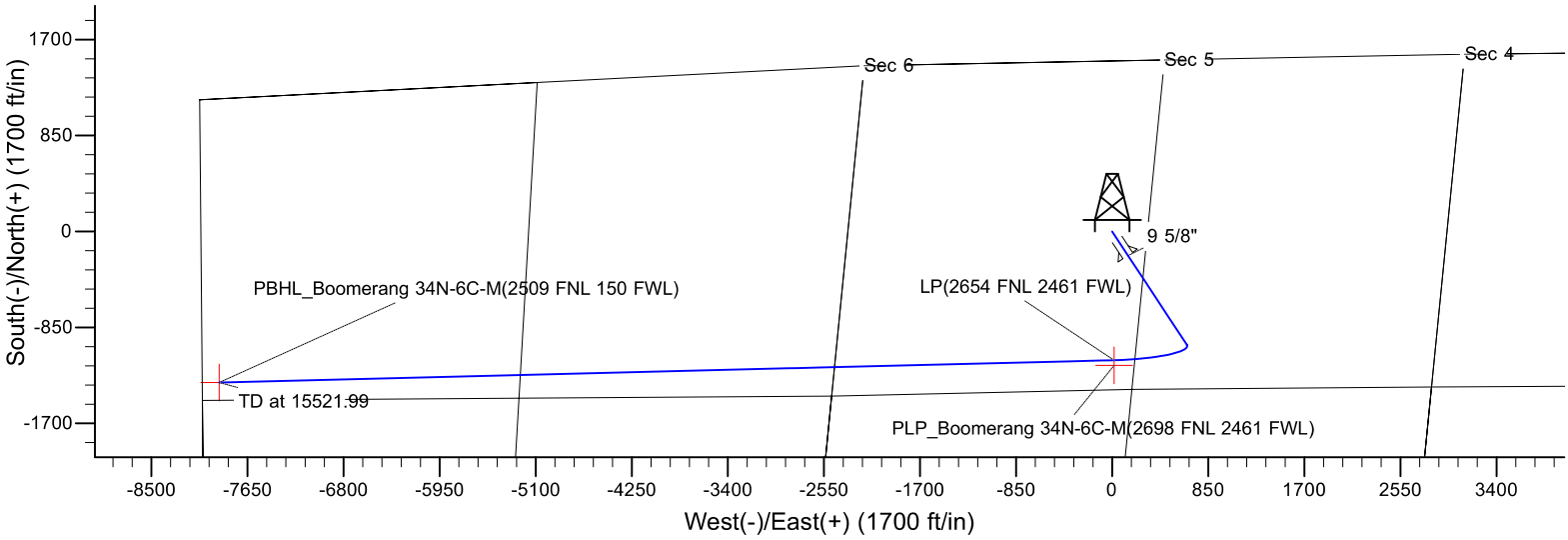
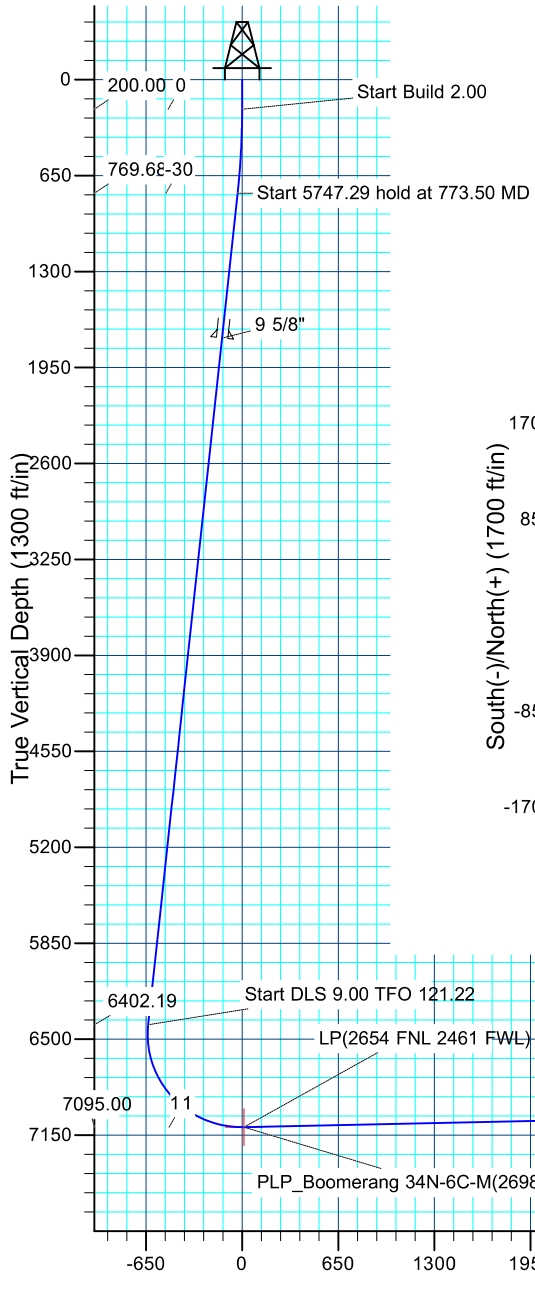
Magnetic Field

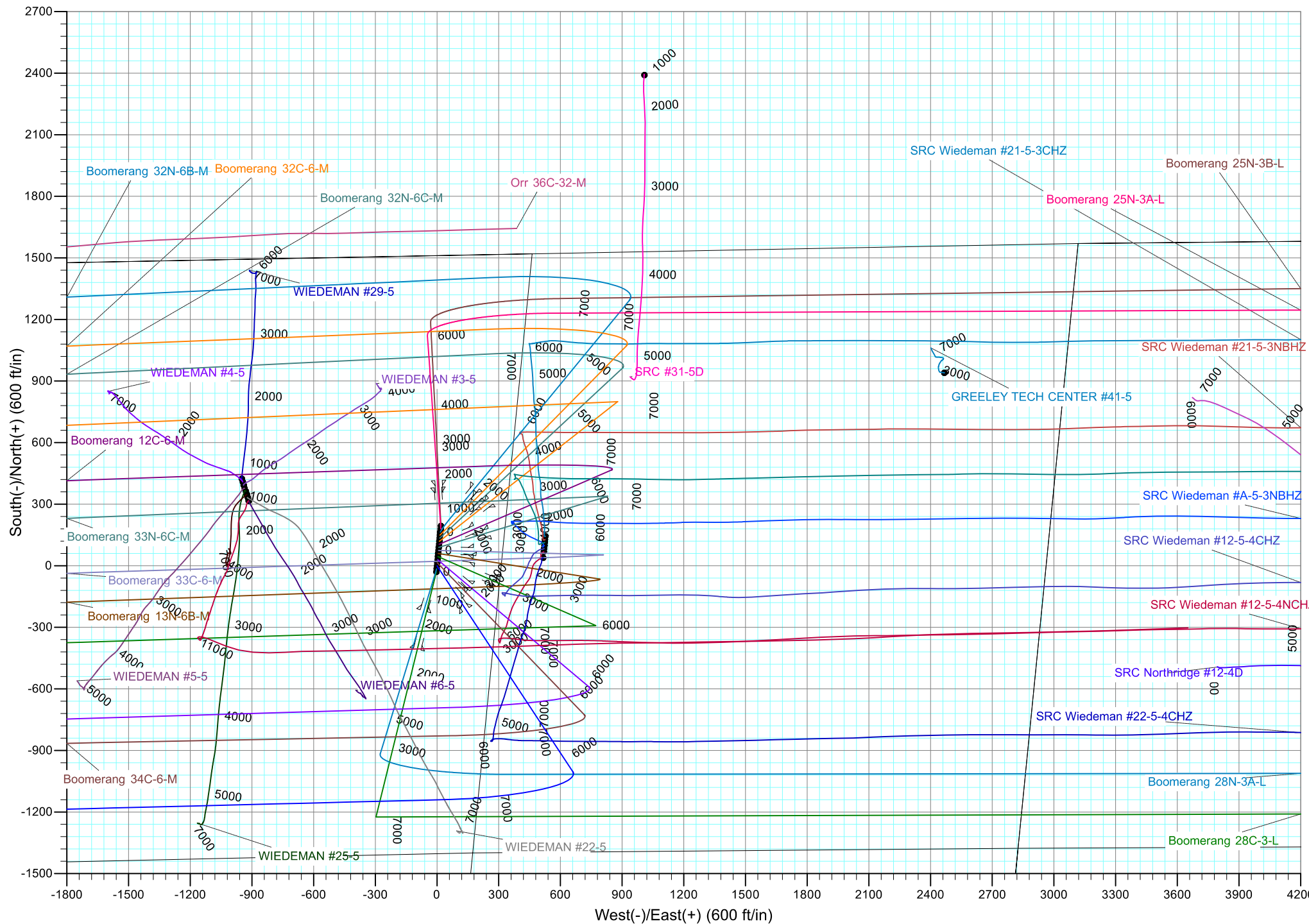
Strength: 52429.8snT

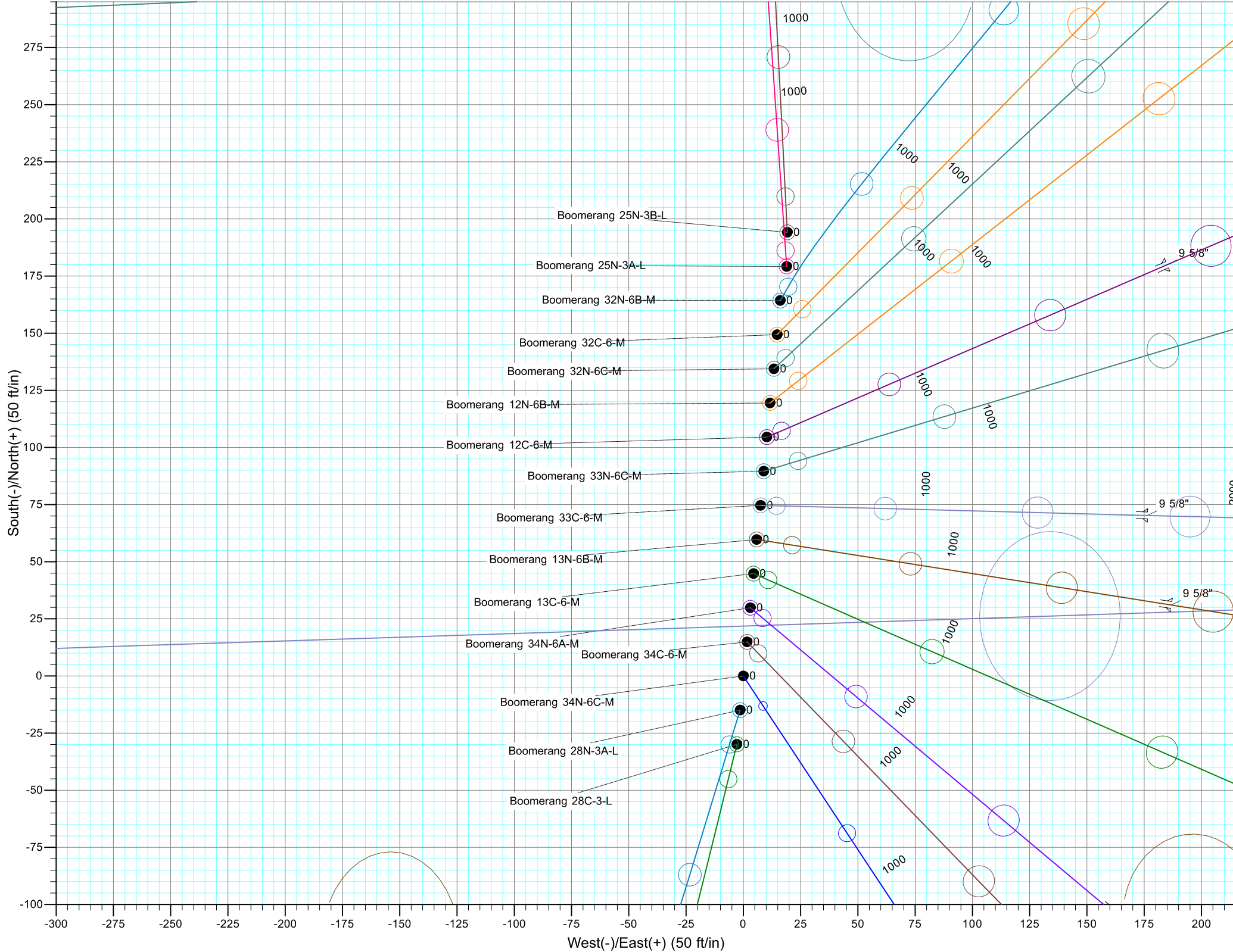
Dip Angle: 66.88°

Date: 4/1/2017

Model: IGRF2015









# **Synergy Resources Corporation**

**SEC 5-T5N-R66W**

**Boomerang 21-5**

**Boomerang 34N-6C-M**

**OH**

**Plan: Plan #1**

## **Standard Planning Report**

**05 April, 2017**

<b>Database:</b>	EDM 5000.14 Single User Db	<b>Local Co-ordinate Reference:</b>	Well Boomerang 34N-6C-M
<b>Company:</b>	Synergy Resources Corporation	<b>TVD Reference:</b>	GL 4770+KB 20 @ 4790.00ft
<b>Project:</b>	SEC 5-T5N-R66W	<b>MD Reference:</b>	GL 4770+KB 20 @ 4790.00ft
<b>Site:</b>	Boomerang 21-5	<b>North Reference:</b>	True
<b>Well:</b>	Boomerang 34N-6C-M	<b>Survey Calculation Method:</b>	Minimum Curvature
<b>Wellbore:</b>	OH		
<b>Design:</b>	Plan #1		

<b>Project</b>	SEC 5-T5N-R66W		
<b>Map System:</b>	US State Plane 1983	<b>System Datum:</b>	Mean Sea Level
<b>Geo Datum:</b>	North American Datum 1983		
<b>Map Zone:</b>	Colorado Northern Zone		

Site		Boomerang 21-5			
Site Position: From:	Lat/Long	Northing:	1,401,541.68 ft	Latitude:	40.4335360
		Easting:	3,193,882.83 ft	Longitude:	-104.8035290
		Position Uncertainty:	3.28 ft	Slot Radius:	13.200 in

Well	Boomerang 34N-6C-M, 1511 FNL 2327 FWL					
Well Position	+N/-S	-194.19 ft	Northing:	1,401,347.35 ft	Latitude:	40.4330030
	+E/-W	-19.21 ft	Easting:	3,193,865.14 ft	Longitude:	-104.8035980
Position Uncertainty		3.28 ft	Wellhead Elevation:		Ground Level:	4,770.00 ft

<b>Wellbore</b>	OH				
<b>Magnetics</b>	<b>Model Name</b>	<b>Sample Date</b>	<b>Declination (°)</b>	<b>Dip Angle (°)</b>	<b>Field Strength (nT)</b>
	IGRF2015	4/1/2017	8.26	66.88	52,430

<b>Design</b>	Plan #1			
<b>Audit Notes:</b>				
<b>Version:</b>	<b>Phase:</b>	PLAN	<b>Tie On Depth:</b>	0.00
<b>Vertical Section:</b>	<b>Depth From (TVD) (ft)</b>	<b>+N/-S (ft)</b>	<b>+E/-W (ft)</b>	<b>Direction (°)</b>
	0.00	0.00	0.00	268.57

<b>Plan Survey Tool Program</b>	<b>Date</b>	4/5/2017		
<b>Depth From (ft)</b>	<b>Depth To (ft)</b>	<b>Survey (Wellbore)</b>	<b>Tool Name</b>	<b>Remarks</b>
1	0.00	15,521.99 Plan #1 (OH)	MWD+IFR1	
			OWSG MWD + IFR1	

<b>Plan Sections</b>										
<b>Measured Depth (ft)</b>	<b>Inclination (°)</b>	<b>Azimuth (°)</b>	<b>Vertical Depth (ft)</b>	<b>+N/-S (ft)</b>	<b>+E/-W (ft)</b>	<b>Dogleg Rate (°/100ft)</b>	<b>Build Rate (°/100ft)</b>	<b>Turn Rate (°/100ft)</b>	<b>TFO (°)</b>	<b>Target</b>
0.00	0.00	0.00	0.00	0.00	0.00	0.00	0.00	0.00	0.00	
200.00	0.00	0.00	200.00	0.00	0.00	0.00	0.00	0.00	0.00	
773.50	11.47	146.63	769.68	-47.78	31.47	2.00	2.00	0.00	146.63	
6,520.79	11.47	146.63	6,402.19	-1,002.24	660.10	0.00	0.00	0.00	0.00	
7,601.12	91.21	268.57	7,095.00	-1,140.25	17.04	9.00	7.38	11.29	121.22	
15,521.99	91.21	268.57	6,928.00	-1,337.89	-7,899.61	0.00	0.00	0.00	0.00	PBHL_Boomerang 34

<b>Database:</b>	EDM 5000.14 Single User Db	<b>Local Co-ordinate Reference:</b>	Well Boomerang 34N-6C-M
<b>Company:</b>	Synergy Resources Corporation	<b>TVD Reference:</b>	GL 4770+KB 20 @ 4790.00ft
<b>Project:</b>	SEC 5-T5N-R66W	<b>MD Reference:</b>	GL 4770+KB 20 @ 4790.00ft
<b>Site:</b>	Boomerang 21-5	<b>North Reference:</b>	True
<b>Well:</b>	Boomerang 34N-6C-M	<b>Survey Calculation Method:</b>	Minimum Curvature
<b>Wellbore:</b>	OH		
<b>Design:</b>	Plan #1		

Planned Survey									
Measured Depth (ft)	Inclination (°)	Azimuth (°)	Vertical Depth (ft)	+N/-S (ft)	+E/-W (ft)	Vertical Section (ft)	Dogleg Rate (°/100ft)	Build Rate (°/100ft)	Turn Rate (°/100ft)
0.00	0.00	0.00	0.00	0.00	0.00	0.00	0.00	0.00	0.00
100.00	0.00	0.00	100.00	0.00	0.00	0.00	0.00	0.00	0.00
200.00	0.00	0.00	200.00	0.00	0.00	0.00	0.00	0.00	0.00
<b>Start Build 2.00</b>									
300.00	2.00	146.63	299.98	-1.46	0.96	-0.92	2.00	2.00	0.00
400.00	4.00	146.63	399.84	-5.83	3.84	-3.69	2.00	2.00	0.00
500.00	6.00	146.63	499.45	-13.11	8.63	-8.30	2.00	2.00	0.00
600.00	8.00	146.63	598.70	-23.28	15.34	-14.75	2.00	2.00	0.00
700.00	10.00	146.63	697.47	-36.35	23.94	-23.02	2.00	2.00	0.00
773.50	11.47	146.63	769.68	-47.78	31.47	-30.27	2.00	2.00	0.00
<b>Start 5747.29 hold at 773.50 MD</b>									
800.00	11.47	146.63	795.65	-52.18	34.37	-33.06	0.00	0.00	0.00
900.00	11.47	146.63	893.65	-68.79	45.31	-43.58	0.00	0.00	0.00
1,000.00	11.47	146.63	991.65	-85.40	56.24	-54.10	0.00	0.00	0.00
1,100.00	11.47	146.63	1,089.66	-102.00	67.18	-64.62	0.00	0.00	0.00
1,200.00	11.47	146.63	1,187.66	-118.61	78.12	-75.14	0.00	0.00	0.00
1,300.00	11.47	146.63	1,285.66	-135.22	89.06	-85.66	0.00	0.00	0.00
1,400.00	11.47	146.63	1,383.67	-151.82	100.00	-96.18	0.00	0.00	0.00
1,500.00	11.47	146.63	1,481.67	-168.43	110.93	-106.70	0.00	0.00	0.00
1,600.00	11.47	146.63	1,579.67	-185.04	121.87	-117.22	0.00	0.00	0.00
1,700.00	11.47	146.63	1,677.67	-201.65	132.81	-127.74	0.00	0.00	0.00
1,773.80	11.47	146.63	1,750.00	-213.90	140.88	-135.50	0.00	0.00	0.00
<b>9 5/8"</b>									
1,800.00	11.47	146.63	1,775.68	-218.25	143.75	-138.26	0.00	0.00	0.00
1,900.00	11.47	146.63	1,873.68	-234.86	154.68	-148.78	0.00	0.00	0.00
2,000.00	11.47	146.63	1,971.68	-251.47	165.62	-159.30	0.00	0.00	0.00
2,100.00	11.47	146.63	2,069.69	-268.07	176.56	-169.82	0.00	0.00	0.00
2,200.00	11.47	146.63	2,167.69	-284.68	187.50	-180.34	0.00	0.00	0.00
2,300.00	11.47	146.63	2,265.69	-301.29	198.44	-190.86	0.00	0.00	0.00
2,400.00	11.47	146.63	2,363.69	-317.89	209.37	-201.38	0.00	0.00	0.00
2,500.00	11.47	146.63	2,461.70	-334.50	220.31	-211.90	0.00	0.00	0.00
2,600.00	11.47	146.63	2,559.70	-351.11	231.25	-222.42	0.00	0.00	0.00
2,700.00	11.47	146.63	2,657.70	-367.72	242.19	-232.94	0.00	0.00	0.00
2,800.00	11.47	146.63	2,755.71	-384.32	253.13	-243.46	0.00	0.00	0.00
2,900.00	11.47	146.63	2,853.71	-400.93	264.06	-253.98	0.00	0.00	0.00
3,000.00	11.47	146.63	2,951.71	-417.54	275.00	-264.50	0.00	0.00	0.00
3,100.00	11.47	146.63	3,049.71	-434.14	285.94	-275.02	0.00	0.00	0.00
3,200.00	11.47	146.63	3,147.72	-450.75	296.88	-285.54	0.00	0.00	0.00
3,300.00	11.47	146.63	3,245.72	-467.36	307.82	-296.06	0.00	0.00	0.00
3,400.00	11.47	146.63	3,343.72	-483.97	318.75	-306.58	0.00	0.00	0.00
3,500.00	11.47	146.63	3,441.73	-500.57	329.69	-317.10	0.00	0.00	0.00
3,600.00	11.47	146.63	3,539.73	-517.18	340.63	-327.62	0.00	0.00	0.00
3,700.00	11.47	146.63	3,637.73	-533.79	351.57	-338.14	0.00	0.00	0.00
3,800.00	11.47	146.63	3,735.73	-550.39	362.50	-348.66	0.00	0.00	0.00
3,900.00	11.47	146.63	3,833.74	-567.00	373.44	-359.18	0.00	0.00	0.00
4,000.00	11.47	146.63	3,931.74	-583.61	384.38	-369.70	0.00	0.00	0.00
4,100.00	11.47	146.63	4,029.74	-600.22	395.32	-380.22	0.00	0.00	0.00
4,200.00	11.47	146.63	4,127.75	-616.82	406.26	-390.74	0.00	0.00	0.00
4,300.00	11.47	146.63	4,225.75	-633.43	417.19	-401.26	0.00	0.00	0.00
4,400.00	11.47	146.63	4,323.75	-650.04	428.13	-411.78	0.00	0.00	0.00
4,500.00	11.47	146.63	4,421.76	-666.64	439.07	-422.30	0.00	0.00	0.00
4,600.00	11.47	146.63	4,519.76	-683.25	450.01	-432.82	0.00	0.00	0.00
4,700.00	11.47	146.63	4,617.76	-699.86	460.95	-443.34	0.00	0.00	0.00

<b>Database:</b>	EDM 5000.14 Single User Db	<b>Local Co-ordinate Reference:</b>	Well Boomerang 34N-6C-M
<b>Company:</b>	Synergy Resources Corporation	<b>TVD Reference:</b>	GL 4770+KB 20 @ 4790.00ft
<b>Project:</b>	SEC 5-T5N-R66W	<b>MD Reference:</b>	GL 4770+KB 20 @ 4790.00ft
<b>Site:</b>	Boomerang 21-5	<b>North Reference:</b>	True
<b>Well:</b>	Boomerang 34N-6C-M	<b>Survey Calculation Method:</b>	Minimum Curvature
<b>Wellbore:</b>	OH		
<b>Design:</b>	Plan #1		

Planned Survey									
Measured Depth (ft)	Inclination (°)	Azimuth (°)	Vertical Depth (ft)	+N/-S (ft)	+E/-W (ft)	Vertical Section (ft)	Dogleg Rate (°/100ft)	Build Rate (°/100ft)	Turn Rate (°/100ft)
4,800.00	11.47	146.63	4,715.76	-716.46	471.88	-453.86	0.00	0.00	0.00
4,900.00	11.47	146.63	4,813.77	-733.07	482.82	-464.38	0.00	0.00	0.00
5,000.00	11.47	146.63	4,911.77	-749.68	493.76	-474.90	0.00	0.00	0.00
5,100.00	11.47	146.63	5,009.77	-766.29	504.70	-485.42	0.00	0.00	0.00
5,200.00	11.47	146.63	5,107.78	-782.89	515.63	-495.94	0.00	0.00	0.00
5,300.00	11.47	146.63	5,205.78	-799.50	526.57	-506.46	0.00	0.00	0.00
5,400.00	11.47	146.63	5,303.78	-816.11	537.51	-516.98	0.00	0.00	0.00
5,500.00	11.47	146.63	5,401.78	-832.71	548.45	-527.50	0.00	0.00	0.00
5,600.00	11.47	146.63	5,499.79	-849.32	559.39	-538.02	0.00	0.00	0.00
5,700.00	11.47	146.63	5,597.79	-865.93	570.32	-548.54	0.00	0.00	0.00
5,800.00	11.47	146.63	5,695.79	-882.54	581.26	-559.06	0.00	0.00	0.00
5,900.00	11.47	146.63	5,793.80	-899.14	592.20	-569.58	0.00	0.00	0.00
6,000.00	11.47	146.63	5,891.80	-915.75	603.14	-580.10	0.00	0.00	0.00
6,100.00	11.47	146.63	5,989.80	-932.36	614.08	-590.62	0.00	0.00	0.00
6,200.00	11.47	146.63	6,087.80	-948.96	625.01	-601.14	0.00	0.00	0.00
6,300.00	11.47	146.63	6,185.81	-965.57	635.95	-611.66	0.00	0.00	0.00
6,400.00	11.47	146.63	6,283.81	-982.18	646.89	-622.18	0.00	0.00	0.00
6,500.00	11.47	146.63	6,381.81	-998.79	657.83	-632.70	0.00	0.00	0.00
6,520.79	11.47	146.63	6,402.19	-1,002.24	660.10	-634.88	0.00	0.00	0.00
<b>Start DLS 9.00 TFO 121.22</b>									
6,600.00	9.86	184.95	6,480.12	-1,015.59	663.85	-638.30	9.00	-2.04	48.38
6,700.00	14.05	224.76	6,578.09	-1,032.77	654.55	-628.57	9.00	4.19	39.81
6,800.00	21.40	242.24	6,673.34	-1,049.92	629.80	-603.41	9.00	7.35	17.48
6,900.00	29.65	250.71	6,763.53	-1,066.62	590.23	-563.43	9.00	8.25	8.47
7,000.00	38.21	255.70	6,846.44	-1,082.46	536.80	-509.62	9.00	8.57	4.99
7,100.00	46.92	259.08	6,920.03	-1,097.06	470.84	-443.31	9.00	8.71	3.38
7,200.00	55.71	261.60	6,982.48	-1,110.04	393.95	-366.13	9.00	8.78	2.53
7,300.00	64.53	263.65	7,032.26	-1,121.09	308.05	-279.98	9.00	8.82	2.04
7,400.00	73.38	265.41	7,068.14	-1,129.94	215.24	-186.97	9.00	8.85	1.76
7,500.00	82.24	267.01	7,089.23	-1,136.37	117.81	-89.41	9.00	8.86	1.61
7,600.00	91.11	268.55	7,095.03	-1,140.22	18.15	10.31	9.00	8.87	1.54
7,601.12	91.21	268.57	7,095.00	-1,140.25	17.04	11.43	9.00	8.87	1.53
<b>LP(2654 FNL 2461 FWL)</b>									
7,601.50	91.21	268.57	7,095.00	-1,140.26	16.65	11.81	0.00	0.00	0.00
<b>PLP_Boomerang 34N-6C-M(2698 FNL 2461 FWL)</b>									
7,700.00	91.21	268.57	7,092.92	-1,142.71	-81.79	110.29	0.00	0.00	0.00
7,800.00	91.21	268.57	7,090.81	-1,145.21	-181.74	210.26	0.00	0.00	0.00
7,900.00	91.21	268.57	7,088.70	-1,147.70	-281.69	310.24	0.00	0.00	0.00
8,000.00	91.21	268.57	7,086.59	-1,150.20	-381.63	410.22	0.00	0.00	0.00
8,100.00	91.21	268.57	7,084.49	-1,152.70	-481.58	510.20	0.00	0.00	0.00
8,200.00	91.21	268.57	7,082.38	-1,155.19	-581.53	610.17	0.00	0.00	0.00
8,300.00	91.21	268.57	7,080.27	-1,157.69	-681.47	710.15	0.00	0.00	0.00
8,400.00	91.21	268.57	7,078.16	-1,160.18	-781.42	810.13	0.00	0.00	0.00
8,500.00	91.21	268.57	7,076.05	-1,162.68	-881.37	910.11	0.00	0.00	0.00
8,600.00	91.21	268.57	7,073.94	-1,165.17	-981.31	1,010.09	0.00	0.00	0.00
8,700.00	91.21	268.57	7,071.84	-1,167.67	-1,081.26	1,110.06	0.00	0.00	0.00
8,800.00	91.21	268.57	7,069.73	-1,170.16	-1,181.21	1,210.04	0.00	0.00	0.00
8,900.00	91.21	268.57	7,067.62	-1,172.66	-1,281.15	1,310.02	0.00	0.00	0.00
9,000.00	91.21	268.57	7,065.51	-1,175.15	-1,381.10	1,410.00	0.00	0.00	0.00
9,100.00	91.21	268.57	7,063.40	-1,177.65	-1,481.05	1,509.97	0.00	0.00	0.00
9,200.00	91.21	268.57	7,061.29	-1,180.14	-1,580.99	1,609.95	0.00	0.00	0.00
9,300.00	91.21	268.57	7,059.18	-1,182.64	-1,680.94	1,709.93	0.00	0.00	0.00
9,400.00	91.21	268.57	7,057.08	-1,185.13	-1,780.89	1,809.91	0.00	0.00	0.00

<b>Database:</b>	EDM 5000.14 Single User Db	<b>Local Co-ordinate Reference:</b>	Well Boomerang 34N-6C-M
<b>Company:</b>	Synergy Resources Corporation	<b>TVD Reference:</b>	GL 4770+KB 20 @ 4790.00ft
<b>Project:</b>	SEC 5-T5N-R66W	<b>MD Reference:</b>	GL 4770+KB 20 @ 4790.00ft
<b>Site:</b>	Boomerang 21-5	<b>North Reference:</b>	True
<b>Well:</b>	Boomerang 34N-6C-M	<b>Survey Calculation Method:</b>	Minimum Curvature
<b>Wellbore:</b>	OH		
<b>Design:</b>	Plan #1		

Planned Survey										
Measured Depth (ft)	Inclination (°)	Azimuth (°)	Vertical Depth (ft)	+N/-S (ft)	+E/-W (ft)	Vertical Section (ft)	Dogleg Rate (°/100ft)	Build Rate (°/100ft)	Turn Rate (°/100ft)	
9,500.00	91.21	268.57	7,054.97	-1,187.63	-1,880.83	1,909.89	0.00	0.00	0.00	
9,600.00	91.21	268.57	7,052.86	-1,190.12	-1,980.78	2,009.86	0.00	0.00	0.00	
9,700.00	91.21	268.57	7,050.75	-1,192.62	-2,080.73	2,109.84	0.00	0.00	0.00	
9,800.00	91.21	268.57	7,048.64	-1,195.11	-2,180.67	2,209.82	0.00	0.00	0.00	
9,900.00	91.21	268.57	7,046.53	-1,197.61	-2,280.62	2,309.80	0.00	0.00	0.00	
10,000.00	91.21	268.57	7,044.43	-1,200.10	-2,380.57	2,409.77	0.00	0.00	0.00	
10,100.00	91.21	268.57	7,042.32	-1,202.60	-2,480.51	2,509.75	0.00	0.00	0.00	
10,200.00	91.21	268.57	7,040.21	-1,205.09	-2,580.46	2,609.73	0.00	0.00	0.00	
10,300.00	91.21	268.57	7,038.10	-1,207.59	-2,680.41	2,709.71	0.00	0.00	0.00	
10,400.00	91.21	268.57	7,035.99	-1,210.08	-2,780.35	2,809.69	0.00	0.00	0.00	
10,500.00	91.21	268.57	7,033.88	-1,212.58	-2,880.30	2,909.66	0.00	0.00	0.00	
10,600.00	91.21	268.57	7,031.78	-1,215.07	-2,980.25	3,009.64	0.00	0.00	0.00	
10,700.00	91.21	268.57	7,029.67	-1,217.57	-3,080.19	3,109.62	0.00	0.00	0.00	
10,800.00	91.21	268.57	7,027.56	-1,220.07	-3,180.14	3,209.60	0.00	0.00	0.00	
10,900.00	91.21	268.57	7,025.45	-1,222.56	-3,280.09	3,309.57	0.00	0.00	0.00	
11,000.00	91.21	268.57	7,023.34	-1,225.06	-3,380.03	3,409.55	0.00	0.00	0.00	
11,100.00	91.21	268.57	7,021.23	-1,227.55	-3,479.98	3,509.53	0.00	0.00	0.00	
11,200.00	91.21	268.57	7,019.13	-1,230.05	-3,579.93	3,609.51	0.00	0.00	0.00	
11,300.00	91.21	268.57	7,017.02	-1,232.54	-3,679.87	3,709.49	0.00	0.00	0.00	
11,400.00	91.21	268.57	7,014.91	-1,235.04	-3,779.82	3,809.46	0.00	0.00	0.00	
11,500.00	91.21	268.57	7,012.80	-1,237.53	-3,879.77	3,909.44	0.00	0.00	0.00	
11,600.00	91.21	268.57	7,010.69	-1,240.03	-3,979.71	4,009.42	0.00	0.00	0.00	
11,700.00	91.21	268.57	7,008.58	-1,242.52	-4,079.66	4,109.40	0.00	0.00	0.00	
11,800.00	91.21	268.57	7,006.47	-1,245.02	-4,179.61	4,209.37	0.00	0.00	0.00	
11,900.00	91.21	268.57	7,004.37	-1,247.51	-4,279.55	4,309.35	0.00	0.00	0.00	
12,000.00	91.21	268.57	7,002.26	-1,250.01	-4,379.50	4,409.33	0.00	0.00	0.00	
12,100.00	91.21	268.57	7,000.15	-1,252.50	-4,479.45	4,509.31	0.00	0.00	0.00	
12,200.00	91.21	268.57	6,998.04	-1,255.00	-4,579.39	4,609.29	0.00	0.00	0.00	
12,300.00	91.21	268.57	6,995.93	-1,257.49	-4,679.34	4,709.26	0.00	0.00	0.00	
12,400.00	91.21	268.57	6,993.82	-1,259.99	-4,779.29	4,809.24	0.00	0.00	0.00	
12,500.00	91.21	268.57	6,991.72	-1,262.48	-4,879.23	4,909.22	0.00	0.00	0.00	
12,600.00	91.21	268.57	6,989.61	-1,264.98	-4,979.18	5,009.20	0.00	0.00	0.00	
12,700.00	91.21	268.57	6,987.50	-1,267.47	-5,079.13	5,109.17	0.00	0.00	0.00	
12,800.00	91.21	268.57	6,985.39	-1,269.97	-5,179.07	5,209.15	0.00	0.00	0.00	
12,900.00	91.21	268.57	6,983.28	-1,272.46	-5,279.02	5,309.13	0.00	0.00	0.00	
13,000.00	91.21	268.57	6,981.17	-1,274.96	-5,378.97	5,409.11	0.00	0.00	0.00	
13,100.00	91.21	268.57	6,979.07	-1,277.45	-5,478.91	5,509.09	0.00	0.00	0.00	
13,200.00	91.21	268.57	6,976.96	-1,279.95	-5,578.86	5,609.06	0.00	0.00	0.00	
13,300.00	91.21	268.57	6,974.85	-1,282.44	-5,678.81	5,709.04	0.00	0.00	0.00	
13,400.00	91.21	268.57	6,972.74	-1,284.94	-5,778.75	5,809.02	0.00	0.00	0.00	
13,500.00	91.21	268.57	6,970.63	-1,287.43	-5,878.70	5,909.00	0.00	0.00	0.00	
13,600.00	91.21	268.57	6,968.52	-1,289.93	-5,978.65	6,008.97	0.00	0.00	0.00	
13,700.00	91.21	268.57	6,966.41	-1,292.43	-6,078.59	6,108.95	0.00	0.00	0.00	
13,800.00	91.21	268.57	6,964.31	-1,294.92	-6,178.54	6,208.93	0.00	0.00	0.00	
13,900.00	91.21	268.57	6,962.20	-1,297.42	-6,278.49	6,308.91	0.00	0.00	0.00	
14,000.00	91.21	268.57	6,960.09	-1,299.91	-6,378.43	6,408.89	0.00	0.00	0.00	
14,100.00	91.21	268.57	6,957.98	-1,302.41	-6,478.38	6,508.86	0.00	0.00	0.00	
14,200.00	91.21	268.57	6,955.87	-1,304.90	-6,578.33	6,608.84	0.00	0.00	0.00	
14,300.00	91.21	268.57	6,953.76	-1,307.40	-6,678.27	6,708.82	0.00	0.00	0.00	
14,400.00	91.21	268.57	6,951.66	-1,309.89	-6,778.22	6,808.80	0.00	0.00	0.00	
14,500.00	91.21	268.57	6,949.55	-1,312.39	-6,878.17	6,908.77	0.00	0.00	0.00	
14,600.00	91.21	268.57	6,947.44	-1,314.88	-6,978.11	7,008.75	0.00	0.00	0.00	
14,700.00	91.21	268.57	6,945.33	-1,317.38	-7,078.06	7,108.73	0.00	0.00	0.00	
14,800.00	91.21	268.57	6,943.22	-1,319.87	-7,178.01	7,208.71	0.00	0.00	0.00	



<b>Database:</b>	EDM 5000.14 Single User Db	<b>Local Co-ordinate Reference:</b>	Well Boomerang 34N-6C-M
<b>Company:</b>	Synergy Resources Corporation	<b>TVD Reference:</b>	GL 4770+KB 20 @ 4790.00ft
<b>Project:</b>	SEC 5-T5N-R66W	<b>MD Reference:</b>	GL 4770+KB 20 @ 4790.00ft
<b>Site:</b>	Boomerang 21-5	<b>North Reference:</b>	True
<b>Well:</b>	Boomerang 34N-6C-M	<b>Survey Calculation Method:</b>	Minimum Curvature
<b>Wellbore:</b>	OH		
<b>Design:</b>	Plan #1		

Planned Survey									
Measured Depth (ft)	Inclination (°)	Azimuth (°)	Vertical Depth (ft)	+N/-S (ft)	+E/-W (ft)	Vertical Section (ft)	Dogleg Rate (°/100ft)	Build Rate (°/100ft)	Turn Rate (°/100ft)
14,900.00	91.21	268.57	6,941.11	-1,322.37	-7,277.95	7,308.69	0.00	0.00	0.00
15,000.00	91.21	268.57	6,939.01	-1,324.86	-7,377.90	7,408.66	0.00	0.00	0.00
15,100.00	91.21	268.57	6,936.90	-1,327.36	-7,477.85	7,508.64	0.00	0.00	0.00
15,200.00	91.21	268.57	6,934.79	-1,329.85	-7,577.79	7,608.62	0.00	0.00	0.00
15,300.00	91.21	268.57	6,932.68	-1,332.35	-7,677.74	7,708.60	0.00	0.00	0.00
15,400.00	91.21	268.57	6,930.57	-1,334.84	-7,777.69	7,808.57	0.00	0.00	0.00
15,500.00	91.21	268.57	6,928.46	-1,337.34	-7,877.63	7,908.55	0.00	0.00	0.00
15,521.99	91.21	268.57	6,928.00	-1,337.89	-7,899.61	7,930.53	0.00	0.00	0.00
TD at 15521.99 - PBHL_Boomerang 34N-6C-M(2509 FNL 150 FWL)									

Design Targets									
Target Name	Dip Angle (°)	Dip Dir. (°)	TVD (ft)	+N/-S (ft)	+E/-W (ft)	Northing (ft)	Easting (ft)	Latitude	Longitude
- hit/miss target									
- Shape									
PBHL_Boomerang 34N- - plan hits target center - Point	0.00	0.00	6,928.00	-1,337.89	-7,899.61	1,399,947.46	3,185,976.29	40.4293270	-104.8319740
PLP_Boomerang 34N-6C- - plan misses target center by 46.63ft at 7601.50ft MD (7095.00 TVD, -1140.26 N, 16.65 E) - Point	0.00	0.00	7,095.00	-1,186.87	17.82	1,400,160.65	3,193,892.28	40.4297450	-104.8035340

Casing Points					
Measured Depth (ft)	Vertical Depth (ft)	Name	Casing Diameter (in)	Hole Diameter (in)	
1,773.80	1,750.00	9 5/8"	9.625	13.500	

Plan Annotations				
Measured Depth (ft)	Vertical Depth (ft)	+N/-S (ft)	+E/-W (ft)	Comment
200.00	200.00	0.00	0.00	Start Build 2.00
773.50	769.68	-47.78	31.47	Start 5747.29 hold at 773.50 MD
6,520.79	6,402.19	-1,002.24	660.10	Start DLS 9.00 TFO 121.22
7,601.12	7,095.00	-1,140.25	17.04	LP(2654 FNL 2461 FWL)
15,521.99	6,928.00	-1,337.89	-7,899.61	TD at 15521.99