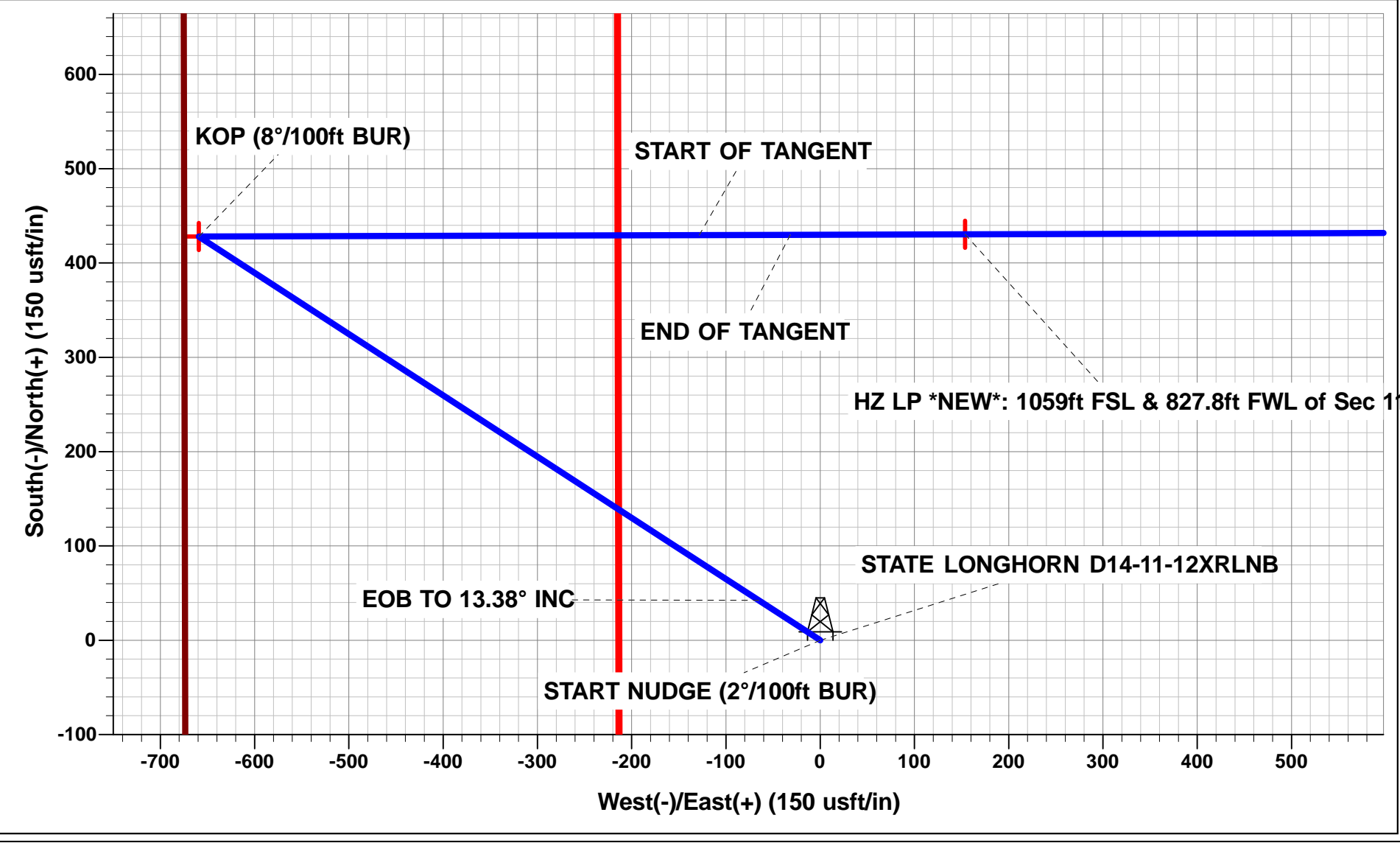




Project: WELD COUNTY, COLORADO (NAD 83)
Site: SW SW SEC. 11 T3N R63W 6th P.M.
Well: STATE LONGHORN D14-11-12XRLNB
Wellbore: ORIGINAL WELLBORE
Design: PROPOSAL #1

ANNOTATIONS									
TVD	MD	Inc	Azi	+N/-S	+E/-W	VSect	Dep	Annotation	
0.0	0.0	0.00	0.00	0.0	0.0	0.0	0.0	SHL: 628.6ft FSL & 674.2ft FWL of Sec 11	
1700.0	1700.0	0.00	0.00	0.0	0.0	0.0	0.0	START NUDGE (2°/100ft BUR)	
2362.7	2368.8	13.38	302.99	42.3	-65.2	-63.1	77.7	EOB TO 13.38° INC	
5014.4	5094.4	13.38	302.99	385.7	-594.0	-574.7	708.3	END OF TANGENT	
5677.1	5763.2	0.00	0.00	428.0	-659.2	-637.8	786.0	EOD TO VERTICAL	
5707.1	5793.2	0.00	0.00	428.0	-659.2	-637.8	786.0	KOP (8°/100ft BUR)	
6398.9	6730.7	75.00	89.83	429.6	-128.3	-107.4	1316.8	START OF TANGENT	
6424.8	6830.7	75.00	89.83	429.9	-31.7	-10.9	1413.4	END OF TANGENT	
6449.2	7018.2	90.00	89.83	430.4	153.6	174.2	1598.8	HZ LP *NEW*: 1059ft FSL & 827.8ft FWL of Sec 11	
6449.2	11537.5	90.00	89.82	444.2	4672.9	4688.9	6118.1	MID-LAT TGT: 1053ft FSL & 0ft FEL of Sec 11	
6449.2	16397.0	90.00	89.78	460.9	9532.3	9543.5	10977.6	BHL: 1049ft FSL & 470ft FEL of Sec 12	

WELLBORE TARGET DETAILS (LAT/LONG)					
Name	TVD	+N/-S	+E/-W	Latitude	Longitude
KOP - STATE LONGHORN D14-11-12XRLNB	5707.1	428.0	-659.2	40.235665	-104.414581
MID-LAT TGT - STATE LONGHORN D14-11-12XRLNB	6449.2	444.2	4672.9	40.235708	-104.395483
BHL - STATE LONGHORN D14-11-12XRLNB	6449.2	460.9	9532.3	40.235750	-104.378078
HZ LP *NEW* - STATE LONGHORN D14-11-12XRLNB	6449.2	430.4	153.6	40.235671	-104.411670



PROPOSED LOCAL COORDINATES:

SHL: 628.6ft FSL & 674.2ft FWL of Sec 11

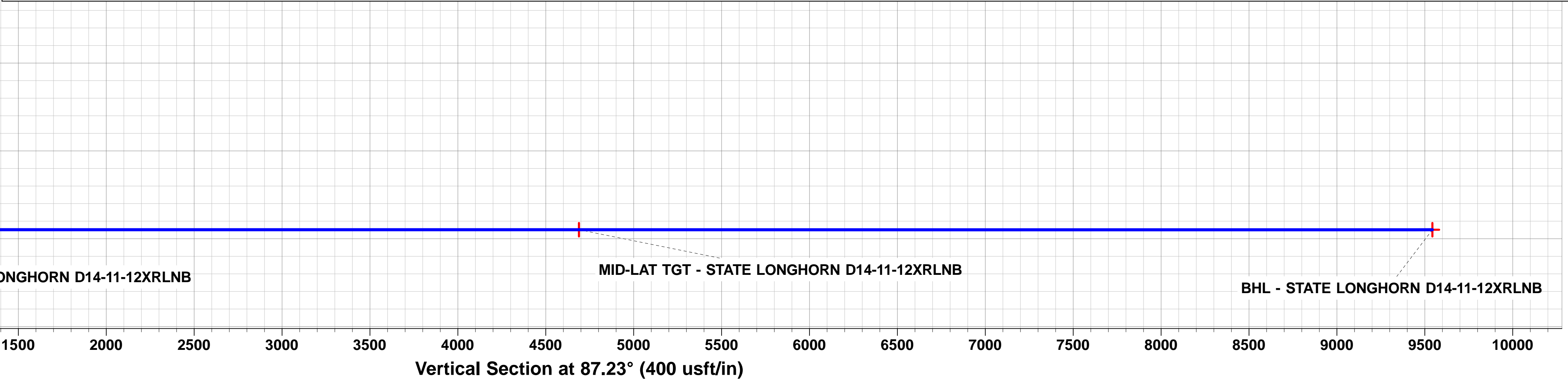
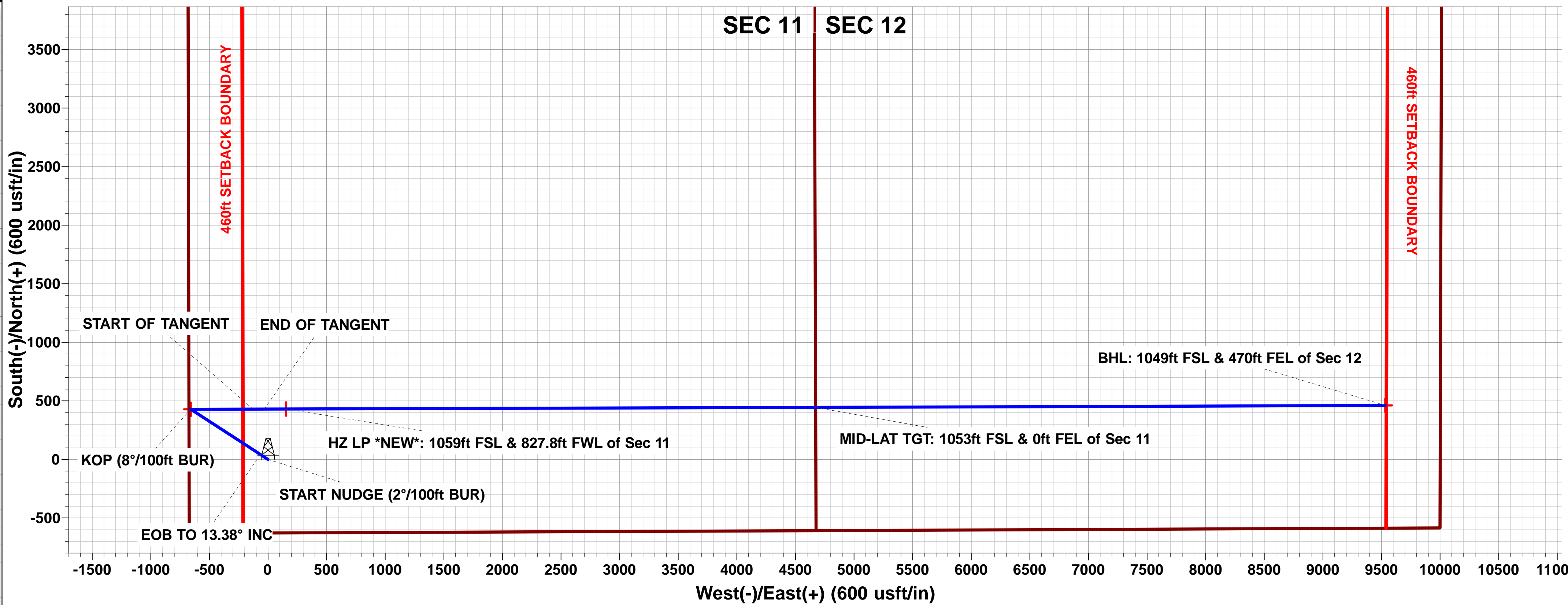
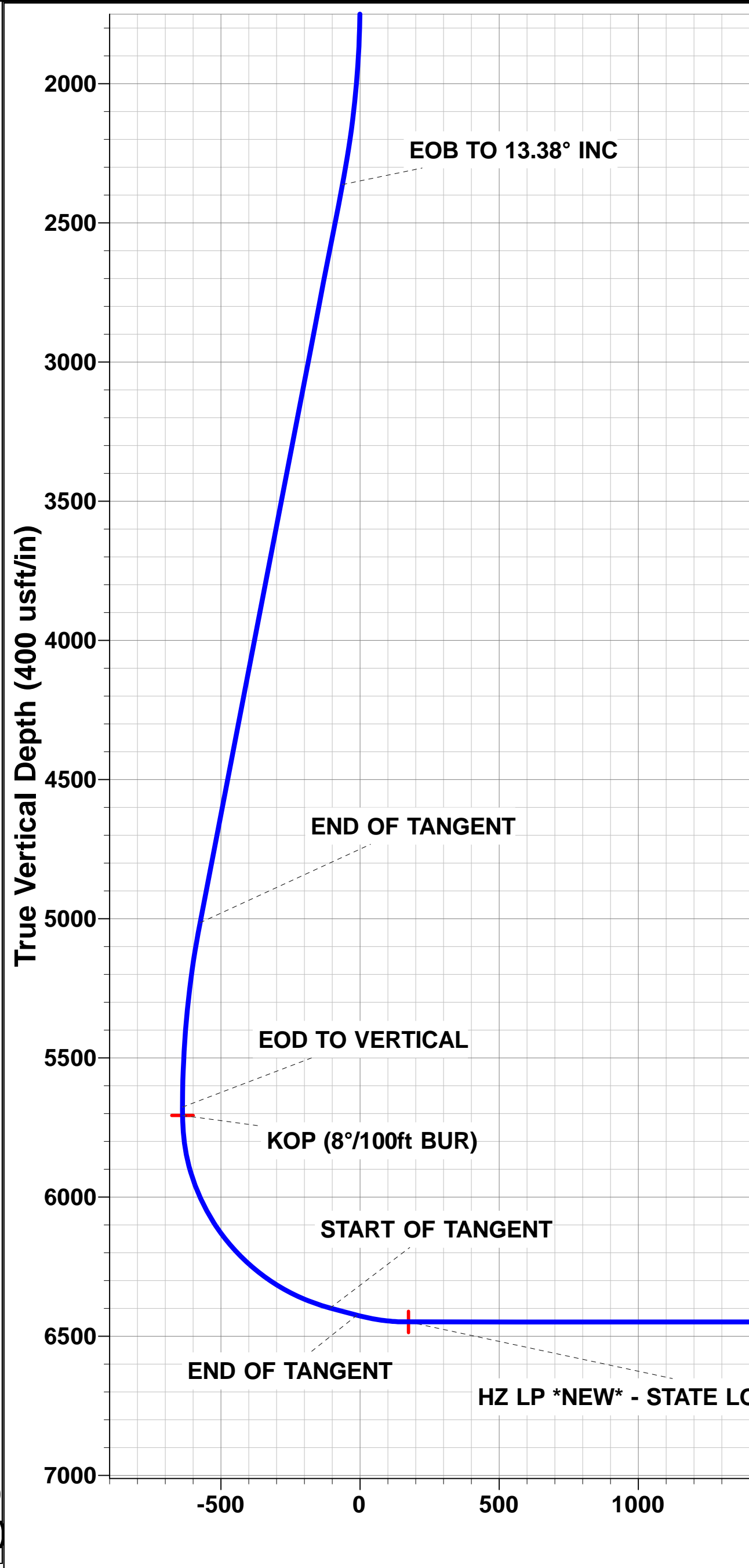
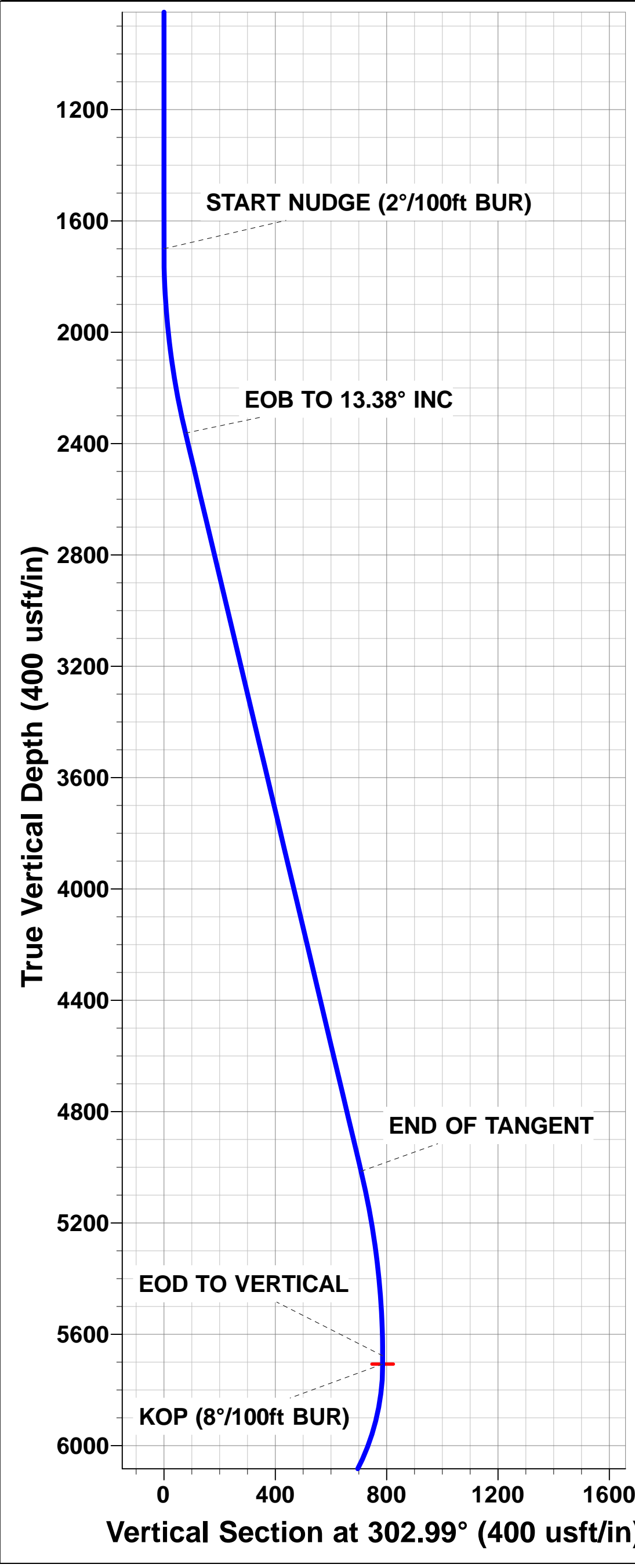
HZ LP *NEW*: 1059ft FSL & 827.7ft FWL of Sec 11

MID-LAT TGT: 1053ft FSL & 0ft FEL of Sec 11

BHL: 1049ft FSL & 470ft FEL of Sec 12

Azimuths to True North
Magnetic North: 8.01°

Magnetic Field
Strength: 52344.9snT
Dip Angle: 66.78°
Date: 12/06/2017
Model: IGRF2015



BONANZA CREEK ENERGY INC.

WELD COUNTY, COLORADO (NAD 83)

SW SW SEC. 11 T3N R63W 6th P.M.

STATE LONGHORN D14-11-12XRLNB

ORIGINAL WELLBORE

12 June, 2017

Plan: PROPOSAL #1



Database:	EDM 5000.1 Single User Db	Local Co-ordinate Reference:	Well STATE LONGHORN D14-11-12XRLNB
Company:	BONANZA CREEK ENERGY INC.	TVD Reference:	KB-EST @ 4799.2usft (Original Well Elev)
Project:	WELD COUNTY, COLORADO (NAD 83)	MD Reference:	KB-EST @ 4799.2usft (Original Well Elev)
Site:	SW SW SEC. 11 T3N R63W 6th P.M.	North Reference:	True
Well:	STATE LONGHORN D14-11-12XRLNB	Survey Calculation Method:	Minimum Curvature
Wellbore:	ORIGINAL WELLBORE		
Design:	PROPOSAL #1		

Project	WELD COUNTY, COLORADO (NAD 83)		
Map System:	US State Plane 1983	System Datum:	Mean Sea Level
Geo Datum:	North American Datum 1983		
Map Zone:	Colorado Northern Zone		Using geodetic scale factor

Site	SW SW SEC. 11 T3N R63W 6th P.M.		
Site Position:		Northing:	1,330,129.34 usft
From:	Lat/Long	Easting:	3,303,690.01 usft
Position Uncertainty:	0.0 usft	Slot Radius:	1.10000ft
		Latitude:	40.234490
		Longitude:	-104.412220
		Grid Convergence:	0.70 °

Well	STATE LONGHORN D14-11-12XRLNB		
Well Position	+N-S	0.0 usft	Northing:
	+E-W	0.0 usft	Easting:
Position Uncertainty	0.0 usft	Wellhead Elevation:	usft
		Latitude:	40.234490
		Longitude:	-104.412220
		Ground Level:	4,782.2 usft

Wellbore	ORIGINAL WELLBORE				
Magnetics	Model Name	Sample Date	Declination (°)	Dip Angle (°)	Field Strength (nT)
	IGRF2015	12/06/2017	8.01	66.78	52,345

Design	PROPOSAL #1			
Audit Notes:				
Version:	Phase:	PROTOTYPE	Tie On Depth:	0.0
Vertical Section:	Depth From (TVD) (usft)	+N-S (usft)	+E-W (usft)	Direction (°)
	6,449.2	0.0	0.0	87.23

Plan Sections											
MD (usft)	Inc (°)	Azi (°)	Vertical Depth	SS (usft)	+N-S (usft)	+E-W (usft)	Dogleg Rate (°/100usf)	Build Rate (°/100usf)	Turn Rate (°/100usf)	TFO (°)	Target
0.0	0.00	0.00	0.0	-4,799.2	0.0	0.0	0.00	0.00	0.00	0.00	
1,700.0	0.00	0.00	1,700.0	-3,099.2	0.0	0.0	0.00	0.00	0.00	0.00	
2,368.8	13.38	302.99	2,362.7	-2,436.5	42.3	-65.2	2.00	2.00	0.00	302.99	
5,094.4	13.38	302.99	5,014.4	215.2	385.7	-594.0	0.00	0.00	0.00	0.00	
5,763.2	0.00	0.00	5,677.1	877.9	428.0	-659.2	2.00	-2.00	0.00	180.00	
5,793.2	0.00	0.00	5,707.1	907.9	428.0	-659.2	0.00	0.00	0.00	0.00	KOP - STATE LON
6,730.7	75.00	89.83	6,398.9	1,599.7	429.6	-128.4	8.00	8.00	0.00	89.83	
6,830.7	75.00	89.83	6,424.8	1,625.6	429.9	-31.8	0.00	0.00	0.00	0.00	
7,018.2	90.00	89.83	6,449.2	1,650.0	430.4	153.6	8.00	8.00	0.00	0.00	
11,537.5	90.00	89.82	6,449.2	1,650.0	444.2	4,672.9	0.00	0.00	0.00	-93.52	MID-LAT TGT - ST/
16,397.0	90.00	89.78	6,449.2	1,650.0	460.9	9,532.3	0.00	0.00	0.00	-88.34	BHL - STATE LON

Database:	EDM 5000.1 Single User Db	Local Co-ordinate Reference:	Well STATE LONGHORN D14-11-12XRLNB
Company:	BONANZA CREEK ENERGY INC.	TVD Reference:	KB-EST @ 4799.2usft (Original Well Elev)
Project:	WELD COUNTY, COLORADO (NAD 83)	MD Reference:	KB-EST @ 4799.2usft (Original Well Elev)
Site:	SW SW SEC. 11 T3N R63W 6th P.M.	North Reference:	True
Well:	STATE LONGHORN D14-11-12XRLNB	Survey Calculation Method:	Minimum Curvature
Wellbore:	ORIGINAL WELLBORE		
Design:	PROPOSAL #1		

Planned Survey

MD (usft)	Inc (°)	Azi (°)	TVD (usft)	SS (usft)	+N/-S (usft)	+E/-W (usft)	Vertical Section (usft)	Dogleg Rate (°/100usft)	Build Rate (°/100usft)	Turn Rate (°/100usft)
SHL: 628.6ft FSL & 674.2ft FWL of Sec 11										
0.0	0.00	0.00	0.0	4,799.20	0.0	0.0	0.0	0.00	0.00	0.00
100.0	0.00	0.00	100.0	4,699.20	0.0	0.0	0.0	0.00	0.00	0.00
200.0	0.00	0.00	200.0	4,599.20	0.0	0.0	0.0	0.00	0.00	0.00
300.0	0.00	0.00	300.0	4,499.20	0.0	0.0	0.0	0.00	0.00	0.00
400.0	0.00	0.00	400.0	4,399.20	0.0	0.0	0.0	0.00	0.00	0.00
500.0	0.00	0.00	500.0	4,299.20	0.0	0.0	0.0	0.00	0.00	0.00
600.0	0.00	0.00	600.0	4,199.20	0.0	0.0	0.0	0.00	0.00	0.00
700.0	0.00	0.00	700.0	4,099.20	0.0	0.0	0.0	0.00	0.00	0.00
800.0	0.00	0.00	800.0	3,999.20	0.0	0.0	0.0	0.00	0.00	0.00
900.0	0.00	0.00	900.0	3,899.20	0.0	0.0	0.0	0.00	0.00	0.00
1,000.0	0.00	0.00	1,000.0	3,799.20	0.0	0.0	0.0	0.00	0.00	0.00
1,100.0	0.00	0.00	1,100.0	3,699.20	0.0	0.0	0.0	0.00	0.00	0.00
1,200.0	0.00	0.00	1,200.0	3,599.20	0.0	0.0	0.0	0.00	0.00	0.00
1,300.0	0.00	0.00	1,300.0	3,499.20	0.0	0.0	0.0	0.00	0.00	0.00
1,400.0	0.00	0.00	1,400.0	3,399.20	0.0	0.0	0.0	0.00	0.00	0.00
1,500.0	0.00	0.00	1,500.0	3,299.20	0.0	0.0	0.0	0.00	0.00	0.00
1,600.0	0.00	0.00	1,600.0	3,199.20	0.0	0.0	0.0	0.00	0.00	0.00
START NUDGE (2°/100ft BUR)										
1,700.0	0.00	0.00	1,700.0	3,099.20	0.0	0.0	0.0	0.00	0.00	0.00
1,800.0	2.00	302.99	1,800.0	2,999.22	1.0	-1.5	-1.4	2.00	2.00	0.00
1,900.0	4.00	302.99	1,899.8	2,899.36	3.8	-5.9	-5.7	2.00	2.00	0.00
2,000.0	6.00	302.99	1,999.5	2,799.75	8.5	-13.2	-12.7	2.00	2.00	0.00
2,100.0	8.00	302.99	2,098.7	2,700.50	15.2	-23.4	-22.6	2.00	2.00	0.00
2,200.0	10.00	302.99	2,197.5	2,601.73	23.7	-36.5	-35.3	2.00	2.00	0.00
2,300.0	12.00	302.99	2,295.6	2,503.58	34.1	-52.5	-50.8	2.00	2.00	0.00
EOB TO 13.38° INC										
2,368.8	13.38	302.99	2,362.7	2,436.46	42.3	-65.2	-63.1	2.00	2.00	0.00
2,400.0	13.38	302.99	2,393.1	2,406.10	46.3	-71.2	-68.9	0.00	0.00	0.00
2,500.0	13.38	302.99	2,490.4	2,308.82	58.8	-90.6	-87.7	0.00	0.00	0.00
2,600.0	13.38	302.99	2,587.7	2,211.53	71.4	-110.0	-106.5	0.00	0.00	0.00
2,700.0	13.38	302.99	2,685.0	2,114.24	84.0	-129.4	-125.2	0.00	0.00	0.00
2,800.0	13.38	302.99	2,782.2	2,016.96	96.6	-148.8	-144.0	0.00	0.00	0.00
2,900.0	13.38	302.99	2,879.5	1,919.67	109.2	-168.2	-162.8	0.00	0.00	0.00
3,000.0	13.38	302.99	2,976.8	1,822.38	121.8	-187.7	-181.5	0.00	0.00	0.00
3,100.0	13.38	302.99	3,074.1	1,725.09	134.4	-207.1	-200.3	0.00	0.00	0.00
3,200.0	13.38	302.99	3,171.4	1,627.81	147.0	-226.5	-219.1	0.00	0.00	0.00
3,300.0	13.38	302.99	3,268.7	1,530.52	159.6	-245.9	-237.9	0.00	0.00	0.00
3,400.0	13.38	302.99	3,366.0	1,433.23	172.2	-265.3	-256.6	0.00	0.00	0.00
3,500.0	13.38	302.99	3,463.3	1,335.94	184.8	-284.7	-275.4	0.00	0.00	0.00
3,600.0	13.38	302.99	3,560.5	1,238.66	197.4	-304.1	-294.2	0.00	0.00	0.00
3,700.0	13.38	302.99	3,657.8	1,141.37	210.0	-323.5	-313.0	0.00	0.00	0.00
3,800.0	13.38	302.99	3,755.1	1,044.08	222.6	-342.9	-331.7	0.00	0.00	0.00
3,900.0	13.38	302.99	3,852.4	946.80	235.2	-362.3	-350.5	0.00	0.00	0.00
4,000.0	13.38	302.99	3,949.7	849.51	247.8	-381.7	-369.3	0.00	0.00	0.00
4,100.0	13.38	302.99	4,047.0	752.22	260.4	-401.1	-388.0	0.00	0.00	0.00
4,200.0	13.38	302.99	4,144.3	654.93	273.0	-420.5	-406.8	0.00	0.00	0.00
4,300.0	13.38	302.99	4,241.6	557.65	285.6	-439.9	-425.6	0.00	0.00	0.00
4,400.0	13.38	302.99	4,338.8	460.36	298.2	-459.3	-444.4	0.00	0.00	0.00
4,500.0	13.38	302.99	4,436.1	363.07	310.8	-478.7	-463.1	0.00	0.00	0.00
4,600.0	13.38	302.99	4,533.4	265.78	323.4	-498.1	-481.9	0.00	0.00	0.00
4,700.0	13.38	302.99	4,630.7	168.50	336.0	-517.5	-500.7	0.00	0.00	0.00
4,800.0	13.38	302.99	4,728.0	71.21	348.6	-536.9	-519.4	0.00	0.00	0.00

Database:	EDM 5000.1 Single User Db	Local Co-ordinate Reference:	Well STATE LONGHORN D14-11-12XRLNB
Company:	BONANZA CREEK ENERGY INC.	TVD Reference:	KB-EST @ 4799.2usft (Original Well Elev)
Project:	WELD COUNTY, COLORADO (NAD 83)	MD Reference:	KB-EST @ 4799.2usft (Original Well Elev)
Site:	SW SW SEC. 11 T3N R63W 6th P.M.	North Reference:	True
Well:	STATE LONGHORN D14-11-12XRLNB	Survey Calculation Method:	Minimum Curvature
Wellbore:	ORIGINAL WELLBORE		
Design:	PROPOSAL #1		

Planned Survey

MD (usft)	Inc (°)	Azi (°)	TVD (usft)	SS (usft)	+N/-S (usft)	+E/-W (usft)	Vertical Section (usft)	Dogleg Rate (°/100usft)	Build Rate (°/100usft)	Turn Rate (°/100usft)
4,900.0	13.38	302.99	4,825.3	-26.08	361.2	-556.3	-538.2	0.00	0.00	0.00
5,000.0	13.38	302.99	4,922.6	-123.36	373.8	-575.7	-557.0	0.00	0.00	0.00
END OF TANGENT										
5,094.4	13.38	302.99	5,014.4	-215.20	385.7	-594.0	-574.7	0.00	0.00	0.00
5,100.0	13.26	302.99	5,019.9	-220.65	386.4	-595.1	-575.8	2.02	-2.02	0.00
5,200.0	11.26	302.99	5,117.6	-318.37	398.0	-612.9	-593.0	2.00	-2.00	0.00
5,300.0	9.26	302.99	5,216.0	-416.76	407.7	-627.9	-607.4	2.00	-2.00	0.00
5,400.0	7.26	302.99	5,314.9	-515.72	415.5	-639.9	-619.1	2.00	-2.00	0.00
5,500.0	5.26	302.99	5,414.3	-615.12	421.4	-649.1	-628.0	2.00	-2.00	0.00
5,600.0	3.26	302.99	5,514.0	-714.83	425.5	-655.3	-634.0	2.00	-2.00	0.00
5,700.0	1.26	302.99	5,614.0	-814.75	427.6	-658.6	-637.2	2.00	-2.00	0.00
EOD TO VERTICAL										
5,763.2	0.00	0.00	5,677.1	-877.95	428.0	-659.2	-637.8	2.00	-2.00	0.00
KOP (8°/100ft BUR)										
5,793.2	0.00	0.00	5,707.1	-907.95	428.0	-659.2	-637.8	0.00	0.00	0.00
5,800.0	0.55	89.83	5,713.9	-914.75	428.0	-659.2	-637.7	8.05	8.05	0.00
5,900.0	8.55	89.83	5,813.6	-1,014.35	428.0	-651.2	-629.8	8.00	8.00	0.00
6,000.0	16.55	89.83	5,911.1	-1,111.88	428.1	-629.5	-608.1	8.00	8.00	0.00
6,100.0	24.55	89.83	6,004.6	-1,205.44	428.2	-594.5	-573.1	8.00	8.00	0.00
6,200.0	32.55	89.83	6,092.4	-1,293.22	428.3	-546.7	-525.4	8.00	8.00	0.00
6,300.0	40.55	89.83	6,172.7	-1,373.49	428.5	-487.2	-466.0	8.00	8.00	0.00
6,400.0	48.55	89.83	6,243.9	-1,444.70	428.7	-417.1	-395.9	8.00	8.00	0.00
6,500.0	56.55	89.83	6,304.7	-1,505.46	429.0	-337.8	-316.7	8.00	8.00	0.00
6,600.0	64.55	89.83	6,353.8	-1,554.59	429.2	-250.8	-229.8	8.00	8.00	0.00
6,700.0	72.55	89.83	6,390.3	-1,591.13	429.5	-157.8	-136.9	8.00	8.00	0.00
START OF TANGENT										
6,730.7	75.00	89.83	6,398.9	-1,599.71	429.6	-128.3	-107.4	7.99	7.99	0.00
6,800.0	75.00	89.83	6,416.8	-1,617.64	429.8	-61.4	-40.6	0.00	0.00	0.00
END OF TANGENT										
6,830.7	75.00	89.83	6,424.8	-1,625.59	429.9	-31.7	-10.9	0.00	0.00	0.00
6,900.0	80.55	89.83	6,439.5	-1,640.26	430.1	36.0	56.7	8.01	8.01	0.00
7,000.0	88.55	89.83	6,448.9	-1,649.75	430.4	135.4	156.1	8.00	8.00	0.00
HZ LP *NEW*: 1059ft FSL & 827.8ft FWL of Sec 11										
7,018.2	90.00	89.83	6,449.2	-1,649.98	430.4	153.6	174.2	7.98	7.98	0.00
7,100.0	90.00	89.83	6,449.2	-1,649.98	430.7	235.4	256.0	0.00	0.00	0.00
7,200.0	90.00	89.83	6,449.2	-1,649.98	431.0	335.4	355.9	0.00	0.00	0.00
7,300.0	90.00	89.83	6,449.2	-1,649.98	431.2	435.4	455.7	0.00	0.00	0.00
7,400.0	90.00	89.83	6,449.2	-1,649.98	431.5	535.4	555.6	0.00	0.00	0.00
7,500.0	90.00	89.83	6,449.2	-1,649.98	431.8	635.4	655.5	0.00	0.00	0.00
7,600.0	90.00	89.83	6,449.2	-1,649.98	432.1	735.4	755.4	0.00	0.00	0.00
7,700.0	90.00	89.83	6,449.2	-1,649.98	432.4	835.4	855.3	0.00	0.00	0.00
7,800.0	90.00	89.83	6,449.2	-1,649.98	432.7	935.4	955.2	0.00	0.00	0.00
7,900.0	90.00	89.83	6,449.2	-1,649.98	433.0	1,035.4	1,055.1	0.00	0.00	0.00
8,000.0	90.00	89.83	6,449.2	-1,649.98	433.3	1,135.4	1,155.0	0.00	0.00	0.00
8,100.0	90.00	89.83	6,449.2	-1,649.98	433.6	1,235.4	1,254.9	0.00	0.00	0.00
8,200.0	90.00	89.83	6,449.2	-1,649.98	433.9	1,335.4	1,354.8	0.00	0.00	0.00
8,300.0	90.00	89.83	6,449.2	-1,649.98	434.2	1,435.4	1,454.7	0.00	0.00	0.00
8,400.0	90.00	89.83	6,449.2	-1,649.98	434.5	1,535.4	1,554.6	0.00	0.00	0.00
8,500.0	90.00	89.83	6,449.2	-1,649.98	434.8	1,635.4	1,654.5	0.00	0.00	0.00
8,600.0	90.00	89.83	6,449.2	-1,649.98	435.1	1,735.4	1,754.4	0.00	0.00	0.00
8,700.0	90.00	89.83	6,449.2	-1,649.98	435.4	1,835.4	1,854.3	0.00	0.00	0.00
8,800.0	90.00	89.83	6,449.2	-1,649.98	435.8	1,935.4	1,954.2	0.00	0.00	0.00
8,900.0	90.00	89.83	6,449.2	-1,649.98	436.1	2,035.4	2,054.1	0.00	0.00	0.00

Database:	EDM 5000.1 Single User Db	Local Co-ordinate Reference:	Well STATE LONGHORN D14-11-12XRLNB
Company:	BONANZA CREEK ENERGY INC.	TVD Reference:	KB-EST @ 4799.2usft (Original Well Elev)
Project:	WELD COUNTY, COLORADO (NAD 83)	MD Reference:	KB-EST @ 4799.2usft (Original Well Elev)
Site:	SW SW SEC. 11 T3N R63W 6th P.M.	North Reference:	True
Well:	STATE LONGHORN D14-11-12XRLNB	Survey Calculation Method:	Minimum Curvature
Wellbore:	ORIGINAL WELLBORE		
Design:	PROPOSAL #1		

Planned Survey

MD (usft)	Inc (°)	Azi (°)	TVD (usft)	SS (usft)	+N/-S (usft)	+E/-W (usft)	Vertical Section (usft)	Dogleg Rate (°/100usft)	Build Rate (°/100usft)	Turn Rate (°/100usft)
9,000.0	90.00	89.83	6,449.2	-1,649.98	436.4	2,135.4	2,154.0	0.00	0.00	0.00
9,100.0	90.00	89.83	6,449.2	-1,649.98	436.7	2,235.4	2,253.9	0.00	0.00	0.00
9,200.0	90.00	89.83	6,449.2	-1,649.98	437.0	2,335.4	2,353.8	0.00	0.00	0.00
9,300.0	90.00	89.83	6,449.2	-1,649.98	437.3	2,435.4	2,453.7	0.00	0.00	0.00
9,400.0	90.00	89.83	6,449.2	-1,649.98	437.6	2,535.4	2,553.6	0.00	0.00	0.00
9,500.0	90.00	89.83	6,449.2	-1,649.99	437.9	2,635.4	2,653.5	0.00	0.00	0.00
9,600.0	90.00	89.83	6,449.2	-1,649.99	438.2	2,735.4	2,753.4	0.00	0.00	0.00
9,700.0	90.00	89.82	6,449.2	-1,649.99	438.5	2,835.4	2,853.3	0.00	0.00	0.00
9,800.0	90.00	89.82	6,449.2	-1,649.99	438.8	2,935.4	2,953.2	0.00	0.00	0.00
9,900.0	90.00	89.82	6,449.2	-1,649.99	439.1	3,035.4	3,053.1	0.00	0.00	0.00
10,000.0	90.00	89.82	6,449.2	-1,649.99	439.4	3,135.4	3,153.0	0.00	0.00	0.00
10,100.0	90.00	89.82	6,449.2	-1,649.99	439.7	3,235.4	3,252.9	0.00	0.00	0.00
10,200.0	90.00	89.82	6,449.2	-1,649.99	440.0	3,335.4	3,352.8	0.00	0.00	0.00
10,300.0	90.00	89.82	6,449.2	-1,649.99	440.3	3,435.4	3,452.7	0.00	0.00	0.00
10,400.0	90.00	89.82	6,449.2	-1,649.99	440.6	3,535.4	3,552.6	0.00	0.00	0.00
10,500.0	90.00	89.82	6,449.2	-1,649.99	440.9	3,635.4	3,652.5	0.00	0.00	0.00
10,600.0	90.00	89.82	6,449.2	-1,649.99	441.3	3,735.4	3,752.4	0.00	0.00	0.00
10,700.0	90.00	89.82	6,449.2	-1,649.99	441.6	3,835.4	3,852.3	0.00	0.00	0.00
10,800.0	90.00	89.82	6,449.2	-1,649.99	441.9	3,935.4	3,952.2	0.00	0.00	0.00
10,900.0	90.00	89.82	6,449.2	-1,649.99	442.2	4,035.4	4,052.1	0.00	0.00	0.00
11,000.0	90.00	89.82	6,449.2	-1,650.00	442.5	4,135.4	4,152.0	0.00	0.00	0.00
11,100.0	90.00	89.82	6,449.2	-1,650.00	442.8	4,235.4	4,251.9	0.00	0.00	0.00
11,200.0	90.00	89.82	6,449.2	-1,650.00	443.1	4,335.4	4,351.8	0.00	0.00	0.00
11,300.0	90.00	89.82	6,449.2	-1,650.00	443.4	4,435.4	4,451.7	0.00	0.00	0.00
11,400.0	90.00	89.82	6,449.2	-1,650.00	443.7	4,535.4	4,551.5	0.00	0.00	0.00
11,500.0	90.00	89.82	6,449.2	-1,650.00	444.0	4,635.4	4,651.4	0.00	0.00	0.00
MID-LAT TGT: 1053ft FSL & 0ft FEL of Sec 11										
11,537.5	90.00	89.82	6,449.2	-1,650.00	444.2	4,672.9	4,688.9	0.00	0.00	0.00
11,600.0	90.00	89.82	6,449.2	-1,650.00	444.4	4,735.4	4,751.3	0.00	0.00	0.00
11,700.0	90.00	89.82	6,449.2	-1,650.00	444.7	4,835.4	4,851.2	0.00	0.00	0.00
11,800.0	90.00	89.82	6,449.2	-1,650.00	445.0	4,935.4	4,951.1	0.00	0.00	0.00
11,900.0	90.00	89.82	6,449.2	-1,650.00	445.3	5,035.4	5,051.0	0.00	0.00	0.00
12,000.0	90.00	89.82	6,449.2	-1,650.00	445.6	5,135.4	5,150.9	0.00	0.00	0.00
12,100.0	90.00	89.82	6,449.2	-1,650.00	445.9	5,235.4	5,250.8	0.00	0.00	0.00
12,200.0	90.00	89.82	6,449.2	-1,650.01	446.3	5,335.4	5,350.7	0.00	0.00	0.00
12,300.0	90.00	89.82	6,449.2	-1,650.01	446.6	5,435.4	5,450.6	0.00	0.00	0.00
12,400.0	90.00	89.81	6,449.2	-1,650.01	446.9	5,535.4	5,550.5	0.00	0.00	0.00
12,500.0	90.00	89.81	6,449.2	-1,650.01	447.2	5,635.4	5,650.4	0.00	0.00	0.00
12,600.0	90.00	89.81	6,449.2	-1,650.01	447.5	5,735.4	5,750.3	0.00	0.00	0.00
12,700.0	90.00	89.81	6,449.2	-1,650.01	447.9	5,835.4	5,850.2	0.00	0.00	0.00
12,800.0	90.00	89.81	6,449.2	-1,650.01	448.2	5,935.4	5,950.1	0.00	0.00	0.00
12,900.0	90.00	89.81	6,449.2	-1,650.01	448.5	6,035.4	6,050.0	0.00	0.00	0.00
13,000.0	90.00	89.81	6,449.2	-1,650.01	448.9	6,135.4	6,149.9	0.00	0.00	0.00
13,100.0	90.00	89.81	6,449.2	-1,650.01	449.2	6,235.4	6,249.8	0.00	0.00	0.00
13,200.0	90.00	89.81	6,449.2	-1,650.01	449.5	6,335.4	6,349.7	0.00	0.00	0.00
13,300.0	90.00	89.81	6,449.2	-1,650.01	449.9	6,435.4	6,449.6	0.00	0.00	0.00
13,400.0	90.00	89.81	6,449.2	-1,650.01	450.2	6,535.4	6,549.5	0.00	0.00	0.00
13,500.0	90.00	89.81	6,449.2	-1,650.01	450.5	6,635.4	6,649.4	0.00	0.00	0.00
13,600.0	90.00	89.81	6,449.2	-1,650.01	450.9	6,735.4	6,749.3	0.00	0.00	0.00
13,700.0	90.00	89.81	6,449.2	-1,650.01	451.2	6,835.4	6,849.2	0.00	0.00	0.00
13,800.0	90.00	89.80	6,449.2	-1,650.01	451.5	6,935.4	6,949.1	0.00	0.00	0.00
13,900.0	90.00	89.80	6,449.2	-1,650.01	451.9	7,035.4	7,049.0	0.00	0.00	0.00
14,000.0	90.00	89.80	6,449.2	-1,650.01	452.2	7,135.4	7,148.9	0.00	0.00	0.00
14,100.0	90.00	89.80	6,449.2	-1,650.01	452.6	7,235.4	7,248.8	0.00	0.00	0.00

Database:	EDM 5000.1 Single User Db	Local Co-ordinate Reference:	Well STATE LONGHORN D14-11-12XRLNB
Company:	BONANZA CREEK ENERGY INC.	TVD Reference:	KB-EST @ 4799.2usft (Original Well Elev)
Project:	WELD COUNTY, COLORADO (NAD 83)	MD Reference:	KB-EST @ 4799.2usft (Original Well Elev)
Site:	SW SW SEC. 11 T3N R63W 6th P.M.	North Reference:	True
Well:	STATE LONGHORN D14-11-12XRLNB	Survey Calculation Method:	Minimum Curvature
Wellbore:	ORIGINAL WELLBORE		
Design:	PROPOSAL #1		

Planned Survey

MD (usft)	Inc (°)	Azi (°)	TVD (usft)	SS (usft)	+N/-S (usft)	+E/-W (usft)	Vertical Section (usft)	Dogleg Rate (°/100usft)	Build Rate (°/100usft)	Turn Rate (°/100usft)
14,200.0	90.00	89.80	6,449.2	-1,650.01	452.9	7,335.4	7,348.7	0.00	0.00	0.00
14,300.0	90.00	89.80	6,449.2	-1,650.01	453.3	7,435.4	7,448.6	0.00	0.00	0.00
14,400.0	90.00	89.80	6,449.2	-1,650.01	453.6	7,535.4	7,548.5	0.00	0.00	0.00
14,500.0	90.00	89.80	6,449.2	-1,650.01	454.0	7,635.4	7,648.4	0.00	0.00	0.00
14,600.0	90.00	89.80	6,449.2	-1,650.01	454.3	7,735.4	7,748.3	0.00	0.00	0.00
14,700.0	90.00	89.80	6,449.2	-1,650.01	454.7	7,835.4	7,848.2	0.00	0.00	0.00
14,800.0	90.00	89.80	6,449.2	-1,650.01	455.0	7,935.4	7,948.1	0.00	0.00	0.00
14,900.0	90.00	89.80	6,449.2	-1,650.01	455.4	8,035.4	8,048.0	0.00	0.00	0.00
15,000.0	90.00	89.80	6,449.2	-1,650.01	455.7	8,135.4	8,147.9	0.00	0.00	0.00
15,100.0	90.00	89.79	6,449.2	-1,650.01	456.1	8,235.4	8,247.8	0.00	0.00	0.00
15,200.0	90.00	89.79	6,449.2	-1,650.01	456.5	8,335.4	8,347.7	0.00	0.00	0.00
15,300.0	90.00	89.79	6,449.2	-1,650.01	456.8	8,435.4	8,447.6	0.00	0.00	0.00
15,400.0	90.00	89.79	6,449.2	-1,650.01	457.2	8,535.4	8,547.5	0.00	0.00	0.00
15,500.0	90.00	89.79	6,449.2	-1,650.01	457.5	8,635.4	8,647.4	0.00	0.00	0.00
15,600.0	90.00	89.79	6,449.2	-1,650.01	457.9	8,735.4	8,747.3	0.00	0.00	0.00
15,700.0	90.00	89.79	6,449.2	-1,650.01	458.3	8,835.4	8,847.2	0.00	0.00	0.00
15,800.0	90.00	89.79	6,449.2	-1,650.00	458.6	8,935.4	8,947.1	0.00	0.00	0.00
15,900.0	90.00	89.79	6,449.2	-1,650.00	459.0	9,035.4	9,047.0	0.00	0.00	0.00
16,000.0	90.00	89.79	6,449.2	-1,650.00	459.4	9,135.4	9,146.9	0.00	0.00	0.00
16,100.0	90.00	89.79	6,449.2	-1,650.00	459.7	9,235.4	9,246.8	0.00	0.00	0.00
16,200.0	90.00	89.79	6,449.2	-1,650.00	460.1	9,335.4	9,346.7	0.00	0.00	0.00
16,300.0	90.00	89.79	6,449.2	-1,650.00	460.5	9,435.4	9,446.6	0.00	0.00	0.00
BHL: 1049ft FSL & 470ft FEL of Sec 12										
16,397.0	90.00	89.78	6,449.2	-1,650.00	460.9	9,532.3	9,543.5	0.00	0.00	0.00

Plan Annotations

MD (usft)	TVD (usft)	Local Coordinates		Comment
		+N/-S (usft)	+E/-W (usft)	
0.0	0.0	0.0	0.0	SHL: 628.6ft FSL & 674.2ft FWL of Sec 11
1,700.0	1,700.0	0.0	0.0	START NUDGE (2°/100ft BUR)
2,368.8	2,362.7	42.3	-65.2	EOB TO 13.38° INC
5,094.4	5,014.4	385.7	-594.0	END OF TANGENT
5,763.2	5,677.1	428.0	-659.2	EOD TO VERTICAL
5,793.2	5,707.1	428.0	-659.2	KOP (8°/100ft BUR)
6,730.7	6,398.9	429.6	-128.3	START OF TANGENT
6,830.7	6,424.8	429.9	-31.7	END OF TANGENT
7,018.2	6,449.2	430.4	153.6	HZ LP *NEW*: 1059ft FSL & 827.8ft FWL of Sec 11
11,537.5	6,449.2	444.2	4,672.9	MID-LAT TGT: 1053ft FSL & 0ft FEL of Sec 11
16,397.0	6,449.2	460.9	9,532.3	BHL: 1049ft FSL & 470ft FEL of Sec 12