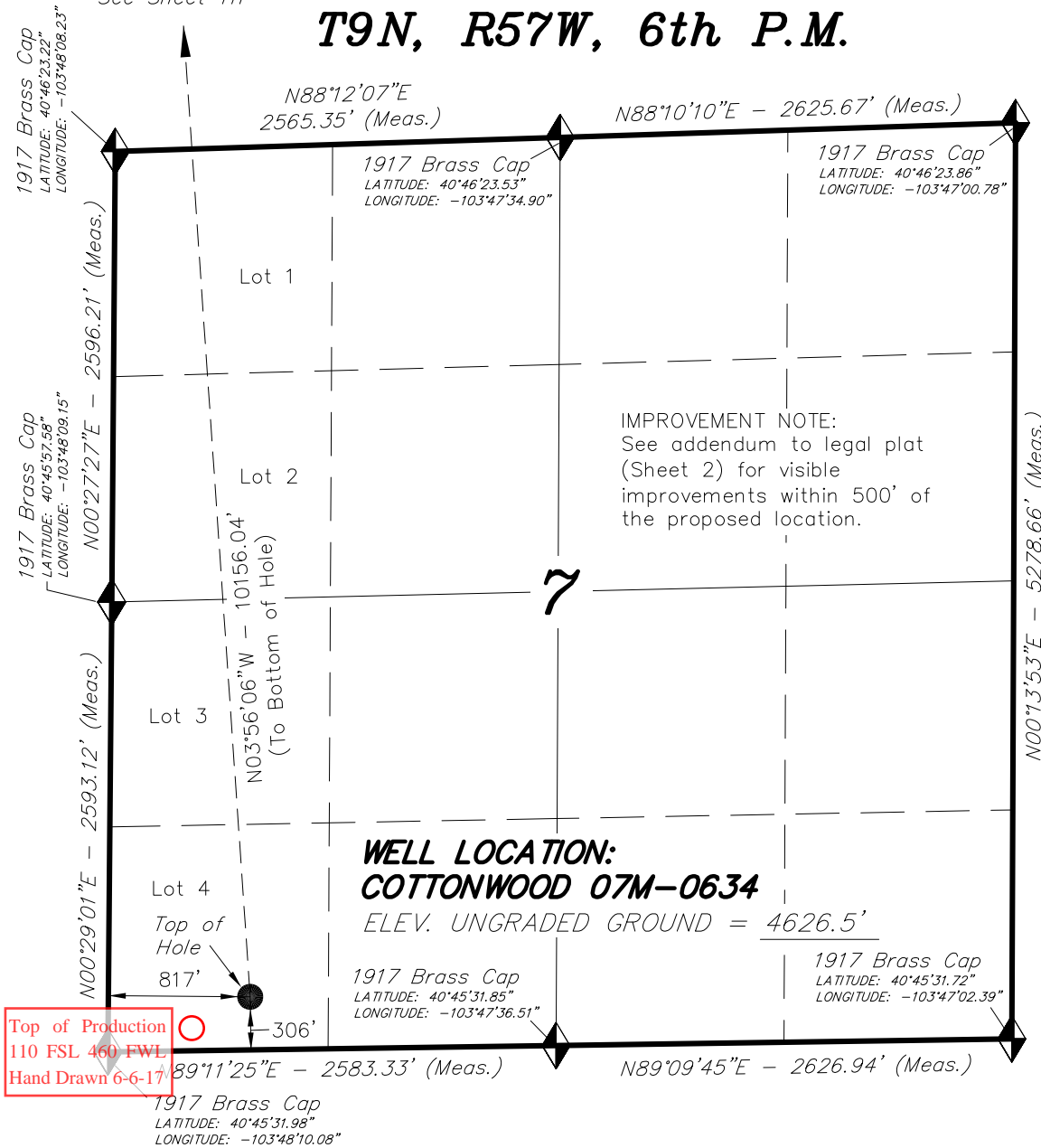


See Sheet 1ff

# T9N, R57W, 6th P.M.

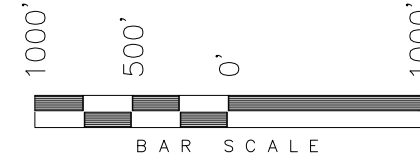


BASIS OF ELEV; Elevations are based on an N.G.S. OPUS Correction. LOCATION: LAT. 40°46'03.41" LONG. 103°46'26.97" (Tristate Aluminum Cap) NAVD 88 Elev. 4750.22'

NAD 83 (SURFACE LOCATION)	
LATITUDE =	40°45'34.96" (40.759710°)
LONGITUDE =	103°47'59.34" (103.799818°)
NAD 27 (SURFACE LOCATION)	
LATITUDE =	40°45'35.01" (40.759724°)
LONGITUDE =	103°47'57.53" (103.799315°)

## WHITING OIL & GAS CORP.

WELL LOCATION, COTTONWOOD 07M-0634 LOCATED AS SHOWN IN THE SW 1/4 SW 1/4 (LOT 4) OF SECTION 7, T9N, R57W, 6th P.M. WELD COUNTY, COLORADO.



### NOTES:

- Well footages are measured at right angles to the Section Lines.
- G.P.S. Operator: G. Olsen, (PDOP) = 1.3

◆ = SECTION CORNERS LOCATED

THIS IS TO CERTIFY THAT THE ABOVE PLAT WAS PREPARED FROM FIELD NOTES OF REAL SURVEYS MADE BY ME OR UNDER MY SUPERVISION. THE LOCATION HAS BEEN STAKED ON THE GROUND AS SHOWN ON THE PLAT, AND THAT THE SAME ARE TRUE AND CORRECT TO THE BEST OF MY KNOWLEDGE AND BELIEF.

06-24-15  
# 30125  
REGISTERED LAND SURVEYOR  
REGISTRATION NO. 30125  
STATE OF COLORADO  
LAND SURVEYOR

## TRI STATE LAND SURVEYING & CONSULTING

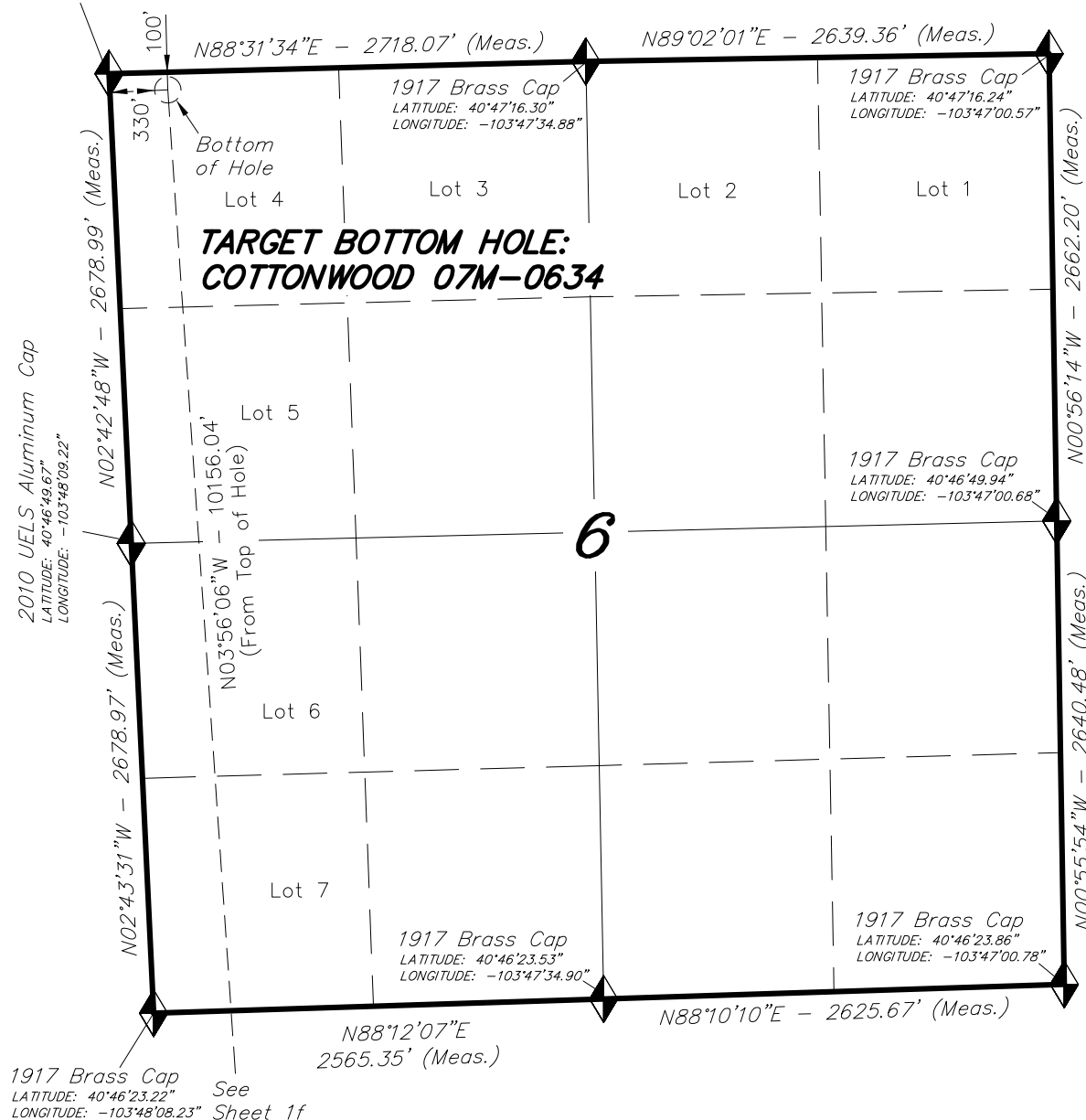
180 NORTH VERNAL AVE. - VERNAL, UTAH 84078  
(435) 781-2501

DATE SURVEYED: 02-09-15	SURVEYED BY: G.D.O.	SHEET  1f
DATE DRAWN: 02-25-15	DRAWN BY: F.T.M.	
REVISED: 06-24-15 F.T.M.	SCALE: 1" = 1000'	

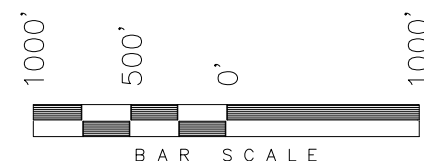
2010 Private  
Aluminum Cap  
LATITUDE: 40°47'16.13"  
LONGITUDE: -103°48'10.20"

**T9N, R57W, 6th P.M.**

**WHITING OIL & GAS CORP.**



TARGET BOTTOM HOLE, COTTONWOOD  
07M-0634, LOCATED AS SHOWN IN THE  
NW 1/4 NW 1/4 (LOT 4) OF SECTION 6,  
T9N, R57W, 6th P.M. WELD COUNTY,  
COLORADO.



**NOTES:**

1. Bearings are based on Global  
Positioning Satellite observations.

◆ = SECTION CORNERS LOCATED

THIS IS TO CERTIFY THAT THE ABOVE PLAT WAS  
PREPARED FROM FIELD NOTES OF REAL SURVEYS  
MADE BY ME OR UNDER MY SUPERVISION. THE  
LOCATION HAS BEEN STAKED ON THE GROUND AS  
SHOWN ON THE PLAT, AND THAT THE SAME ARE  
TRUE AND CORRECT TO THE BEST OF MY  
KNOWLEDGE AND BELIEF.

07-06-15  
# 30125  
REGISTERED LAND SURVEYOR  
REGISTRATION NO. 30125  
STATE OF COLORADO

BASIS OF ELEV; Elevations are based on an  
N.G.S. OPUS Correction. LOCATION:  
LAT. 40°46'03.41" LONG. 103°46'26.97"  
(Tristate Aluminum Cap) NAVD 88 Elev. 4750.22'

NAD 83 (BOTTOM HOLE LOCATION)	
LATITUDE	= 40°47'15.16" (40.787545°)
LONGITUDE	= 103°48'05.88" (103.801632°)
NAD 27 (BOTTOM HOLE LOCATION)	
LATITUDE	= 40°47'15.21" (40.787559°)
LONGITUDE	= 103°48'04.07" (103.801130°)

**TRI STATE LAND SURVEYING & CONSULTING**  
180 NORTH VERNAL AVE. - VERNAL, UTAH 84078  
(435) 781-2501

DATE SURVEYED: 02-09-15	SURVEYED BY: G.D.O.	SHEET  1ff
DATE DRAWN: 02-25-15	DRAWN BY: M.W.	
REVISED: 07-06-15 F.T.M.	SCALE: 1" = 1000'	