

T1N, R68W

NW. COR.
SEC. 8, T1N, R68W
FOUND 3 1/4" BLM
BRASS CAP

S 89°36'55" W 2754.26' (M)

S 89°33'45" W 2720.88' (M)

NE. COR.
SEC. 8, T1N, R68W
FOUND 2 1/2" ALUM. CAP
L.S. NO 38459

SURFACE LOCATION: NAD 83
GROUND ELEVATION= 5062.9'
LATITUDE= 40.062068°
LONGITUDE= -105.032337°
LATITUDE= 40°03'43.445"
LONGITUDE= -105°01'56.414"
HEEL LOCATION: NAD 83
LATITUDE= 40.058103°
LONGITUDE= -105.029963°
LATITUDE= 40°03'29.171"
LONGITUDE= -105°01'47.867"
BOTTOM HOLE LOCATION: NAD 83
LATITUDE= 40.043906°
LONGITUDE= -105.029532°
LATITUDE= 40°02'38.062"
LONGITUDE= -105°01'46.315"

N. 1/4 COR.
SEC. 8, T1N, R68W
FOUND 3 1/4" BLM
BRASS CAP

N 00°55'53" E 2672.82' (M)

N 00°01'47" E
2671.86' (M)

N 00°48'32" E 2674.27' (M)

W. 1/4 COR.
SEC. 8, T1N, R68W
FOUND 3 1/4" ALUM. CAP
P.L.S. NO. 37971

S 89°36'31" W
2796.33' (M)

S 89°36'08" W
2684.49' (M)

E. 1/4 COR.
SEC. 8, T1N, R68W
FOUND 2 1/2" ALUM. CAP
L.S. NO. 23501

8
CENTER 1/4 COR.
SEC. 8, T1N, R68W
FOUND 3 1/4" ALUM. CAP
P.L.S. NO. 37990

PAPA JO 2-25 36N-17HZ

SURFACE LOCATION

1399'

1402'

N 00°00'58" E
2700.51' (M)

N 00°49'07" E 2673.94' (M)

SW. COR.
SEC. 8, T1N, R68W
FOUND 3 1/4" BLM
BRASS CAP

S 89°01'40" W 2647.82' (M)

S. 1/4 COR.
SEC. 8, T1N, R68W
FOUND 3 1/4" ALUM. CAP
L.S. NO. 28258

S 89°00'57" W 2647.38' (M)

SE. COR.
SEC. 8, T1N, R68W
FOUND 2 1/2" ALUM. CAP
L.S. NO. 23501

WELL BORE CONTINUES
INTO SECTION 17

MATCH LINE
SEE SHEET 2

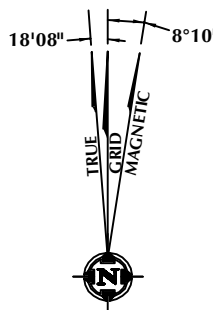
CERTIFICATE OF SURVEYOR:

THIS IS TO CERTIFY THAT THE ABOVE PLAT WAS PREPARED FROM FIELD NOTES OF ACTUAL SURVEY MADE BY ME OR UNDER MY SUPERVISION AND THAT THE SAME ARE TRUE AND CORRECT TO THE BEST OF MY KNOWLEDGE AND BELIEF. THIS CERTIFICATE DOES NOT REPRESENT A LAND SURVEY PLAT OR IMPROVEMENT SURVEY PLAT AS DEFINED BY C.R.S. 38-51-102 AND CANNOT BE RELIED UPON TO DETERMINE OWNERSHIP.

Randall K. French
38512

RANDALL K. FRENCH
PROFESSIONAL LAND SURVEYOR
COLORADO REGISTRATION NUMBER 18512

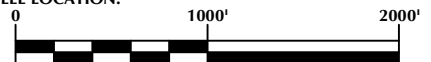
NOTICE:
ACCORDING TO COLORADO STATE LAW YOU MUST COMMENCE ANY LEGAL ACTION BASED UPON ANY DEFECT IN THIS SURVEY WITHIN THREE YEARS AFTER YOU FIRST DISCOVER SUCH DEFECT. IN NO EVENT MAY ANY ACTION BASED UPON ANY DEFECT IN THIS SURVEY BE COMMENCED MORE THAN TEN YEARS FROM THE DATE ON THE CERTIFICATION SHOWN HEREON.



NOTE:
MAGNETIC NORTH IS CURRENT AS OF 1/5/2016.
MAGNETIC NORTH CHANGES WEST 0°06' PER YEAR.

NOTES:

- ▲ INDICATES SECTION CORNER
- INDICATES CALCULATED CORNER
- ELEVATION BASED ON NAVD88 (GEOID12B)
- BASIS OF BEARING DERIVED FROM COLORADO COORDINATE SYSTEM OF 1983 NORTH ZONE.
- ALL MEASURED DISTANCES ARE GRID.
- COMBINED SCALE FACTOR: .99972035 CALCULATED FROM THE S. 1/4 CORNER OF SECTION 17, T1N, R68W
- OPERATOR: ROB WILSON / PDOP = 1.6
- SEE ADDENDUM TO WELL LOCATION CERTIFICATE FOR EXISTING IMPROVEMENTS WITHIN 500' OF THE WELL PAD.
- WELL FOOTAGES ARE MEASURED AT RIGHT ANGLES TO THE SECTION LINES.
- THE BOTTOM OF HOLE BEARS S01°38'24"E, 5173' FROM THE HEEL LOCATION.



SCALE: 1" = 1000'

WELL PAD - PAPA JO 2-25 35N2-17HZ

PAPA JO 2-25 36N-17HZ
WELL LOCATION CERTIFICATE
1402' FSL & 1399' FWL NESW (SURFACE)
LOCATED IN SECTION 8
50' FNL & 1996' FWL NENW (HEEL)
50' FSL & 2124' FWL SESW (BOTTOM)
LOCATED IN SECTION 17
T1N, R68W, 6TH P.M.
WELD COUNTY, COLORADO

**Kerr-McGee Oil &
Gas Onshore L.P.**
1099 18th Street
Denver, Colorado 80202



CONSULTING, LLC

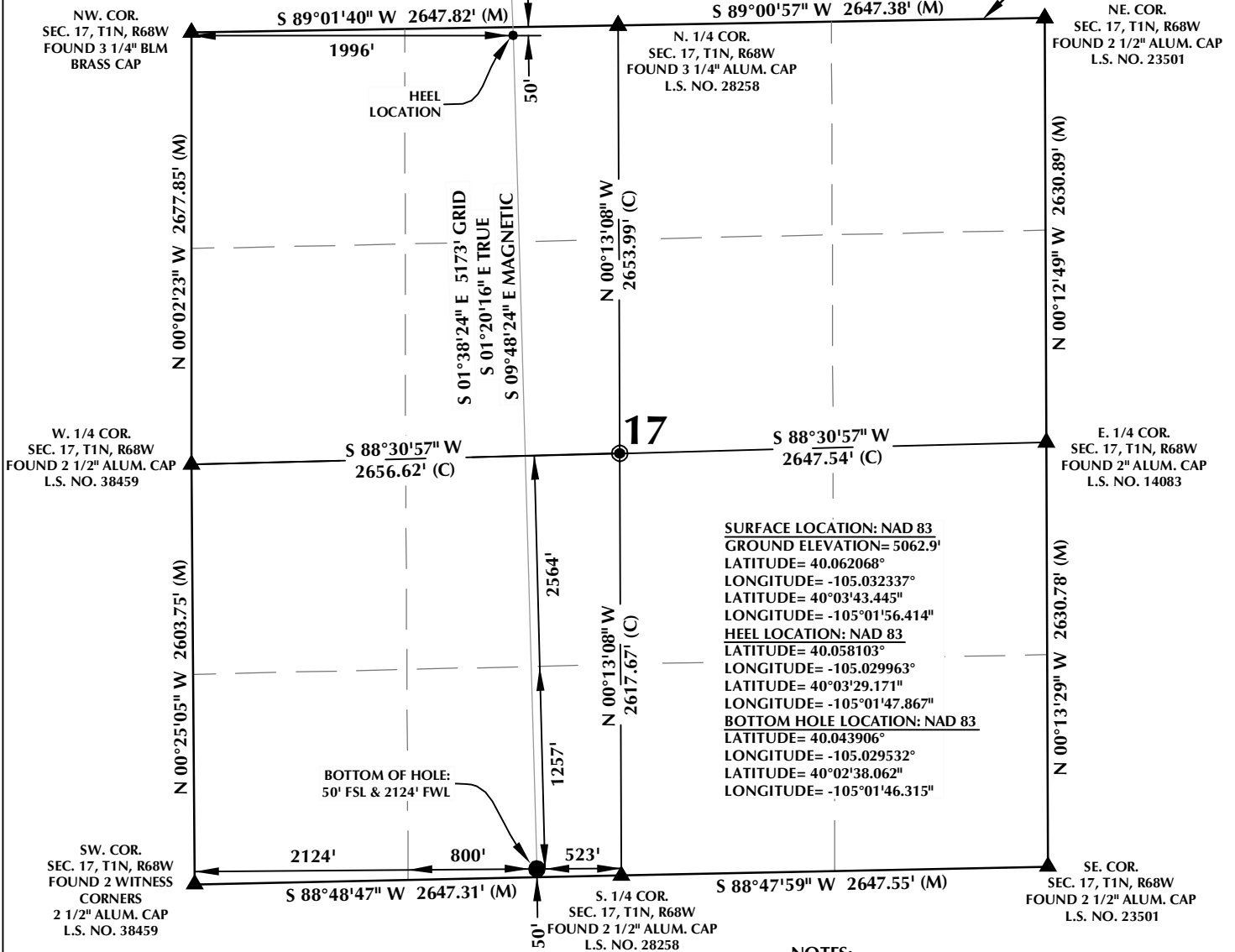
SHERIDAN OFFICE
1095 Saberton Avenue
Sheridan, Wyoming 82801
Phone 307-674-0609

LOVELAND OFFICE
1635 Foxtrail Drive, Suite 204
Loveland, Colorado 80538
Phone 970-776-4331

DRAFTED BY:	LMO	CHECKED BY:	RKF	SHEET NO:
DATE DRAFTED:	8/24/16	DATE SURVEYED:	6/30/16	1
REVISED:		FILE NAME:	16-04	1 OF 2

T1N, R68W

MATCH LINE
SEE SHEET 1



SURFACE LOCATION: NAD 83
 GROUND ELEVATION= 5062.9'
 LATITUDE= 40.062068°
 LONGITUDE= -105.032337°
HEEL LOCATION: NAD 83
 LATITUDE= 40.058103°
 LONGITUDE= -105.029963°
BOTTOM HOLE LOCATION: NAD 83
 LATITUDE= 40.043906°
 LONGITUDE= -105.029532°
 LONGITUDE= -105°01'46.315"

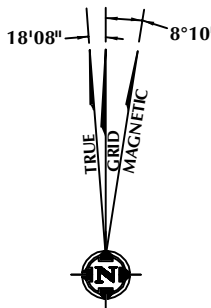
CERTIFICATE OF SURVEYOR:

THIS IS TO CERTIFY THAT THE ABOVE PLAT WAS PREPARED FROM FIELD NOTES OF ACTUAL SURVEY MADE BY ME OR UNDER MY SUPERVISION AND THAT THE SAME ARE TRUE AND CORRECT TO THE BEST OF MY KNOWLEDGE AND BELIEF. THIS CERTIFICATE DOES NOT REPRESENT A LAND SURVEY PLAT OR IMPROVEMENT SURVEY PLAT AS DEFINED BY C.R.S. 38-51-202 AND CANNOT BE RELIED UPON TO DETERMINE OWNERSHIP.

Randall K. French
 RANDALL K. FRENCH
 PROFESSIONAL LAND SURVEYOR
 COLORADO REGISTRATION NUMBER 18512

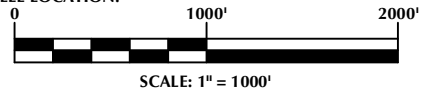
NOTICE:
 ACCORDING TO COLORADO STATE LAW YOU MUST COMMENCE ANY LEGAL ACTION BASED UPON ANY DEFECT IN THIS SURVEY WITHIN THREE YEARS AFTER YOU FIRST DISCOVER SUCH DEFECT. IN NO EVENT MAY ANY ACTION BASED UPON ANY DEFECT IN THIS SURVEY BE COMMENCED MORE THAN TEN YEARS FROM THE DATE ON THE CERTIFICATION SHOWN HEREON.

NOTE:
 MAGNETIC NORTH IS CURRENT AS OF 1/5/2016.
 MAGNETIC NORTH CHANGES WEST 0°06' PER YEAR.



NOTES:

- ▲ INDICATES SECTION CORNER
- INDICATES CALCULATED CORNER
- ELEVATION BASED ON NAVD88 (GEOID12B)
- BASIS OF BEARING DERIVED FROM COLORADO COORDINATE SYSTEM OF 1983 NORTH ZONE.
- ALL MEASURED DISTANCES ARE GRID.
- COMBINED SCALE FACTOR: .99972035 CALCULATED FROM THE S. 1/4 CORNER OF SECTION 17, T1N, R68W
- OPERATOR: ROB WILSON / PDOP = 1.6
- SEE ADDENDUM TO WELL LOCATION CERTIFICATE FOR EXISTING IMPROVEMENTS WITHIN 500' OF THE WELL PAD.
- WELL FOOTAGES ARE MEASURED AT RIGHT ANGLES TO THE SECTION LINES.
- THE BOTTOM OF HOLE BEARS S01°38'24"E, 5173' FROM THE HEEL LOCATION.



WELL PAD - PAPA JO 2-25 35N2-17HZ

PAPA JO 2-25 36N-17HZ
 WELL LOCATION CERTIFICATE
 1402' FSL & 1399' FWL NESW (SURFACE)
 LOCATED IN SECTION 8
 50' FNL & 1996' FWL NENW (HEEL)
 50' FSL & 2124' FWL SESW (BOTTOM)
 LOCATED IN SECTION 17
 T1N, R68W, 6TH P.M.
 WELD COUNTY, COLORADO

**Kerr-McGee Oil &
 Gas Onshore L.P.**
 1099 18th Street
 Denver, Colorado 80202



CONSULTING, LLC

SHERIDAN OFFICE
 1095 Saberton Avenue
 Sheridan, Wyoming 82801
 Phone 307-674-0609

LOVELAND OFFICE
 1635 Foxtrail Drive, Suite 204
 Loveland, Colorado 80538
 Phone 970-776-4331

DRAFTED BY:	LMO	CHECKED BY:	RKF	SHEET NO:
DATE DRAFTED:	8/24/16	DATE SURVEYED:	6/30/16	2
REVISED:		FILE NAME:	16-04	2 OF 2