



Cathedral Energy Services
 6622 Willowbrook Park Drive
 Houston, Tx 77066
 281-440-1010 (Office)
 281-440-1025 (Fax)

Woolley Becky 2A-7H-E168

Scale 5":100' - TVD
11/28/2016 12:02 AM

Oper. Company: Crestone Peak **State:** Colorado
Well: Woolley Becky 2A-7H-E168 **County:** Weld
Field: DJ Basin **Country:** US
Rig: Ensign 140 **Location:** S7-T1N-R68W
Well ID: 05-123-38111 **Start Date:** 11/15/2020 08:00:00
Job Number: 165062 **End Date:** 11/28/2016 00:30:00

Gamma Ray Log
 Gamma Correction: 3.937
 Gamma Depth: 38.33
Notes: Survey Depth: 50
 Section Plan: 0.00
 North American Datum 1983
 Magnetic North: 8.56°

Latitude: 40.066854 **Elev GL:** 4998
Longitude: -105.053469 **Elev DF:** 23
Elev KB: 5021

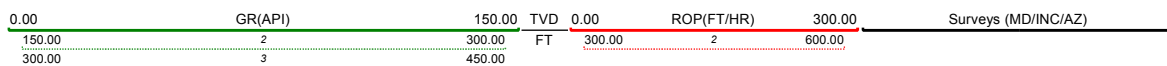
Notes: Log & Survey Depths Relative to Kelly Bushing (KB) Depth

Operator 1: W. Steele **Operator 2:** C. Potter
Notes: Maximum Temperature: °f

Tool Run Data	Run #1	Run #2	Run #3	Run #4	Run #5
Tool S/N	1548	1548	1551		
Bit Size	8.75	8.75	8.75		
Cal Factor	3.937	3.937	3.937		
Survey Offset	57.00	55.00	50.00		
Gamma Offset	45.90	41.93	38.33		
Resistivity Offset	0.00	0.00	0.00		
Start Depth	1755.00	5120.00	7549.00		
StartDate	11/15/2016	11/19/2016	11/22/2016		
StartTime	08:00	18:00	09:01		
EndDepth	5120.00	7549.00	14830.00		
EndDate	11/18/2016	11/21/2016	11/28/2016		
EndTime	19:00	21:00	00:30		
Mud Type	OBM	OBM	OBM		
Mud Weight	10.5	9.6	9.7		
Funnel Viscosity	72	48	53		
Plastic Viscosity	17	11	16		
Yield Point	6	4	9		
Gel Strength	5	9	15		
Solids Content	13.3	10.6	13.5		
Chlorides	258000	168000	24672		
Temperature	117	160	226		

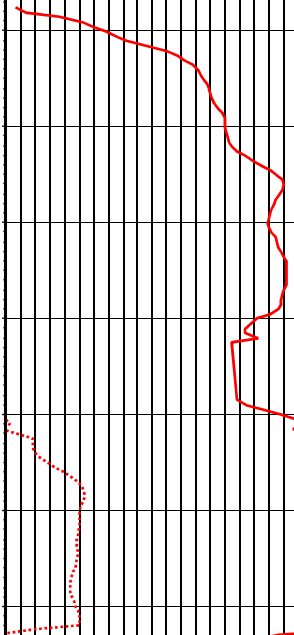
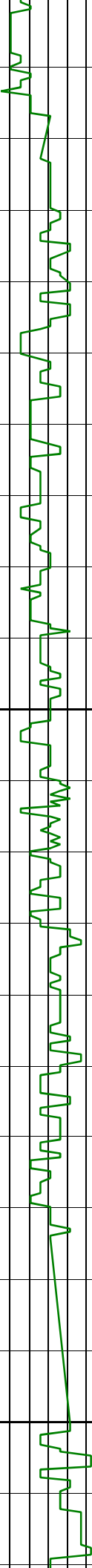
Hole Data			Casing Data		
Size	From	To	Size	From	To
8.75	1800.00	14830.00	9 5/8	0.00	1788.00

All interpretations are opinions based on inferences from electrical or other measurements and we cannot and do not guarantee the accuracy or correctness of any interpretation, and we shall not except in the case of gross or willful negligence on our part, be liable or responsible for any loss, cost damages or expenses incurred or sustained by anyone resulting from an interpretation made by any of our officers, agents, or employees.



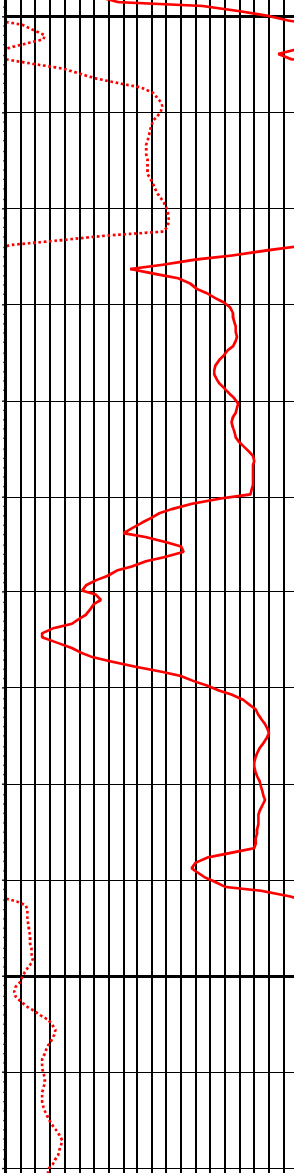
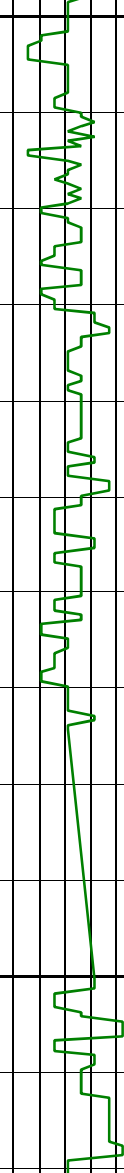
MD: 1808.00 INC: 4.40 AZ: 228.37

1,810 1,820 1,830 1,840 1,850 1,860 1,870 1,880 1,890 1,900 1,910 1,920 1,930 1,940 1,950 1,960 1,970 1,980 1,990 2,000 2,010 2,020

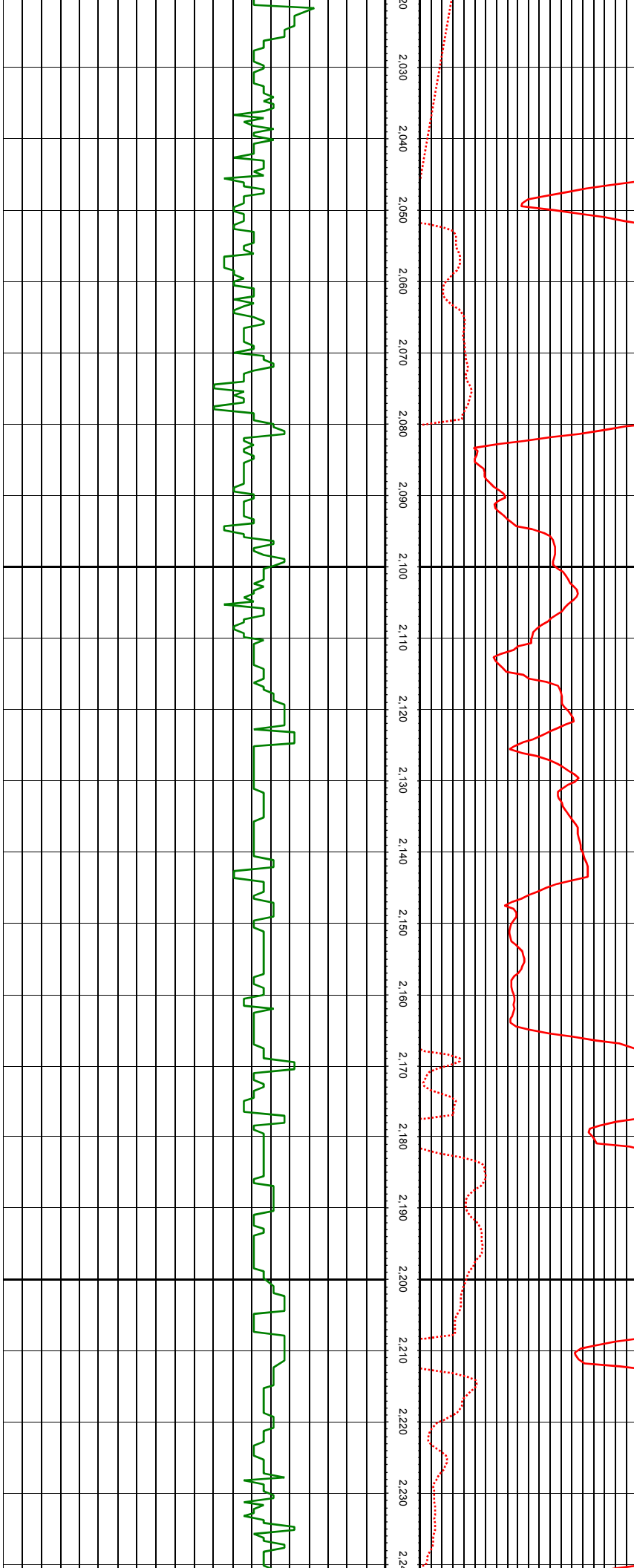


MD: 1902.00 INC: 4.31 AZ: 228.99

1,900 1,910 1,920 1,930 1,940 1,950 1,960 1,970 1,980 1,990 2,000 2,010 2,020

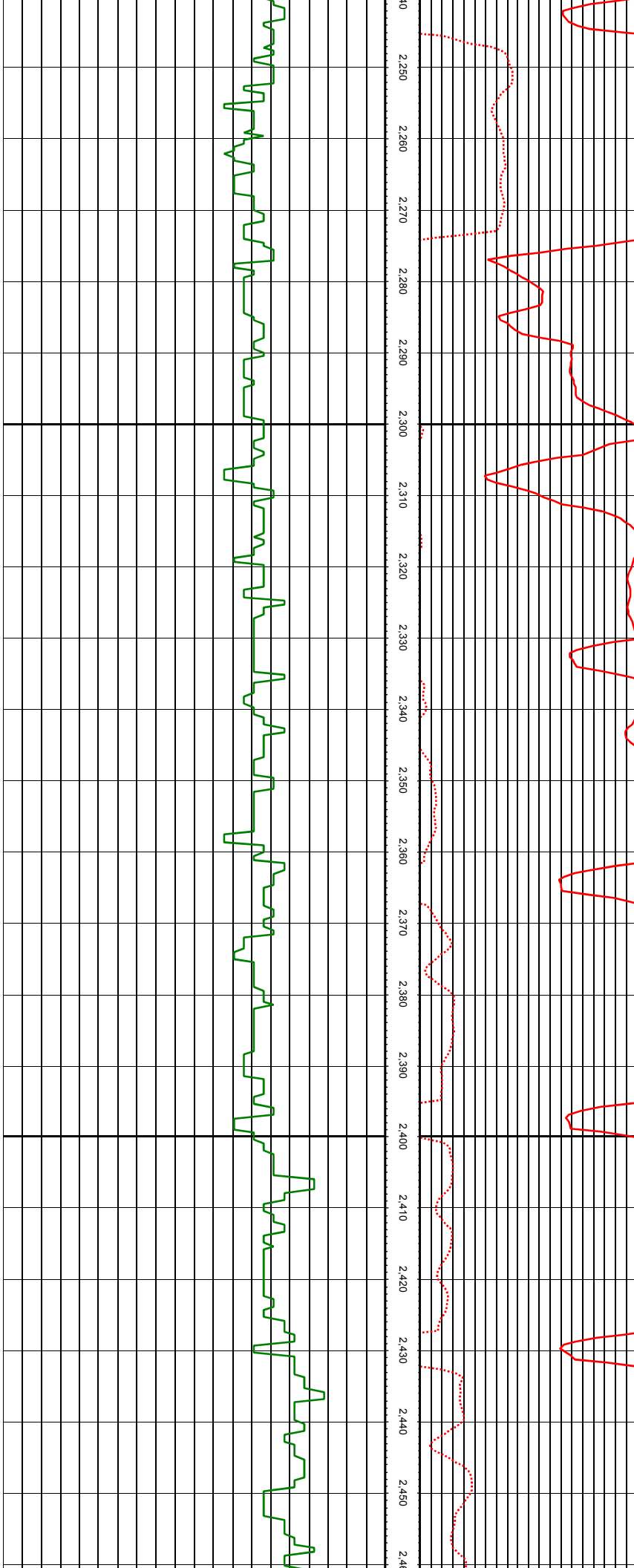


MD: 2028.00 INC: 4.57 AZ: 231.36



MD: 2123.00 INC: 5.71 AZ: 238.75

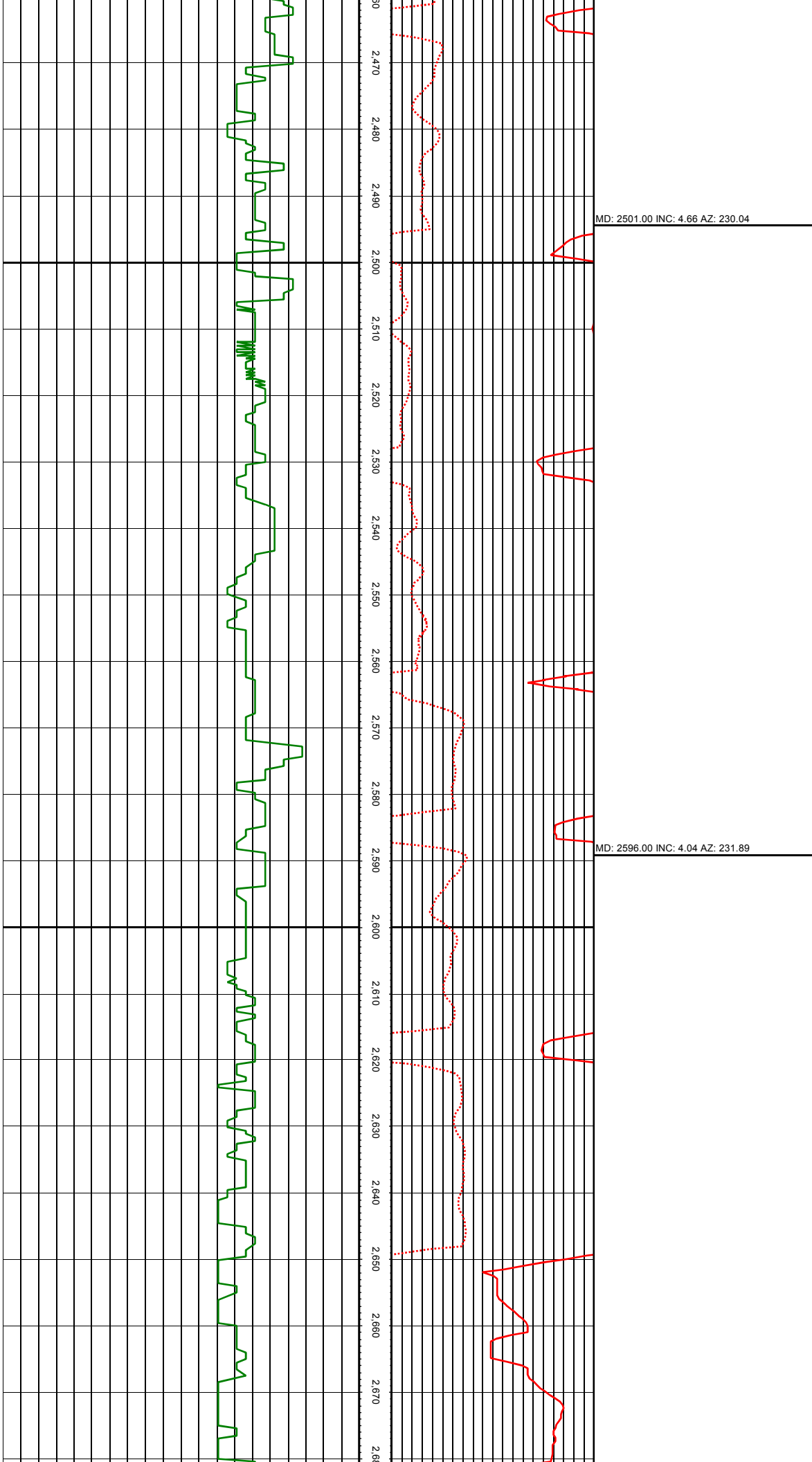
MD: 2217.00 INC: 5.54 AZ: 240.94



40
2,250
2,260
2,270
2,280
2,290
2,300
2,310
2,320
2,330
2,340
2,350
2,360
2,370
2,380
2,390
2,400
2,410
2,420
2,430
2,440
2,450
2,4

MD: 2312.00 INC: 5.89 AZ: 227.85

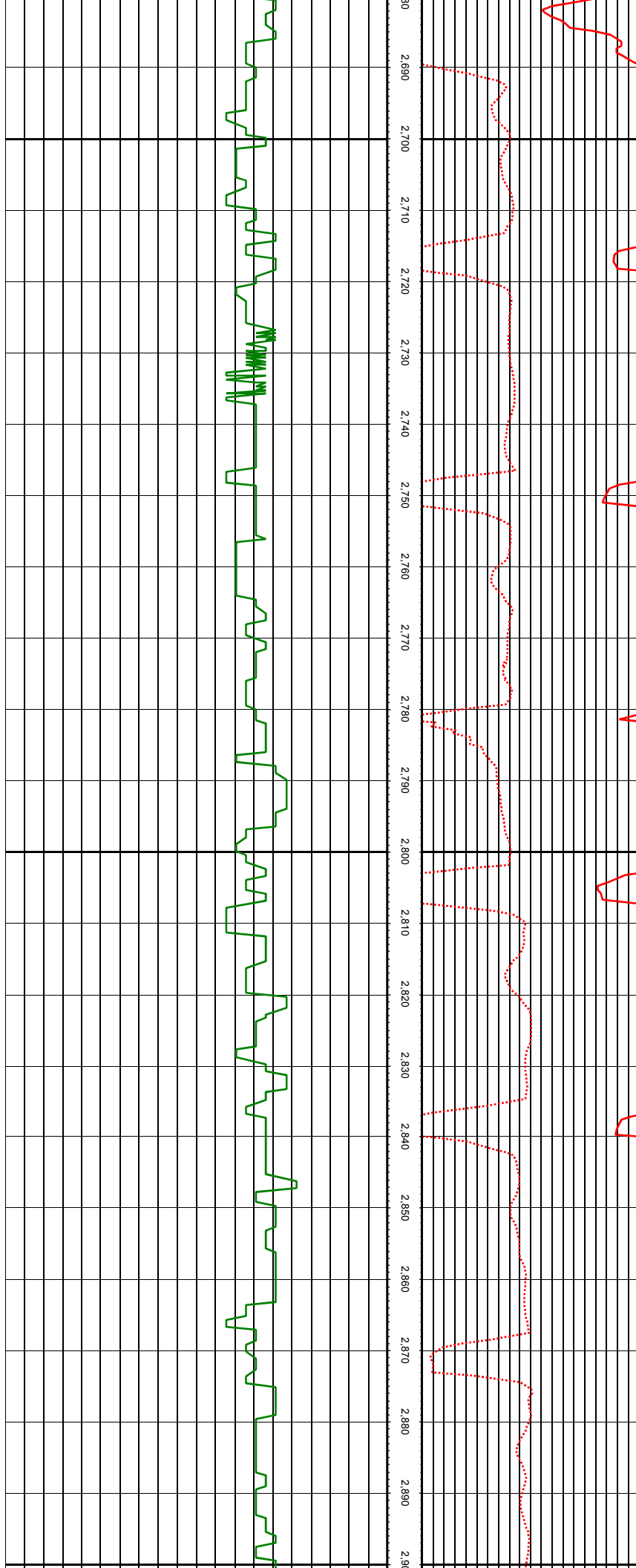
MD: 2407.00 INC: 5.32 AZ: 229.78

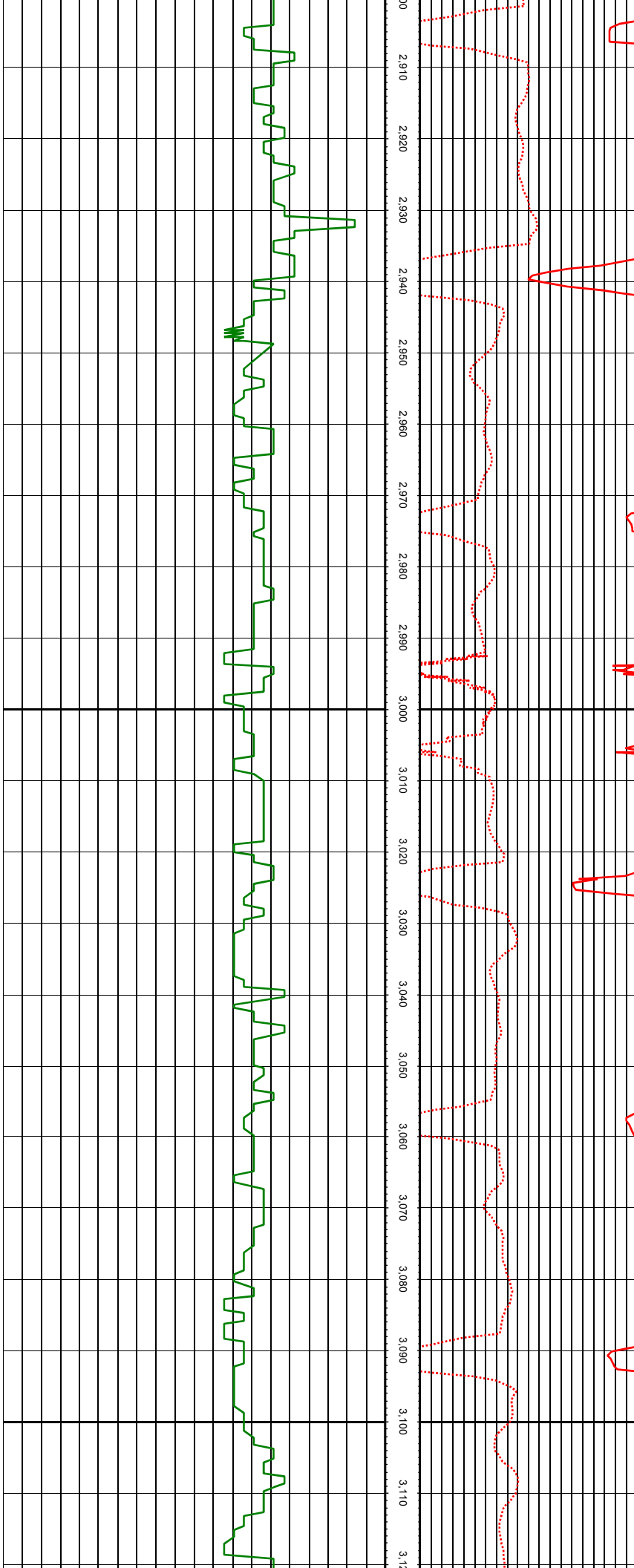


MD: 2690.00 INC: 5.45 AZ: 225.03

MD: 2785.00 INC: 5.49 AZ: 226.35

MD: 2880.00 INC: 5.45 AZ: 227.41





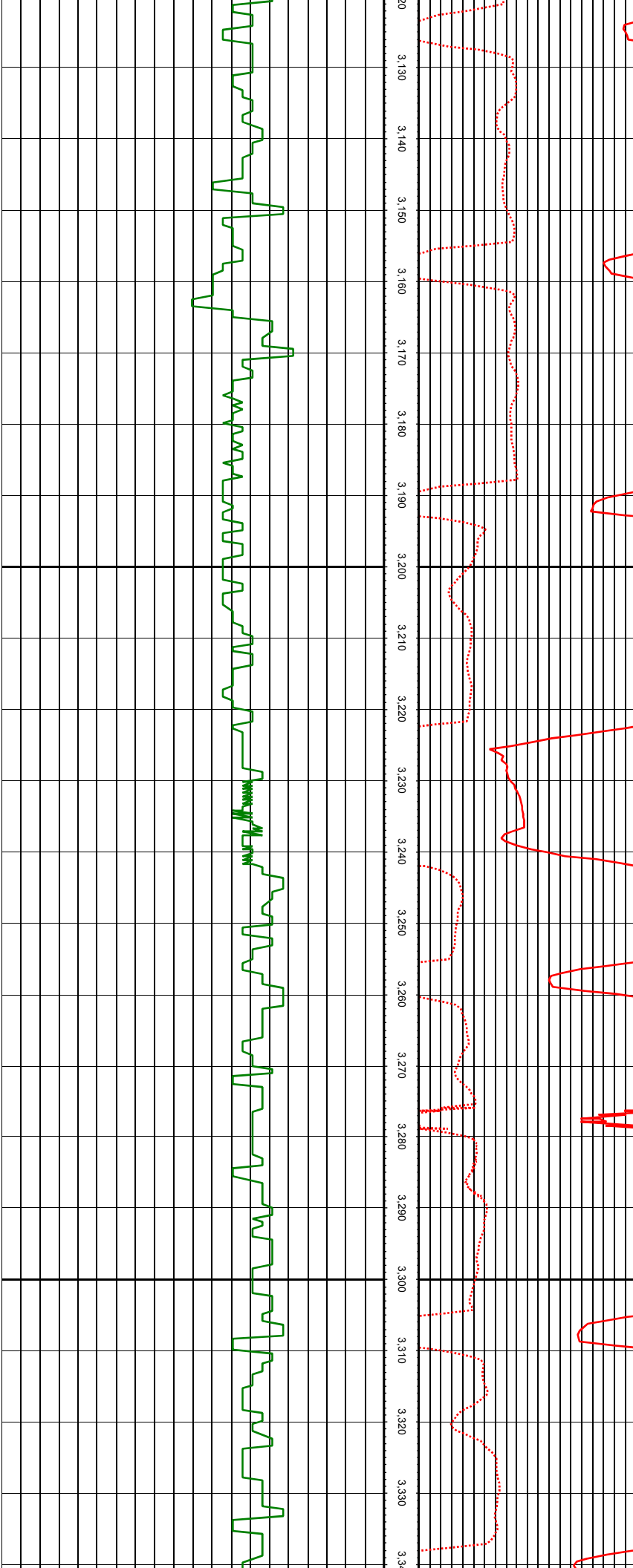
00
2,910
2,920
2,930
2,940
2,950
2,960
2,970
2,980
2,990
3,000
3,010
3,020
3,030
3,040
3,050
3,060
3,070
3,080
3,090
3,100
3,110
3,120

MD: 2975.00 INC: 5.01 AZ: 227.93

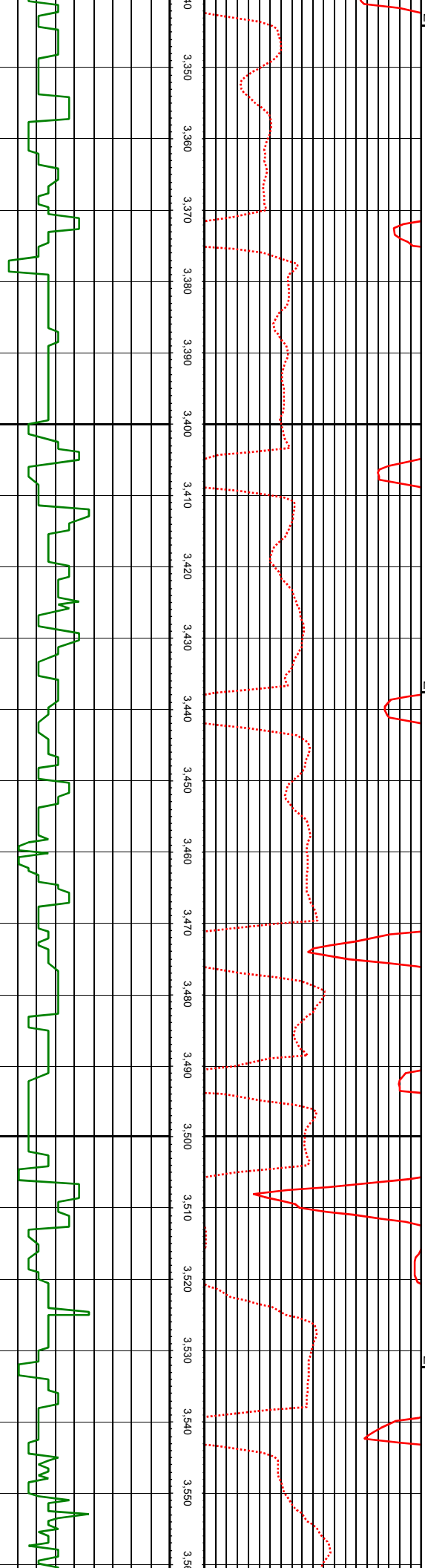
MD: 3069.00 INC: 4.84 AZ: 229.25

MD: 3164.00 INC: 4.57 AZ: 232.68

MD: 3259.00 INC: 5.71 AZ: 223.72



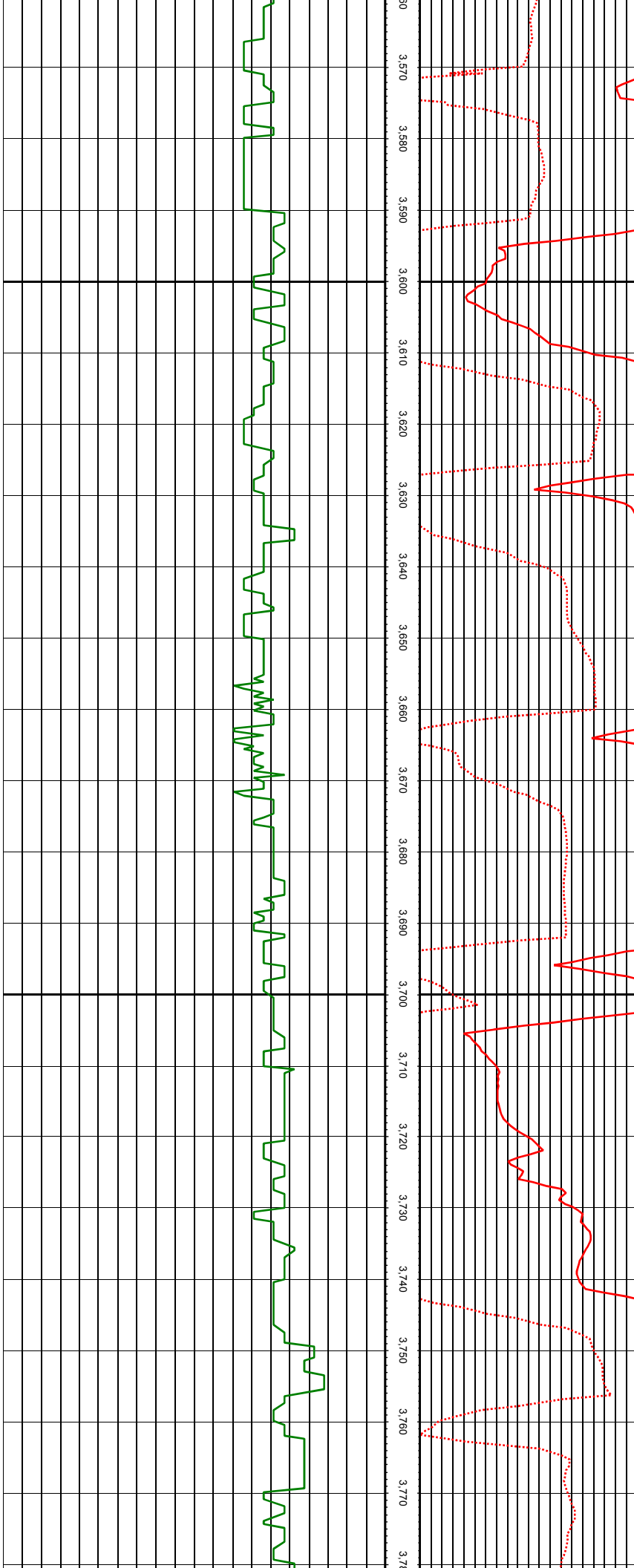
MD: 3354.00 INC: 5.49 AZ: 226.27



40
3,350
3,360
3,370
3,380
3,390
3,400
3,410
3,420
3,430
3,440
3,450
3,460
3,470
3,480
3,490
3,500
3,510
3,520
3,530
3,540
3,550
3,560

MD: 3448.00 INC: 4.92 AZ: 228.29

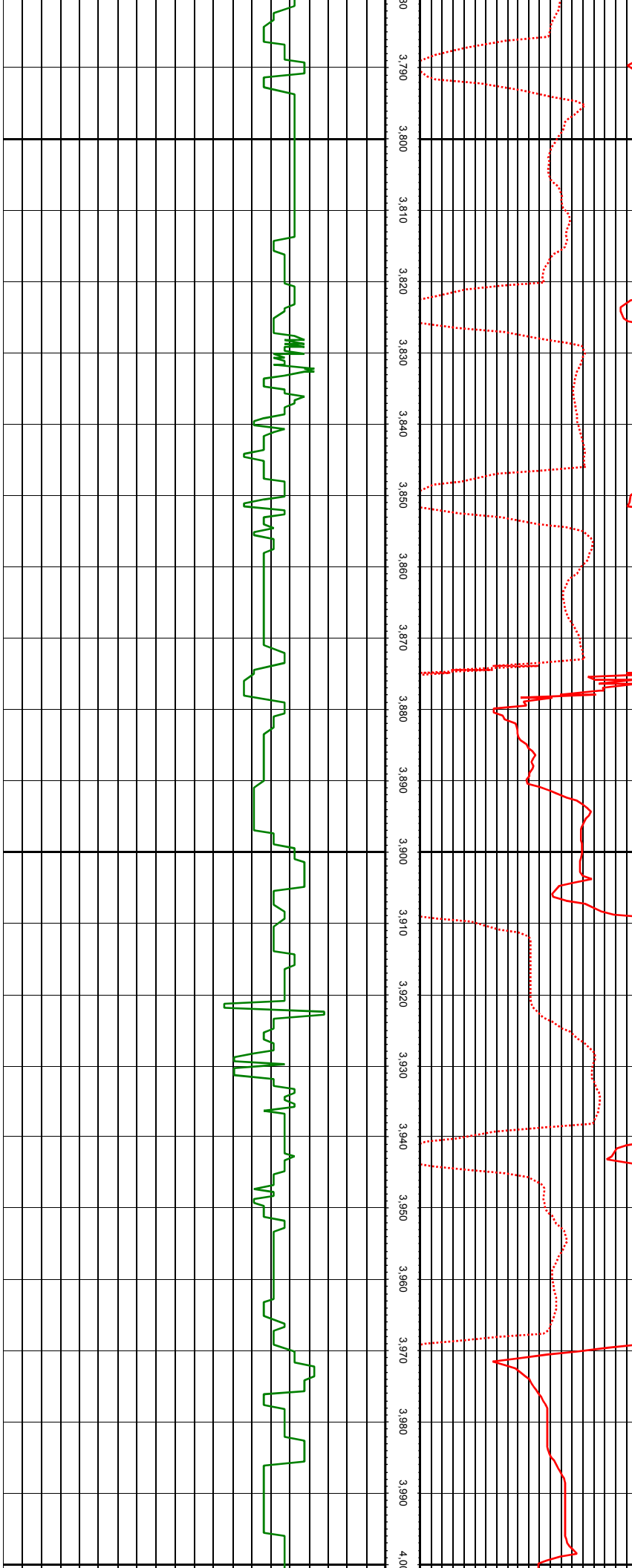
MD: 3543.00 INC: 4.22 AZ: 230.57



30
3.570
3.580
3.590
3.600
3.610
3.620
3.630
3.640
3.650
3.660
3.670
3.680
3.690
3.700
3.710
3.720
3.730
3.740
3.750
3.760
3.770
3.780

MD: 3638.00 INC: 3.82 AZ: 230.13

MD: 3733.00 INC: 4.70 AZ: 222.22

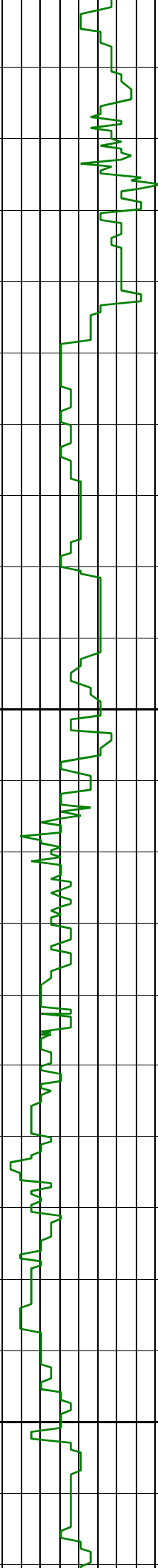


MD: 3828.00 INC: 4.22 AZ: 228.99

MD: 3922.00 INC: 4.57 AZ: 237.78

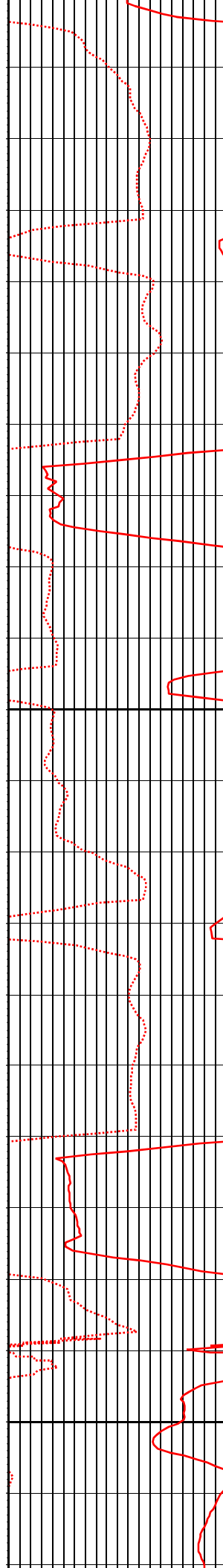
MD: 4017.00 INC: 6.51 AZ: 225.65

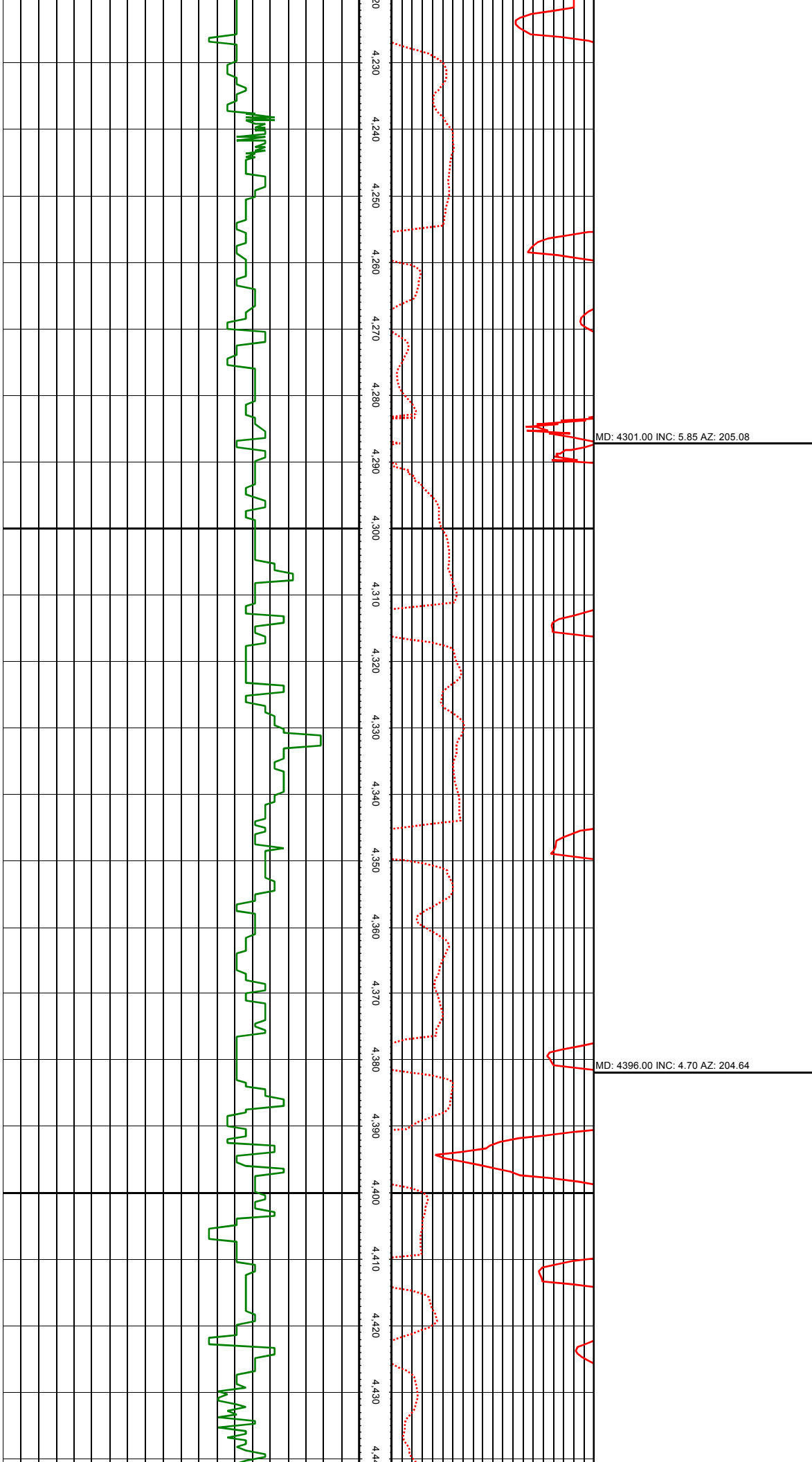
4.010 4.020 4.030 4.040 4.050 4.060 4.070 4.080 4.090 4.100 4.110 4.120 4.130 4.140 4.150 4.160 4.170 4.180 4.190 4.200 4.210 4.220



MD: 4112.00 INC: 5.93 AZ: 227.76

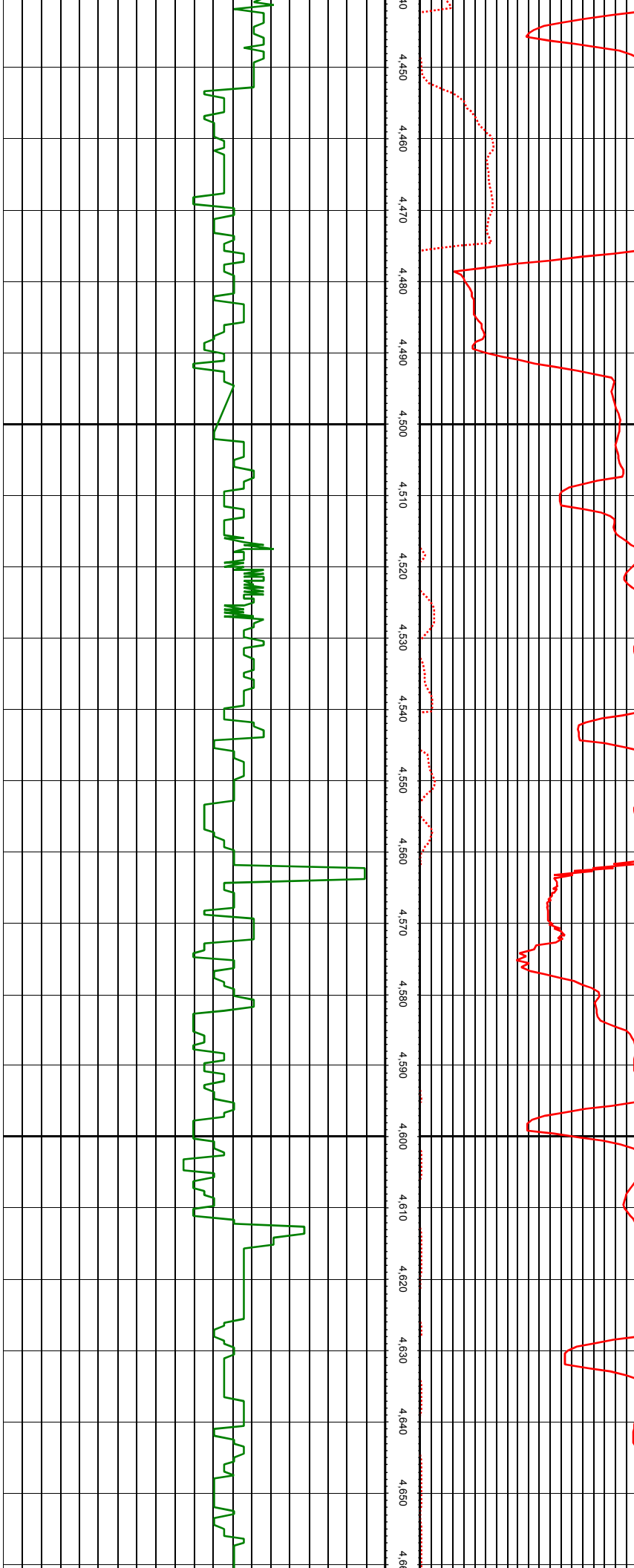
MD: 4207.00 INC: 6.37 AZ: 208.42





MD: 4301.00 INC: 5.85 AZ: 205.08

MD: 4396.00 INC: 4.70 AZ: 204.64



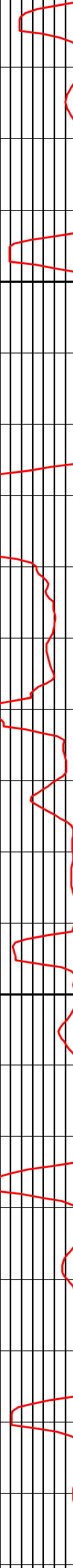
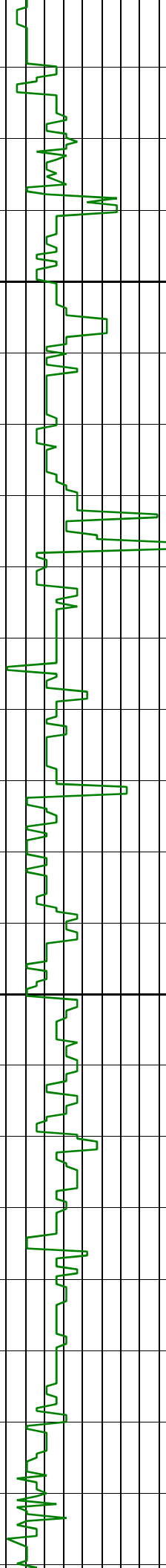
4,450
4,460
4,470
4,480
4,490
4,500
4,510
4,520
4,530
4,540
4,550
4,560
4,570
4,580
4,590
4,600
4,610
4,620
4,630
4,640
4,650
4,660

MD: 4491.00 INC: 4.57 AZ: 208.60

MD: 4586.00 INC: 5.23 AZ: 209.74

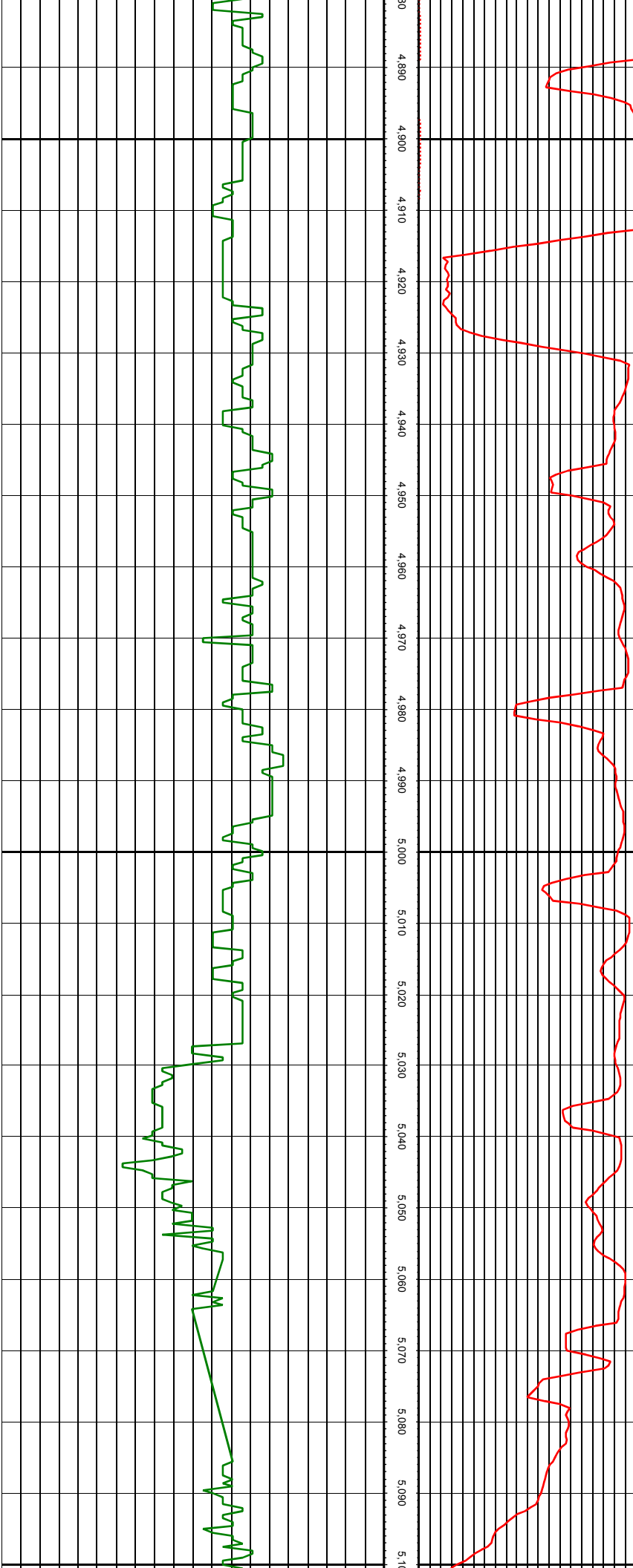
MD: 4680.00 INC: 5.27 AZ: 211.15

4670 4680 4690 4700 4710 4720 4730 4740 4750 4760 4770 4780 4790 4800 4810 4820 4830 4840 4850 4860 4870 4880



MD: 4775.00 INC: 5.63 AZ: 216.95

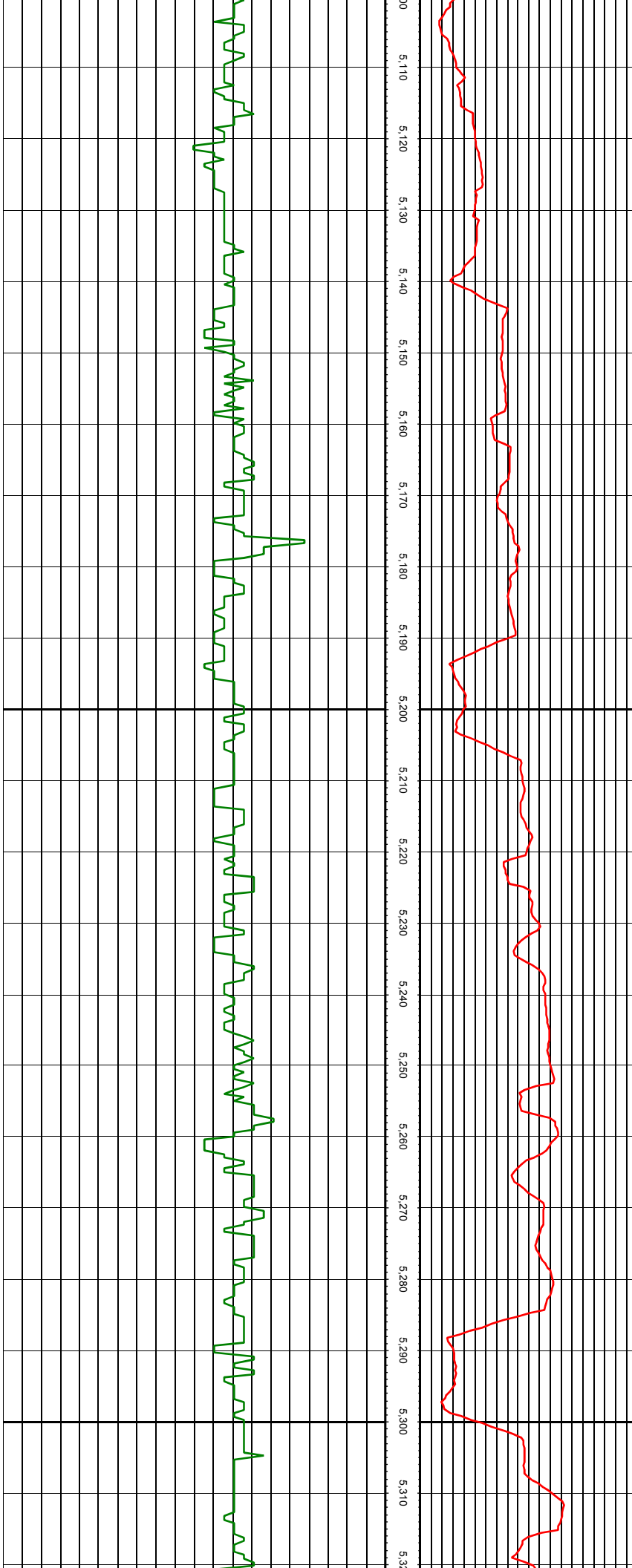
MD: 4869.00 INC: 5.23 AZ: 216.60



30
4,890
4,900
4,910
4,920
4,930
4,940
4,950
4,960
4,970
4,980
4,990
5,000
5,010
5,020
5,030
5,040
5,050
5,060
5,070
5,080
5,090
5,100

MD: 4964.00 INC: 5.36 AZ: 228.99

MD: 5059.00 INC: 5.05 AZ: 231.27

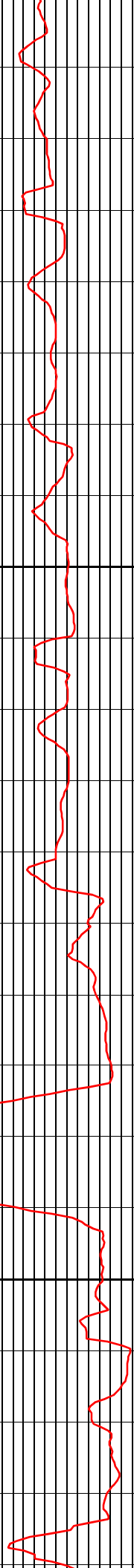
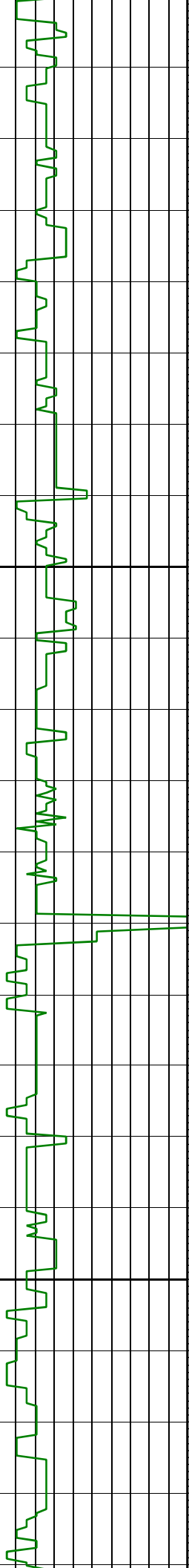


MD: 5155.00 INC: 4.70 AZ: 231.63

MD: 5249.00 INC: 4.97 AZ: 229.17

MD: 5344.00 INC: 5.49 AZ: 227.32

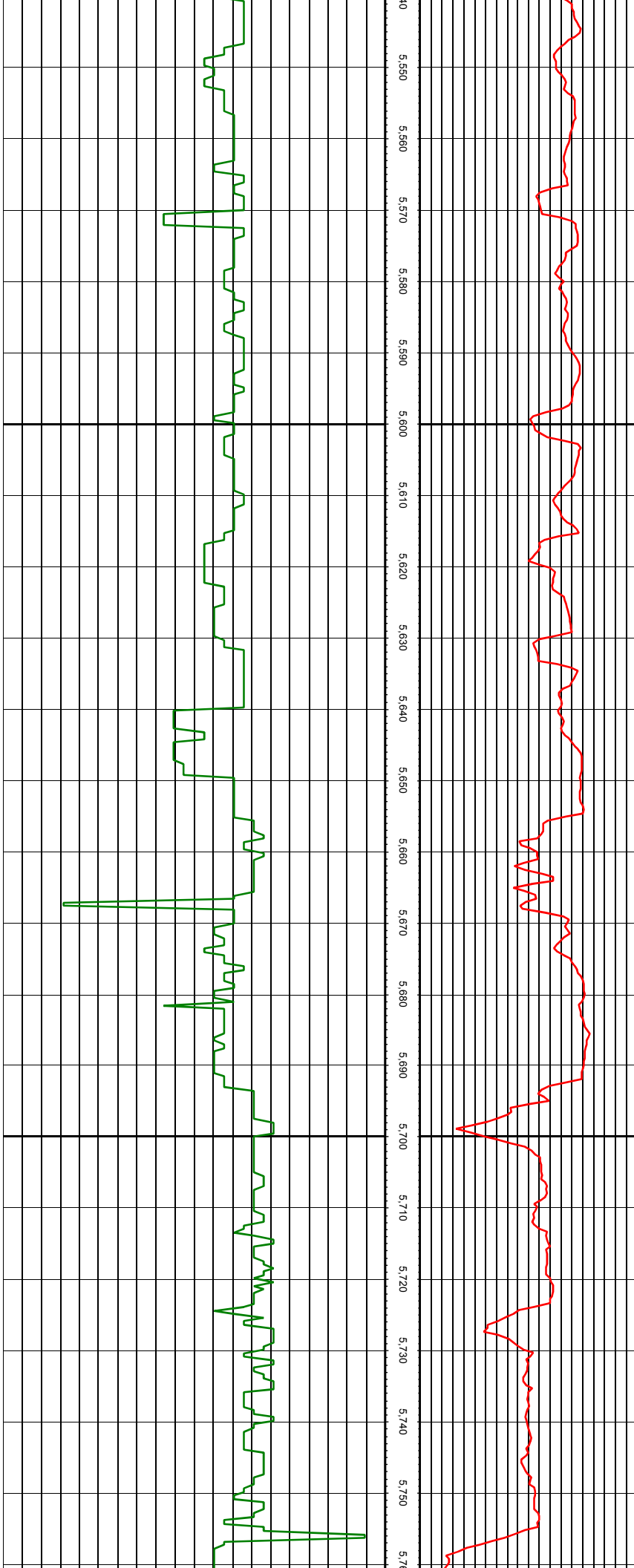
5.330 5.340 5.350 5.360 5.370 5.380 5.390 5.400 5.410 5.420 5.430 5.440 5.450 5.460 5.470 5.480 5.490 5.500 5.510 5.520 5.530 5.540



MD: 5439.00 INC: 4.92 AZ: 227.32

MD: 5534.00 INC: 6.07 AZ: 227.41

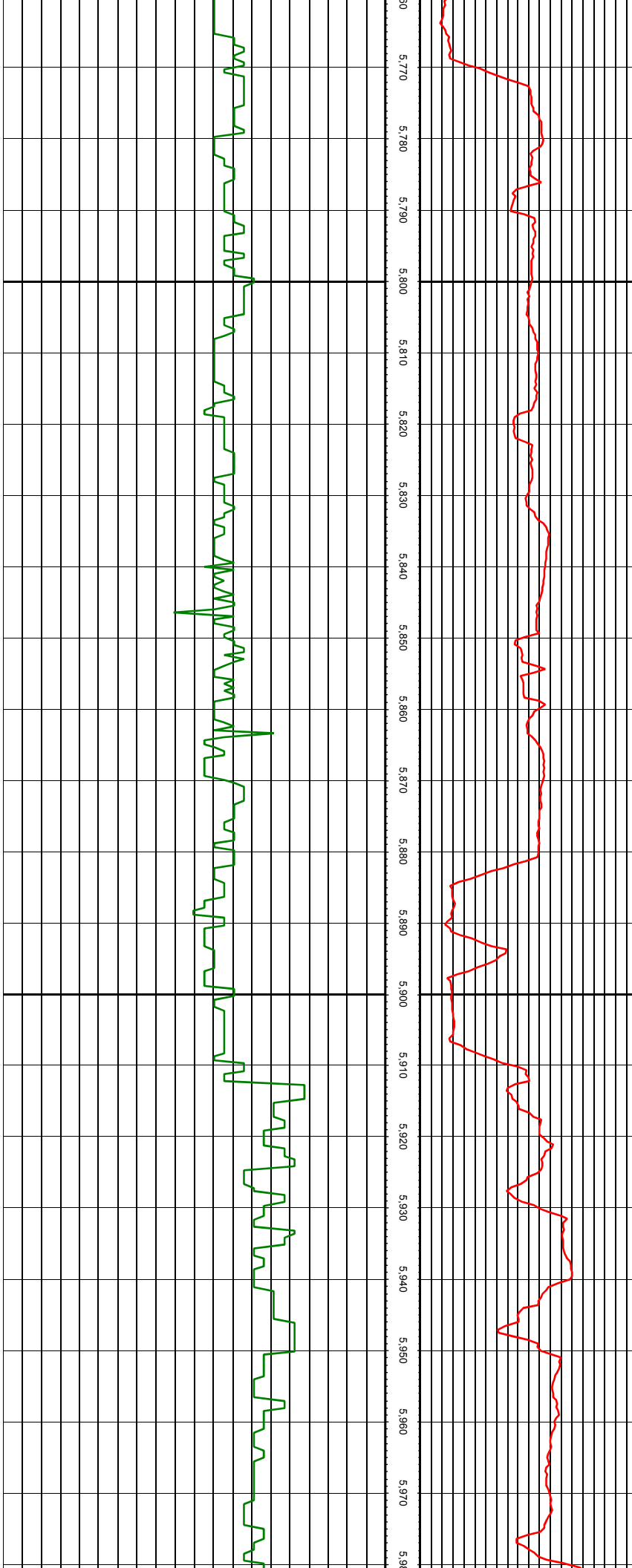
11



5.540 5.550 5.560 5.570 5.580 5.590 5.600 5.610 5.620 5.630 5.640 5.650 5.660 5.670 5.680 5.690 5.700 5.710 5.720 5.730 5.740 5.750 5.760

MD: 5628.00 INC: 5.45 AZ: 226.97

MD: 5723.00 INC: 4.79 AZ: 226.53



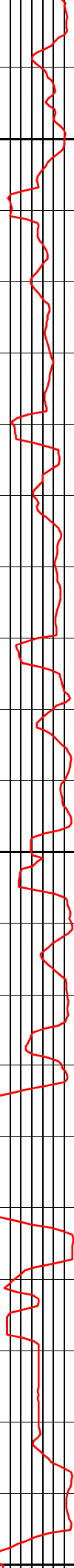
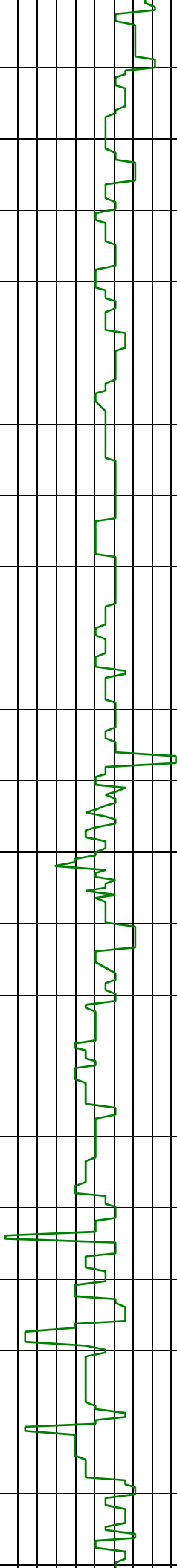
30
5.770
5.780
5.790
5.800
5.810
5.820
5.830
5.840
5.850
5.860
5.870
5.880
5.890
5.900
5.910
5.920
5.930
5.940
5.950
5.960
5.970
5.980
5.990

MD: 5817.00 INC: 4.79 AZ: 225.39

MD: 5912.00 INC: 4.92 AZ: 226.79

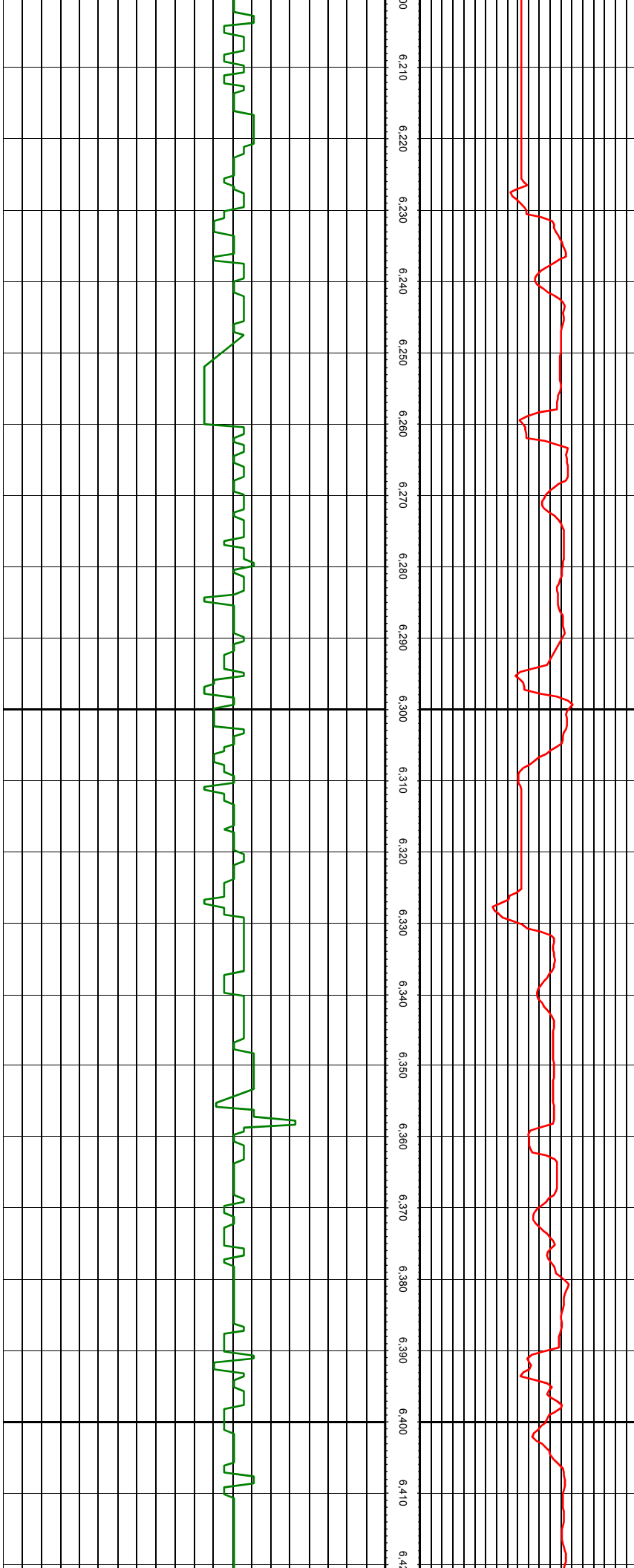
MD: 6007.00 INC: 5.23 AZ: 227.76

5.990 6.000 6.010 6.020 6.030 6.040 6.050 6.060 6.070 6.080 6.090 6.100 6.110 6.120 6.130 6.140 6.150 6.160 6.170 6.180 6.190 6.200



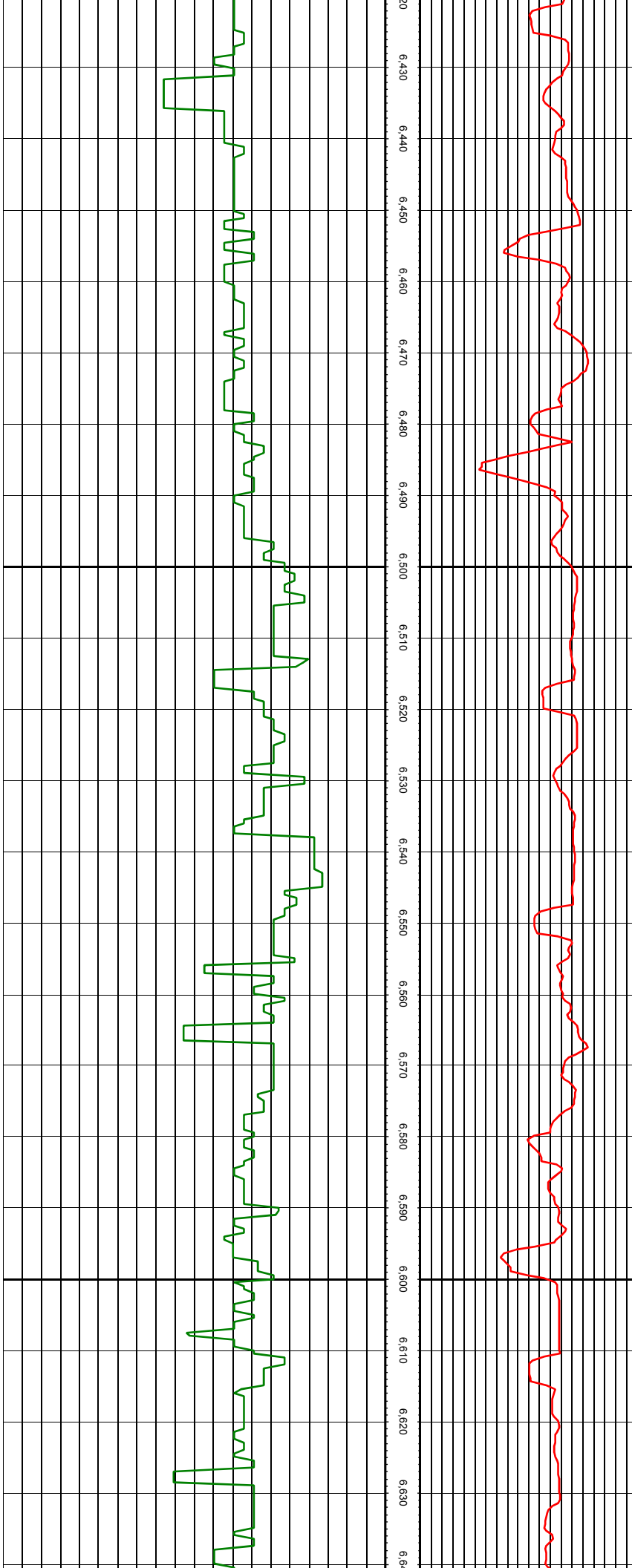
MD: 6102.00 INC: 4.44 AZ: 224.95

MD: 6197.00 INC: 5.05 AZ: 237.78



MD: 6291.00 INC: 4.40 AZ: 239.10

MD: 6386.00 INC: 3.60 AZ: 239.54



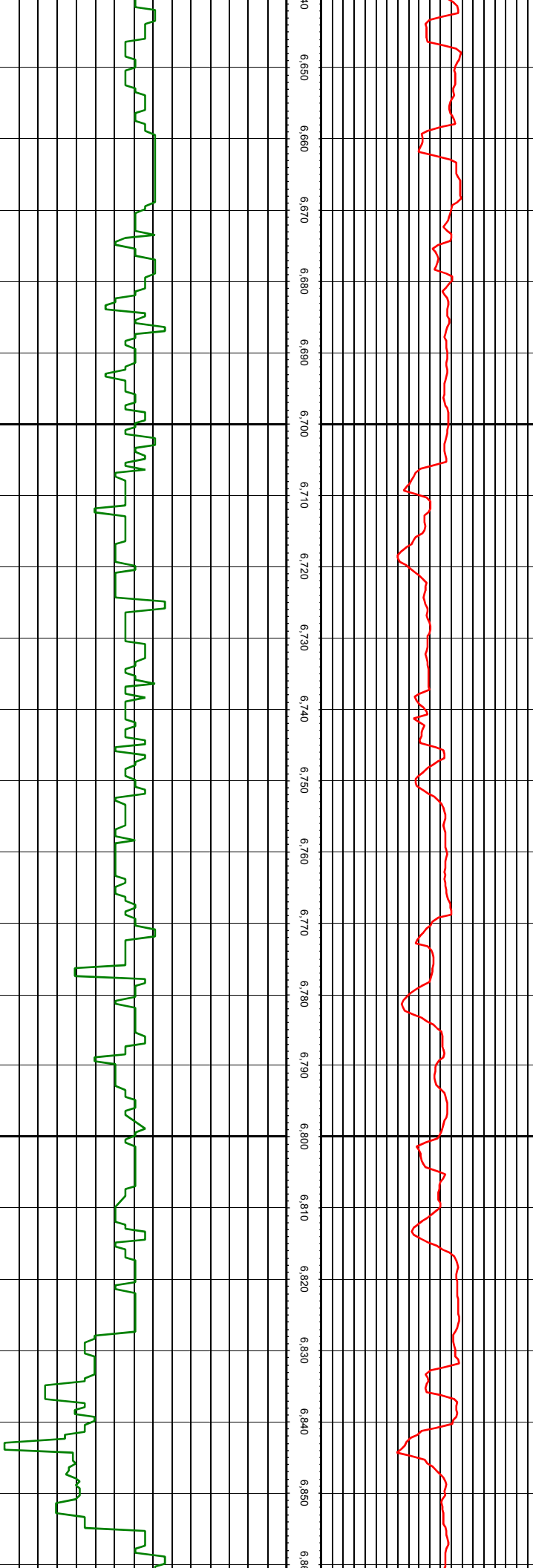
MD: 6481.00 INC: 2.81 AZ: 239.62

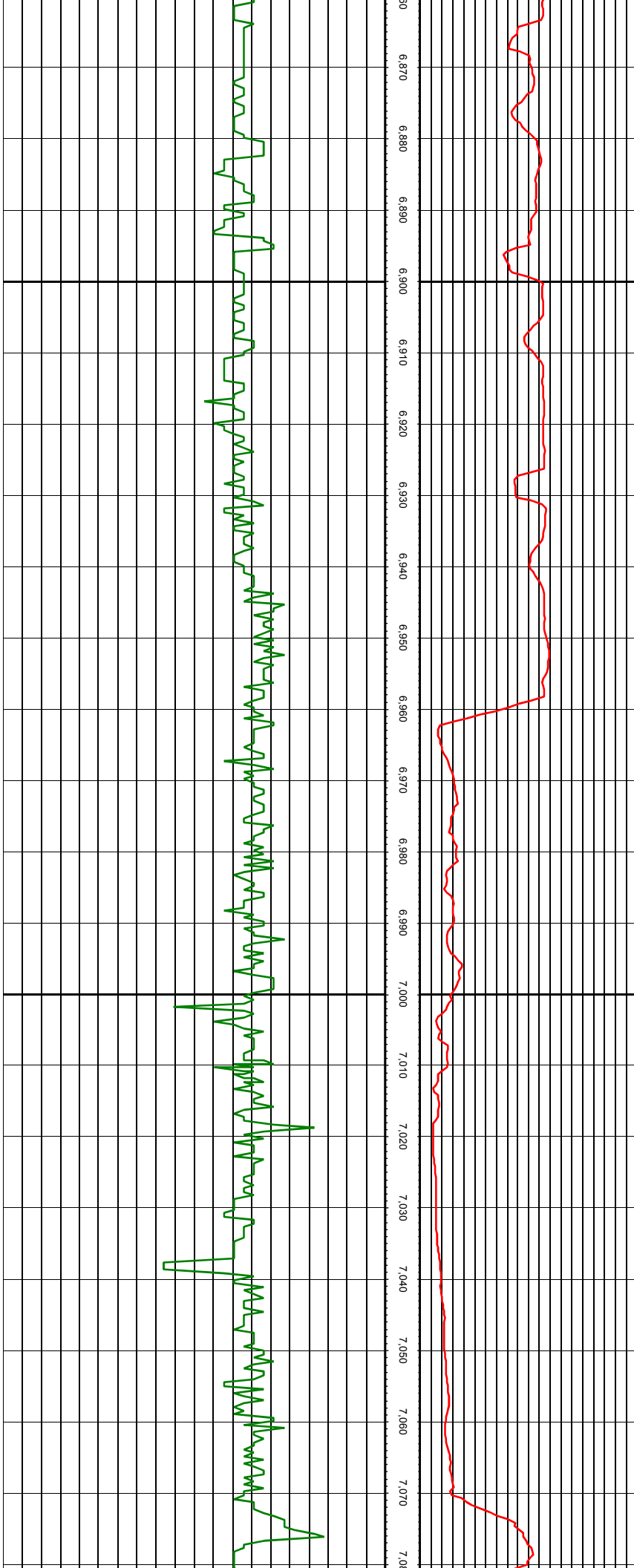
MD: 6576.00 INC: 2.29 AZ: 239.89

MD: 6670.00 INC: 1.63 AZ: 237.87

MD: 6765.00 INC: 1.36 AZ: 241.12

MD: 6860.00 INC: 0.92 AZ: 239.80



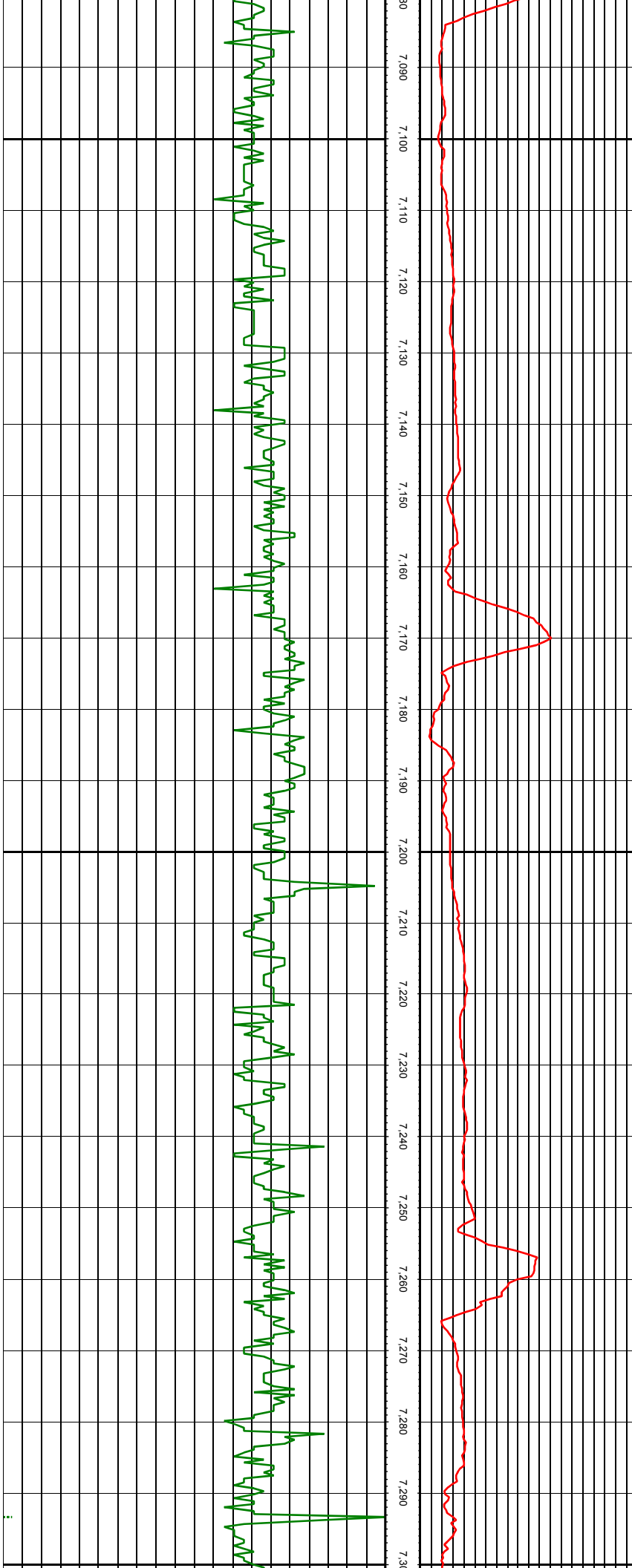


MD: 6954.00 INC: 0.79 AZ: 249.29

MD: 7001.00 INC: 2.24 AZ: 337.80

MD: 7049.00 INC: 5.58 AZ: 355.46

MD: 7096.00 INC: 10.15 AZ: 359.60



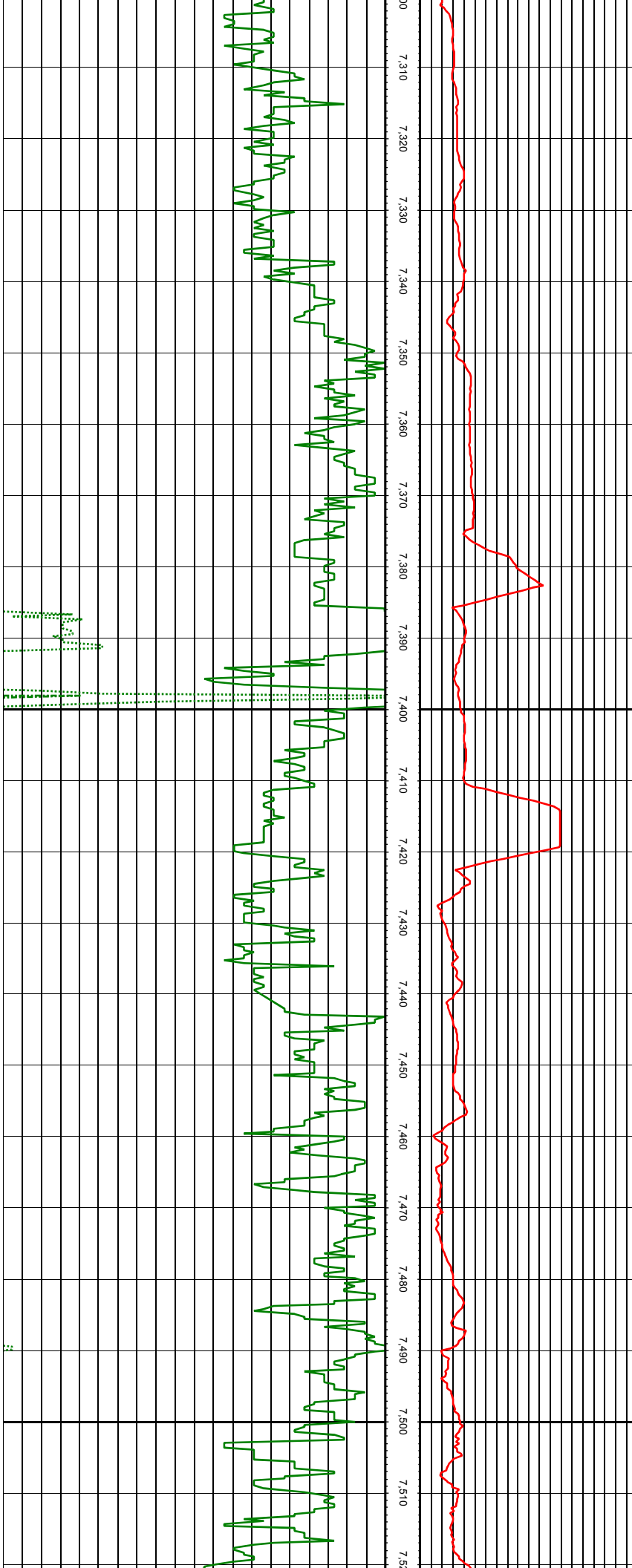
MD: 7144.00 INC: 14.02 AZ: 0.03

MD: 7191.00 INC: 17.23 AZ: 359.60

MD: 7238.00 INC: 20.40 AZ: 358.54

MD: 7285.00 INC: 24.44 AZ: 358.63

MD: 7333.00 INC: 27.56 AZ: 358.89



MD: 7380.00 INC: 32.22 AZ: 358.89

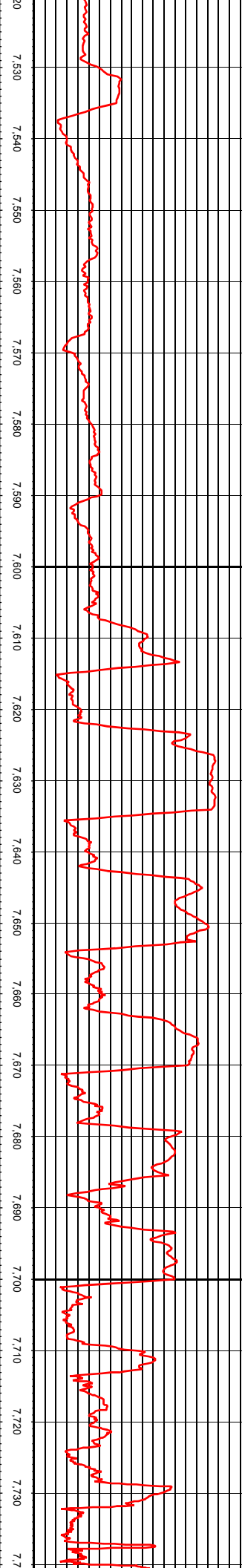
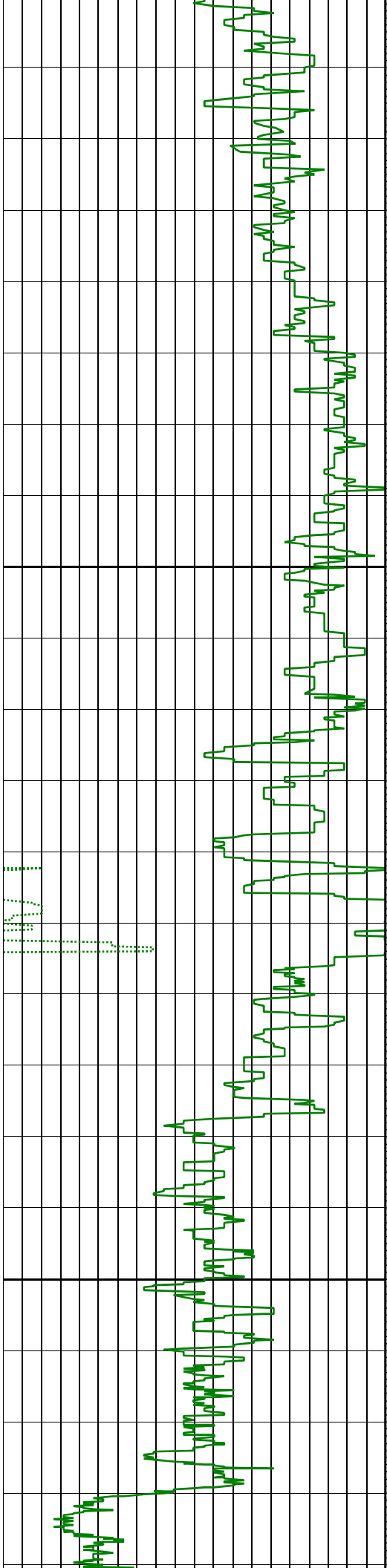
MD: 7428.00 INC: 35.47 AZ: 356.78

MD: 7475.00 INC: 39.12 AZ: 355.99

MD: 7501.00 INC: 39.87 AZ: 354.85

MD: 7548.00 INC: 43.65 AZ: 356.78

MD: 7596.00 INC: 46.42 AZ: 358.72



MD: 7643.00 INC: 49.54 AZ: 359.68

MD: 7690.00 INC: 53.67 AZ: 359.42

MD: 7737.00 INC: 59.78 AZ: 357.75

MD: 7785.00 INC: 63.78 AZ: 357.05

MD: 7832.00 INC: 65.54 AZ: 356.96

MD: 7880.00 INC: 67.34 AZ: 357.49

MD: 7927.00 INC: 70.02 AZ: 358.63

MD: 7975.00 INC: 71.60 AZ: 359.16

MD: 8022.00 INC: 72.66 AZ: 358.63

MD: 8069.00 INC: 75.74 AZ: 358.45

MD: 8116.00 INC: 77.71 AZ: 1.35

MD: 8164.00 INC: 81.36 AZ: 2.93

MD: 8211.00 INC: 84.22 AZ: 2.58

MD: 8258.00 INC: 87.60 AZ: 238.19

