

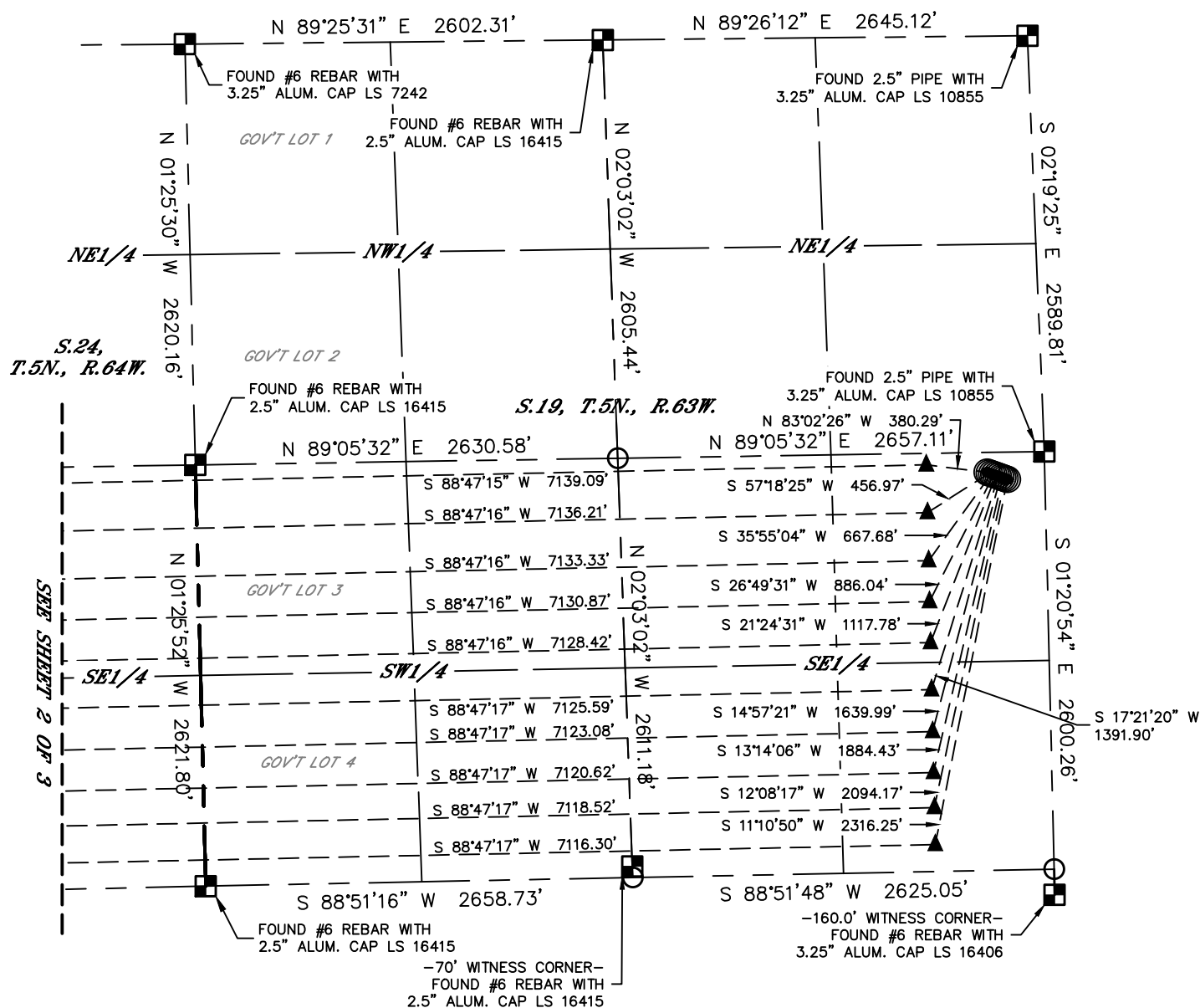
Lat40°, Inc. 6250 W. 10th Street, Unit 2, Greeley, CO 970-515-5294

MULTI-WELL PLAN








KLIPPERT 5N63W19 1-10 PAD

THIS MAP DOES NOT REPRESENT A BOUNDARY SURVEY

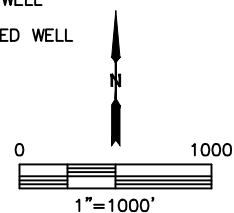
SECTION: 19
TOWNSHIP: 5N
RANGE: 63W
6TH. P.M.
WELD COUNTY, CO



LEGEND

-  = ALIQUOT MONUMENT AS DESCRIBED
 = CALCULATED POSITION
 = SURFACE HOLE LOCATION (SHL)
 = ENTRY POINT LOCATION (EP)
 = BOTTOM HOLE LOCATION (BHL)
 = EXISTING WELL
 = ABANDONED WELL

#	WELL NAME	BHL FOOTAGE			BHL LAT °	BHL LONG °	BHL S-T-R	
1	KLIPPERT 1C	2532	FSL	2589	FEL	40.38445	-104.49812	24-5-64
2	KLIPPERT 2N	2234	FSL	2586	FEL	40.38363	-104.49810	24-5-64
3	KLIPPERT 3N	1935	FSL	2584	FEL	40.38281	-104.49807	24-5-64
4	KLIPPERT 4N	1680	FSL	2582	FEL	40.38211	-104.49805	24-5-64
5	KLIPPERT 5N	1425	FSL	2580	FEL	40.38141	-104.49803	24-5-64
6	KLIPPERT 6C	1132	FSL	2577	FEL	40.38061	-104.49801	24-5-64
7	KLIPPERT 7N	871	FSL	2575	FEL	40.37989	-104.49799	24-5-64
8	KLIPPERT 8N	616	FSL	2573	FEL	40.37919	-104.49797	24-5-64
9	KLIPPERT 9N	398	FSL	2571	FEL	40.37859	-104.49795	24-5-64
10	KLIPPERT 10N	168	FSL	2569	FEL	40.37796	-104.49794	24-5-64





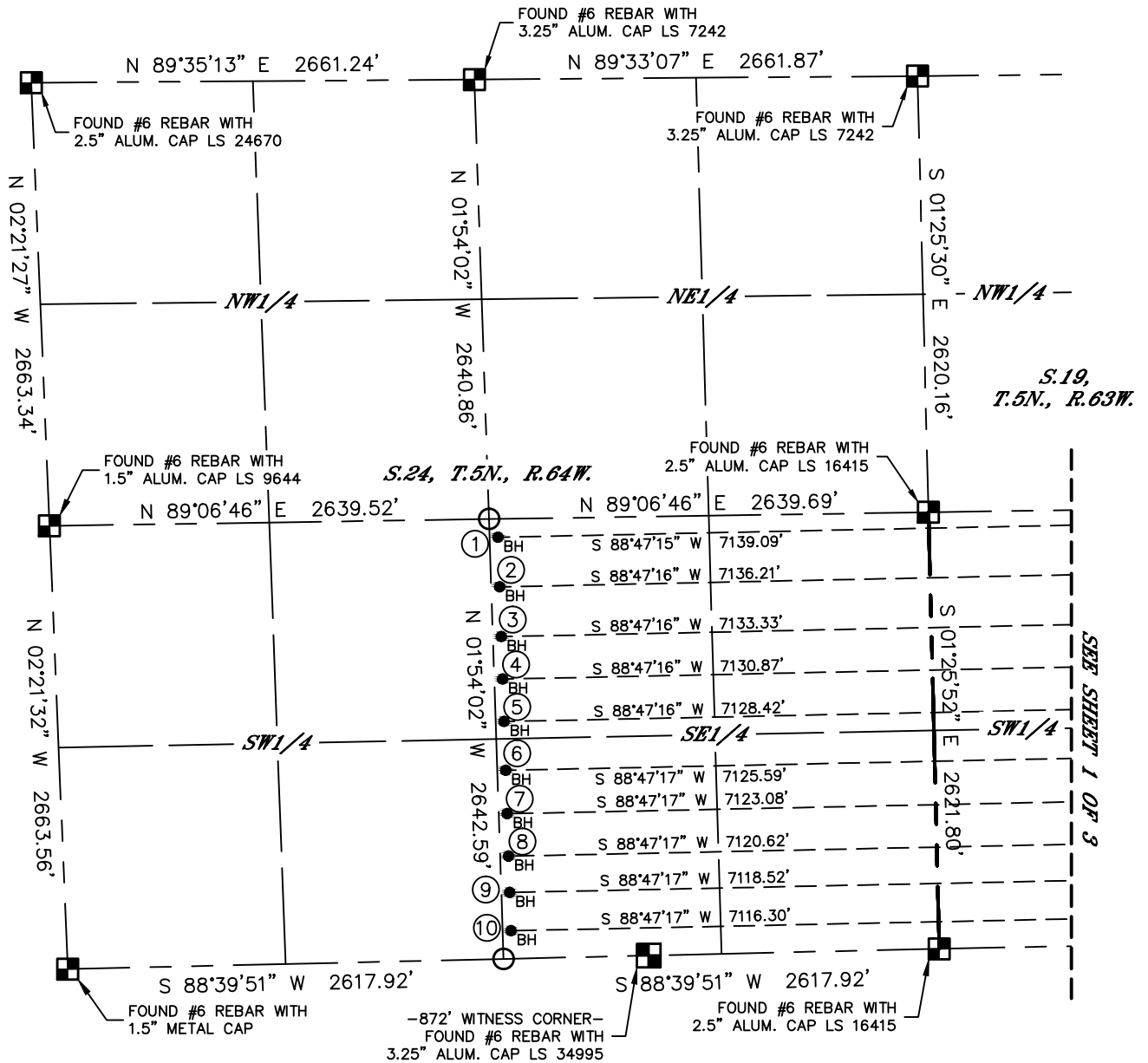
Lat40°, Inc. 6250 W. 10th Street, Unit 2, Greeley, CO 970-515-5294

MULTI-WELL PLAN

KLIPPERT 5N63W19 1-10 PAD

THIS MAP DOES NOT REPRESENT A BOUNDARY SURVEY

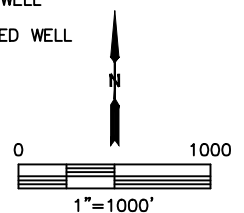
SECTION: 19
TOWNSHIP: 5N
RANGE: 63W
6TH. P.M.
WELD COUNTY, CO



LEGEND

- = ALIQUOT MONUMENT AS DESCRIBED
- = CALCULATED POSITION
- = SURFACE HOLE LOCATION (SHL)
- ▲ = ENTRY POINT LOCATION (EP)
- = BOTTOM HOLE LOCATION (BHL)
- ⊙ = EXISTING WELL
- ⊙ = ABANDONED WELL

#	WELL NAME	BHL FOOTAGE			BHL LAT °	BHL LONG °	BHL S-T-R	
1	KLIPPERT 1C	2532	FSL	2589	FEL	40.38445	-104.49812	24-5-64
2	KLIPPERT 2N	2234	FSL	2586	FEL	40.38363	-104.49810	24-5-64
3	KLIPPERT 3N	1935	FSL	2584	FEL	40.38281	-104.49807	24-5-64
4	KLIPPERT 4N	1680	FSL	2582	FEL	40.38211	-104.49805	24-5-64
5	KLIPPERT 5N	1425	FSL	2580	FEL	40.38141	-104.49803	24-5-64
6	KLIPPERT 6C	1132	FSL	2577	FEL	40.38061	-104.49801	24-5-64
7	KLIPPERT 7N	871	FSL	2575	FEL	40.37989	-104.49799	24-5-64
8	KLIPPERT 8N	616	FSL	2573	FEL	40.37919	-104.49797	24-5-64
9	KLIPPERT 9N	398	FSL	2571	FEL	40.37859	-104.49795	24-5-64
10	KLIPPERT 10N	168	FSL	2569	FEL	40.37796	-104.49794	24-5-64



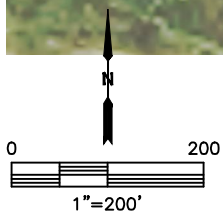
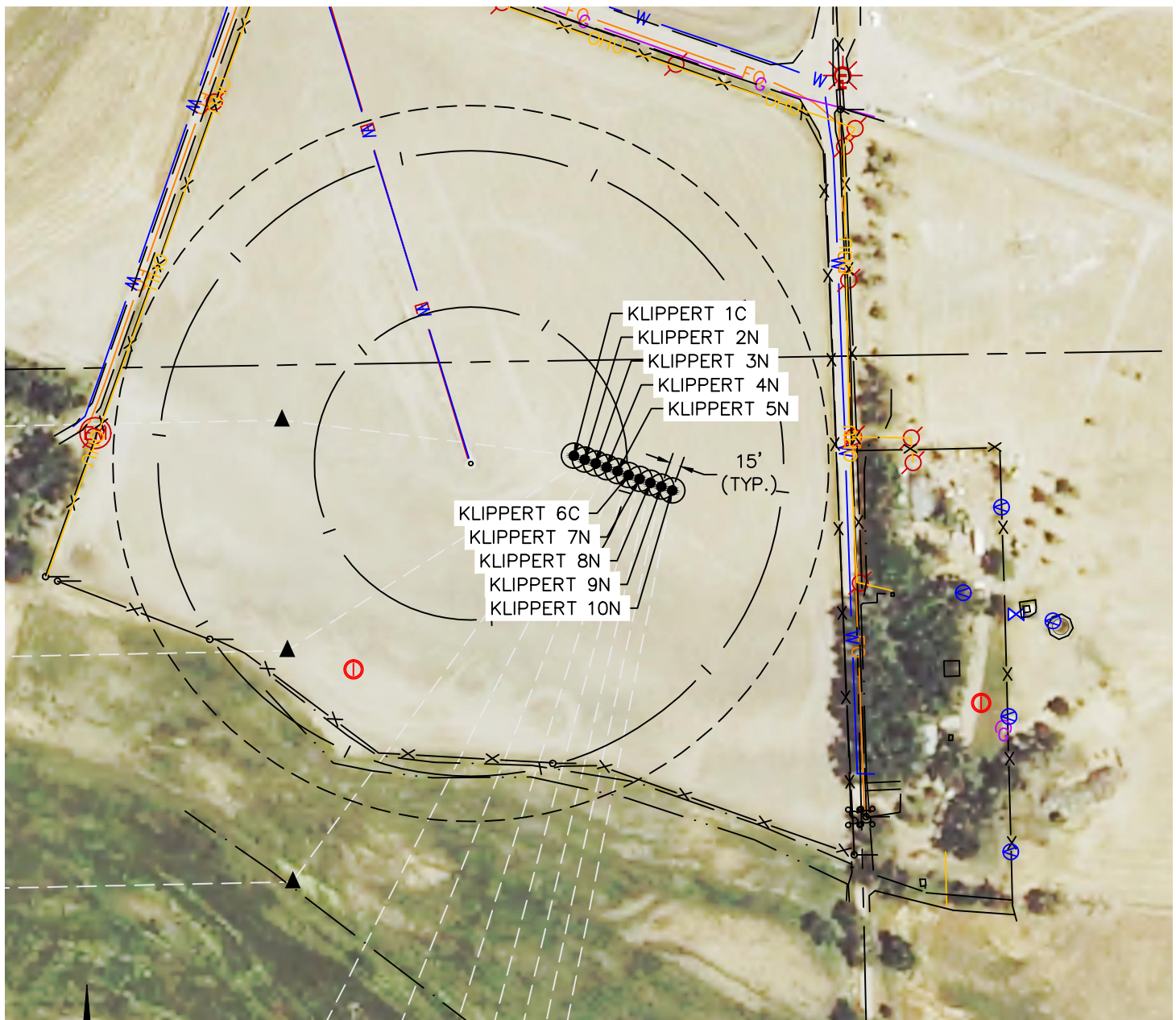


Lat40°, Inc. 6250 W. 10th Street, Unit 2, Greeley, CO 970-515-5294

MULTI-WELL PLAN

KLIPPERT 5N63W19 1-10 PAD

SECTION: 19
TOWNSHIP: 5N
RANGE: 63W
6TH. P.M.
WELD COUNTY, CO



#	WELL NAME	SHL FOOTAGE				SHL LAT °	SHL LONG °	SHL PDOP	SHL ELEV (FT.)	SHL 1/4/1/4	SHL S-T-R
1	KLIPPERT 1C	2478	FSL	361	FEL	40.38450	-104.47115	3.8	4559	NESE	19-5-63
2	KLIPPERT 2N	2473	FSL	347	FEL	40.38449	-104.47110	3.9	4559	NESE	19-5-63
3	KLIPPERT 3N	2468	FSL	333	FEL	40.38447	-104.47105	3.9	4559	NESE	19-5-63
4	KLIPPERT 4N	2463	FSL	319	FEL	40.38446	-104.47100	3.9	4559	NESE	19-5-63
5	KLIPPERT 5N	2457	FSL	305	FEL	40.38444	-104.47095	3.9	4559	NESE	19-5-63
6	KLIPPERT 6C	2452	FSL	291	FEL	40.38443	-104.47090	3.9	4559	NESE	19-5-63
7	KLIPPERT 7N	2447	FSL	277	FEL	40.38442	-104.47085	3.9	4559	NESE	19-5-63
8	KLIPPERT 8N	2441	FSL	263	FEL	40.38440	-104.47080	3.8	4559	NESE	19-5-63
9	KLIPPERT 9N	2436	FSL	249	FEL	40.38439	-104.47075	3.8	4559	NESE	19-5-63
10	KLIPPERT 10N	2431	FSL	235	FEL	40.38437	-104.47069	3.8	4559	NESE	19-5-63