



Lat40°, Inc. 6250 W. 10th Street, Unit 2, Greeley, CO 970-515-5294

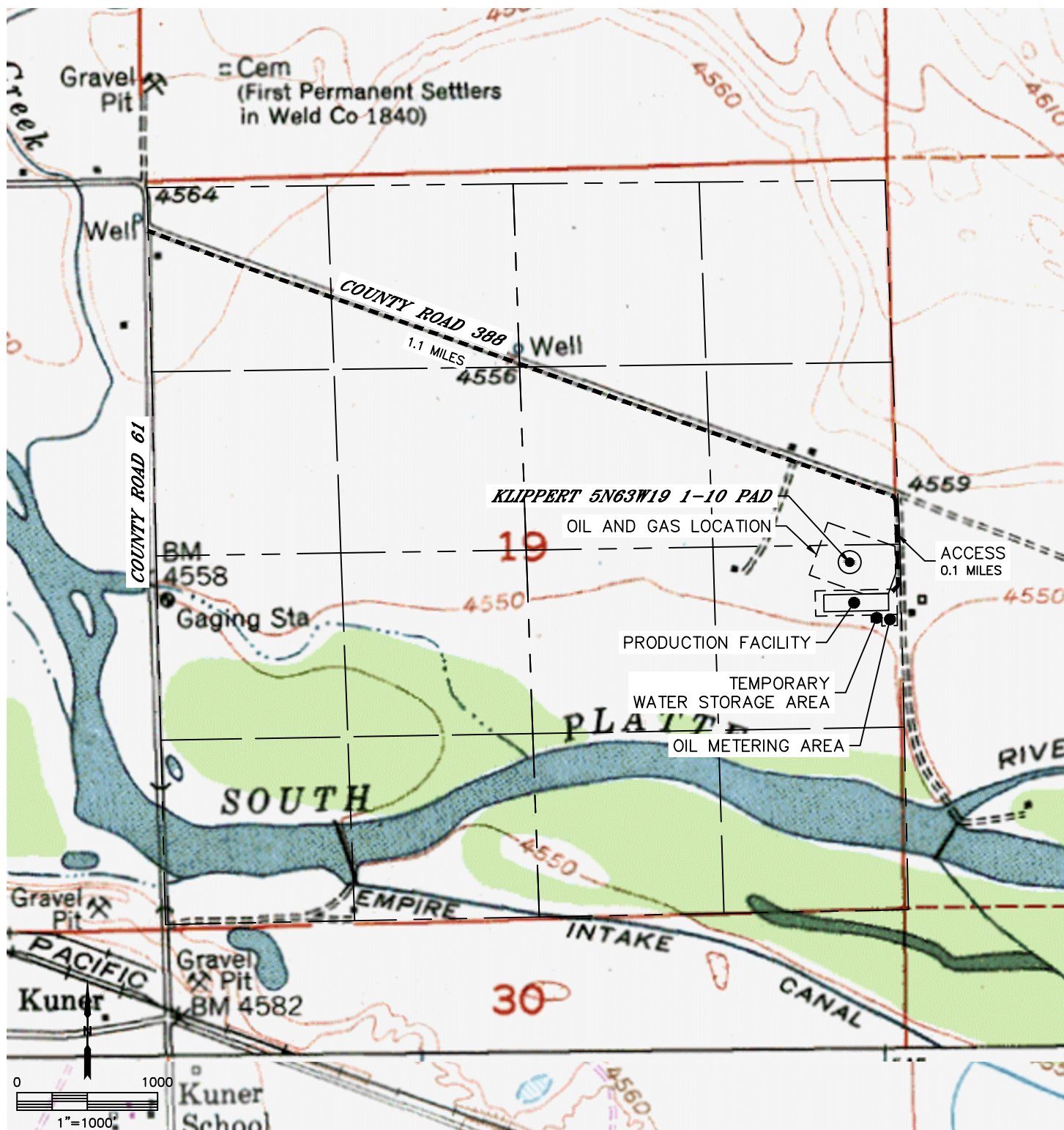
# ACCESS ROAD MAP

KLIPPERT 5N63W19 1-10 PAD

SECTION: 19  
TOWNSHIP: 5N  
RANGE: 63W  
6TH. P.M.  
WELD COUNTY, CO

## DRIVING DIRECTIONS TO KLIPPERT 5N63W19 1-10 PAD:

FROM THE INTERSECTION OF COUNTY ROAD 61 AND COUNTY ROAD 388 DRIVE SOUTHEAST ON COUNTY ROAD 388 FOR 1.1 MILES TO THE EXISTING ACCESS ROAD. TURN SOUTH AND DRIVE ON EXISTING ROAD FOR 0.1 MILES TO THE PROPOSED DRILL PAD AND PRODUCTION FACILITY LOCATION.







Lat40°, Inc. 6250 W. 10th Street, Unit 2, Greeley, CO 970-515-5294

# ACCESS ROAD MAP

KLIPPERT 5N63W19 1-10 PAD

SECTION: 19  
TOWNSHIP: 5N  
RANGE: 63W  
6TH. P.M.  
WELD COUNTY, CO

