

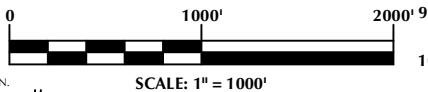
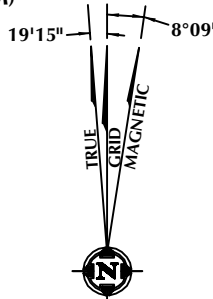
**SURFACE LOCATION: NAD 83**  
 GROUND ELEVATION= 4895.0'  
 LATITUDE= 40.176576°  
 LONGITUDE= -105.003503°  
 LATITUDE= 40°10'35.674"  
 LONGITUDE= -105°00'12.611"  
**HEEL LOCATION: NAD 83**  
 LATITUDE= 40.174816°  
 LONGITUDE= -105.004048°  
 LATITUDE= 40°10'29.339"  
 LONGITUDE= -105°00'14.572"  
**BOTTOM HOLE LOCATION: NAD 83**  
 LATITUDE= 40.158284°  
 LONGITUDE= -105.004512°  
 LATITUDE= 40°09'29.822"  
 LONGITUDE= -105°00'16.243"

**CERTIFICATE OF SURVEYOR:**

THIS IS TO CERTIFY THAT THE ABOVE PLAT WAS PREPARED FROM FIELD NOTES OF ACTUAL MEASUREMENTS MADE BY ME OR UNDER MY SUPERVISION AND THAT THEY ARE TRUE AND CORRECT TO THE BEST OF MY KNOWLEDGE AND BELIEF. THIS CERTIFICATE DOES NOT REPRESENT A LAND SURVEY PLAT OR IMPROVEMENT SURVEY PLAT AS DEFINED BY C.R.S. 38-51-302 AND CANNOT BE RELIED UPON TO DETERMINE OWNERSHIP.

*Randall K. French*  
**RANDALL K. FRENCH**  
 PROFESSIONAL LAND SURVEYOR  
 COLORADO REGISTRATION NUMBER 18512

**NOTE:**  
 MAGNETIC NORTH IS CURRENT AS OF 1/7/2016.  
 MAGNETIC NORTH CHANGES WEST 0°06' PER YEAR.



**NOTES:**

- ▲ INDICATES SECTION CORNER
- INDICATES CALCULATED CORNER
- ELEVATION BASED ON NAVD88 (GEOID12B)
- BASIS OF BEARING DERIVED FROM COLORADO COORDINATE SYSTEM OF 1983 NORTH ZONE.
- ALL MEASURED DISTANCES ARE GRID.  
COMBINED SCALE FACTOR: .99972556 CALCULATED FROM THE W. 1/4 CORNER OF SECTION 4, T2N, R68W  
OPERATOR: ROB WILSON / PDOP = 1.3
- SEE ADDENDUM TO WELL LOCATION CERTIFICATE FOR EXISTING IMPROVEMENTS WITHIN 500' OF THE WELL PAD.
- WELL FOOTAGES ARE MEASURED AT RIGHT ANGLES TO THE SECTION LINES.  
THE BOTTOM OF HOLE BEARS S00°54'51"W, 6024' FROM THE HEEL LOCATION.
- NO. 1 & NO. 2 AS SHOWN HEREON ARE GOVERNMENT LOTS 1 & 2 PER THE ORIGINAL GLO SURVEY

**WELL PAD - NEWBY 27N-33Z**

NEWBY STATE 15N-4HZ  
 WELL LOCATION CERTIFICATE  
 589' FSL & 1440' FEL SWSE (SURFACE)  
 LOCATED IN SECTION 33  
 T3N, R68W, 6TH P.M.  
 51' FNL & 1592' FEL LOT 2 (NWNE) (HEEL)  
 LOCATED IN SECTION 4  
 830' FNL & 1661' FEL NWNE (BOTTOM)  
 LOCATED IN SECTION 9  
 T2N, R68W, 6TH P.M.  
 WELD COUNTY, COLORADO

**Kerr-McGee Oil &  
 Gas Onshore L.P.**  
 1099 18th Street  
 Denver, Colorado 80202



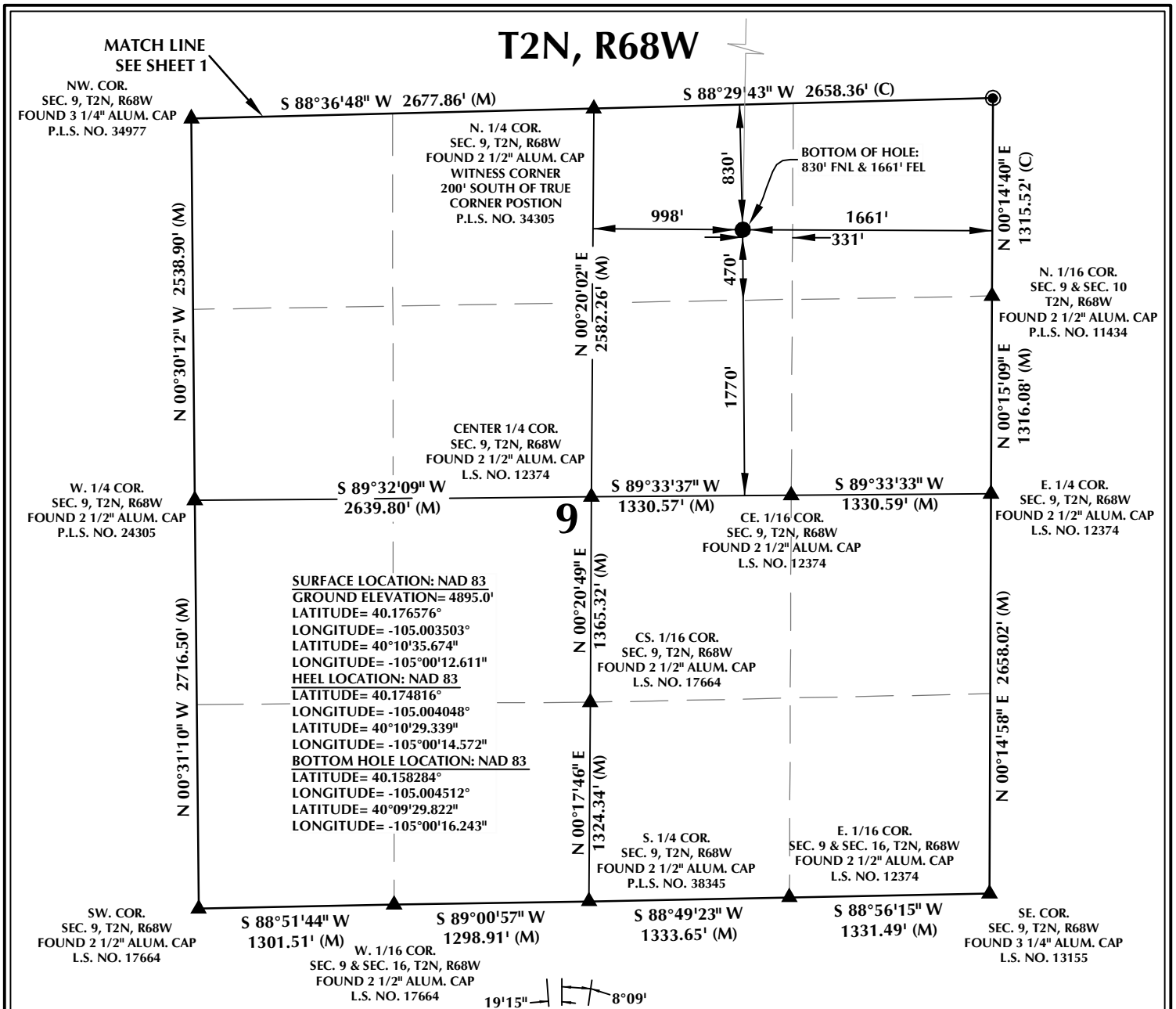
**CONSULTING, LLC**

**SHERIDAN OFFICE**  
 1095 Saberton Avenue  
 Sheridan, Wyoming 82801  
 Phone 307-674-0609

**LOVELAND OFFICE**  
 1635 Foxtrail Drive, Suite 204  
 Loveland, Colorado 80538  
 Phone 970-776-4331

DRAFTED BY: LMO	CHECKED BY: RKF	SHEET NO: <b>1</b> 1 OF 2
DATE DRAFTED: 1/21/16	DATE SURVEYED: 1/7/16	
REVISED: 5/10/17	FILE NAME: 15-65	

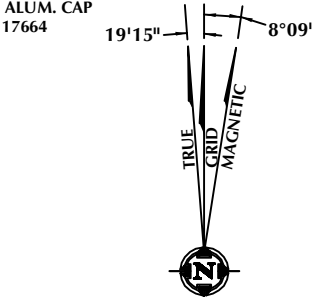
# T2N, R68W



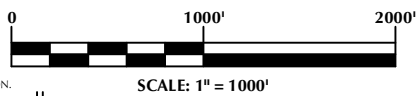
### CERTIFICATE OF SURVEYOR:

THIS IS TO CERTIFY THAT THE ABOVE PLAT WAS PREPARED FROM FIELD NOTES OF ACTUAL SURVEYS MADE BY ME OR UNDER MY SUPERVISION AND THAT THE SAME ARE TRUE AND CORRECT TO THE BEST OF MY KNOWLEDGE AND BELIEF. THIS CERTIFICATE DOES NOT REPRESENT A LAND SURVEY PLAT OR IMPROVEMENT SURVEY PLAT AS DEFINED BY C.R.S. 38-51-302 AND CANNOT BE RELIED UPON TO DETERMINE OWNERSHIP.

*Randall K. French*  
**RANDALL K. FRENCH**  
 PROFESSIONAL LAND SURVEYOR  
 COLORADO REGISTRATION NUMBER 18512



NOTE: MAGNETIC NORTH IS CURRENT AS OF 1/7/2016. MAGNETIC NORTH CHANGES WEST 0'06" PER YEAR.



### NOTES:

- ▲ INDICATES SECTION CORNER
- INDICATES CALCULATED CORNER
- ELEVATION BASED ON NAVD88 (GEOID12B)
- BASIS OF BEARING DERIVED FROM COLORADO COORDINATE SYSTEM OF 1983 NORTH ZONE.
- ALL MEASURED DISTANCES ARE GRID.  
COMBINED SCALE FACTOR: .99972556 CALCULATED FROM THE W. 1/4 CORNER OF SECTION 4, T2N, R68W  
OPERATOR: ROB WILSON / PDOP = 1.3
- SEE ADDENDUM TO WELL LOCATION CERTIFICATE FOR EXISTING IMPROVEMENTS WITHIN 500' OF THE WELL PAD.
- WELL FOOTAGES ARE MEASURED AT RIGHT ANGLES TO THE SECTION LINES.
- THE BOTTOM OF HOLE BEARS S00°54'51"W, 6024' FROM THE HEEL LOCATION.

### WELL PAD - NEWBY 27N-33HZ

NEWBY STATE 15N-4HZ  
 WELL LOCATION CERTIFICATE  
 589' FSL & 1440' FEL SWSE (SURFACE)  
 LOCATED IN SECTION 33  
 T3N, R68W, 6TH P.M.  
 51' FNL & 1592' FEL LOT 2 (NWNE) (HEEL)  
 LOCATED IN SECTION 4  
 830' FNL & 1661' FEL NWNE (BOTTOM)  
 LOCATED IN SECTION 9  
 T2N, R68W, 6TH P.M.  
 WELD COUNTY, COLORADO

**Kerr-McGee Oil & Gas Onshore L.P.**  
 1099 18th Street  
 Denver, Colorado 80202



### CONSULTING, LLC

**SHERIDAN OFFICE**  
 1095 Saberton Avenue  
 Sheridan, Wyoming 82801  
 Phone 307-674-0609

**LOVELAND OFFICE**  
 1635 Foxtrail Drive, Suite 204  
 Loveland, Colorado 80538  
 Phone 970-776-4331

DRAFTED BY: LMO	CHECKED BY: RKF	SHEET NO: <b>2</b> 2 OF 2
DATE DRAFTED: 1/21/16	DATE SURVEYED: 1/7/16	
REVISED: 5/10/17	FILE NAME: 15-65	