**WELL PAD - NEWBY 27N-33HZ**

NEWBY STATE 36N-4HZ  
WELL LOCATION CERTIFICATE  
589' FSL & 1485' FEL SWSE (SURFACE)  
LOCATED IN SECTION 33  
T3N, R68W, 6TH P.M.  
74' FNL & 1932' FEL LOT 2 (NWNE) (HEEL)  
LOCATED IN SECTION 4  
824' FNL & 2091' FEL NWNE (BOTTOM)  
LOCATED IN SECTION 9  
T2N, R68W, 6TH P.M.  
WELD COUNTY, COLORADO

**Kerr-McGee Oil &  
Gas Onshore L.P.**

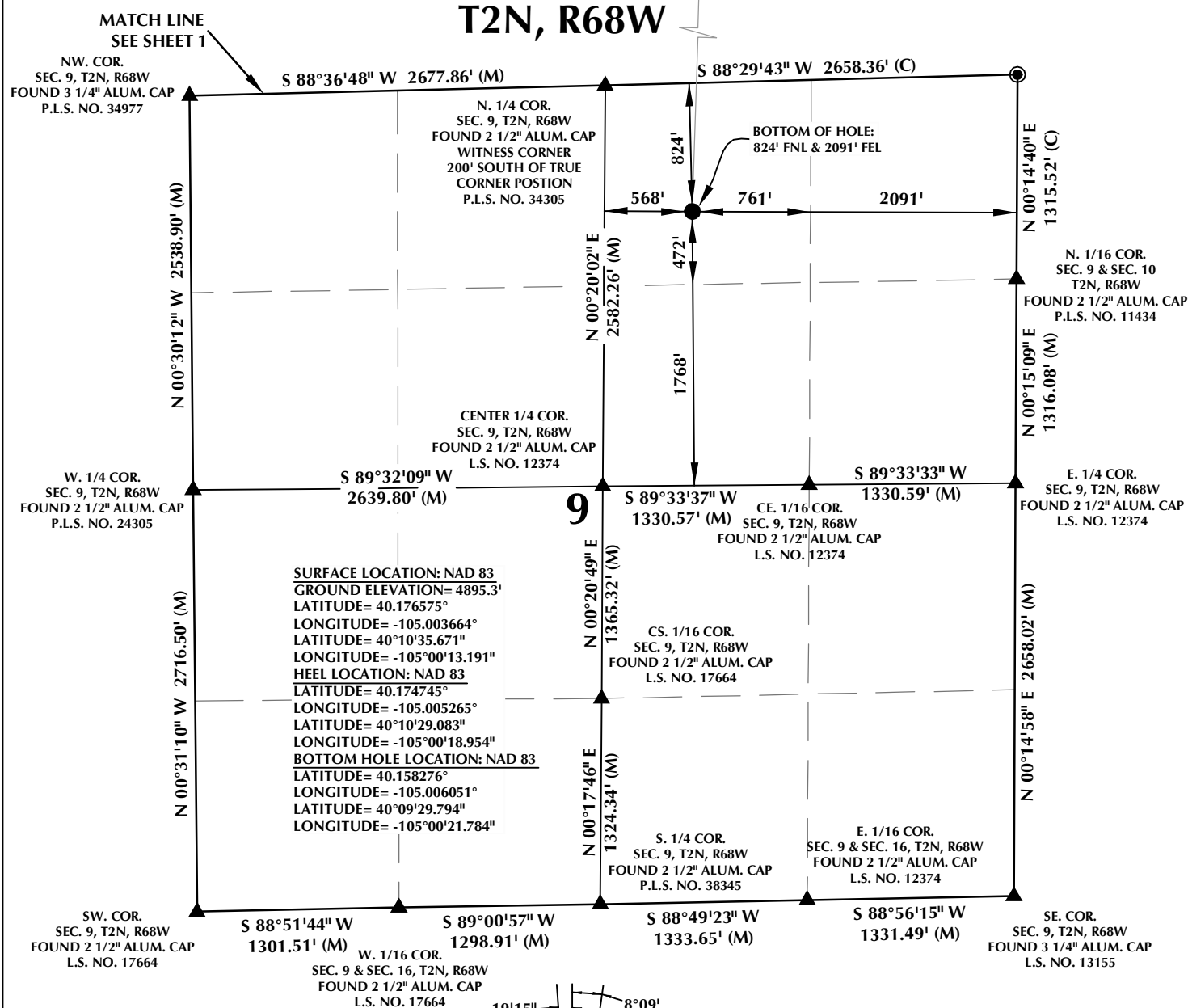
1099 18th Street  
Denver, Colorado 80202

**CONSULTING, LLC**

SHERIDAN OFFICE  
1095 Saberton Avenue  
Sheridan, Wyoming 82801  
Phone 307-674-0609

LOVELAND OFFICE  
1635 Foxtrail Drive, Suite 204  
Loveland, Colorado 80538  
Phone 970-776-4331

DRAFTED BY:	LMO	CHECKED BY:	RKF	SHEET NO:
DATE DRAFTED:	1/21/16	DATE SURVEYED:	1/7/16	1
REVISED:	5/10/17	FILE NAME:	15-65	1 OF 2

**NOTES:**

- ▲ INDICATES SECTION CORNER
- INDICATES CALCULATED CORNER
- ELEVATION BASED ON NAVD88 (GEOID12B)
- BASIS OF BEARING DERIVED FROM COLORADO COORDINATE SYSTEM OF 1983 NORTH ZONE.
- ALL MEASURED DISTANCES ARE GRID.  
COMBINED SCALE FACTOR: .99972556 CALCULATED FROM THE W. 1/4 CORNER OF SECTION 4, T2N, R68W  
OPERATOR: ROB WILSON / PDOP = 1.4
- SEE ADDENDUM TO WELL LOCATION CERTIFICATE FOR EXISTING IMPROVEMENTS WITHIN 500' OF THE WELL PAD.
- WELL FOOTAGES ARE MEASURED AT RIGHT ANGLES TO THE SECTION LINES.
- THE BOTTOM OF HOLE BEARS S01°46'38"W, 6003' FROM THE HEEL LOCATION.

**WELL PAD - NEWBY 27N-33Z**

NEWBY STATE 36N-4HZ  
WELL LOCATION CERTIFICATE  
589' FSL & 1485' FEL SWSE (SURFACE)  
LOCATED IN SECTION 33  
T3N, R68W, 6TH P.M.  
74' FNL & 1932' FEL LOT 2 (NWNE) (HEEL)  
LOCATED IN SECTION 4  
824' FNL & 2091' FEL NWNE (BOTTOM)  
LOCATED IN SECTION 9  
T2N, R68W, 6TH P.M.  
WELD COUNTY, COLORADO

**Kerr-McGee Oil &  
Gas Onshore L.P.**  
1099 18th Street  
Denver, Colorado 80202

**CONSULTING, LLC**

**SHERIDAN OFFICE**  
1095 Saberton Avenue  
Sheridan, Wyoming 82801  
Phone 307-674-0609

**LOVELAND OFFICE**  
1635 Foxtrail Drive, Suite 204  
Loveland, Colorado 80538  
Phone 970-776-4331

DRAFTED BY:	LMO	CHECKED BY:	RKF	SHEET NO:
DATE DRAFTED:	1/21/16	DATE SURVEYED:	1/7/16	2
REVISED:	5/10/17	FILE NAME:	15-65	2 OF 2