

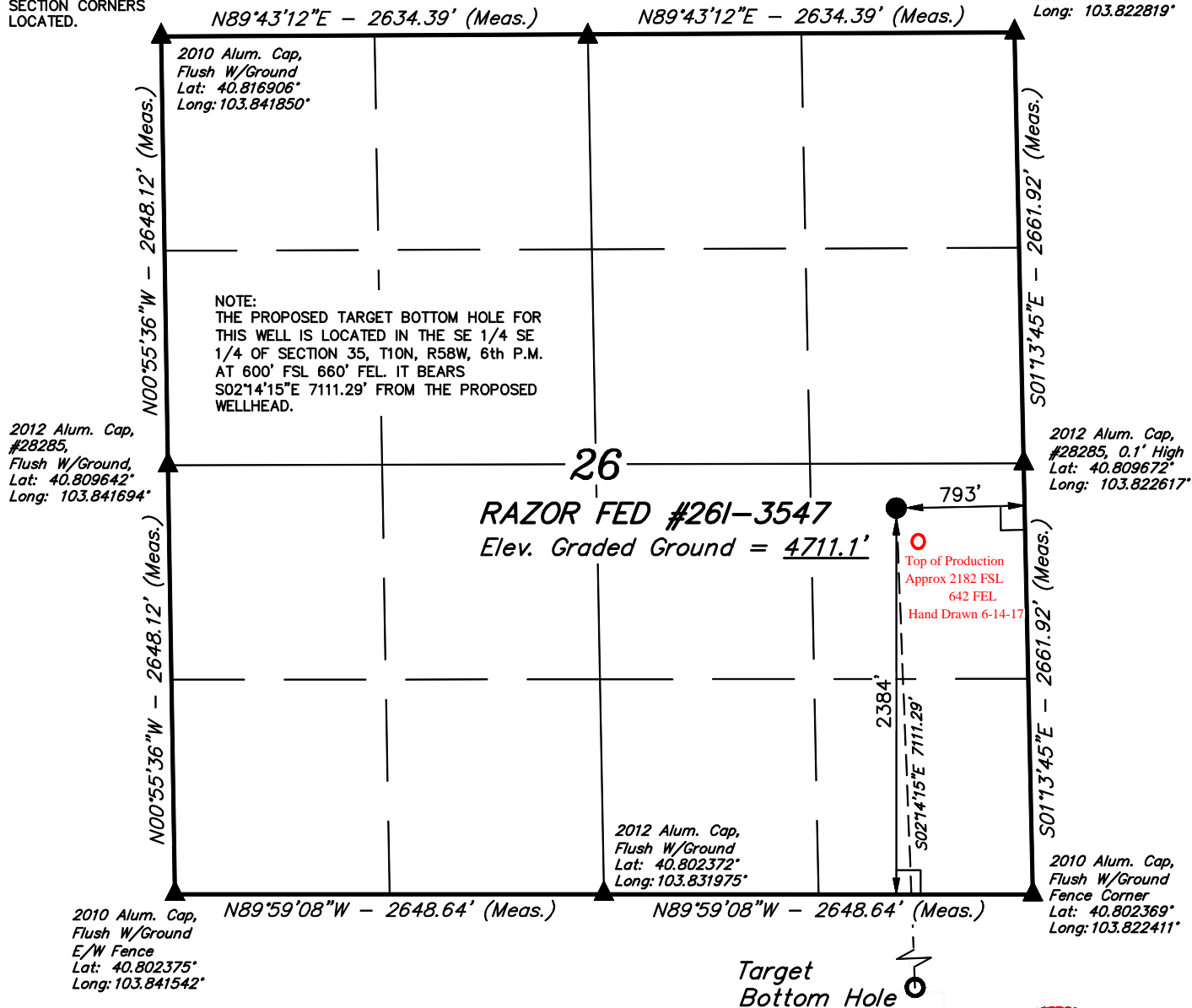
LEGEND:

- L = 90° SYMBOL
 ● = PROPOSED WELLHEAD.
 ○ = TARGET BOTTOM HOLE.
 ▲ = SECTION CORNERS LOCATED.

T10N, R58W, 6th P.M.

2012 Alum. Cap,
#28285, 0.1' High
Lat: 40.816942°
Long: 103.832336°

2010 Alum. Cap,
0.3' High, Fence Corner
Lat: 40.816975°
Long: 103.822819°



PDOP = 1.3

NAD 83 (SURFACE LOCATION)	
LATITUDE = 40°48'32.08" (40.808911)	
LONGITUDE = 103°49'31.65" (103.825458)	
NAD 27 (SURFACE LOCATION)	
LATITUDE = 40°48'32.13" (40.808925)	
LONGITUDE = 103°49'29.84" (103.824956)	



CERTIFICATE
 THIS IS TO CERTIFY THAT THE ABOVE PLAT WAS PREPARED FROM FIELD NOTES OF ACTUAL SURVEYS MADE BY ME OR UNDER MY SUPERVISION AND THAT THE SAME ARE TRUE AND CORRECT TO THE BEST OF MY KNOWLEDGE AND BELIEF.

REGISTERED LAND SURVEYOR
 REGISTRATION NO. 28285
 STATE OF COLORADO
 07-28-15

BASIS OF BEARINGS
 BASIS OF BEARINGS IS A G.P.S. OBSERVATION

BASIS OF ELEVATION

SPOT ELEVATION LOCATED AT THE NORTHEAST CORNER OF SECTION 15, T9N, R58W, 6th P.M. TAKEN FROM THE GATEHOOK SPRING, QUADRANGLE, COLORADO, WELD COUNTY, 7.5 MINUTE QUAD (TOPOGRAPHIC MAP) PUBLISHED BY THE UNITED STATES DEPARTMENT OF THE INTERIOR, GEOLOGICAL SURVEY. SAID ELEVATION IS MARKED AS BEING 4679 FEET.



WHITING OIL & GAS CORP.

RAZOR FED #261-3547 (SURFACE LOCATION)
 NE 1/4 SE 1/4, SECTION 26, T10N, R58W, 6th P.M.
 WELD COUNTY, COLORADO

SURVEYED BY: JARED CHRISTOPHER, D.W.	DATE: 06-15-15
DRAWN BY: K.B.	DATE DRAWN: 07-08-15
SCALE: 1" = 1000'	REVISED: 07-28-15 M.D.

WELL LOCATION PLAT



UELS, LLC
 Corporate Office * 85 South 200 East
 Vernal, UT 84078 * (435) 789-1017

LEGEND:

- L = 90° SYMBOL
 ● = PROPOSED WELLHEAD.
 ○ = TARGET BOTTOM HOLE.
 ▲ = SECTION CORNERS LOCATED.

T10N, R58W, 6th P.M.

Surface
Location

2012 Alum. Cap
Flush W/Ground
Lat: 40.802372°
Long: 103.831975°

2010 Alum. Cap
Flush W/Ground
Fence Corner
Lat: 40.802369°
Long: 103.822411°

2010 Alum. Cap
Flush W/Ground
E/W Fence
Lat: 40.802375°
Long: 103.841542°

N89°59'08"W - 2648.64' (Meas.)

N89°59'08"W - 2648.64' (Meas.)

S00°54'40"E - 2669.61' (Meas.)

N01°08'08"W - 2660.46' (Meas.)

S02°14'15"E
7111.29'

2012 Alum. Cap,
#28285, 0.2' High
Lat: 40.795050°
Long: 103.841386°

2012 Alum. Cap
0.5' High
Lat: 40.795069°
Long: 103.822222°

NOTE:
THE PROPOSED TARGET BOTTOM HOLE
BEARS S02°14'15"E 7111.29' FROM THE
PROPOSED WELLHEAD WHICH IS LOCATED IN
THE NE 1/4 SE 1/4 OF SECTION 26, T10N,
R58W, 6th P.M. AT 2384' FSL 793' FEL.

35

RAZOR FED #261-3547
Target Bottom Hole

2010 Alum. Cap
0.3' High
Lat: 40.787725°
Long: 103.841233°

T10N
T9N

N89°48'47"E - 2658.94' (Meas.)

N89°48'47"E - 2658.94' (Meas.)

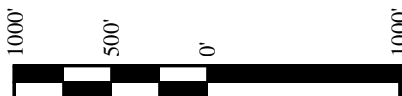
2010 Alum. Cap
0.1' High, Steel Post
Lat: 40.787772°
Long: 103.822033°

2010 Alum. Cap
Flush W/Ground
Lat: 40.787747°
Long: 103.831633°

CERTIFICATE

THIS IS TO CERTIFY THAT THE ABOVE MAP WAS PREPARED FROM FIELD
NOTES OF ACTUAL SURVEYS MADE BY ME OR UNDER MY SUPERVISION
AND THAT THE SAME ARE TRUE AND CORRECT TO THE BEST OF MY
KNOWLEDGE AND BELIEF.

NAD 83 (TARGET BOTTOM HOLE)
LATITUDE = 40°47'21.88" (40.789411)
LONGITUDE = 103°49'28.06" (103.824461)
NAD 27 (TARGET BOTTOM HOLE)
LATITUDE = 40°47'21.93" (40.789425)
LONGITUDE = 103°49'26.25" (103.823958)



REGISTERED LAND SURVEYOR
 REGISTRATION NO. 28285
 STATE OF COLORADO
 07-28-15

BASIS OF BEARINGS

BASIS OF BEARINGS IS A G.P.S. OBSERVATION

BASIS OF ELEVATION

SPOT ELEVATION LOCATED AT THE NORTHEAST CORNER OF SECTION 15, T9N,
R58W, 6th P.M. TAKEN FROM THE GATEHOOK SPRING, QUADRANGLE,
COLORADO, WELD COUNTY, 7.5 MINUTE QUAD (TOPOGRAPHIC MAP) PUBLISHED
BY THE UNITED STATES DEPARTMENT OF THE INTERIOR, GEOLOGICAL SURVEY.
SAID ELEVATION IS MARKED AS BEING 4679 FEET.



WHITING OIL & GAS CORP.

RAZOR FED #261-3547 (TARGET BOTTOM HOLE)
SE 1/4 SE 1/4, SECTION 35, T10N, R58W, 6th P.M.
WELD COUNTY, COLORADO

SURVEYED BY: JARED CHRISTOPHER, D.W.	DATE: 06-15-15
DRAWN BY: K.B.	DATE DRAWN: 07-08-15
SCALE: 1" = 1000'	REVISED: 07-28-15 M.D.
WELL LOCATION PLAT	



UELS, LLC
 Corporate Office * 85 South 200 East
 Vernal, UT 84078 * (435) 789-1017