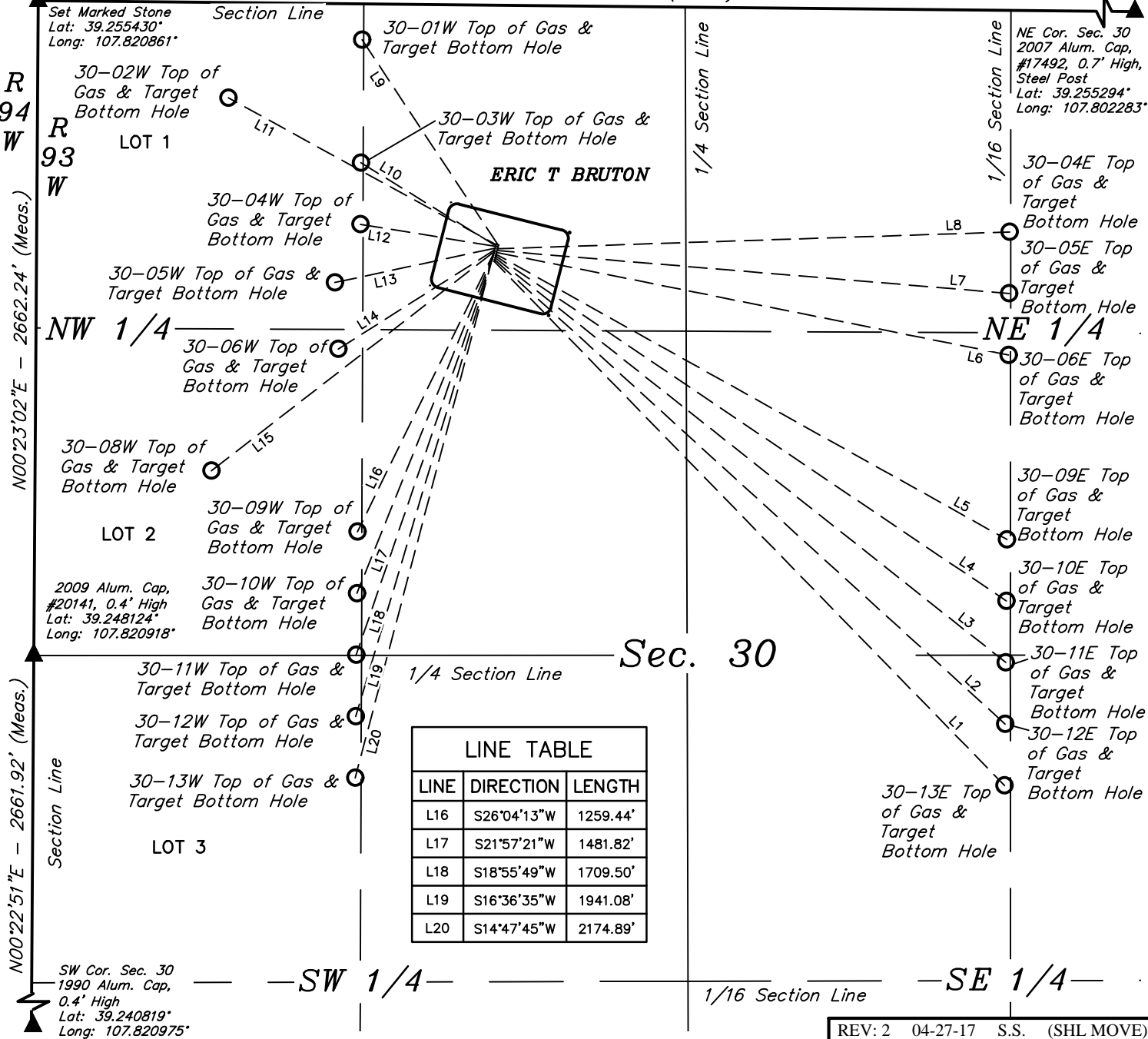




LINE TABLE			LINE TABLE			LINE TABLE		
LINE	DIRECTION	LENGTH	LINE	DIRECTION	LENGTH	LINE	DIRECTION	LENGTH
L1	S44°14'30"E	2975.13'	L6	S78°40'12"E	2124.18'	L11	N61°16'05"W	1240.95'
L2	S47°42'28"E	2806.77'	L7	S85°13'06"E	2090.58'	L12	N80°42'58"W	556.47'
L3	S51°36'22"E	2649.74'	L8	N88°07'10"E	2084.96'	L13	S77°52'55"W	665.69'
L4	S55°57'55"E	2506.68'	L9	N33°32'54"W	1002.13'	L14	S57°36'30"W	752.00'
L5	S60°49'13"E	2379.82'	L10	N58°23'53"W	653.70'	L15	S52°13'52"W	1453.91'



N89°25'49"W - 5263.20' (Meas.)



REV: 2 04-27-17 S.S. (SHL MOVE)

NOTES:

LARAMIE ENERGY, LLC

BRUTON 30-03 PAD
NE 1/4 NW 1/4 SECTION 30, T9S, R93W, 6th P.M.
MESA COUNTY, COLORADO



UELS, LLC
Corporate Office * 85 South 200 East
Vernal, UT 84078 * (435) 789-1017

DRAWN BY: M.D.	DATE DRAWN: 04-29-15
SCALE: 1" = 500'	
MULTI-Well PLAN	FIGURE #7