



Actual Wellpath Report

Staind G35-19 AWP

Page 1 of 4



Rev'd. COGCC
8-24-07

**BAKER
HUGHES**

INTEQ

REFERENCE WELLPATH IDENTIFICATION

Operator	NOBLE ENERGY, INC	Slot	Slot #1 Staind G35-19
Area	COLORADO	Well	Staind G35-19
Field	WELD COUNTY (NOBLE NAD 83)	Wellbore	Staind G35-19 AWB
Facility	SEC.35-T4N-R65W		



REPORT SETUP INFORMATION

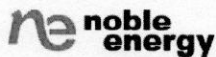
Projection System	NAD83 / Lambert Colorado State Planes, Northern Zone (501), US feet	Software System	WellArchitect™ 1.2
North Reference	True	User	Boltcasm
Scale	0.999957	Report Generated	08/22/06 at 11:07:40
Wellbore last revised	08/22/06	Database/Source file	WA_Denver/Staind_G35

WELLPATH LOCATION

	Local coordinates		Grid coordinates		Geographic coordinates	
	North [feet]	East [feet]	Easting [US feet]	Northing [US feet]	Latitude [°]	Longitude [°]
Slot Location	0.00	0.00	3240598.86	1342721.91	40 16 15.456N	104 38 15.900W
Facility Reference Pt			3240598.86	1342721.91	40 16 15.456N	104 38 15.900W
Field Reference Pt			3000000.00	4454105.15	48 46 34.315N	105 30 00.000W

WELLPATH DATUM

Calculation method	Minimum curvature	Ensign 7 (RT) to Facility Vertical Datum	4762.00 feet
Horizontal Reference Pt	Slot	Ensign 7 (RT) to Mean Sea Level	4762.00 feet
Vertical Reference Pt	Ensign 7 (RT)	Facility Vertical Datum to Mud Line (Facility)	0.00 feet
MD Reference Pt	Ensign 7 (RT)	Section Origin	N 0.00, E 0.00 ft
Field Vertical Reference	Mean Sea Level	Section Azimuth	50.93°



NOBLE ENERGY, INC

Location: COLORADO

Slot: Slot #1 Staind G35-19

Field: WELD COUNTY (NOBLE NAD 83)

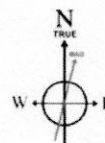
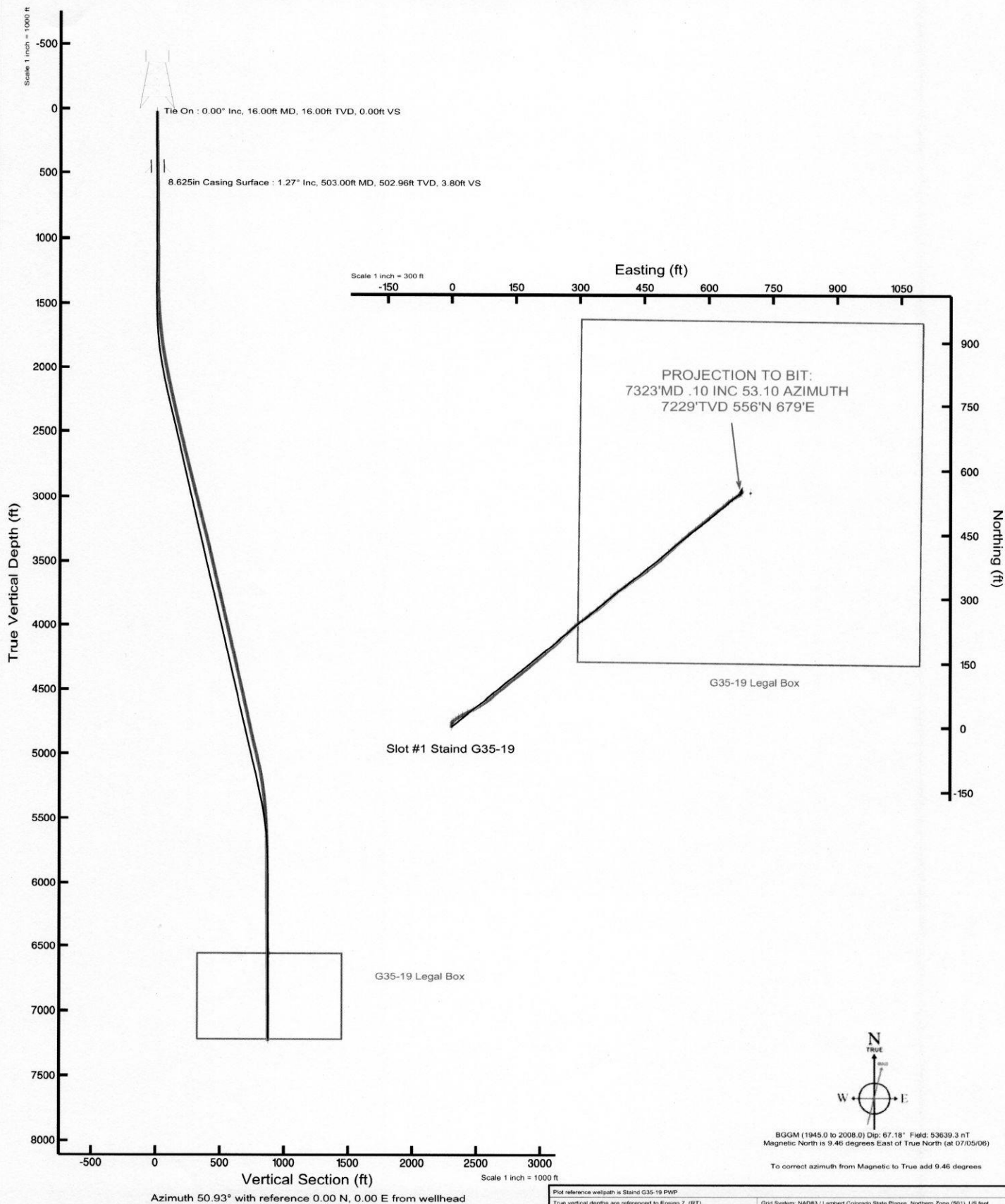
Well: Staind G35-19

Facility: SEC 35-T4N-R65W

Wellbore: Staind G35-19 PWB



INTEQ



BGGM (1945.0 to 2008.0) Dip: 67.18° Field: 53639.3 nT
Magnetic North is 9.46 degrees East of True North (at 07/05/06)

To correct azimuth from Magnetic to True add 9.46 degrees

Plot reference wellpath is Staind G35-19 PWB	
True vertical depths are referenced to Ensign 7 (RT)	Grid System: NAD83 / Lambert Colorado State Planes, Northern Zone (501), US feet
Measured depths are referenced to Ensign 7 (RT)	North Reference: True north
Ensign 7 (RT) to Mean Sea Level: 492.80 ft	Scale: True distance
Mean Sea Level to Mud line (Facility): SEC 35-T4N-R65W: 0 feet	Depths are in feet
Coordinates are in feet referenced to Slot	Created by: jtd/asm on 22/Aug/2006

Actual Wellpath Report

Staind G35-19 AWP

Page 2 of 4

INTEQ

REFERENCE WELLPATH IDENTIFICATION

Operator	NOBLE ENERGY, INC	Slot	Slot #1 Staind G35-19
Area	COLORADO	Well	Staind G35-19
Field	WELD COUNTY (NOBLE NAD 83)	Wellbore	Staind G35-19 AWB
Facility	SEC.35-T4N-R65W		

WELLPATH DATA (64 stations) † = interpolated/extrapolated station

MD [feet]	Inclination [°]	Azimuth [°]	TVD [feet]	Vert Sect [feet]	North [feet]	East [feet]	DLS [°/100ft]
0.00†	0.000	0.000	0.00	0.00	0.00	0.00	0.00
16.00	0.000	0.000	16.00	0.00	0.00	0.00	0.00
552.00	1.400	5.600	551.95	4.60	6.52	0.64	0.26
740.00	0.100	15.100	739.93	6.35	8.96	0.91	0.69
927.00	0.300	47.400	926.93	6.97	9.45	1.31	0.12
1115.00	0.400	357.900	1114.92	7.86	10.44	1.65	0.16
1303.00	0.500	323.800	1302.92	8.29	11.76	1.14	0.15
1396.00	1.200	34.400	1395.91	9.25	12.89	1.45	1.22
1490.00	3.700	57.600	1489.82	13.20	15.33	4.57	2.81
1584.00	4.400	47.400	1583.58	19.82	19.39	9.78	1.07
1678.00	5.700	58.300	1677.22	28.04	24.29	16.41	1.71
1772.00	7.800	65.000	1770.56	38.86	29.43	26.16	2.38
1865.00	8.700	63.300	1862.60	51.85	35.26	38.17	1.00
1959.00	10.600	61.800	1955.26	67.29	42.54	52.14	2.04
2053.00	11.400	56.600	2047.54	85.03	51.74	67.51	1.36
2147.00	12.300	50.600	2139.54	104.29	63.21	83.01	1.62
2241.00	12.800	53.000	2231.29	124.70	75.83	99.06	0.77
2335.00	13.200	49.900	2322.88	145.84	89.01	115.59	0.86
2427.00	13.200	51.600	2412.45	166.85	102.30	131.85	0.42
2521.00	13.500	50.200	2503.91	188.55	115.99	148.69	0.47
2615.00	13.600	50.200	2595.30	210.57	130.09	165.61	0.11
2709.00	14.300	53.000	2686.53	233.22	144.15	183.38	1.03
2803.00	14.600	48.100	2777.56	256.66	159.05	201.47	1.34
2897.00	14.700	49.500	2868.50	280.42	174.71	219.35	0.39
2991.00	14.500	49.500	2959.46	304.10	190.10	237.37	0.21
3084.00	14.200	46.400	3049.56	327.11	205.53	254.48	0.89
3178.00	14.400	47.100	3140.65	350.27	221.43	271.40	0.28
3272.00	14.100	49.900	3231.76	373.38	236.77	288.72	0.80
3366.00	13.000	52.300	3323.14	395.40	250.61	305.84	1.31
3460.00	13.400	53.800	3414.66	416.85	263.51	323.00	0.56
3554.00	13.100	54.100	3506.16	438.36	276.18	340.42	0.33
3648.00	13.500	47.100	3597.64	459.95	289.90	357.08	1.76
3741.00	12.800	49.500	3688.20	481.08	303.98	372.87	0.95
3835.00	12.600	49.900	3779.90	501.74	317.35	388.63	0.23
3929.00	14.300	53.800	3871.32	523.58	330.81	405.84	2.05
4022.00	14.000	53.100	3961.50	546.30	344.35	424.11	0.37
4116.00	12.800	53.100	4052.94	568.07	357.43	441.53	1.28
4210.00	12.400	53.800	4144.68	588.55	369.64	458.00	0.46
4303.00	13.100	52.000	4235.38	609.06	382.03	474.36	0.87
4397.00	13.100	46.700	4326.94	630.34	395.89	490.51	1.28

Actual Wellpath Report

Staind G35-19 AWP

Page 3 of 4

REFERENCE WELLPATH IDENTIFICATION			
Operator	NOBLE ENERGY, INC	Slot	Slot #1 Staind G35-19
Area	COLORADO	Well	Staind G35-19
Field	WELD COUNTY (NOBLE NAD 83)	Wellbore	Staind G35-19 AWB
Facility	SEC.35-T4N-R65W		

WELLPATH DATA (64 stations)							
MD [feet]	Inclination [°]	Azimuth [°]	TVD [feet]	Vert Sect [feet]	North [feet]	East [feet]	DLS [°/100ft]
4491.00	13.500	48.500	4418.42	651.92	410.47	506.48	0.61
4584.00	13.000	47.800	4508.94	673.21	424.69	522.36	0.56
4678.00	12.500	49.500	4600.63	693.94	438.39	537.92	0.66
4772.00	12.000	50.600	4692.49	713.88	451.20	553.21	0.59
4865.00	12.800	48.500	4783.32	733.84	464.17	568.40	0.99
4959.00	13.500	50.200	4874.85	755.22	478.09	584.63	0.85
5053.00	14.100	52.000	4966.14	777.63	492.16	602.08	0.78
5147.00	12.600	51.700	5057.60	799.34	505.57	619.15	1.60
5240.00	10.800	49.900	5148.66	818.19	517.47	633.78	1.97
5334.00	8.700	54.100	5241.30	834.10	527.31	646.27	2.36
5427.00	6.400	54.800	5333.49	846.29	534.42	656.21	2.48
5520.00	4.600	57.300	5426.05	855.17	539.43	663.58	1.95
5614.00	3.000	50.900	5519.84	861.38	543.01	668.66	1.76
5708.00	1.900	63.600	5613.76	865.36	545.26	671.97	1.30
5802.00	0.600	21.800	5707.73	867.31	546.41	673.55	1.60
5896.00	0.500	10.900	5801.73	868.05	547.27	673.81	0.15
6083.00	0.500	4.500	5988.72	869.24	548.88	674.02	0.03
6270.00	0.600	45.700	6175.72	870.78	550.38	674.79	0.21
6456.00	0.500	19.700	6361.71	872.44	551.82	675.76	0.14
6644.00	0.500	34.400	6549.70	873.93	553.27	676.50	0.07
6831.00	0.400	49.500	6736.69	875.36	554.37	677.46	0.08
7019.00	0.300	30.200	6924.69	876.48	555.22	678.20	0.08
7269.00	0.100	53.100	7174.69	877.31	555.92	678.71	0.08
7323.00	0.100	53.100	7228.69	877.40	555.97	678.78	0.00

HOLE & CASING SECTIONS Ref Wellbore: Staind G35-19 AWB Ref Wellpath: Staind G35-19 AWP									
String/Diameter	Start MD [feet]	End MD [feet]	Interval [feet]	Start TVD [feet]	End TVD [feet]	Start N/S [feet]	Start E/W [feet]	End N/S [feet]	End E/W [feet]
12.25in Open Hole	16.00	503.00	487.00	16.00	502.96	0.00	0.00	5.38	0.53
8.625in Casing Surface	16.00	503.00	487.00	16.00	502.96	0.00	0.00	5.38	0.53
7.875in Open Hole	16.00	7323.00	7307.00	16.00	7228.69	0.00	0.00	555.97	678.78

Actual Wellpath Report

Staind G35-19 AWP

Page 4 of 4

REFERENCE WELLPATH IDENTIFICATION			
Operator	NOBLE ENERGY, INC	Slot	Slot #1 Staind G35-19
Area	COLORADO	Well	Staind G35-19
Field	WELD COUNTY (NOBLE NAD 83)	Wellbore	Staind G35-19 AWB
Facility	SEC.35-T4N-R65W		

TARGETS									
Name	MD [feet]	TVD [feet]	North [feet]	East [feet]	Grid East [us survey feet]	Grid North [us survey feet]	Latitude [°]	Longitude [°]	Shape
G35-19 Legal Box		6556.00	550.17	697.82	3241291.27	1343278.81	40 16 20.893N	104 38 06.897W	square
G35-19 Target BHL		6556.00	550.17	677.82	3241271.27	1343278.62	40 16 20.893N	104 38 07.155W	point

WELLPATH COMPOSITION				Ref Wellbore: Staind G35-19 AWB	Ref Wellpath: Staind G35-19 AWP
Start MD [feet]	End MD [feet]	Positional Uncertainty Model		Log Name/Comment	Wellbore
16.00	7323.00	MTC (Collar, pre-2000) (Standard)		Log #1	Staind G35-19 AWB