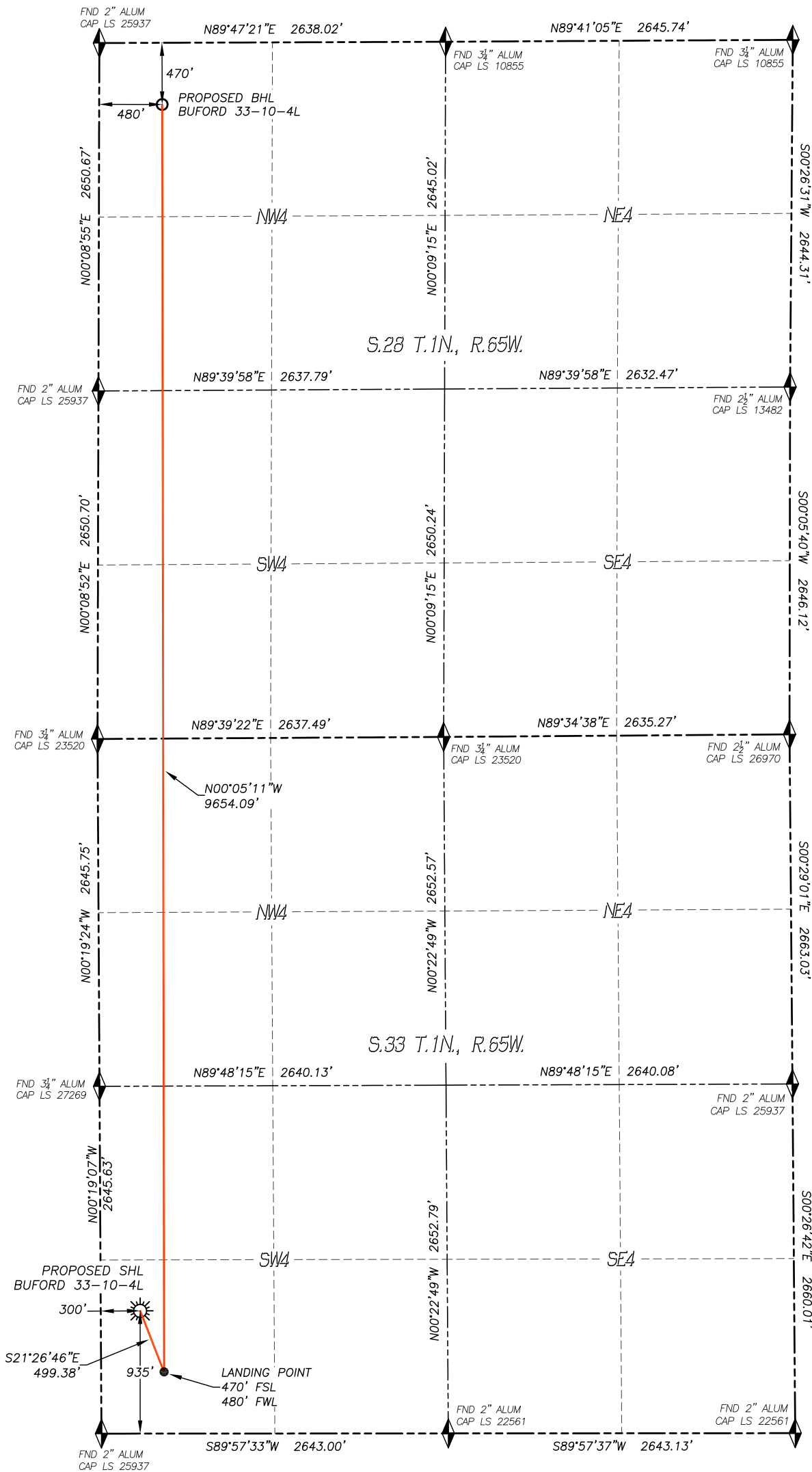


WELL LOCATION CERTIFICATE
BUFORD 33-10-4L

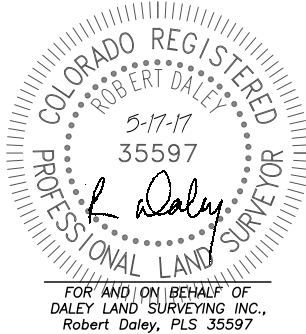
SECTION: 33
TOWNSHIP: 1N
RANGE: 65W



IN ACCORDANCE WITH A REQUEST FROM CONFLUENCE RESOURCES, DALEY LAND SURVEYING, INC. HAS DETERMINED THE SURFACE LOCATION OF THE BUFORD 33-10-4L WELL TO BE 935' FSL, 300' FWL, AS MEASURED AT NINETY (90) DEGREES FROM THE SECTION LINES OF SECTION 33, TOWNSHIP 1 NORTH, RANGE 65 WEST AND THE BOTTOM HOLE LOCATION TO BE 470' FNL, 480' FWL, AS MEASURED AT NINETY (90) DEGREES FROM THE SECTION LINES OF SECTION 28, TOWNSHIP 1 NORTH, RANGE 65 WEST, OF THE 6TH PRINCIPAL MERIDIAN, WELD COUNTY, COLORADO.

I HEREBY STATE THAT THIS WELL LOCATION CERTIFICATE WAS PREPARED BY ME OR UNDER MY DIRECT SUPERVISION, THAT THE WORK WAS COMPLETED ON 5/3/2017 FOR AND ON BEHALF OF CONFLUENCE RESOURCES, AND THAT THIS MAP DOES NOT REPRESENT A BOUNDARY SURVEY, IT IS NOT A LAND SURVEY PLAT OR AN IMPROVEMENT SURVEY PLAT AND IT IS NOT TO BE RELIED UPON FOR THE ESTABLISHMENT OF FENCE, BUILDING OR OTHER FUTURE IMPROVEMENT LINES.

- NOTES:**
- BEARINGS FOR THIS MAP ARE ASSUMED AND BASED UPON GPS OBSERVATIONS MADE BETWEEN MONUMENTS LOCATED AT THE SOUTHWEST CORNER AND THE WEST QUARTER CORNER OF SECTION 33, T.1N., R.65W.
 - HORIZONTAL DATUM IS NAD83.
 - VERTICAL DATUM IS NAVD88 AND ORIGINATES FROM THE LOCAL C.O.R.S. NETWORK, UTILIZING THE GEOID12A MODEL.
 - SEE LOCATION DRAWING FOR VISIBLE IMPROVEMENTS WITHIN 500' OF PROPOSED DISTURBED AREA.
 - SURFACE USE: AGRICULTURAL.
 - INST. OPERATOR: KYLE DALEY



NEAREST CULTURAL ITEMS:

BUILDING: 1778'± SW
BUILDING UNIT: 2040'± SW
HIGH OCC. BLD. UNIT: 5280'+
DES. OUTSIDE ACTIVITY AREA: 5280'+
PUBLIC ROAD: 919'± S
ABOVE GROUND UTILITY: 366'± W
RAILROAD: 5280'+
PROPERTY LINE: 300'± W

NAD 83 LATITUDE AND LONGITUDE

SURFACE LOCATION:

LATITUDE: N40.00310°
LONGITUDE: W104.67734°
ELEV: 5077'
PDOP: 1.2
QTR/QTR: SW4/SW4

LANDING POINT/TPZ:

LATITUDE: N40.00183°
LONGITUDE: W104.67669°

BOTTOM HOLE:

LATITUDE: N40.02832°
LONGITUDE: W104.67674°

LEGEND

- FOUND MONUMENT
- CALCULATED POSITION
- PROPOSED WELL
- BOTTOM HOLE
- ABANDONED WELL
- EXISTING WELL

