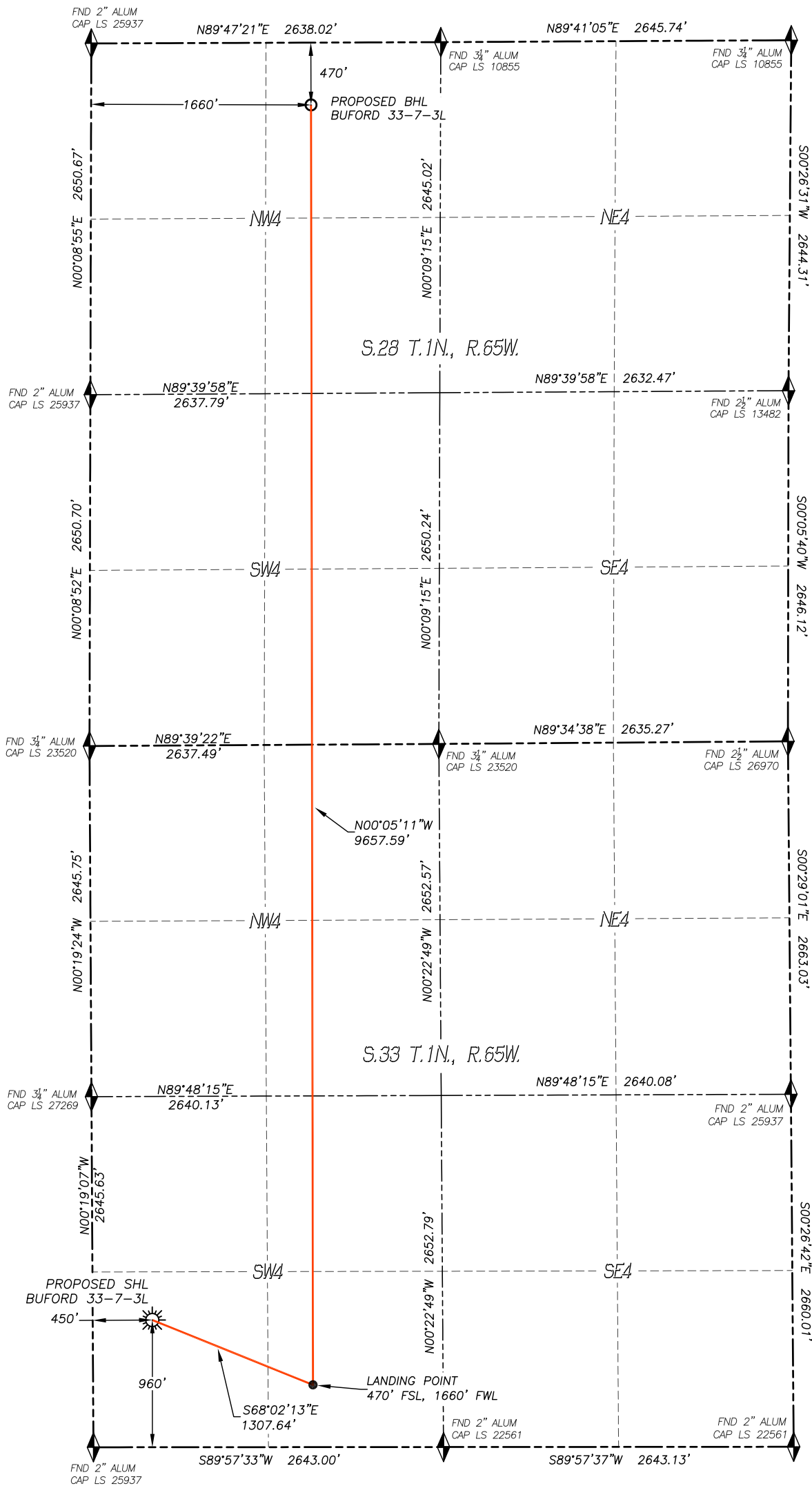


WELL LOCATION CERTIFICATE
BUFORD 33-7-3L

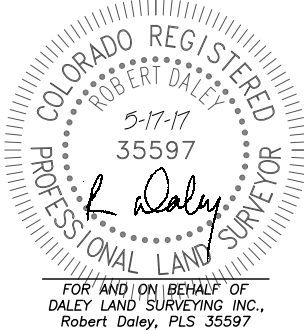
SECTION: 33
TOWNSHIP: 1N
RANGE: 65W



IN ACCORDANCE WITH A REQUEST FROM CONFLUENCE RESOURCES, DALEY LAND SURVEYING, INC. HAS DETERMINED THE SURFACE LOCATION OF THE BUFORD 33-7-3L WELL TO BE 960' FSL, 450' FWL, AS MEASURED AT NINETY (90) DEGREES FROM THE SECTION LINES OF SECTION 33, TOWNSHIP 1 NORTH, RANGE 65 WEST AND THE BOTTOM HOLE LOCATION TO BE 470' FNL, 1660' FWL, AS MEASURED AT NINETY (90) DEGREES FROM THE SECTION LINES OF SECTION 28, TOWNSHIP 1 NORTH, RANGE 65 WEST, OF THE 6TH PRINCIPAL MERIDIAN, WELD COUNTY, COLORADO.

I HEREBY STATE THAT THIS WELL LOCATION CERTIFICATE WAS PREPARED BY ME OR UNDER MY DIRECT SUPERVISION, THAT THE WORK WAS COMPLETED ON 5/3/2017 FOR AND ON BEHALF OF CONFLUENCE RESOURCES, AND THAT THIS MAP DOES NOT REPRESENT A BOUNDARY SURVEY, IT IS NOT A LAND SURVEY PLAT OR AN IMPROVEMENT SURVEY PLAT AND IT IS NOT TO BE RELIED UPON FOR THE ESTABLISHMENT OF FENCE, BUILDING OR OTHER FUTURE IMPROVEMENT LINES.

- NOTES:**
- 1) BEARINGS FOR THIS MAP ARE ASSUMED AND BASED UPON GPS OBSERVATIONS MADE BETWEEN MONUMENTS LOCATED AT THE SOUTHWEST CORNER AND THE WEST QUARTER CORNER OF SECTION 33, T.1N., R.65W.
 - 2) HORIZONTAL DATUM IS NAD83.
 - 3) VERTICAL DATUM IS NAVD88 AND ORIGINATES FROM THE LOCAL C.O.R.S. NETWORK, UTILIZING THE GEOID12A MODEL.
 - 4) SEE LOCATION DRAWING FOR VISIBLE IMPROVEMENTS WITHIN 500' OF PROPOSED DISTURBED AREA.
 - 5) SURFACE USE: AGRICULTURAL.
 - 6) INST. OPERATOR: KYLE DALEY



NEAREST CULTURAL ITEMS:

BUILDING: 1873'± SW
BUILDING UNIT: 2177'± SW
HIGH OCC. BLD. UNIT: 5280'+
DES. OUTSIDE ACTIVITY AREA: 5280'+
PUBLIC ROAD: 944'± S
ABOVE GROUND UTILITY: 516'± W
RAILROAD: 5280'+
PROPERTY LINE: 450'± W

NAD 83 LATITUDE AND LONGITUDE

SURFACE LOCATION:

LATITUDE: N40.00317°
LONGITUDE: W104.67681°
ELEV: 5081'
PDOP: 1.2
QTR/QTR: SW4/SW4

LANDING POINT/TPZ:

LATITUDE: N40.00183°
LONGITUDE: W104.67248°

BOTTOM HOLE:

LATITUDE: N40.02833°
LONGITUDE: W104.67253°

LEGEND

- FOUND MONUMENT
- CALCULATED POSITION
- PROPOSED WELL
- BOTTOM HOLE
- ABANDONED WELL
- EXISTING WELL

