



Project: SEC 12-13 T6N R66W
Site: Falken 9-11 PAD
Well: Falken 34C-9-L
Wellbore: OH
Design: Plan #1

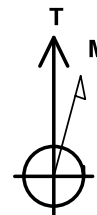
SECTION DETAILS										PROJECT DETAILS: SEC 12-13 T6N R66W	
MD	Inc	Azi	TVD	+N/-S	+E/-W	Dleg	TFace	VSect	Target	Geodetic System: US State Plane 1983 Datum: North American Datum 1983 Ellipsoid: GRS 1980 Zone: Colorado Northern Zone Colorado Northern Zone System Datum: Mean Sea Level	
0.00	0.00	0.00	0.00	0.00	0.00	0.00	0.00	0.00			
300.00	0.00	0.00	300.00	0.00	0.00	0.00	0.00	0.00			
1131.50	16.63	136.40	1119.87	-86.77	82.63	2.00	136.40	-82.82			
6733.48	16.63	136.40	6487.54	-1247.79	1188.25	0.00	0.00	-1190.86			
7858.69	89.86	270.12	7233.00	-1406.97	565.42	9.00	132.53	-568.37			
19118.22	89.86	270.12	7261.00	-1383.13	-10694.04	0.00	0.00	10691.12	PBHL_Falken 34C-9-L		

DESIGN TARGET DETAILS

Name	TVD	+N/-S	+E/-W	Northing	Easting	Latitude	Longitude	Shape
TOP_Falken 34C-9-L	7233.00	-1452.84	565.41	1424601.08	3213062.44	40.4963970	-104.7339170	Point
- plan misses target center by 45.87ft at 7858.68ft MD (7233.00 TVD, -1406.97 N, 565.44 E)								
PBHL_Falken 34C-9-L	7261.00	-1383.13	-10694.04	1424573.77	3201802.80	40.4965820	-104.7744020	Point
- plan hits target center								

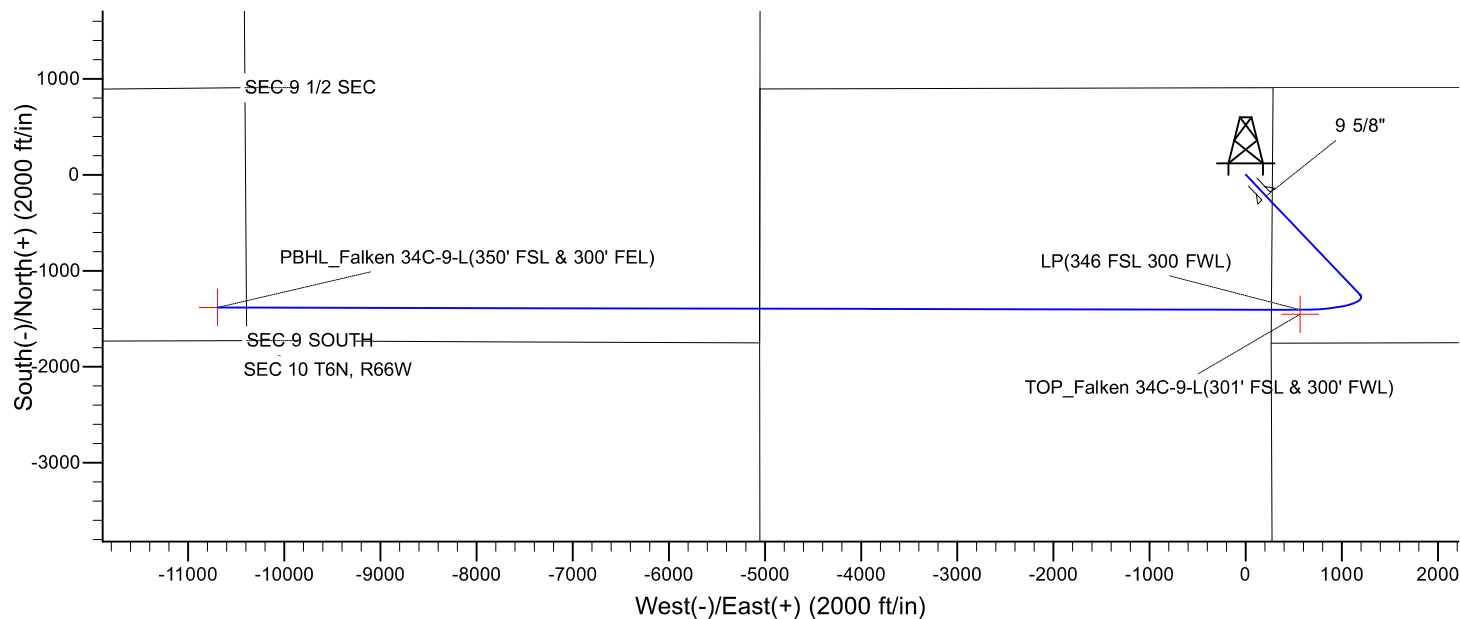
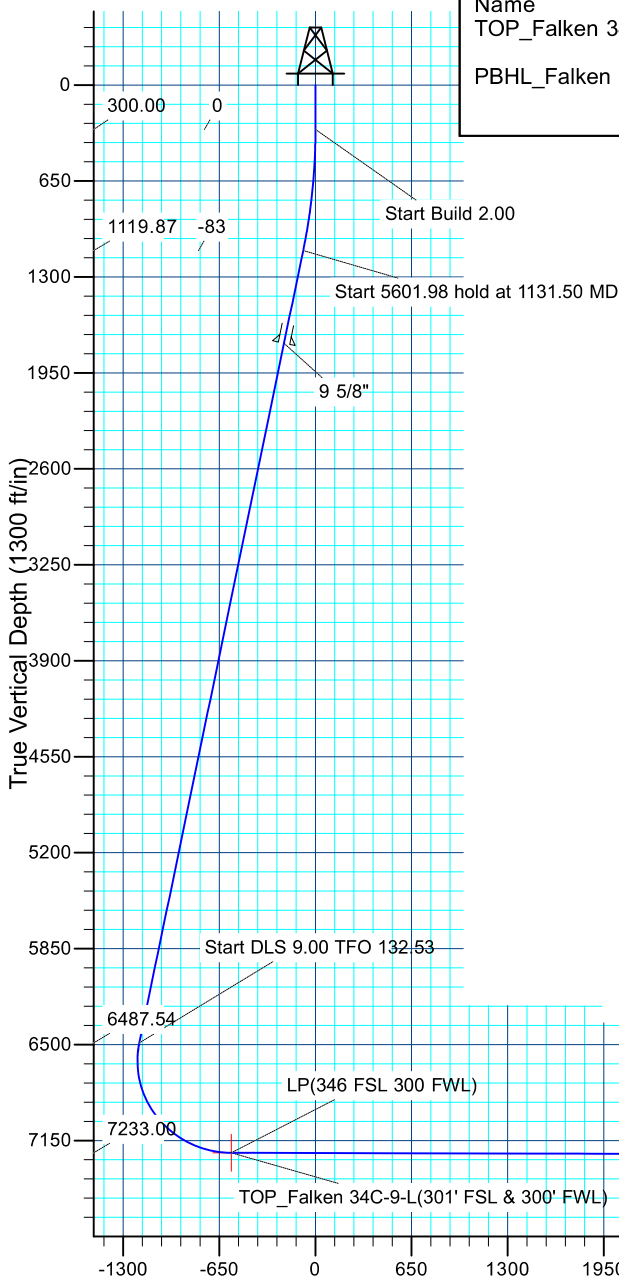
CASING DETAILS

TVD	MD	Name	Size
1750.00	1789.13	9 5/8"	9.625

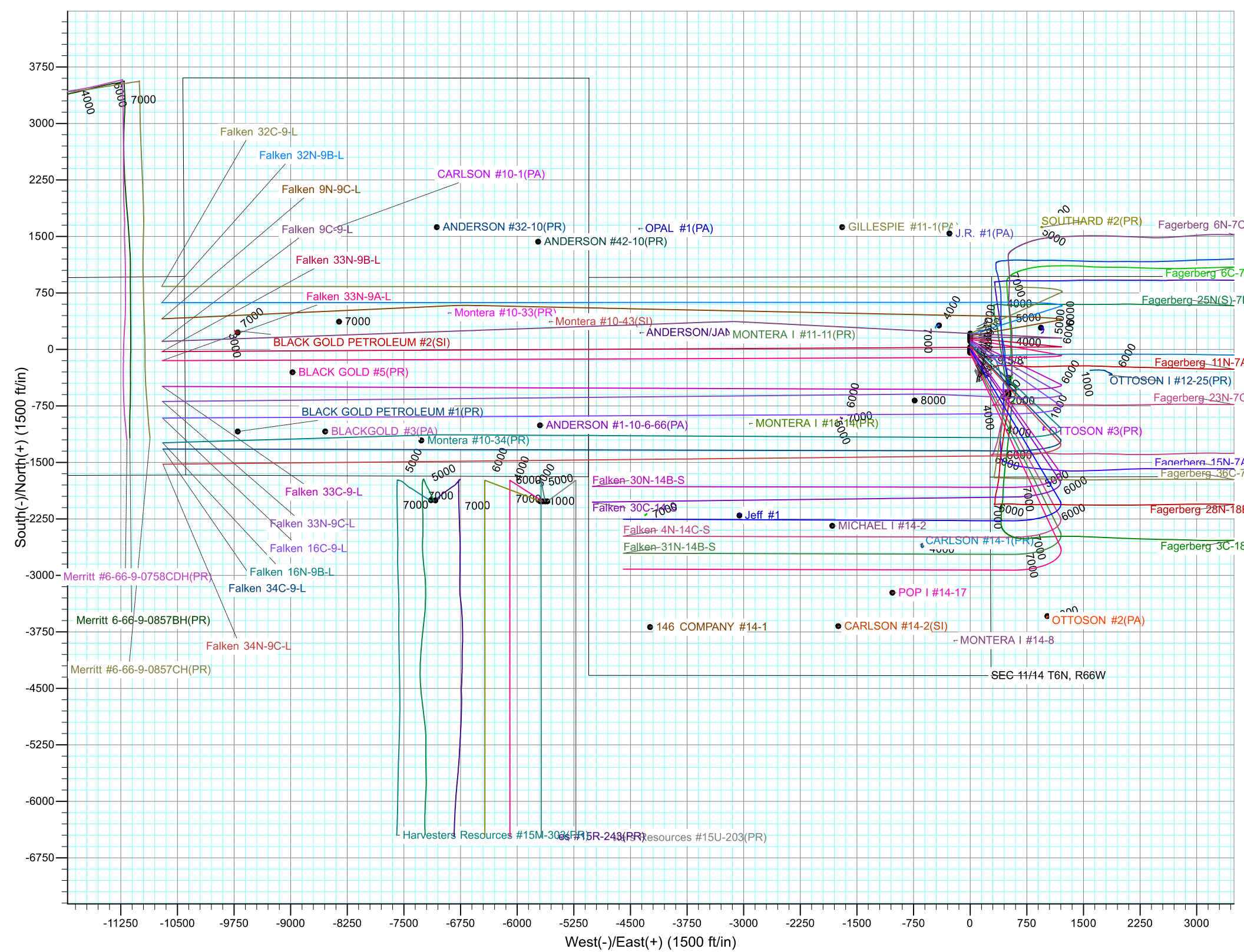


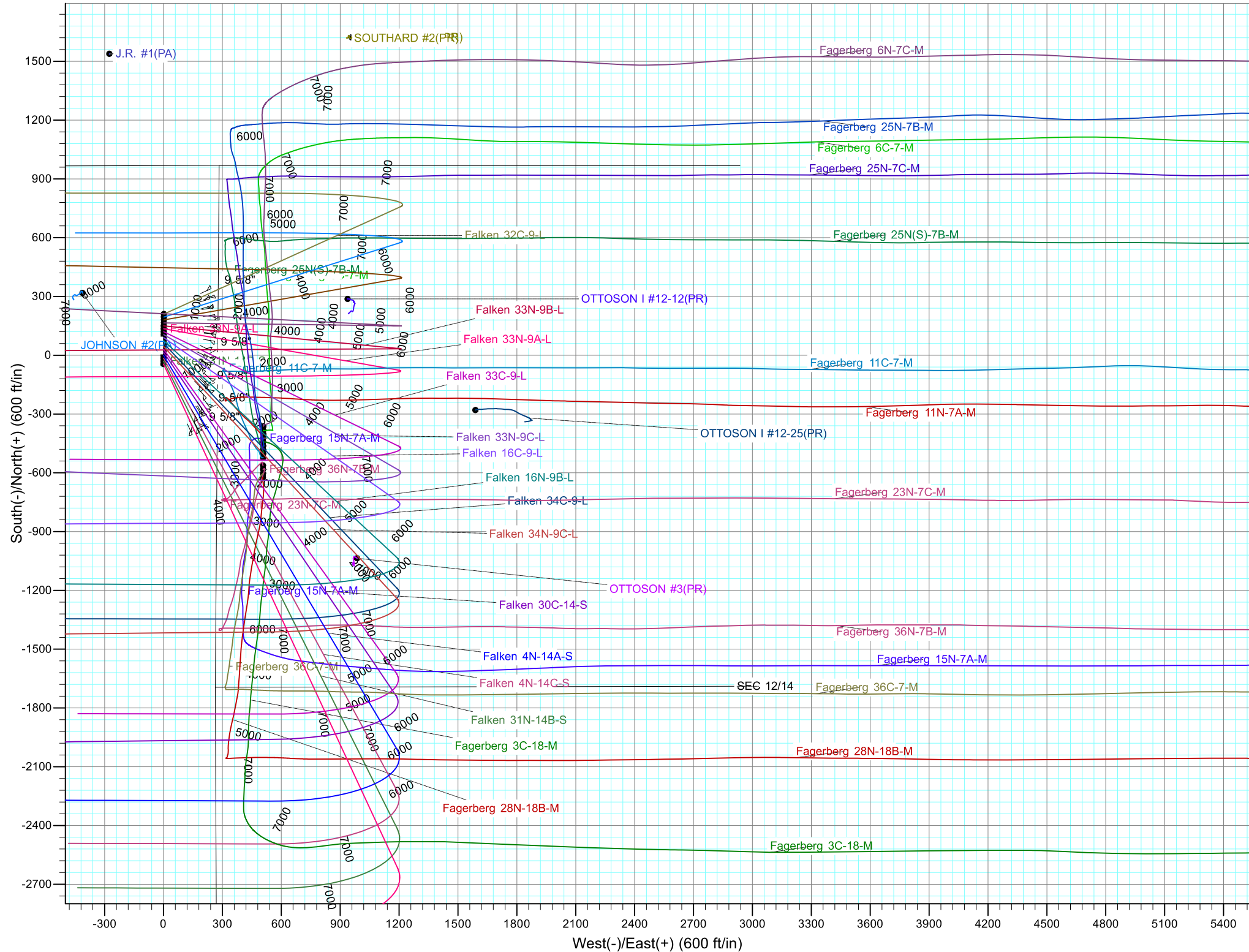
Azimuths to True North
Magnetic North: 8.22°

Magnetic Field
Strength: 52465.3snT
Dip Angle: 66.94°
Date: 4/21/2017
Model: IGRF2015



Vertical Section at 270.12° (1300 ft/in)







Synergy Resources Corporation

SEC 12-13 T6N R66W

Falken 9-11 PAD

Falken 34C-9-L

OH

Plan: Plan #1

Standard Planning Report

25 April, 2017



Database:	EDM 5000.14 Single User Db	Local Co-ordinate Reference:	Well Falken 34C-9-L
Company:	Synergy Resources Corporation	TVD Reference:	GL 4810 & KB 20 @ 4830.00ft (ASSUMED)
Project:	SEC 12-13 T6N R66W	MD Reference:	GL 4810 & KB 20 @ 4830.00ft (ASSUMED)
Site:	Falken 9-11 PAD	North Reference:	True
Well:	Falken 34C-9-L	Survey Calculation Method:	Minimum Curvature
Wellbore:	OH		
Design:	Plan #1		

Project	SEC 12-13 T6N R66W		
Map System:	US State Plane 1983	System Datum:	Mean Sea Level
Geo Datum:	North American Datum 1983		
Map Zone:	Colorado Northern Zone		

Site		Falken 9-11 PAD			
Site Position:		Northing:	1,426,199.10 ft	Latitude:	40.5007970
From:	Lat/Long	Easting:	3,212,484.63 ft	Longitude:	-104.7359450
Position Uncertainty:	3.28 ft	Slot Radius:	13.200 in	Grid Convergence:	0.49 °

Well	Falken 34C-9-L, 1754' FSL & 276' FEL					
Well Position	+N/-S	-150.10 ft	Northing:	1,426,049.00 ft	Latitude:	40.5003850
	+E/-W	-1.39 ft	Easting:	3,212,484.53 ft	Longitude:	-104.7359500
Position Uncertainty		3.28 ft	Wellhead Elevation:		Ground Level:	4,810.00 ft

Wellbore	OH				
Magnetics	Model Name	Sample Date	Declination (°)	Dip Angle (°)	Field Strength (nT)
	IGRF2015	4/21/2017	8.22	66.94	52,465

Design	Plan #1			
Audit Notes:				
Version:	Phase:	PLAN	Tie On Depth:	0.00
Vertical Section:	Depth From (TVD) (ft)	+N/-S (ft)	+E/-W (ft)	Direction (°)
	0.00	0.00	0.00	270.12

Plan Survey Tool Program	Date	4/24/2017		
Depth From (ft)	Depth To (ft)	Survey (Wellbore)	Tool Name	Remarks
1	0.00	19,118.11 Plan #1 (OH)	MWD+IFR1	
			OWSG MWD + IFR1	

Plan Sections										
Measured Depth (ft)	Inclination (°)	Azimuth (°)	Vertical Depth (ft)	+N/-S (ft)	+E/-W (ft)	Dogleg Rate (°/100ft)	Build Rate (°/100ft)	Turn Rate (°/100ft)	TFO (°)	Target
0.00	0.00	0.00	0.00	0.00	0.00	0.00	0.00	0.00	0.00	
300.00	0.00	0.00	300.00	0.00	0.00	0.00	0.00	0.00	0.00	
1,131.50	16.63	136.40	1,119.87	-86.77	82.63	2.00	2.00	0.00	136.40	
6,733.48	16.63	136.40	6,487.54	-1,247.79	1,188.25	0.00	0.00	0.00	0.00	
7,858.69	89.86	270.12	7,233.00	-1,406.97	565.42	9.00	6.51	11.88	132.53	
19,118.22	89.86	270.12	7,261.00	-1,383.13	-10,694.04	0.00	0.00	0.00	0.00	PBHL_Falken 34C-9-L

Database:	EDM 5000.14 Single User Db	Local Co-ordinate Reference:	Well Falken 34C-9-L
Company:	Synergy Resources Corporation	TVD Reference:	GL 4810 & KB 20 @ 4830.00ft (ASSUMED)
Project:	SEC 12-13 T6N R66W	MD Reference:	GL 4810 & KB 20 @ 4830.00ft (ASSUMED)
Site:	Falken 9-11 PAD	North Reference:	True
Well:	Falken 34C-9-L	Survey Calculation Method:	Minimum Curvature
Wellbore:	OH		
Design:	Plan #1		

Planned Survey									
Measured Depth (ft)	Inclination (°)	Azimuth (°)	Vertical Depth (ft)	+N/-S (ft)	+E/-W (ft)	Vertical Section (ft)	Dogleg Rate (°/100ft)	Build Rate (°/100ft)	Turn Rate (°/100ft)
0.00	0.00	0.00	0.00	0.00	0.00	0.00	0.00	0.00	0.00
100.00	0.00	0.00	100.00	0.00	0.00	0.00	0.00	0.00	0.00
200.00	0.00	0.00	200.00	0.00	0.00	0.00	0.00	0.00	0.00
300.00	0.00	0.00	300.00	0.00	0.00	0.00	0.00	0.00	0.00
Start Build 2.00									
400.00	2.00	136.40	399.98	-1.26	1.20	-1.21	2.00	2.00	0.00
500.00	4.00	136.40	499.84	-5.05	4.81	-4.82	2.00	2.00	0.00
600.00	6.00	136.40	599.45	-11.36	10.82	-10.85	2.00	2.00	0.00
700.00	8.00	136.40	698.70	-20.19	19.23	-19.27	2.00	2.00	0.00
800.00	10.00	136.40	797.47	-31.52	30.01	-30.08	2.00	2.00	0.00
900.00	12.00	136.40	895.62	-45.33	43.17	-43.27	2.00	2.00	0.00
1,000.00	14.00	136.40	993.06	-61.62	58.68	-58.81	2.00	2.00	0.00
1,100.00	16.00	136.40	1,089.64	-80.37	76.53	-76.70	2.00	2.00	0.00
1,131.50	16.63	136.40	1,119.87	-86.77	82.63	-82.82	2.00	2.00	0.00
Start 5601.98 hold at 1131.50 MD									
1,200.00	16.63	136.40	1,185.51	-100.97	96.15	-96.36	0.00	0.00	0.00
1,300.00	16.63	136.40	1,281.33	-121.70	115.89	-116.14	0.00	0.00	0.00
1,400.00	16.63	136.40	1,377.14	-142.42	135.63	-135.92	0.00	0.00	0.00
1,500.00	16.63	136.40	1,472.96	-163.15	155.36	-155.70	0.00	0.00	0.00
1,600.00	16.63	136.40	1,568.78	-183.87	175.10	-175.48	0.00	0.00	0.00
1,700.00	16.63	136.40	1,664.60	-204.60	194.83	-195.26	0.00	0.00	0.00
1,789.13	16.63	136.40	1,750.00	-223.07	212.43	-212.89	0.00	0.00	0.00
9 5/8"									
1,800.00	16.63	136.40	1,760.41	-225.32	214.57	-215.04	0.00	0.00	0.00
1,900.00	16.63	136.40	1,856.23	-246.05	234.31	-234.82	0.00	0.00	0.00
2,000.00	16.63	136.40	1,952.05	-266.77	254.04	-254.60	0.00	0.00	0.00
2,100.00	16.63	136.40	2,047.86	-287.50	273.78	-274.38	0.00	0.00	0.00
2,200.00	16.63	136.40	2,143.68	-308.22	293.52	-294.16	0.00	0.00	0.00
2,300.00	16.63	136.40	2,239.50	-328.95	313.25	-313.94	0.00	0.00	0.00
2,400.00	16.63	136.40	2,335.32	-349.67	332.99	-333.72	0.00	0.00	0.00
2,500.00	16.63	136.40	2,431.13	-370.40	352.72	-353.50	0.00	0.00	0.00
2,600.00	16.63	136.40	2,526.95	-391.12	372.46	-373.28	0.00	0.00	0.00
2,700.00	16.63	136.40	2,622.77	-411.85	392.20	-393.06	0.00	0.00	0.00
2,800.00	16.63	136.40	2,718.59	-432.57	411.93	-412.84	0.00	0.00	0.00
2,900.00	16.63	136.40	2,814.40	-453.30	431.67	-432.62	0.00	0.00	0.00
3,000.00	16.63	136.40	2,910.22	-474.02	451.41	-452.40	0.00	0.00	0.00
3,100.00	16.63	136.40	3,006.04	-494.75	471.14	-472.18	0.00	0.00	0.00
3,200.00	16.63	136.40	3,101.85	-515.47	490.88	-491.96	0.00	0.00	0.00
3,300.00	16.63	136.40	3,197.67	-536.20	510.61	-511.74	0.00	0.00	0.00
3,400.00	16.63	136.40	3,293.49	-556.92	530.35	-531.52	0.00	0.00	0.00
3,500.00	16.63	136.40	3,389.31	-577.65	550.09	-551.30	0.00	0.00	0.00
3,600.00	16.63	136.40	3,485.12	-598.37	569.82	-571.08	0.00	0.00	0.00
3,700.00	16.63	136.40	3,580.94	-619.10	589.56	-590.85	0.00	0.00	0.00
3,800.00	16.63	136.40	3,676.76	-639.82	609.30	-610.63	0.00	0.00	0.00
3,900.00	16.63	136.40	3,772.58	-660.55	629.03	-630.41	0.00	0.00	0.00
4,000.00	16.63	136.40	3,868.39	-681.27	648.77	-650.19	0.00	0.00	0.00
4,100.00	16.63	136.40	3,964.21	-702.00	668.50	-669.97	0.00	0.00	0.00
4,200.00	16.63	136.40	4,060.03	-722.72	688.24	-689.75	0.00	0.00	0.00
4,300.00	16.63	136.40	4,155.85	-743.45	707.98	-709.53	0.00	0.00	0.00
4,400.00	16.63	136.40	4,251.66	-764.17	727.71	-729.31	0.00	0.00	0.00
4,500.00	16.63	136.40	4,347.48	-784.90	747.45	-749.09	0.00	0.00	0.00
4,600.00	16.63	136.40	4,443.30	-805.62	767.19	-768.87	0.00	0.00	0.00
4,700.00	16.63	136.40	4,539.11	-826.35	786.92	-788.65	0.00	0.00	0.00

Database:	EDM 5000.14 Single User Db	Local Co-ordinate Reference:	Well Falken 34C-9-L
Company:	Synergy Resources Corporation	TVD Reference:	GL 4810 & KB 20 @ 4830.00ft (ASSUMED)
Project:	SEC 12-13 T6N R66W	MD Reference:	GL 4810 & KB 20 @ 4830.00ft (ASSUMED)
Site:	Falken 9-11 PAD	North Reference:	True
Well:	Falken 34C-9-L	Survey Calculation Method:	Minimum Curvature
Wellbore:	OH		
Design:	Plan #1		

Planned Survey									
Measured Depth (ft)	Inclination (°)	Azimuth (°)	Vertical Depth (ft)	+N/-S (ft)	+E/-W (ft)	Vertical Section (ft)	Dogleg Rate (°/100ft)	Build Rate (°/100ft)	Turn Rate (°/100ft)
4,800.00	16.63	136.40	4,634.93	-847.07	806.66	-808.43	0.00	0.00	0.00
4,900.00	16.63	136.40	4,730.75	-867.80	826.39	-828.21	0.00	0.00	0.00
5,000.00	16.63	136.40	4,826.57	-888.52	846.13	-847.99	0.00	0.00	0.00
5,100.00	16.63	136.40	4,922.38	-909.25	865.87	-867.77	0.00	0.00	0.00
5,200.00	16.63	136.40	5,018.20	-929.97	885.60	-887.55	0.00	0.00	0.00
5,300.00	16.63	136.40	5,114.02	-950.70	905.34	-907.33	0.00	0.00	0.00
5,400.00	16.63	136.40	5,209.84	-971.42	925.08	-927.11	0.00	0.00	0.00
5,500.00	16.63	136.40	5,305.65	-992.15	944.81	-946.89	0.00	0.00	0.00
5,600.00	16.63	136.40	5,401.47	-1,012.87	964.55	-966.67	0.00	0.00	0.00
5,700.00	16.63	136.40	5,497.29	-1,033.60	984.28	-986.45	0.00	0.00	0.00
5,800.00	16.63	136.40	5,593.10	-1,054.33	1,004.02	-1,006.23	0.00	0.00	0.00
5,900.00	16.63	136.40	5,688.92	-1,075.05	1,023.76	-1,026.01	0.00	0.00	0.00
6,000.00	16.63	136.40	5,784.74	-1,095.78	1,043.49	-1,045.79	0.00	0.00	0.00
6,100.00	16.63	136.40	5,880.56	-1,116.50	1,063.23	-1,065.56	0.00	0.00	0.00
6,200.00	16.63	136.40	5,976.37	-1,137.23	1,082.97	-1,085.34	0.00	0.00	0.00
6,300.00	16.63	136.40	6,072.19	-1,157.95	1,102.70	-1,105.12	0.00	0.00	0.00
6,400.00	16.63	136.40	6,168.01	-1,178.68	1,122.44	-1,124.90	0.00	0.00	0.00
6,500.00	16.63	136.40	6,263.83	-1,199.40	1,142.17	-1,144.68	0.00	0.00	0.00
6,600.00	16.63	136.40	6,359.64	-1,220.13	1,161.91	-1,164.46	0.00	0.00	0.00
6,700.00	16.63	136.40	6,455.46	-1,240.85	1,181.65	-1,184.24	0.00	0.00	0.00
6,733.48	16.63	136.40	6,487.54	-1,247.79	1,188.25	-1,190.86	0.00	0.00	0.00
Start DLS 9.00 TFO 132.53									
6,800.00	13.31	155.90	6,551.83	-1,261.69	1,197.95	-1,200.59	9.00	-4.99	29.31
6,900.00	12.68	196.64	6,649.47	-1,282.76	1,199.52	-1,202.20	9.00	-0.63	40.74
7,000.00	17.43	226.75	6,746.15	-1,303.58	1,185.43	-1,188.16	9.00	4.75	30.11
7,100.00	24.63	242.08	6,839.50	-1,323.64	1,156.05	-1,158.82	9.00	7.19	15.32
7,200.00	32.69	250.51	6,927.21	-1,342.45	1,112.10	-1,114.91	9.00	8.06	8.43
7,300.00	41.11	255.84	7,007.13	-1,359.54	1,054.65	-1,057.50	9.00	8.42	5.33
7,400.00	49.70	259.61	7,077.29	-1,374.49	985.13	-988.00	9.00	8.59	3.77
7,500.00	58.39	262.52	7,135.96	-1,386.94	905.24	-908.14	9.00	8.69	2.91
7,600.00	67.13	264.93	7,181.70	-1,396.57	816.95	-819.87	9.00	8.74	2.41
7,700.00	75.90	267.05	7,213.38	-1,403.15	722.44	-725.37	9.00	8.77	2.12
7,800.00	84.69	269.00	7,230.21	-1,406.52	624.03	-626.97	9.00	8.79	1.96
7,858.69	89.86	270.12	7,233.00	-1,406.97	565.42	-568.37	9.00	8.80	1.90
LP(346 FSL 300 FWL) - TOP_Falken 34C-9-L(301' FSL & 300' FWL)									
7,900.00	89.86	270.12	7,233.10	-1,406.88	524.11	-527.06	0.00	0.00	0.00
8,000.00	89.86	270.12	7,233.35	-1,406.67	424.12	-427.06	0.00	0.00	0.00
8,100.00	89.86	270.12	7,233.60	-1,406.46	324.12	-327.06	0.00	0.00	0.00
8,200.00	89.86	270.12	7,233.85	-1,406.25	224.12	-227.06	0.00	0.00	0.00
8,300.00	89.86	270.12	7,234.10	-1,406.04	124.12	-127.06	0.00	0.00	0.00
8,400.00	89.86	270.12	7,234.35	-1,405.82	24.12	-27.06	0.00	0.00	0.00
8,500.00	89.86	270.12	7,234.59	-1,405.61	-75.88	72.94	0.00	0.00	0.00
8,600.00	89.86	270.12	7,234.84	-1,405.40	-175.88	172.94	0.00	0.00	0.00
8,700.00	89.86	270.12	7,235.09	-1,405.19	-275.88	272.94	0.00	0.00	0.00
8,800.00	89.86	270.12	7,235.34	-1,404.98	-375.88	372.94	0.00	0.00	0.00
8,900.00	89.86	270.12	7,235.59	-1,404.77	-475.88	472.94	0.00	0.00	0.00
9,000.00	89.86	270.12	7,235.84	-1,404.55	-575.88	572.94	0.00	0.00	0.00
9,100.00	89.86	270.12	7,236.09	-1,404.34	-675.88	672.94	0.00	0.00	0.00
9,200.00	89.86	270.12	7,236.34	-1,404.13	-775.88	772.94	0.00	0.00	0.00
9,300.00	89.86	270.12	7,236.58	-1,403.92	-875.88	872.94	0.00	0.00	0.00
9,400.00	89.86	270.12	7,236.83	-1,403.71	-975.88	972.94	0.00	0.00	0.00
9,500.00	89.86	270.12	7,237.08	-1,403.50	-1,075.88	1,072.94	0.00	0.00	0.00
9,600.00	89.86	270.12	7,237.33	-1,403.28	-1,175.88	1,172.93	0.00	0.00	0.00
9,700.00	89.86	270.12	7,237.58	-1,403.07	-1,275.88	1,272.93	0.00	0.00	0.00

Database:	EDM 5000.14 Single User Db	Local Co-ordinate Reference:	Well Falken 34C-9-L
Company:	Synergy Resources Corporation	TVD Reference:	GL 4810 & KB 20 @ 4830.00ft (ASSUMED)
Project:	SEC 12-13 T6N R66W	MD Reference:	GL 4810 & KB 20 @ 4830.00ft (ASSUMED)
Site:	Falken 9-11 PAD	North Reference:	True
Well:	Falken 34C-9-L	Survey Calculation Method:	Minimum Curvature
Wellbore:	OH		
Design:	Plan #1		

Planned Survey										
Measured Depth (ft)	Inclination (°)	Azimuth (°)	Vertical Depth (ft)	+N/-S (ft)	+E/-W (ft)	Vertical Section (ft)	Dogleg Rate (°/100ft)	Build Rate (°/100ft)	Turn Rate (°/100ft)	
9,800.00	89.86	270.12	7,237.83	-1,402.86	-1,375.88	1,372.93	0.00	0.00	0.00	
9,900.00	89.86	270.12	7,238.08	-1,402.65	-1,475.87	1,472.93	0.00	0.00	0.00	
10,000.00	89.86	270.12	7,238.32	-1,402.44	-1,575.87	1,572.93	0.00	0.00	0.00	
10,100.00	89.86	270.12	7,238.57	-1,402.22	-1,675.87	1,672.93	0.00	0.00	0.00	
10,200.00	89.86	270.12	7,238.82	-1,402.01	-1,775.87	1,772.93	0.00	0.00	0.00	
10,300.00	89.86	270.12	7,239.07	-1,401.80	-1,875.87	1,872.93	0.00	0.00	0.00	
10,400.00	89.86	270.12	7,239.32	-1,401.59	-1,975.87	1,972.93	0.00	0.00	0.00	
10,500.00	89.86	270.12	7,239.57	-1,401.38	-2,075.87	2,072.93	0.00	0.00	0.00	
10,600.00	89.86	270.12	7,239.82	-1,401.17	-2,175.87	2,172.93	0.00	0.00	0.00	
10,700.00	89.86	270.12	7,240.07	-1,400.95	-2,275.87	2,272.93	0.00	0.00	0.00	
10,800.00	89.86	270.12	7,240.31	-1,400.74	-2,375.87	2,372.93	0.00	0.00	0.00	
10,900.00	89.86	270.12	7,240.56	-1,400.53	-2,475.87	2,472.93	0.00	0.00	0.00	
11,000.00	89.86	270.12	7,240.81	-1,400.32	-2,575.87	2,572.93	0.00	0.00	0.00	
11,100.00	89.86	270.12	7,241.06	-1,400.11	-2,675.87	2,672.93	0.00	0.00	0.00	
11,200.00	89.86	270.12	7,241.31	-1,399.90	-2,775.87	2,772.93	0.00	0.00	0.00	
11,300.00	89.86	270.12	7,241.56	-1,399.68	-2,875.87	2,872.93	0.00	0.00	0.00	
11,400.00	89.86	270.12	7,241.81	-1,399.47	-2,975.87	2,972.93	0.00	0.00	0.00	
11,500.00	89.86	270.12	7,242.06	-1,399.26	-3,075.87	3,072.93	0.00	0.00	0.00	
11,600.00	89.86	270.12	7,242.30	-1,399.05	-3,175.87	3,172.93	0.00	0.00	0.00	
11,700.00	89.86	270.12	7,242.55	-1,398.84	-3,275.87	3,272.93	0.00	0.00	0.00	
11,800.00	89.86	270.12	7,242.80	-1,398.63	-3,375.86	3,372.93	0.00	0.00	0.00	
11,900.00	89.86	270.12	7,243.05	-1,398.41	-3,475.86	3,472.93	0.00	0.00	0.00	
12,000.00	89.86	270.12	7,243.30	-1,398.20	-3,575.86	3,572.93	0.00	0.00	0.00	
12,100.00	89.86	270.12	7,243.55	-1,397.99	-3,675.86	3,672.93	0.00	0.00	0.00	
12,200.00	89.86	270.12	7,243.80	-1,397.78	-3,775.86	3,772.93	0.00	0.00	0.00	
12,300.00	89.86	270.12	7,244.04	-1,397.57	-3,875.86	3,872.93	0.00	0.00	0.00	
12,400.00	89.86	270.12	7,244.29	-1,397.35	-3,975.86	3,972.93	0.00	0.00	0.00	
12,500.00	89.86	270.12	7,244.54	-1,397.14	-4,075.86	4,072.93	0.00	0.00	0.00	
12,600.00	89.86	270.12	7,244.79	-1,396.93	-4,175.86	4,172.93	0.00	0.00	0.00	
12,700.00	89.86	270.12	7,245.04	-1,396.72	-4,275.86	4,272.93	0.00	0.00	0.00	
12,800.00	89.86	270.12	7,245.29	-1,396.51	-4,375.86	4,372.92	0.00	0.00	0.00	
12,900.00	89.86	270.12	7,245.54	-1,396.30	-4,475.86	4,472.92	0.00	0.00	0.00	
13,000.00	89.86	270.12	7,245.79	-1,396.08	-4,575.86	4,572.92	0.00	0.00	0.00	
13,100.00	89.86	270.12	7,246.03	-1,395.87	-4,675.86	4,672.92	0.00	0.00	0.00	
13,200.00	89.86	270.12	7,246.28	-1,395.66	-4,775.86	4,772.92	0.00	0.00	0.00	
13,300.00	89.86	270.12	7,246.53	-1,395.45	-4,875.86	4,872.92	0.00	0.00	0.00	
13,400.00	89.86	270.12	7,246.78	-1,395.24	-4,975.86	4,972.92	0.00	0.00	0.00	
13,500.00	89.86	270.12	7,247.03	-1,395.03	-5,075.86	5,072.92	0.00	0.00	0.00	
13,600.00	89.86	270.12	7,247.28	-1,394.81	-5,175.86	5,172.92	0.00	0.00	0.00	
13,700.00	89.86	270.12	7,247.53	-1,394.60	-5,275.85	5,272.92	0.00	0.00	0.00	
13,800.00	89.86	270.12	7,247.77	-1,394.39	-5,375.85	5,372.92	0.00	0.00	0.00	
13,900.00	89.86	270.12	7,248.02	-1,394.18	-5,475.85	5,472.92	0.00	0.00	0.00	
14,000.00	89.86	270.12	7,248.27	-1,393.97	-5,575.85	5,572.92	0.00	0.00	0.00	
14,100.00	89.86	270.12	7,248.52	-1,393.75	-5,675.85	5,672.92	0.00	0.00	0.00	
14,200.00	89.86	270.12	7,248.77	-1,393.54	-5,775.85	5,772.92	0.00	0.00	0.00	
14,300.00	89.86	270.12	7,249.02	-1,393.33	-5,875.85	5,872.92	0.00	0.00	0.00	
14,400.00	89.86	270.12	7,249.27	-1,393.12	-5,975.85	5,972.92	0.00	0.00	0.00	
14,500.00	89.86	270.12	7,249.52	-1,392.91	-6,075.85	6,072.92	0.00	0.00	0.00	
14,600.00	89.86	270.12	7,249.76	-1,392.70	-6,175.85	6,172.92	0.00	0.00	0.00	
14,700.00	89.86	270.12	7,250.01	-1,392.48	-6,275.85	6,272.92	0.00	0.00	0.00	
14,800.00	89.86	270.12	7,250.26	-1,392.27	-6,375.85	6,372.92	0.00	0.00	0.00	
14,900.00	89.86	270.12	7,250.51	-1,392.06	-6,475.85	6,472.92	0.00	0.00	0.00	
15,000.00	89.86	270.12	7,250.76	-1,391.85	-6,575.85	6,572.92	0.00	0.00	0.00	
15,100.00	89.86	270.12	7,251.01	-1,391.64	-6,675.85	6,672.92	0.00	0.00	0.00	

Database:	EDM 5000.14 Single User Db	Local Co-ordinate Reference:	Well Falken 34C-9-L
Company:	Synergy Resources Corporation	TVD Reference:	GL 4810 & KB 20 @ 4830.00ft (ASSUMED)
Project:	SEC 12-13 T6N R66W	MD Reference:	GL 4810 & KB 20 @ 4830.00ft (ASSUMED)
Site:	Falken 9-11 PAD	North Reference:	True
Well:	Falken 34C-9-L	Survey Calculation Method:	Minimum Curvature
Wellbore:	OH		
Design:	Plan #1		

Planned Survey									
Measured Depth (ft)	Inclination (°)	Azimuth (°)	Vertical Depth (ft)	+N/-S (ft)	+E/-W (ft)	Vertical Section (ft)	Dogleg Rate (°/100ft)	Build Rate (°/100ft)	Turn Rate (°/100ft)
15,200.00	89.86	270.12	7,251.26	-1,391.43	-6,775.85	6,772.92	0.00	0.00	0.00
15,300.00	89.86	270.12	7,251.50	-1,391.21	-6,875.85	6,872.92	0.00	0.00	0.00
15,400.00	89.86	270.12	7,251.75	-1,391.00	-6,975.85	6,972.92	0.00	0.00	0.00
15,500.00	89.86	270.12	7,252.00	-1,390.79	-7,075.84	7,072.92	0.00	0.00	0.00
15,600.00	89.86	270.12	7,252.25	-1,390.58	-7,175.84	7,172.92	0.00	0.00	0.00
15,700.00	89.86	270.12	7,252.50	-1,390.37	-7,275.84	7,272.92	0.00	0.00	0.00
15,800.00	89.86	270.12	7,252.75	-1,390.16	-7,375.84	7,372.92	0.00	0.00	0.00
15,900.00	89.86	270.12	7,253.00	-1,389.94	-7,475.84	7,472.92	0.00	0.00	0.00
16,000.00	89.86	270.12	7,253.25	-1,389.73	-7,575.84	7,572.92	0.00	0.00	0.00
16,100.00	89.86	270.12	7,253.49	-1,389.52	-7,675.84	7,672.91	0.00	0.00	0.00
16,200.00	89.86	270.12	7,253.74	-1,389.31	-7,775.84	7,772.91	0.00	0.00	0.00
16,300.00	89.86	270.12	7,253.99	-1,389.10	-7,875.84	7,872.91	0.00	0.00	0.00
16,400.00	89.86	270.12	7,254.24	-1,388.88	-7,975.84	7,972.91	0.00	0.00	0.00
16,500.00	89.86	270.12	7,254.49	-1,388.67	-8,075.84	8,072.91	0.00	0.00	0.00
16,600.00	89.86	270.12	7,254.74	-1,388.46	-8,175.84	8,172.91	0.00	0.00	0.00
16,700.00	89.86	270.12	7,254.99	-1,388.25	-8,275.84	8,272.91	0.00	0.00	0.00
16,800.00	89.86	270.12	7,255.24	-1,388.04	-8,375.84	8,372.91	0.00	0.00	0.00
16,900.00	89.86	270.12	7,255.48	-1,387.83	-8,475.84	8,472.91	0.00	0.00	0.00
17,000.00	89.86	270.12	7,255.73	-1,387.61	-8,575.84	8,572.91	0.00	0.00	0.00
17,100.00	89.86	270.12	7,255.98	-1,387.40	-8,675.84	8,672.91	0.00	0.00	0.00
17,200.00	89.86	270.12	7,256.23	-1,387.19	-8,775.84	8,772.91	0.00	0.00	0.00
17,300.00	89.86	270.12	7,256.48	-1,386.98	-8,875.84	8,872.91	0.00	0.00	0.00
17,400.00	89.86	270.12	7,256.73	-1,386.77	-8,975.83	8,972.91	0.00	0.00	0.00
17,500.00	89.86	270.12	7,256.98	-1,386.56	-9,075.83	9,072.91	0.00	0.00	0.00
17,600.00	89.86	270.12	7,257.22	-1,386.34	-9,175.83	9,172.91	0.00	0.00	0.00
17,700.00	89.86	270.12	7,257.47	-1,386.13	-9,275.83	9,272.91	0.00	0.00	0.00
17,800.00	89.86	270.12	7,257.72	-1,385.92	-9,375.83	9,372.91	0.00	0.00	0.00
17,900.00	89.86	270.12	7,257.97	-1,385.71	-9,475.83	9,472.91	0.00	0.00	0.00
18,000.00	89.86	270.12	7,258.22	-1,385.50	-9,575.83	9,572.91	0.00	0.00	0.00
18,100.00	89.86	270.12	7,258.47	-1,385.29	-9,675.83	9,672.91	0.00	0.00	0.00
18,200.00	89.86	270.12	7,258.72	-1,385.07	-9,775.83	9,772.91	0.00	0.00	0.00
18,300.00	89.86	270.12	7,258.97	-1,384.86	-9,875.83	9,872.91	0.00	0.00	0.00
18,400.00	89.86	270.12	7,259.21	-1,384.65	-9,975.83	9,972.91	0.00	0.00	0.00
18,500.00	89.86	270.12	7,259.46	-1,384.44	-10,075.83	10,072.91	0.00	0.00	0.00
18,600.00	89.86	270.12	7,259.71	-1,384.23	-10,175.83	10,172.91	0.00	0.00	0.00
18,700.00	89.86	270.12	7,259.96	-1,384.01	-10,275.83	10,272.91	0.00	0.00	0.00
18,800.00	89.86	270.12	7,260.21	-1,383.80	-10,375.83	10,372.91	0.00	0.00	0.00
18,900.00	89.86	270.12	7,260.46	-1,383.59	-10,475.83	10,472.91	0.00	0.00	0.00
19,000.00	89.86	270.12	7,260.71	-1,383.38	-10,575.83	10,572.91	0.00	0.00	0.00
19,100.00	89.86	270.12	7,260.95	-1,383.17	-10,675.83	10,672.91	0.00	0.00	0.00
19,118.22	89.86	270.12	7,261.00	-1,383.13	-10,694.04	10,691.12	0.00	0.00	0.00
TD at 19118.22 - PBHL_Falken 34C-9-L(350' FSL & 300' FEL)									

Database:	EDM 5000.14 Single User Db	Local Co-ordinate Reference:	Well Falken 34C-9-L
Company:	Synergy Resources Corporation	TVD Reference:	GL 4810 & KB 20 @ 4830.00ft (ASSUMED)
Project:	SEC 12-13 T6N R66W	MD Reference:	GL 4810 & KB 20 @ 4830.00ft (ASSUMED)
Site:	Falken 9-11 PAD	North Reference:	True
Well:	Falken 34C-9-L	Survey Calculation Method:	Minimum Curvature
Wellbore:	OH		
Design:	Plan #1		

Design Targets									
Target Name	Dip Angle	Dip Dir.	TVD	+N/-S	+E/-W	Northing	Easting	Latitude	Longitude
- hit/miss target	(°)	(°)	(ft)	(ft)	(ft)	(ft)	(ft)		
- Shape									
TOP_Falken 34C-9-L(30	0.00	0.00	7,233.00	-1,452.84	565.41	1,424,601.08	3,213,062.44	40.4963970	-104.7339170
- plan misses target center by 45.87ft at 7858.69ft MD (7233.00 TVD, -1406.97 N, 565.42 E)									
- Point									
PBHL_Falken 34C-9-L(3	0.00	0.00	7,261.00	-1,383.13	-10,694.04	1,424,573.78	3,201,802.80	40.4965820	-104.7744020
- plan hits target center									
- Point									

Casing Points					
Measured Depth	Vertical Depth	Name		Casing Diameter	Hole Diameter
(ft)	(ft)			(in)	(in)
1,789.13	1,750.00	9 5/8"		9.625	13.500

Plan Annotations				
Measured Depth	Vertical Depth	Local Coordinates		Comment
(ft)	(ft)	+N/-S (ft)	+E/-W (ft)	
300.00	300.00	0.00	0.00	Start Build 2.00
1,131.50	1,119.87	-86.77	82.63	Start 5601.98 hold at 1131.50 MD
6,733.48	6,487.54	-1,247.79	1,188.25	Start DLS 9.00 TFO 132.53
7,858.69	7,233.00	-1,406.97	565.42	LP(346 FSL 300 FWL)
19,118.22	7,261.00	-1,383.13	-10,694.04	TD at 19118.22