



May 30, 2017

Mr. Matt Lepore, Director
Colorado Oil and Gas Conservation Commission
1120 Lincoln Street, Suite 801
Denver, CO 80203

RE: COGCC Rule 318A.e.: Proposed Wellbore Spacing Unit

Falken 33C-9-L
6N-66W Sec 9: E/2SE/4, Sec 10: S/2, Sec 11: S/2, Sec 12: W/2SW/4
804.14 Acres

Dear Mr. Lepore,

Synergy Resources Corporation (Synergy) is planning to drill the above referenced well in accordance with the provisions set out in COGCC Rule 318A.e. Synergy's proposed wellbore spacing unit consists of:

Falken 33C-9-L
6N-66W Sec 9: E/2SE/4, Sec 10: S/2, Sec 11: S/2, Sec 12: W/2SW/4
804.14 Acres

Synergy is not the only owner within the proposed wellbore spacing unit and hereby certifies to the Director that a thirty day (30-day) notice has been given by certified mail to all owners in the proposed wellbore spacing unit, as required by COGCC Rule 318A.e. (6). Copies of the required notification letters are on file at Synergy's office. The required thirty (30) day notice period has elapsed absent the receipt by Synergy of any objection to their proposal by the owner(s) within the proposed spacing unit for the subject well. We have not received any objections to such well location or proposed spacing unit, therefore, Synergy Resources hereby requests the Director to approve the well.

Enclosed is the Proposed Spacing Unit Plat to assist in your review and approval of Synergy's proposed Application for Permit to Drill (APD) for Falken 33C-9-L well. Synergy respectfully requests the COGCC to review the enclosed information and approve the exception location waiver request per Surface Use Agreement and APD for Falken 33C-9-L.

Thank you,

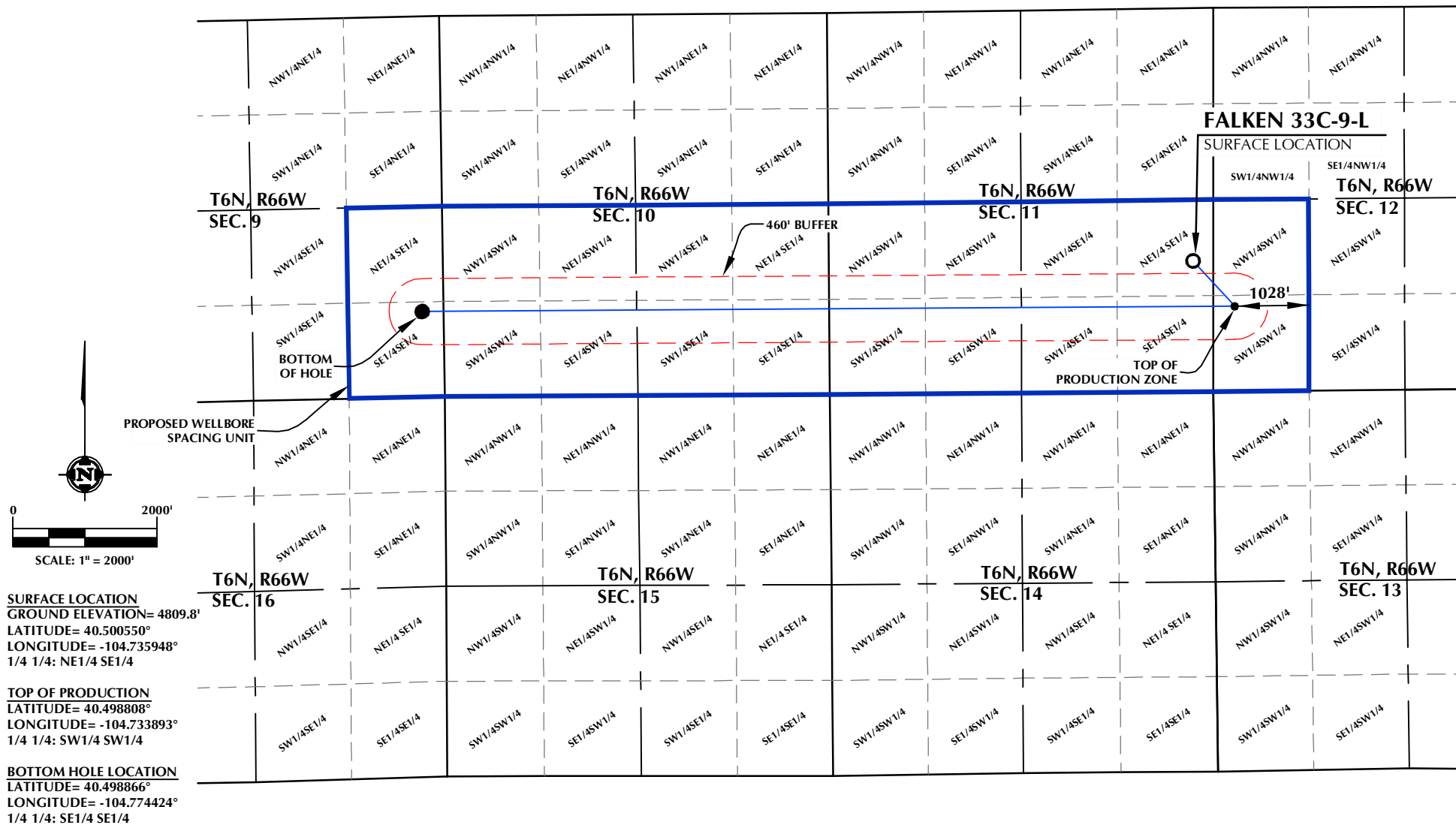
Erin Ekblad

Erin Ekblad
Manager of Regulatory Affairs
Synergy Resources Corporation

Attachment: Proposed Spacing Unit Plat

DISTANCE FROM COMPLETED
PORTION OF WELLBORE TO
NEAREST UNIT BOUNDARY= 1028'

FALKEN 33C-9-L WELLBORE SPACING UNIT



SURFACE LOCATION
GROUND ELEVATION= 4809.8'
LATITUDE= 40.500550°
LONGITUDE= -104.735948°
1/4 1/4: NE1/4 SE1/4

TOP OF PRODUCTION
LATITUDE= 40.498808°
LONGITUDE= -104.733893°
1/4 1/4: SW1/4 SW1/4

BOTTOM HOLE LOCATION
LATITUDE= 40.498866°
LONGITUDE= -104.774424°
1/4 1/4: SE1/4 SE1/4

WELL PAD - FALKEN 9-11 PAD

FALKEN 33C-9-L
WELLBORE SPACING UNIT
1814' FSL & 276' FEL NESE (SURFACE)
LOCATED IN SECTION 11
1179' FSL & 300' FWL SWSW (TOP OF PRODUCTION)
LOCATED IN SECTION 12
1182' FSL & 300' FEL SESE (BOTTOM)
LOCATED IN SECTION 9
T6N, R66W, 6TH P.M.
WELD COUNTY, COLORADO



SRC ENERGY

1675 Broadway, Suite 2600
Denver, Colorado 80202



CONSULTING, LLC

SHERIDAN OFFICE
1095 Saberton Avenue
Sheridan, Wyoming 82801
Phone 307-674-0609

LOVELAND OFFICE
1635 Foxtrail Drive, Suite 204
Loveland, Colorado 80538
Phone 970-776-4331

DRAFTED BY:

LMO

DATE DRAFTED:

4/14/17

REVISED:

CHECKED BY:

JRS

DATE SURVEYED:

4/3/17

FILE NAME:

17-26

NOTES:

1. DRAWING LATITUDE AND LONGITUDE COORDINATES ARE NAD 83 (2011)(EPOCH:2010)
2. ELEVATION BASED ON NAVD88 (GEOID12B)
3. BASIS OF BEARING DERIVED FROM COLORADO COORDINATE SYSTEM OF 1983 NORTH ZONE.
4. ALL MEASURED DISTANCES ARE GRID.
COMBINED SCALE FACTOR: .99973891 CALCULATED FROM THE SW. CORNER OF SECTION 11, T6N, R66W