

# Synergy Resources

Well Name: **SRC Eberle 14-32-31NHZM**

Surface Location: SRC Eberle 14-32-31CHZM Pad Sec.32-T1N-R66W  
North American Datum 1983 , US State Plane 1983 , Colorado Northern Zone

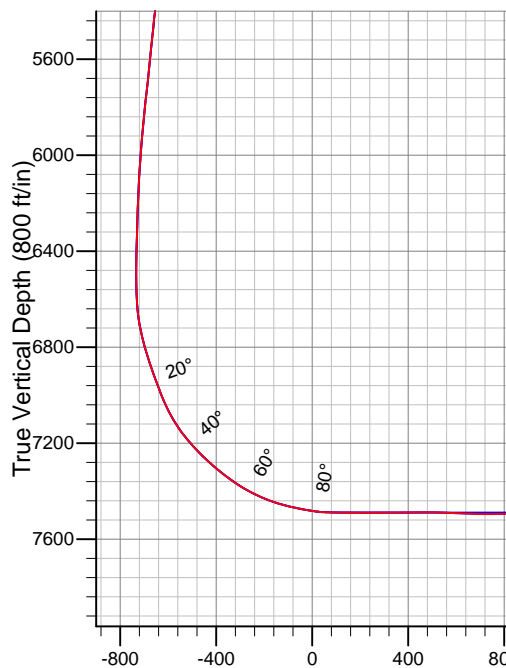
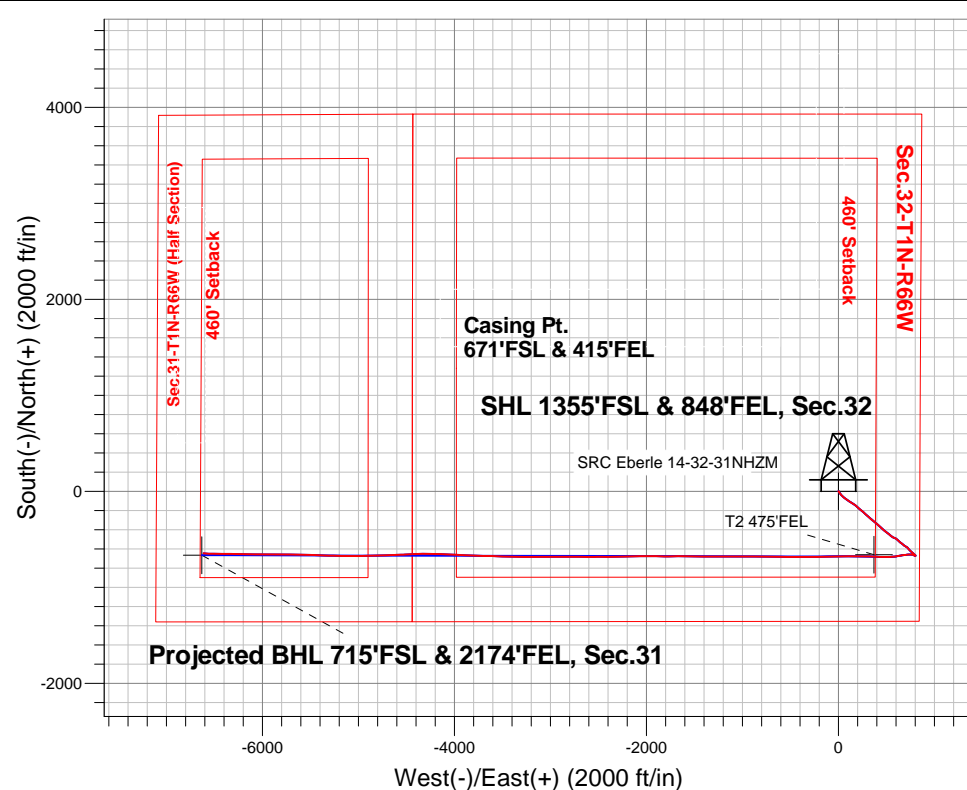
Ground Elevation: 5033.0

+N/-S	+E/-W	Northing	Easting	Latitude	Longitude	Slot
0.0	0.0	1245146.45	3197623.03	40.004155	-104.794540	

Ensign Rig #134 - RKB - 13' WELL @ 5046.0ft (Ensign Rig #134 - RKB - 13')

## FINAL SURVEY

Projected Bottom Hole Location  
14630'MD 7496'TVD 646'S & 6615'W of SHL  
89.7 degree Incl @ 273.2 degree AZM



SRC Eberle 14-32-31CHZM Pad Sec.32-T1N-R66W  
SRC Eberle 14-32-31NHZM  
Wellbore #1  
10:29, June 23 2014

### ANNOTATIONS

No annotation data is available.

### LEGEND

- SRC Eberle 14-32-31NHZM, Wellbore #1, Plan #5 (6-02-14) V0
- Wellbore #1
- Survey #1

Projected BHL 715'FSL & 2174'FEL, Sec.31

Vertical Section at 264.27° (800 ft/in)



## **Synergy Resources**

**SEC.32-T1N-R66W**

**SRC Eberle 14-32-31CHZM Pad Sec.32-T1N-R66W**

**SRC Eberle 14-32-31NHZM**

**Wellbore #1**

**Survey: Survey #1**

## **Standard Survey Report**

**23 June, 2014**



<b>Company:</b>	Synergy Resources	<b>Local Co-ordinate Reference:</b>	Well SRC Eberle 14-32-31NHZM
<b>Project:</b>	SEC.32-T1N-R66W	<b>TVD Reference:</b>	WELL @ 5046.0ft (Ensign Rig #134 - RKB - 13')
<b>Site:</b>	SRC Eberle 14-32-31CHZM Pad Sec.32-T1N-R66W	<b>MD Reference:</b>	WELL @ 5046.0ft (Ensign Rig #134 - RKB - 13')
<b>Well:</b>	SRC Eberle 14-32-31NHZM	<b>North Reference:</b>	True
<b>Wellbore:</b>	Wellbore #1	<b>Survey Calculation Method:</b>	Minimum Curvature
<b>Design:</b>	Wellbore #1	<b>Database:</b>	Landmark

<b>Project</b>	SEC.32-T1N-R66W, Weld County, Colorado		
<b>Map System:</b>	US State Plane 1983	<b>System Datum:</b>	Mean Sea Level
<b>Geo Datum:</b>	North American Datum 1983		Using Well Reference Point
<b>Map Zone:</b>	Colorado Northern Zone		Using geodetic scale factor

Site	SRC Eberle 14-32-31CHZM Pad Sec.32-T1N-R66W				
Site Position:		Northing:	1,245,145.79 ft	Latitude:	40.004155
From:	Lat/Long	Easting:	3,197,534.23 ft	Longitude:	-104.794857
Position Uncertainty:	0.0 ft	Slot Radius:	"	Grid Convergence:	0.46 °

Well	SRC Eberle 14-32-31NHZM					
Well Position	+N-S	0.0 ft	Northing:	1,245,146.45 ft	Latitude:	40.004155
	+E-W	0.0 ft	Easting:	3,197,623.03 ft	Longitude:	-104.794540
Position Uncertainty		0.0 ft	Wellhead Elevation:	ft	Ground Level:	5,033.0 ft

<b>Wellbore</b>	Wellbore #1				
<b>Magnetics</b>	<b>Model Name</b>	<b>Sample Date</b>	<b>Declination (°)</b>	<b>Dip Angle (°)</b>	<b>Field Strength (nT)</b>
	IGRF2010	5/23/2014	8.45	66.62	52,609

<b>Design</b>	Wellbore #1				
<b>Audit Notes:</b>					
<b>Version:</b>	1.0	<b>Phase:</b>	ACTUAL	<b>Tie On Depth:</b>	0.0
<b>Vertical Section:</b>	<b>Depth From (TVD) (ft)</b>	<b>+N/-S (ft)</b>	<b>+E/-W (ft)</b>	<b>Direction (°)</b>	
	0.0	0.0	0.0	264.27	

<b>Survey Program</b>	<b>Date</b>	6/11/2014			
<b>From (ft)</b>	<b>To (ft)</b>	<b>Survey (Wellbore)</b>	<b>Tool Name</b>	<b>Description</b>	
168.0	14,630.0	Survey #1 (Wellbore #1)	MWD	MWD - Standard	

<b>Survey</b>										
<b>Measured Depth (ft)</b>	<b>Inclination (°)</b>	<b>Azimuth (°)</b>	<b>Vertical Depth (ft)</b>	<b>+N/-S (ft)</b>	<b>+E/-W (ft)</b>	<b>Vertical Section (ft)</b>	<b>Dogleg Rate (°/100ft)</b>	<b>Build Rate (°/100ft)</b>	<b>Turn Rate (°/100ft)</b>	
0.0	0.00	0.00	0.0	0.0	0.0	0.0	0.00	0.00	0.00	
1.0	0.00	102.70	1.0	0.0	0.0	0.0	0.42	0.42	0.00	
<b>SHL 1355'FSL &amp; 848'FEL, Sec.32</b>										
4.1	0.02	102.70	4.1	0.0	0.0	0.0	0.42	0.42	0.00	
<b>T2 475'FEL</b>										
168.0	0.70	102.70	168.0	-0.2	1.0	-1.0	0.42	0.42	0.00	
261.0	1.50	136.60	261.0	-1.2	2.4	-2.3	1.07	0.86	36.45	
353.0	2.80	145.20	352.9	-4.0	4.5	-4.1	1.45	1.41	9.35	
446.0	4.00	148.20	445.7	-8.6	7.5	-6.6	1.30	1.29	3.23	
538.0	5.60	147.50	537.4	-15.1	11.6	-10.0	1.74	1.74	-0.76	
631.0	7.40	145.90	629.8	-23.9	17.4	-14.9	1.95	1.94	-1.72	
724.0	9.00	141.70	721.9	-34.5	25.3	-21.7	1.84	1.72	-4.52	

<b>Company:</b>	Synergy Resources	<b>Local Co-ordinate Reference:</b>	Well SRC Eberle 14-32-31NHZM
<b>Project:</b>	SEC.32-T1N-R66W	<b>TVD Reference:</b>	WELL @ 5046.0ft (Ensign Rig #134 - RKB - 13')
<b>Site:</b>	SRC Eberle 14-32-31CHZM Pad Sec.32-T1N-R66W	<b>MD Reference:</b>	WELL @ 5046.0ft (Ensign Rig #134 - RKB - 13')
<b>Well:</b>	SRC Eberle 14-32-31NHZM	<b>North Reference:</b>	True
<b>Wellbore:</b>	Wellbore #1	<b>Survey Calculation Method:</b>	Minimum Curvature
<b>Design:</b>	Wellbore #1	<b>Database:</b>	Landmark

Survey									
Measured Depth (ft)	Inclination (°)	Azimuth (°)	Vertical Depth (ft)	+N/-S (ft)	+E/-W (ft)	Vertical Section (ft)	Dogleg Rate (°/100ft)	Build Rate (°/100ft)	Turn Rate (°/100ft)
816.0	10.50	134.50	812.5	-46.1	35.7	-30.9	2.10	1.63	-7.83
909.0	11.60	129.40	903.8	-57.9	49.0	-43.0	1.58	1.18	-5.48
1,001.0	12.80	129.00	993.7	-70.2	64.1	-56.7	1.31	1.30	-0.43
1,094.0	14.00	126.80	1,084.2	-83.5	81.1	-72.3	1.40	1.29	-2.37
1,187.0	14.20	124.50	1,174.4	-96.7	99.5	-89.3	0.64	0.22	-2.47
1,279.0	12.70	122.40	1,263.9	-108.5	117.3	-105.9	1.71	-1.63	-2.28
1,385.0	10.80	120.60	1,367.7	-119.8	135.7	-123.1	1.83	-1.79	-1.70
1,465.0	10.30	118.50	1,446.3	-127.0	148.4	-135.0	0.79	-0.63	-2.63
1,557.0	10.00	126.90	1,536.9	-135.7	162.1	-147.7	1.64	-0.33	9.13
1,650.0	10.10	130.30	1,628.4	-145.8	174.7	-159.3	0.65	0.11	3.66
1,742.0	10.60	130.10	1,718.9	-156.5	187.4	-170.8	0.54	0.54	-0.22
1,835.0	11.30	132.40	1,810.2	-168.2	200.6	-182.8	0.89	0.75	2.47
1,930.0	11.20	130.10	1,903.4	-180.4	214.6	-195.5	0.48	-0.11	-2.42
2,025.0	10.70	129.60	1,996.7	-191.9	228.4	-208.1	0.54	-0.53	-0.53
2,121.0	10.70	128.50	2,091.0	-203.2	242.3	-220.8	0.21	0.00	-1.15
2,216.0	10.00	132.00	2,184.5	-214.2	255.3	-232.6	0.99	-0.74	3.68
2,311.0	9.20	135.40	2,278.1	-225.1	266.7	-242.9	1.03	-0.84	3.58
2,407.0	9.40	131.30	2,372.9	-235.7	278.0	-253.1	0.72	0.21	-4.27
2,502.0	8.80	129.70	2,466.7	-245.5	289.4	-263.5	0.69	-0.63	-1.68
2,597.0	9.50	133.60	2,560.5	-255.6	300.7	-273.7	0.98	0.74	4.11
2,692.0	9.10	130.30	2,654.2	-265.8	312.1	-284.0	0.70	-0.42	-3.47
2,788.0	9.80	129.40	2,748.9	-275.9	324.2	-295.1	0.75	0.73	-0.94
2,883.0	9.70	132.00	2,842.6	-286.4	336.4	-306.2	0.48	-0.11	2.74
2,978.0	9.00	127.10	2,936.3	-296.2	348.3	-317.0	1.12	-0.74	-5.16
3,074.0	9.20	135.50	3,031.1	-306.2	359.7	-327.3	1.40	0.21	8.75
3,169.0	9.70	126.80	3,124.8	-316.5	371.4	-338.0	1.59	0.53	-9.16
3,264.0	9.10	130.60	3,218.5	-326.1	383.5	-349.0	0.91	-0.63	4.00
3,359.0	9.30	128.20	3,312.3	-335.8	395.2	-359.8	0.46	0.21	-2.53
3,455.0	8.40	132.40	3,407.2	-345.3	406.5	-370.0	1.15	-0.94	4.38
3,550.0	9.80	129.40	3,501.0	-355.1	417.9	-380.4	1.56	1.47	-3.16
3,645.0	10.20	130.80	3,594.5	-365.7	430.5	-391.9	0.49	0.42	1.47
3,740.0	10.50	135.00	3,688.0	-377.4	443.0	-403.1	0.85	0.32	4.42
3,835.0	9.60	132.60	3,781.5	-388.8	454.9	-413.9	1.04	-0.95	-2.53
3,931.0	9.80	133.60	3,876.2	-399.9	466.8	-424.5	0.27	0.21	1.04
4,026.0	10.60	128.00	3,969.7	-410.8	479.5	-436.1	1.34	0.84	-5.89
4,121.0	9.60	129.40	4,063.2	-421.3	492.5	-448.0	1.08	-1.05	1.47
4,217.0	10.00	128.00	4,157.8	-431.5	505.3	-459.7	0.48	0.42	-1.46
4,312.0	10.00	125.50	4,251.3	-441.3	518.5	-471.8	0.46	0.00	-2.63
4,407.0	9.70	131.30	4,344.9	-451.4	531.2	-483.5	1.09	-0.32	6.11
4,502.0	10.60	128.00	4,438.5	-462.1	544.1	-495.3	1.13	0.95	-3.47
4,598.0	13.00	123.20	4,532.4	-473.4	560.1	-510.0	2.70	2.50	-5.00
4,693.0	12.40	114.80	4,625.1	-483.6	578.3	-527.1	2.04	-0.63	-8.84
4,788.0	12.30	117.40	4,717.9	-492.5	596.5	-544.4	0.59	-0.11	2.74
4,883.0	11.80	131.80	4,810.8	-503.6	612.8	-559.4	3.20	-0.53	15.16
4,979.0	13.10	132.70	4,904.6	-517.5	628.1	-573.3	1.37	1.35	0.94
5,074.0	13.50	131.30	4,997.0	-532.2	644.3	-588.0	0.54	0.42	-1.47
5,169.0	13.80	129.60	5,089.3	-546.7	661.4	-603.5	0.53	0.32	-1.79
5,264.0	13.10	127.80	5,181.7	-560.5	678.6	-619.3	0.86	-0.74	-1.89
5,359.0	11.20	119.40	5,274.6	-571.7	695.2	-634.6	2.73	-2.00	-8.84
5,455.0	11.00	123.80	5,368.8	-581.3	710.9	-649.3	0.91	-0.21	4.58
5,550.0	9.80	137.80	5,462.3	-592.4	723.9	-661.1	2.94	-1.26	14.74
5,645.0	10.10	141.20	5,555.8	-604.8	734.5	-670.5	0.69	0.32	3.58
5,741.0	10.40	137.60	5,650.3	-617.8	745.6	-680.3	0.74	0.31	-3.75

<b>Company:</b>	Synergy Resources	<b>Local Co-ordinate Reference:</b>	Well SRC Eberle 14-32-31NHZM
<b>Project:</b>	SEC.32-T1N-R66W	<b>TVD Reference:</b>	WELL @ 5046.0ft (Ensign Rig #134 - RKB - 13')
<b>Site:</b>	SRC Eberle 14-32-31CHZM Pad Sec.32-T1N-R66W	<b>MD Reference:</b>	WELL @ 5046.0ft (Ensign Rig #134 - RKB - 13')
<b>Well:</b>	SRC Eberle 14-32-31NHZM	<b>North Reference:</b>	True
<b>Wellbore:</b>	Wellbore #1	<b>Survey Calculation Method:</b>	Minimum Curvature
<b>Design:</b>	Wellbore #1	<b>Database:</b>	Landmark

Survey									
Measured Depth (ft)	Inclination (°)	Azimuth (°)	Vertical Depth (ft)	+N/-S (ft)	+E/-W (ft)	Vertical Section (ft)	Dogleg Rate (°/100ft)	Build Rate (°/100ft)	Turn Rate (°/100ft)
5,836.0	9.30	129.20	5,743.9	-629.0	757.4	-690.8	1.90	-1.16	-8.84
5,931.0	7.60	130.80	5,837.9	-637.9	768.1	-700.6	1.81	-1.79	1.68
6,026.0	7.60	131.10	5,932.0	-646.2	777.6	-709.2	0.04	0.00	0.32
6,122.0	5.50	132.00	6,027.4	-653.4	785.8	-716.6	2.19	-2.19	0.94
6,217.0	4.00	132.60	6,122.1	-658.7	791.6	-721.9	1.58	-1.58	0.63
6,312.0	3.20	125.70	6,216.9	-662.5	796.2	-726.1	0.96	-0.84	-7.26
6,408.0	2.10	124.60	6,312.8	-665.1	799.8	-729.4	1.15	-1.15	-1.15
6,503.0	2.10	123.90	6,407.7	-667.0	802.7	-732.1	0.03	0.00	-0.74
6,598.0	1.80	197.10	6,502.7	-669.4	803.7	-732.9	2.46	-0.32	77.05
6,688.0	2.60	231.20	6,592.6	-672.1	801.7	-730.6	1.67	0.89	37.89
6,736.0	5.80	295.30	6,640.5	-671.7	798.6	-727.6	10.87	6.67	133.54
6,783.0	10.30	295.10	6,687.0	-668.9	792.7	-722.0	9.57	9.57	-0.43
6,831.0	14.10	296.70	6,733.9	-664.5	783.6	-713.3	7.95	7.92	3.33
6,878.0	15.20	285.10	6,779.4	-660.3	772.5	-702.7	6.65	2.34	-24.68
6,926.0	17.80	277.40	6,825.4	-657.7	759.1	-689.7	7.07	5.42	-16.04
6,974.0	18.40	268.60	6,871.1	-656.9	744.3	-675.0	5.83	1.25	-18.33
7,022.0	20.00	261.90	6,916.4	-658.3	728.6	-659.3	5.67	3.33	-13.96
7,069.0	20.40	260.50	6,960.5	-660.8	712.6	-643.1	1.33	0.85	-2.98
7,117.0	21.90	265.60	7,005.3	-662.8	695.4	-625.8	4.94	3.13	10.63
7,164.0	25.40	264.00	7,048.3	-664.6	676.6	-606.9	7.57	7.45	-3.40
7,211.0	29.50	261.60	7,090.0	-667.3	655.1	-585.3	9.03	8.72	-5.11
7,260.0	33.40	257.90	7,131.8	-671.9	630.0	-559.8	8.88	7.96	-7.55
7,308.0	38.20	261.00	7,170.8	-677.0	602.4	-531.8	10.69	10.00	6.46
7,355.0	42.70	264.90	7,206.5	-680.7	572.1	-501.4	10.98	9.57	8.30
7,403.0	44.60	267.70	7,241.3	-682.8	539.1	-468.3	5.65	3.96	5.83
7,450.0	46.80	268.80	7,274.1	-683.8	505.5	-434.7	4.97	4.68	2.34
7,498.0	50.00	270.50	7,305.9	-684.0	469.6	-399.0	7.17	6.67	3.54
7,545.0	52.70	270.90	7,335.3	-683.6	432.9	-362.5	5.78	5.74	0.85
7,593.0	55.70	272.30	7,363.4	-682.5	394.0	-323.9	6.68	6.25	2.92
7,641.0	60.20	272.30	7,388.8	-680.8	353.3	-283.6	9.38	9.38	0.00
7,689.0	63.90	271.20	7,411.3	-679.6	311.0	-241.6	7.97	7.71	-2.29
7,736.0	67.10	270.50	7,430.8	-678.9	268.2	-199.1	6.94	6.81	-1.49
7,784.0	72.00	270.20	7,447.6	-678.7	223.2	-154.4	10.23	10.21	-0.63
7,831.0	76.60	271.20	7,460.3	-678.1	178.0	-109.4	10.00	9.79	2.13
7,879.0	78.40	272.10	7,470.7	-676.7	131.2	-63.0	4.17	3.75	1.88
7,926.0	79.70	270.90	7,479.6	-675.5	85.0	-17.2	3.73	2.77	-2.55
7,970.0	83.80	269.00	7,485.9	-675.6	41.5	26.1	10.25	9.32	-4.32
8,017.0	89.30	268.30	7,488.8	-676.7	-5.4	72.9	11.80	11.70	-1.49
8,064.0	88.40	266.30	7,489.7	-678.9	-52.3	119.8	4.67	-1.91	-4.26
8,112.0	89.70	268.10	7,490.5	-681.2	-100.2	167.7	4.63	2.71	3.75
8,159.0	90.60	269.10	7,490.4	-682.4	-147.2	214.6	2.86	1.91	2.13
8,207.0	90.00	268.60	7,490.1	-683.4	-195.2	262.4	1.63	-1.25	-1.04
8,255.0	90.00	269.00	7,490.1	-684.4	-243.2	310.3	0.83	0.00	0.83
8,303.0	90.80	269.00	7,489.8	-685.2	-291.2	358.1	1.67	1.67	0.00
8,350.0	91.00	270.70	7,489.0	-685.3	-338.2	404.9	3.64	0.43	3.62
8,398.0	90.70	270.40	7,488.3	-684.9	-386.2	452.6	0.88	-0.63	-0.63
8,445.0	89.00	270.20	7,488.5	-684.6	-433.2	499.3	3.64	-3.62	-0.43
8,493.0	87.80	270.50	7,489.8	-684.3	-481.2	547.0	2.58	-2.50	0.63
8,540.0	87.80	271.20	7,491.6	-683.6	-528.1	593.7	1.49	0.00	1.49
8,635.0	88.40	272.10	7,494.8	-680.9	-623.0	687.9	1.14	0.63	0.95
8,731.0	91.50	270.70	7,494.8	-678.5	-719.0	783.1	3.54	3.23	-1.46
8,826.0	91.50	269.30	7,492.3	-678.5	-813.9	877.6	1.47	0.00	-1.47
8,921.0	90.40	269.00	7,490.8	-680.0	-908.9	972.2	1.20	-1.16	-0.32

<b>Company:</b>	Synergy Resources	<b>Local Co-ordinate Reference:</b>	Well SRC Eberle 14-32-31NHZM
<b>Project:</b>	SEC.32-T1N-R66W	<b>TVD Reference:</b>	WELL @ 5046.0ft (Ensign Rig #134 - RKB - 13')
<b>Site:</b>	SRC Eberle 14-32-31CHZM Pad Sec.32-T1N-R66W	<b>MD Reference:</b>	WELL @ 5046.0ft (Ensign Rig #134 - RKB - 13')
<b>Well:</b>	SRC Eberle 14-32-31NHZM	<b>North Reference:</b>	True
<b>Wellbore:</b>	Wellbore #1	<b>Survey Calculation Method:</b>	Minimum Curvature
<b>Design:</b>	Wellbore #1	<b>Database:</b>	Landmark

Survey									
Measured Depth (ft)	Inclination (°)	Azimuth (°)	Vertical Depth (ft)	+N/-S (ft)	+E/-W (ft)	Vertical Section (ft)	Dogleg Rate (°/100ft)	Build Rate (°/100ft)	Turn Rate (°/100ft)
9,016.0	89.30	269.80	7,491.0	-681.0	-1,003.9	1,066.9	1.43	-1.16	0.84
9,112.0	89.20	270.40	7,492.3	-680.8	-1,099.9	1,162.4	0.63	-0.10	0.63
9,207.0	89.10	270.50	7,493.7	-680.0	-1,194.9	1,256.8	0.15	-0.11	0.11
9,302.0	88.40	271.20	7,495.8	-678.6	-1,289.9	1,351.1	1.04	-0.74	0.74
9,397.0	89.90	270.40	7,497.2	-677.3	-1,384.8	1,445.5	1.79	1.58	-0.84
9,493.0	88.40	269.80	7,498.6	-677.1	-1,480.8	1,541.0	1.68	-1.56	-0.63
9,588.0	91.90	270.70	7,498.3	-676.7	-1,575.8	1,635.5	3.80	3.68	0.95
9,683.0	91.40	269.30	7,495.6	-676.7	-1,670.8	1,730.0	1.56	-0.53	-1.47
9,779.0	90.30	269.70	7,494.2	-677.6	-1,766.7	1,825.5	1.22	-1.15	0.42
9,874.0	90.70	270.90	7,493.4	-677.1	-1,861.7	1,920.0	1.33	0.42	1.26
9,969.0	90.70	271.60	7,492.2	-675.0	-1,956.7	2,014.3	0.74	0.00	0.74
10,064.0	90.30	268.10	7,491.4	-675.2	-2,051.7	2,108.8	3.71	-0.42	-3.68
10,160.0	89.60	267.70	7,491.5	-678.8	-2,147.6	2,204.6	0.84	-0.73	-0.42
10,255.0	89.70	269.10	7,492.0	-681.4	-2,242.6	2,299.4	1.48	0.11	1.47
10,341.0	90.30	271.10	7,492.0	-681.3	-2,328.6	2,384.9	2.43	0.70	2.33
10,436.0	89.80	270.00	7,491.9	-680.3	-2,423.6	2,479.4	1.27	-0.53	-1.16
10,532.0	89.50	267.90	7,492.5	-682.1	-2,519.5	2,575.0	2.21	-0.31	-2.19
10,627.0	90.00	271.20	7,493.0	-682.9	-2,614.5	2,669.6	3.51	0.53	3.47
10,722.0	88.70	270.20	7,494.0	-681.7	-2,709.5	2,764.0	1.73	-1.37	-1.05
10,817.0	90.10	270.00	7,495.0	-681.5	-2,804.5	2,858.5	1.49	1.47	-0.21
10,913.0	90.90	270.00	7,494.2	-681.5	-2,900.5	2,954.0	0.83	0.83	0.00
11,008.0	91.00	268.60	7,492.6	-682.7	-2,995.5	3,048.7	1.48	0.11	-1.47
11,103.0	89.90	270.20	7,491.9	-683.7	-3,090.5	3,143.3	2.04	-1.16	1.68
11,199.0	89.30	269.50	7,492.5	-683.9	-3,186.5	3,238.8	0.96	-0.63	-0.73
11,294.0	90.00	271.40	7,493.1	-683.2	-3,281.4	3,333.2	2.13	0.74	2.00
11,389.0	90.70	270.70	7,492.5	-681.4	-3,376.4	3,427.6	1.04	0.74	-0.74
11,484.0	89.70	272.30	7,492.2	-679.0	-3,471.4	3,521.8	1.99	-1.05	1.68
11,580.0	89.50	271.60	7,492.9	-675.7	-3,567.3	3,617.0	0.76	-0.21	-0.73
11,675.0	88.90	270.50	7,494.2	-673.9	-3,662.3	3,711.3	1.32	-0.63	-1.16
11,770.0	90.90	272.30	7,494.4	-671.6	-3,757.3	3,805.5	2.83	2.11	1.89
11,865.0	91.70	272.60	7,492.2	-667.6	-3,852.2	3,899.6	0.90	0.84	0.32
11,960.0	92.20	273.90	7,489.0	-662.2	-3,946.9	3,993.3	1.47	0.53	1.37
12,056.0	89.30	272.10	7,487.7	-657.2	-4,042.8	4,088.2	3.56	-3.02	-1.88
12,151.0	89.10	271.90	7,489.0	-653.8	-4,137.7	4,182.3	0.30	-0.21	-0.21
12,246.0	87.80	271.20	7,491.6	-651.3	-4,232.7	4,276.5	1.55	-1.37	-0.74
12,341.0	87.50	269.10	7,495.5	-651.0	-4,327.6	4,370.9	2.23	-0.32	-2.21
12,437.0	87.10	267.70	7,500.0	-653.7	-4,423.4	4,466.6	1.52	-0.42	-1.46
12,532.0	87.70	266.70	7,504.3	-658.3	-4,518.2	4,561.4	1.23	0.63	-1.05
12,627.0	93.60	269.00	7,503.3	-661.9	-4,613.1	4,656.1	6.67	6.21	2.42
12,723.0	92.30	267.70	7,498.3	-664.7	-4,708.9	4,751.7	1.91	-1.35	-1.35
12,818.0	89.60	267.20	7,496.8	-668.9	-4,803.8	4,846.6	2.89	-2.84	-0.53
12,913.0	89.50	267.70	7,497.5	-673.1	-4,898.7	4,941.4	0.54	-0.11	0.53
13,008.0	89.60	270.40	7,498.2	-674.7	-4,993.7	5,036.1	2.84	0.11	2.84
13,099.0	91.40	269.70	7,497.4	-674.6	-5,084.7	5,126.6	2.12	1.98	-0.77
13,188.0	93.10	271.80	7,494.0	-673.5	-5,173.6	5,215.0	3.03	1.91	2.36
13,277.0	93.10	271.80	7,489.1	-670.7	-5,262.4	5,303.1	0.00	0.00	0.00
13,366.0	91.80	273.00	7,485.3	-666.9	-5,351.2	5,391.1	1.99	-1.46	1.35
13,455.0	91.50	272.50	7,482.8	-662.7	-5,440.1	5,479.1	0.65	-0.34	-0.56
13,544.0	88.40	271.90	7,482.9	-659.3	-5,529.0	5,567.2	3.55	-3.48	-0.67
13,633.0	88.90	269.70	7,484.9	-658.0	-5,618.0	5,655.6	2.53	0.56	-2.47
13,722.0	87.80	269.00	7,487.5	-659.0	-5,706.9	5,744.2	1.46	-1.24	-0.79
13,811.0	89.30	270.20	7,489.8	-659.6	-5,795.9	5,832.8	2.16	1.69	1.35
13,900.0	88.40	270.90	7,491.6	-658.8	-5,884.9	5,921.3	1.28	-1.01	0.79

<b>Company:</b>	Synergy Resources	<b>Local Co-ordinate Reference:</b>	Well SRC Eberle 14-32-31NHZM
<b>Project:</b>	SEC.32-T1N-R66W	<b>TVD Reference:</b>	WELL @ 5046.0ft (Ensign Rig #134 - RKB - 13')
<b>Site:</b>	SRC Eberle 14-32-31CHZM Pad Sec.32-T1N-R66W	<b>MD Reference:</b>	WELL @ 5046.0ft (Ensign Rig #134 - RKB - 13')
<b>Well:</b>	SRC Eberle 14-32-31NHZM	<b>North Reference:</b>	True
<b>Wellbore:</b>	Wellbore #1	<b>Survey Calculation Method:</b>	Minimum Curvature
<b>Design:</b>	Wellbore #1	<b>Database:</b>	Landmark

Survey									
Measured Depth (ft)	Inclination (°)	Azimuth (°)	Vertical Depth (ft)	+N/-S (ft)	+E/-W (ft)	Vertical Section (ft)	Dogleg Rate (°/100ft)	Build Rate (°/100ft)	Turn Rate (°/100ft)
13,989.0	89.30	272.10	7,493.3	-656.5	-5,973.8	6,009.5	1.69	1.01	1.35
14,078.0	89.30	270.40	7,494.4	-654.5	-6,062.8	6,097.9	1.91	0.00	-1.91
14,167.0	91.90	270.90	7,493.5	-653.5	-6,151.8	6,186.3	2.97	2.92	0.56
14,256.0	89.60	270.00	7,492.3	-652.8	-6,240.8	6,274.8	2.78	-2.58	-1.01
14,345.0	89.30	270.20	7,493.2	-652.7	-6,329.8	6,363.3	0.41	-0.34	0.22
14,434.0	89.20	270.40	7,494.3	-652.2	-6,418.8	6,451.8	0.25	-0.11	0.22
14,524.0	89.40	271.40	7,495.4	-650.8	-6,508.7	6,541.2	1.13	0.22	1.11
14,573.0	89.70	273.20	7,495.8	-648.8	-6,557.7	6,589.7	3.72	0.61	3.67
14,630.0	89.70	273.20	7,496.1	-645.6	-6,614.6	6,646.0	0.00	0.00	0.00
BHL 695'FSL & 2193'FEL, Sec.31									

Checked By: \_\_\_\_\_ Approved By: \_\_\_\_\_ Date: \_\_\_\_\_