



Project: SEC 12-13 T6N R66W
Site: Falken 9-11 PAD
Well: Falken 30C-14-S
Wellbore: OH
Design: Plan #1

MD	Inc	Azi	TVD	+N/-S	+E/-W	Dleg	TFace	VSect	Target
0.00	0.00	0.00	0.00	0.00	0.00	0.00	0.00	0.00	
200.00	0.00	0.00	200.00	0.00	0.00	0.00	0.00	0.00	
1200.00	20.00	145.94	1179.82	-143.14	96.75	2.00	145.94	-95.04	
6869.92	20.00	145.94	6507.80	-1749.79	1182.69	0.00	0.00	-1161.84	
7985.49	89.54	269.32	7232.00	-1975.42	565.01	9.00	121.89	-541.53	
13555.88	89.54	269.32	7277.00	-2041.79	-5004.81	0.00	0.00	5028.69	PBHL_Falken 30C-14-S

PROJECT DETAILS: SEC 12-13 T6N R66W
Geodetic System: US State Plane 1983
Datum: North American Datum 1983
Ellipsoid: GRS 1980
Zone: Colorado Northern Zone
Colorado Northern Zone
System Datum: Mean Sea Level

DESIGN TARGET DETAILS

Name	TVD	+N/-S	+E/-W	Northing	Easting	Latitude	Longitude	Shape
TOP_Falken 30C-14-S	7232.00	-2067.79	565.14	1423941.34	3213067.58	40.4945860	-104.7339190	Point
- plan misses target center by 92.37ft at 7986.46ft MD (7232.01 TVD, -1975.43 N, 564.04 E)								
PBHL_Falken 30C-14-S	7277.00	-2041.79	-5004.81	1423919.35	3207497.61	40.4946560	-104.7539460	Point
- plan hits target center								

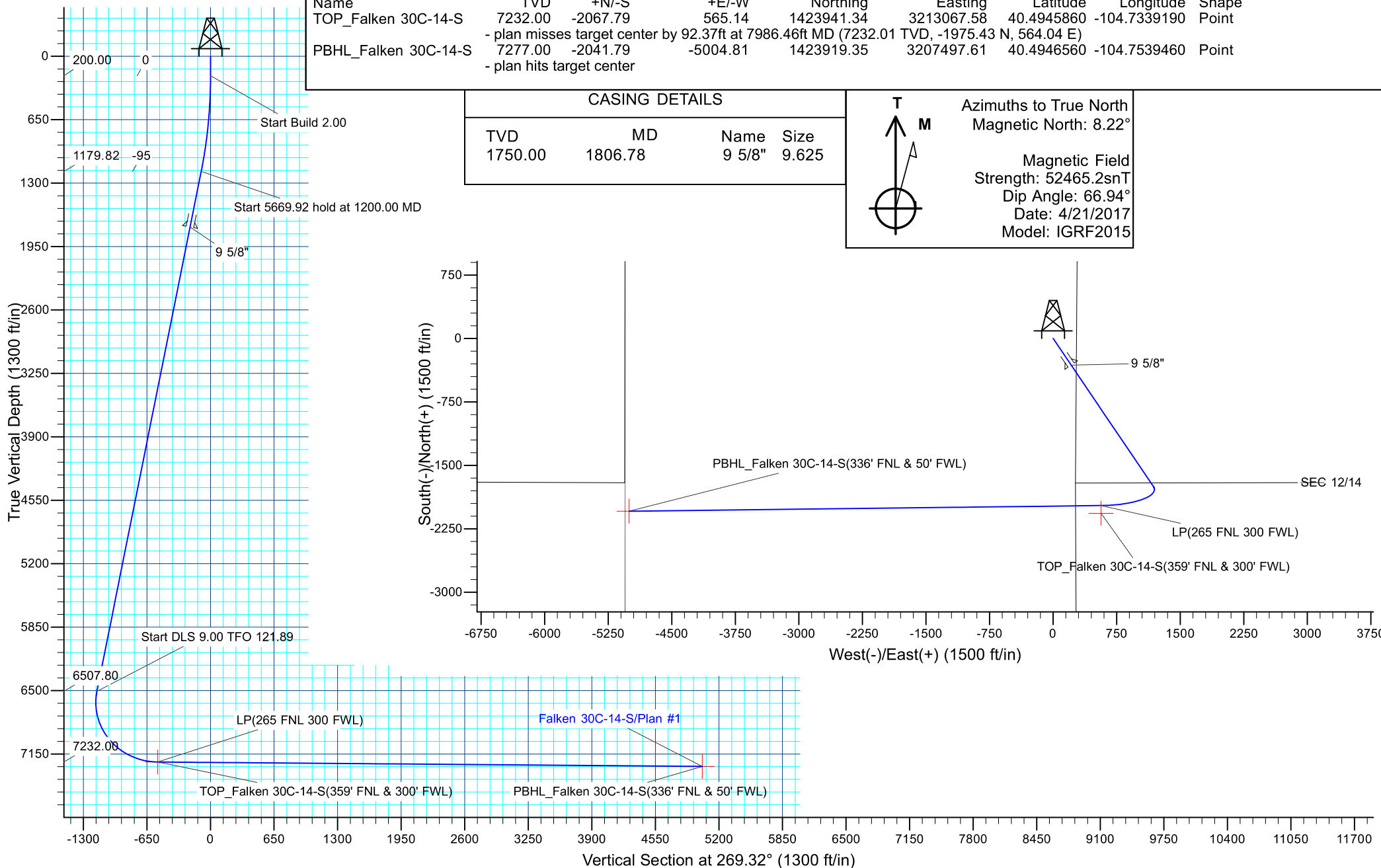
CASING DETAILS

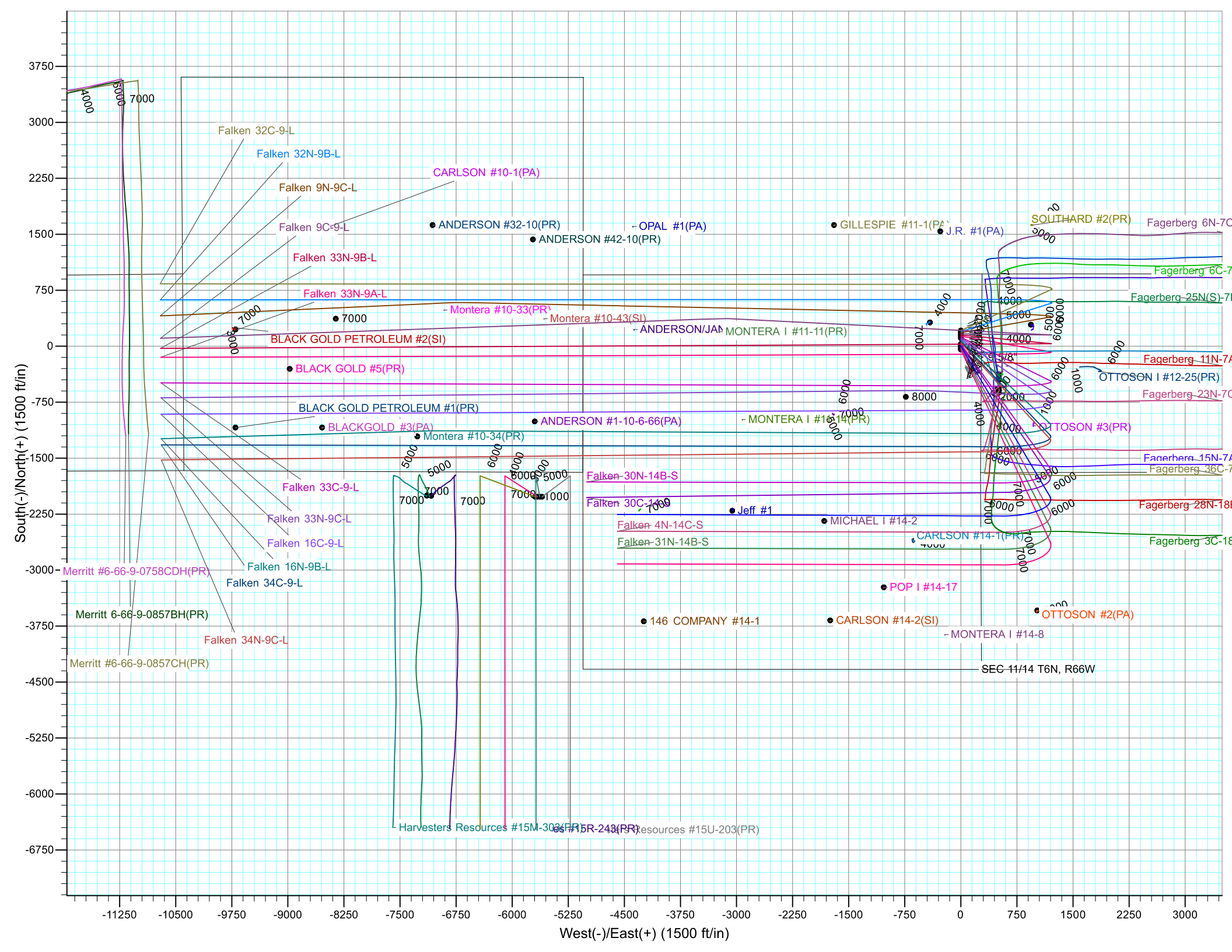
TVD	MD	Name	Size
1750.00	1806.78	9 5/8"	9.625

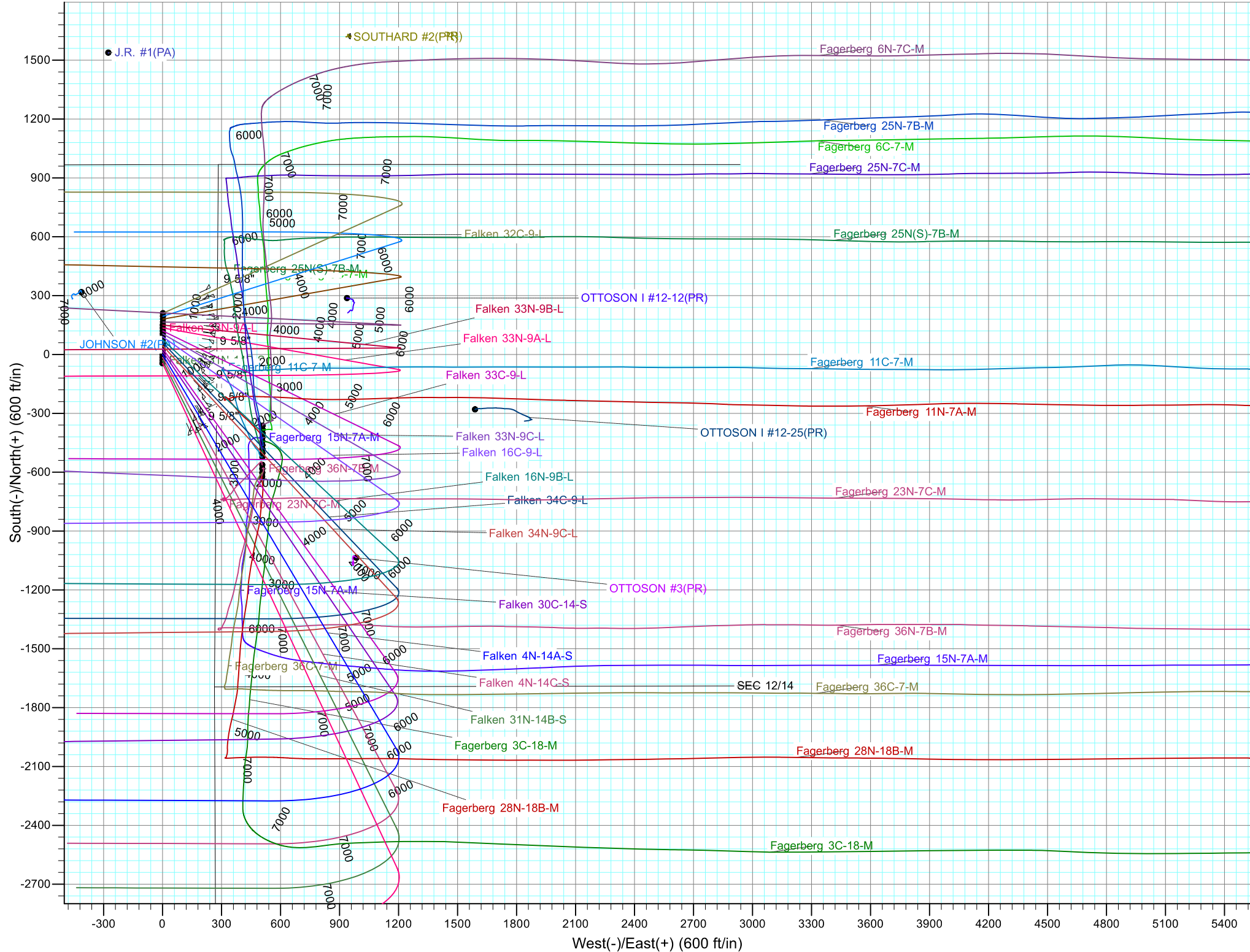


Azimuths to True North
Magnetic North: 8.22°

Magnetic Field
Strength: 52465.2snT
Dip Angle: 66.94°
Date: 4/21/2017
Model: IGRF2015









Synergy Resources Corporation

SEC 12-13 T6N R66W

Falken 9-11 PAD

Falken 30C-14-S

OH

Plan: Plan #1

Standard Planning Report

25 April, 2017



Database:	EDM 5000.14 Single User Db	Local Co-ordinate Reference:	Well Falken 30C-14-S
Company:	Synergy Resources Corporation	TVD Reference:	GL 4810 & KB 20 @ 4830.00ft (ASSUMED)
Project:	SEC 12-13 T6N R66W	MD Reference:	GL 4810 & KB 20 @ 4830.00ft (ASSUMED)
Site:	Falken 9-11 PAD	North Reference:	True
Well:	Falken 30C-14-S	Survey Calculation Method:	Minimum Curvature
Wellbore:	OH		
Design:	Plan #1		

Project	SEC 12-13 T6N R66W		
Map System:	US State Plane 1983	System Datum:	Mean Sea Level
Geo Datum:	North American Datum 1983		
Map Zone:	Colorado Northern Zone		

Site	Falken 9-11 PAD			
Site Position:		Northing:	1,426,199.10 ft	Latitude: 40.5007970
From:	Lat/Long	Easting:	3,212,484.63 ft	Longitude: -104.7359450
Position Uncertainty:	3.28 ft	Slot Radius:	13.200 in	Grid Convergence: 0.49 °

Well	Falken 30C-14-S, 1709' FSL & 276' FEL			
Well Position	+N/-S	-194.91 ft	Northing:	1,426,004.19 ft
	+E/-W	-1.67 ft	Easting:	3,212,484.64 ft
Position Uncertainty		3.28 ft	Wellhead Elevation:	Ground Level: 4,810.00 ft

Wellbore	OH				
Magnetics	Model Name	Sample Date	Declination (°)	Dip Angle (°)	Field Strength (nT)
	IGRF2015	4/21/2017	8.22	66.94	52,465

Design	Plan #1			
Audit Notes:				
Version:	Phase:	PLAN	Tie On Depth:	0.00
Vertical Section:	Depth From (TVD) (ft)	+N/-S (ft)	+E/-W (ft)	Direction (°)
	0.00	0.00	0.00	269.32

Plan Survey Tool Program	Date	4/24/2017		
Depth From (ft)	Depth To (ft)	Survey (Wellbore)	Tool Name	Remarks
1	0.00	13,555.54 Plan #1 (OH)	MWD+IFR1	
			OWSG MWD + IFR1	

Plan Sections										
Measured Depth (ft)	Inclination (°)	Azimuth (°)	Vertical Depth (ft)	+N/-S (ft)	+E/-W (ft)	Dogleg Rate (°/100ft)	Build Rate (°/100ft)	Turn Rate (°/100ft)	TFO (°)	Target
0.00	0.00	0.00	0.00	0.00	0.00	0.00	0.00	0.00	0.00	
200.00	0.00	0.00	200.00	0.00	0.00	0.00	0.00	0.00	0.00	
1,200.00	20.00	145.95	1,179.82	-143.14	96.75	2.00	2.00	0.00	145.95	
6,869.92	20.00	145.95	6,507.80	-1,749.79	1,182.69	0.00	0.00	0.00	0.00	
7,985.49	89.54	269.32	7,232.00	-1,975.42	565.01	9.00	6.23	11.06	121.89	
13,555.88	89.54	269.32	7,277.00	-2,041.79	-5,004.81	0.00	0.00	0.00	0.00	PBHL_Falken 30C-14

Database:	EDM 5000.14 Single User Db	Local Co-ordinate Reference:	Well Falken 30C-14-S
Company:	Synergy Resources Corporation	TVD Reference:	GL 4810 & KB 20 @ 4830.00ft (ASSUMED)
Project:	SEC 12-13 T6N R66W	MD Reference:	GL 4810 & KB 20 @ 4830.00ft (ASSUMED)
Site:	Falken 9-11 PAD	North Reference:	True
Well:	Falken 30C-14-S	Survey Calculation Method:	Minimum Curvature
Wellbore:	OH		
Design:	Plan #1		

Planned Survey									
Measured Depth (ft)	Inclination (°)	Azimuth (°)	Vertical Depth (ft)	+N/-S (ft)	+E/-W (ft)	Vertical Section (ft)	Dogleg Rate (°/100ft)	Build Rate (°/100ft)	Turn Rate (°/100ft)
0.00	0.00	0.00	0.00	0.00	0.00	0.00	0.00	0.00	0.00
100.00	0.00	0.00	100.00	0.00	0.00	0.00	0.00	0.00	0.00
200.00	0.00	0.00	200.00	0.00	0.00	0.00	0.00	0.00	0.00
Start Build 2.00									
300.00	2.00	145.95	299.98	-1.45	0.98	-0.96	2.00	2.00	0.00
400.00	4.00	145.95	399.84	-5.78	3.91	-3.84	2.00	2.00	0.00
500.00	6.00	145.95	499.45	-13.00	8.79	-8.63	2.00	2.00	0.00
600.00	8.00	145.95	598.70	-23.10	15.61	-15.34	2.00	2.00	0.00
700.00	10.00	145.95	697.47	-36.06	24.37	-23.94	2.00	2.00	0.00
800.00	12.00	145.95	795.62	-51.87	35.06	-34.44	2.00	2.00	0.00
900.00	14.00	145.95	893.06	-70.50	47.65	-46.81	2.00	2.00	0.00
1,000.00	16.00	145.95	989.64	-91.94	62.15	-61.05	2.00	2.00	0.00
1,100.00	18.00	145.95	1,085.27	-116.17	78.52	-77.13	2.00	2.00	0.00
1,200.00	20.00	145.95	1,179.82	-143.14	96.75	-95.04	2.00	2.00	0.00
Start 5669.92 hold at 1200.00 MD									
1,300.00	20.00	145.95	1,273.78	-171.47	115.90	-113.86	0.00	0.00	0.00
1,400.00	20.00	145.95	1,367.75	-199.81	135.05	-132.67	0.00	0.00	0.00
1,500.00	20.00	145.95	1,461.72	-228.15	154.21	-151.49	0.00	0.00	0.00
1,600.00	20.00	145.95	1,555.69	-256.48	173.36	-170.30	0.00	0.00	0.00
1,700.00	20.00	145.95	1,649.66	-284.82	192.51	-189.12	0.00	0.00	0.00
1,800.00	20.00	145.95	1,743.63	-313.16	211.66	-207.93	0.00	0.00	0.00
1,806.78	20.00	145.95	1,750.00	-315.08	212.96	-209.21	0.00	0.00	0.00
9 5/8"									
1,900.00	20.00	145.95	1,837.60	-341.49	230.82	-226.75	0.00	0.00	0.00
2,000.00	20.00	145.95	1,931.57	-369.83	249.97	-245.56	0.00	0.00	0.00
2,100.00	20.00	145.95	2,025.54	-398.17	269.12	-264.38	0.00	0.00	0.00
2,200.00	20.00	145.95	2,119.51	-426.50	288.28	-283.19	0.00	0.00	0.00
2,300.00	20.00	145.95	2,213.48	-454.84	307.43	-302.01	0.00	0.00	0.00
2,400.00	20.00	145.95	2,307.45	-483.17	326.58	-320.82	0.00	0.00	0.00
2,500.00	20.00	145.95	2,401.42	-511.51	345.73	-339.64	0.00	0.00	0.00
2,600.00	20.00	145.95	2,495.39	-539.85	364.89	-358.45	0.00	0.00	0.00
2,700.00	20.00	145.95	2,589.35	-568.18	384.04	-377.27	0.00	0.00	0.00
2,800.00	20.00	145.95	2,683.32	-596.52	403.19	-396.08	0.00	0.00	0.00
2,900.00	20.00	145.95	2,777.29	-624.86	422.34	-414.90	0.00	0.00	0.00
3,000.00	20.00	145.95	2,871.26	-653.19	441.50	-433.71	0.00	0.00	0.00
3,100.00	20.00	145.95	2,965.23	-681.53	460.65	-452.53	0.00	0.00	0.00
3,200.00	20.00	145.95	3,059.20	-709.87	479.80	-471.34	0.00	0.00	0.00
3,300.00	20.00	145.95	3,153.17	-738.20	498.96	-490.16	0.00	0.00	0.00
3,400.00	20.00	145.95	3,247.14	-766.54	518.11	-508.97	0.00	0.00	0.00
3,500.00	20.00	145.95	3,341.11	-794.88	537.26	-527.79	0.00	0.00	0.00
3,600.00	20.00	145.95	3,435.08	-823.21	556.41	-546.60	0.00	0.00	0.00
3,700.00	20.00	145.95	3,529.05	-851.55	575.57	-565.42	0.00	0.00	0.00
3,800.00	20.00	145.95	3,623.02	-879.88	594.72	-584.23	0.00	0.00	0.00
3,900.00	20.00	145.95	3,716.99	-908.22	613.87	-603.05	0.00	0.00	0.00
4,000.00	20.00	145.95	3,810.95	-936.56	633.02	-621.86	0.00	0.00	0.00
4,100.00	20.00	145.95	3,904.92	-964.89	652.18	-640.68	0.00	0.00	0.00
4,200.00	20.00	145.95	3,998.89	-993.23	671.33	-659.50	0.00	0.00	0.00
4,300.00	20.00	145.95	4,092.86	-1,021.57	690.48	-678.31	0.00	0.00	0.00
4,400.00	20.00	145.95	4,186.83	-1,049.90	709.64	-697.13	0.00	0.00	0.00
4,500.00	20.00	145.95	4,280.80	-1,078.24	728.79	-715.94	0.00	0.00	0.00
4,600.00	20.00	145.95	4,374.77	-1,106.58	747.94	-734.76	0.00	0.00	0.00
4,700.00	20.00	145.95	4,468.74	-1,134.91	767.09	-753.57	0.00	0.00	0.00
4,800.00	20.00	145.95	4,562.71	-1,163.25	786.25	-772.39	0.00	0.00	0.00

Database:	EDM 5000.14 Single User Db	Local Co-ordinate Reference:	Well Falken 30C-14-S
Company:	Synergy Resources Corporation	TVD Reference:	GL 4810 & KB 20 @ 4830.00ft (ASSUMED)
Project:	SEC 12-13 T6N R66W	MD Reference:	GL 4810 & KB 20 @ 4830.00ft (ASSUMED)
Site:	Falken 9-11 PAD	North Reference:	True
Well:	Falken 30C-14-S	Survey Calculation Method:	Minimum Curvature
Wellbore:	OH		
Design:	Plan #1		

Planned Survey									
Measured Depth (ft)	Inclination (°)	Azimuth (°)	Vertical Depth (ft)	+N/-S (ft)	+E/-W (ft)	Vertical Section (ft)	Dogleg Rate (°/100ft)	Build Rate (°/100ft)	Turn Rate (°/100ft)
4,900.00	20.00	145.95	4,656.68	-1,191.58	805.40	-791.20	0.00	0.00	0.00
5,000.00	20.00	145.95	4,750.65	-1,219.92	824.55	-810.02	0.00	0.00	0.00
5,100.00	20.00	145.95	4,844.62	-1,248.26	843.70	-828.83	0.00	0.00	0.00
5,200.00	20.00	145.95	4,938.59	-1,276.59	862.86	-847.65	0.00	0.00	0.00
5,300.00	20.00	145.95	5,032.56	-1,304.93	882.01	-866.46	0.00	0.00	0.00
5,400.00	20.00	145.95	5,126.52	-1,333.27	901.16	-885.28	0.00	0.00	0.00
5,500.00	20.00	145.95	5,220.49	-1,361.60	920.32	-904.09	0.00	0.00	0.00
5,600.00	20.00	145.95	5,314.46	-1,389.94	939.47	-922.91	0.00	0.00	0.00
5,700.00	20.00	145.95	5,408.43	-1,418.28	958.62	-941.72	0.00	0.00	0.00
5,800.00	20.00	145.95	5,502.40	-1,446.61	977.77	-960.54	0.00	0.00	0.00
5,900.00	20.00	145.95	5,596.37	-1,474.95	996.93	-979.35	0.00	0.00	0.00
6,000.00	20.00	145.95	5,690.34	-1,503.28	1,016.08	-998.17	0.00	0.00	0.00
6,100.00	20.00	145.95	5,784.31	-1,531.62	1,035.23	-1,016.98	0.00	0.00	0.00
6,200.00	20.00	145.95	5,878.28	-1,559.96	1,054.38	-1,035.80	0.00	0.00	0.00
6,300.00	20.00	145.95	5,972.25	-1,588.29	1,073.54	-1,054.61	0.00	0.00	0.00
6,400.00	20.00	145.95	6,066.22	-1,616.63	1,092.69	-1,073.43	0.00	0.00	0.00
6,500.00	20.00	145.95	6,160.19	-1,644.97	1,111.84	-1,092.24	0.00	0.00	0.00
6,600.00	20.00	145.95	6,254.16	-1,673.30	1,131.00	-1,111.06	0.00	0.00	0.00
6,700.00	20.00	145.95	6,348.13	-1,701.64	1,150.15	-1,129.87	0.00	0.00	0.00
6,800.00	20.00	145.95	6,442.09	-1,729.98	1,169.30	-1,148.69	0.00	0.00	0.00
6,869.92	20.00	145.95	6,507.80	-1,749.79	1,182.69	-1,161.84	0.00	0.00	0.00
Start DLS 9.00 TFO 121.89									
6,900.00	18.71	153.13	6,536.18	-1,758.35	1,187.75	-1,166.80	9.00	-4.30	23.88
7,000.00	16.90	182.29	6,631.58	-1,787.24	1,194.44	-1,173.14	9.00	-1.81	29.16
7,100.00	19.46	210.26	6,726.76	-1,816.21	1,185.44	-1,163.81	9.00	2.56	27.97
7,200.00	25.08	229.03	6,819.38	-1,844.55	1,161.00	-1,139.03	9.00	5.62	18.77
7,300.00	32.19	240.64	6,907.16	-1,871.56	1,121.70	-1,099.41	9.00	7.11	11.61
7,400.00	40.00	248.26	6,987.94	-1,896.58	1,068.53	-1,045.94	9.00	7.81	7.62
7,500.00	48.17	253.70	7,059.73	-1,918.99	1,002.77	-979.93	9.00	8.17	5.44
7,600.00	56.54	257.89	7,120.77	-1,938.24	926.07	-903.00	9.00	8.37	4.19
7,700.00	65.03	261.33	7,169.54	-1,953.85	840.29	-817.05	9.00	8.49	3.44
7,800.00	73.58	264.33	7,204.85	-1,965.45	747.57	-724.19	9.00	8.55	2.99
7,900.00	82.18	267.07	7,225.83	-1,972.74	650.17	-626.71	9.00	8.59	2.74
7,985.49	89.54	269.32	7,232.00	-1,975.42	565.01	-541.53	9.00	8.61	2.63
LP(265 FNL 300 FWL)									
7,986.46	89.54	269.32	7,232.01	-1,975.43	564.04	-540.56	0.00	0.00	0.00
TOP_Falken 30C-14-S(359' FNL & 300' FWL)									
8,000.00	89.54	269.32	7,232.12	-1,975.59	550.50	-527.02	0.00	0.00	0.00
8,100.00	89.54	269.32	7,232.93	-1,976.78	450.51	-427.02	0.00	0.00	0.00
8,200.00	89.54	269.32	7,233.74	-1,977.97	350.52	-327.02	0.00	0.00	0.00
8,300.00	89.54	269.32	7,234.54	-1,979.16	250.53	-227.03	0.00	0.00	0.00
8,400.00	89.54	269.32	7,235.35	-1,980.35	150.54	-127.03	0.00	0.00	0.00
8,500.00	89.54	269.32	7,236.16	-1,981.55	50.55	-27.03	0.00	0.00	0.00
8,600.00	89.54	269.32	7,236.97	-1,982.74	-49.44	72.96	0.00	0.00	0.00
8,700.00	89.54	269.32	7,237.77	-1,983.93	-149.42	172.96	0.00	0.00	0.00
8,800.00	89.54	269.32	7,238.58	-1,985.12	-249.41	272.96	0.00	0.00	0.00
8,900.00	89.54	269.32	7,239.39	-1,986.31	-349.40	372.95	0.00	0.00	0.00
9,000.00	89.54	269.32	7,240.20	-1,987.50	-449.39	472.95	0.00	0.00	0.00
9,100.00	89.54	269.32	7,241.01	-1,988.69	-549.38	572.95	0.00	0.00	0.00
9,200.00	89.54	269.32	7,241.81	-1,989.89	-649.37	672.94	0.00	0.00	0.00
9,300.00	89.54	269.32	7,242.62	-1,991.08	-749.36	772.94	0.00	0.00	0.00
9,400.00	89.54	269.32	7,243.43	-1,992.27	-849.35	872.94	0.00	0.00	0.00
9,500.00	89.54	269.32	7,244.24	-1,993.46	-949.34	972.93	0.00	0.00	0.00

Database:	EDM 5000.14 Single User Db	Local Co-ordinate Reference:	Well Falken 30C-14-S
Company:	Synergy Resources Corporation	TVD Reference:	GL 4810 & KB 20 @ 4830.00ft (ASSUMED)
Project:	SEC 12-13 T6N R66W	MD Reference:	GL 4810 & KB 20 @ 4830.00ft (ASSUMED)
Site:	Falken 9-11 PAD	North Reference:	True
Well:	Falken 30C-14-S	Survey Calculation Method:	Minimum Curvature
Wellbore:	OH		
Design:	Plan #1		

Planned Survey										
Measured Depth (ft)	Inclination (°)	Azimuth (°)	Vertical Depth (ft)	+N/-S (ft)	+E/-W (ft)	Vertical Section (ft)	Dogleg Rate (°/100ft)	Build Rate (°/100ft)	Turn Rate (°/100ft)	
9,600.00	89.54	269.32	7,245.04	-1,994.65	-1,049.33	1,072.93	0.00	0.00	0.00	
9,700.00	89.54	269.32	7,245.85	-1,995.84	-1,149.32	1,172.93	0.00	0.00	0.00	
9,800.00	89.54	269.32	7,246.66	-1,997.04	-1,249.31	1,272.92	0.00	0.00	0.00	
9,900.00	89.54	269.32	7,247.47	-1,998.23	-1,349.30	1,372.92	0.00	0.00	0.00	
10,000.00	89.54	269.32	7,248.28	-1,999.42	-1,449.29	1,472.92	0.00	0.00	0.00	
10,100.00	89.54	269.32	7,249.08	-2,000.61	-1,549.28	1,572.91	0.00	0.00	0.00	
10,200.00	89.54	269.32	7,249.89	-2,001.80	-1,649.27	1,672.91	0.00	0.00	0.00	
10,300.00	89.54	269.32	7,250.70	-2,002.99	-1,749.26	1,772.91	0.00	0.00	0.00	
10,400.00	89.54	269.32	7,251.51	-2,004.18	-1,849.25	1,872.90	0.00	0.00	0.00	
10,500.00	89.54	269.32	7,252.31	-2,005.38	-1,949.24	1,972.90	0.00	0.00	0.00	
10,600.00	89.54	269.32	7,253.12	-2,006.57	-2,049.23	2,072.90	0.00	0.00	0.00	
10,700.00	89.54	269.32	7,253.93	-2,007.76	-2,149.22	2,172.89	0.00	0.00	0.00	
10,800.00	89.54	269.32	7,254.74	-2,008.95	-2,249.21	2,272.89	0.00	0.00	0.00	
10,900.00	89.54	269.32	7,255.55	-2,010.14	-2,349.20	2,372.89	0.00	0.00	0.00	
11,000.00	89.54	269.32	7,256.35	-2,011.33	-2,449.19	2,472.88	0.00	0.00	0.00	
11,100.00	89.54	269.32	7,257.16	-2,012.53	-2,549.18	2,572.88	0.00	0.00	0.00	
11,200.00	89.54	269.32	7,257.97	-2,013.72	-2,649.17	2,672.88	0.00	0.00	0.00	
11,300.00	89.54	269.32	7,258.78	-2,014.91	-2,749.16	2,772.87	0.00	0.00	0.00	
11,400.00	89.54	269.32	7,259.58	-2,016.10	-2,849.15	2,872.87	0.00	0.00	0.00	
11,500.00	89.54	269.32	7,260.39	-2,017.29	-2,949.13	2,972.87	0.00	0.00	0.00	
11,600.00	89.54	269.32	7,261.20	-2,018.48	-3,049.12	3,072.87	0.00	0.00	0.00	
11,700.00	89.54	269.32	7,262.01	-2,019.67	-3,149.11	3,172.86	0.00	0.00	0.00	
11,800.00	89.54	269.32	7,262.82	-2,020.87	-3,249.10	3,272.86	0.00	0.00	0.00	
11,900.00	89.54	269.32	7,263.62	-2,022.06	-3,349.09	3,372.86	0.00	0.00	0.00	
12,000.00	89.54	269.32	7,264.43	-2,023.25	-3,449.08	3,472.85	0.00	0.00	0.00	
12,100.00	89.54	269.32	7,265.24	-2,024.44	-3,549.07	3,572.85	0.00	0.00	0.00	
12,200.00	89.54	269.32	7,266.05	-2,025.63	-3,649.06	3,672.85	0.00	0.00	0.00	
12,300.00	89.54	269.32	7,266.86	-2,026.82	-3,749.05	3,772.84	0.00	0.00	0.00	
12,400.00	89.54	269.32	7,267.66	-2,028.01	-3,849.04	3,872.84	0.00	0.00	0.00	
12,500.00	89.54	269.32	7,268.47	-2,029.21	-3,949.03	3,972.84	0.00	0.00	0.00	
12,600.00	89.54	269.32	7,269.28	-2,030.40	-4,049.02	4,072.83	0.00	0.00	0.00	
12,700.00	89.54	269.32	7,270.09	-2,031.59	-4,149.01	4,172.83	0.00	0.00	0.00	
12,800.00	89.54	269.32	7,270.89	-2,032.78	-4,249.00	4,272.83	0.00	0.00	0.00	
12,900.00	89.54	269.32	7,271.70	-2,033.97	-4,348.99	4,372.82	0.00	0.00	0.00	
13,000.00	89.54	269.32	7,272.51	-2,035.16	-4,448.98	4,472.82	0.00	0.00	0.00	
13,100.00	89.54	269.32	7,273.32	-2,036.36	-4,548.97	4,572.82	0.00	0.00	0.00	
13,200.00	89.54	269.32	7,274.13	-2,037.55	-4,648.96	4,672.81	0.00	0.00	0.00	
13,300.00	89.54	269.32	7,274.93	-2,038.74	-4,748.95	4,772.81	0.00	0.00	0.00	
13,400.00	89.54	269.32	7,275.74	-2,039.93	-4,848.94	4,872.81	0.00	0.00	0.00	
13,500.00	89.54	269.32	7,276.55	-2,041.12	-4,948.93	4,972.80	0.00	0.00	0.00	
13,555.88	89.54	269.32	7,277.00	-2,041.79	-5,004.81	5,028.69	0.00	0.00	0.00	
TD at 13555.88 - PBHL_Falken 30C-14-S(336' FNL & 50' FWL)										

Database:	EDM 5000.14 Single User Db	Local Co-ordinate Reference:	Well Falken 30C-14-S
Company:	Synergy Resources Corporation	TVD Reference:	GL 4810 & KB 20 @ 4830.00ft (ASSUMED)
Project:	SEC 12-13 T6N R66W	MD Reference:	GL 4810 & KB 20 @ 4830.00ft (ASSUMED)
Site:	Falken 9-11 PAD	North Reference:	True
Well:	Falken 30C-14-S	Survey Calculation Method:	Minimum Curvature
Wellbore:	OH		
Design:	Plan #1		

Design Targets									
Target Name	Dip Angle	Dip Dir.	TVD	+N/-S	+E/-W	Northing	Easting	Latitude	Longitude
- hit/miss target	(°)	(°)	(ft)	(ft)	(ft)	(ft)	(ft)		
- Shape									
TOP_Falken 30C-14-S(0.00	0.00	7,232.00	-2,067.79	565.14	1,423,941.35	3,213,067.58	40.4945860	-104.7339190
- plan misses target center by 92.37ft at 7986.46ft MD (7232.01 TVD, -1975.43 N, 564.04 E)									
- Point									
PBHL_Falken 30C-14-S	0.00	0.00	7,277.00	-2,041.79	-5,004.81	1,423,919.36	3,207,497.61	40.4946560	-104.7539460
- plan hits target center									
- Point									

Casing Points					
Measured Depth	Vertical Depth	Name		Casing Diameter	Hole Diameter
(ft)	(ft)			(in)	(in)
1,806.78	1,750.00	9 5/8"		9.625	13.500

Plan Annotations				
Measured Depth	Vertical Depth	Local Coordinates		Comment
(ft)	(ft)	+N/-S (ft)	+E/-W (ft)	
200.00	200.00	0.00	0.00	Start Build 2.00
1,200.00	1,179.82	-143.14	96.75	Start 5669.92 hold at 1200.00 MD
6,869.92	6,507.80	-1,749.79	1,182.69	Start DLS 9.00 TFO 121.89
7,985.49	7,232.00	-1,975.42	565.01	LP(265 FNL 300 FWL)
13,555.88	7,277.00	-2,041.79	-5,004.81	TD at 13555.88