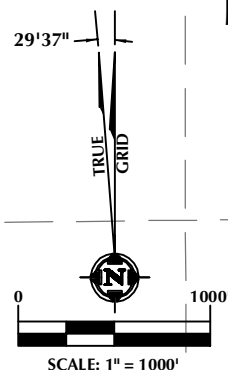


T6N, R66WW. 1/4 COR.
SEC. 11, T6N, R66W
FOUND 3 1/4" ALUM. CAP
P.L.S. NO. 28258CENTER 1/4 COR.
SEC. 11, T6N, R66W
SET 2 1/2" ALUM. CAP
P.L.S. NO. 38230E. 1/4 COR.
SEC. 11, T6N, R66W
FOUND 2 1/2" ALUM. CAP
L.S. NO. 30462S 89°21'43" W
2672.00' (M)S 89°21'31" W
2663.91' (M)S 89°31'21" W
2653.53' (C)SURFACE LOCATION
GROUND ELEVATION= 4810.8'
LATITUDE= 40.500262°
LONGITUDE= -104.735951°
1/4 1/4: NE1/4 SE1/4TOP OF PRODUCTION
LATITUDE= 40.494586°
LONGITUDE= -104.733919°
1/4 1/4: NW1/4 NW1/4BOTTOM HOLE LOCATION
LATITUDE= 40.494656°
LONGITUDE= -104.753946°
1/4 1/4: NW1/4 NW1/4**FALKEN 30C-14-S**
SURFACE LOCATIONN 00°10'15" W
2654.39' (M)N 00°04'20" W
2663.05' (M)SW. COR.
SEC. 11, T6N, R66W
FOUND 3 1/4" ALUM. CAP
L.S. NO. 22098S. 1/4 COR.
SEC. 11, T6N, R66W
SET 2 1/2" ALUM. CAP
P.L.S. NO. 38230SE. COR.
SEC. 11, T6N, R66W
FOUND 2 1/2" ALUM. CAP
L.S. NO. 23501S. 1/4 COR.
SEC. 12, T6N, R66W
FOUND 2 1/2" ALUM. CAP
ILLEGIBLE

S 89°32'51" W 2659.53' (M)

S 89°32'39" W 2659.27' (M)

S 89°23'55" W
2657.62' (M)50'
336'
BOTTOM OF HOLES 89°46'28" W
N 89°43'55" W TRUE

300'

460' BUFFER

N 00°17'14" W
2636.26' (C)N 00°44'41" W
2636.17' (M)

TOP OF PRODUCTION ZONE

S 89°32'30" W
2647.12' (C)S 89°32'30" W
2680.32' (C)S 89°27'04" W
2653.64' (C)W. 1/4 COR.
SEC. 14, T6N, R66W
FOUND 2 1/2" ALUM. CAP
ILLEGIBLEE. 1/4 COR.
SEC. 14, T6N, R66W
FOUND 2 1/2" ALUM. CAP
L.S. NO. 23501**CERTIFICATE OF SURVEYOR:**

THIS IS TO CERTIFY THAT THE ABOVE PLAT WAS PREPARED FROM FIELD NOTES OF ACTUAL SURVEY MADE BY ME OR UNDER MY SUPERVISION AND THAT THE SAME ARE TRUE AND CORRECT TO THE BEST OF MY KNOWLEDGE AND BELIEF. THIS CERTIFICATE DOES NOT REPRESENT A LAND SURVEY PLAT OR IMPROVEMENT SURVEY PLAT AS DEFINED BY C.S. 38-51-102 AND CANNOT BE RELIED UPON TO DETERMINE OWNERSHIP.

38230

JOHN R. SLAUGH
PROFESSIONAL LAND SURVEYOR
COLORADO REGISTRATION NUMBER 18230

NOTICE:
ACCORDING TO COLORADO STATE LAW YOU MUST COMMENCE ANY LEGAL ACTION BASED UPON ANY DEFECT IN THIS SURVEY WITHIN THREE YEARS AFTER YOU FIRST DISCOVER SUCH DEFECT. IN NO EVENT MAY ANY ACTION BASED UPON ANY DEFECT IN THIS SURVEY BE COMMENCED MORE THAN TEN YEARS FROM THE DATE ON THE CERTIFICATION SHOWN HEREON.

WELL DISTANCES:

BUILDING: ±1803' SE

BUILDING UNIT: ±1823' SE

HIGH OCCUPANCY BUILDING UNIT: 5280'+

DESIGNATED OUTSIDE ACTIVITY AREA: 5280'+

PUBLIC ROAD: ±264' E

ABOVE GROUND UTILITY: ±246' E

RAILROAD: 5280'+

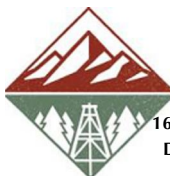
PROPERTY LINE: ±276' E

NOTES:

- ▲ INDICATES SECTION CORNER
- INDICATES CALCULATED CORNER
- DRAWING LATITUDE AND LONGITUDE COORDINATES ARE NAD 83 (2011)(EPOCH:2010)
- ELEVATION BASED ON NAVD88 (GEOID12B)
- BASIS OF BEARING DERIVED FROM COLORADO COORDINATE SYSTEM OF 1983 NORTH ZONE.
- ALL MEASURED DISTANCES ARE GRID.
COMBINED SCALE FACTOR: .99973891 CALCULATED FROM THE SW. CORNER OF SECTION 11, T6N, R66W
- OPERATOR: ROB WILSON / PDOP = 2.1
- SEE ADDENDUM TO WELL LOCATION CERTIFICATE FOR EXISTING IMPROVEMENTS WITHIN 500' OF THE WELL PAD.
- WELL FOOTAGES ARE MEASURED AT RIGHT ANGLES TO THE SECTION LINES.
- THE BOTTOM OF HOLE BEARS S89°46'28"W, 5570' FROM THE TOP OF PRODUCTION ZONE.

WELL PAD - FALKEN 9-11 PAD

FALKEN 30C-14-S
WELL LOCATION CERTIFICATE
1709' FSL & 276' FEL NESE (SURFACE)
LOCATED IN SECTION 11
359' FNL & 300' FWL NWNW (TOP OF PRODUCTION)
LOCATED IN SECTION 13
336' FNL & 50' FWL NWNW (BOTTOM)
LOCATED IN SECTION 14
T6N, R66W, 6TH P.M.
WELD COUNTY, COLORADO

**SRC ENERGY**1675 Broadway, Suite 2600
Denver, Colorado 80202**CONSULTING, LLC**

SHERIDAN OFFICE
1095 Saberton Avenue
Sheridan, Wyoming 82801
Phone 307-674-0609

LOVELAND OFFICE
1635 Foxtrail Drive, Suite 204
Loveland, Colorado 80538
Phone 970-776-4331

DRAFTED BY:	LMO	CHECKED BY:	JRS
DATE DRAFTED:	4/14/17	DATE SURVEYED:	4/3/17
REVISED:		FILE NAME:	17-26