



Project: SEC 12-13 T6N R66W
Site: Falken 9-11 PAD
Well: Falken 30N-14B-S
Wellbore: OH
Design: Plan #1

MD	Inc	Azi	TVD	+N/-S	+E/-W	Dleg	TFace	Vsect	Target
0.00	0.00	0.00	0.00	0.00	0.00	0.00	0.00	0.00	
200.00	0.00	0.00	200.00	0.00	0.00	0.00	0.00	0.00	
1191.50	19.83	144.35	1171.82	-138.04	99.01	2.00	144.35	-99.30	
6677.33	19.83	144.35	6332.36	-1650.24	1183.63	0.00	0.00	-1187.09	
7799.36	89.53	270.12	7065.00	-1861.44	564.26	9.00	124.26	-568.16	
13368.87	89.53	270.12	7111.00	-1849.79	-5005.04	0.00	0.00	5001.16	PBHL_Falken 30N-14B-S

PROJECT DETAILS: SEC 12-13 T6N R66W

Geodetic System: US State Plane 1983
Datum: North American Datum 1983
Ellipsoid: GRS 1980
Zone: Colorado Northern Zone
Colorado Northern Zone
System Datum: Mean Sea Level

DESIGN TARGET DETAILS

Name	TVD	+N/-S	+E/-W	Northing	Easting	Latitude	Longitude	Shape
TOP_Falken 30N-14B-S	7065.00	-1863.77	564.31	1424160.28	3213064.85	40.4951870	-104.7339220	Point
- plan misses target center by 2.33ft at 7799.34ft MD (7065.00 TVD, -1861.44 N, 564.28 E)								
PBHL_Falken 30N-14B-S	7111.00	-1849.79	-5005.04	1424126.27	3207495.59	40.4952240	-104.7539470	Point
- plan hits target center								

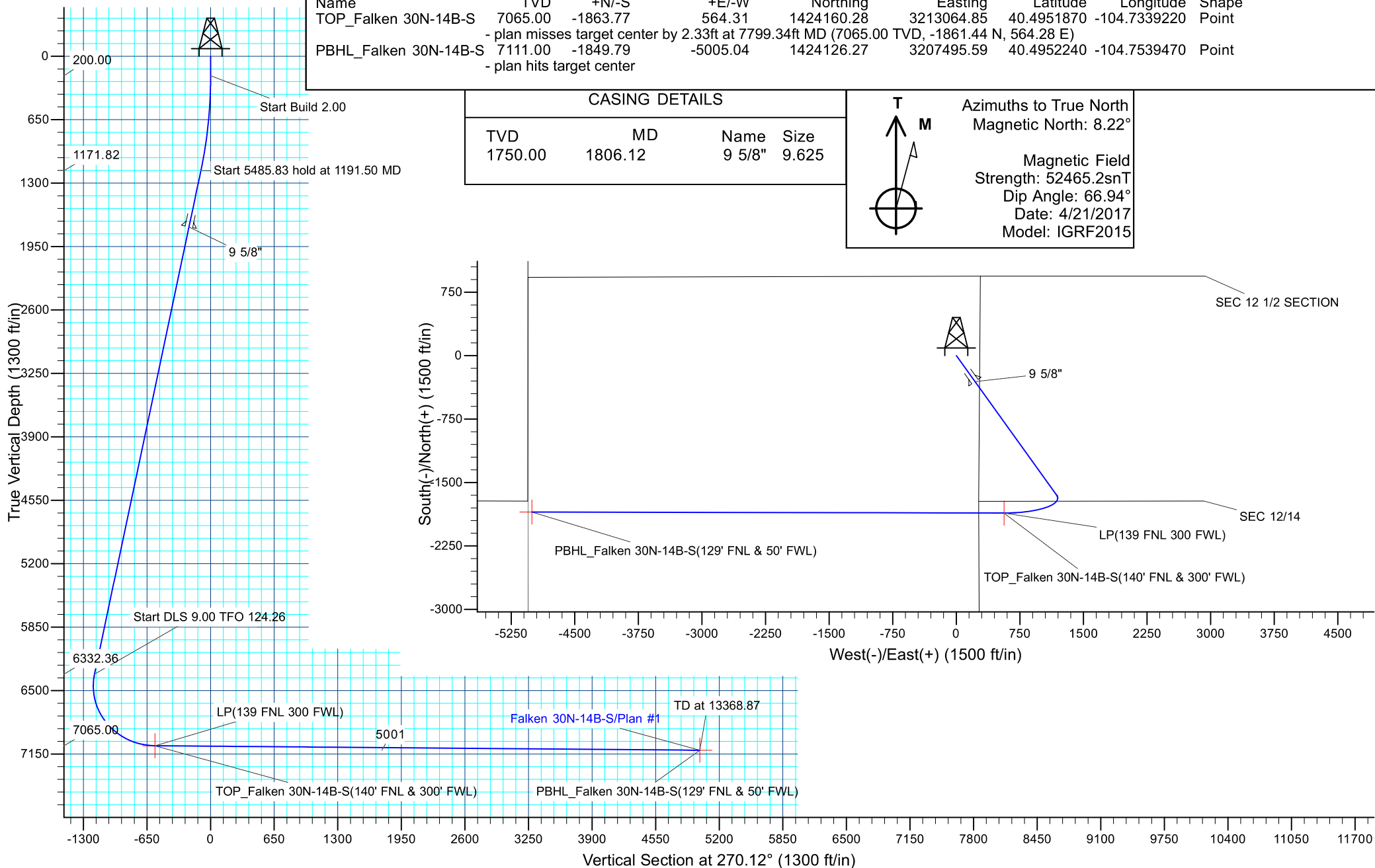
CASING DETAILS

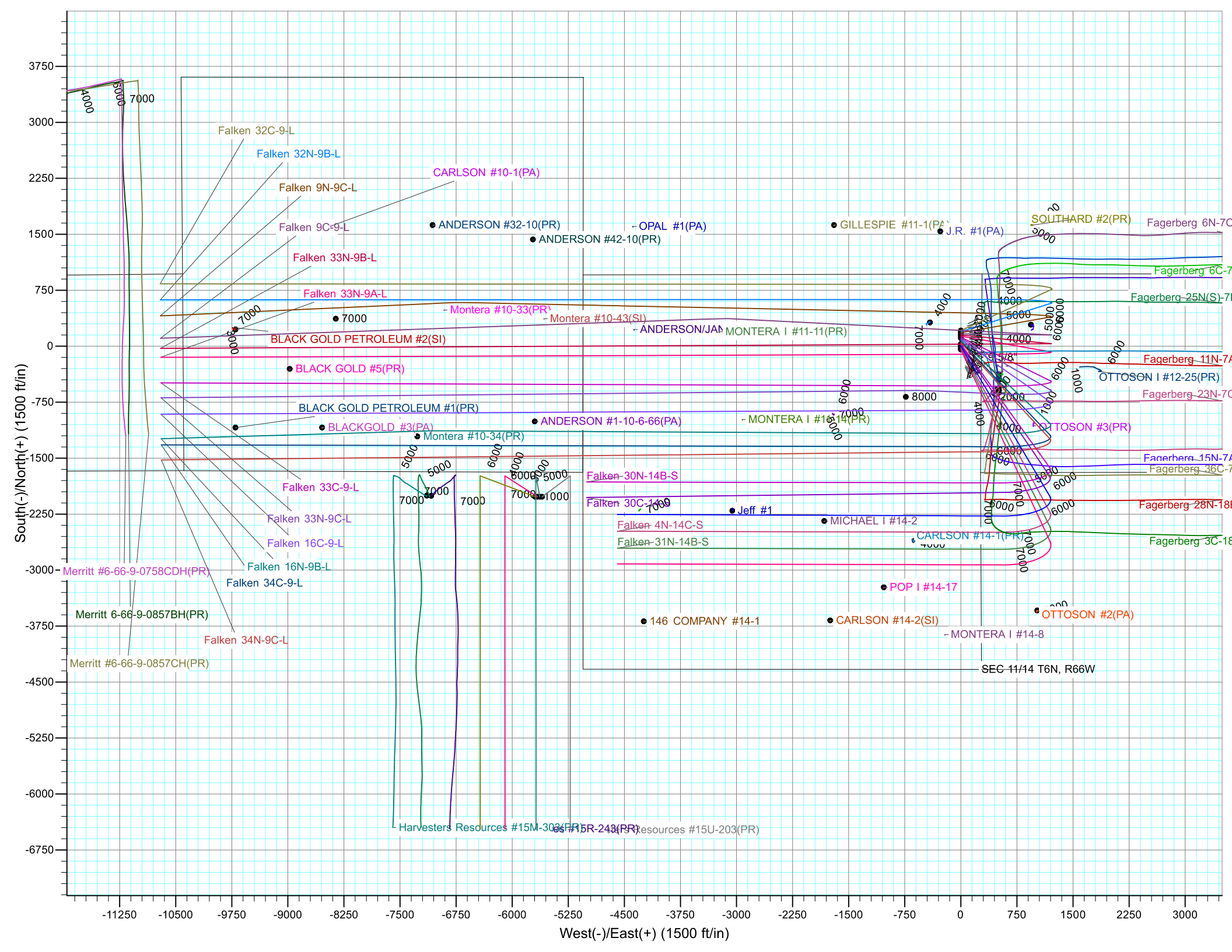
TVD	MD	Name	Size
1750.00	1806.12	9 5/8"	9.625

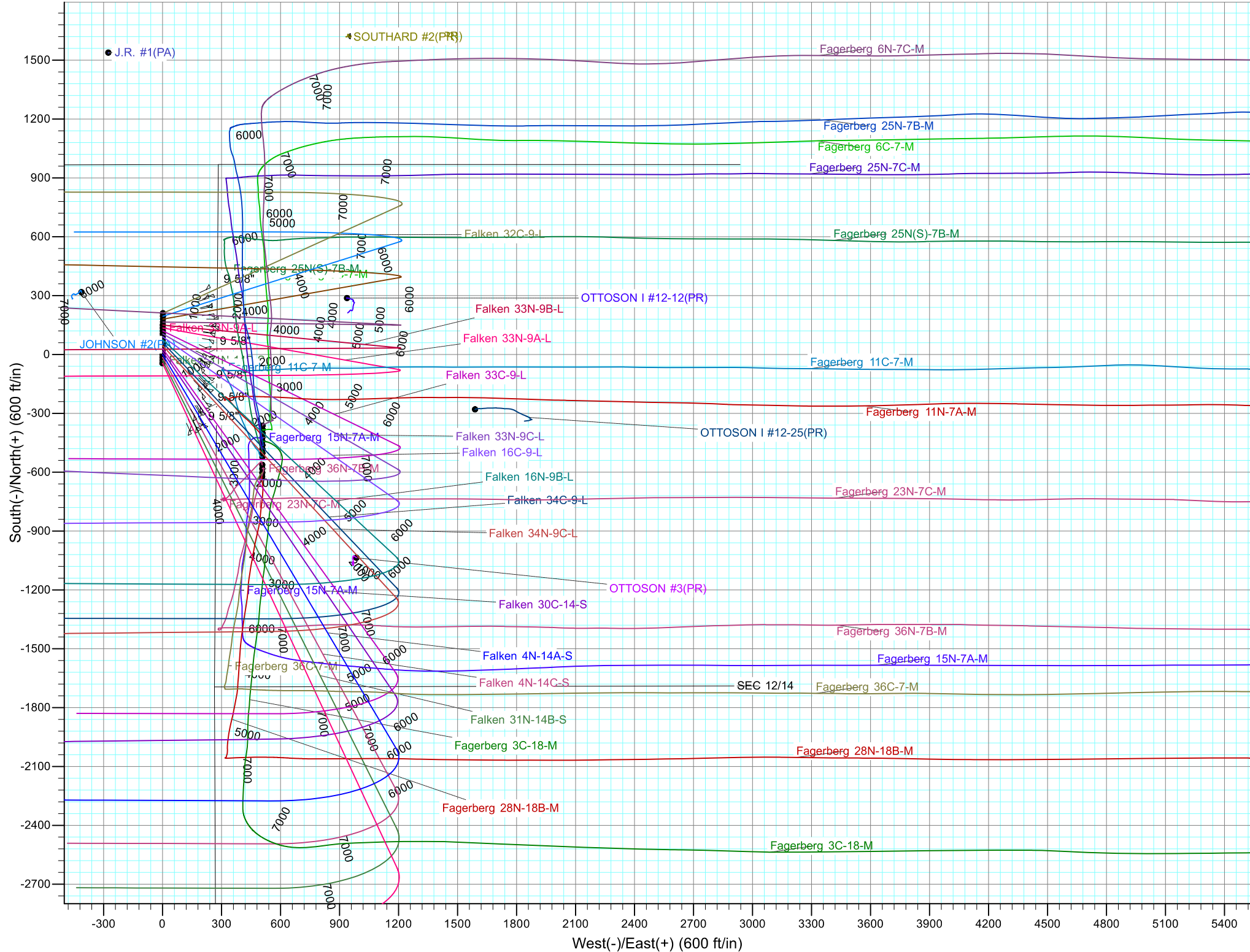


Azimuths to True North
Magnetic North: 8.22°

Magnetic Field
Strength: 52465.2snT
Dip Angle: 66.94°
Date: 4/21/2017
Model: IGRF2015









Synergy Resources Corporation

SEC 12-13 T6N R66W

Falken 9-11 PAD

Falken 30N-14B-S

OH

Plan: Plan #1

Standard Planning Report

25 April, 2017



Database:	EDM 5000.14 Single User Db	Local Co-ordinate Reference:	Well Falken 30N-14B-S
Company:	Synergy Resources Corporation	TVD Reference:	GL 4810 & KB 20 @ 4830.00ft (ASSUMED)
Project:	SEC 12-13 T6N R66W	MD Reference:	GL 4810 & KB 20 @ 4830.00ft (ASSUMED)
Site:	Falken 9-11 PAD	North Reference:	True
Well:	Falken 30N-14B-S	Survey Calculation Method:	Minimum Curvature
Wellbore:	OH		
Design:	Plan #1		

Project	SEC 12-13 T6N R66W		
Map System:	US State Plane 1983	System Datum:	Mean Sea Level
Geo Datum:	North American Datum 1983		
Map Zone:	Colorado Northern Zone		

Site		Falken 9-11 PAD			
Site Position:		Northing:	1,426,199.10 ft	Latitude:	40.5007970
From:	Lat/Long	Easting:	3,212,484.63 ft	Longitude:	-104.7359450
Position Uncertainty:	3.28 ft	Slot Radius:	13.200 in	Grid Convergence:	0.49 °

Well		Falken 30N-14B-S, 1724' FSL & 276' FEL				
Well Position	+N/-S	-179.98 ft	Northing:	1,426,019.12 ft	Latitude:	40.5003030
	+E/-W	-1.67 ft	Easting:	3,212,484.51 ft	Longitude:	-104.7359510
Position Uncertainty		3.28 ft	Wellhead Elevation:		Ground Level:	4,810.00 ft

Wellbore	OH				
Magnetics	Model Name	Sample Date	Declination (°)	Dip Angle (°)	Field Strength (nT)
	IGRF2015	4/21/2017	8.22	66.94	52,465

Design	Plan #1			
Audit Notes:				
Version:	Phase:	PLAN	Tie On Depth:	0.00
Vertical Section:	Depth From (TVD) (ft)	+N/-S (ft)	+E/-W (ft)	Direction (°)
	0.00	0.00	0.00	270.12

Plan Survey Tool Program	Date	4/24/2017			
Depth From (ft)	Depth To (ft)	Survey (Wellbore)	Tool Name	Remarks	
1	0.00	13,368.84 Plan #1 (OH)	MWD+IFR1		
			OWSG MWD + IFR1		

Plan Sections										
Measured Depth (ft)	Inclination (°)	Azimuth (°)	Vertical Depth (ft)	+N/-S (ft)	+E/-W (ft)	Dogleg Rate (°/100ft)	Build Rate (°/100ft)	Turn Rate (°/100ft)	TFO (°)	Target
0.00	0.00	0.00	0.00	0.00	0.00	0.00	0.00	0.00	0.00	
200.00	0.00	0.00	200.00	0.00	0.00	0.00	0.00	0.00	0.00	
1,191.50	19.83	144.35	1,171.82	-138.04	99.01	2.00	2.00	0.00	144.35	
6,677.33	19.83	144.35	6,332.36	-1,650.24	1,183.63	0.00	0.00	0.00	0.00	
7,799.36	89.53	270.12	7,065.00	-1,861.44	564.26	9.00	6.21	11.21	124.26	
13,368.87	89.53	270.12	7,111.00	-1,849.79	-5,005.04	0.00	0.00	0.00	0.00	PBHL_Falken 30N-14

Database:	EDM 5000.14 Single User Db	Local Co-ordinate Reference:	Well Falken 30N-14B-S
Company:	Synergy Resources Corporation	TVD Reference:	GL 4810 & KB 20 @ 4830.00ft (ASSUMED)
Project:	SEC 12-13 T6N R66W	MD Reference:	GL 4810 & KB 20 @ 4830.00ft (ASSUMED)
Site:	Falken 9-11 PAD	North Reference:	True
Well:	Falken 30N-14B-S	Survey Calculation Method:	Minimum Curvature
Wellbore:	OH		
Design:	Plan #1		

Planned Survey									
Measured Depth (ft)	Inclination (°)	Azimuth (°)	Vertical Depth (ft)	+N/-S (ft)	+E/-W (ft)	Vertical Section (ft)	Dogleg Rate (°/100ft)	Build Rate (°/100ft)	Turn Rate (°/100ft)
0.00	0.00	0.00	0.00	0.00	0.00	0.00	0.00	0.00	0.00
100.00	0.00	0.00	100.00	0.00	0.00	0.00	0.00	0.00	0.00
200.00	0.00	0.00	200.00	0.00	0.00	0.00	0.00	0.00	0.00
Start Build 2.00									
300.00	2.00	144.35	299.98	-1.42	1.02	-1.02	2.00	2.00	0.00
400.00	4.00	144.35	399.84	-5.67	4.07	-4.08	2.00	2.00	0.00
500.00	6.00	144.35	499.45	-12.75	9.15	-9.17	2.00	2.00	0.00
600.00	8.00	144.35	598.70	-22.66	16.25	-16.30	2.00	2.00	0.00
700.00	10.00	144.35	697.47	-35.37	25.37	-25.44	2.00	2.00	0.00
800.00	12.00	144.35	795.62	-50.87	36.49	-36.59	2.00	2.00	0.00
900.00	14.00	144.35	893.06	-69.15	49.60	-49.74	2.00	2.00	0.00
1,000.00	16.00	144.35	989.64	-90.18	64.68	-64.87	2.00	2.00	0.00
1,100.00	18.00	144.35	1,085.27	-113.94	81.72	-81.96	2.00	2.00	0.00
1,191.50	19.83	144.35	1,171.82	-138.04	99.01	-99.30	2.00	2.00	0.00
Start 5485.83 hold at 1191.50 MD									
1,200.00	19.83	144.35	1,179.82	-140.38	100.69	-100.98	0.00	0.00	0.00
1,300.00	19.83	144.35	1,273.89	-167.95	120.46	-120.81	0.00	0.00	0.00
1,400.00	19.83	144.35	1,367.96	-195.51	140.23	-140.64	0.00	0.00	0.00
1,500.00	19.83	144.35	1,462.03	-223.08	160.00	-160.47	0.00	0.00	0.00
1,600.00	19.83	144.35	1,556.10	-250.64	179.77	-180.30	0.00	0.00	0.00
1,700.00	19.83	144.35	1,650.17	-278.21	199.55	-200.13	0.00	0.00	0.00
1,800.00	19.83	144.35	1,744.24	-305.77	219.32	-219.96	0.00	0.00	0.00
1,806.12	19.83	144.35	1,750.00	-307.46	220.53	-221.17	0.00	0.00	0.00
9 5/8"									
1,900.00	19.83	144.35	1,838.31	-333.34	239.09	-239.79	0.00	0.00	0.00
2,000.00	19.83	144.35	1,932.38	-360.91	258.86	-259.61	0.00	0.00	0.00
2,100.00	19.83	144.35	2,026.45	-388.47	278.63	-279.44	0.00	0.00	0.00
2,200.00	19.83	144.35	2,120.52	-416.04	298.40	-299.27	0.00	0.00	0.00
2,300.00	19.83	144.35	2,214.59	-443.60	318.17	-319.10	0.00	0.00	0.00
2,400.00	19.83	144.35	2,308.66	-471.17	337.95	-338.93	0.00	0.00	0.00
2,500.00	19.83	144.35	2,402.73	-498.73	357.72	-358.76	0.00	0.00	0.00
2,600.00	19.83	144.35	2,496.80	-526.30	377.49	-378.59	0.00	0.00	0.00
2,700.00	19.83	144.35	2,590.87	-553.86	397.26	-398.42	0.00	0.00	0.00
2,800.00	19.83	144.35	2,684.95	-581.43	417.03	-418.25	0.00	0.00	0.00
2,900.00	19.83	144.35	2,779.02	-609.00	436.80	-438.08	0.00	0.00	0.00
3,000.00	19.83	144.35	2,873.09	-636.56	456.57	-457.91	0.00	0.00	0.00
3,100.00	19.83	144.35	2,967.16	-664.13	476.35	-477.74	0.00	0.00	0.00
3,200.00	19.83	144.35	3,061.23	-691.69	496.12	-497.56	0.00	0.00	0.00
3,300.00	19.83	144.35	3,155.30	-719.26	515.89	-517.39	0.00	0.00	0.00
3,400.00	19.83	144.35	3,249.37	-746.82	535.66	-537.22	0.00	0.00	0.00
3,500.00	19.83	144.35	3,343.44	-774.39	555.43	-557.05	0.00	0.00	0.00
3,600.00	19.83	144.35	3,437.51	-801.96	575.20	-576.88	0.00	0.00	0.00
3,700.00	19.83	144.35	3,531.58	-829.52	594.97	-596.71	0.00	0.00	0.00
3,800.00	19.83	144.35	3,625.65	-857.09	614.75	-616.54	0.00	0.00	0.00
3,900.00	19.83	144.35	3,719.72	-884.65	634.52	-636.37	0.00	0.00	0.00
4,000.00	19.83	144.35	3,813.79	-912.22	654.29	-656.20	0.00	0.00	0.00
4,100.00	19.83	144.35	3,907.86	-939.78	674.06	-676.03	0.00	0.00	0.00
4,200.00	19.83	144.35	4,001.93	-967.35	693.83	-695.86	0.00	0.00	0.00
4,300.00	19.83	144.35	4,096.00	-994.91	713.60	-715.68	0.00	0.00	0.00
4,400.00	19.83	144.35	4,190.07	-1,022.48	733.37	-735.51	0.00	0.00	0.00
4,500.00	19.83	144.35	4,284.14	-1,050.05	753.15	-755.34	0.00	0.00	0.00
4,600.00	19.83	144.35	4,378.21	-1,077.61	772.92	-775.17	0.00	0.00	0.00
4,700.00	19.83	144.35	4,472.28	-1,105.18	792.69	-795.00	0.00	0.00	0.00

Database:	EDM 5000.14 Single User Db	Local Co-ordinate Reference:	Well Falken 30N-14B-S
Company:	Synergy Resources Corporation	TVD Reference:	GL 4810 & KB 20 @ 4830.00ft (ASSUMED)
Project:	SEC 12-13 T6N R66W	MD Reference:	GL 4810 & KB 20 @ 4830.00ft (ASSUMED)
Site:	Falken 9-11 PAD	North Reference:	True
Well:	Falken 30N-14B-S	Survey Calculation Method:	Minimum Curvature
Wellbore:	OH		
Design:	Plan #1		

Planned Survey									
Measured Depth (ft)	Inclination (°)	Azimuth (°)	Vertical Depth (ft)	+N/-S (ft)	+E/-W (ft)	Vertical Section (ft)	Dogleg Rate (°/100ft)	Build Rate (°/100ft)	Turn Rate (°/100ft)
4,800.00	19.83	144.35	4,566.35	-1,132.74	812.46	-814.83	0.00	0.00	0.00
4,900.00	19.83	144.35	4,660.42	-1,160.31	832.23	-834.66	0.00	0.00	0.00
5,000.00	19.83	144.35	4,754.49	-1,187.87	852.00	-854.49	0.00	0.00	0.00
5,100.00	19.83	144.35	4,848.56	-1,215.44	871.77	-874.32	0.00	0.00	0.00
5,200.00	19.83	144.35	4,942.63	-1,243.00	891.55	-894.15	0.00	0.00	0.00
5,300.00	19.83	144.35	5,036.70	-1,270.57	911.32	-913.98	0.00	0.00	0.00
5,400.00	19.83	144.35	5,130.77	-1,298.14	931.09	-933.81	0.00	0.00	0.00
5,500.00	19.83	144.35	5,224.84	-1,325.70	950.86	-953.63	0.00	0.00	0.00
5,600.00	19.83	144.35	5,318.91	-1,353.27	970.63	-973.46	0.00	0.00	0.00
5,700.00	19.83	144.35	5,412.98	-1,380.83	990.40	-993.29	0.00	0.00	0.00
5,800.00	19.83	144.35	5,507.06	-1,408.40	1,010.17	-1,013.12	0.00	0.00	0.00
5,900.00	19.83	144.35	5,601.13	-1,435.96	1,029.95	-1,032.95	0.00	0.00	0.00
6,000.00	19.83	144.35	5,695.20	-1,463.53	1,049.72	-1,052.78	0.00	0.00	0.00
6,100.00	19.83	144.35	5,789.27	-1,491.10	1,069.49	-1,072.61	0.00	0.00	0.00
6,200.00	19.83	144.35	5,883.34	-1,518.66	1,089.26	-1,092.44	0.00	0.00	0.00
6,300.00	19.83	144.35	5,977.41	-1,546.23	1,109.03	-1,112.27	0.00	0.00	0.00
6,400.00	19.83	144.35	6,071.48	-1,573.79	1,128.80	-1,132.10	0.00	0.00	0.00
6,500.00	19.83	144.35	6,165.55	-1,601.36	1,148.57	-1,151.93	0.00	0.00	0.00
6,600.00	19.83	144.35	6,259.62	-1,628.92	1,168.35	-1,171.76	0.00	0.00	0.00
6,677.33	19.83	144.35	6,332.36	-1,650.24	1,183.63	-1,187.09	0.00	0.00	0.00
Start DLS 9.00 TFO 124.26									
6,700.00	18.75	149.60	6,353.76	-1,656.51	1,187.72	-1,191.19	9.00	-4.75	23.16
6,800.00	16.29	178.71	6,449.30	-1,684.45	1,196.19	-1,199.71	9.00	-2.47	29.10
6,900.00	18.34	208.50	6,544.95	-1,712.36	1,188.98	-1,192.57	9.00	2.06	29.80
7,000.00	23.77	228.73	6,638.35	-1,739.54	1,166.28	-1,169.92	9.00	5.43	20.22
7,100.00	30.85	240.98	6,727.22	-1,765.32	1,128.63	-1,132.33	9.00	7.07	12.25
7,200.00	38.66	248.85	6,809.36	-1,789.08	1,076.98	-1,080.72	9.00	7.82	7.87
7,300.00	46.85	254.37	6,882.75	-1,810.23	1,012.58	-1,016.37	9.00	8.19	5.52
7,400.00	55.24	258.56	6,945.57	-1,828.24	937.04	-940.86	9.00	8.39	4.20
7,500.00	63.75	261.98	6,996.30	-1,842.67	852.19	-856.05	9.00	8.51	3.41
7,600.00	72.33	264.92	7,033.66	-1,853.17	760.14	-764.02	9.00	8.58	2.94
7,700.00	80.95	267.59	7,056.76	-1,859.48	663.16	-667.05	9.00	8.62	2.67
7,799.36	89.53	270.12	7,065.00	-1,861.44	564.26	-568.16	9.00	8.64	2.55
LP(139 FNL 300 FWL) - TOP_Falken 30N-14B-S(140' FNL & 300' FWL)									
7,800.00	89.53	270.12	7,065.01	-1,861.44	563.62	-567.52	0.00	0.00	0.00
7,900.00	89.53	270.12	7,065.83	-1,861.23	463.62	-467.52	0.00	0.00	0.00
8,000.00	89.53	270.12	7,066.66	-1,861.02	363.63	-367.53	0.00	0.00	0.00
8,100.00	89.53	270.12	7,067.49	-1,860.81	263.63	-267.53	0.00	0.00	0.00
8,200.00	89.53	270.12	7,068.31	-1,860.61	163.64	-167.53	0.00	0.00	0.00
8,300.00	89.53	270.12	7,069.14	-1,860.40	63.64	-67.54	0.00	0.00	0.00
8,400.00	89.53	270.12	7,069.96	-1,860.19	-36.36	32.46	0.00	0.00	0.00
8,500.00	89.53	270.12	7,070.79	-1,859.98	-136.35	132.46	0.00	0.00	0.00
8,600.00	89.53	270.12	7,071.61	-1,859.77	-236.35	232.45	0.00	0.00	0.00
8,700.00	89.53	270.12	7,072.44	-1,859.56	-336.35	332.45	0.00	0.00	0.00
8,800.00	89.53	270.12	7,073.27	-1,859.35	-436.34	432.45	0.00	0.00	0.00
8,900.00	89.53	270.12	7,074.09	-1,859.14	-536.34	532.44	0.00	0.00	0.00
9,000.00	89.53	270.12	7,074.92	-1,858.93	-636.34	632.44	0.00	0.00	0.00
9,100.00	89.53	270.12	7,075.74	-1,858.72	-736.33	732.44	0.00	0.00	0.00
9,200.00	89.53	270.12	7,076.57	-1,858.51	-836.33	832.43	0.00	0.00	0.00
9,300.00	89.53	270.12	7,077.40	-1,858.30	-936.32	932.43	0.00	0.00	0.00
9,400.00	89.53	270.12	7,078.22	-1,858.10	-1,036.32	1,032.43	0.00	0.00	0.00
9,500.00	89.53	270.12	7,079.05	-1,857.89	-1,136.32	1,132.42	0.00	0.00	0.00
9,600.00	89.53	270.12	7,079.87	-1,857.68	-1,236.31	1,232.42	0.00	0.00	0.00
9,700.00	89.53	270.12	7,080.70	-1,857.47	-1,336.31	1,332.42	0.00	0.00	0.00

Database:	EDM 5000.14 Single User Db	Local Co-ordinate Reference:	Well Falken 30N-14B-S
Company:	Synergy Resources Corporation	TVD Reference:	GL 4810 & KB 20 @ 4830.00ft (ASSUMED)
Project:	SEC 12-13 T6N R66W	MD Reference:	GL 4810 & KB 20 @ 4830.00ft (ASSUMED)
Site:	Falken 9-11 PAD	North Reference:	True
Well:	Falken 30N-14B-S	Survey Calculation Method:	Minimum Curvature
Wellbore:	OH		
Design:	Plan #1		

Planned Survey										
Measured Depth (ft)	Inclination (°)	Azimuth (°)	Vertical Depth (ft)	+N-S (ft)	+E-W (ft)	Vertical Section (ft)	Dogleg Rate (°/100ft)	Build Rate (°/100ft)	Turn Rate (°/100ft)	
9,800.00	89.53	270.12	7,081.53	-1,857.26	-1,436.31	1,432.41	0.00	0.00	0.00	
9,900.00	89.53	270.12	7,082.35	-1,857.05	-1,536.30	1,532.41	0.00	0.00	0.00	
10,000.00	89.53	270.12	7,083.18	-1,856.84	-1,636.30	1,632.41	0.00	0.00	0.00	
10,100.00	89.53	270.12	7,084.00	-1,856.63	-1,736.30	1,732.40	0.00	0.00	0.00	
10,200.00	89.53	270.12	7,084.83	-1,856.42	-1,836.29	1,832.40	0.00	0.00	0.00	
10,300.00	89.53	270.12	7,085.65	-1,856.21	-1,936.29	1,932.40	0.00	0.00	0.00	
10,400.00	89.53	270.12	7,086.48	-1,856.00	-2,036.28	2,032.39	0.00	0.00	0.00	
10,500.00	89.53	270.12	7,087.31	-1,855.79	-2,136.28	2,132.39	0.00	0.00	0.00	
10,600.00	89.53	270.12	7,088.13	-1,855.59	-2,236.28	2,232.39	0.00	0.00	0.00	
10,700.00	89.53	270.12	7,088.96	-1,855.38	-2,336.27	2,332.38	0.00	0.00	0.00	
10,800.00	89.53	270.12	7,089.78	-1,855.17	-2,436.27	2,432.38	0.00	0.00	0.00	
10,900.00	89.53	270.12	7,090.61	-1,854.96	-2,536.27	2,532.38	0.00	0.00	0.00	
11,000.00	89.53	270.12	7,091.44	-1,854.75	-2,636.26	2,632.37	0.00	0.00	0.00	
11,100.00	89.53	270.12	7,092.26	-1,854.54	-2,736.26	2,732.37	0.00	0.00	0.00	
11,200.00	89.53	270.12	7,093.09	-1,854.33	-2,836.26	2,832.37	0.00	0.00	0.00	
11,300.00	89.53	270.12	7,093.91	-1,854.12	-2,936.25	2,932.36	0.00	0.00	0.00	
11,400.00	89.53	270.12	7,094.74	-1,853.91	-3,036.25	3,032.36	0.00	0.00	0.00	
11,500.00	89.53	270.12	7,095.57	-1,853.70	-3,136.24	3,132.36	0.00	0.00	0.00	
11,600.00	89.53	270.12	7,096.39	-1,853.49	-3,236.24	3,232.35	0.00	0.00	0.00	
11,700.00	89.53	270.12	7,097.22	-1,853.28	-3,336.24	3,332.35	0.00	0.00	0.00	
11,800.00	89.53	270.12	7,098.04	-1,853.08	-3,436.23	3,432.35	0.00	0.00	0.00	
11,900.00	89.53	270.12	7,098.87	-1,852.87	-3,536.23	3,532.34	0.00	0.00	0.00	
12,000.00	89.53	270.12	7,099.69	-1,852.66	-3,636.23	3,632.34	0.00	0.00	0.00	
12,100.00	89.53	270.12	7,100.52	-1,852.45	-3,736.22	3,732.34	0.00	0.00	0.00	
12,200.00	89.53	270.12	7,101.35	-1,852.24	-3,836.22	3,832.33	0.00	0.00	0.00	
12,300.00	89.53	270.12	7,102.17	-1,852.03	-3,936.22	3,932.33	0.00	0.00	0.00	
12,400.00	89.53	270.12	7,103.00	-1,851.82	-4,036.21	4,032.32	0.00	0.00	0.00	
12,500.00	89.53	270.12	7,103.82	-1,851.61	-4,136.21	4,132.32	0.00	0.00	0.00	
12,600.00	89.53	270.12	7,104.65	-1,851.40	-4,236.20	4,232.32	0.00	0.00	0.00	
12,700.00	89.53	270.12	7,105.48	-1,851.19	-4,336.20	4,332.31	0.00	0.00	0.00	
12,800.00	89.53	270.12	7,106.30	-1,850.98	-4,436.20	4,432.31	0.00	0.00	0.00	
12,900.00	89.53	270.12	7,107.13	-1,850.77	-4,536.19	4,532.31	0.00	0.00	0.00	
13,000.00	89.53	270.12	7,107.95	-1,850.57	-4,636.19	4,632.30	0.00	0.00	0.00	
13,100.00	89.53	270.12	7,108.78	-1,850.36	-4,736.19	4,732.30	0.00	0.00	0.00	
13,200.00	89.53	270.12	7,109.61	-1,850.15	-4,836.18	4,832.30	0.00	0.00	0.00	
13,300.00	89.53	270.12	7,110.43	-1,849.94	-4,936.18	4,932.29	0.00	0.00	0.00	
13,368.87	89.53	270.12	7,111.00	-1,849.79	-5,005.04	5,001.16	0.00	0.00	0.00	
TD at 13368.87 - PBHL_Falken 30N-14B-S(129' FNL & 50' FWL)										

Design Targets										
Target Name	Dip Angle (°)	Dip Dir. (°)	TVD (ft)	+N/-S (ft)	+E/-W (ft)	Northing (ft)	Easting (ft)	Latitude		
TOP_Falken 30N-14B-S	0.00	0.00	7,065.00	-1,863.77	564.31	1,424,160.28	3,213,064.86	40.4951870		
- hit/miss target										
- Shape										
- plan misses target center by 2.33ft at 7799.36ft MD (7065.00 TVD, -1861.44 N, 564.26 E)										
- Point										
PBHL_Falken 30N-14B-	0.00	0.00	7,111.00	-1,849.79	-5,005.04	1,424,126.27	3,207,495.60	40.4952240		
- plan hits target center										
- Point										

Database:	EDM 5000.14 Single User Db	Local Co-ordinate Reference:	Well Falken 30N-14B-S
Company:	Synergy Resources Corporation	TVD Reference:	GL 4810 & KB 20 @ 4830.00ft (ASSUMED)
Project:	SEC 12-13 T6N R66W	MD Reference:	GL 4810 & KB 20 @ 4830.00ft (ASSUMED)
Site:	Falken 9-11 PAD	North Reference:	True
Well:	Falken 30N-14B-S	Survey Calculation Method:	Minimum Curvature
Wellbore:	OH		
Design:	Plan #1		

Casing Points					
Measured Depth (ft)	Vertical Depth (ft)	Name		Casing Diameter (in)	Hole Diameter (in)
1,806.12	1,750.00	9 5/8"		9.625	13.500

Plan Annotations					
Measured Depth (ft)	Vertical Depth (ft)	Local Coordinates		Comment	
		+N/-S (ft)	+E/-W (ft)		
200.00	200.00	0.00	0.00	Start Build 2.00	
1,191.50	1,171.82	-138.04	99.01	Start 5485.83 hold at 1191.50 MD	
6,677.33	6,332.36	-1,650.24	1,183.63	Start DLS 9.00 TFO 124.26	
7,799.36	7,065.00	-1,861.44	564.26	LP(139 FNL 300 FWL)	
13,368.87	7,111.00	-1,849.79	-5,005.04	TD at 13368.87	