



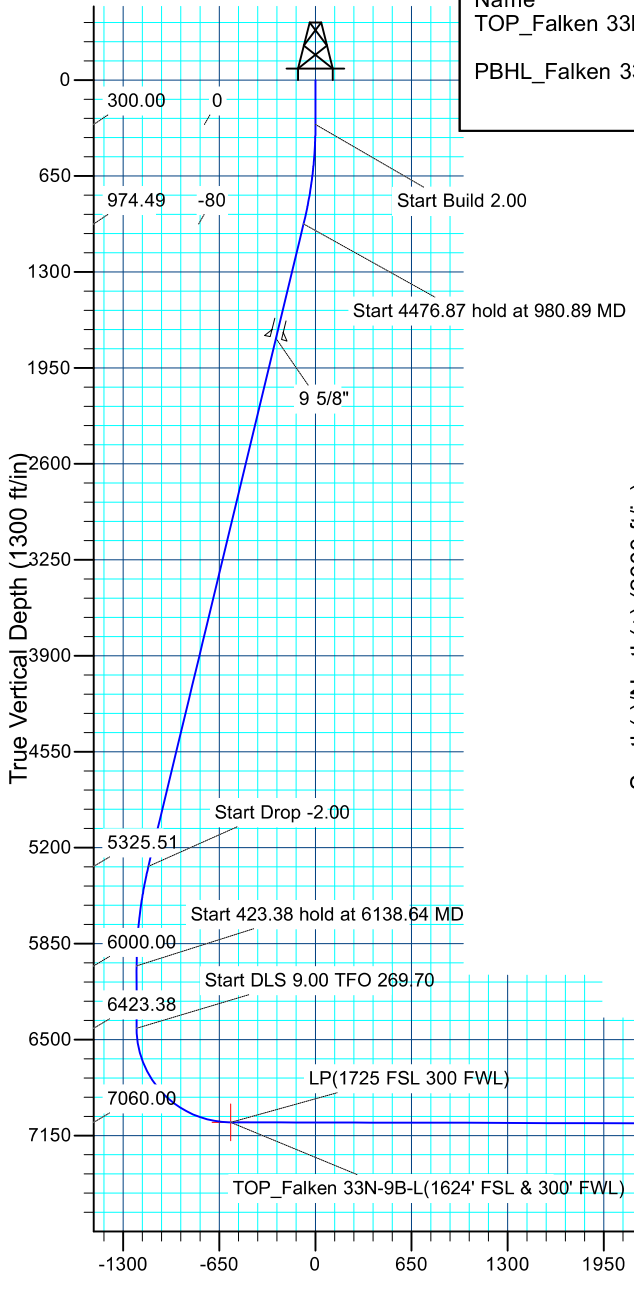
Project: SEC 12-13 T6N R66W
Site: Falken 9-11 PAD
Well: Falken 33N-9B-L
Wellbore: OH
Design: Plan #1

SECTION DETAILS									
MD	Inc	Azi	TVD	+N/-S	+E/-W	Dleg	TFace	VSect	Target
0.00	0.00	0.00	0.00	0.00	0.00	0.00	0.00	0.00	
300.00	0.00		300.00	0.00	0.00	0.00	0.00	0.00	
980.89	13.62	95.51	974.49	-7.73	80.16	2.00	95.51	-80.12	
5457.75	13.62	95.51	5325.51	-108.93	1129.34	0.00	0.00	-1128.75	
6138.64	0.00	0.00	6000.00	-116.66	1209.50	2.00	180.00	-1208.87	
6562.02	0.00	0.00	6423.38	-116.66	1209.50	0.00	0.00	-1208.87	
7560.55	89.87	269.70	7060.00	-119.99	574.36	9.00	269.70	-573.72	
18839.14	89.87	269.70	7086.00	-179.09	-10704.05	0.00	0.00	10704.84	PBHL_Falken 33N-9B-L

PROJECT DETAILS: SEC 12-13 T6N R66W

Geodetic System: US State Plane 1983
Datum: North American Datum 1983
Ellipsoid: GRS 1980
Zone: Colorado Northern Zone
Colorado Northern Zone
System Datum: Mean Sea Level

DESIGN TARGET DETAILS									
Name	TVD	+N/-S	+E/-W	Northing	Easting	Latitude	Longitude	Shape	
TOP_Falken 33N-9B-L	7060.00	-219.66	574.55	1425924.28	3213061.02	40.5000290	-104.7338810	Point	
- plan misses target center by 99.67ft at 7560.87ft MD (7060.00 TVD, -119.99 N, 574.03 E)									
PBHL_Falken 33N-9B-L	7086.00	-179.09	-10704.05	1425867.67	3201782.48	40.5001340	-104.7744370	Point	
- plan hits target center									



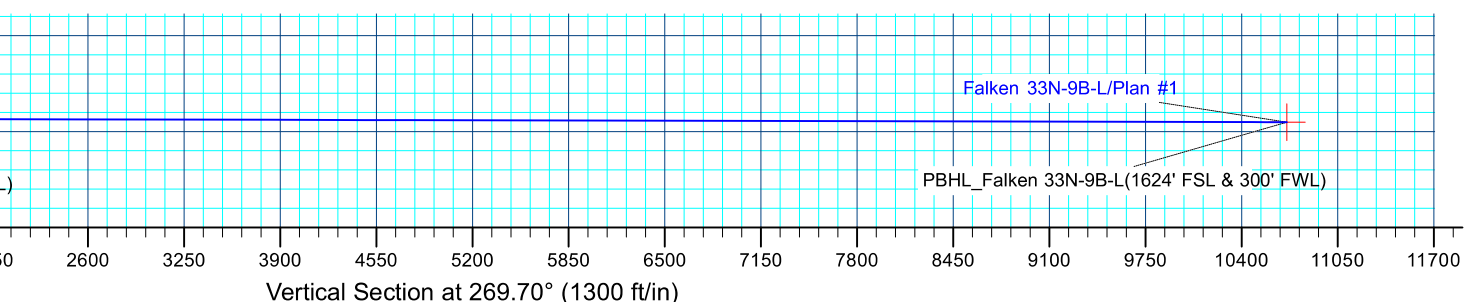
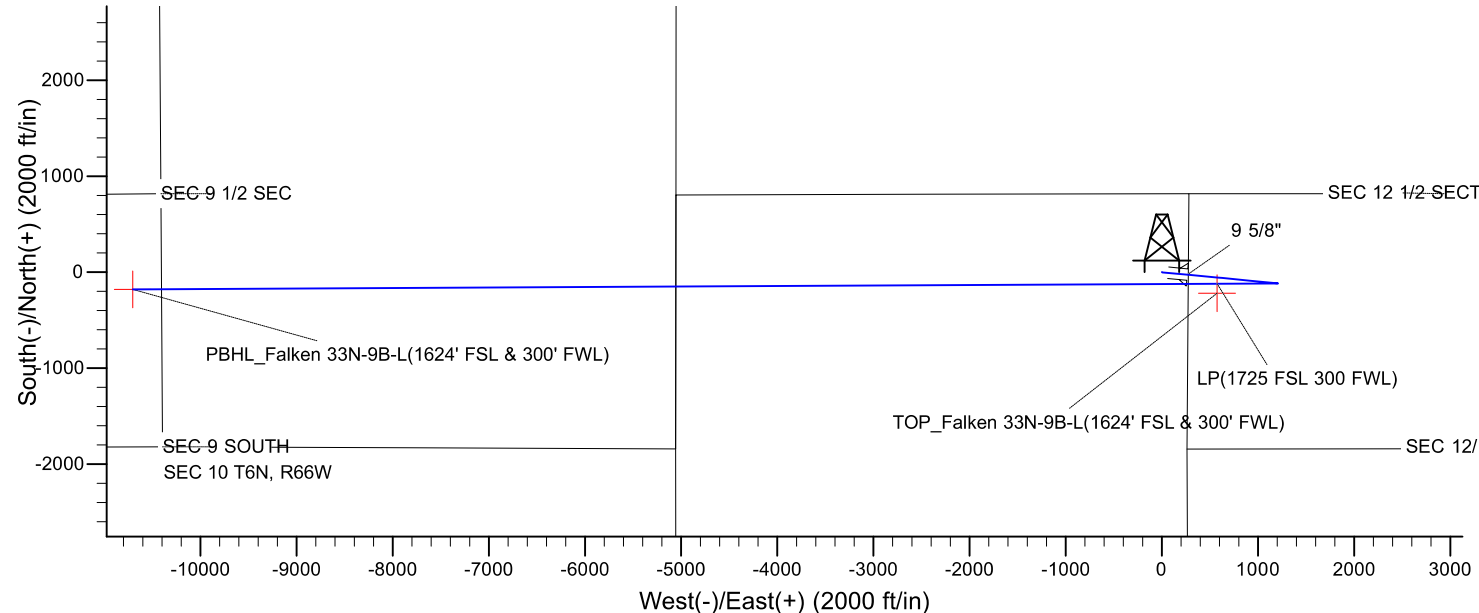
CASING DETAILS			
TVD	MD	Name	Size
1750.00	1778.82	9 5/8"	9.625

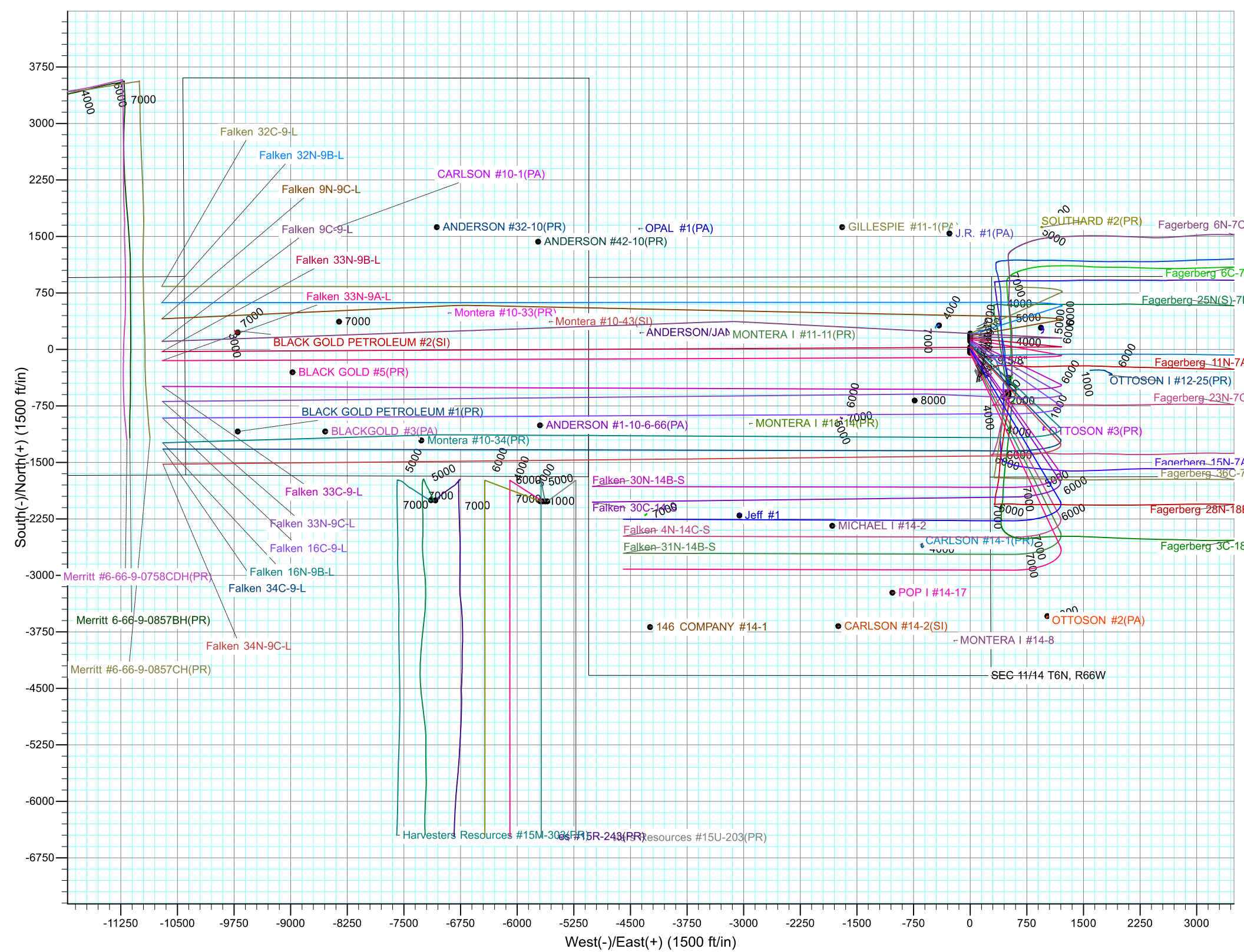
T

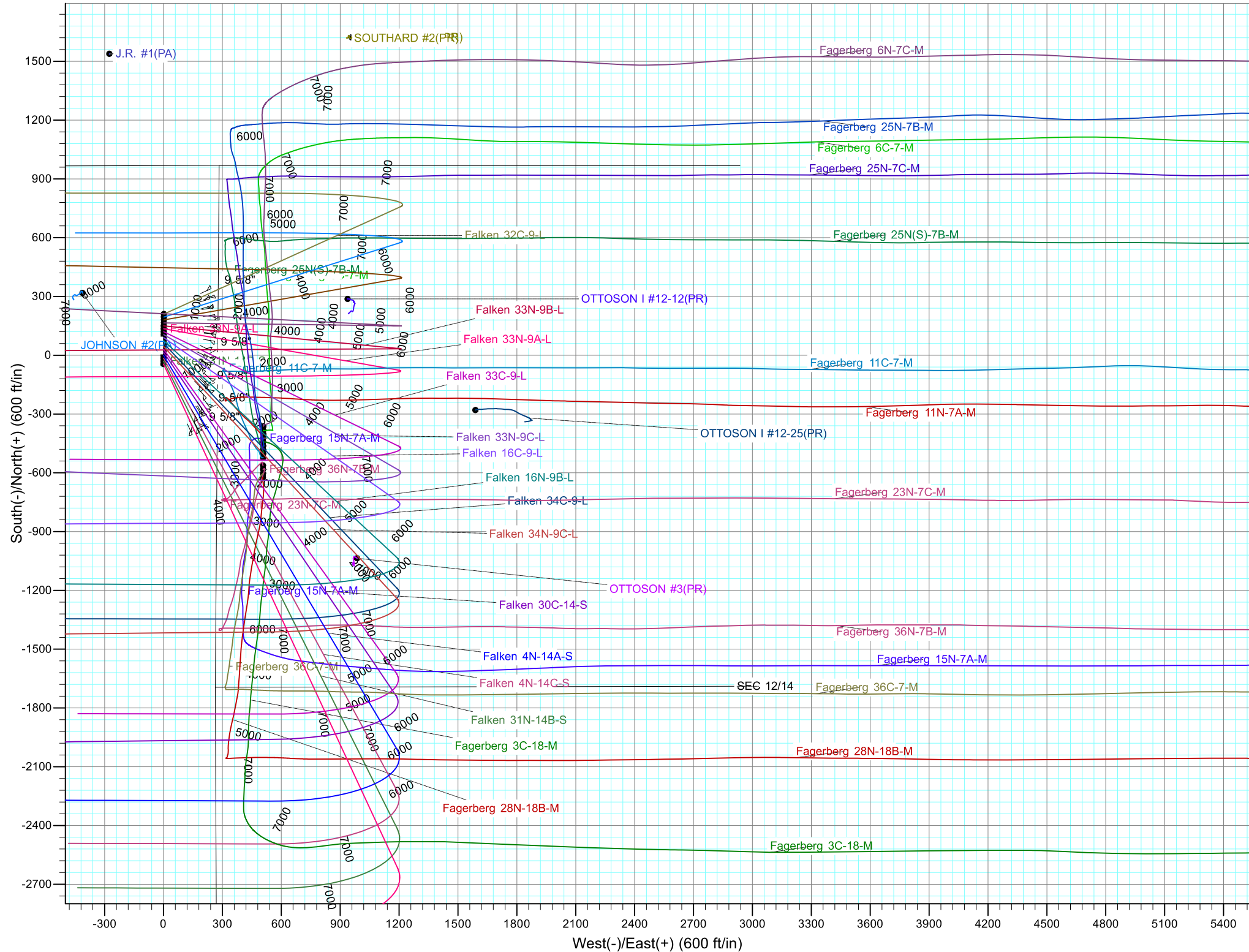
M

Azimuths to True North
Magnetic North: 8.22°

Magnetic Field
Strength: 52465.4snT
Dip Angle: 66.94°
Date: 4/21/2017
Model: IGRF2015









Synergy Resources Corporation

SEC 12-13 T6N R66W

Falken 9-11 PAD

Falken 33N-9B-L

OH

Plan: Plan #1

Standard Planning Report

25 April, 2017



Database:	EDM 5000.14 Single User Db	Local Co-ordinate Reference:	Well Falken 33N-9B-L
Company:	Synergy Resources Corporation	TVD Reference:	GL 4810 & KB 20 @ 4830.00ft (ASSUMED)
Project:	SEC 12-13 T6N R66W	MD Reference:	GL 4810 & KB 20 @ 4830.00ft (ASSUMED)
Site:	Falken 9-11 PAD	North Reference:	True
Well:	Falken 33N-9B-L	Survey Calculation Method:	Minimum Curvature
Wellbore:	OH		
Design:	Plan #1		

Project	SEC 12-13 T6N R66W		
Map System:	US State Plane 1983	System Datum:	Mean Sea Level
Geo Datum:	North American Datum 1983		
Map Zone:	Colorado Northern Zone		

Site		Falken 9-11 PAD			
Site Position:		Northing:	1,426,199.10 ft	Latitude:	40.5007970
From:	Lat/Long	Easting:	3,212,484.63 ft	Longitude:	-104.7359450
Position Uncertainty:	3.28 ft	Slot Radius:	13.200 in	Grid Convergence:	0.49 °

Well	Falken 33N-9B-L, 1844' FSL & 276' FEL					
Well Position	+N/-S	-60.12 ft	Northing:	1,426,138.98 ft	Latitude:	40.5006320
	+E/-W	-0.56 ft	Easting:	3,212,484.59 ft	Longitude:	-104.7359470
Position Uncertainty		3.28 ft	Wellhead Elevation:		Ground Level:	4,810.00 ft

Wellbore	OH				
Magnetics	Model Name	Sample Date	Declination (°)	Dip Angle (°)	Field Strength (nT)
	IGRF2015	4/21/2017	8.22	66.94	52,465

Design	Plan #1			
Audit Notes:				
Version:	Phase:	PLAN	Tie On Depth:	0.00
Vertical Section:	Depth From (TVD) (ft)	+N/-S (ft)	+E/-W (ft)	Direction (°)
	0.00	0.00	0.00	269.70

Plan Survey Tool Program	Date	4/24/2017		
Depth From (ft)	Depth To (ft)	Survey (Wellbore)	Tool Name	Remarks
1	0.00	18,838.78 Plan #1 (OH)	MWD+IFR1	
			OWSG MWD + IFR1	

Plan Sections										
Measured Depth (ft)	Inclination (°)	Azimuth (°)	Vertical Depth (ft)	+N/-S (ft)	+E/-W (ft)	Dogleg Rate (°/100ft)	Build Rate (°/100ft)	Turn Rate (°/100ft)	TFO (°)	Target
0.00	0.00	0.00	0.00	0.00	0.00	0.00	0.00	0.00	0.00	
300.00	0.00	0.00	300.00	0.00	0.00	0.00	0.00	0.00	0.00	
980.89	13.62	95.51	974.49	-7.73	80.16	2.00	2.00	0.00	95.51	
5,457.75	13.62	95.51	5,325.51	-108.93	1,129.34	0.00	0.00	0.00	0.00	
6,138.64	0.00	0.00	6,000.00	-116.66	1,209.50	2.00	-2.00	0.00	180.00	
6,562.02	0.00	0.00	6,423.38	-116.66	1,209.50	0.00	0.00	0.00	0.00	
7,560.55	89.87	269.70	7,060.00	-119.99	574.36	9.00	9.00	-9.04	269.70	
18,839.14	89.87	269.70	7,086.00	-179.09	-10,704.05	0.00	0.00	0.00	0.00	PBHL_Falken 33N-9E

Database:	EDM 5000.14 Single User Db	Local Co-ordinate Reference:	Well Falken 33N-9B-L
Company:	Synergy Resources Corporation	TVD Reference:	GL 4810 & KB 20 @ 4830.00ft (ASSUMED)
Project:	SEC 12-13 T6N R66W	MD Reference:	GL 4810 & KB 20 @ 4830.00ft (ASSUMED)
Site:	Falken 9-11 PAD	North Reference:	True
Well:	Falken 33N-9B-L	Survey Calculation Method:	Minimum Curvature
Wellbore:	OH		
Design:	Plan #1		

Planned Survey									
Measured Depth (ft)	Inclination (°)	Azimuth (°)	Vertical Depth (ft)	+N/-S (ft)	+E/-W (ft)	Vertical Section (ft)	Dogleg Rate (°/100ft)	Build Rate (°/100ft)	Turn Rate (°/100ft)
0.00	0.00	0.00	0.00	0.00	0.00	0.00	0.00	0.00	0.00
100.00	0.00	0.00	100.00	0.00	0.00	0.00	0.00	0.00	0.00
200.00	0.00	0.00	200.00	0.00	0.00	0.00	0.00	0.00	0.00
300.00	0.00	0.00	300.00	0.00	0.00	0.00	0.00	0.00	0.00
Start Build 2.00									
400.00	2.00	95.51	399.98	-0.17	1.74	-1.74	2.00	2.00	0.00
500.00	4.00	95.51	499.84	-0.67	6.95	-6.94	2.00	2.00	0.00
600.00	6.00	95.51	599.45	-1.51	15.62	-15.61	2.00	2.00	0.00
700.00	8.00	95.51	698.70	-2.68	27.75	-27.74	2.00	2.00	0.00
800.00	10.00	95.51	797.47	-4.18	43.32	-43.30	2.00	2.00	0.00
900.00	12.00	95.51	895.62	-6.01	62.31	-62.28	2.00	2.00	0.00
980.89	13.62	95.51	974.49	-7.73	80.16	-80.12	2.00	2.00	0.00
Start 4476.87 hold at 980.89 MD									
1,000.00	13.62	95.51	993.07	-8.16	84.64	-84.60	0.00	0.00	0.00
1,100.00	13.62	95.51	1,090.26	-10.42	108.08	-108.02	0.00	0.00	0.00
1,200.00	13.62	95.51	1,187.45	-12.68	131.51	-131.44	0.00	0.00	0.00
1,300.00	13.62	95.51	1,284.64	-14.95	154.95	-154.87	0.00	0.00	0.00
1,400.00	13.62	95.51	1,381.83	-17.21	178.38	-178.29	0.00	0.00	0.00
1,500.00	13.62	95.51	1,479.01	-19.47	201.82	-201.71	0.00	0.00	0.00
1,600.00	13.62	95.51	1,576.20	-21.73	225.25	-225.14	0.00	0.00	0.00
1,700.00	13.62	95.51	1,673.39	-23.99	248.69	-248.56	0.00	0.00	0.00
1,778.82	13.62	95.51	1,750.00	-25.77	267.16	-267.02	0.00	0.00	0.00
9 5/8"									
1,800.00	13.62	95.51	1,770.58	-26.25	272.13	-271.98	0.00	0.00	0.00
1,900.00	13.62	95.51	1,867.77	-28.51	295.56	-295.41	0.00	0.00	0.00
2,000.00	13.62	95.51	1,964.96	-30.77	319.00	-318.83	0.00	0.00	0.00
2,100.00	13.62	95.51	2,062.15	-33.03	342.43	-342.25	0.00	0.00	0.00
2,200.00	13.62	95.51	2,159.34	-35.29	365.87	-365.68	0.00	0.00	0.00
2,300.00	13.62	95.51	2,256.53	-37.55	389.30	-389.10	0.00	0.00	0.00
2,400.00	13.62	95.51	2,353.71	-39.81	412.74	-412.52	0.00	0.00	0.00
2,500.00	13.62	95.51	2,450.90	-42.07	436.17	-435.95	0.00	0.00	0.00
2,600.00	13.62	95.51	2,548.09	-44.33	459.61	-459.37	0.00	0.00	0.00
2,700.00	13.62	95.51	2,645.28	-46.59	483.05	-482.79	0.00	0.00	0.00
2,800.00	13.62	95.51	2,742.47	-48.85	506.48	-506.22	0.00	0.00	0.00
2,900.00	13.62	95.51	2,839.66	-51.11	529.92	-529.64	0.00	0.00	0.00
3,000.00	13.62	95.51	2,936.85	-53.37	553.35	-553.06	0.00	0.00	0.00
3,100.00	13.62	95.51	3,034.04	-55.63	576.79	-576.49	0.00	0.00	0.00
3,200.00	13.62	95.51	3,131.22	-57.89	600.22	-599.91	0.00	0.00	0.00
3,300.00	13.62	95.51	3,228.41	-60.15	623.66	-623.33	0.00	0.00	0.00
3,400.00	13.62	95.51	3,325.60	-62.41	647.09	-646.76	0.00	0.00	0.00
3,500.00	13.62	95.51	3,422.79	-64.67	670.53	-670.18	0.00	0.00	0.00
3,600.00	13.62	95.51	3,519.98	-66.94	693.96	-693.60	0.00	0.00	0.00
3,700.00	13.62	95.51	3,617.17	-69.20	717.40	-717.03	0.00	0.00	0.00
3,800.00	13.62	95.51	3,714.36	-71.46	740.84	-740.45	0.00	0.00	0.00
3,900.00	13.62	95.51	3,811.55	-73.72	764.27	-763.87	0.00	0.00	0.00
4,000.00	13.62	95.51	3,908.74	-75.98	787.71	-787.30	0.00	0.00	0.00
4,100.00	13.62	95.51	4,005.92	-78.24	811.14	-810.72	0.00	0.00	0.00
4,200.00	13.62	95.51	4,103.11	-80.50	834.58	-834.14	0.00	0.00	0.00
4,300.00	13.62	95.51	4,200.30	-82.76	858.01	-857.57	0.00	0.00	0.00
4,400.00	13.62	95.51	4,297.49	-85.02	881.45	-880.99	0.00	0.00	0.00
4,500.00	13.62	95.51	4,394.68	-87.28	904.88	-904.41	0.00	0.00	0.00
4,600.00	13.62	95.51	4,491.87	-89.54	928.32	-927.84	0.00	0.00	0.00
4,700.00	13.62	95.51	4,589.06	-91.80	951.76	-951.26	0.00	0.00	0.00

Database:	EDM 5000.14 Single User Db	Local Co-ordinate Reference:	Well Falken 33N-9B-L
Company:	Synergy Resources Corporation	TVD Reference:	GL 4810 & KB 20 @ 4830.00ft (ASSUMED)
Project:	SEC 12-13 T6N R66W	MD Reference:	GL 4810 & KB 20 @ 4830.00ft (ASSUMED)
Site:	Falken 9-11 PAD	North Reference:	True
Well:	Falken 33N-9B-L	Survey Calculation Method:	Minimum Curvature
Wellbore:	OH		
Design:	Plan #1		

Planned Survey									
Measured Depth (ft)	Inclination (°)	Azimuth (°)	Vertical Depth (ft)	+N/-S (ft)	+E/-W (ft)	Vertical Section (ft)	Dogleg Rate (°/100ft)	Build Rate (°/100ft)	Turn Rate (°/100ft)
4,800.00	13.62	95.51	4,686.25	-94.06	975.19	-974.68	0.00	0.00	0.00
4,900.00	13.62	95.51	4,783.43	-96.32	998.63	-998.11	0.00	0.00	0.00
5,000.00	13.62	95.51	4,880.62	-98.58	1,022.06	-1,021.53	0.00	0.00	0.00
5,100.00	13.62	95.51	4,977.81	-100.84	1,045.50	-1,044.95	0.00	0.00	0.00
5,200.00	13.62	95.51	5,075.00	-103.10	1,068.93	-1,068.38	0.00	0.00	0.00
5,300.00	13.62	95.51	5,172.19	-105.36	1,092.37	-1,091.80	0.00	0.00	0.00
5,400.00	13.62	95.51	5,269.38	-107.62	1,115.80	-1,115.22	0.00	0.00	0.00
5,457.75	13.62	95.51	5,325.51	-108.93	1,129.34	-1,128.75	0.00	0.00	0.00
Start Drop -2.00									
5,500.00	12.77	95.51	5,366.64	-109.85	1,138.94	-1,138.35	2.00	-2.00	0.00
5,600.00	10.77	95.51	5,464.53	-111.81	1,159.25	-1,158.64	2.00	-2.00	0.00
5,700.00	8.77	95.51	5,563.07	-113.44	1,176.14	-1,175.53	2.00	-2.00	0.00
5,800.00	6.77	95.51	5,662.15	-114.74	1,189.60	-1,188.98	2.00	-2.00	0.00
5,900.00	4.77	95.51	5,761.64	-115.71	1,199.61	-1,198.99	2.00	-2.00	0.00
6,000.00	2.77	95.51	5,861.42	-116.34	1,206.16	-1,205.54	2.00	-2.00	0.00
6,100.00	0.77	95.51	5,961.36	-116.63	1,209.24	-1,208.61	2.00	-2.00	0.00
6,138.64	0.00	0.00	6,000.00	-116.66	1,209.50	-1,208.87	2.00	-2.00	0.00
Start 423.38 hold at 6138.64 MD									
6,200.00	0.00	0.00	6,061.36	-116.66	1,209.50	-1,208.87	0.00	0.00	0.00
6,300.00	0.00	0.00	6,161.36	-116.66	1,209.50	-1,208.87	0.00	0.00	0.00
6,400.00	0.00	0.00	6,261.36	-116.66	1,209.50	-1,208.87	0.00	0.00	0.00
6,500.00	0.00	0.00	6,361.36	-116.66	1,209.50	-1,208.87	0.00	0.00	0.00
6,562.02	0.00	0.00	6,423.38	-116.66	1,209.50	-1,208.87	0.00	0.00	0.00
Start DLS 9.00 TFO 269.70									
6,600.00	3.42	269.70	6,461.34	-116.67	1,208.37	-1,207.74	9.00	9.00	0.00
6,700.00	12.42	269.70	6,560.29	-116.74	1,194.61	-1,193.98	9.00	9.00	0.00
6,800.00	21.42	269.70	6,655.86	-116.89	1,165.53	-1,164.91	9.00	9.00	0.00
6,900.00	30.42	269.70	6,745.71	-117.12	1,121.87	-1,121.24	9.00	9.00	0.00
7,000.00	39.42	269.70	6,827.62	-117.42	1,064.69	-1,064.06	9.00	9.00	0.00
7,100.00	48.42	269.70	6,899.58	-117.78	995.40	-994.77	9.00	9.00	0.00
7,200.00	57.42	269.70	6,959.81	-118.20	915.70	-915.07	9.00	9.00	0.00
7,300.00	66.42	269.70	7,006.84	-118.66	827.57	-826.94	9.00	9.00	0.00
7,400.00	75.42	269.70	7,039.49	-119.16	733.16	-732.53	9.00	9.00	0.00
7,500.00	84.42	269.70	7,056.98	-119.67	634.81	-634.17	9.00	9.00	0.00
7,560.55	89.87	269.70	7,060.00	-119.99	574.36	-573.72	9.00	9.00	0.00
LP(1725 FSL 300 FWL)									
7,560.87	89.87	269.70	7,060.00	-119.99	574.03	-573.40	0.00	0.00	0.00
TOP_Falken 33N-9B-L(1624' FSL & 300' FWL)									
7,600.00	89.87	269.70	7,060.09	-120.19	534.91	-534.27	0.00	0.00	0.00
7,700.00	89.87	269.70	7,060.32	-120.72	434.91	-434.27	0.00	0.00	0.00
7,800.00	89.87	269.70	7,060.55	-121.24	334.91	-334.27	0.00	0.00	0.00
7,900.00	89.87	269.70	7,060.78	-121.77	234.91	-234.27	0.00	0.00	0.00
8,000.00	89.87	269.70	7,061.01	-122.29	134.91	-134.27	0.00	0.00	0.00
8,100.00	89.87	269.70	7,061.24	-122.82	34.91	-34.27	0.00	0.00	0.00
8,200.00	89.87	269.70	7,061.47	-123.34	-65.08	65.73	0.00	0.00	0.00
8,300.00	89.87	269.70	7,061.70	-123.86	-165.08	165.73	0.00	0.00	0.00
8,400.00	89.87	269.70	7,061.93	-124.39	-265.08	265.73	0.00	0.00	0.00
8,500.00	89.87	269.70	7,062.16	-124.91	-365.08	365.73	0.00	0.00	0.00
8,600.00	89.87	269.70	7,062.39	-125.44	-465.08	465.73	0.00	0.00	0.00
8,700.00	89.87	269.70	7,062.63	-125.96	-565.08	565.73	0.00	0.00	0.00
8,800.00	89.87	269.70	7,062.86	-126.48	-665.07	665.73	0.00	0.00	0.00
8,900.00	89.87	269.70	7,063.09	-127.01	-765.07	765.73	0.00	0.00	0.00
9,000.00	89.87	269.70	7,063.32	-127.53	-865.07	865.73	0.00	0.00	0.00
9,100.00	89.87	269.70	7,063.55	-128.06	-965.07	965.73	0.00	0.00	0.00

Database:	EDM 5000.14 Single User Db	Local Co-ordinate Reference:	Well Falken 33N-9B-L
Company:	Synergy Resources Corporation	TVD Reference:	GL 4810 & KB 20 @ 4830.00ft (ASSUMED)
Project:	SEC 12-13 T6N R66W	MD Reference:	GL 4810 & KB 20 @ 4830.00ft (ASSUMED)
Site:	Falken 9-11 PAD	North Reference:	True
Well:	Falken 33N-9B-L	Survey Calculation Method:	Minimum Curvature
Wellbore:	OH		
Design:	Plan #1		

Planned Survey									
Measured Depth (ft)	Inclination (°)	Azimuth (°)	Vertical Depth (ft)	+N/-S (ft)	+E/-W (ft)	Vertical Section (ft)	Dogleg Rate (°/100ft)	Build Rate (°/100ft)	Turn Rate (°/100ft)
9,200.00	89.87	269.70	7,063.78	-128.58	-1,065.07	1,065.73	0.00	0.00	0.00
9,300.00	89.87	269.70	7,064.01	-129.10	-1,165.07	1,165.73	0.00	0.00	0.00
9,400.00	89.87	269.70	7,064.24	-129.63	-1,265.06	1,265.73	0.00	0.00	0.00
9,500.00	89.87	269.70	7,064.47	-130.15	-1,365.06	1,365.72	0.00	0.00	0.00
9,600.00	89.87	269.70	7,064.70	-130.68	-1,465.06	1,465.72	0.00	0.00	0.00
9,700.00	89.87	269.70	7,064.93	-131.20	-1,565.06	1,565.72	0.00	0.00	0.00
9,800.00	89.87	269.70	7,065.16	-131.72	-1,665.06	1,665.72	0.00	0.00	0.00
9,900.00	89.87	269.70	7,065.39	-132.25	-1,765.06	1,765.72	0.00	0.00	0.00
10,000.00	89.87	269.70	7,065.62	-132.77	-1,865.05	1,865.72	0.00	0.00	0.00
10,100.00	89.87	269.70	7,065.85	-133.30	-1,965.05	1,965.72	0.00	0.00	0.00
10,200.00	89.87	269.70	7,066.08	-133.82	-2,065.05	2,065.72	0.00	0.00	0.00
10,300.00	89.87	269.70	7,066.31	-134.34	-2,165.05	2,165.72	0.00	0.00	0.00
10,400.00	89.87	269.70	7,066.54	-134.87	-2,265.05	2,265.72	0.00	0.00	0.00
10,500.00	89.87	269.70	7,066.77	-135.39	-2,365.05	2,365.72	0.00	0.00	0.00
10,600.00	89.87	269.70	7,067.01	-135.92	-2,465.04	2,465.72	0.00	0.00	0.00
10,700.00	89.87	269.70	7,067.24	-136.44	-2,565.04	2,565.72	0.00	0.00	0.00
10,800.00	89.87	269.70	7,067.47	-136.96	-2,665.04	2,665.72	0.00	0.00	0.00
10,900.00	89.87	269.70	7,067.70	-137.49	-2,765.04	2,765.72	0.00	0.00	0.00
11,000.00	89.87	269.70	7,067.93	-138.01	-2,865.04	2,865.72	0.00	0.00	0.00
11,100.00	89.87	269.70	7,068.16	-138.54	-2,965.04	2,965.72	0.00	0.00	0.00
11,200.00	89.87	269.70	7,068.39	-139.06	-3,065.03	3,065.72	0.00	0.00	0.00
11,300.00	89.87	269.70	7,068.62	-139.58	-3,165.03	3,165.72	0.00	0.00	0.00
11,400.00	89.87	269.70	7,068.85	-140.11	-3,265.03	3,265.72	0.00	0.00	0.00
11,500.00	89.87	269.70	7,069.08	-140.63	-3,365.03	3,365.72	0.00	0.00	0.00
11,600.00	89.87	269.70	7,069.31	-141.16	-3,465.03	3,465.72	0.00	0.00	0.00
11,700.00	89.87	269.70	7,069.54	-141.68	-3,565.03	3,565.72	0.00	0.00	0.00
11,800.00	89.87	269.70	7,069.77	-142.20	-3,665.02	3,665.72	0.00	0.00	0.00
11,900.00	89.87	269.70	7,070.00	-142.73	-3,765.02	3,765.72	0.00	0.00	0.00
12,000.00	89.87	269.70	7,070.23	-143.25	-3,865.02	3,865.72	0.00	0.00	0.00
12,100.00	89.87	269.70	7,070.46	-143.78	-3,965.02	3,965.72	0.00	0.00	0.00
12,200.00	89.87	269.70	7,070.69	-144.30	-4,065.02	4,065.72	0.00	0.00	0.00
12,300.00	89.87	269.70	7,070.92	-144.82	-4,165.02	4,165.72	0.00	0.00	0.00
12,400.00	89.87	269.70	7,071.16	-145.35	-4,265.01	4,265.72	0.00	0.00	0.00
12,500.00	89.87	269.70	7,071.39	-145.87	-4,365.01	4,365.72	0.00	0.00	0.00
12,600.00	89.87	269.70	7,071.62	-146.40	-4,465.01	4,465.72	0.00	0.00	0.00
12,700.00	89.87	269.70	7,071.85	-146.92	-4,565.01	4,565.72	0.00	0.00	0.00
12,800.00	89.87	269.70	7,072.08	-147.44	-4,665.01	4,665.72	0.00	0.00	0.00
12,900.00	89.87	269.70	7,072.31	-147.97	-4,765.01	4,765.72	0.00	0.00	0.00
13,000.00	89.87	269.70	7,072.54	-148.49	-4,865.00	4,865.72	0.00	0.00	0.00
13,100.00	89.87	269.70	7,072.77	-149.02	-4,965.00	4,965.72	0.00	0.00	0.00
13,200.00	89.87	269.70	7,073.00	-149.54	-5,065.00	5,065.72	0.00	0.00	0.00
13,300.00	89.87	269.70	7,073.23	-150.06	-5,165.00	5,165.71	0.00	0.00	0.00
13,400.00	89.87	269.70	7,073.46	-150.59	-5,265.00	5,265.71	0.00	0.00	0.00
13,500.00	89.87	269.70	7,073.69	-151.11	-5,365.00	5,365.71	0.00	0.00	0.00
13,600.00	89.87	269.70	7,073.92	-151.64	-5,465.00	5,465.71	0.00	0.00	0.00
13,700.00	89.87	269.70	7,074.15	-152.16	-5,564.99	5,565.71	0.00	0.00	0.00
13,800.00	89.87	269.70	7,074.38	-152.68	-5,664.99	5,665.71	0.00	0.00	0.00
13,900.00	89.87	269.70	7,074.61	-153.21	-5,764.99	5,765.71	0.00	0.00	0.00
14,000.00	89.87	269.70	7,074.84	-153.73	-5,864.99	5,865.71	0.00	0.00	0.00
14,100.00	89.87	269.70	7,075.07	-154.26	-5,964.99	5,965.71	0.00	0.00	0.00
14,200.00	89.87	269.70	7,075.30	-154.78	-6,064.99	6,065.71	0.00	0.00	0.00
14,300.00	89.87	269.70	7,075.54	-155.30	-6,164.98	6,165.71	0.00	0.00	0.00
14,400.00	89.87	269.70	7,075.77	-155.83	-6,264.98	6,265.71	0.00	0.00	0.00
14,500.00	89.87	269.70	7,076.00	-156.35	-6,364.98	6,365.71	0.00	0.00	0.00

Database:	EDM 5000.14 Single User Db	Local Co-ordinate Reference:	Well Falken 33N-9B-L
Company:	Synergy Resources Corporation	TVD Reference:	GL 4810 & KB 20 @ 4830.00ft (ASSUMED)
Project:	SEC 12-13 T6N R66W	MD Reference:	GL 4810 & KB 20 @ 4830.00ft (ASSUMED)
Site:	Falken 9-11 PAD	North Reference:	True
Well:	Falken 33N-9B-L	Survey Calculation Method:	Minimum Curvature
Wellbore:	OH		
Design:	Plan #1		

Planned Survey									
Measured Depth (ft)	Inclination (°)	Azimuth (°)	Vertical Depth (ft)	+N/-S (ft)	+E/-W (ft)	Vertical Section (ft)	Dogleg Rate (°/100ft)	Build Rate (°/100ft)	Turn Rate (°/100ft)
14,600.00	89.87	269.70	7,076.23	-156.88	-6,464.98	6,465.71	0.00	0.00	0.00
14,700.00	89.87	269.70	7,076.46	-157.40	-6,564.98	6,565.71	0.00	0.00	0.00
14,800.00	89.87	269.70	7,076.69	-157.92	-6,664.98	6,665.71	0.00	0.00	0.00
14,900.00	89.87	269.70	7,076.92	-158.45	-6,764.97	6,765.71	0.00	0.00	0.00
15,000.00	89.87	269.70	7,077.15	-158.97	-6,864.97	6,865.71	0.00	0.00	0.00
15,100.00	89.87	269.70	7,077.38	-159.50	-6,964.97	6,965.71	0.00	0.00	0.00
15,200.00	89.87	269.70	7,077.61	-160.02	-7,064.97	7,065.71	0.00	0.00	0.00
15,300.00	89.87	269.70	7,077.84	-160.54	-7,164.97	7,165.71	0.00	0.00	0.00
15,400.00	89.87	269.70	7,078.07	-161.07	-7,264.97	7,265.71	0.00	0.00	0.00
15,500.00	89.87	269.70	7,078.30	-161.59	-7,364.96	7,365.71	0.00	0.00	0.00
15,600.00	89.87	269.70	7,078.53	-162.12	-7,464.96	7,465.71	0.00	0.00	0.00
15,700.00	89.87	269.70	7,078.76	-162.64	-7,564.96	7,565.71	0.00	0.00	0.00
15,800.00	89.87	269.70	7,078.99	-163.16	-7,664.96	7,665.71	0.00	0.00	0.00
15,900.00	89.87	269.70	7,079.22	-163.69	-7,764.96	7,765.71	0.00	0.00	0.00
16,000.00	89.87	269.70	7,079.45	-164.21	-7,864.96	7,865.71	0.00	0.00	0.00
16,100.00	89.87	269.70	7,079.69	-164.74	-7,964.95	7,965.71	0.00	0.00	0.00
16,200.00	89.87	269.70	7,079.92	-165.26	-8,064.95	8,065.71	0.00	0.00	0.00
16,300.00	89.87	269.70	7,080.15	-165.78	-8,164.95	8,165.71	0.00	0.00	0.00
16,400.00	89.87	269.70	7,080.38	-166.31	-8,264.95	8,265.71	0.00	0.00	0.00
16,500.00	89.87	269.70	7,080.61	-166.83	-8,364.95	8,365.71	0.00	0.00	0.00
16,600.00	89.87	269.70	7,080.84	-167.36	-8,464.95	8,465.71	0.00	0.00	0.00
16,700.00	89.87	269.70	7,081.07	-167.88	-8,564.94	8,565.71	0.00	0.00	0.00
16,800.00	89.87	269.70	7,081.30	-168.40	-8,664.94	8,665.71	0.00	0.00	0.00
16,900.00	89.87	269.70	7,081.53	-168.93	-8,764.94	8,765.71	0.00	0.00	0.00
17,000.00	89.87	269.70	7,081.76	-169.45	-8,864.94	8,865.71	0.00	0.00	0.00
17,100.00	89.87	269.70	7,081.99	-169.98	-8,964.94	8,965.70	0.00	0.00	0.00
17,200.00	89.87	269.70	7,082.22	-170.50	-9,064.94	9,065.70	0.00	0.00	0.00
17,300.00	89.87	269.70	7,082.45	-171.02	-9,164.93	9,165.70	0.00	0.00	0.00
17,400.00	89.87	269.70	7,082.68	-171.55	-9,264.93	9,265.70	0.00	0.00	0.00
17,500.00	89.87	269.70	7,082.91	-172.07	-9,364.93	9,365.70	0.00	0.00	0.00
17,600.00	89.87	269.70	7,083.14	-172.60	-9,464.93	9,465.70	0.00	0.00	0.00
17,700.00	89.87	269.70	7,083.37	-173.12	-9,564.93	9,565.70	0.00	0.00	0.00
17,800.00	89.87	269.70	7,083.60	-173.64	-9,664.93	9,665.70	0.00	0.00	0.00
17,900.00	89.87	269.70	7,083.84	-174.17	-9,764.92	9,765.70	0.00	0.00	0.00
18,000.00	89.87	269.70	7,084.07	-174.69	-9,864.92	9,865.70	0.00	0.00	0.00
18,100.00	89.87	269.70	7,084.30	-175.22	-9,964.92	9,965.70	0.00	0.00	0.00
18,200.00	89.87	269.70	7,084.53	-175.74	-10,064.92	10,065.70	0.00	0.00	0.00
18,300.00	89.87	269.70	7,084.76	-176.26	-10,164.92	10,165.70	0.00	0.00	0.00
18,400.00	89.87	269.70	7,084.99	-176.79	-10,264.92	10,265.70	0.00	0.00	0.00
18,500.00	89.87	269.70	7,085.22	-177.31	-10,364.91	10,365.70	0.00	0.00	0.00
18,600.00	89.87	269.70	7,085.45	-177.84	-10,464.91	10,465.70	0.00	0.00	0.00
18,700.00	89.87	269.70	7,085.68	-178.36	-10,564.91	10,565.70	0.00	0.00	0.00
18,800.00	89.87	269.70	7,085.91	-178.88	-10,664.91	10,665.70	0.00	0.00	0.00
18,839.14	89.87	269.70	7,086.00	-179.09	-10,704.05	10,704.84	0.00	0.00	0.00
TD at 18839.14 - PBHL_Falken 33N-9B-L(1624' FSL & 300' FWL)									

Database:	EDM 5000.14 Single User Db	Local Co-ordinate Reference:	Well Falken 33N-9B-L
Company:	Synergy Resources Corporation	TVD Reference:	GL 4810 & KB 20 @ 4830.00ft (ASSUMED)
Project:	SEC 12-13 T6N R66W	MD Reference:	GL 4810 & KB 20 @ 4830.00ft (ASSUMED)
Site:	Falken 9-11 PAD	North Reference:	True
Well:	Falken 33N-9B-L	Survey Calculation Method:	Minimum Curvature
Wellbore:	OH		
Design:	Plan #1		

Design Targets									
Target Name									
- hit/miss target	Dip Angle	Dip Dir.	TVD	+N/-S	+E/-W	Northing	Easting	Latitude	Longitude
- Shape	(°)	(°)	(ft)	(ft)	(ft)	(ft)	(ft)		
TOP_Falken 33N-9B-L(1	0.00	0.00	7,060.00	-219.66	574.55	1,425,924.28	3,213,061.02	40.5000290	-104.7338810
- plan misses target center by 99.67ft at 7560.87ft MD (7060.00 TVD, -119.99 N, 574.03 E)									
- Point									
PBHL_Falken 33N-9B-L	0.00	0.00	7,086.00	-179.09	-10,704.05	1,425,867.67	3,201,782.48	40.5001340	-104.7744370
- plan hits target center									
- Point									

Casing Points					
Measured Depth	Vertical Depth			Casing Diameter	Hole Diameter
(ft)	(ft)		Name	(in)	(in)
1,778.82	1,750.00	9 5/8"		9.625	13.500

Plan Annotations				
Measured Depth	Vertical Depth	Local Coordinates		
(ft)	(ft)	+N/-S	+E/-W	Comment
(ft)	(ft)	(ft)	(ft)	
300.00	300.00	0.00	0.00	Start Build 2.00
980.89	974.49	-7.73	80.16	Start 4476.87 hold at 980.89 MD
5,457.75	5,325.51	-108.93	1,129.34	Start Drop -2.00
6,138.64	6,000.00	-116.66	1,209.50	Start 423.38 hold at 6138.64 MD
6,562.02	6,423.38	-116.66	1,209.50	Start DLS 9.00 TFO 269.70
7,560.55	7,060.00	-119.99	574.36	LP(1725 FSL 300 FWL)
18,839.14	7,086.00	-179.09	-10,704.05	TD at 18839.14