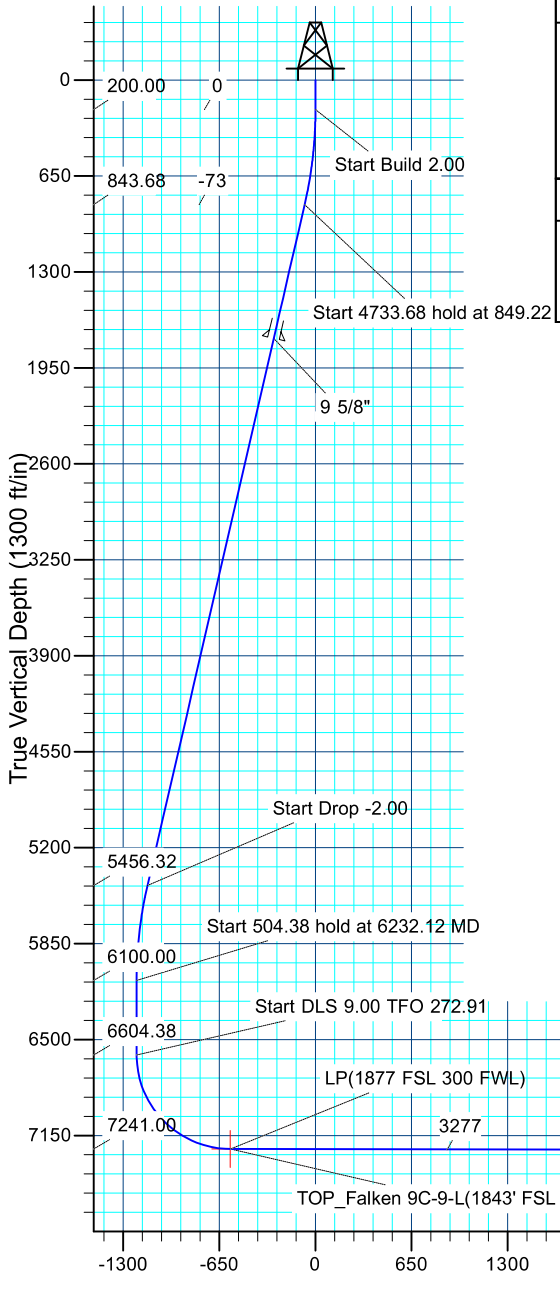




Project: SEC 12-13 T6N R66W
Site: Falken 9-11 PAD
Well: Falken 9C-9-L
Wellbore: OH
Design: Plan #1

SECTION DETAILS									
MD	Inc	Azi	TVD	+N/-S	+E/-W	Dleg	TFace	VSect	Target
0.00	0.00	0.00	0.00	0.00	0.00	0.00	0.00	0.00	
200.00	0.00	0.00	200.00	0.00	0.00	0.00	0.00	0.00	
849.22	12.98	90.71	843.68	-0.91	73.24	2.00	90.71	-73.20	
5582.90	12.98	90.71	5456.32	-14.09	1136.76	0.00	0.00	-1136.01	
6232.12	0.00	0.00	6100.00	-15.00	1210.00	2.00	180.00	-1209.20	
6736.50	0.00	0.00	6604.38	-15.00	1210.00	0.00	0.00	-1209.20	
7735.44	89.90	272.91	7241.00	17.22	575.26	9.00	272.91	-573.64	
11340.34	89.90	272.91	7247.00	200.00	-3025.00	0.00	0.00	3031.25	PBHL_Falken 9C-9-L
11586.15	89.90	267.99	7247.43	201.92	-3270.72	2.00	-90.11	3276.76	
19025.91	89.90	267.99	7261.00	-59.00	-10705.90	0.00	0.00	10689.10	

PROJECT DETAILS: SEC 12-13 T6N R66W									
Geodetic System: US State Plane 1983									
Datum: North American Datum 1983									
Ellipsoid: GRS 1980									
Zone: Colorado Northern Zone									
Colorado Northern Zone									
System Datum: Mean Sea Level									



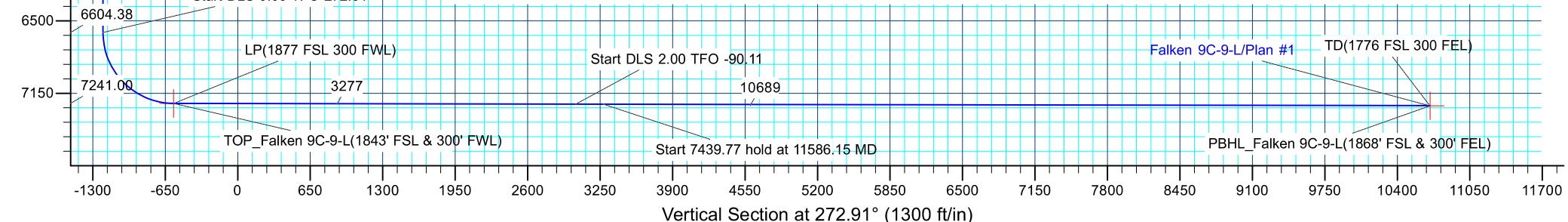
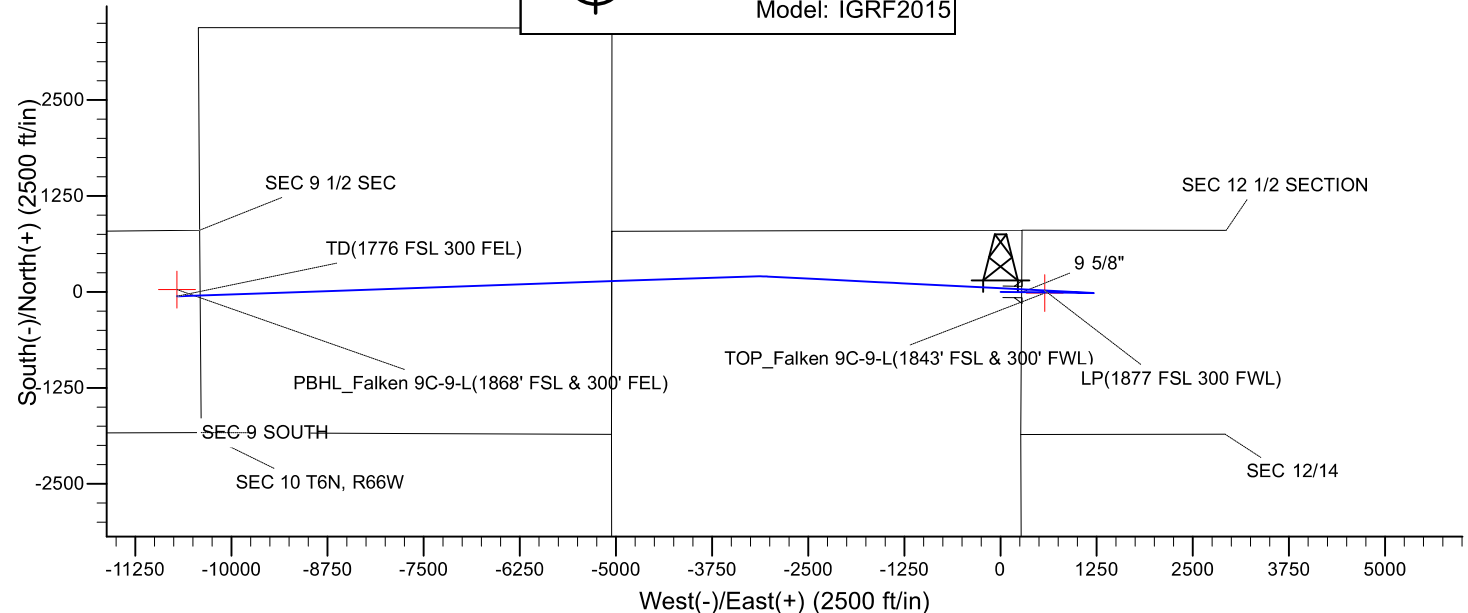
DESIGN TARGET DETAILS									
Name	TVD	+N/-S	+E/-W	Northing	Easting	Latitude	Longitude	Shape	
TOP_Falken 9C-9-L	7241.00	-16.02	575.66	1426143.23	3213060.52	40.5006300	-104.7338760	Point	
- plan misses target center by 33.18ft at 7733.35ft MD (7240.99 TVD, 17.12 N, 577.34 E)									
PBHL_Falken 9C-9-L	7261.00	29.65	-10705.90	1426091.69	3201778.98	40.5007490	-104.7744430	Point	
- plan misses target center by 88.60ft at 19022.80ft MD (7260.99 TVD, -58.89 N, -10702.79 E)									

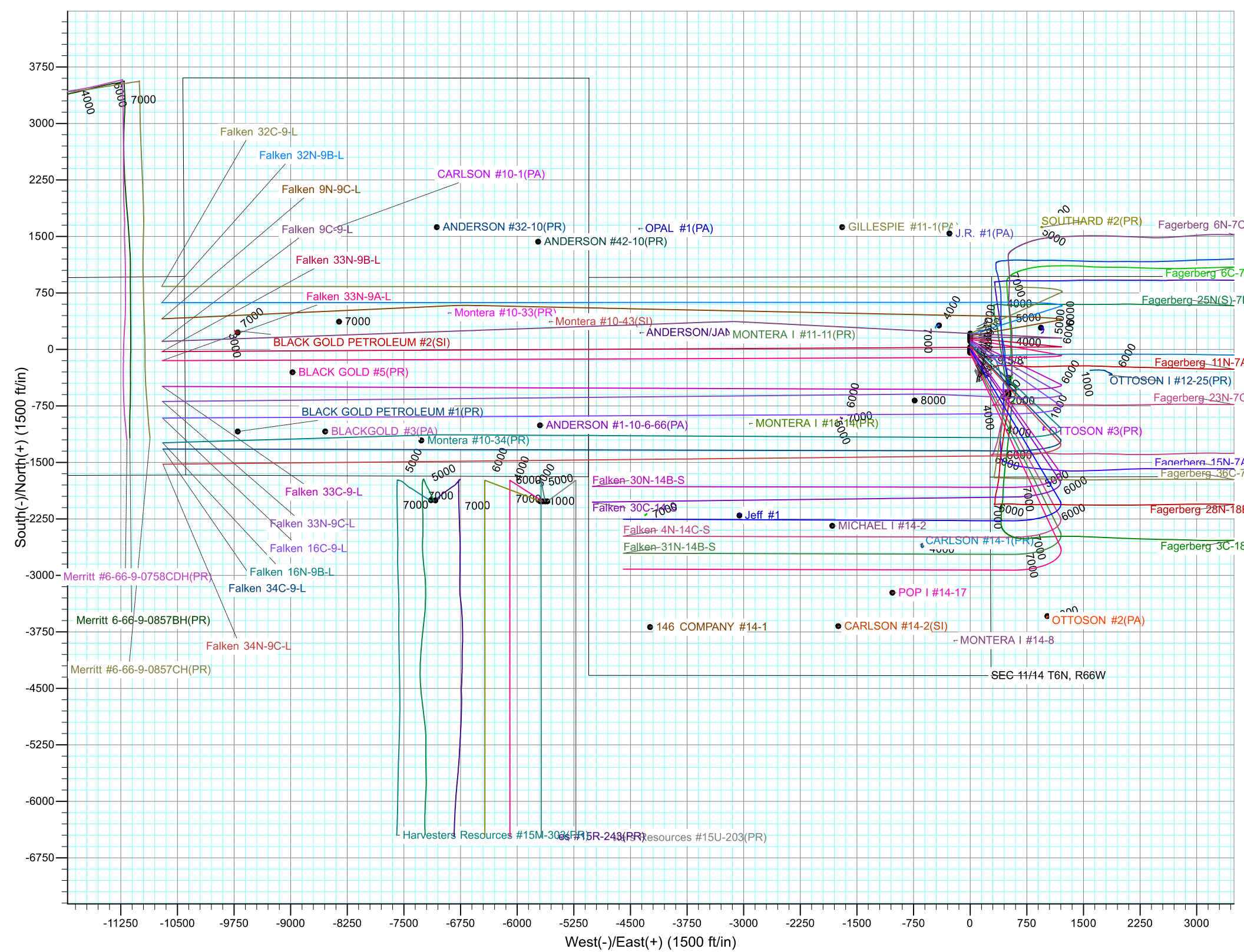
CASING DETAILS			
TVD	MD	Name	Size
1750.00	1779.32	9 5/8"	9.625

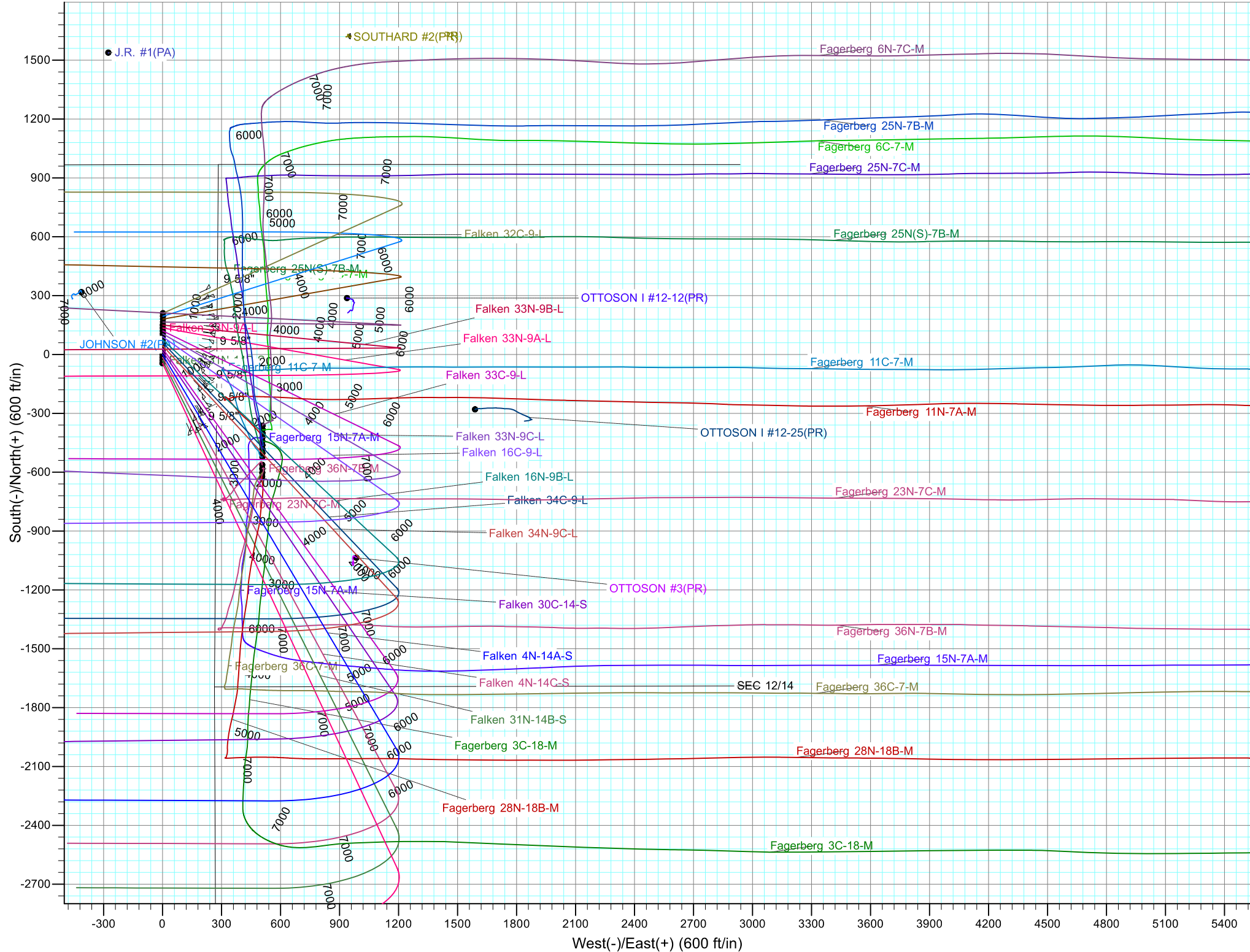
T
M

Azimuths to True North
Magnetic North: 8.22°

Magnetic Field
Strength: 52465.4snT
Dip Angle: 66.94°
Date: 4/21/2017
Model: IGRF2015









Synergy Resources Corporation

SEC 12-13 T6N R66W

Falken 9-11 PAD

Falken 9C-9-L

OH

Plan: Plan #1

Standard Planning Report

25 April, 2017



Database:	EDM 5000.14 Single User Db	Local Co-ordinate Reference:	Well Falken 9C-9-L
Company:	Synergy Resources Corporation	TVD Reference:	GL 4810 & KB 20 @ 4830.00ft (Original Well Elev)
Project:	SEC 12-13 T6N R66W	MD Reference:	GL 4810 & KB 20 @ 4830.00ft (Original Well Elev)
Site:	Falken 9-11 PAD	North Reference:	True
Well:	Falken 9C-9-L	Survey Calculation Method:	Minimum Curvature
Wellbore:	OH		
Design:	Plan #1		

Project	SEC 12-13 T6N R66W		
Map System:	US State Plane 1983	System Datum:	Mean Sea Level
Geo Datum:	North American Datum 1983		
Map Zone:	Colorado Northern Zone		

Site		Falken 9-11 PAD			
Site Position:		Northing:	1,426,199.10 ft	Latitude:	40.5007970
From:	Lat/Long	Easting:	3,212,484.63 ft	Longitude:	-104.7359450
Position Uncertainty:	3.28 ft	Slot Radius:	13.200 in	Grid Convergence:	0.49 °

Well	Falken 9C-9-L, 1859' FSL & 276' FEL					
Well Position	+N/-S	-44.81 ft	Northing:	1,426,154.29 ft	Latitude:	40.5006740
	+E/-W	-0.28 ft	Easting:	3,212,484.74 ft	Longitude:	-104.7359460
Position Uncertainty		3.28 ft	Wellhead Elevation:		Ground Level:	4,810.00 ft

Wellbore	OH				
Magnetics	Model Name	Sample Date	Declination (°)	Dip Angle (°)	Field Strength (nT)
	IGRF2015	4/21/2017	8.22	66.94	52,465

Design	Plan #1			
Audit Notes:				
Version:	Phase:	PLAN	Tie On Depth:	0.00
Vertical Section:	Depth From (TVD) (ft)	+N/-S (ft)	+E/-W (ft)	Direction (°)
	0.00	0.00	0.00	272.91

Plan Survey Tool Program	Date	4/24/2017		
Depth From (ft)	Depth To (ft)	Survey (Wellbore)	Tool Name	Remarks
1	0.00	19,025.91 Plan #1 (OH)	MWD+IFR1	
			OWSG MWD + IFR1	

Database:	EDM 5000.14 Single User Db	Local Co-ordinate Reference:	Well Falken 9C-9-L
Company:	Synergy Resources Corporation	TVD Reference:	GL 4810 & KB 20 @ 4830.00ft (Original Well Elev)
Project:	SEC 12-13 T6N R66W	MD Reference:	GL 4810 & KB 20 @ 4830.00ft (Original Well Elev)
Site:	Falken 9-11 PAD	North Reference:	True
Well:	Falken 9C-9-L	Survey Calculation Method:	Minimum Curvature
Wellbore:	OH		
Design:	Plan #1		

Plan Sections										
Measured Depth (ft)	Inclination (°)	Azimuth (°)	Vertical Depth (ft)	+N/-S (ft)	+E/-W (ft)	Dogleg Rate (°/100ft)	Build Rate (°/100ft)	Turn Rate (°/100ft)	TFO (°)	Target
0.00	0.00	0.00	0.00	0.00	0.00	0.00	0.00	0.00	0.00	
200.00	0.00	0.00	200.00	0.00	0.00	0.00	0.00	0.00	0.00	
849.22	12.98	90.71	843.68	-0.91	73.24	2.00	2.00	0.00	90.71	
5,582.90	12.98	90.71	5,456.32	-14.09	1,136.76	0.00	0.00	0.00	0.00	
6,232.12	0.00	0.00	6,100.00	-15.00	1,210.00	2.00	-2.00	0.00	180.00	
6,736.50	0.00	0.00	6,604.38	-15.00	1,210.00	0.00	0.00	0.00	0.00	
7,735.44	89.90	272.91	7,241.00	17.22	575.26	9.00	9.00	-8.72	272.91	
11,340.34	89.90	272.91	7,247.00	200.00	-3,025.00	0.00	0.00	0.00	0.00	
11,586.15	89.90	267.99	7,247.43	201.92	-3,270.72	2.00	0.00	-2.00	-90.11	
19,025.91	89.90	267.99	7,261.00	-59.00	-10,705.90	0.00	0.00	0.00	0.00	

Database:	EDM 5000.14 Single User Db	Local Co-ordinate Reference:	Well Falken 9C-9-L
Company:	Synergy Resources Corporation	TVD Reference:	GL 4810 & KB 20 @ 4830.00ft (Original Well Elev)
Project:	SEC 12-13 T6N R66W	MD Reference:	GL 4810 & KB 20 @ 4830.00ft (Original Well Elev)
Site:	Falken 9-11 PAD	North Reference:	True
Well:	Falken 9C-9-L	Survey Calculation Method:	Minimum Curvature
Wellbore:	OH		
Design:	Plan #1		

Planned Survey									
Measured Depth (ft)	Inclination (°)	Azimuth (°)	Vertical Depth (ft)	+N/-S (ft)	+E/-W (ft)	Vertical Section (ft)	Dogleg Rate (°/100ft)	Build Rate (°/100ft)	Turn Rate (°/100ft)
0.00	0.00	0.00	0.00	0.00	0.00	0.00	0.00	0.00	0.00
100.00	0.00	0.00	100.00	0.00	0.00	0.00	0.00	0.00	0.00
200.00	0.00	0.00	200.00	0.00	0.00	0.00	0.00	0.00	0.00
Start Build 2.00									
300.00	2.00	90.71	299.98	-0.02	1.75	-1.74	2.00	2.00	0.00
400.00	4.00	90.71	399.84	-0.09	6.98	-6.97	2.00	2.00	0.00
500.00	6.00	90.71	499.45	-0.19	15.69	-15.68	2.00	2.00	0.00
600.00	8.00	90.71	598.70	-0.35	27.88	-27.86	2.00	2.00	0.00
700.00	10.00	90.71	697.47	-0.54	43.52	-43.49	2.00	2.00	0.00
800.00	12.00	90.71	795.62	-0.78	62.60	-62.56	2.00	2.00	0.00
849.22	12.98	90.71	843.68	-0.91	73.24	-73.20	2.00	2.00	0.00
Start 4733.68 hold at 849.22 MD									
900.00	12.98	90.71	893.16	-1.05	84.65	-84.60	0.00	0.00	0.00
1,000.00	12.98	90.71	990.60	-1.33	107.12	-107.05	0.00	0.00	0.00
1,100.00	12.98	90.71	1,088.05	-1.61	129.59	-129.50	0.00	0.00	0.00
1,200.00	12.98	90.71	1,185.49	-1.88	152.05	-151.95	0.00	0.00	0.00
1,300.00	12.98	90.71	1,282.93	-2.16	174.52	-174.40	0.00	0.00	0.00
1,400.00	12.98	90.71	1,380.37	-2.44	196.99	-196.86	0.00	0.00	0.00
1,500.00	12.98	90.71	1,477.82	-2.72	219.45	-219.31	0.00	0.00	0.00
1,600.00	12.98	90.71	1,575.26	-3.00	241.92	-241.76	0.00	0.00	0.00
1,700.00	12.98	90.71	1,672.70	-3.28	264.39	-264.21	0.00	0.00	0.00
1,779.32	12.98	90.71	1,750.00	-3.50	282.21	-282.02	0.00	0.00	0.00
9 5/8"									
1,800.00	12.98	90.71	1,770.15	-3.56	286.85	-286.67	0.00	0.00	0.00
1,900.00	12.98	90.71	1,867.59	-3.83	309.32	-309.12	0.00	0.00	0.00
2,000.00	12.98	90.71	1,965.03	-4.11	331.79	-331.57	0.00	0.00	0.00
2,100.00	12.98	90.71	2,062.48	-4.39	354.26	-354.02	0.00	0.00	0.00
2,200.00	12.98	90.71	2,159.92	-4.67	376.72	-376.47	0.00	0.00	0.00
2,300.00	12.98	90.71	2,257.36	-4.95	399.19	-398.93	0.00	0.00	0.00
2,400.00	12.98	90.71	2,354.81	-5.23	421.66	-421.38	0.00	0.00	0.00
2,500.00	12.98	90.71	2,452.25	-5.51	444.12	-443.83	0.00	0.00	0.00
2,600.00	12.98	90.71	2,549.69	-5.78	466.59	-466.28	0.00	0.00	0.00
2,700.00	12.98	90.71	2,647.13	-6.06	489.06	-488.73	0.00	0.00	0.00
2,800.00	12.98	90.71	2,744.58	-6.34	511.52	-511.19	0.00	0.00	0.00
2,900.00	12.98	90.71	2,842.02	-6.62	533.99	-533.64	0.00	0.00	0.00
3,000.00	12.98	90.71	2,939.46	-6.90	556.46	-556.09	0.00	0.00	0.00
3,100.00	12.98	90.71	3,036.91	-7.18	578.92	-578.54	0.00	0.00	0.00
3,200.00	12.98	90.71	3,134.35	-7.46	601.39	-600.99	0.00	0.00	0.00
3,300.00	12.98	90.71	3,231.79	-7.73	623.86	-623.45	0.00	0.00	0.00
3,400.00	12.98	90.71	3,329.24	-8.01	646.33	-645.90	0.00	0.00	0.00
3,500.00	12.98	90.71	3,426.68	-8.29	668.79	-668.35	0.00	0.00	0.00
3,600.00	12.98	90.71	3,524.12	-8.57	691.26	-690.80	0.00	0.00	0.00
3,700.00	12.98	90.71	3,621.57	-8.85	713.73	-713.26	0.00	0.00	0.00
3,800.00	12.98	90.71	3,719.01	-9.13	736.19	-735.71	0.00	0.00	0.00
3,900.00	12.98	90.71	3,816.45	-9.40	758.66	-758.16	0.00	0.00	0.00
4,000.00	12.98	90.71	3,913.90	-9.68	781.13	-780.61	0.00	0.00	0.00
4,100.00	12.98	90.71	4,011.34	-9.96	803.59	-803.06	0.00	0.00	0.00
4,200.00	12.98	90.71	4,108.78	-10.24	826.06	-825.52	0.00	0.00	0.00
4,300.00	12.98	90.71	4,206.22	-10.52	848.53	-847.97	0.00	0.00	0.00
4,400.00	12.98	90.71	4,303.67	-10.80	871.00	-870.42	0.00	0.00	0.00
4,500.00	12.98	90.71	4,401.11	-11.08	893.46	-892.87	0.00	0.00	0.00
4,600.00	12.98	90.71	4,498.55	-11.35	915.93	-915.32	0.00	0.00	0.00

Database:	EDM 5000.14 Single User Db	Local Co-ordinate Reference:	Well Falken 9C-9-L
Company:	Synergy Resources Corporation	TVD Reference:	GL 4810 & KB 20 @ 4830.00ft (Original Well Elev)
Project:	SEC 12-13 T6N R66W	MD Reference:	GL 4810 & KB 20 @ 4830.00ft (Original Well Elev)
Site:	Falken 9-11 PAD	North Reference:	True
Well:	Falken 9C-9-L	Survey Calculation Method:	Minimum Curvature
Wellbore:	OH		
Design:	Plan #1		

Planned Survey									
Measured Depth (ft)	Inclination (°)	Azimuth (°)	Vertical Depth (ft)	+N/-S (ft)	+E/-W (ft)	Vertical Section (ft)	Dogleg Rate (°/100ft)	Build Rate (°/100ft)	Turn Rate (°/100ft)
4,700.00	12.98	90.71	4,596.00	-11.63	938.40	-937.78	0.00	0.00	0.00
4,800.00	12.98	90.71	4,693.44	-11.91	960.86	-960.23	0.00	0.00	0.00
4,900.00	12.98	90.71	4,790.88	-12.19	983.33	-982.68	0.00	0.00	0.00
5,000.00	12.98	90.71	4,888.33	-12.47	1,005.80	-1,005.13	0.00	0.00	0.00
5,100.00	12.98	90.71	4,985.77	-12.75	1,028.26	-1,027.58	0.00	0.00	0.00
5,200.00	12.98	90.71	5,083.21	-13.03	1,050.73	-1,050.04	0.00	0.00	0.00
5,300.00	12.98	90.71	5,180.66	-13.30	1,073.20	-1,072.49	0.00	0.00	0.00
5,400.00	12.98	90.71	5,278.10	-13.58	1,095.66	-1,094.94	0.00	0.00	0.00
5,500.00	12.98	90.71	5,375.54	-13.86	1,118.13	-1,117.39	0.00	0.00	0.00
5,582.90	12.98	90.71	5,456.32	-14.09	1,136.76	-1,136.01	0.00	0.00	0.00
Start Drop -2.00									
5,600.00	12.64	90.71	5,473.00	-14.14	1,140.55	-1,139.80	2.00	-2.00	0.00
5,700.00	10.64	90.71	5,570.93	-14.39	1,160.73	-1,159.96	2.00	-2.00	0.00
5,800.00	8.64	90.71	5,669.52	-14.60	1,177.47	-1,176.70	2.00	-2.00	0.00
5,900.00	6.64	90.71	5,768.62	-14.76	1,190.77	-1,189.99	2.00	-2.00	0.00
6,000.00	4.64	90.71	5,868.13	-14.88	1,200.60	-1,199.81	2.00	-2.00	0.00
6,100.00	2.64	90.71	5,967.93	-14.96	1,206.95	-1,206.16	2.00	-2.00	0.00
6,200.00	0.64	90.71	6,067.88	-15.00	1,209.82	-1,209.02	2.00	-2.00	0.00
6,232.12	0.00	0.00	6,100.00	-15.00	1,210.00	-1,209.20	2.00	-2.00	0.00
Start 504.38 hold at 6232.12 MD									
6,300.00	0.00	0.00	6,167.88	-15.00	1,210.00	-1,209.20	0.00	0.00	0.00
6,400.00	0.00	0.00	6,267.88	-15.00	1,210.00	-1,209.20	0.00	0.00	0.00
6,500.00	0.00	0.00	6,367.88	-15.00	1,210.00	-1,209.20	0.00	0.00	0.00
6,600.00	0.00	0.00	6,467.88	-15.00	1,210.00	-1,209.20	0.00	0.00	0.00
6,700.00	0.00	0.00	6,567.88	-15.00	1,210.00	-1,209.20	0.00	0.00	0.00
6,736.50	0.00	0.00	6,604.38	-15.00	1,210.00	-1,209.20	0.00	0.00	0.00
Start DLS 9.00 TFO 272.91									
6,800.00	5.71	272.91	6,667.77	-14.84	1,206.84	-1,206.04	9.00	9.00	0.00
6,900.00	14.71	272.91	6,766.09	-13.94	1,189.15	-1,188.32	9.00	9.00	0.00
7,000.00	23.71	272.91	6,860.42	-12.27	1,156.31	-1,155.44	9.00	9.00	0.00
7,100.00	32.71	272.91	6,948.45	-9.88	1,109.14	-1,108.21	9.00	9.00	0.00
7,200.00	41.71	272.91	7,028.00	-6.82	1,048.80	-1,047.80	9.00	9.00	0.00
7,300.00	50.71	272.91	7,097.13	-3.16	976.77	-975.68	9.00	9.00	0.00
7,400.00	59.71	272.91	7,154.12	1.00	894.84	-893.63	9.00	9.00	0.00
7,500.00	68.71	272.91	7,197.57	5.56	805.00	-803.68	9.00	9.00	0.00
7,600.00	77.71	272.91	7,226.42	10.41	709.48	-708.04	9.00	9.00	0.00
7,700.00	86.71	272.91	7,239.95	15.43	610.63	-609.06	9.00	9.00	0.00
7,733.35	89.72	272.91	7,240.99	17.12	577.34	-575.73	9.00	9.00	0.00
TOP_Falken 9C-9-L(1843' FSL & 300' FWL)									
7,735.44	89.90	272.91	7,241.00	17.22	575.26	-573.64	9.00	9.00	0.00
LP(1877 FSL 300 FWL)									
7,800.00	89.90	272.91	7,241.11	20.50	510.78	-509.08	0.00	0.00	0.00
7,900.00	89.90	272.91	7,241.27	25.57	410.91	-409.08	0.00	0.00	0.00
8,000.00	89.90	272.91	7,241.44	30.64	311.04	-309.08	0.00	0.00	0.00
8,100.00	89.90	272.91	7,241.61	35.71	211.17	-209.08	0.00	0.00	0.00
8,200.00	89.90	272.91	7,241.77	40.78	111.30	-109.08	0.00	0.00	0.00
8,300.00	89.90	272.91	7,241.94	45.85	11.43	-9.08	0.00	0.00	0.00
8,400.00	89.90	272.91	7,242.11	50.92	-88.45	90.92	0.00	0.00	0.00
8,500.00	89.90	272.91	7,242.27	55.99	-188.32	190.92	0.00	0.00	0.00
8,600.00	89.90	272.91	7,242.44	61.06	-288.19	290.92	0.00	0.00	0.00
8,700.00	89.90	272.91	7,242.60	66.13	-388.06	390.92	0.00	0.00	0.00

Database:	EDM 5000.14 Single User Db	Local Co-ordinate Reference:	Well Falken 9C-9-L
Company:	Synergy Resources Corporation	TVD Reference:	GL 4810 & KB 20 @ 4830.00ft (Original Well Elev)
Project:	SEC 12-13 T6N R66W	MD Reference:	GL 4810 & KB 20 @ 4830.00ft (Original Well Elev)
Site:	Falken 9-11 PAD	North Reference:	True
Well:	Falken 9C-9-L	Survey Calculation Method:	Minimum Curvature
Wellbore:	OH		
Design:	Plan #1		

Planned Survey									
Measured Depth (ft)	Inclination (°)	Azimuth (°)	Vertical Depth (ft)	+N/-S (ft)	+E/-W (ft)	Vertical Section (ft)	Dogleg Rate (°/100ft)	Build Rate (°/100ft)	Turn Rate (°/100ft)
8,800.00	89.90	272.91	7,242.77	71.20	-487.93	490.92	0.00	0.00	0.00
8,900.00	89.90	272.91	7,242.94	76.27	-587.80	590.92	0.00	0.00	0.00
9,000.00	89.90	272.91	7,243.10	81.34	-687.67	690.92	0.00	0.00	0.00
9,100.00	89.90	272.91	7,243.27	86.41	-787.54	790.92	0.00	0.00	0.00
9,200.00	89.90	272.91	7,243.44	91.48	-887.42	890.92	0.00	0.00	0.00
9,300.00	89.90	272.91	7,243.60	96.55	-987.29	990.92	0.00	0.00	0.00
9,400.00	89.90	272.91	7,243.77	101.62	-1,087.16	1,090.92	0.00	0.00	0.00
9,500.00	89.90	272.91	7,243.94	106.69	-1,187.03	1,190.92	0.00	0.00	0.00
9,600.00	89.90	272.91	7,244.10	111.76	-1,286.90	1,290.92	0.00	0.00	0.00
9,700.00	89.90	272.91	7,244.27	116.83	-1,386.77	1,390.92	0.00	0.00	0.00
9,800.00	89.90	272.91	7,244.44	121.90	-1,486.64	1,490.92	0.00	0.00	0.00
9,900.00	89.90	272.91	7,244.60	126.97	-1,586.51	1,590.91	0.00	0.00	0.00
10,000.00	89.90	272.91	7,244.77	132.04	-1,686.39	1,690.91	0.00	0.00	0.00
10,100.00	89.90	272.91	7,244.94	137.11	-1,786.26	1,790.91	0.00	0.00	0.00
10,200.00	89.90	272.91	7,245.10	142.18	-1,886.13	1,890.91	0.00	0.00	0.00
10,300.00	89.90	272.91	7,245.27	147.25	-1,986.00	1,990.91	0.00	0.00	0.00
10,400.00	89.90	272.91	7,245.43	152.32	-2,085.87	2,090.91	0.00	0.00	0.00
10,500.00	89.90	272.91	7,245.60	157.39	-2,185.74	2,190.91	0.00	0.00	0.00
10,600.00	89.90	272.91	7,245.77	162.46	-2,285.61	2,290.91	0.00	0.00	0.00
10,700.00	89.90	272.91	7,245.93	167.53	-2,385.48	2,390.91	0.00	0.00	0.00
10,800.00	89.90	272.91	7,246.10	172.60	-2,485.36	2,490.91	0.00	0.00	0.00
10,900.00	89.90	272.91	7,246.27	177.67	-2,585.23	2,590.91	0.00	0.00	0.00
11,000.00	89.90	272.91	7,246.43	182.74	-2,685.10	2,690.91	0.00	0.00	0.00
11,100.00	89.90	272.91	7,246.60	187.81	-2,784.97	2,790.91	0.00	0.00	0.00
11,200.00	89.90	272.91	7,246.77	192.88	-2,884.84	2,890.91	0.00	0.00	0.00
11,300.00	89.90	272.91	7,246.93	197.95	-2,984.71	2,990.91	0.00	0.00	0.00
11,340.34	89.90	272.91	7,247.00	200.00	-3,025.00	3,031.25	0.00	0.00	0.00
Start DLS 2.00 TFO -90.11									
11,400.00	89.90	271.71	7,247.10	202.40	-3,084.61	3,090.91	2.00	0.00	-2.00
11,500.00	89.90	269.71	7,247.27	203.65	-3,184.60	3,190.83	2.00	0.00	-2.00
11,586.15	89.90	267.99	7,247.43	201.92	-3,270.72	3,276.76	2.00	0.00	-2.00
Start 7439.77 hold at 11586.15 MD									
11,600.00	89.90	267.99	7,247.45	201.44	-3,284.57	3,290.56	0.00	0.00	0.00
11,700.00	89.90	267.99	7,247.64	197.93	-3,384.51	3,390.19	0.00	0.00	0.00
11,800.00	89.90	267.99	7,247.82	194.42	-3,484.44	3,489.82	0.00	0.00	0.00
11,900.00	89.90	267.99	7,248.00	190.91	-3,584.38	3,589.45	0.00	0.00	0.00
12,000.00	89.90	267.99	7,248.18	187.41	-3,684.32	3,689.08	0.00	0.00	0.00
12,100.00	89.90	267.99	7,248.37	183.90	-3,784.26	3,788.72	0.00	0.00	0.00
12,200.00	89.90	267.99	7,248.55	180.39	-3,884.20	3,888.35	0.00	0.00	0.00
12,300.00	89.90	267.99	7,248.73	176.89	-3,984.14	3,987.98	0.00	0.00	0.00
12,400.00	89.90	267.99	7,248.91	173.38	-4,084.07	4,087.61	0.00	0.00	0.00
12,500.00	89.90	267.99	7,249.10	169.87	-4,184.01	4,187.24	0.00	0.00	0.00
12,600.00	89.90	267.99	7,249.28	166.37	-4,283.95	4,286.87	0.00	0.00	0.00
12,700.00	89.90	267.99	7,249.46	162.86	-4,383.89	4,386.50	0.00	0.00	0.00
12,800.00	89.90	267.99	7,249.64	159.35	-4,483.83	4,486.14	0.00	0.00	0.00
12,900.00	89.90	267.99	7,249.83	155.84	-4,583.77	4,585.77	0.00	0.00	0.00
13,000.00	89.90	267.99	7,250.01	152.34	-4,683.70	4,685.40	0.00	0.00	0.00
13,100.00	89.90	267.99	7,250.19	148.83	-4,783.64	4,785.03	0.00	0.00	0.00
13,200.00	89.90	267.99	7,250.37	145.32	-4,883.58	4,884.66	0.00	0.00	0.00
13,300.00	89.90	267.99	7,250.56	141.82	-4,983.52	4,984.29	0.00	0.00	0.00
13,400.00	89.90	267.99	7,250.74	138.31	-5,083.46	5,083.92	0.00	0.00	0.00
13,500.00	89.90	267.99	7,250.92	134.80	-5,183.40	5,183.56	0.00	0.00	0.00

Database:	EDM 5000.14 Single User Db	Local Co-ordinate Reference:	Well Falken 9C-9-L
Company:	Synergy Resources Corporation	TVD Reference:	GL 4810 & KB 20 @ 4830.00ft (Original Well Elev)
Project:	SEC 12-13 T6N R66W	MD Reference:	GL 4810 & KB 20 @ 4830.00ft (Original Well Elev)
Site:	Falken 9-11 PAD	North Reference:	True
Well:	Falken 9C-9-L	Survey Calculation Method:	Minimum Curvature
Wellbore:	OH		
Design:	Plan #1		

Planned Survey									
Measured Depth (ft)	Inclination (°)	Azimuth (°)	Vertical Depth (ft)	+N/-S (ft)	+E/-W (ft)	Vertical Section (ft)	Dogleg Rate (°/100ft)	Build Rate (°/100ft)	Turn Rate (°/100ft)
13,600.00	89.90	267.99	7,251.10	131.29	-5,283.33	5,283.19	0.00	0.00	0.00
13,700.00	89.90	267.99	7,251.29	127.79	-5,383.27	5,382.82	0.00	0.00	0.00
13,800.00	89.90	267.99	7,251.47	124.28	-5,483.21	5,482.45	0.00	0.00	0.00
13,900.00	89.90	267.99	7,251.65	120.77	-5,583.15	5,582.08	0.00	0.00	0.00
14,000.00	89.90	267.99	7,251.83	117.27	-5,683.09	5,681.71	0.00	0.00	0.00
14,100.00	89.90	267.99	7,252.01	113.76	-5,783.03	5,781.34	0.00	0.00	0.00
14,200.00	89.90	267.99	7,252.20	110.25	-5,882.96	5,880.98	0.00	0.00	0.00
14,300.00	89.90	267.99	7,252.38	106.74	-5,982.90	5,980.61	0.00	0.00	0.00
14,400.00	89.90	267.99	7,252.56	103.24	-6,082.84	6,080.24	0.00	0.00	0.00
14,500.00	89.90	267.99	7,252.74	99.73	-6,182.78	6,179.87	0.00	0.00	0.00
14,600.00	89.90	267.99	7,252.93	96.22	-6,282.72	6,279.50	0.00	0.00	0.00
14,700.00	89.90	267.99	7,253.11	92.72	-6,382.66	6,379.13	0.00	0.00	0.00
14,800.00	89.90	267.99	7,253.29	89.21	-6,482.59	6,478.76	0.00	0.00	0.00
14,900.00	89.90	267.99	7,253.47	85.70	-6,582.53	6,578.40	0.00	0.00	0.00
15,000.00	89.90	267.99	7,253.66	82.19	-6,682.47	6,678.03	0.00	0.00	0.00
15,100.00	89.90	267.99	7,253.84	78.69	-6,782.41	6,777.66	0.00	0.00	0.00
15,200.00	89.90	267.99	7,254.02	75.18	-6,882.35	6,877.29	0.00	0.00	0.00
15,300.00	89.90	267.99	7,254.20	71.67	-6,982.29	6,976.92	0.00	0.00	0.00
15,400.00	89.90	267.99	7,254.39	68.17	-7,082.22	7,076.55	0.00	0.00	0.00
15,500.00	89.90	267.99	7,254.57	64.66	-7,182.16	7,176.18	0.00	0.00	0.00
15,600.00	89.90	267.99	7,254.75	61.15	-7,282.10	7,275.82	0.00	0.00	0.00
15,700.00	89.90	267.99	7,254.93	57.64	-7,382.04	7,375.45	0.00	0.00	0.00
15,800.00	89.90	267.99	7,255.12	54.14	-7,481.98	7,475.08	0.00	0.00	0.00
15,900.00	89.90	267.99	7,255.30	50.63	-7,581.92	7,574.71	0.00	0.00	0.00
16,000.00	89.90	267.99	7,255.48	47.12	-7,681.85	7,674.34	0.00	0.00	0.00
16,100.00	89.90	267.99	7,255.66	43.62	-7,781.79	7,773.97	0.00	0.00	0.00
16,200.00	89.90	267.99	7,255.85	40.11	-7,881.73	7,873.60	0.00	0.00	0.00
16,300.00	89.90	267.99	7,256.03	36.60	-7,981.67	7,973.24	0.00	0.00	0.00
16,400.00	89.90	267.99	7,256.21	33.09	-8,081.61	8,072.87	0.00	0.00	0.00
16,500.00	89.90	267.99	7,256.39	29.59	-8,181.55	8,172.50	0.00	0.00	0.00
16,600.00	89.90	267.99	7,256.58	26.08	-8,281.48	8,272.13	0.00	0.00	0.00
16,700.00	89.90	267.99	7,256.76	22.57	-8,381.42	8,371.76	0.00	0.00	0.00
16,800.00	89.90	267.99	7,256.94	19.07	-8,481.36	8,471.39	0.00	0.00	0.00
16,900.00	89.90	267.99	7,257.12	15.56	-8,581.30	8,571.02	0.00	0.00	0.00
17,000.00	89.90	267.99	7,257.30	12.05	-8,681.24	8,670.65	0.00	0.00	0.00
17,100.00	89.90	267.99	7,257.49	8.54	-8,781.18	8,770.29	0.00	0.00	0.00
17,200.00	89.90	267.99	7,257.67	5.04	-8,881.11	8,869.92	0.00	0.00	0.00
17,300.00	89.90	267.99	7,257.85	1.53	-8,981.05	8,969.55	0.00	0.00	0.00
17,400.00	89.90	267.99	7,258.03	-1.98	-9,080.99	9,069.18	0.00	0.00	0.00
17,500.00	89.90	267.99	7,258.22	-5.48	-9,180.93	9,168.81	0.00	0.00	0.00
17,600.00	89.90	267.99	7,258.40	-8.99	-9,280.87	9,268.44	0.00	0.00	0.00
17,700.00	89.90	267.99	7,258.58	-12.50	-9,380.81	9,368.07	0.00	0.00	0.00
17,800.00	89.90	267.99	7,258.76	-16.01	-9,480.74	9,467.71	0.00	0.00	0.00
17,900.00	89.90	267.99	7,258.95	-19.51	-9,580.68	9,567.34	0.00	0.00	0.00
18,000.00	89.90	267.99	7,259.13	-23.02	-9,680.62	9,666.97	0.00	0.00	0.00
18,100.00	89.90	267.99	7,259.31	-26.53	-9,780.56	9,766.60	0.00	0.00	0.00
18,200.00	89.90	267.99	7,259.49	-30.03	-9,880.50	9,866.23	0.00	0.00	0.00
18,300.00	89.90	267.99	7,259.68	-33.54	-9,980.44	9,965.86	0.00	0.00	0.00
18,400.00	89.90	267.99	7,259.86	-37.05	-10,080.37	10,065.49	0.00	0.00	0.00
18,500.00	89.90	267.99	7,260.04	-40.56	-10,180.31	10,165.13	0.00	0.00	0.00
18,600.00	89.90	267.99	7,260.22	-44.06	-10,280.25	10,264.76	0.00	0.00	0.00
18,700.00	89.90	267.99	7,260.41	-47.57	-10,380.19	10,364.39	0.00	0.00	0.00

Database:	EDM 5000.14 Single User Db	Local Co-ordinate Reference:	Well Falken 9C-9-L
Company:	Synergy Resources Corporation	TVD Reference:	GL 4810 & KB 20 @ 4830.00ft (Original Well Elev)
Project:	SEC 12-13 T6N R66W	MD Reference:	GL 4810 & KB 20 @ 4830.00ft (Original Well Elev)
Site:	Falken 9-11 PAD	North Reference:	True
Well:	Falken 9C-9-L	Survey Calculation Method:	Minimum Curvature
Wellbore:	OH		
Design:	Plan #1		

Planned Survey									
Measured Depth (ft)	Inclination (°)	Azimuth (°)	Vertical Depth (ft)	+N/-S (ft)	+E/-W (ft)	Vertical Section (ft)	Dogleg Rate (°/100ft)	Build Rate (°/100ft)	Turn Rate (°/100ft)
18,800.00	89.90	267.99	7,260.59	-51.08	-10,480.13	10,464.02	0.00	0.00	0.00
18,900.00	89.90	267.99	7,260.77	-54.58	-10,580.07	10,563.65	0.00	0.00	0.00
19,000.00	89.90	267.99	7,260.95	-58.09	-10,680.00	10,663.28	0.00	0.00	0.00
19,022.80	89.90	267.99	7,260.99	-58.89	-10,702.79	10,686.00	0.00	0.00	0.00
PBHL Falken 9C-9-L(1868' FSL & 300' FEL)									
19,025.91	89.90	267.99	7,261.00	-59.00	-10,705.90	10,689.10	0.00	0.00	0.00
TD(1776 FSL 300 FEL)									

Design Targets									
Target Name	Dip Angle (°)	Dip Dir. (°)	TVD (ft)	+N/-S (ft)	+E/-W (ft)	Northing (ft)	Easting (ft)	Latitude	Longitude
- hit/miss target									
- Shape									
TOP_Falken 9C-9-L(184	0.00	0.00	7,241.00	-16.02	575.66	1,426,143.23	3,213,060.52	40.5006300	-104.7338760
- plan misses target center by 33.18ft at 7733.35ft MD (7240.99 TVD, 17.12 N, 577.34 E)									
- Point									
PBHL Falken 9C-9-L(18	0.00	0.00	7,261.00	29.65	-10,705.90	1,426,091.69	3,201,778.98	40.5007490	-104.7744430
- plan misses target center by 88.60ft at 19022.80ft MD (7260.99 TVD, -58.89 N, -10702.79 E)									
- Point									

Casing Points					
Measured Depth (ft)	Vertical Depth (ft)	Name	Casing Diameter (in)	Hole Diameter (in)	
1,779.32	1,750.00	9 5/8"	9.625	13.500	

Plan Annotations				
Measured Depth (ft)	Vertical Depth (ft)	+N/-S (ft)	+E/-W (ft)	Comment
200.00	200.00	0.00	0.00	Start Build 2.00
849.22	843.68	-0.91	73.24	Start 4733.68 hold at 849.22 MD
5,582.90	5,456.32	-14.09	1,136.76	Start Drop -2.00
6,232.12	6,100.00	-15.00	1,210.00	Start 504.38 hold at 6232.12 MD
6,736.50	6,604.38	-15.00	1,210.00	Start DLS 9.00 TFO 272.91
7,735.44	7,241.00	17.22	575.26	LP(1877 FSL 300 FWL)
11,340.34	7,247.00	200.00	-3,025.00	Start DLS 2.00 TFO -90.11
11,586.15	7,247.43	201.92	-3,270.72	Start 7439.77 hold at 11586.15 MD
19,025.91	7,261.00	-59.00	-10,705.90	TD(1776 FSL 300 FEL)