



Project: SEC 12-13 T6N R66W  
Site: Falken 9-11 PAD  
Well: Falken 32C-9-L  
Wellbore: OH  
Design: Plan #1

MD	Inc	Azi	TVD	+N/-S	+E/-W	Dleg	TFace	VSect	Target
0.00	0.00	0.00	0.00	0.00	0.00	0.00	0.00	0.00	
200.00	0.00	0.00	200.00	0.00	0.00	0.00	0.00	0.00	
824.00	12.48	65.56	819.08	28.01	61.63	2.00	65.56	-61.61	
6628.42	12.48	65.56	6486.35	546.97	1203.56	0.00	0.00	-1203.18	
7753.32	89.90	270.04	7245.00	616.92	580.55	9.00	-155.00	-580.12	
19044.52	89.90	270.04	7265.00	625.67	-10710.63	0.00	0.00	10711.06	PBHL_TOP_Falken 32C-9-L

PROJECT DETAILS: SEC 12-13 T6N R66W  
Geodetic System: US State Plane 1983  
Datum: North American Datum 1983  
Ellipsoid: GRS 1980  
Zone: Colorado Northern Zone  
Colorado Northern Zone  
System Datum: Mean Sea Level

#### DESIGN TARGET DETAILS

Name	TVD	+N/-S	+E/-W	Northing	Easting	Latitude	Longitude	Shape
TOP_Falken 32C-9-L	7245.00	595.30	580.37	1426799.36	3213059.85	40.5024310	-104.7338580	Point
- plan misses target center by 21.62ft at 7753.48ft MD (7245.00 TVD, 616.92 N, 580.39 E)								
PBHL_TOP_Falken 32C-9-L	7265.00	625.67	-10710.63	1426732.45	3201769.01	40.5025080	-104.7744600	Point
- plan hits target center								

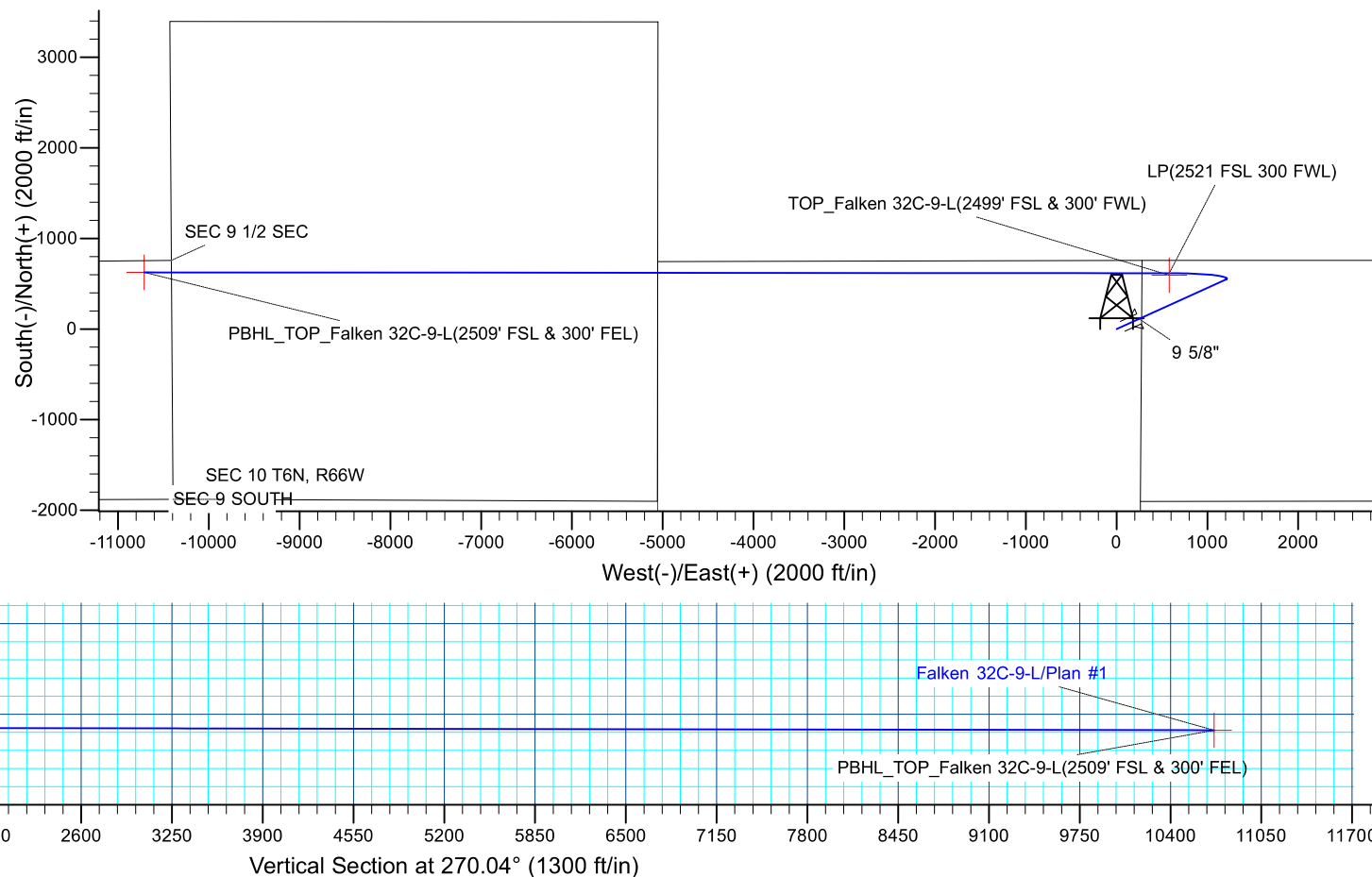
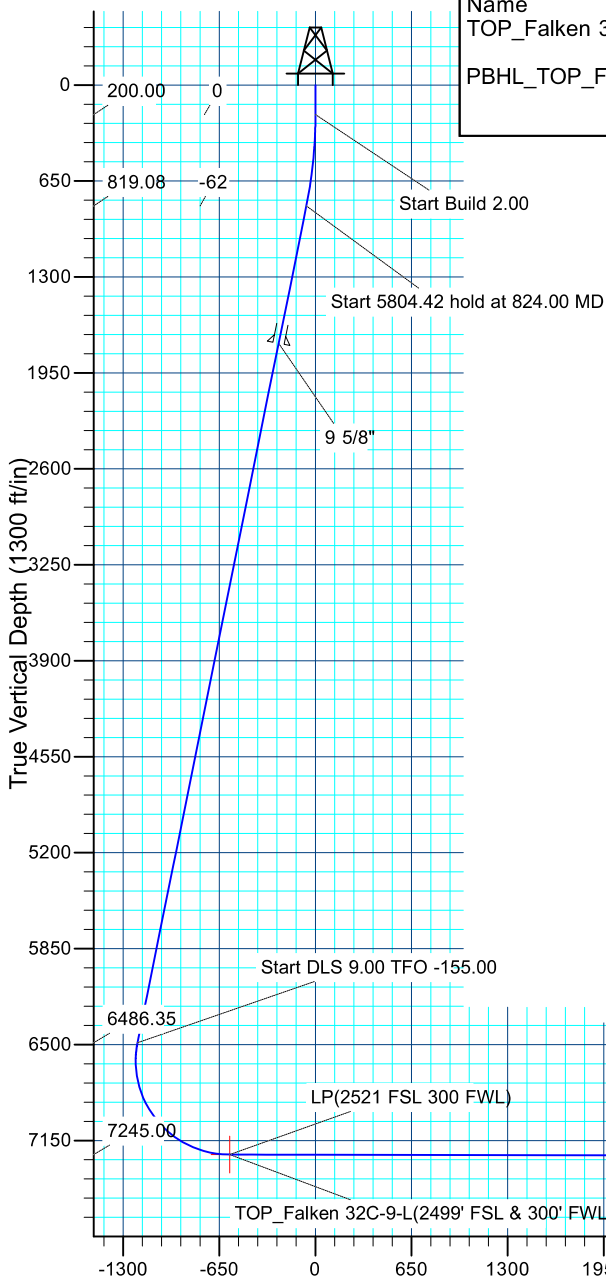
#### CASING DETAILS

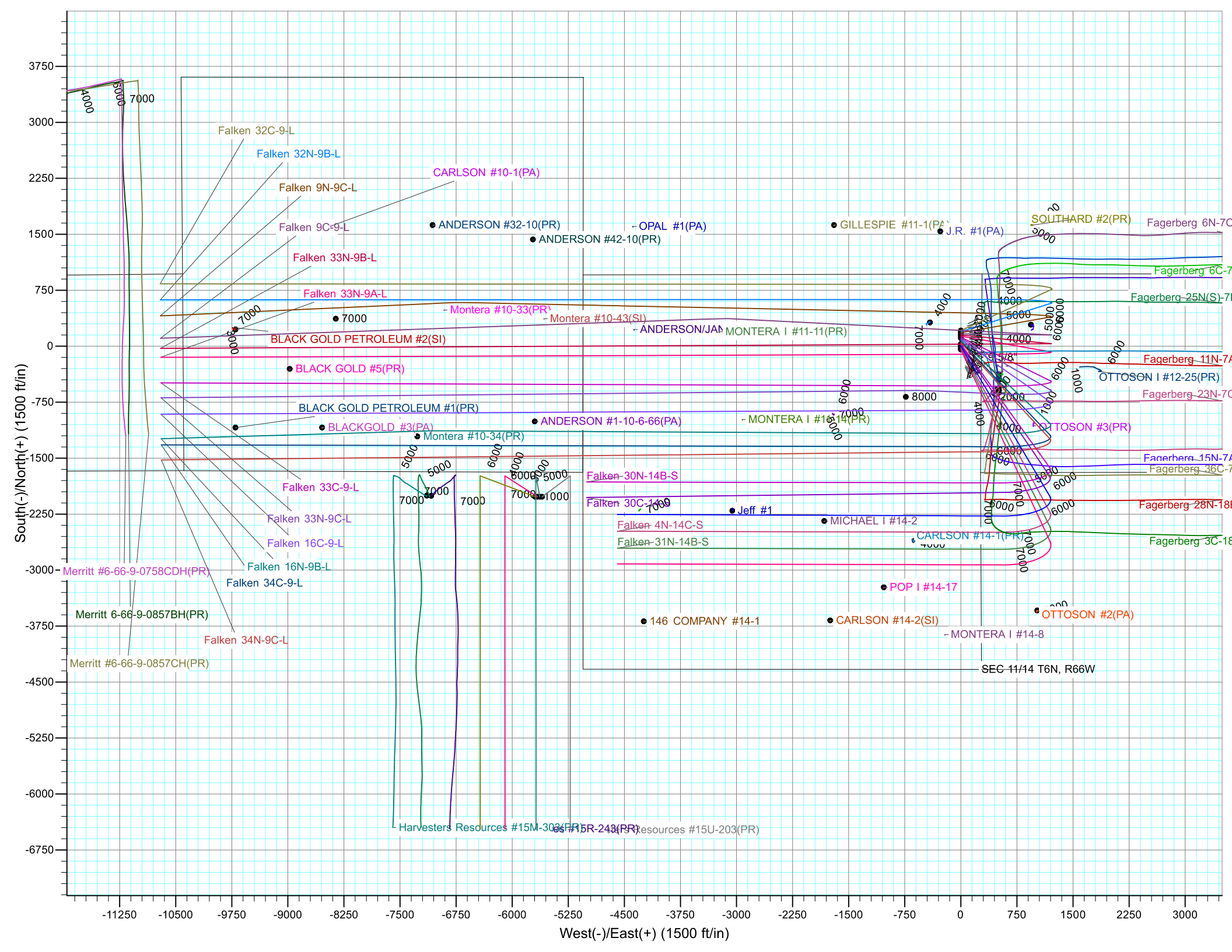
TVD	MD	Name	Size
1750.00	1777.45	9 5/8"	9.625

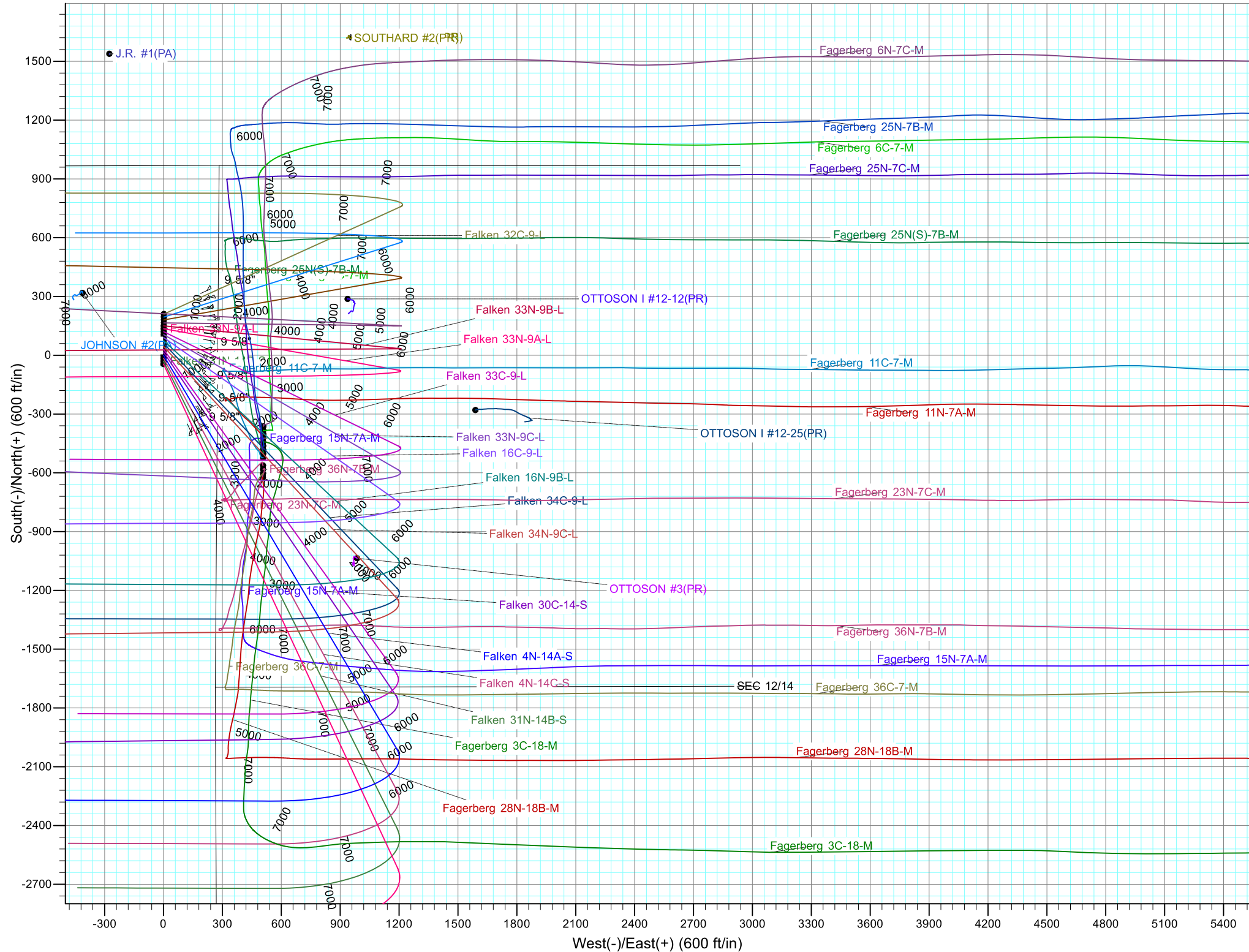


Azimuths to True North  
Magnetic North: 8.22°

Magnetic Field  
Strength: 52465.5snT  
Dip Angle: 66.94°  
Date: 4/21/2017  
Model: IGRF2015









# **Synergy Resources Corporation**

**SEC 12-13 T6N R66W**

**Falken 9-11 PAD**

**Falken 32C-9-L**

**OH**

**Plan: Plan #1**

## **Standard Planning Report**

**25 April, 2017**



<b>Database:</b>	EDM 5000.14 Single User Db	<b>Local Co-ordinate Reference:</b>	Well Falken 32C-9-L
<b>Company:</b>	Synergy Resources Corporation	<b>TVD Reference:</b>	GL 4810 & KB 20 @ 4830.00ft ( ASSUMED)
<b>Project:</b>	SEC 12-13 T6N R66W	<b>MD Reference:</b>	GL 4810 & KB 20 @ 4830.00ft ( ASSUMED)
<b>Site:</b>	Falken 9-11 PAD	<b>North Reference:</b>	True
<b>Well:</b>	Falken 32C-9-L	<b>Survey Calculation Method:</b>	Minimum Curvature
<b>Wellbore:</b>	OH		
<b>Design:</b>	Plan #1		

<b>Project</b>	SEC 12-13 T6N R66W		
<b>Map System:</b>	US State Plane 1983	<b>System Datum:</b>	Mean Sea Level
<b>Geo Datum:</b>	North American Datum 1983		
<b>Map Zone:</b>	Colorado Northern Zone		

Site		Falken 9-11 PAD			
Site Position:		Northing:	1,426,199.10 ft	Latitude:	40.5007970
From:	Lat/Long	Easting:	3,212,484.63 ft	Longitude:	-104.7359450
Position Uncertainty:	3.28 ft	Slot Radius:	13.200 in	Grid Convergence:	0.49

Well	Falken 32C-9-L, 1904' FSL & 276' FEL					
Well Position	+N/-S	-0.01 ft	Northing:	1,426,199.09 ft	Latitude:	40.5007970
	+E/-W	0.00 ft	Easting:	3,212,484.63 ft	Longitude:	-104.7359450
Position Uncertainty		3.28 ft	Wellhead Elevation:		Ground Level:	4,810.00 ft

<b>Wellbore</b>	OH				
<b>Magnetics</b>	<b>Model Name</b>	<b>Sample Date</b>	<b>Declination (°)</b>	<b>Dip Angle (°)</b>	<b>Field Strength (nT)</b>
	IGRF2015	4/21/2017	8.22	66.94	52,466

<b>Design</b>	Plan #1			
<b>Audit Notes:</b>				
<b>Version:</b>	<b>Phase:</b>	PLAN	<b>Tie On Depth:</b>	0.00
<b>Vertical Section:</b>	<b>Depth From (TVD) (ft)</b>	<b>+N/-S (ft)</b>	<b>+E/-W (ft)</b>	<b>Direction (°)</b>
	0.00	0.00	0.00	270.04

<b>Plan Survey Tool Program</b>	<b>Date</b>	4/24/2017		
<b>Depth From (ft)</b>	<b>Depth To (ft)</b>	<b>Survey (Wellbore)</b>	<b>Tool Name</b>	<b>Remarks</b>
1	0.00	19,044.09 Plan #1 (OH)	MWD+IFR1	
			OWSG MWD + IFR1	

<b>Plan Sections</b>										
<b>Measured Depth (ft)</b>	<b>Inclination (°)</b>	<b>Azimuth (°)</b>	<b>Vertical Depth (ft)</b>	<b>+N/-S (ft)</b>	<b>+E/-W (ft)</b>	<b>Dogleg Rate (°/100ft)</b>	<b>Build Rate (°/100ft)</b>	<b>Turn Rate (°/100ft)</b>	<b>TFO (°)</b>	<b>Target</b>
0.00	0.00	0.00	0.00	0.00	0.00	0.00	0.00	0.00	0.00	
200.00	0.00	0.00	200.00	0.00	0.00	0.00	0.00	0.00	0.00	
824.00	12.48	65.56	819.08	28.01	61.63	2.00	2.00	0.00	65.56	
6,628.42	12.48	65.56	6,486.35	546.97	1,203.56	0.00	0.00	0.00	0.00	
7,753.32	89.90	270.04	7,245.00	616.92	580.55	9.00	6.88	-13.82	-155.00	
19,044.52	89.90	270.04	7,265.00	625.67	-10,710.63	0.00	0.00	0.00	0.00	PBHL_TOP_Falken 3

<b>Database:</b>	EDM 5000.14 Single User Db	<b>Local Co-ordinate Reference:</b>	Well Falken 32C-9-L
<b>Company:</b>	Synergy Resources Corporation	<b>TVD Reference:</b>	GL 4810 & KB 20 @ 4830.00ft ( ASSUMED)
<b>Project:</b>	SEC 12-13 T6N R66W	<b>MD Reference:</b>	GL 4810 & KB 20 @ 4830.00ft ( ASSUMED)
<b>Site:</b>	Falken 9-11 PAD	<b>North Reference:</b>	True
<b>Well:</b>	Falken 32C-9-L	<b>Survey Calculation Method:</b>	Minimum Curvature
<b>Wellbore:</b>	OH		
<b>Design:</b>	Plan #1		

Planned Survey									
Measured Depth (ft)	Inclination (°)	Azimuth (°)	Vertical Depth (ft)	+N/-S (ft)	+E/-W (ft)	Vertical Section (ft)	Dogleg Rate (°/100ft)	Build Rate (°/100ft)	Turn Rate (°/100ft)
0.00	0.00	0.00	0.00	0.00	0.00	0.00	0.00	0.00	0.00
100.00	0.00	0.00	100.00	0.00	0.00	0.00	0.00	0.00	0.00
200.00	0.00	0.00	200.00	0.00	0.00	0.00	0.00	0.00	0.00
<b>Start Build 2.00</b>									
300.00	2.00	65.56	299.98	0.72	1.59	-1.59	2.00	2.00	0.00
400.00	4.00	65.56	399.84	2.89	6.35	-6.35	2.00	2.00	0.00
500.00	6.00	65.56	499.45	6.49	14.29	-14.28	2.00	2.00	0.00
600.00	8.00	65.56	598.70	11.54	25.38	-25.37	2.00	2.00	0.00
700.00	10.00	65.56	697.47	18.01	39.62	-39.61	2.00	2.00	0.00
800.00	12.00	65.56	795.62	25.90	56.99	-56.97	2.00	2.00	0.00
824.00	12.48	65.56	819.08	28.01	61.63	-61.61	2.00	2.00	0.00
<b>Start 5804.42 hold at 824.00 MD</b>									
900.00	12.48	65.56	893.28	34.80	76.58	-76.55	0.00	0.00	0.00
1,000.00	12.48	65.56	990.92	43.74	96.25	-96.22	0.00	0.00	0.00
1,100.00	12.48	65.56	1,088.56	52.68	115.92	-115.89	0.00	0.00	0.00
1,200.00	12.48	65.56	1,186.19	61.62	135.60	-135.55	0.00	0.00	0.00
1,300.00	12.48	65.56	1,283.83	70.56	155.27	-155.22	0.00	0.00	0.00
1,400.00	12.48	65.56	1,381.47	79.51	174.94	-174.89	0.00	0.00	0.00
1,500.00	12.48	65.56	1,479.10	88.45	194.62	-194.56	0.00	0.00	0.00
1,600.00	12.48	65.56	1,576.74	97.39	214.29	-214.22	0.00	0.00	0.00
1,700.00	12.48	65.56	1,674.38	106.33	233.97	-233.89	0.00	0.00	0.00
1,777.45	12.48	65.56	1,750.00	113.25	249.20	-249.12	0.00	0.00	0.00
<b>9 5/8"</b>									
1,800.00	12.48	65.56	1,772.02	115.27	253.64	-253.56	0.00	0.00	0.00
1,900.00	12.48	65.56	1,869.65	124.21	273.31	-273.23	0.00	0.00	0.00
2,000.00	12.48	65.56	1,967.29	133.15	292.99	-292.89	0.00	0.00	0.00
2,100.00	12.48	65.56	2,064.93	142.09	312.66	-312.56	0.00	0.00	0.00
2,200.00	12.48	65.56	2,162.56	151.03	332.33	-332.23	0.00	0.00	0.00
2,300.00	12.48	65.56	2,260.20	159.97	352.01	-351.89	0.00	0.00	0.00
2,400.00	12.48	65.56	2,357.84	168.91	371.68	-371.56	0.00	0.00	0.00
2,500.00	12.48	65.56	2,455.48	177.86	391.35	-391.23	0.00	0.00	0.00
2,600.00	12.48	65.56	2,553.11	186.80	411.03	-410.90	0.00	0.00	0.00
2,700.00	12.48	65.56	2,650.75	195.74	430.70	-430.56	0.00	0.00	0.00
2,800.00	12.48	65.56	2,748.39	204.68	450.37	-450.23	0.00	0.00	0.00
2,900.00	12.48	65.56	2,846.02	213.62	470.05	-469.90	0.00	0.00	0.00
3,000.00	12.48	65.56	2,943.66	222.56	489.72	-489.57	0.00	0.00	0.00
3,100.00	12.48	65.56	3,041.30	231.50	509.39	-509.23	0.00	0.00	0.00
3,200.00	12.48	65.56	3,138.94	240.44	529.07	-528.90	0.00	0.00	0.00
3,300.00	12.48	65.56	3,236.57	249.38	548.74	-548.57	0.00	0.00	0.00
3,400.00	12.48	65.56	3,334.21	258.32	568.42	-568.23	0.00	0.00	0.00
3,500.00	12.48	65.56	3,431.85	267.26	588.09	-587.90	0.00	0.00	0.00
3,600.00	12.48	65.56	3,529.48	276.21	607.76	-607.57	0.00	0.00	0.00
3,700.00	12.48	65.56	3,627.12	285.15	627.44	-627.24	0.00	0.00	0.00
3,800.00	12.48	65.56	3,724.76	294.09	647.11	-646.90	0.00	0.00	0.00
3,900.00	12.48	65.56	3,822.40	303.03	666.78	-666.57	0.00	0.00	0.00
4,000.00	12.48	65.56	3,920.03	311.97	686.46	-686.24	0.00	0.00	0.00
4,100.00	12.48	65.56	4,017.67	320.91	706.13	-705.91	0.00	0.00	0.00
4,200.00	12.48	65.56	4,115.31	329.85	725.80	-725.57	0.00	0.00	0.00
4,300.00	12.48	65.56	4,212.94	338.79	745.48	-745.24	0.00	0.00	0.00
4,400.00	12.48	65.56	4,310.58	347.73	765.15	-764.91	0.00	0.00	0.00
4,500.00	12.48	65.56	4,408.22	356.67	784.82	-784.57	0.00	0.00	0.00
4,600.00	12.48	65.56	4,505.86	365.61	804.50	-804.24	0.00	0.00	0.00
4,700.00	12.48	65.56	4,603.49	374.55	824.17	-823.91	0.00	0.00	0.00

<b>Database:</b>	EDM 5000.14 Single User Db	<b>Local Co-ordinate Reference:</b>	Well Falken 32C-9-L
<b>Company:</b>	Synergy Resources Corporation	<b>TVD Reference:</b>	GL 4810 & KB 20 @ 4830.00ft ( ASSUMED)
<b>Project:</b>	SEC 12-13 T6N R66W	<b>MD Reference:</b>	GL 4810 & KB 20 @ 4830.00ft ( ASSUMED)
<b>Site:</b>	Falken 9-11 PAD	<b>North Reference:</b>	True
<b>Well:</b>	Falken 32C-9-L	<b>Survey Calculation Method:</b>	Minimum Curvature
<b>Wellbore:</b>	OH		
<b>Design:</b>	Plan #1		

Planned Survey									
Measured Depth (ft)	Inclination (°)	Azimuth (°)	Vertical Depth (ft)	+N/-S (ft)	+E/-W (ft)	Vertical Section (ft)	Dogleg Rate (°/100ft)	Build Rate (°/100ft)	Turn Rate (°/100ft)
4,800.00	12.48	65.56	4,701.13	383.50	843.84	-843.58	0.00	0.00	0.00
4,900.00	12.48	65.56	4,798.77	392.44	863.52	-863.24	0.00	0.00	0.00
5,000.00	12.48	65.56	4,896.40	401.38	883.19	-882.91	0.00	0.00	0.00
5,100.00	12.48	65.56	4,994.04	410.32	902.87	-902.58	0.00	0.00	0.00
5,200.00	12.48	65.56	5,091.68	419.26	922.54	-922.25	0.00	0.00	0.00
5,300.00	12.48	65.56	5,189.32	428.20	942.21	-941.91	0.00	0.00	0.00
5,400.00	12.48	65.56	5,286.95	437.14	961.89	-961.58	0.00	0.00	0.00
5,500.00	12.48	65.56	5,384.59	446.08	981.56	-981.25	0.00	0.00	0.00
5,600.00	12.48	65.56	5,482.23	455.02	1,001.23	-1,000.92	0.00	0.00	0.00
5,700.00	12.48	65.56	5,579.87	463.96	1,020.91	-1,020.58	0.00	0.00	0.00
5,800.00	12.48	65.56	5,677.50	472.90	1,040.58	-1,040.25	0.00	0.00	0.00
5,900.00	12.48	65.56	5,775.14	481.85	1,060.25	-1,059.92	0.00	0.00	0.00
6,000.00	12.48	65.56	5,872.78	490.79	1,079.93	-1,079.58	0.00	0.00	0.00
6,100.00	12.48	65.56	5,970.41	499.73	1,099.60	-1,099.25	0.00	0.00	0.00
6,200.00	12.48	65.56	6,068.05	508.67	1,119.27	-1,118.92	0.00	0.00	0.00
6,300.00	12.48	65.56	6,165.69	517.61	1,138.95	-1,138.59	0.00	0.00	0.00
6,400.00	12.48	65.56	6,263.33	526.55	1,158.62	-1,158.25	0.00	0.00	0.00
6,500.00	12.48	65.56	6,360.96	535.49	1,178.29	-1,177.92	0.00	0.00	0.00
6,600.00	12.48	65.56	6,458.60	544.43	1,197.97	-1,197.59	0.00	0.00	0.00
6,628.42	12.48	65.56	6,486.35	546.97	1,203.56	-1,203.18	0.00	0.00	0.00
Start DLS 9.00 TFO -155.00									
6,700.00	7.17	43.23	6,556.88	553.43	1,213.67	-1,213.28	9.00	-7.42	-31.19
6,800.00	6.65	321.91	6,656.35	562.55	1,214.38	-1,213.98	9.00	-0.52	-81.33
6,900.00	14.09	291.46	6,754.72	571.58	1,199.44	-1,199.05	9.00	7.44	-30.45
7,000.00	22.68	282.71	6,849.54	580.30	1,169.25	-1,168.84	9.00	8.59	-8.75
7,100.00	31.49	278.64	6,938.49	588.48	1,124.52	-1,124.11	9.00	8.81	-4.07
7,200.00	40.38	276.22	7,019.38	595.93	1,066.38	-1,065.96	9.00	8.89	-2.42
7,300.00	49.31	274.56	7,090.21	602.47	996.24	-995.82	9.00	8.92	-1.67
7,400.00	58.25	273.29	7,149.25	607.93	915.84	-915.41	9.00	8.94	-1.27
7,500.00	67.20	272.24	7,195.03	612.19	827.15	-826.72	9.00	8.95	-1.04
7,600.00	76.16	271.33	7,226.43	615.12	732.36	-731.93	9.00	8.96	-0.91
7,700.00	85.12	270.48	7,242.68	616.67	633.81	-633.38	9.00	8.96	-0.85
7,753.32	89.90	270.04	7,245.00	616.92	580.55	-580.12	9.00	8.96	-0.82
LP(2521 FSL 300 FWL)									
7,753.48	89.90	270.04	7,245.00	616.92	580.39	-579.96	0.00	0.00	0.00
TOP_Falken 32C-9-L(2499' FSL & 300' FWL)									
7,800.00	89.90	270.04	7,245.08	616.95	533.87	-533.44	0.00	0.00	0.00
7,900.00	89.90	270.04	7,245.26	617.03	433.87	-433.44	0.00	0.00	0.00
8,000.00	89.90	270.04	7,245.43	617.11	333.87	-333.44	0.00	0.00	0.00
8,100.00	89.90	270.04	7,245.61	617.19	233.87	-233.44	0.00	0.00	0.00
8,200.00	89.90	270.04	7,245.79	617.26	133.87	-133.44	0.00	0.00	0.00
8,300.00	89.90	270.04	7,245.97	617.34	33.87	-33.44	0.00	0.00	0.00
8,400.00	89.90	270.04	7,246.14	617.42	-66.13	66.56	0.00	0.00	0.00
8,500.00	89.90	270.04	7,246.32	617.50	-166.13	166.56	0.00	0.00	0.00
8,600.00	89.90	270.04	7,246.50	617.57	-266.13	266.56	0.00	0.00	0.00
8,700.00	89.90	270.04	7,246.67	617.65	-366.13	366.56	0.00	0.00	0.00
8,800.00	89.90	270.04	7,246.85	617.73	-466.13	466.56	0.00	0.00	0.00
8,900.00	89.90	270.04	7,247.03	617.81	-566.13	566.56	0.00	0.00	0.00
9,000.00	89.90	270.04	7,247.21	617.88	-666.13	666.56	0.00	0.00	0.00
9,100.00	89.90	270.04	7,247.38	617.96	-766.13	766.56	0.00	0.00	0.00
9,200.00	89.90	270.04	7,247.56	618.04	-866.13	866.56	0.00	0.00	0.00
9,300.00	89.90	270.04	7,247.74	618.12	-966.12	966.56	0.00	0.00	0.00
9,400.00	89.90	270.04	7,247.91	618.19	-1,066.12	1,066.56	0.00	0.00	0.00



<b>Database:</b>	EDM 5000.14 Single User Db	<b>Local Co-ordinate Reference:</b>	Well Falken 32C-9-L
<b>Company:</b>	Synergy Resources Corporation	<b>TVD Reference:</b>	GL 4810 & KB 20 @ 4830.00ft ( ASSUMED)
<b>Project:</b>	SEC 12-13 T6N R66W	<b>MD Reference:</b>	GL 4810 & KB 20 @ 4830.00ft ( ASSUMED)
<b>Site:</b>	Falken 9-11 PAD	<b>North Reference:</b>	True
<b>Well:</b>	Falken 32C-9-L	<b>Survey Calculation Method:</b>	Minimum Curvature
<b>Wellbore:</b>	OH		
<b>Design:</b>	Plan #1		

Planned Survey									
Measured Depth (ft)	Inclination (°)	Azimuth (°)	Vertical Depth (ft)	+N/-S (ft)	+E/-W (ft)	Vertical Section (ft)	Dogleg Rate (°/100ft)	Build Rate (°/100ft)	Turn Rate (°/100ft)
9,500.00	89.90	270.04	7,248.09	618.27	-1,166.12	1,166.56	0.00	0.00	0.00
9,600.00	89.90	270.04	7,248.27	618.35	-1,266.12	1,266.56	0.00	0.00	0.00
9,700.00	89.90	270.04	7,248.45	618.43	-1,366.12	1,366.56	0.00	0.00	0.00
9,800.00	89.90	270.04	7,248.62	618.50	-1,466.12	1,466.56	0.00	0.00	0.00
9,900.00	89.90	270.04	7,248.80	618.58	-1,566.12	1,566.56	0.00	0.00	0.00
10,000.00	89.90	270.04	7,248.98	618.66	-1,666.12	1,666.56	0.00	0.00	0.00
10,100.00	89.90	270.04	7,249.15	618.74	-1,766.12	1,766.55	0.00	0.00	0.00
10,200.00	89.90	270.04	7,249.33	618.81	-1,866.12	1,866.55	0.00	0.00	0.00
10,300.00	89.90	270.04	7,249.51	618.89	-1,966.12	1,966.55	0.00	0.00	0.00
10,400.00	89.90	270.04	7,249.69	618.97	-2,066.12	2,066.55	0.00	0.00	0.00
10,500.00	89.90	270.04	7,249.86	619.05	-2,166.12	2,166.55	0.00	0.00	0.00
10,600.00	89.90	270.04	7,250.04	619.12	-2,266.12	2,266.55	0.00	0.00	0.00
10,700.00	89.90	270.04	7,250.22	619.20	-2,366.12	2,366.55	0.00	0.00	0.00
10,800.00	89.90	270.04	7,250.39	619.28	-2,466.12	2,466.55	0.00	0.00	0.00
10,900.00	89.90	270.04	7,250.57	619.36	-2,566.12	2,566.55	0.00	0.00	0.00
11,000.00	89.90	270.04	7,250.75	619.43	-2,666.12	2,666.55	0.00	0.00	0.00
11,100.00	89.90	270.04	7,250.93	619.51	-2,766.12	2,766.55	0.00	0.00	0.00
11,200.00	89.90	270.04	7,251.10	619.59	-2,866.12	2,866.55	0.00	0.00	0.00
11,300.00	89.90	270.04	7,251.28	619.67	-2,966.12	2,966.55	0.00	0.00	0.00
11,400.00	89.90	270.04	7,251.46	619.74	-3,066.12	3,066.55	0.00	0.00	0.00
11,500.00	89.90	270.04	7,251.63	619.82	-3,166.12	3,166.55	0.00	0.00	0.00
11,600.00	89.90	270.04	7,251.81	619.90	-3,266.12	3,266.55	0.00	0.00	0.00
11,700.00	89.90	270.04	7,251.99	619.98	-3,366.12	3,366.55	0.00	0.00	0.00
11,800.00	89.90	270.04	7,252.17	620.05	-3,466.12	3,466.55	0.00	0.00	0.00
11,900.00	89.90	270.04	7,252.34	620.13	-3,566.12	3,566.55	0.00	0.00	0.00
12,000.00	89.90	270.04	7,252.52	620.21	-3,666.12	3,666.55	0.00	0.00	0.00
12,100.00	89.90	270.04	7,252.70	620.29	-3,766.12	3,766.55	0.00	0.00	0.00
12,200.00	89.90	270.04	7,252.87	620.36	-3,866.12	3,866.55	0.00	0.00	0.00
12,300.00	89.90	270.04	7,253.05	620.44	-3,966.12	3,966.55	0.00	0.00	0.00
12,400.00	89.90	270.04	7,253.23	620.52	-4,066.12	4,066.55	0.00	0.00	0.00
12,500.00	89.90	270.04	7,253.41	620.60	-4,166.12	4,166.55	0.00	0.00	0.00
12,600.00	89.90	270.04	7,253.58	620.67	-4,266.12	4,266.55	0.00	0.00	0.00
12,700.00	89.90	270.04	7,253.76	620.75	-4,366.12	4,366.55	0.00	0.00	0.00
12,800.00	89.90	270.04	7,253.94	620.83	-4,466.12	4,466.55	0.00	0.00	0.00
12,900.00	89.90	270.04	7,254.11	620.91	-4,566.12	4,566.55	0.00	0.00	0.00
13,000.00	89.90	270.04	7,254.29	620.98	-4,666.12	4,666.55	0.00	0.00	0.00
13,100.00	89.90	270.04	7,254.47	621.06	-4,766.12	4,766.55	0.00	0.00	0.00
13,200.00	89.90	270.04	7,254.65	621.14	-4,866.12	4,866.55	0.00	0.00	0.00
13,300.00	89.90	270.04	7,254.82	621.22	-4,966.12	4,966.55	0.00	0.00	0.00
13,400.00	89.90	270.04	7,255.00	621.29	-5,066.12	5,066.55	0.00	0.00	0.00
13,500.00	89.90	270.04	7,255.18	621.37	-5,166.12	5,166.55	0.00	0.00	0.00
13,600.00	89.90	270.04	7,255.35	621.45	-5,266.12	5,266.55	0.00	0.00	0.00
13,700.00	89.90	270.04	7,255.53	621.53	-5,366.12	5,366.55	0.00	0.00	0.00
13,800.00	89.90	270.04	7,255.71	621.60	-5,466.12	5,466.55	0.00	0.00	0.00
13,900.00	89.90	270.04	7,255.89	621.68	-5,566.12	5,566.55	0.00	0.00	0.00
14,000.00	89.90	270.04	7,256.06	621.76	-5,666.12	5,666.55	0.00	0.00	0.00
14,100.00	89.90	270.04	7,256.24	621.84	-5,766.12	5,766.55	0.00	0.00	0.00
14,200.00	89.90	270.04	7,256.42	621.91	-5,866.12	5,866.55	0.00	0.00	0.00
14,300.00	89.90	270.04	7,256.59	621.99	-5,966.12	5,966.55	0.00	0.00	0.00
14,400.00	89.90	270.04	7,256.77	622.07	-6,066.12	6,066.55	0.00	0.00	0.00
14,500.00	89.90	270.04	7,256.95	622.15	-6,166.12	6,166.55	0.00	0.00	0.00
14,600.00	89.90	270.04	7,257.13	622.22	-6,266.12	6,266.55	0.00	0.00	0.00
14,700.00	89.90	270.04	7,257.30	622.30	-6,366.11	6,366.55	0.00	0.00	0.00
14,800.00	89.90	270.04	7,257.48	622.38	-6,466.11	6,466.55	0.00	0.00	0.00



<b>Database:</b>	EDM 5000.14 Single User Db	<b>Local Co-ordinate Reference:</b>	Well Falken 32C-9-L
<b>Company:</b>	Synergy Resources Corporation	<b>TVD Reference:</b>	GL 4810 & KB 20 @ 4830.00ft ( ASSUMED)
<b>Project:</b>	SEC 12-13 T6N R66W	<b>MD Reference:</b>	GL 4810 & KB 20 @ 4830.00ft ( ASSUMED)
<b>Site:</b>	Falken 9-11 PAD	<b>North Reference:</b>	True
<b>Well:</b>	Falken 32C-9-L	<b>Survey Calculation Method:</b>	Minimum Curvature
<b>Wellbore:</b>	OH		
<b>Design:</b>	Plan #1		

Planned Survey									
Measured Depth (ft)	Inclination (°)	Azimuth (°)	Vertical Depth (ft)	+N/-S (ft)	+E/-W (ft)	Vertical Section (ft)	Dogleg Rate (°/100ft)	Build Rate (°/100ft)	Turn Rate (°/100ft)
14,900.00	89.90	270.04	7,257.66	622.46	-6,566.11	6,566.55	0.00	0.00	0.00
15,000.00	89.90	270.04	7,257.83	622.53	-6,666.11	6,666.55	0.00	0.00	0.00
15,100.00	89.90	270.04	7,258.01	622.61	-6,766.11	6,766.55	0.00	0.00	0.00
15,200.00	89.90	270.04	7,258.19	622.69	-6,866.11	6,866.55	0.00	0.00	0.00
15,300.00	89.90	270.04	7,258.37	622.77	-6,966.11	6,966.55	0.00	0.00	0.00
15,400.00	89.90	270.04	7,258.54	622.84	-7,066.11	7,066.55	0.00	0.00	0.00
15,500.00	89.90	270.04	7,258.72	622.92	-7,166.11	7,166.55	0.00	0.00	0.00
15,600.00	89.90	270.04	7,258.90	623.00	-7,266.11	7,266.55	0.00	0.00	0.00
15,700.00	89.90	270.04	7,259.08	623.08	-7,366.11	7,366.55	0.00	0.00	0.00
15,800.00	89.90	270.04	7,259.25	623.15	-7,466.11	7,466.55	0.00	0.00	0.00
15,900.00	89.90	270.04	7,259.43	623.23	-7,566.11	7,566.55	0.00	0.00	0.00
16,000.00	89.90	270.04	7,259.61	623.31	-7,666.11	7,666.55	0.00	0.00	0.00
16,100.00	89.90	270.04	7,259.78	623.39	-7,766.11	7,766.55	0.00	0.00	0.00
16,200.00	89.90	270.04	7,259.96	623.46	-7,866.11	7,866.55	0.00	0.00	0.00
16,300.00	89.90	270.04	7,260.14	623.54	-7,966.11	7,966.55	0.00	0.00	0.00
16,400.00	89.90	270.04	7,260.32	623.62	-8,066.11	8,066.55	0.00	0.00	0.00
16,500.00	89.90	270.04	7,260.49	623.69	-8,166.11	8,166.55	0.00	0.00	0.00
16,600.00	89.90	270.04	7,260.67	623.77	-8,266.11	8,266.54	0.00	0.00	0.00
16,700.00	89.90	270.04	7,260.85	623.85	-8,366.11	8,366.54	0.00	0.00	0.00
16,800.00	89.90	270.04	7,261.02	623.93	-8,466.11	8,466.54	0.00	0.00	0.00
16,900.00	89.90	270.04	7,261.20	624.00	-8,566.11	8,566.54	0.00	0.00	0.00
17,000.00	89.90	270.04	7,261.38	624.08	-8,666.11	8,666.54	0.00	0.00	0.00
17,100.00	89.90	270.04	7,261.56	624.16	-8,766.11	8,766.54	0.00	0.00	0.00
17,200.00	89.90	270.04	7,261.73	624.24	-8,866.11	8,866.54	0.00	0.00	0.00
17,300.00	89.90	270.04	7,261.91	624.31	-8,966.11	8,966.54	0.00	0.00	0.00
17,400.00	89.90	270.04	7,262.09	624.39	-9,066.11	9,066.54	0.00	0.00	0.00
17,500.00	89.90	270.04	7,262.26	624.47	-9,166.11	9,166.54	0.00	0.00	0.00
17,600.00	89.90	270.04	7,262.44	624.55	-9,266.11	9,266.54	0.00	0.00	0.00
17,700.00	89.90	270.04	7,262.62	624.62	-9,366.11	9,366.54	0.00	0.00	0.00
17,800.00	89.90	270.04	7,262.80	624.70	-9,466.11	9,466.54	0.00	0.00	0.00
17,900.00	89.90	270.04	7,262.97	624.78	-9,566.11	9,566.54	0.00	0.00	0.00
18,000.00	89.90	270.04	7,263.15	624.86	-9,666.11	9,666.54	0.00	0.00	0.00
18,100.00	89.90	270.04	7,263.33	624.93	-9,766.11	9,766.54	0.00	0.00	0.00
18,200.00	89.90	270.04	7,263.50	625.01	-9,866.11	9,866.54	0.00	0.00	0.00
18,300.00	89.90	270.04	7,263.68	625.09	-9,966.11	9,966.54	0.00	0.00	0.00
18,400.00	89.90	270.04	7,263.86	625.17	-10,066.11	10,066.54	0.00	0.00	0.00
18,500.00	89.90	270.04	7,264.04	625.24	-10,166.11	10,166.54	0.00	0.00	0.00
18,600.00	89.90	270.04	7,264.21	625.32	-10,266.11	10,266.54	0.00	0.00	0.00
18,700.00	89.90	270.04	7,264.39	625.40	-10,366.11	10,366.54	0.00	0.00	0.00
18,800.00	89.90	270.04	7,264.57	625.48	-10,466.11	10,466.54	0.00	0.00	0.00
18,900.00	89.90	270.04	7,264.74	625.55	-10,566.11	10,566.54	0.00	0.00	0.00
19,000.00	89.90	270.04	7,264.92	625.63	-10,666.11	10,666.54	0.00	0.00	0.00
19,044.52	89.90	270.04	7,265.00	625.67	-10,710.63	10,711.06	0.00	0.00	0.00
TD at 19044.52 - PBHL_TOP_Falken 32C-9-L(2509' FSL & 300' FEL)									

<b>Database:</b>	EDM 5000.14 Single User Db	<b>Local Co-ordinate Reference:</b>	Well Falken 32C-9-L
<b>Company:</b>	Synergy Resources Corporation	<b>TVD Reference:</b>	GL 4810 & KB 20 @ 4830.00ft ( ASSUMED)
<b>Project:</b>	SEC 12-13 T6N R66W	<b>MD Reference:</b>	GL 4810 & KB 20 @ 4830.00ft ( ASSUMED)
<b>Site:</b>	Falken 9-11 PAD	<b>North Reference:</b>	True
<b>Well:</b>	Falken 32C-9-L	<b>Survey Calculation Method:</b>	Minimum Curvature
<b>Wellbore:</b>	OH		
<b>Design:</b>	Plan #1		

Design Targets									
Target Name									
- hit/miss target	Dip Angle	Dip Dir.	TVD	+N/-S	+E/-W	Northing	Easting	Latitude	Longitude
- Shape	(°)	(°)	(ft)	(ft)	(ft)	(ft)	(ft)		
TOP_Falken 32C-9-L(24	0.00	0.00	7,245.00	595.30	580.37	1,426,799.37	3,213,059.85	40.5024310	-104.7338580
- plan misses target center by 21.62ft at 7753.48ft MD (7245.00 TVD, 616.92 N, 580.39 E)									
- Point									
PBHL_TOP_Falken 32C	0.00	0.00	7,265.00	625.67	-10,710.63	1,426,732.45	3,201,769.01	40.5025080	-104.7744600
- plan hits target center									
- Point									

Casing Points					
Measured Depth	Vertical Depth			Casing Diameter	Hole Diameter
(ft)	(ft)		Name	(in)	(in)
1,777.45	1,750.00	9 5/8"		9.625	13.500

Plan Annotations				
Measured Depth	Vertical Depth	Local Coordinates		
(ft)	(ft)	+N/-S (ft)	+E/-W (ft)	Comment
200.00	200.00	0.00	0.00	Start Build 2.00
824.00	819.08	28.01	61.63	Start 5804.42 hold at 824.00 MD
6,628.42	6,486.35	546.97	1,203.56	Start DLS 9.00 TFO -155.00
7,753.32	7,245.00	616.92	580.55	LP(2521 FSL 300 FWL)
19,044.52	7,265.00	625.67	-10,710.63	TD at 19044.52