



Project: SEC 12-13 T6N R66W
Site: Falken 9-11 PAD
Well: Falken 4N-14C-S
Wellbore: OH
Design: Plan #1

SECTION DETAILS									
MD	Inc	Azi	TVD	+N/-S	+E/-W	Dleg	TFace	VSect	Target
0.00	0.00	0.00	0.00	0.00	0.00	0.00	0.00	0.00	
200.00	0.00	0.00	200.00	0.00	0.00	0.00	0.00	0.00	
1404.90	24.10	151.68	1369.69	-219.79	118.44	2.00	151.68	-119.06	
6927.91	24.10	151.68	6411.36	-2204.92	1188.22	0.00	0.00	-1194.37	
8047.82	89.53	270.16	7120.00	-2479.37	567.85	9.00	116.52	-574.77	
13209.97	89.53	270.16	7162.00	-2465.19	-4594.10	0.00	0.00	4587.20	PBHL_Falken 4N-14C-S

PROJECT DETAILS: SEC 12-13 T6N R66W

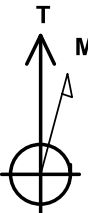
Geodetic System: US State Plane 1983
Datum: North American Datum 1983
Ellipsoid: GRS 1980
Zone: Colorado Northern Zone
Colorado Northern Zone
System Datum: Mean Sea Level

DESIGN TARGET DETAILS

Name	TVD	+N/-S	+E/-W	Northing	Easting	Latitude	Longitude	Shape
TOP_Falken 4N-14C-S	7120.00	-2479.09	567.38	1423500.20	3213073.34	40.4933750	-104.7339120	Point
- plan misses target center by 0.28ft at 8048.30ft MD (7120.00 TVD, -2479.37 N, 567.38 E)								
PBHL_Falken 4N-14C-S	7162.00	-2465.19	-4594.10	1423469.63	3207911.93	40.4934120	-104.7524700	Point
- plan hits target center								

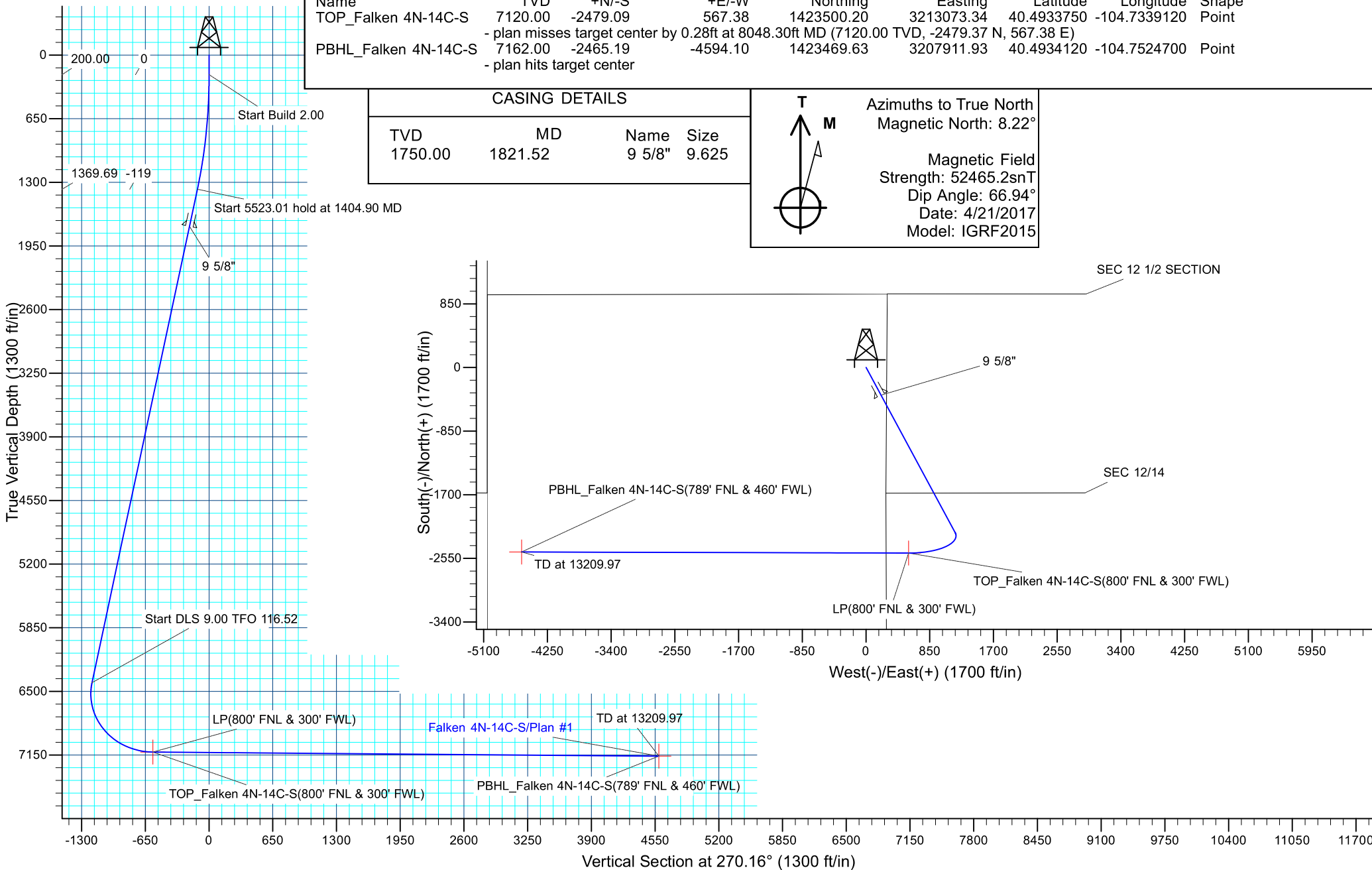
CASING DETAILS

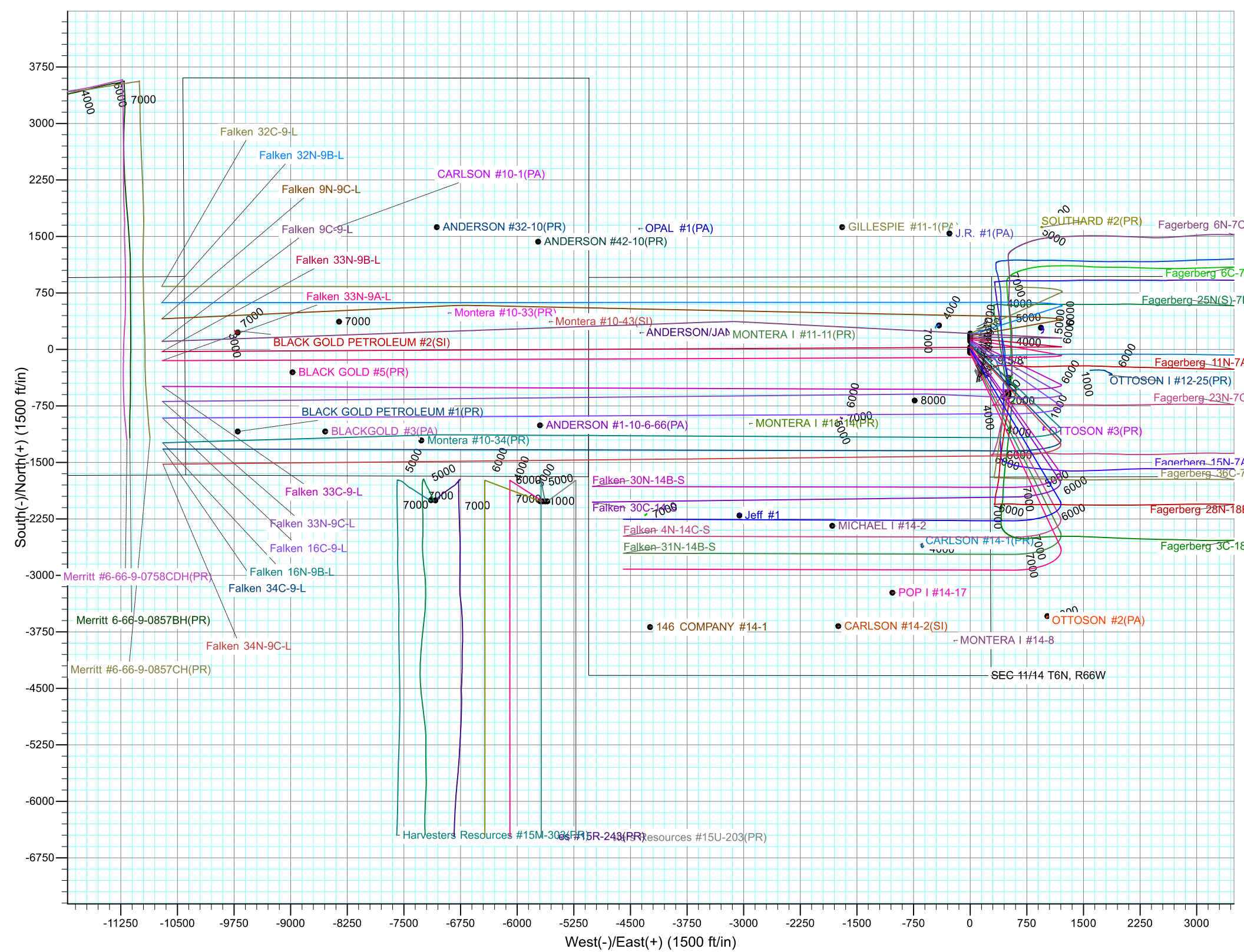
TVD	MD	Name	Size
1750.00	1821.52	9 5/8"	9.625

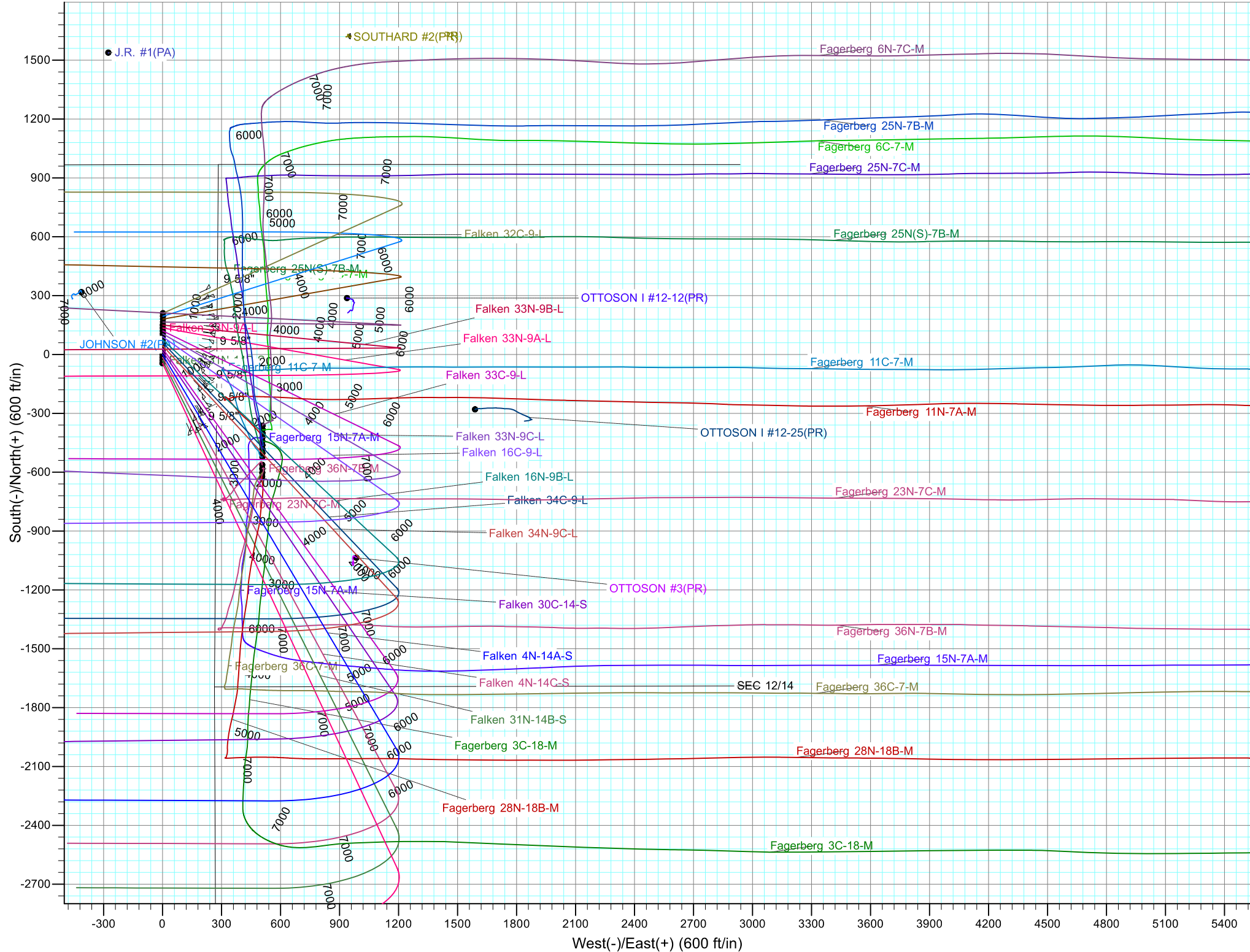


Azimuths to True North
Magnetic North: 8.22°

Magnetic Field
Strength: 52465.2snT
Dip Angle: 66.94°
Date: 4/21/2017
Model: IGRF2015









Synergy Resources Corporation

SEC 12-13 T6N R66W

Falken 9-11 PAD

Falken 4N-14C-S

OH

Plan: Plan #1

Standard Planning Report

25 April, 2017



Database:	EDM 5000.14 Single User Db	Local Co-ordinate Reference:	Well Falken 4N-14C-S
Company:	Synergy Resources Corporation	TVD Reference:	GL 4810 & KB 20 @ 4830.00ft (Original Well Elev)
Project:	SEC 12-13 T6N R66W	MD Reference:	GL 4810 & KB 20 @ 4830.00ft (Original Well Elev)
Site:	Falken 9-11 PAD	North Reference:	True
Well:	Falken 4N-14C-S	Survey Calculation Method:	Minimum Curvature
Wellbore:	OH		
Design:	Plan #1		

Project	SEC 12-13 T6N R66W		
Map System:	US State Plane 1983	System Datum:	Mean Sea Level
Geo Datum:	North American Datum 1983		
Map Zone:	Colorado Northern Zone		

Site		Falken 9-11 PAD			
Site Position:		Northing:	1,426,199.10 ft	Latitude:	40.5007970
From:	Lat/Long	Easting:	3,212,484.63 ft	Longitude:	-104.7359450
Position Uncertainty:	3.28 ft	Slot Radius:	13.200 in	Grid Convergence:	0.49 °

Well	Falken 4N-14C-S, 1679' FSL & 276' FEL					
Well Position	+N/-S	-224.78 ft	Northing:	1,425,974.31 ft	Latitude:	40.5001800
	+E/-W	-1.95 ft	Easting:	3,212,484.62 ft	Longitude:	-104.7359520
Position Uncertainty		3.28 ft	Wellhead Elevation:		Ground Level:	4,810.00 ft

Wellbore	OH				
Magnetics	Model Name	Sample Date	Declination (°)	Dip Angle (°)	Field Strength (nT)
	IGRF2015	4/21/2017	8.22	66.94	52,465

Design	Plan #1			
Audit Notes:				
Version:	Phase:	PLAN	Tie On Depth:	0.00
Vertical Section:	Depth From (TVD) (ft)	+N/-S (ft)	+E/-W (ft)	Direction (°)
	0.00	0.00	0.00	270.16

Plan Survey Tool Program	Date	4/24/2017		
Depth From (ft)	Depth To (ft)	Survey (Wellbore)	Tool Name	Remarks
1	0.00	13,209.97 Plan #1 (OH)	MWD+IFR1	
			OWSG MWD + IFR1	

Plan Sections										
Measured Depth (ft)	Inclination (°)	Azimuth (°)	Vertical Depth (ft)	+N/-S (ft)	+E/-W (ft)	Dogleg Rate (°/100ft)	Build Rate (°/100ft)	Turn Rate (°/100ft)	TFO (°)	Target
0.00	0.00	0.00	0.00	0.00	0.00	0.00	0.00	0.00	0.00	
200.00	0.00	0.00	200.00	0.00	0.00	0.00	0.00	0.00	0.00	
1,404.90	24.10	151.68	1,369.69	-219.79	118.44	2.00	2.00	0.00	151.68	
6,927.91	24.10	151.68	6,411.36	-2,204.92	1,188.22	0.00	0.00	0.00	0.00	
8,047.82	89.53	270.16	7,120.00	-2,479.37	567.85	9.00	5.84	10.58	116.52	
13,209.97	89.53	270.16	7,162.00	-2,465.19	-4,594.10	0.00	0.00	0.00	0.00	PBHL_Falken 4N-14C

Database:	EDM 5000.14 Single User Db	Local Co-ordinate Reference:	Well Falken 4N-14C-S
Company:	Synergy Resources Corporation	TVD Reference:	GL 4810 & KB 20 @ 4830.00ft (Original Well Elev)
Project:	SEC 12-13 T6N R66W	MD Reference:	GL 4810 & KB 20 @ 4830.00ft (Original Well Elev)
Site:	Falken 9-11 PAD	North Reference:	True
Well:	Falken 4N-14C-S	Survey Calculation Method:	Minimum Curvature
Wellbore:	OH		
Design:	Plan #1		

Planned Survey

Measured Depth (ft)	Inclination (°)	Azimuth (°)	Vertical Depth (ft)	+N/-S (ft)	+E/-W (ft)	Vertical Section (ft)	Dogleg Rate (°/100ft)	Build Rate (°/100ft)	Turn Rate (°/100ft)
0.00	0.00	0.00	0.00	0.00	0.00	0.00	0.00	0.00	0.00
100.00	0.00	0.00	100.00	0.00	0.00	0.00	0.00	0.00	0.00
200.00	0.00	0.00	200.00	0.00	0.00	0.00	0.00	0.00	0.00
Start Build 2.00									
300.00	2.00	151.68	299.98	-1.54	0.83	-0.83	2.00	2.00	0.00
400.00	4.00	151.68	399.84	-6.14	3.31	-3.33	2.00	2.00	0.00
500.00	6.00	151.68	499.45	-13.82	7.44	-7.48	2.00	2.00	0.00
600.00	8.00	151.68	598.70	-24.54	13.23	-13.29	2.00	2.00	0.00
700.00	10.00	151.68	697.47	-38.31	20.65	-20.75	2.00	2.00	0.00
800.00	12.00	151.68	795.62	-55.11	29.70	-29.85	2.00	2.00	0.00
900.00	14.00	151.68	893.06	-74.91	40.37	-40.58	2.00	2.00	0.00
1,000.00	16.00	151.68	989.64	-97.69	52.65	-52.92	2.00	2.00	0.00
1,100.00	18.00	151.68	1,085.27	-123.43	66.52	-66.86	2.00	2.00	0.00
1,200.00	20.00	151.68	1,179.82	-152.09	81.96	-82.38	2.00	2.00	0.00
1,300.00	22.00	151.68	1,273.17	-183.64	98.96	-99.47	2.00	2.00	0.00
1,400.00	24.00	151.68	1,365.21	-218.03	117.50	-118.10	2.00	2.00	0.00
1,404.90	24.10	151.68	1,369.69	-219.79	118.44	-119.06	2.00	2.00	0.00
Start 5523.01 hold at 1404.90 MD									
1,500.00	24.10	151.68	1,456.50	-253.97	136.86	-137.57	0.00	0.00	0.00
1,600.00	24.10	151.68	1,547.79	-289.91	156.23	-157.04	0.00	0.00	0.00
1,700.00	24.10	151.68	1,639.07	-325.86	175.60	-176.51	0.00	0.00	0.00
1,800.00	24.10	151.68	1,730.36	-361.80	194.97	-195.98	0.00	0.00	0.00
1,821.52	24.10	151.68	1,750.00	-369.53	199.14	-200.17	0.00	0.00	0.00
9 5/8"									
1,900.00	24.10	151.68	1,821.64	-397.74	214.34	-215.45	0.00	0.00	0.00
2,000.00	24.10	151.68	1,912.93	-433.69	233.71	-234.92	0.00	0.00	0.00
2,100.00	24.10	151.68	2,004.21	-469.63	253.08	-254.39	0.00	0.00	0.00
2,200.00	24.10	151.68	2,095.50	-505.57	272.45	-273.86	0.00	0.00	0.00
2,300.00	24.10	151.68	2,186.78	-541.51	291.82	-293.33	0.00	0.00	0.00
2,400.00	24.10	151.68	2,278.06	-577.46	311.19	-312.80	0.00	0.00	0.00
2,500.00	24.10	151.68	2,369.35	-613.40	330.56	-332.27	0.00	0.00	0.00
2,600.00	24.10	151.68	2,460.63	-649.34	349.93	-351.74	0.00	0.00	0.00
2,700.00	24.10	151.68	2,551.92	-685.29	369.30	-371.21	0.00	0.00	0.00
2,800.00	24.10	151.68	2,643.20	-721.23	388.67	-390.68	0.00	0.00	0.00
2,900.00	24.10	151.68	2,734.49	-757.17	408.04	-410.15	0.00	0.00	0.00
3,000.00	24.10	151.68	2,825.77	-793.12	427.41	-429.62	0.00	0.00	0.00
3,100.00	24.10	151.68	2,917.06	-829.06	446.78	-449.09	0.00	0.00	0.00
3,200.00	24.10	151.68	3,008.34	-865.00	466.14	-468.56	0.00	0.00	0.00
3,300.00	24.10	151.68	3,099.63	-900.94	485.51	-488.03	0.00	0.00	0.00
3,400.00	24.10	151.68	3,190.91	-936.89	504.88	-507.50	0.00	0.00	0.00
3,500.00	24.10	151.68	3,282.20	-972.83	524.25	-526.97	0.00	0.00	0.00
3,600.00	24.10	151.68	3,373.48	-1,008.77	543.62	-546.44	0.00	0.00	0.00
3,700.00	24.10	151.68	3,464.77	-1,044.72	562.99	-565.91	0.00	0.00	0.00
3,800.00	24.10	151.68	3,556.05	-1,080.66	582.36	-585.38	0.00	0.00	0.00
3,900.00	24.10	151.68	3,647.34	-1,116.60	601.73	-604.85	0.00	0.00	0.00
4,000.00	24.10	151.68	3,738.62	-1,152.55	621.10	-624.32	0.00	0.00	0.00
4,100.00	24.10	151.68	3,829.91	-1,188.49	640.47	-643.79	0.00	0.00	0.00
4,200.00	24.10	151.68	3,921.19	-1,224.43	659.84	-663.26	0.00	0.00	0.00
4,300.00	24.10	151.68	4,012.48	-1,260.37	679.21	-682.73	0.00	0.00	0.00
4,400.00	24.10	151.68	4,103.76	-1,296.32	698.58	-702.20	0.00	0.00	0.00
4,500.00	24.10	151.68	4,195.05	-1,332.26	717.95	-721.67	0.00	0.00	0.00
4,600.00	24.10	151.68	4,286.33	-1,368.20	737.32	-741.14	0.00	0.00	0.00

Database:	EDM 5000.14 Single User Db	Local Co-ordinate Reference:	Well Falken 4N-14C-S
Company:	Synergy Resources Corporation	TVD Reference:	GL 4810 & KB 20 @ 4830.00ft (Original Well Elev)
Project:	SEC 12-13 T6N R66W	MD Reference:	GL 4810 & KB 20 @ 4830.00ft (Original Well Elev)
Site:	Falken 9-11 PAD	North Reference:	True
Well:	Falken 4N-14C-S	Survey Calculation Method:	Minimum Curvature
Wellbore:	OH		
Design:	Plan #1		

Planned Survey									
Measured Depth (ft)	Inclination (°)	Azimuth (°)	Vertical Depth (ft)	+N/-S (ft)	+E/-W (ft)	Vertical Section (ft)	Dogleg Rate (°/100ft)	Build Rate (°/100ft)	Turn Rate (°/100ft)
4,700.00	24.10	151.68	4,377.62	-1,404.15	756.69	-760.61	0.00	0.00	0.00
4,800.00	24.10	151.68	4,468.90	-1,440.09	776.06	-780.08	0.00	0.00	0.00
4,900.00	24.10	151.68	4,560.19	-1,476.03	795.43	-799.54	0.00	0.00	0.00
5,000.00	24.10	151.68	4,651.47	-1,511.98	814.80	-819.01	0.00	0.00	0.00
5,100.00	24.10	151.68	4,742.76	-1,547.92	834.17	-838.48	0.00	0.00	0.00
5,200.00	24.10	151.68	4,834.04	-1,583.86	853.53	-857.95	0.00	0.00	0.00
5,300.00	24.10	151.68	4,925.33	-1,619.80	872.90	-877.42	0.00	0.00	0.00
5,400.00	24.10	151.68	5,016.61	-1,655.75	892.27	-896.89	0.00	0.00	0.00
5,500.00	24.10	151.68	5,107.90	-1,691.69	911.64	-916.36	0.00	0.00	0.00
5,600.00	24.10	151.68	5,199.18	-1,727.63	931.01	-935.83	0.00	0.00	0.00
5,700.00	24.10	151.68	5,290.46	-1,763.58	950.38	-955.30	0.00	0.00	0.00
5,800.00	24.10	151.68	5,381.75	-1,799.52	969.75	-974.77	0.00	0.00	0.00
5,900.00	24.10	151.68	5,473.03	-1,835.46	989.12	-994.24	0.00	0.00	0.00
6,000.00	24.10	151.68	5,564.32	-1,871.41	1,008.49	-1,013.71	0.00	0.00	0.00
6,100.00	24.10	151.68	5,655.60	-1,907.35	1,027.86	-1,033.18	0.00	0.00	0.00
6,200.00	24.10	151.68	5,746.89	-1,943.29	1,047.23	-1,052.65	0.00	0.00	0.00
6,300.00	24.10	151.68	5,838.17	-1,979.23	1,066.60	-1,072.12	0.00	0.00	0.00
6,400.00	24.10	151.68	5,929.46	-2,015.18	1,085.97	-1,091.59	0.00	0.00	0.00
6,500.00	24.10	151.68	6,020.74	-2,051.12	1,105.34	-1,111.06	0.00	0.00	0.00
6,600.00	24.10	151.68	6,112.03	-2,087.06	1,124.71	-1,130.53	0.00	0.00	0.00
6,700.00	24.10	151.68	6,203.31	-2,123.01	1,144.08	-1,150.00	0.00	0.00	0.00
6,800.00	24.10	151.68	6,294.60	-2,158.95	1,163.45	-1,169.47	0.00	0.00	0.00
6,900.00	24.10	151.68	6,385.88	-2,194.89	1,182.82	-1,188.94	0.00	0.00	0.00
6,927.91	24.10	151.68	6,411.36	-2,204.92	1,188.22	-1,194.37	0.00	0.00	0.00
Start DLS 9.00 TFO 116.52									
7,000.00	21.94	167.38	6,477.77	-2,231.05	1,198.16	-1,204.38	9.00	-3.00	21.78
7,100.00	21.82	191.69	6,570.76	-2,267.55	1,198.47	-1,204.80	9.00	-0.12	24.31
7,200.00	25.00	213.03	6,662.68	-2,303.53	1,183.15	-1,189.58	9.00	3.19	21.34
7,300.00	30.47	228.50	6,751.28	-2,338.12	1,152.58	-1,159.11	9.00	5.47	15.47
7,400.00	37.22	239.23	6,834.35	-2,370.46	1,107.51	-1,114.13	9.00	6.75	10.74
7,500.00	44.68	246.96	6,909.88	-2,399.76	1,049.05	-1,055.75	9.00	7.46	7.72
7,600.00	52.53	252.83	6,975.98	-2,425.28	978.64	-985.41	9.00	7.85	5.88
7,700.00	60.62	257.57	7,031.04	-2,446.41	898.01	-904.83	9.00	8.09	4.74
7,800.00	68.85	261.61	7,073.70	-2,462.63	809.14	-816.01	9.00	8.23	4.03
7,900.00	77.17	265.21	7,102.90	-2,473.53	714.23	-721.14	9.00	8.32	3.60
8,000.00	85.53	268.58	7,117.94	-2,478.84	615.62	-622.54	9.00	8.36	3.37
8,047.82	89.53	270.16	7,120.00	-2,479.37	567.85	-574.77	9.00	8.38	3.30
LP(800' FNL & 300' FWL)									
8,048.30	89.53	270.16	7,120.00	-2,479.37	567.38	-574.30	0.00	0.00	0.00
TOP_Falken 4N-14C-S(800' FNL & 300' FWL)									
8,100.00	89.53	270.16	7,120.42	-2,479.23	515.68	-522.60	0.00	0.00	0.00
8,200.00	89.53	270.16	7,121.24	-2,478.95	415.68	-422.60	0.00	0.00	0.00
8,300.00	89.53	270.16	7,122.05	-2,478.68	315.68	-322.60	0.00	0.00	0.00
8,400.00	89.53	270.16	7,122.86	-2,478.40	215.69	-222.61	0.00	0.00	0.00
8,500.00	89.53	270.16	7,123.68	-2,478.13	115.69	-122.61	0.00	0.00	0.00
8,600.00	89.53	270.16	7,124.49	-2,477.85	15.70	-22.61	0.00	0.00	0.00
8,700.00	89.53	270.16	7,125.30	-2,477.58	-84.30	77.38	0.00	0.00	0.00
8,800.00	89.53	270.16	7,126.12	-2,477.30	-184.30	177.38	0.00	0.00	0.00
8,900.00	89.53	270.16	7,126.93	-2,477.03	-284.29	277.38	0.00	0.00	0.00
9,000.00	89.53	270.16	7,127.75	-2,476.75	-384.29	377.37	0.00	0.00	0.00
9,100.00	89.53	270.16	7,128.56	-2,476.48	-484.29	477.37	0.00	0.00	0.00

Database:	EDM 5000.14 Single User Db	Local Co-ordinate Reference:	Well Falken 4N-14C-S
Company:	Synergy Resources Corporation	TVD Reference:	GL 4810 & KB 20 @ 4830.00ft (Original Well Elev)
Project:	SEC 12-13 T6N R66W	MD Reference:	GL 4810 & KB 20 @ 4830.00ft (Original Well Elev)
Site:	Falken 9-11 PAD	North Reference:	True
Well:	Falken 4N-14C-S	Survey Calculation Method:	Minimum Curvature
Wellbore:	OH		
Design:	Plan #1		

Planned Survey									
Measured Depth (ft)	Inclination (°)	Azimuth (°)	Vertical Depth (ft)	+N/-S (ft)	+E/-W (ft)	Vertical Section (ft)	Dogleg Rate (°/100ft)	Build Rate (°/100ft)	Turn Rate (°/100ft)
9,200.00	89.53	270.16	7,129.37	-2,476.20	-584.28	577.37	0.00	0.00	0.00
9,300.00	89.53	270.16	7,130.19	-2,475.93	-684.28	677.36	0.00	0.00	0.00
9,400.00	89.53	270.16	7,131.00	-2,475.65	-784.28	777.36	0.00	0.00	0.00
9,500.00	89.53	270.16	7,131.81	-2,475.38	-884.27	877.36	0.00	0.00	0.00
9,600.00	89.53	270.16	7,132.63	-2,475.11	-984.27	977.35	0.00	0.00	0.00
9,700.00	89.53	270.16	7,133.44	-2,474.83	-1,084.26	1,077.35	0.00	0.00	0.00
9,800.00	89.53	270.16	7,134.25	-2,474.56	-1,184.26	1,177.35	0.00	0.00	0.00
9,900.00	89.53	270.16	7,135.07	-2,474.28	-1,284.26	1,277.34	0.00	0.00	0.00
10,000.00	89.53	270.16	7,135.88	-2,474.01	-1,384.25	1,377.34	0.00	0.00	0.00
10,100.00	89.53	270.16	7,136.70	-2,473.73	-1,484.25	1,477.34	0.00	0.00	0.00
10,200.00	89.53	270.16	7,137.51	-2,473.46	-1,584.25	1,577.33	0.00	0.00	0.00
10,300.00	89.53	270.16	7,138.32	-2,473.18	-1,684.24	1,677.33	0.00	0.00	0.00
10,400.00	89.53	270.16	7,139.14	-2,472.91	-1,784.24	1,777.33	0.00	0.00	0.00
10,500.00	89.53	270.16	7,139.95	-2,472.63	-1,884.23	1,877.32	0.00	0.00	0.00
10,600.00	89.53	270.16	7,140.76	-2,472.36	-1,984.23	1,977.32	0.00	0.00	0.00
10,700.00	89.53	270.16	7,141.58	-2,472.08	-2,084.23	2,077.32	0.00	0.00	0.00
10,800.00	89.53	270.16	7,142.39	-2,471.81	-2,184.22	2,177.31	0.00	0.00	0.00
10,900.00	89.53	270.16	7,143.20	-2,471.53	-2,284.22	2,277.31	0.00	0.00	0.00
11,000.00	89.53	270.16	7,144.02	-2,471.26	-2,384.22	2,377.31	0.00	0.00	0.00
11,100.00	89.53	270.16	7,144.83	-2,470.99	-2,484.21	2,477.30	0.00	0.00	0.00
11,200.00	89.53	270.16	7,145.65	-2,470.71	-2,584.21	2,577.30	0.00	0.00	0.00
11,300.00	89.53	270.16	7,146.46	-2,470.44	-2,684.21	2,677.30	0.00	0.00	0.00
11,400.00	89.53	270.16	7,147.27	-2,470.16	-2,784.20	2,777.29	0.00	0.00	0.00
11,500.00	89.53	270.16	7,148.09	-2,469.89	-2,884.20	2,877.29	0.00	0.00	0.00
11,600.00	89.53	270.16	7,148.90	-2,469.61	-2,984.19	2,977.29	0.00	0.00	0.00
11,700.00	89.53	270.16	7,149.71	-2,469.34	-3,084.19	3,077.28	0.00	0.00	0.00
11,800.00	89.53	270.16	7,150.53	-2,469.06	-3,184.19	3,177.28	0.00	0.00	0.00
11,900.00	89.53	270.16	7,151.34	-2,468.79	-3,284.18	3,277.28	0.00	0.00	0.00
12,000.00	89.53	270.16	7,152.16	-2,468.51	-3,384.18	3,377.27	0.00	0.00	0.00
12,100.00	89.53	270.16	7,152.97	-2,468.24	-3,484.18	3,477.27	0.00	0.00	0.00
12,200.00	89.53	270.16	7,153.78	-2,467.96	-3,584.17	3,577.27	0.00	0.00	0.00
12,300.00	89.53	270.16	7,154.60	-2,467.69	-3,684.17	3,677.26	0.00	0.00	0.00
12,400.00	89.53	270.16	7,155.41	-2,467.41	-3,784.16	3,777.26	0.00	0.00	0.00
12,500.00	89.53	270.16	7,156.22	-2,467.14	-3,884.16	3,877.26	0.00	0.00	0.00
12,600.00	89.53	270.16	7,157.04	-2,466.87	-3,984.16	3,977.25	0.00	0.00	0.00
12,700.00	89.53	270.16	7,157.85	-2,466.59	-4,084.15	4,077.25	0.00	0.00	0.00
12,800.00	89.53	270.16	7,158.66	-2,466.32	-4,184.15	4,177.25	0.00	0.00	0.00
12,900.00	89.53	270.16	7,159.48	-2,466.04	-4,284.15	4,277.24	0.00	0.00	0.00
13,000.00	89.53	270.16	7,160.29	-2,465.77	-4,384.14	4,377.24	0.00	0.00	0.00
13,100.00	89.53	270.16	7,161.11	-2,465.49	-4,484.14	4,477.24	0.00	0.00	0.00
13,200.00	89.53	270.16	7,161.92	-2,465.22	-4,584.14	4,577.23	0.00	0.00	0.00
13,209.97	89.53	270.16	7,162.00	-2,465.19	-4,594.10	4,587.20	0.00	0.00	0.00
TD at 13209.97 - PBHL_Falken 4N-14C-S(789' FNL & 460' FWL)									

Database:	EDM 5000.14 Single User Db	Local Co-ordinate Reference:	Well Falken 4N-14C-S
Company:	Synergy Resources Corporation	TVD Reference:	GL 4810 & KB 20 @ 4830.00ft (Original Well Elev)
Project:	SEC 12-13 T6N R66W	MD Reference:	GL 4810 & KB 20 @ 4830.00ft (Original Well Elev)
Site:	Falken 9-11 PAD	North Reference:	True
Well:	Falken 4N-14C-S	Survey Calculation Method:	Minimum Curvature
Wellbore:	OH		
Design:	Plan #1		

Design Targets									
Target Name	Dip Angle	Dip Dir.	TVD	+N/-S	+E/-W	Northing	Easting	Latitude	Longitude
- hit/miss target	(°)	(°)	(ft)	(ft)	(ft)	(ft)	(ft)		
- Shape									
TOP_Falken 4N-14C-S(i	0.00	0.00	7,120.00	-2,479.09	567.38	1,423,500.20	3,213,073.34	40.4933750	-104.7339120
- plan misses target center by 0.28ft at 8048.30ft MD (7120.00 TVD, -2479.37 N, 567.38 E)									
- Point									
PBHL_Falken 4N-14C-S	0.00	0.00	7,162.00	-2,465.19	-4,594.10	1,423,469.63	3,207,911.93	40.4934120	-104.7524700
- plan hits target center									
- Point									

Casing Points					
Measured Depth	Vertical Depth	Name		Casing Diameter	Hole Diameter
(ft)	(ft)			(in)	(in)
1,821.52	1,750.00	9 5/8"		9.625	13.500

Plan Annotations					
Measured Depth	Vertical Depth	Local Coordinates		Comment	
(ft)	(ft)	+N/-S (ft)	+E/-W (ft)		
200.00	200.00	0.00	0.00	Start Build 2.00	
1,404.90	1,369.69	-219.79	118.44	Start 5523.01 hold at 1404.90 MD	
6,927.91	6,411.36	-2,204.92	1,188.22	Start DLS 9.00 TFO 116.52	
8,047.82	7,120.00	-2,479.37	567.85	LP(800' FNL & 300' FWL)	
13,209.97	7,162.00	-2,465.19	-4,594.10	TD at 13209.97	