



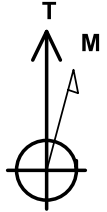
**Project: SEC 12-13 T6N R66W**  
**Site: Falken 9-11 PAD**  
**Well: Falken 4N-14A-S**  
**Wellbore: OH**  
**Design: Plan #1**

SECTION DETAILS										Target
MD	Inc	Azi	TVD	+N/-S	+E/-W	Dleg	TFace	VSect		
0.00	0.00	0.00	0.00	0.00	0.00	0.00	0.00	0.00		
300.00	0.00	0.00	300.00	0.00	0.00	0.00	0.00	0.00		
1479.95	23.60	149.40	1446.87	-206.22	121.96	2.00	149.40	-122.78		
6712.03	23.60	149.40	6241.39	-2009.11	1188.18	0.00	0.00	-1196.24		
7842.10	89.86	270.23	6960.00	-2275.39	565.52	9.00	118.73	-574.65		
13002.01	89.86	270.23	6973.00	-2254.25	-4594.34	0.00	0.00	4585.25	PBHL_Falken 4N-14A-S	

PROJECT DETAILS: SEC 12-13 T6N R66W									
Geodetic System: US State Plane 1983									
Datum: North American Datum 1983									
Ellipsoid: GRS 1980									
Zone: Colorado Northern Zone									
Colorado Northern Zone									
System Datum: Mean Sea Level									

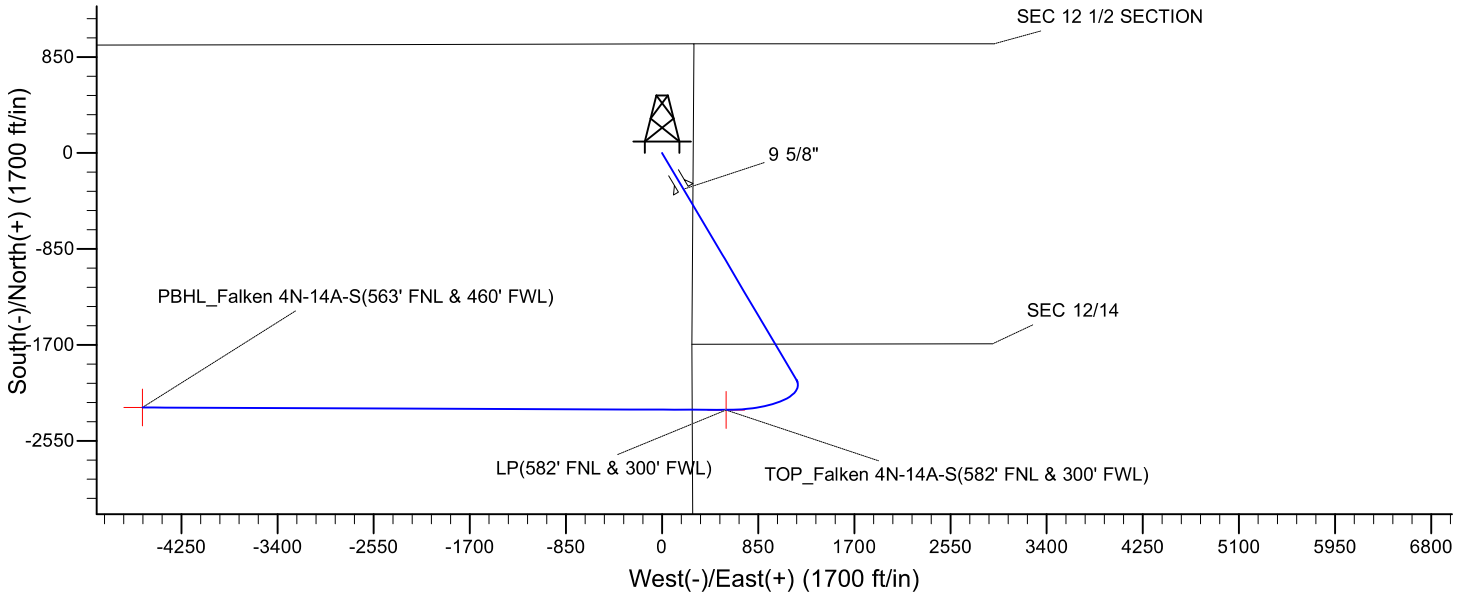
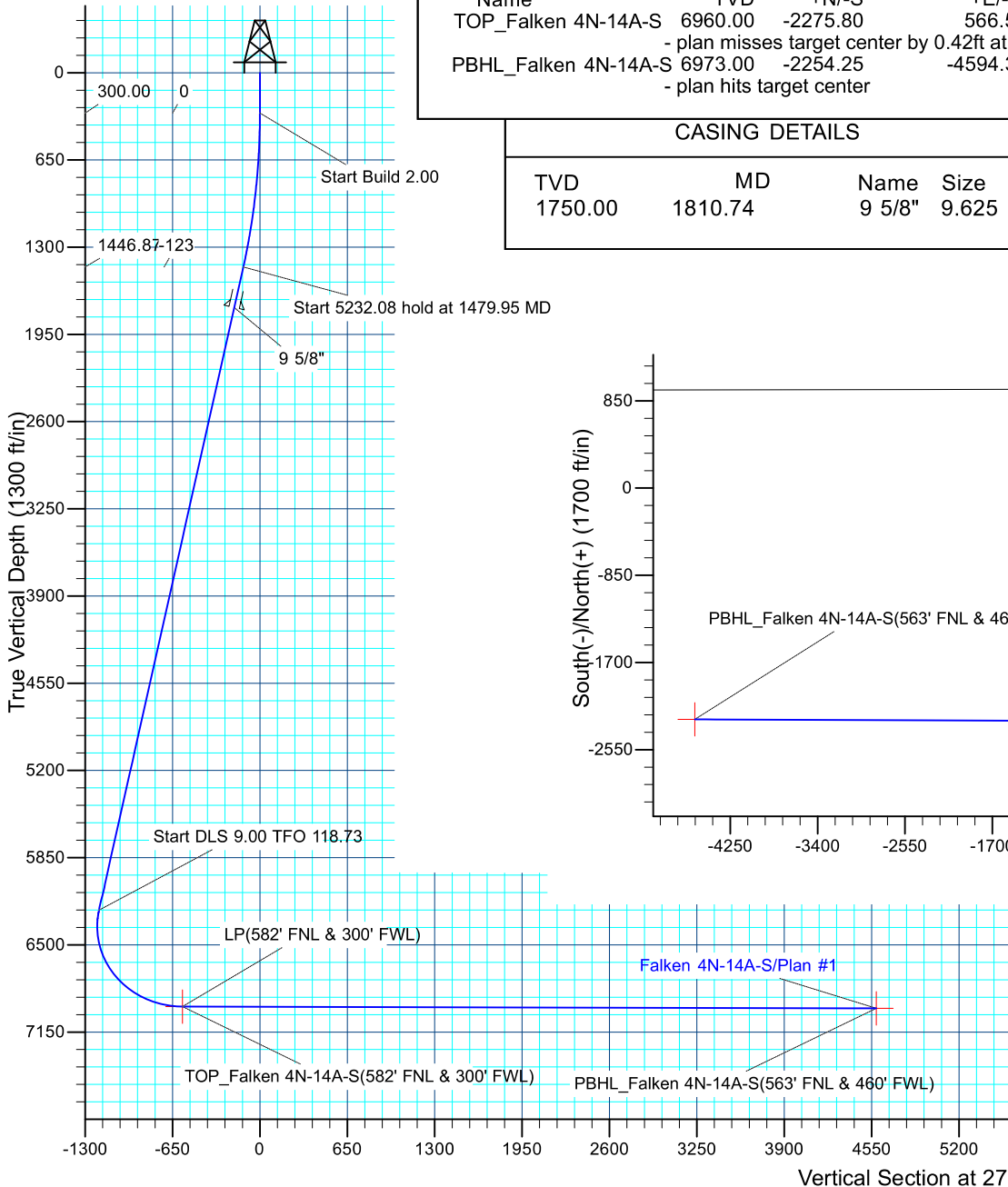
DESIGN TARGET DETAILS									
Name	TVD	+N/-S	+E/-W	Northing	Easting	Latitude	Longitude	Shape	
TOP_Falken 4N-14A-S	6960.00	-2275.80	566.54	1423718.41	3213070.62	40.4939740	-104.7339150	Point	
- plan misses target center by 0.42ft at 7841.07ft MD (6960.00 TVD, -2275.39 N, 566.54 E)									
PBHL_Falken 4N-14A-S	6973.00	-2254.25	-4594.34	1423695.49	3207909.74	40.4940320	-104.7524710	Point	
- plan hits target center									

CASING DETAILS			
TVD	MD	Name	Size
1750.00	1810.74	9 5/8"	9.625

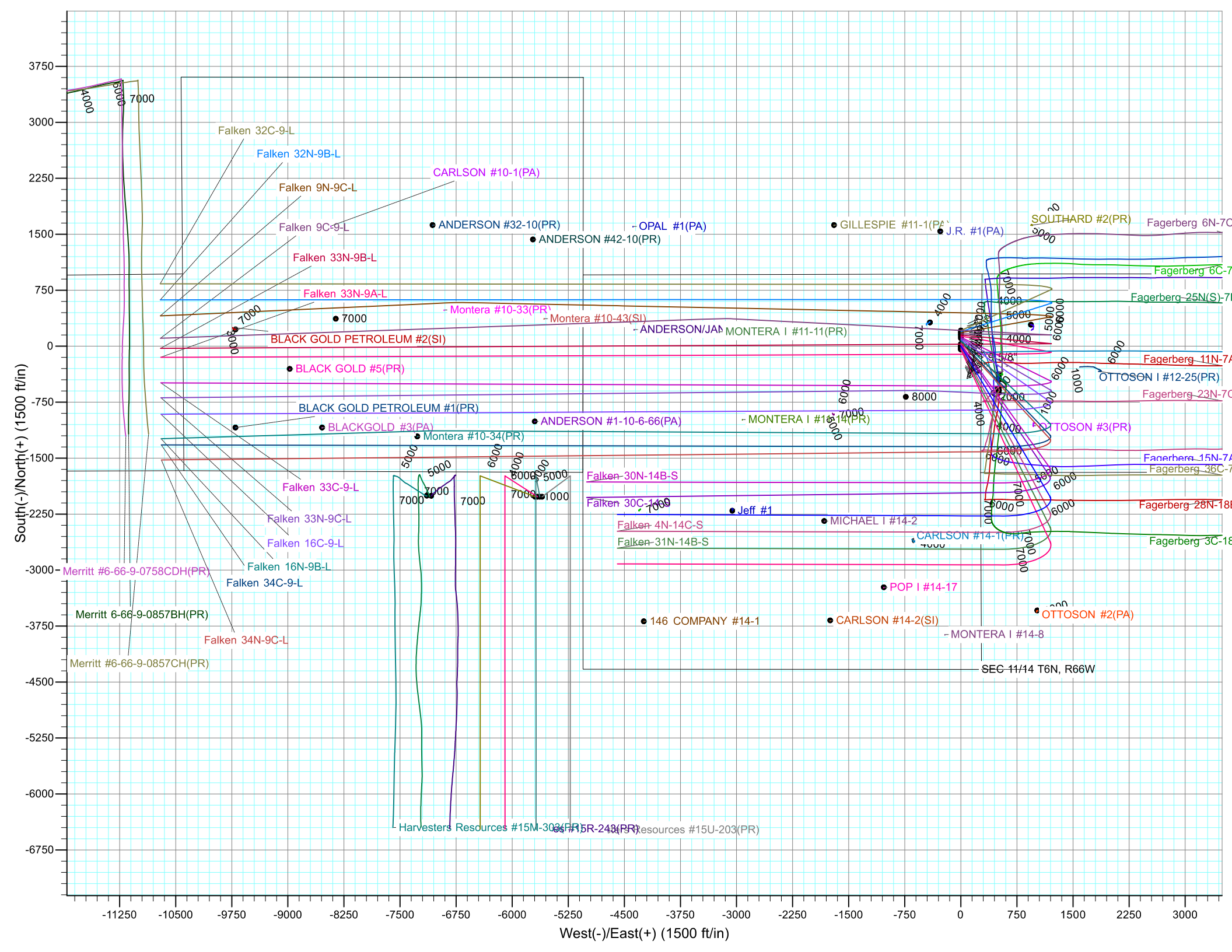


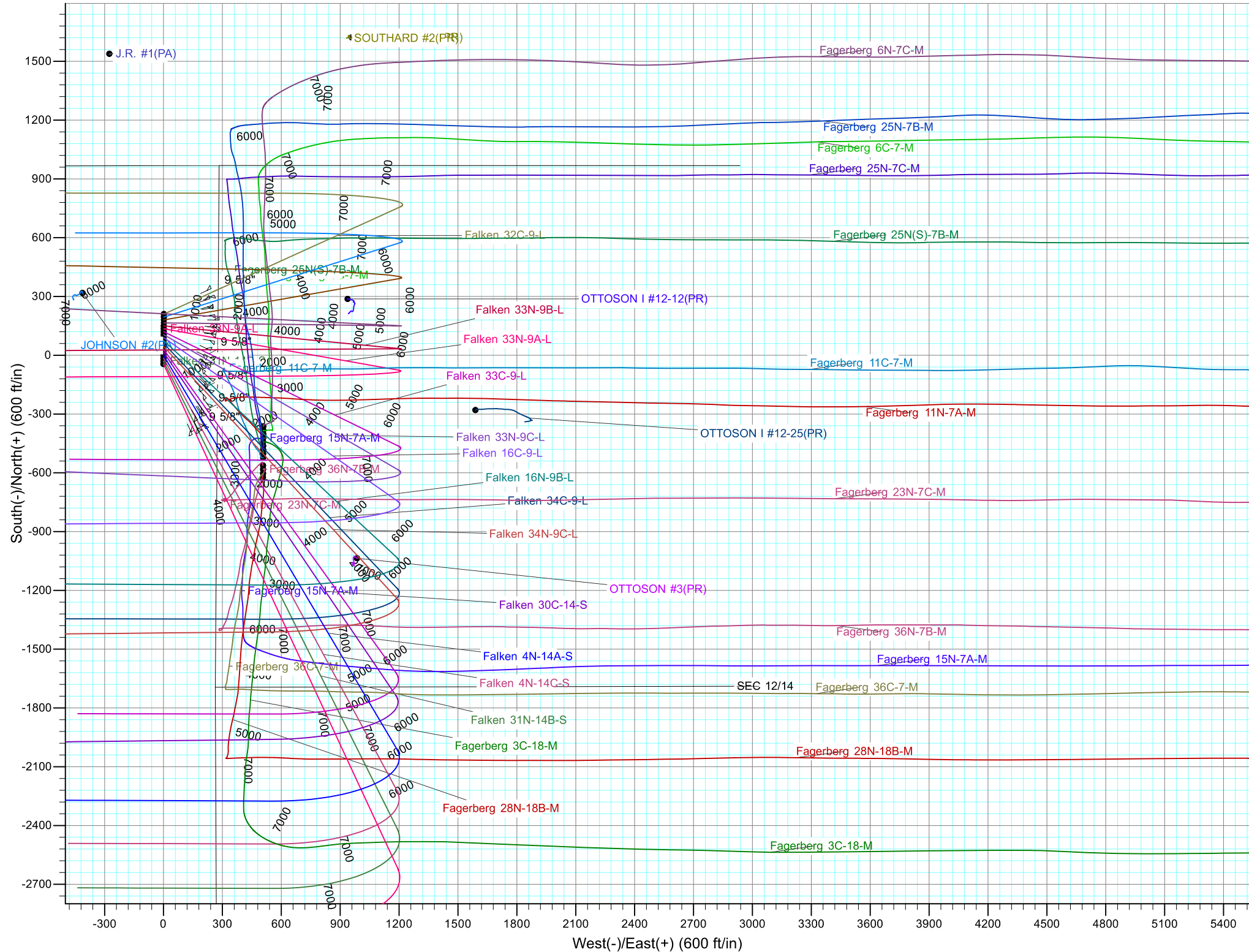
Azimuths to True North  
Magnetic North: 8.22°

Magnetic Field  
Strength: 52465.2snT  
Dip Angle: 66.94°  
Date: 4/21/2017  
Model: IGRF2015



Falken 4N-14A-S/Plan #1







# **Synergy Resources Corporation**

**SEC 12-13 T6N R66W**

**Falken 9-11 PAD**

**Falken 4N-14A-S**

**OH**

**Plan: Plan #1**

## **Standard Planning Report**

**25 April, 2017**



<b>Database:</b>	EDM 5000.14 Single User Db	<b>Local Co-ordinate Reference:</b>	Well Falken 4N-14A-S
<b>Company:</b>	Synergy Resources Corporation	<b>TVD Reference:</b>	GL 4810 & KB 20 @ 4830.00ft (Original Well Elev)
<b>Project:</b>	SEC 12-13 T6N R66W	<b>MD Reference:</b>	GL 4810 & KB 20 @ 4830.00ft (Original Well Elev)
<b>Site:</b>	Falken 9-11 PAD	<b>North Reference:</b>	True
<b>Well:</b>	Falken 4N-14A-S	<b>Survey Calculation Method:</b>	Minimum Curvature
<b>Wellbore:</b>	OH		
<b>Design:</b>	Plan #1		

<b>Project</b>	SEC 12-13 T6N R66W		
<b>Map System:</b>	US State Plane 1983	<b>System Datum:</b>	Mean Sea Level
<b>Geo Datum:</b>	North American Datum 1983		
<b>Map Zone:</b>	Colorado Northern Zone		

Site		Falken 9-11 PAD			
Site Position:		Northing:	1,426,199.10 ft	Latitude:	40.5007970
From:	Lat/Long	Easting:	3,212,484.63 ft	Longitude:	-104.7359450
Position Uncertainty:	3.28 ft	Slot Radius:	13.200 in	Grid Convergence:	0.49 °

Well	Falken 4N-14A-S, 1694' FSL & 276' FEL					
Well Position	+N/-S	-209.85 ft	Northing:	1,425,989.25 ft	Latitude:	40.5002210
	+E/-W	-1.95 ft	Easting:	3,212,484.49 ft	Longitude:	-104.7359520
Position Uncertainty		3.28 ft	Wellhead Elevation:		Ground Level:	4,810.00 ft

<b>Wellbore</b>	OH				
<b>Magnetics</b>	<b>Model Name</b>	<b>Sample Date</b>	<b>Declination (°)</b>	<b>Dip Angle (°)</b>	<b>Field Strength (nT)</b>
	IGRF2015	4/21/2017	8.22	66.94	52,465

Design	Plan #1			
Audit Notes:				
Version:	Phase:	PLAN	Tie On Depth:	0.00
Vertical Section:	Depth From (TVD) (ft)	+N/-S (ft)	+E/-W (ft)	Direction (°)
	0.00	0.00	0.00	270.23

<b>Plan Survey Tool Program</b>	<b>Date</b>	4/25/2017			
<b>Depth From (ft)</b>	<b>Depth To (ft)</b>	<b>Survey (Wellbore)</b>	<b>Tool Name</b>	<b>Remarks</b>	
1	0.00	13,001.50 Plan #1 (OH)	MWD+IFR1		
			OWSG MWD + IFR1		

<b>Plan Sections</b>										
<b>Measured Depth (ft)</b>	<b>Inclination (°)</b>	<b>Azimuth (°)</b>	<b>Vertical Depth (ft)</b>	<b>+N/-S (ft)</b>	<b>+E/-W (ft)</b>	<b>Dogleg Rate (°/100ft)</b>	<b>Build Rate (°/100ft)</b>	<b>Turn Rate (°/100ft)</b>	<b>TFO (°)</b>	<b>Target</b>
0.00	0.00	0.00	0.00	0.00	0.00	0.00	0.00	0.00	0.00	
300.00	0.00	0.00	300.00	0.00	0.00	0.00	0.00	0.00	0.00	
1,479.95	23.60	149.40	1,446.87	-206.22	121.96	2.00	2.00	0.00	149.40	
6,712.03	23.60	149.40	6,241.39	-2,009.11	1,188.18	0.00	0.00	0.00	0.00	
7,842.10	89.86	270.23	6,960.00	-2,275.39	565.52	9.00	5.86	10.69	118.73	
13,002.01	89.86	270.23	6,973.00	-2,254.25	-4,594.34	0.00	0.00	0.00	0.00	PBHL_Falken 4N-14A

<b>Database:</b>	EDM 5000.14 Single User Db	<b>Local Co-ordinate Reference:</b>	Well Falken 4N-14A-S
<b>Company:</b>	Synergy Resources Corporation	<b>TVD Reference:</b>	GL 4810 & KB 20 @ 4830.00ft (Original Well Elev)
<b>Project:</b>	SEC 12-13 T6N R66W	<b>MD Reference:</b>	GL 4810 & KB 20 @ 4830.00ft (Original Well Elev)
<b>Site:</b>	Falken 9-11 PAD	<b>North Reference:</b>	True
<b>Well:</b>	Falken 4N-14A-S	<b>Survey Calculation Method:</b>	Minimum Curvature
<b>Wellbore:</b>	OH		
<b>Design:</b>	Plan #1		

**Planned Survey**

Measured Depth (ft)	Inclination (°)	Azimuth (°)	Vertical Depth (ft)	+N/-S (ft)	+E/-W (ft)	Vertical Section (ft)	Dogleg Rate (°/100ft)	Build Rate (°/100ft)	Turn Rate (°/100ft)
0.00	0.00	0.00	0.00	0.00	0.00	0.00	0.00	0.00	0.00
100.00	0.00	0.00	100.00	0.00	0.00	0.00	0.00	0.00	0.00
200.00	0.00	0.00	200.00	0.00	0.00	0.00	0.00	0.00	0.00
300.00	0.00	0.00	300.00	0.00	0.00	0.00	0.00	0.00	0.00
<b>Start Build 2.00</b>									
400.00	2.00	149.40	399.98	-1.50	0.89	-0.89	2.00	2.00	0.00
500.00	4.00	149.40	499.84	-6.01	3.55	-3.58	2.00	2.00	0.00
600.00	6.00	149.40	599.45	-13.51	7.99	-8.04	2.00	2.00	0.00
700.00	8.00	149.40	698.70	-24.00	14.19	-14.29	2.00	2.00	0.00
800.00	10.00	149.40	797.47	-37.46	22.15	-22.30	2.00	2.00	0.00
900.00	12.00	149.40	895.62	-53.88	31.87	-32.08	2.00	2.00	0.00
1,000.00	14.00	149.40	993.06	-73.25	43.32	-43.61	2.00	2.00	0.00
1,100.00	16.00	149.40	1,089.64	-95.52	56.49	-56.87	2.00	2.00	0.00
1,200.00	18.00	149.40	1,185.27	-120.69	71.37	-71.86	2.00	2.00	0.00
1,300.00	20.00	149.40	1,279.82	-148.71	87.95	-88.54	2.00	2.00	0.00
1,400.00	22.00	149.40	1,373.17	-179.55	106.19	-106.91	2.00	2.00	0.00
1,479.95	23.60	149.40	1,446.87	-206.22	121.96	-122.78	2.00	2.00	0.00
<b>Start 5232.08 hold at 1479.95 MD</b>									
1,500.00	23.60	149.40	1,465.24	-213.13	126.04	-126.90	0.00	0.00	0.00
1,600.00	23.60	149.40	1,556.88	-247.59	146.42	-147.41	0.00	0.00	0.00
1,700.00	23.60	149.40	1,648.52	-282.04	166.80	-167.93	0.00	0.00	0.00
1,800.00	23.60	149.40	1,740.15	-316.50	187.18	-188.45	0.00	0.00	0.00
1,810.74	23.60	149.40	1,750.00	-320.21	189.37	-190.65	0.00	0.00	0.00
<b>9 5/8"</b>									
1,900.00	23.60	149.40	1,831.79	-350.96	207.56	-208.97	0.00	0.00	0.00
2,000.00	23.60	149.40	1,923.43	-385.42	227.94	-229.48	0.00	0.00	0.00
2,100.00	23.60	149.40	2,015.06	-419.88	248.32	-250.00	0.00	0.00	0.00
2,200.00	23.60	149.40	2,106.70	-454.34	268.69	-270.52	0.00	0.00	0.00
2,300.00	23.60	149.40	2,198.34	-488.79	289.07	-291.03	0.00	0.00	0.00
2,400.00	23.60	149.40	2,289.98	-523.25	309.45	-311.55	0.00	0.00	0.00
2,500.00	23.60	149.40	2,381.61	-557.71	329.83	-332.07	0.00	0.00	0.00
2,600.00	23.60	149.40	2,473.25	-592.17	350.21	-352.58	0.00	0.00	0.00
2,700.00	23.60	149.40	2,564.89	-626.63	370.59	-373.10	0.00	0.00	0.00
2,800.00	23.60	149.40	2,656.52	-661.09	390.97	-393.62	0.00	0.00	0.00
2,900.00	23.60	149.40	2,748.16	-695.55	411.34	-414.13	0.00	0.00	0.00
3,000.00	23.60	149.40	2,839.80	-730.00	431.72	-434.65	0.00	0.00	0.00
3,100.00	23.60	149.40	2,931.43	-764.46	452.10	-455.17	0.00	0.00	0.00
3,200.00	23.60	149.40	3,023.07	-798.92	472.48	-475.68	0.00	0.00	0.00
3,300.00	23.60	149.40	3,114.71	-833.38	492.86	-496.20	0.00	0.00	0.00
3,400.00	23.60	149.40	3,206.35	-867.84	513.24	-516.72	0.00	0.00	0.00
3,500.00	23.60	149.40	3,297.98	-902.30	533.62	-537.23	0.00	0.00	0.00
3,600.00	23.60	149.40	3,389.62	-936.75	553.99	-557.75	0.00	0.00	0.00
3,700.00	23.60	149.40	3,481.26	-971.21	574.37	-578.27	0.00	0.00	0.00
3,800.00	23.60	149.40	3,572.89	-1,005.67	594.75	-598.78	0.00	0.00	0.00
3,900.00	23.60	149.40	3,664.53	-1,040.13	615.13	-619.30	0.00	0.00	0.00
4,000.00	23.60	149.40	3,756.17	-1,074.59	635.51	-639.82	0.00	0.00	0.00
4,100.00	23.60	149.40	3,847.80	-1,109.05	655.89	-660.33	0.00	0.00	0.00
4,200.00	23.60	149.40	3,939.44	-1,143.50	676.27	-680.85	0.00	0.00	0.00
4,300.00	23.60	149.40	4,031.08	-1,177.96	696.64	-701.37	0.00	0.00	0.00
4,400.00	23.60	149.40	4,122.72	-1,212.42	717.02	-721.88	0.00	0.00	0.00
4,500.00	23.60	149.40	4,214.35	-1,246.88	737.40	-742.40	0.00	0.00	0.00
4,600.00	23.60	149.40	4,305.99	-1,281.34	757.78	-762.92	0.00	0.00	0.00

<b>Database:</b>	EDM 5000.14 Single User Db	<b>Local Co-ordinate Reference:</b>	Well Falken 4N-14A-S
<b>Company:</b>	Synergy Resources Corporation	<b>TVD Reference:</b>	GL 4810 & KB 20 @ 4830.00ft (Original Well Elev)
<b>Project:</b>	SEC 12-13 T6N R66W	<b>MD Reference:</b>	GL 4810 & KB 20 @ 4830.00ft (Original Well Elev)
<b>Site:</b>	Falken 9-11 PAD	<b>North Reference:</b>	True
<b>Well:</b>	Falken 4N-14A-S	<b>Survey Calculation Method:</b>	Minimum Curvature
<b>Wellbore:</b>	OH		
<b>Design:</b>	Plan #1		

Planned Survey									
Measured Depth (ft)	Inclination (°)	Azimuth (°)	Vertical Depth (ft)	+N/-S (ft)	+E/-W (ft)	Vertical Section (ft)	Dogleg Rate (°/100ft)	Build Rate (°/100ft)	Turn Rate (°/100ft)
4,700.00	23.60	149.40	4,397.63	-1,315.80	778.16	-783.43	0.00	0.00	0.00
4,800.00	23.60	149.40	4,489.26	-1,350.25	798.54	-803.95	0.00	0.00	0.00
4,900.00	23.60	149.40	4,580.90	-1,384.71	818.92	-824.47	0.00	0.00	0.00
5,000.00	23.60	149.40	4,672.54	-1,419.17	839.29	-844.99	0.00	0.00	0.00
5,100.00	23.60	149.40	4,764.17	-1,453.63	859.67	-865.50	0.00	0.00	0.00
5,200.00	23.60	149.40	4,855.81	-1,488.09	880.05	-886.02	0.00	0.00	0.00
5,300.00	23.60	149.40	4,947.45	-1,522.55	900.43	-906.54	0.00	0.00	0.00
5,400.00	23.60	149.40	5,039.08	-1,557.00	920.81	-927.05	0.00	0.00	0.00
5,500.00	23.60	149.40	5,130.72	-1,591.46	941.19	-947.57	0.00	0.00	0.00
5,600.00	23.60	149.40	5,222.36	-1,625.92	961.57	-968.09	0.00	0.00	0.00
5,700.00	23.60	149.40	5,314.00	-1,660.38	981.95	-988.60	0.00	0.00	0.00
5,800.00	23.60	149.40	5,405.63	-1,694.84	1,002.32	-1,009.12	0.00	0.00	0.00
5,900.00	23.60	149.40	5,497.27	-1,729.30	1,022.70	-1,029.64	0.00	0.00	0.00
6,000.00	23.60	149.40	5,588.91	-1,763.75	1,043.08	-1,050.15	0.00	0.00	0.00
6,100.00	23.60	149.40	5,680.54	-1,798.21	1,063.46	-1,070.67	0.00	0.00	0.00
6,200.00	23.60	149.40	5,772.18	-1,832.67	1,083.84	-1,091.19	0.00	0.00	0.00
6,300.00	23.60	149.40	5,863.82	-1,867.13	1,104.22	-1,111.70	0.00	0.00	0.00
6,400.00	23.60	149.40	5,955.45	-1,901.59	1,124.60	-1,132.22	0.00	0.00	0.00
6,500.00	23.60	149.40	6,047.09	-1,936.05	1,144.97	-1,152.74	0.00	0.00	0.00
6,600.00	23.60	149.40	6,138.73	-1,970.50	1,165.35	-1,173.25	0.00	0.00	0.00
6,700.00	23.60	149.40	6,230.37	-2,004.96	1,185.73	-1,193.77	0.00	0.00	0.00
6,712.03	23.60	149.40	6,241.39	-2,009.11	1,188.18	-1,196.24	0.00	0.00	0.00
<b>Start DLS 9.00 TFO 118.73</b>									
6,800.00	20.91	169.18	6,322.91	-2,039.73	1,200.11	-1,208.29	9.00	-3.06	22.49
6,900.00	21.14	194.44	6,416.45	-2,074.79	1,198.96	-1,207.28	9.00	0.23	25.26
7,000.00	24.73	215.79	6,508.69	-2,109.29	1,182.20	-1,190.66	9.00	3.59	21.35
7,100.00	30.51	230.78	6,597.37	-2,142.38	1,150.24	-1,158.83	9.00	5.78	14.99
7,200.00	37.48	241.02	6,680.29	-2,173.23	1,103.87	-1,112.59	9.00	6.97	10.24
7,300.00	45.08	248.34	6,755.43	-2,201.10	1,044.23	-1,053.06	9.00	7.61	7.32
7,400.00	53.05	253.91	6,820.93	-2,225.30	972.78	-981.71	9.00	7.96	5.57
7,500.00	61.22	258.40	6,875.17	-2,245.22	891.30	-900.30	9.00	8.17	4.50
7,600.00	69.52	262.24	6,916.82	-2,260.39	801.77	-810.84	9.00	8.30	3.83
7,700.00	77.89	265.68	6,944.86	-2,270.42	706.42	-715.53	9.00	8.37	3.44
7,800.00	86.31	268.90	6,958.59	-2,275.07	607.58	-616.71	9.00	8.41	3.23
7,841.07	89.77	270.20	6,960.00	-2,275.39	566.54	-575.67	9.00	8.43	3.16
<b>TOP_Falken 4N-14A-S(582' FNL &amp; 300' FWL)</b>									
7,842.10	89.86	270.23	6,960.00	-2,275.39	565.52	-574.65	9.00	8.43	3.16
<b>LP(582' FNL &amp; 300' FWL)</b>									
7,900.00	89.86	270.23	6,960.15	-2,275.15	507.61	-516.74	0.00	0.00	0.00
8,000.00	89.86	270.23	6,960.40	-2,274.74	407.61	-416.74	0.00	0.00	0.00
8,100.00	89.86	270.23	6,960.65	-2,274.33	307.61	-316.74	0.00	0.00	0.00
8,200.00	89.86	270.23	6,960.91	-2,273.92	207.62	-216.74	0.00	0.00	0.00
8,300.00	89.86	270.23	6,961.16	-2,273.51	107.62	-116.74	0.00	0.00	0.00
8,400.00	89.86	270.23	6,961.41	-2,273.10	7.62	-16.74	0.00	0.00	0.00
8,500.00	89.86	270.23	6,961.66	-2,272.69	-92.38	83.26	0.00	0.00	0.00
8,600.00	89.86	270.23	6,961.91	-2,272.28	-192.38	183.26	0.00	0.00	0.00
8,700.00	89.86	270.23	6,962.16	-2,271.87	-292.38	283.26	0.00	0.00	0.00
8,800.00	89.86	270.23	6,962.42	-2,271.46	-392.38	383.26	0.00	0.00	0.00
8,900.00	89.86	270.23	6,962.67	-2,271.05	-492.38	483.26	0.00	0.00	0.00
9,000.00	89.86	270.23	6,962.92	-2,270.64	-592.38	583.26	0.00	0.00	0.00
9,100.00	89.86	270.23	6,963.17	-2,270.23	-692.37	683.26	0.00	0.00	0.00



<b>Database:</b>	EDM 5000.14 Single User Db	<b>Local Co-ordinate Reference:</b>	Well Falken 4N-14A-S
<b>Company:</b>	Synergy Resources Corporation	<b>TVD Reference:</b>	GL 4810 & KB 20 @ 4830.00ft (Original Well Elev)
<b>Project:</b>	SEC 12-13 T6N R66W	<b>MD Reference:</b>	GL 4810 & KB 20 @ 4830.00ft (Original Well Elev)
<b>Site:</b>	Falken 9-11 PAD	<b>North Reference:</b>	True
<b>Well:</b>	Falken 4N-14A-S	<b>Survey Calculation Method:</b>	Minimum Curvature
<b>Wellbore:</b>	OH		
<b>Design:</b>	Plan #1		

Planned Survey										
Measured Depth (ft)	Inclination (°)	Azimuth (°)	Vertical Depth (ft)	+N/-S (ft)	+E/-W (ft)	Vertical Section (ft)	Dogleg Rate (°/100ft)	Build Rate (°/100ft)	Turn Rate (°/100ft)	
9,200.00	89.86	270.23	6,963.42	-2,269.82	-792.37	783.26	0.00	0.00	0.00	
9,300.00	89.86	270.23	6,963.68	-2,269.41	-892.37	883.25	0.00	0.00	0.00	
9,400.00	89.86	270.23	6,963.93	-2,269.00	-992.37	983.25	0.00	0.00	0.00	
9,500.00	89.86	270.23	6,964.18	-2,268.60	-1,092.37	1,083.25	0.00	0.00	0.00	
9,600.00	89.86	270.23	6,964.43	-2,268.19	-1,192.37	1,183.25	0.00	0.00	0.00	
9,700.00	89.86	270.23	6,964.68	-2,267.78	-1,292.37	1,283.25	0.00	0.00	0.00	
9,800.00	89.86	270.23	6,964.94	-2,267.37	-1,392.37	1,383.25	0.00	0.00	0.00	
9,900.00	89.86	270.23	6,965.19	-2,266.96	-1,492.36	1,483.25	0.00	0.00	0.00	
10,000.00	89.86	270.23	6,965.44	-2,266.55	-1,592.36	1,583.25	0.00	0.00	0.00	
10,100.00	89.86	270.23	6,965.69	-2,266.14	-1,692.36	1,683.25	0.00	0.00	0.00	
10,200.00	89.86	270.23	6,965.94	-2,265.73	-1,792.36	1,783.25	0.00	0.00	0.00	
10,300.00	89.86	270.23	6,966.19	-2,265.32	-1,892.36	1,883.25	0.00	0.00	0.00	
10,400.00	89.86	270.23	6,966.45	-2,264.91	-1,992.36	1,983.25	0.00	0.00	0.00	
10,500.00	89.86	270.23	6,966.70	-2,264.50	-2,092.36	2,083.25	0.00	0.00	0.00	
10,600.00	89.86	270.23	6,966.95	-2,264.09	-2,192.36	2,183.25	0.00	0.00	0.00	
10,700.00	89.86	270.23	6,967.20	-2,263.68	-2,292.36	2,283.25	0.00	0.00	0.00	
10,800.00	89.86	270.23	6,967.45	-2,263.27	-2,392.35	2,383.25	0.00	0.00	0.00	
10,900.00	89.86	270.23	6,967.71	-2,262.86	-2,492.35	2,483.25	0.00	0.00	0.00	
11,000.00	89.86	270.23	6,967.96	-2,262.45	-2,592.35	2,583.25	0.00	0.00	0.00	
11,100.00	89.86	270.23	6,968.21	-2,262.04	-2,692.35	2,683.25	0.00	0.00	0.00	
11,200.00	89.86	270.23	6,968.46	-2,261.63	-2,792.35	2,783.25	0.00	0.00	0.00	
11,300.00	89.86	270.23	6,968.71	-2,261.22	-2,892.35	2,883.25	0.00	0.00	0.00	
11,400.00	89.86	270.23	6,968.97	-2,260.81	-2,992.35	2,983.25	0.00	0.00	0.00	
11,500.00	89.86	270.23	6,969.22	-2,260.40	-3,092.35	3,083.25	0.00	0.00	0.00	
11,600.00	89.86	270.23	6,969.47	-2,259.99	-3,192.35	3,183.25	0.00	0.00	0.00	
11,700.00	89.86	270.23	6,969.72	-2,259.59	-3,292.34	3,283.25	0.00	0.00	0.00	
11,800.00	89.86	270.23	6,969.97	-2,259.18	-3,392.34	3,383.25	0.00	0.00	0.00	
11,900.00	89.86	270.23	6,970.22	-2,258.77	-3,492.34	3,483.25	0.00	0.00	0.00	
12,000.00	89.86	270.23	6,970.48	-2,258.36	-3,592.34	3,583.25	0.00	0.00	0.00	
12,100.00	89.86	270.23	6,970.73	-2,257.95	-3,692.34	3,683.25	0.00	0.00	0.00	
12,200.00	89.86	270.23	6,970.98	-2,257.54	-3,792.34	3,783.25	0.00	0.00	0.00	
12,300.00	89.86	270.23	6,971.23	-2,257.13	-3,892.34	3,883.25	0.00	0.00	0.00	
12,400.00	89.86	270.23	6,971.48	-2,256.72	-3,992.34	3,983.24	0.00	0.00	0.00	
12,500.00	89.86	270.23	6,971.74	-2,256.31	-4,092.33	4,083.24	0.00	0.00	0.00	
12,600.00	89.86	270.23	6,971.99	-2,255.90	-4,192.33	4,183.24	0.00	0.00	0.00	
12,700.00	89.86	270.23	6,972.24	-2,255.49	-4,292.33	4,283.24	0.00	0.00	0.00	
12,800.00	89.86	270.23	6,972.49	-2,255.08	-4,392.33	4,383.24	0.00	0.00	0.00	
12,900.00	89.86	270.23	6,972.74	-2,254.67	-4,492.33	4,483.24	0.00	0.00	0.00	
13,000.00	89.86	270.23	6,973.00	-2,254.26	-4,592.33	4,583.24	0.00	0.00	0.00	
13,002.01	89.86	270.23	6,973.00	-2,254.25	-4,594.34	4,585.25	0.00	0.00	0.00	
TD at 13002.01 - PBHL_Falken 4N-14A-S(563' FNL & 460' FWL)										



<b>Database:</b>	EDM 5000.14 Single User Db	<b>Local Co-ordinate Reference:</b>	Well Falken 4N-14A-S
<b>Company:</b>	Synergy Resources Corporation	<b>TVD Reference:</b>	GL 4810 & KB 20 @ 4830.00ft (Original Well Elev)
<b>Project:</b>	SEC 12-13 T6N R66W	<b>MD Reference:</b>	GL 4810 & KB 20 @ 4830.00ft (Original Well Elev)
<b>Site:</b>	Falken 9-11 PAD	<b>North Reference:</b>	True
<b>Well:</b>	Falken 4N-14A-S	<b>Survey Calculation Method:</b>	Minimum Curvature
<b>Wellbore:</b>	OH		
<b>Design:</b>	Plan #1		

Design Targets									
Target Name	Dip Angle	Dip Dir.	TVD	+N/-S	+E/-W	Northing	Easting	Latitude	Longitude
- hit/miss target	(°)	(°)	(ft)	(ft)	(ft)	(ft)	(ft)		
- Shape									
TOP_Falken 4N-14A-S(	0.00	0.00	6,960.00	-2,275.80	566.54	1,423,718.41	3,213,070.62	40.4939740	-104.7339150
- plan misses target center by 0.42ft at 7841.07ft MD (6960.00 TVD, -2275.39 N, 566.54 E)									
- Point									
PBHL_Falken 4N-14A-S	0.00	0.00	6,973.00	-2,254.25	-4,594.34	1,423,695.49	3,207,909.75	40.4940320	-104.7524710
- plan hits target center									
- Point									

Casing Points					
Measured Depth	Vertical Depth	Name		Casing Diameter	Hole Diameter
(ft)	(ft)			(in)	(in)
1,810.74	1,750.00	9 5/8"		9.625	13.500

Plan Annotations					
Measured Depth	Vertical Depth	Local Coordinates			
(ft)	(ft)	+N/-S	+E/-W	Comment	
(ft)	(ft)	(ft)	(ft)		
300.00	300.00	0.00	0.00	Start Build 2.00	
1,479.95	1,446.87	-206.22	121.96	Start 5232.08 hold at 1479.95 MD	
6,712.03	6,241.39	-2,009.11	1,188.18	Start DLS 9.00 TFO 118.73	
7,842.10	6,960.00	-2,275.39	565.52	LP(582' FNL & 300' FWL)	
13,002.01	6,973.00	-2,254.25	-4,594.34	TD at 13002.01	