

EXTRACTION OIL & GAS

WELD COUNTY, COLORADO (NAD 83)

SW SW SEC. 22 T4N R68W 6th P.M.

MLD 1

ORIGINAL WELLBORE

31 May, 2017

Plan: PROPOSAL #2





Project: WELD COUNTY, COLORADO (NAD 83)
Site: SW SW SEC. 22 T4N R68W 6th P.M.
Well: MLD 1
Wellbore: ORIGINAL WELLBORE
Design: PROPOSAL #2

ANNOTATIONS

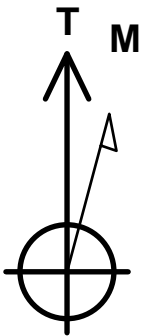
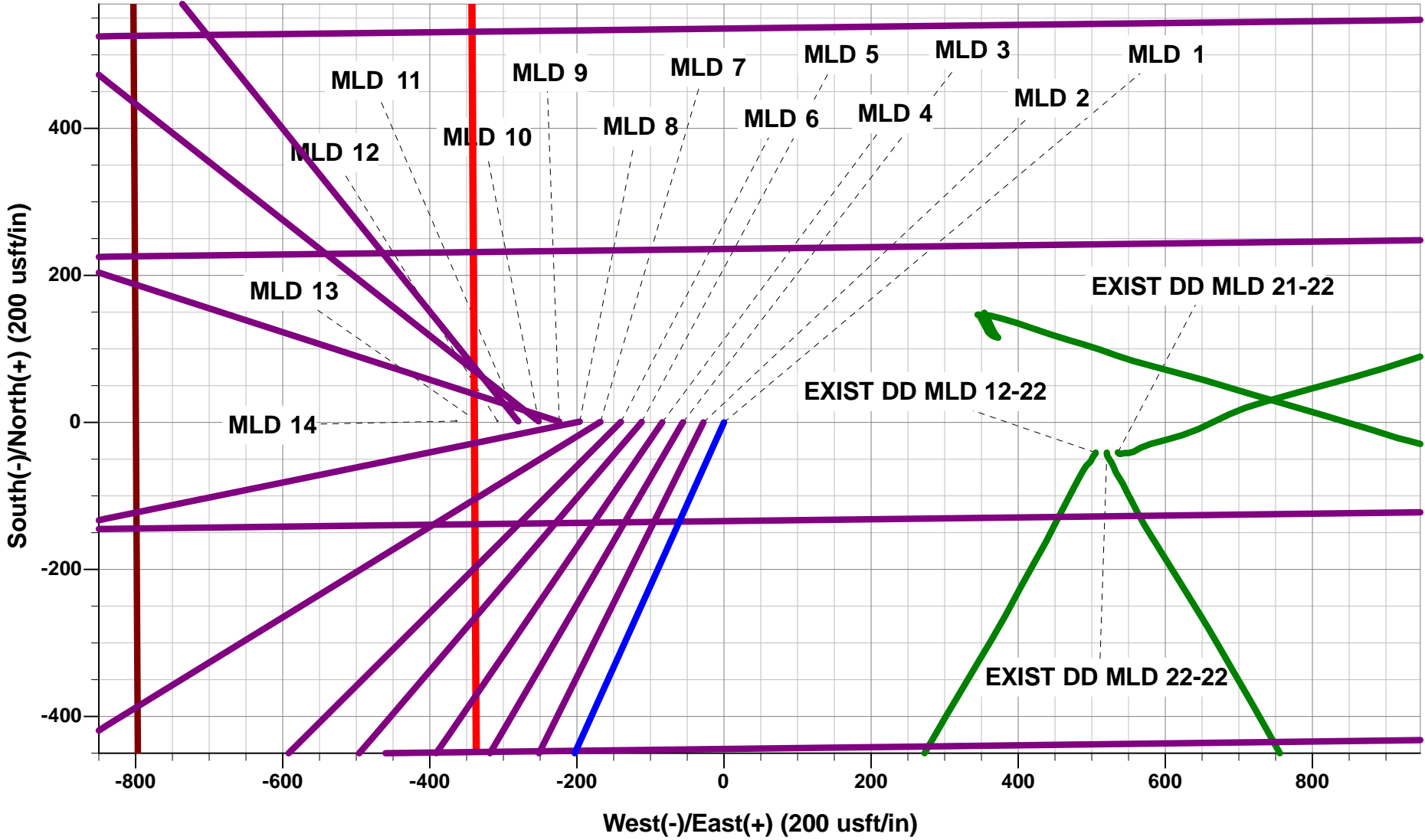
TVD	MD	Inc	Azi	+N/-S	+E/-W	VSect	Dep	Annotation
2250.0	2250.0	0.00	0.00	0.0	0.0	0.0	0.0	START NUDGE (2°/100ft BUR)
3867.7	3969.0	34.38	204.26	-456.3	-205.6	39.6	500.4	EOB TO 34.38° INC
6302.6	6919.3	34.38	204.26	-1975.1	-890.1	171.3	2166.4	START BUILD & TURN
6909.0	7960.4	90.00	88.69	-2336.6	-326.1	839.8	2945.9	HZ LP - MLD 1 (P2)
6909.0	12356.5	90.00	88.69	-2236.5	4068.9	4643.0	7342.0	BHL - MLD 1 (P2)

WELLBORE TARGET DETAILS (LAT/LONG)

Name	TVD	+N/-S	+E/-W	Latitude	Longitude
HZ LP - MLD 1 (P2)	6909.0	-2336.6	-326.1	40.297554	-104.997134
BHL - MLD 1 (P2)	6909.0	-2236.5	4068.9	40.297828	-104.981378

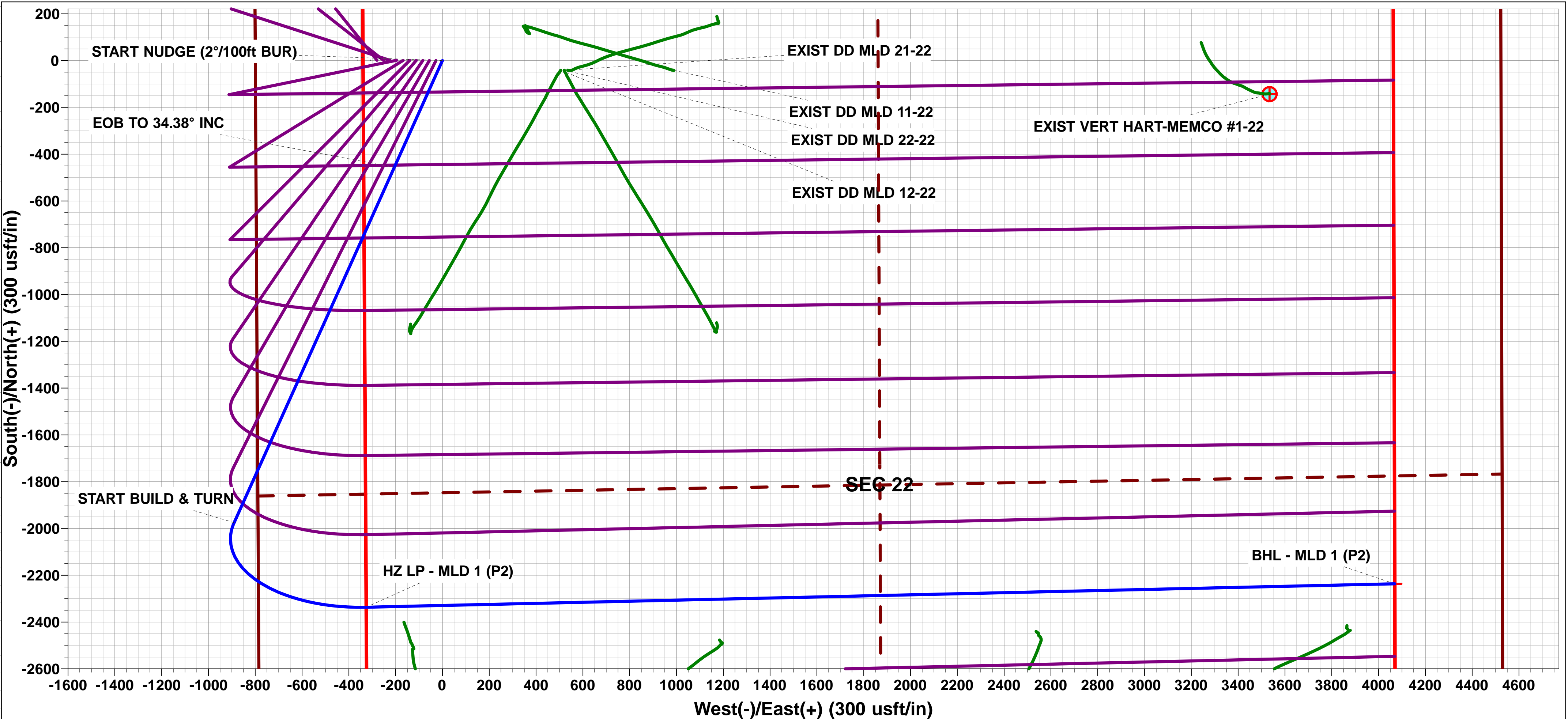
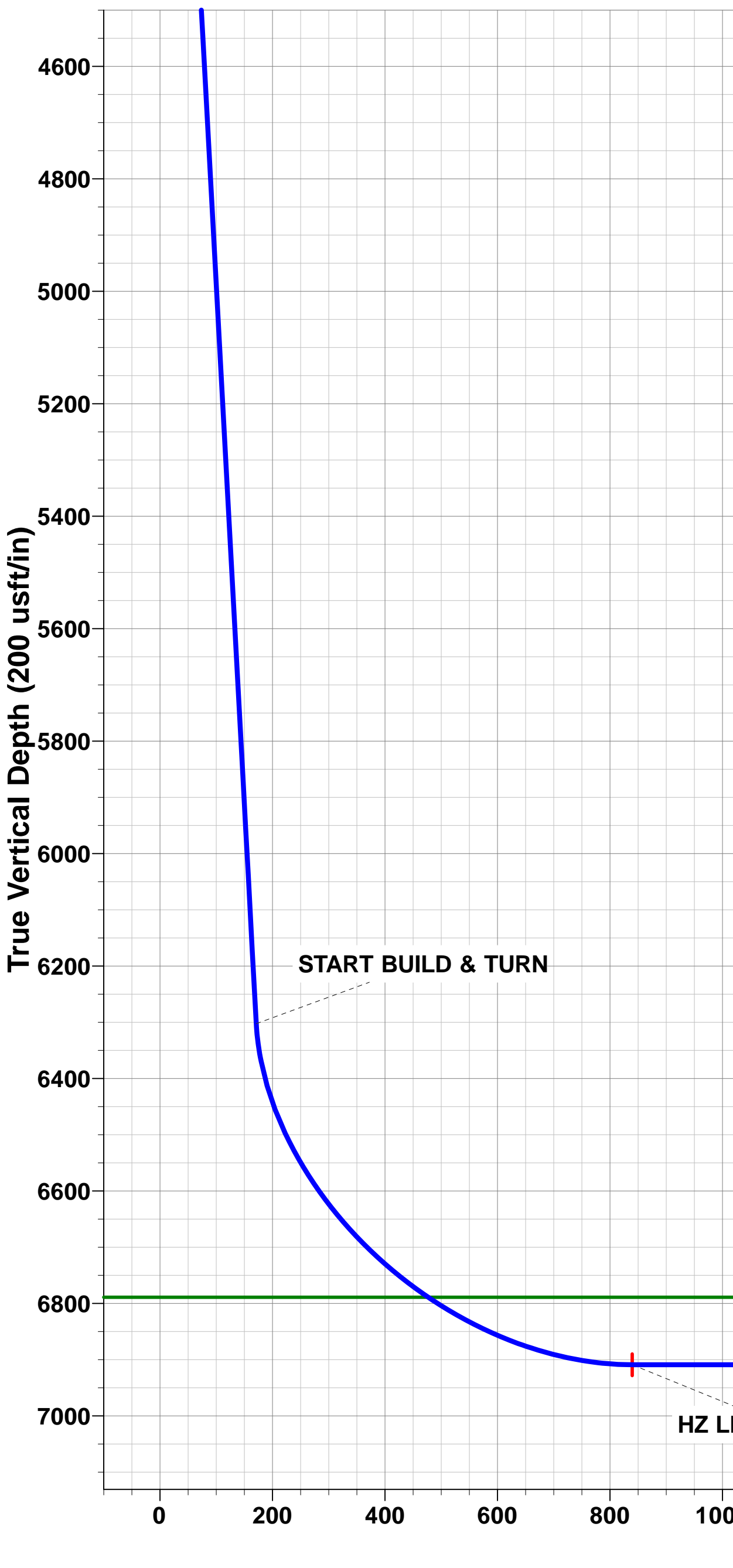
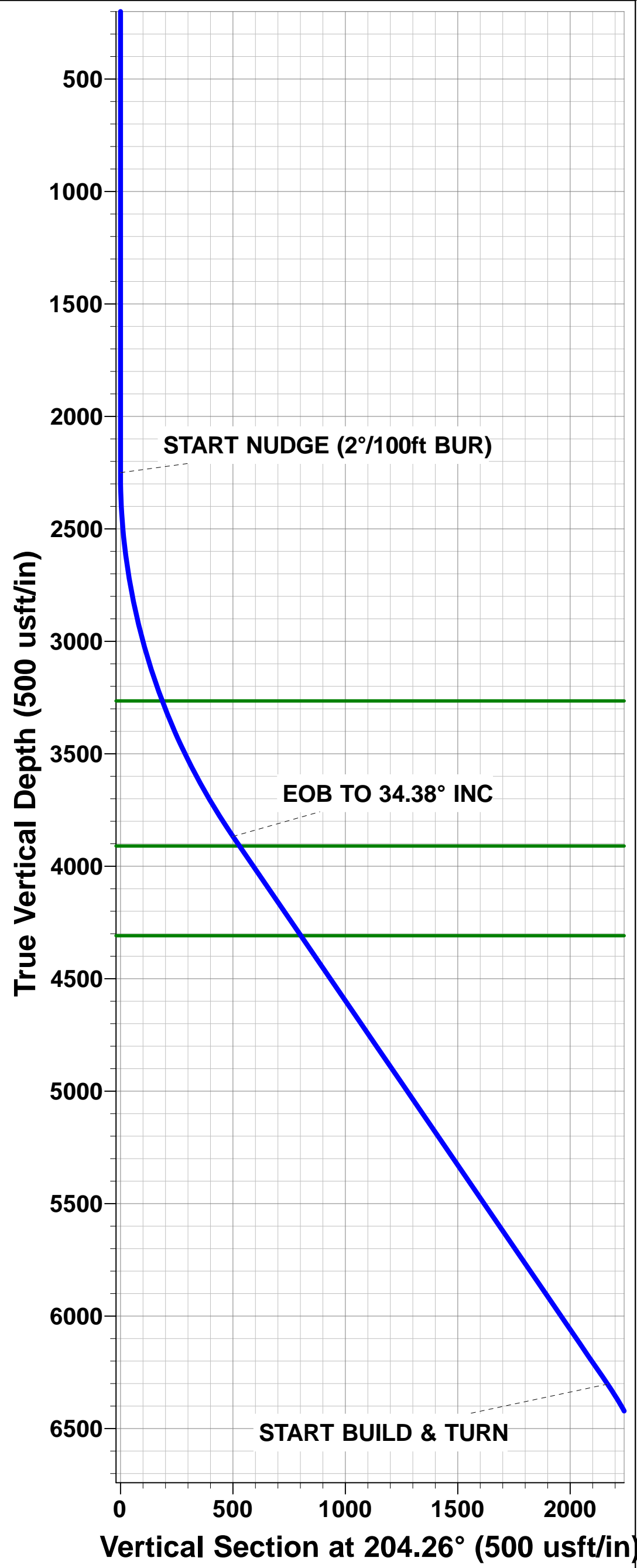
FORMATION TOP DETAILS

TVDPath	MDPath	Formation
3265.0	3287.5	PARKMAN
3910.0	4020.3	SUSSEX
4309.0	4503.7	SHANNON
6789.0	7549.7	NIobrara



Azimuths to True North
Magnetic North: 8.33°

Magnetic Field
Strength: 52322.7snT
Dip Angle: 66.74°
Date: 31/05/2017
Model: IGRF2015



SETBACK BOUNDARY FALLS 460ft FE/WL of Sec 22

Planning Report



Database:	EDM 5000.1 Single User Db	Local Co-ordinate Reference:	Well MLD 1
Company:	EXTRACTION OIL & GAS	TVD Reference:	KB-EST @ 4901.0usft (Original Well Elev)
Project:	WELD COUNTY, COLORADO (NAD 83)	MD Reference:	KB-EST @ 4901.0usft (Original Well Elev)
Site:	SW SW SEC. 22 T4N R68W 6th P.M.	North Reference:	True
Well:	MLD 1	Survey Calculation Method:	Minimum Curvature
Wellbore:	ORIGINAL WELLBORE		
Design:	PROPOSAL #2		

Project	WELD COUNTY, COLORADO (NAD 83)		
Map System:	US State Plane 1983	System Datum:	Mean Sea Level
Geo Datum:	North American Datum 1983		
Map Zone:	Colorado Northern Zone		Using geodetic scale factor

Site	SW SW SEC. 22 T4N R68W 6th P.M.		
Site Position:		Northing:	1,350,393.80 usft
From:	Lat/Long	Easting:	3,140,798.83 usft
Position Uncertainty:	0.0 usft	Slot Radius:	1.10000ft
		Latitude:	40.294131
		Longitude:	-104.995243
		Grid Convergence:	0.33 °

Well	MLD 1		
Well Position	+N-S	3,583.7 usft	Northing: 1,353,976.10 usft
	+E-W	-201.4 usft	Easting: 3,140,577.06 usft
Position Uncertainty		0.0 usft	Wellhead Elevation: usft
			Latitude: 40.303968
			Longitude: -104.995965
			Ground Level: 4,877.0 usft

Wellbore	ORIGINAL WELLBORE				
Magnetics	Model Name	Sample Date	Declination (°)	Dip Angle (°)	Field Strength (nT)
	IGRF2015	31/05/2017	8.33	66.74	52,323

Design	PROPOSAL #2			
Audit Notes:				
Version:	Phase:	PROTOTYPE	Tie On Depth:	0.0
Vertical Section:	Depth From (TVD) (usft)	+N-S (usft)	+E-W (usft)	Direction (°)
	0.0	0.0	0.0	118.80

Plan Sections											
MD (usft)	Inc (°)	Azi (°)	Vertical Depth	SS (usft)	+N-S (usft)	+E-W (usft)	Dogleg Rate (°/100usf)	Build Rate (°/100usf)	Turn Rate (°/100usf)	TFO (°)	Target
0.0	0.00	0.00	0.0	-4,901.0	0.0	0.0	0.00	0.00	0.00	0.00	
2,250.0	0.00	0.00	2,250.0	-2,651.0	0.0	0.0	0.00	0.00	0.00	0.00	
3,969.0	34.38	204.26	3,867.7	-1,033.3	-456.3	-205.6	2.00	2.00	0.00	204.26	
6,919.3	34.38	204.26	6,302.6	1,401.6	-1,975.1	-890.2	0.00	0.00	0.00	0.00	
7,960.4	90.00	88.69	6,909.0	2,008.0	-2,336.6	-326.1	10.00	5.34	-11.10	-111.54	HZ LP - MLD 1 (P2)
12,356.5	90.00	88.69	6,909.0	2,008.0	-2,236.5	4,068.9	0.00	0.00	0.00	0.00	BHL - MLD 1 (P2)

Database:	EDM 5000.1 Single User Db	Local Co-ordinate Reference:	Well MLD 1
Company:	EXTRACTION OIL & GAS	TVD Reference:	KB-EST @ 4901.0usft (Original Well Elev)
Project:	WELD COUNTY, COLORADO (NAD 83)	MD Reference:	KB-EST @ 4901.0usft (Original Well Elev)
Site:	SW SW SEC. 22 T4N R68W 6th P.M.	North Reference:	True
Well:	MLD 1	Survey Calculation Method:	Minimum Curvature
Wellbore:	ORIGINAL WELLBORE		
Design:	PROPOSAL #2		

Planned Survey

MD (usft)	Inc (°)	Azi (°)	TVD (usft)	SS (usft)	+N/-S (usft)	+E/-W (usft)	Vertical Section (usft)	Dogleg Rate (°/100usft)	Build Rate (°/100usft)	Turn Rate (°/100usft)
0.0	0.00	0.00	0.0	4,901.00	0.0	0.0	0.0	0.00	0.00	0.00
100.0	0.00	0.00	100.0	4,801.00	0.0	0.0	0.0	0.00	0.00	0.00
200.0	0.00	0.00	200.0	4,701.00	0.0	0.0	0.0	0.00	0.00	0.00
300.0	0.00	0.00	300.0	4,601.00	0.0	0.0	0.0	0.00	0.00	0.00
400.0	0.00	0.00	400.0	4,501.00	0.0	0.0	0.0	0.00	0.00	0.00
500.0	0.00	0.00	500.0	4,401.00	0.0	0.0	0.0	0.00	0.00	0.00
600.0	0.00	0.00	600.0	4,301.00	0.0	0.0	0.0	0.00	0.00	0.00
700.0	0.00	0.00	700.0	4,201.00	0.0	0.0	0.0	0.00	0.00	0.00
800.0	0.00	0.00	800.0	4,101.00	0.0	0.0	0.0	0.00	0.00	0.00
900.0	0.00	0.00	900.0	4,001.00	0.0	0.0	0.0	0.00	0.00	0.00
1,000.0	0.00	0.00	1,000.0	3,901.00	0.0	0.0	0.0	0.00	0.00	0.00
1,100.0	0.00	0.00	1,100.0	3,801.00	0.0	0.0	0.0	0.00	0.00	0.00
1,200.0	0.00	0.00	1,200.0	3,701.00	0.0	0.0	0.0	0.00	0.00	0.00
1,300.0	0.00	0.00	1,300.0	3,601.00	0.0	0.0	0.0	0.00	0.00	0.00
1,400.0	0.00	0.00	1,400.0	3,501.00	0.0	0.0	0.0	0.00	0.00	0.00
1,500.0	0.00	0.00	1,500.0	3,401.00	0.0	0.0	0.0	0.00	0.00	0.00
1,600.0	0.00	0.00	1,600.0	3,301.00	0.0	0.0	0.0	0.00	0.00	0.00
1,700.0	0.00	0.00	1,700.0	3,201.00	0.0	0.0	0.0	0.00	0.00	0.00
1,800.0	0.00	0.00	1,800.0	3,101.00	0.0	0.0	0.0	0.00	0.00	0.00
1,900.0	0.00	0.00	1,900.0	3,001.00	0.0	0.0	0.0	0.00	0.00	0.00
2,000.0	0.00	0.00	2,000.0	2,901.00	0.0	0.0	0.0	0.00	0.00	0.00
2,100.0	0.00	0.00	2,100.0	2,801.00	0.0	0.0	0.0	0.00	0.00	0.00
2,200.0	0.00	0.00	2,200.0	2,701.00	0.0	0.0	0.0	0.00	0.00	0.00
START NUDGE (2°/100ft BUR)										
2,250.0	0.00	0.00	2,250.0	2,651.00	0.0	0.0	0.0	0.00	0.00	0.00
2,300.0	1.00	204.26	2,300.0	2,601.00	-0.4	-0.2	0.0	2.00	2.00	0.00
2,400.0	3.00	204.26	2,399.9	2,501.07	-3.6	-1.6	0.3	2.00	2.00	0.00
2,500.0	5.00	204.26	2,499.7	2,401.32	-9.9	-4.5	0.9	2.00	2.00	0.00
2,600.0	7.00	204.26	2,599.1	2,301.87	-19.5	-8.8	1.7	2.00	2.00	0.00
2,700.0	9.00	204.26	2,698.2	2,202.85	-32.2	-14.5	2.8	2.00	2.00	0.00
2,800.0	11.00	204.26	2,796.6	2,104.37	-48.0	-21.6	4.2	2.00	2.00	0.00
2,900.0	13.00	204.26	2,894.4	2,006.56	-66.9	-30.2	5.8	2.00	2.00	0.00
3,000.0	15.00	204.26	2,991.5	1,909.54	-89.0	-40.1	7.7	2.00	2.00	0.00
3,100.0	17.00	204.26	3,087.6	1,813.42	-114.1	-51.4	9.9	2.00	2.00	0.00
3,200.0	19.00	204.26	3,182.7	1,718.32	-142.3	-64.1	12.3	2.00	2.00	0.00
PARKMAN										
3,287.5	20.75	204.26	3,265.0	1,636.00	-169.4	-76.4	14.7	2.00	2.00	0.00
3,300.0	21.00	204.26	3,276.6	1,624.35	-173.5	-78.2	15.0	2.00	2.00	0.00
3,400.0	23.00	204.26	3,369.4	1,531.64	-207.6	-93.6	18.0	2.00	2.00	0.00
3,500.0	25.00	204.26	3,460.7	1,440.29	-244.7	-110.3	21.2	2.00	2.00	0.00
3,600.0	27.00	204.26	3,550.6	1,350.41	-284.7	-128.3	24.7	2.00	2.00	0.00
3,700.0	29.00	204.26	3,638.9	1,262.12	-327.5	-147.6	28.4	2.00	2.00	0.00
3,800.0	31.00	204.26	3,725.5	1,175.52	-373.1	-168.1	32.4	2.00	2.00	0.00
3,900.0	33.00	204.26	3,810.3	1,090.72	-421.4	-189.9	36.5	2.00	2.00	0.00
EOB TO 34.38° INC										
3,969.0	34.38	204.26	3,867.7	1,033.31	-456.3	-205.6	39.6	2.00	2.00	0.00
4,000.0	34.38	204.26	3,893.3	1,007.73	-472.2	-212.8	41.0	0.00	0.00	0.00
SUSSEX										
4,020.3	34.38	204.26	3,910.0	991.00	-482.6	-217.5	41.9	0.00	0.00	0.00
4,100.0	34.38	204.26	3,975.8	925.20	-523.7	-236.0	45.4	0.00	0.00	0.00
4,200.0	34.38	204.26	4,058.3	842.67	-575.2	-259.2	49.9	0.00	0.00	0.00
4,300.0	34.38	204.26	4,140.9	760.14	-626.7	-282.4	54.4	0.00	0.00	0.00
4,400.0	34.38	204.26	4,223.4	677.61	-678.1	-305.6	58.8	0.00	0.00	0.00
4,500.0	34.38	204.26	4,305.9	595.08	-729.6	-328.8	63.3	0.00	0.00	0.00

Planning Report



Database:	EDM 5000.1 Single User Db	Local Co-ordinate Reference:	Well MLD 1
Company:	EXTRACTION OIL & GAS	TVD Reference:	KB-EST @ 4901.0usft (Original Well Elev)
Project:	WELD COUNTY, COLORADO (NAD 83)	MD Reference:	KB-EST @ 4901.0usft (Original Well Elev)
Site:	SW SW SEC. 22 T4N R68W 6th P.M.	North Reference:	True
Well:	MLD 1	Survey Calculation Method:	Minimum Curvature
Wellbore:	ORIGINAL WELLBORE		
Design:	PROPOSAL #2		

Planned Survey

MD (usft)	Inc (°)	Azi (°)	TVD (usft)	SS (usft)	+N/-S (usft)	+E/-W (usft)	Vertical Section (usft)	Dogleg Rate (°/100usft)	Build Rate (°/100usft)	Turn Rate (°/100usft)
SHANNON										
4,503.7	34.38	204.26	4,309.0	592.00	-731.5	-329.7	63.4	0.00	0.00	0.00
4,600.0	34.38	204.26	4,388.5	512.54	-781.1	-352.0	67.7	0.00	0.00	0.00
4,700.0	34.38	204.26	4,471.0	430.01	-832.6	-375.2	72.2	0.00	0.00	0.00
4,800.0	34.38	204.26	4,553.5	347.48	-884.1	-398.4	76.7	0.00	0.00	0.00
4,900.0	34.38	204.26	4,636.0	264.95	-935.5	-421.6	81.1	0.00	0.00	0.00
5,000.0	34.38	204.26	4,718.6	182.42	-987.0	-444.8	85.6	0.00	0.00	0.00
5,100.0	34.38	204.26	4,801.1	99.89	-1,038.5	-468.0	90.1	0.00	0.00	0.00
5,200.0	34.38	204.26	4,883.6	17.36	-1,090.0	-491.2	94.5	0.00	0.00	0.00
5,300.0	34.38	204.26	4,966.2	-65.17	-1,141.5	-514.4	99.0	0.00	0.00	0.00
5,400.0	34.38	204.26	5,048.7	-147.70	-1,193.0	-537.6	103.5	0.00	0.00	0.00
5,500.0	34.38	204.26	5,131.2	-230.23	-1,244.4	-560.8	107.9	0.00	0.00	0.00
5,600.0	34.38	204.26	5,213.8	-312.76	-1,295.9	-584.0	112.4	0.00	0.00	0.00
5,700.0	34.38	204.26	5,296.3	-395.29	-1,347.4	-607.2	116.9	0.00	0.00	0.00
5,800.0	34.38	204.26	5,378.8	-477.83	-1,398.9	-630.4	121.3	0.00	0.00	0.00
5,900.0	34.38	204.26	5,461.4	-560.36	-1,450.4	-653.6	125.8	0.00	0.00	0.00
6,000.0	34.38	204.26	5,543.9	-642.89	-1,501.8	-676.9	130.3	0.00	0.00	0.00
6,100.0	34.38	204.26	5,626.4	-725.42	-1,553.3	-700.1	134.7	0.00	0.00	0.00
6,200.0	34.38	204.26	5,708.9	-807.95	-1,604.8	-723.3	139.2	0.00	0.00	0.00
6,300.0	34.38	204.26	5,791.5	-890.48	-1,656.3	-746.5	143.7	0.00	0.00	0.00
6,400.0	34.38	204.26	5,874.0	-973.01	-1,707.8	-769.7	148.1	0.00	0.00	0.00
6,500.0	34.38	204.26	5,956.5	-1,055.54	-1,759.3	-792.9	152.6	0.00	0.00	0.00
6,600.0	34.38	204.26	6,039.1	-1,138.07	-1,810.7	-816.1	157.0	0.00	0.00	0.00
6,700.0	34.38	204.26	6,121.6	-1,220.60	-1,862.2	-839.3	161.5	0.00	0.00	0.00
6,800.0	34.38	204.26	6,204.1	-1,303.13	-1,913.7	-862.5	166.0	0.00	0.00	0.00
6,900.0	34.38	204.26	6,286.7	-1,385.66	-1,965.2	-885.7	170.4	0.00	0.00	0.00
START BUILD & TURN										
6,919.3	34.38	204.26	6,302.6	-1,401.59	-1,975.1	-890.1	171.3	0.00	0.00	0.00
7,000.0	32.19	190.08	6,370.2	-1,469.15	-2,017.1	-903.3	180.0	10.00	-2.71	-17.57
7,100.0	31.90	171.18	6,455.1	-1,554.12	-2,069.6	-903.9	204.8	10.00	-0.29	-18.90
7,200.0	34.33	153.36	6,539.1	-1,638.08	-2,121.0	-887.2	244.2	10.00	2.42	-17.82
7,300.0	38.96	138.46	6,619.5	-1,718.45	-2,169.9	-853.6	297.2	10.00	4.63	-14.91
7,400.0	45.11	126.64	6,693.8	-1,792.81	-2,214.7	-804.2	362.0	10.00	6.15	-11.82
7,500.0	52.23	117.27	6,759.9	-1,858.89	-2,254.0	-740.5	436.8	10.00	7.12	-9.37
NIOBRARA										
7,549.7	56.01	113.29	6,789.0	-1,888.00	-2,271.2	-704.1	476.9	10.00	7.61	-8.01
7,600.0	59.96	109.61	6,815.7	-1,914.69	-2,286.7	-664.4	519.3	10.00	7.85	-7.31
7,700.0	68.07	103.09	6,859.5	-1,958.51	-2,311.8	-578.2	606.9	10.00	8.11	-6.52
7,800.0	76.40	97.28	6,890.0	-1,989.02	-2,328.5	-484.6	696.9	10.00	8.34	-5.81
7,900.0	84.86	91.87	6,906.3	-2,005.30	-2,336.3	-386.4	786.8	10.00	8.46	-5.41
HZ LP - MLD 1 (P2)										
7,960.4	90.00	88.69	6,909.0	-2,008.00	-2,336.6	-326.1	839.8	10.00	8.50	-5.26
8,000.0	90.00	88.69	6,909.0	-2,008.00	-2,335.7	-286.5	874.0	0.00	0.00	0.00
8,100.0	90.00	88.69	6,909.0	-2,008.00	-2,333.5	-186.5	960.6	0.00	0.00	0.00
8,200.0	90.00	88.69	6,909.0	-2,008.00	-2,331.2	-86.5	1,047.1	0.00	0.00	0.00
8,300.0	90.00	88.69	6,909.0	-2,008.00	-2,328.9	13.4	1,133.6	0.00	0.00	0.00
8,400.0	90.00	88.69	6,909.0	-2,008.00	-2,326.6	113.4	1,220.1	0.00	0.00	0.00
8,500.0	90.00	88.69	6,909.0	-2,008.00	-2,324.3	213.4	1,306.6	0.00	0.00	0.00
8,600.0	90.00	88.69	6,909.0	-2,008.00	-2,322.1	313.4	1,393.1	0.00	0.00	0.00
8,700.0	90.00	88.69	6,909.0	-2,008.00	-2,319.8	413.3	1,479.6	0.00	0.00	0.00
8,800.0	90.00	88.69	6,909.0	-2,008.00	-2,317.5	513.3	1,566.2	0.00	0.00	0.00
8,900.0	90.00	88.69	6,909.0	-2,008.00	-2,315.2	613.3	1,652.7	0.00	0.00	0.00
9,000.0	90.00	88.69	6,909.0	-2,008.00	-2,313.0	713.3	1,739.2	0.00	0.00	0.00

Planning Report



Database:	EDM 5000.1 Single User Db	Local Co-ordinate Reference:	Well MLD 1
Company:	EXTRACTION OIL & GAS	TVD Reference:	KB-EST @ 4901.0usft (Original Well Elev)
Project:	WELD COUNTY, COLORADO (NAD 83)	MD Reference:	KB-EST @ 4901.0usft (Original Well Elev)
Site:	SW SW SEC. 22 T4N R68W 6th P.M.	North Reference:	True
Well:	MLD 1	Survey Calculation Method:	Minimum Curvature
Wellbore:	ORIGINAL WELLBORE		
Design:	PROPOSAL #2		

Planned Survey

MD (usft)	Inc (°)	Azi (°)	TVD (usft)	SS (usft)	+N/-S (usft)	+E/-W (usft)	Vertical Section (usft)	Dogleg Rate (°/100usft)	Build Rate (°/100usft)	Turn Rate (°/100usft)
9,100.0	90.00	88.69	6,909.0	-2,008.00	-2,310.7	813.2	1,825.7	0.00	0.00	0.00
9,200.0	90.00	88.69	6,909.0	-2,008.00	-2,308.4	913.2	1,912.2	0.00	0.00	0.00
9,300.0	90.00	88.69	6,909.0	-2,008.00	-2,306.1	1,013.2	1,998.7	0.00	0.00	0.00
9,400.0	90.00	88.69	6,909.0	-2,008.00	-2,303.8	1,113.2	2,085.2	0.00	0.00	0.00
9,500.0	90.00	88.69	6,909.0	-2,008.00	-2,301.6	1,213.1	2,171.8	0.00	0.00	0.00
9,600.0	90.00	88.69	6,909.0	-2,008.00	-2,299.3	1,313.1	2,258.3	0.00	0.00	0.00
9,700.0	90.00	88.69	6,909.0	-2,008.00	-2,297.0	1,413.1	2,344.8	0.00	0.00	0.00
9,800.0	90.00	88.69	6,909.0	-2,008.00	-2,294.7	1,513.1	2,431.3	0.00	0.00	0.00
9,900.0	90.00	88.69	6,909.0	-2,008.00	-2,292.5	1,613.0	2,517.8	0.00	0.00	0.00
10,000.0	90.00	88.69	6,909.0	-2,008.00	-2,290.2	1,713.0	2,604.3	0.00	0.00	0.00
10,100.0	90.00	88.69	6,909.0	-2,008.00	-2,287.9	1,813.0	2,690.8	0.00	0.00	0.00
10,200.0	90.00	88.69	6,909.0	-2,008.00	-2,285.6	1,913.0	2,777.4	0.00	0.00	0.00
10,300.0	90.00	88.69	6,909.0	-2,008.00	-2,283.3	2,012.9	2,863.9	0.00	0.00	0.00
10,400.0	90.00	88.69	6,909.0	-2,008.00	-2,281.1	2,112.9	2,950.4	0.00	0.00	0.00
10,500.0	90.00	88.69	6,909.0	-2,008.00	-2,278.8	2,212.9	3,036.9	0.00	0.00	0.00
10,600.0	90.00	88.69	6,909.0	-2,008.00	-2,276.5	2,312.9	3,123.4	0.00	0.00	0.00
10,700.0	90.00	88.69	6,909.0	-2,008.00	-2,274.2	2,412.8	3,209.9	0.00	0.00	0.00
10,800.0	90.00	88.69	6,909.0	-2,008.00	-2,272.0	2,512.8	3,296.4	0.00	0.00	0.00
10,900.0	90.00	88.69	6,909.0	-2,008.00	-2,269.7	2,612.8	3,383.0	0.00	0.00	0.00
11,000.0	90.00	88.69	6,909.0	-2,008.00	-2,267.4	2,712.7	3,469.5	0.00	0.00	0.00
11,100.0	90.00	88.69	6,909.0	-2,008.00	-2,265.1	2,812.7	3,556.0	0.00	0.00	0.00
11,200.0	90.00	88.69	6,909.0	-2,008.00	-2,262.8	2,912.7	3,642.5	0.00	0.00	0.00
11,300.0	90.00	88.69	6,909.0	-2,008.00	-2,260.6	3,012.7	3,729.0	0.00	0.00	0.00
11,400.0	90.00	88.69	6,909.0	-2,008.00	-2,258.3	3,112.6	3,815.5	0.00	0.00	0.00
11,500.0	90.00	88.69	6,909.0	-2,008.00	-2,256.0	3,212.6	3,902.0	0.00	0.00	0.00
11,600.0	90.00	88.69	6,909.0	-2,008.00	-2,253.7	3,312.6	3,988.6	0.00	0.00	0.00
11,700.0	90.00	88.69	6,909.0	-2,008.00	-2,251.4	3,412.6	4,075.1	0.00	0.00	0.00
11,800.0	90.00	88.69	6,909.0	-2,008.00	-2,249.2	3,512.5	4,161.6	0.00	0.00	0.00
11,900.0	90.00	88.69	6,909.0	-2,008.00	-2,246.9	3,612.5	4,248.1	0.00	0.00	0.00
12,000.0	90.00	88.69	6,909.0	-2,008.00	-2,244.6	3,712.5	4,334.6	0.00	0.00	0.00
12,100.0	90.00	88.69	6,909.0	-2,008.00	-2,242.3	3,812.5	4,421.1	0.00	0.00	0.00
12,200.0	90.00	88.69	6,909.0	-2,008.00	-2,240.1	3,912.4	4,507.6	0.00	0.00	0.00
12,300.0	90.00	88.69	6,909.0	-2,008.00	-2,237.8	4,012.4	4,594.2	0.00	0.00	0.00
BHL - MLD 1 (P2)										
12,356.5	90.00	88.69	6,909.0	-2,008.00	-2,236.5	4,068.9	4,643.0	0.00	0.00	0.00

Formations

MD (usft)	TVD (usft)	Name	Lithology	Dip (°)	Dip Direction (°)
3,287.5	3,265.0	PARKMAN		0.00	
4,020.3	3,910.0	SUSSEX		0.00	
4,503.7	4,309.0	SHANNON		0.00	
7,549.7	6,789.0	NIOBRARA		0.00	

Database:	EDM 5000.1 Single User Db	Local Co-ordinate Reference:	Well MLD 1
Company:	EXTRACTION OIL & GAS	TVD Reference:	KB-EST @ 4901.0usft (Original Well Elev)
Project:	WELD COUNTY, COLORADO (NAD 83)	MD Reference:	KB-EST @ 4901.0usft (Original Well Elev)
Site:	SW SW SEC. 22 T4N R68W 6th P.M.	North Reference:	True
Well:	MLD 1	Survey Calculation Method:	Minimum Curvature
Wellbore:	ORIGINAL WELLBORE		
Design:	PROPOSAL #2		

Plan Annotations

MD (usft)	TVD (usft)	Local Coordinates		Comment
		+N/-S (usft)	+E/-W (usft)	
2,250.0	2,250.0	0.0	0.0	START NUDGE (2°/100ft BUR)
3,969.0	3,867.7	-456.3	-205.6	EOB TO 34.38° INC
6,919.3	6,302.6	-1,975.1	-890.1	START BUILD & TURN
7,960.4	6,909.0	-2,336.6	-326.1	HZ LP - MLD 1 (P2)
12,356.5	6,909.0	-2,236.5	4,068.9	BHL - MLD 1 (P2)