

EXTRACTION OIL & GAS

WELD COUNTY, COLORADO (NAD 83)

SW SW SEC. 22 T4N R68W 6th P.M.

MLD 5

ORIGINAL WELLBORE

31 May, 2017

Plan: PROPOSAL #2

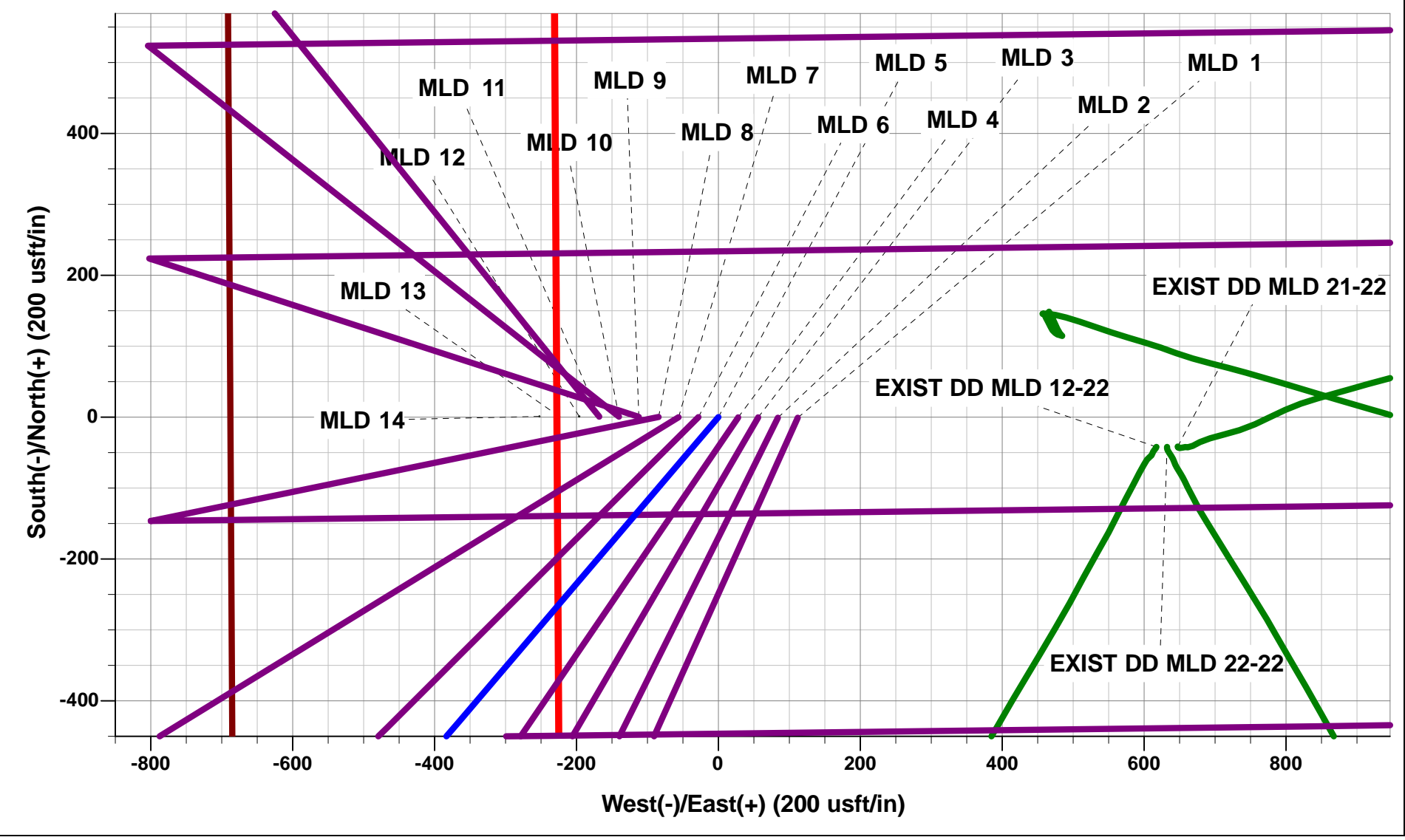




Project: WELD COUNTY, COLORADO (NAD 83)
Site: SW SW SEC. 22 T4N R68W 6th P.M.
Well: MLD 5
Wellbore: ORIGINAL WELLBORE
Design: PROPOSAL #2

ANNOTATIONS								
TVD	MD	Inc	Azi	+N/-S	+E/-W	VSect	Dep	Annotation
1850.0	1850.0	0.00	0.00	0.0	0.0	0.0	0.0	START NUDGE (2°/100ft BUR)
2687.6	2700.0	17.00	220.41	-95.3	-81.2	-56.4	125.2	EOB TO 17° INC
6243.3	6418.2	17.00	220.41	-923.0	-785.9	-545.9	1212.2	START BUILD & TURN
6908.9	7419.4	89.06	89.50	-1069.3	-231.4	27.4	1838.5	HZ LP - MLD 5 (P2)
6909.0	11828.6	90.00	89.28	-1014.2	4177.5	4298.8	6247.7	BHL - MLD 5 (P2)

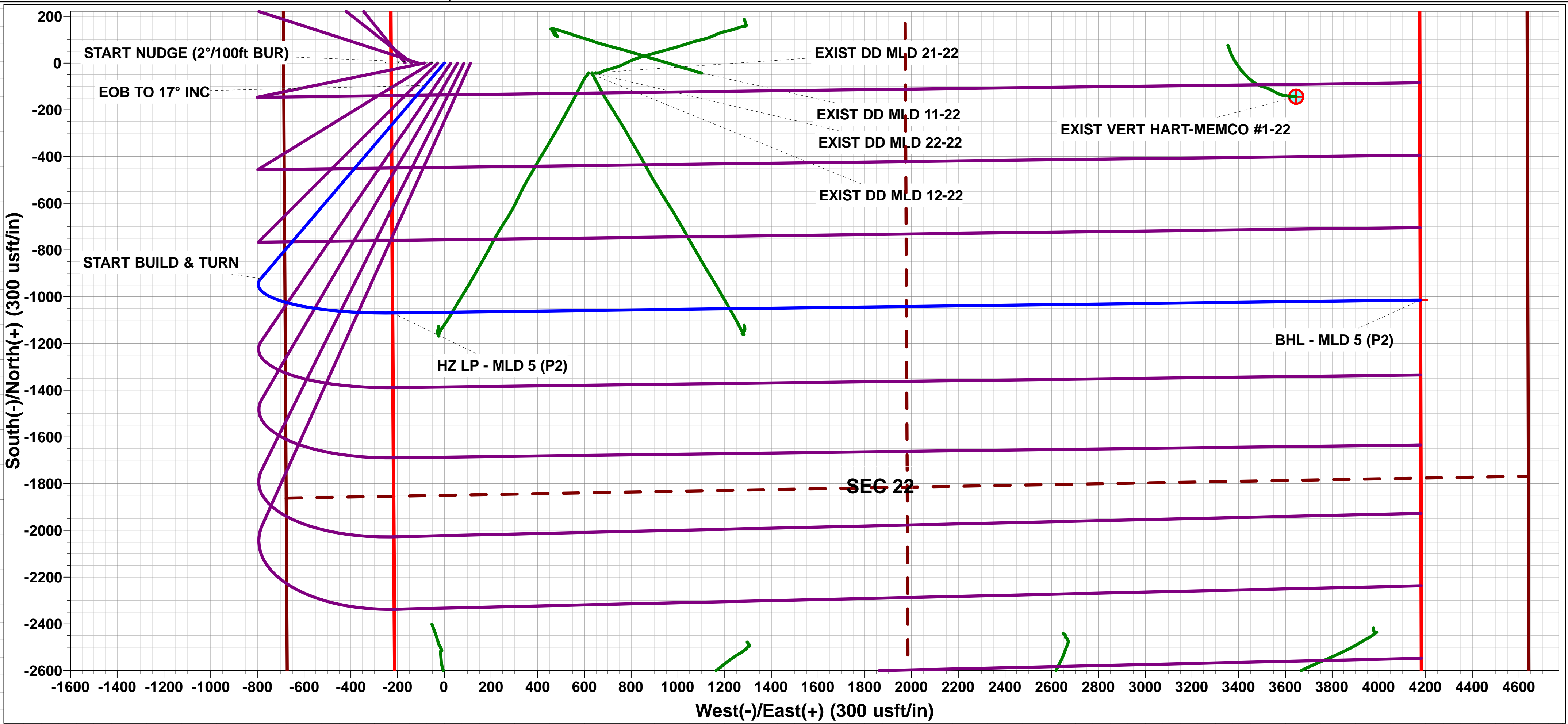
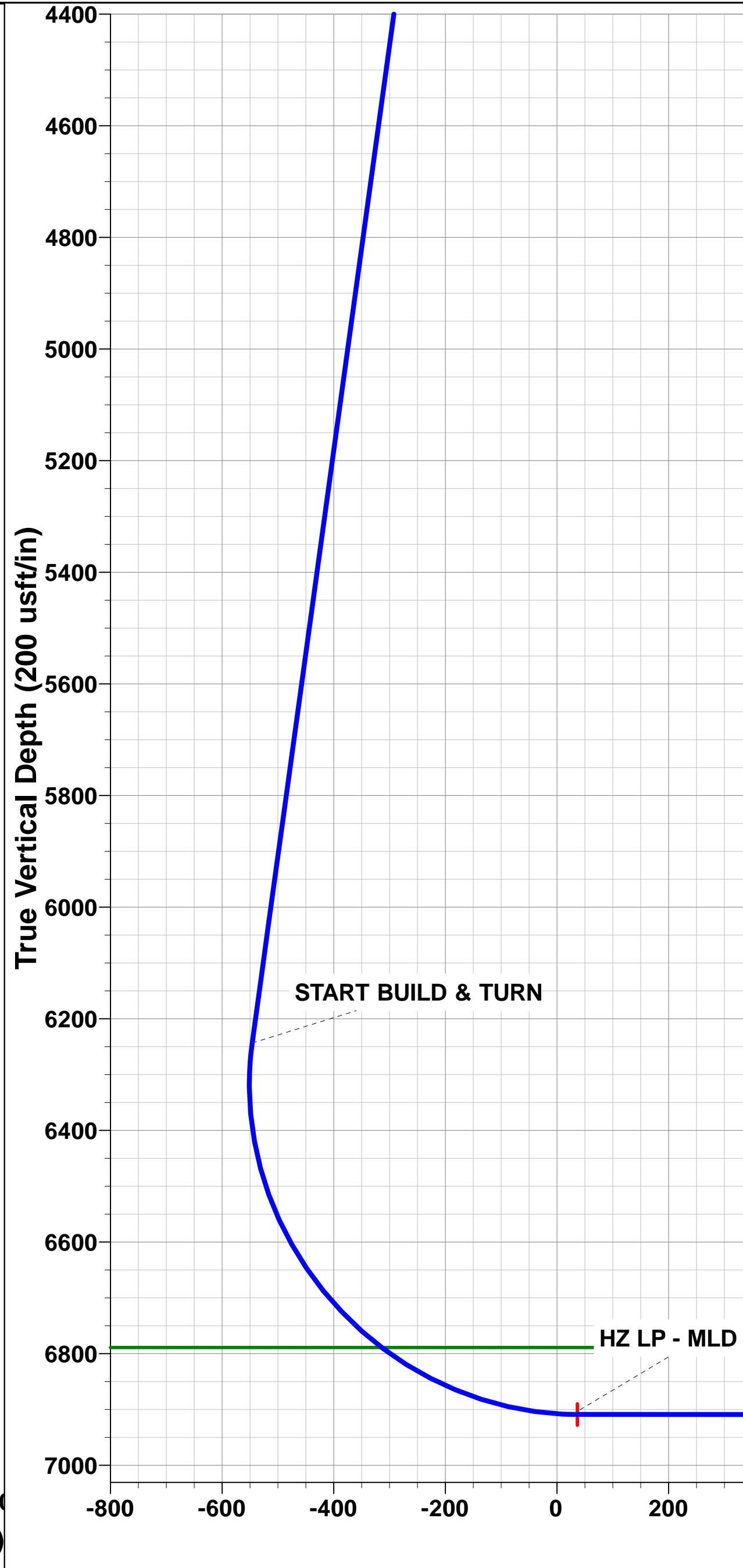
WELLBORE TARGET DETAILS (LAT/LONG)					
Name	TVD	+N/-S	+E/-W	Latitude	Longitude
HZ LP - MLD 5 (P2)	6909.0	-1069.2	-221.7	40.301035	-104.997161
BHL - MLD 5 (P2)	6909.0	-1014.2	4177.5	40.301185	-104.981389



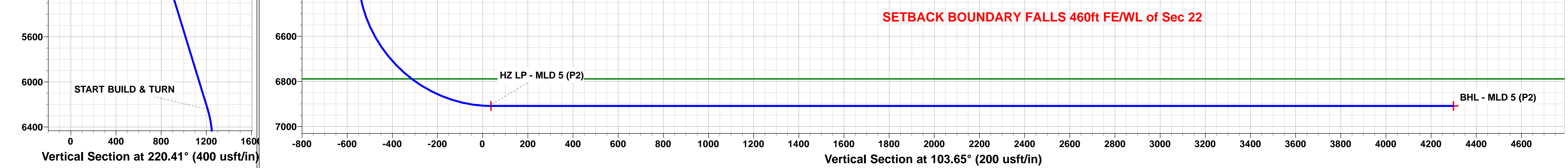
FORMATION TOP DETAILS		
TVDPath	MDPath	Formation
3265.0	3303.8	PARKMAN
3910.0	3978.3	SUSSEX
4309.0	4395.5	SHANNON
6789.0	7046.3	NIOBRARA

Azimuths to True North
Magnetic North: 8.33°

Magnetic Field
Strength: 52322.7snT
Dip Angle: 66.74°
Date: 31/05/2017
Model: IGRF2015



SETBACK BOUNDARY FALLS 460ft FE/WL of Sec 22



Planning Report



Database:	EDM 5000.1 Single User Db	Local Co-ordinate Reference:	Well MLD 5
Company:	EXTRACTION OIL & GAS	TVD Reference:	KB-EST @ 4900.0usft (Original Well Elev)
Project:	WELD COUNTY, COLORADO (NAD 83)	MD Reference:	KB-EST @ 4900.0usft (Original Well Elev)
Site:	SW SW SEC. 22 T4N R68W 6th P.M.	North Reference:	True
Well:	MLD 5	Survey Calculation Method:	Minimum Curvature
Wellbore:	ORIGINAL WELLBORE		
Design:	PROPOSAL #2		

Project	WELD COUNTY, COLORADO (NAD 83)		
Map System:	US State Plane 1983	System Datum:	Mean Sea Level
Geo Datum:	North American Datum 1983		
Map Zone:	Colorado Northern Zone		Using geodetic scale factor

Site	SW SW SEC. 22 T4N R68W 6th P.M.		
Site Position:		Northing:	1,350,393.80 usft
From:	Lat/Long	Easting:	3,140,798.83 usft
Position Uncertainty:	0.0 usft	Slot Radius:	1.10000ft
		Latitude:	40.294131
		Longitude:	-104.995243
		Grid Convergence:	0.33 °

Well	MLD 5		
Well Position	+N/-S	3,584.4 usft	Northing: 1,353,976.20 usfi
	+E/-W	-313.2 usft	Easting: 3,140,465.22 usfi
Position Uncertainty	0.0 usft	Wellhead Elevation:	usfi
		Latitude:	40.303970
		Longitude:	-104.996366
		Ground Level:	4,876.0 usft

Wellbore	ORIGINAL WELLBORE				
Magnetics	Model Name	Sample Date	Declination (°)	Dip Angle (°)	Field Strength (nT)
	IGRF2015	31/05/2017	8.33	66.74	52,323

Design	PROPOSAL #2			
Audit Notes:				
Version:	Phase:	PROTOTYPE	Tie On Depth:	0.0
Vertical Section:	Depth From (TVD) (usft)	+N/-S (usft)	+E/-W (usft)	Direction (°)
	6,909.0	0.0	0.0	103.65

Plan Sections											
MD (usft)	Inc (°)	Azi (°)	Vertical Depth	SS (usft)	+N/-S (usft)	+E/-W (usft)	Dogleg Rate (°/100usf)	Build Rate (°/100usf)	Turn Rate (°/100usf)	TFO (°)	Target
0.0	0.00	0.00	0.0	-4,900.0	0.0	0.0	0.00	0.00	0.00	0.00	
1,850.0	0.00	0.00	1,850.0	-3,050.0	0.0	0.0	0.00	0.00	0.00	0.00	
2,700.0	17.00	220.41	2,687.6	-2,212.4	-95.3	-81.1	2.00	2.00	0.00	220.41	
6,418.2	17.00	220.41	6,243.3	1,343.3	-923.0	-785.9	0.00	0.00	0.00	0.00	
7,429.0	90.00	89.28	6,909.0	2,009.0	-1,069.2	-221.7	10.00	7.22	-12.97	-129.87	HZ LP - MLD 5 (P2)
11,828.6	90.00	89.28	6,909.0	2,009.0	-1,014.2	4,177.5	0.00	0.00	0.00	0.00	BHL - MLD 5 (P2)

Planning Report



Database:	EDM 5000.1 Single User Db	Local Co-ordinate Reference:	Well MLD 5
Company:	EXTRACTION OIL & GAS	TVD Reference:	KB-EST @ 4900.0usft (Original Well Elev)
Project:	WELD COUNTY, COLORADO (NAD 83)	MD Reference:	KB-EST @ 4900.0usft (Original Well Elev)
Site:	SW SW SEC. 22 T4N R68W 6th P.M.	North Reference:	True
Well:	MLD 5	Survey Calculation Method:	Minimum Curvature
Wellbore:	ORIGINAL WELLBORE		
Design:	PROPOSAL #2		

Planned Survey										
MD (usft)	Inc (°)	Azi (°)	TVD (usft)	SS (usft)	+N/-S (usft)	+E/-W (usft)	Vertical Section (usft)	Dogleg Rate (°/100usft)	Build Rate (°/100usft)	Turn Rate (°/100usft)
0.0	0.00	0.00	0.0	4,900.00	0.0	0.0	0.0	0.00	0.00	0.00
100.0	0.00	0.00	100.0	4,800.00	0.0	0.0	0.0	0.00	0.00	0.00
200.0	0.00	0.00	200.0	4,700.00	0.0	0.0	0.0	0.00	0.00	0.00
300.0	0.00	0.00	300.0	4,600.00	0.0	0.0	0.0	0.00	0.00	0.00
400.0	0.00	0.00	400.0	4,500.00	0.0	0.0	0.0	0.00	0.00	0.00
500.0	0.00	0.00	500.0	4,400.00	0.0	0.0	0.0	0.00	0.00	0.00
600.0	0.00	0.00	600.0	4,300.00	0.0	0.0	0.0	0.00	0.00	0.00
700.0	0.00	0.00	700.0	4,200.00	0.0	0.0	0.0	0.00	0.00	0.00
800.0	0.00	0.00	800.0	4,100.00	0.0	0.0	0.0	0.00	0.00	0.00
900.0	0.00	0.00	900.0	4,000.00	0.0	0.0	0.0	0.00	0.00	0.00
1,000.0	0.00	0.00	1,000.0	3,900.00	0.0	0.0	0.0	0.00	0.00	0.00
1,100.0	0.00	0.00	1,100.0	3,800.00	0.0	0.0	0.0	0.00	0.00	0.00
1,200.0	0.00	0.00	1,200.0	3,700.00	0.0	0.0	0.0	0.00	0.00	0.00
1,300.0	0.00	0.00	1,300.0	3,600.00	0.0	0.0	0.0	0.00	0.00	0.00
1,400.0	0.00	0.00	1,400.0	3,500.00	0.0	0.0	0.0	0.00	0.00	0.00
1,500.0	0.00	0.00	1,500.0	3,400.00	0.0	0.0	0.0	0.00	0.00	0.00
1,600.0	0.00	0.00	1,600.0	3,300.00	0.0	0.0	0.0	0.00	0.00	0.00
1,700.0	0.00	0.00	1,700.0	3,200.00	0.0	0.0	0.0	0.00	0.00	0.00
1,800.0	0.00	0.00	1,800.0	3,100.00	0.0	0.0	0.0	0.00	0.00	0.00
START NUDGE (2°/100ft BUR)										
1,850.0	0.00	0.00	1,850.0	3,050.00	0.0	0.0	0.0	0.00	0.00	0.00
1,900.0	1.00	220.41	1,900.0	3,000.00	-0.3	-0.3	-0.2	2.00	2.00	0.00
2,000.0	3.00	220.41	1,999.9	2,900.07	-3.0	-2.5	-1.8	2.00	2.00	0.00
2,100.0	5.00	220.41	2,099.7	2,800.32	-8.3	-7.1	-4.9	2.00	2.00	0.00
2,200.0	7.00	220.41	2,199.1	2,700.87	-16.3	-13.8	-9.6	2.00	2.00	0.00
2,300.0	9.00	220.41	2,298.2	2,601.85	-26.9	-22.9	-15.9	2.00	2.00	0.00
2,400.0	11.00	220.41	2,396.6	2,503.37	-40.1	-34.1	-23.7	2.00	2.00	0.00
2,500.0	13.00	220.41	2,494.4	2,405.56	-55.9	-47.6	-33.1	2.00	2.00	0.00
2,600.0	15.00	220.41	2,591.5	2,308.54	-74.3	-63.3	-44.0	2.00	2.00	0.00
EOB TO 17° INC										
2,700.0	17.00	220.41	2,687.6	2,212.42	-95.3	-81.2	-56.4	2.00	2.00	0.00
2,800.0	17.00	220.41	2,783.2	2,116.79	-117.6	-100.1	-69.5	0.00	0.00	0.00
2,900.0	17.00	220.41	2,878.8	2,021.16	-139.8	-119.1	-82.7	0.00	0.00	0.00
3,000.0	17.00	220.41	2,974.5	1,925.52	-162.1	-138.0	-95.9	0.00	0.00	0.00
3,100.0	17.00	220.41	3,070.1	1,829.89	-184.3	-157.0	-109.0	0.00	0.00	0.00
3,200.0	17.00	220.41	3,165.7	1,734.26	-206.6	-175.9	-122.2	0.00	0.00	0.00
3,300.0	17.00	220.41	3,261.4	1,638.63	-228.9	-194.9	-135.4	0.00	0.00	0.00
PARKMAN										
3,303.8	17.00	220.41	3,265.0	1,635.00	-229.7	-195.6	-135.9	0.00	0.00	0.00
3,400.0	17.00	220.41	3,357.0	1,543.00	-251.1	-213.8	-148.5	0.00	0.00	0.00
3,500.0	17.00	220.41	3,452.6	1,447.37	-273.4	-232.8	-161.7	0.00	0.00	0.00
3,600.0	17.00	220.41	3,548.3	1,351.74	-295.6	-251.7	-174.9	0.00	0.00	0.00
3,700.0	17.00	220.41	3,643.9	1,256.11	-317.9	-270.7	-188.0	0.00	0.00	0.00
3,800.0	17.00	220.41	3,739.5	1,160.48	-340.2	-289.6	-201.2	0.00	0.00	0.00
3,900.0	17.00	220.41	3,835.2	1,064.85	-362.4	-308.6	-214.4	0.00	0.00	0.00
SUSSEX										
3,978.3	17.00	220.41	3,910.0	990.00	-379.9	-323.4	-224.7	0.00	0.00	0.00
4,000.0	17.00	220.41	3,930.8	969.22	-384.7	-327.6	-227.5	0.00	0.00	0.00
4,100.0	17.00	220.41	4,026.4	873.59	-406.9	-346.5	-240.7	0.00	0.00	0.00
4,200.0	17.00	220.41	4,122.0	777.96	-429.2	-365.5	-253.9	0.00	0.00	0.00
4,300.0	17.00	220.41	4,217.7	682.32	-451.5	-384.4	-267.0	0.00	0.00	0.00
SHANNON										
4,395.5	17.00	220.41	4,309.0	591.00	-472.7	-402.5	-279.6	0.00	0.00	0.00
4,400.0	17.00	220.41	4,313.3	586.69	-473.7	-403.4	-280.2	0.00	0.00	0.00

Planning Report



Database:	EDM 5000.1 Single User Db	Local Co-ordinate Reference:	Well MLD 5
Company:	EXTRACTION OIL & GAS	TVD Reference:	KB-EST @ 4900.0usft (Original Well Elev)
Project:	WELD COUNTY, COLORADO (NAD 83)	MD Reference:	KB-EST @ 4900.0usft (Original Well Elev)
Site:	SW SW SEC. 22 T4N R68W 6th P.M.	North Reference:	True
Well:	MLD 5	Survey Calculation Method:	Minimum Curvature
Wellbore:	ORIGINAL WELLBORE		
Design:	PROPOSAL #2		

Planned Survey										
MD (usft)	Inc (°)	Azi (°)	TVD (usft)	SS (usft)	+N/-S (usft)	+E/-W (usft)	Vertical Section (usft)	Dogleg Rate (°/100usft)	Build Rate (°/100usft)	Turn Rate (°/100usft)
4,500.0	17.00	220.41	4,408.9	491.06	-496.0	-422.3	-293.4	0.00	0.00	0.00
4,600.0	17.00	220.41	4,504.6	395.43	-518.2	-441.3	-306.5	0.00	0.00	0.00
4,700.0	17.00	220.41	4,600.2	299.80	-540.5	-460.2	-319.7	0.00	0.00	0.00
4,800.0	17.00	220.41	4,695.8	204.17	-562.8	-479.2	-332.9	0.00	0.00	0.00
4,900.0	17.00	220.41	4,791.5	108.54	-585.0	-498.1	-346.0	0.00	0.00	0.00
5,000.0	17.00	220.41	4,887.1	12.91	-607.3	-517.1	-359.2	0.00	0.00	0.00
5,100.0	17.00	220.41	4,982.7	-82.72	-629.5	-536.0	-372.4	0.00	0.00	0.00
5,200.0	17.00	220.41	5,078.4	-178.35	-651.8	-555.0	-385.5	0.00	0.00	0.00
5,300.0	17.00	220.41	5,174.0	-273.98	-674.1	-574.0	-398.7	0.00	0.00	0.00
5,400.0	17.00	220.41	5,269.6	-369.61	-696.3	-592.9	-411.9	0.00	0.00	0.00
5,500.0	17.00	220.41	5,365.2	-465.24	-718.6	-611.9	-425.1	0.00	0.00	0.00
5,600.0	17.00	220.41	5,460.9	-560.88	-740.8	-630.8	-438.2	0.00	0.00	0.00
5,700.0	17.00	220.41	5,556.5	-656.51	-763.1	-649.8	-451.4	0.00	0.00	0.00
5,800.0	17.00	220.41	5,652.1	-752.14	-785.4	-668.7	-464.6	0.00	0.00	0.00
5,900.0	17.00	220.41	5,747.8	-847.77	-807.6	-687.7	-477.7	0.00	0.00	0.00
6,000.0	17.00	220.41	5,843.4	-943.40	-829.9	-706.6	-490.9	0.00	0.00	0.00
6,100.0	17.00	220.41	5,939.0	-1,039.03	-852.1	-725.6	-504.1	0.00	0.00	0.00
6,200.0	17.00	220.41	6,034.7	-1,134.66	-874.4	-744.5	-517.2	0.00	0.00	0.00
6,300.0	17.00	220.41	6,130.3	-1,230.29	-896.7	-763.5	-530.4	0.00	0.00	0.00
6,400.0	17.00	220.41	6,225.9	-1,325.92	-918.9	-782.4	-543.6	0.00	0.00	0.00
START BUILD & TURN										
6,418.2	17.00	220.41	6,243.3	-1,343.33	-923.0	-785.9	-545.9	0.00	0.00	0.00
6,500.0	13.28	192.02	6,322.4	-1,422.38	-941.3	-795.6	-551.1	10.01	-4.54	-34.72
6,600.0	14.75	150.26	6,419.6	-1,519.64	-963.7	-791.7	-542.0	10.00	1.47	-41.76
6,700.0	21.34	125.40	6,514.8	-1,614.81	-985.3	-770.5	-516.3	10.00	6.59	-24.86
6,800.0	29.83	112.96	6,605.0	-1,704.98	-1,005.6	-732.7	-474.7	10.00	8.49	-12.43
6,900.0	38.99	105.81	6,687.4	-1,787.43	-1,023.9	-679.3	-418.6	10.00	9.16	-7.15
7,000.0	48.44	101.06	6,759.6	-1,859.65	-1,039.7	-612.2	-349.6	10.00	9.45	-4.75
NIORARA										
7,046.3	52.87	99.32	6,789.0	-1,889.00	-1,046.0	-577.0	-313.9	10.00	9.57	-3.76
7,100.0	58.04	97.54	6,819.4	-1,919.44	-1,052.5	-533.2	-269.9	10.00	9.62	-3.31
7,200.0	67.71	94.70	6,865.0	-1,964.98	-1,061.9	-444.8	-181.7	10.00	9.68	-2.85
7,300.0	77.43	92.23	6,894.9	-1,994.90	-1,067.6	-349.7	-88.0	10.00	9.72	-2.47
7,400.0	87.17	89.94	6,908.3	-2,008.28	-1,069.4	-250.8	8.6	10.00	9.74	-2.29
HZ LP - MLD 5 (P2)										
7,419.4	89.06	89.50	6,908.9	-2,008.92	-1,069.3	-231.4	27.4	10.00	9.74	-2.25
7,429.0	90.00	89.28	6,909.0	-2,009.00	-1,069.2	-221.7	36.8	10.00	9.74	-2.24
7,500.0	90.00	89.28	6,909.0	-2,009.00	-1,068.3	-150.8	105.5	0.00	0.00	0.00
7,600.0	90.00	89.28	6,909.0	-2,009.00	-1,067.1	-50.8	202.4	0.00	0.00	0.00
7,700.0	90.00	89.28	6,909.0	-2,009.00	-1,065.8	49.2	299.3	0.00	0.00	0.00
7,800.0	90.00	89.28	6,909.0	-2,009.00	-1,064.6	149.2	396.2	0.00	0.00	0.00
7,900.0	90.00	89.28	6,909.0	-2,009.00	-1,063.3	249.2	493.0	0.00	0.00	0.00
8,000.0	90.00	89.28	6,909.0	-2,009.00	-1,062.1	349.2	589.9	0.00	0.00	0.00
8,100.0	90.00	89.28	6,909.0	-2,009.00	-1,060.8	449.2	686.8	0.00	0.00	0.00
8,200.0	90.00	89.28	6,909.0	-2,009.00	-1,059.6	549.2	783.7	0.00	0.00	0.00
8,300.0	90.00	89.28	6,909.0	-2,009.00	-1,058.3	649.2	880.5	0.00	0.00	0.00
8,400.0	90.00	89.28	6,909.0	-2,009.00	-1,057.1	749.1	977.4	0.00	0.00	0.00
8,500.0	90.00	89.28	6,909.0	-2,009.00	-1,055.8	849.1	1,074.3	0.00	0.00	0.00
8,600.0	90.00	89.28	6,909.0	-2,009.00	-1,054.6	949.1	1,171.1	0.00	0.00	0.00
8,700.0	90.00	89.28	6,909.0	-2,009.00	-1,053.3	1,049.1	1,268.0	0.00	0.00	0.00
8,800.0	90.00	89.28	6,909.0	-2,009.00	-1,052.1	1,149.1	1,364.9	0.00	0.00	0.00
8,900.0	90.00	89.28	6,909.0	-2,009.00	-1,050.8	1,249.1	1,461.8	0.00	0.00	0.00
9,000.0	90.00	89.28	6,909.0	-2,009.00	-1,049.6	1,349.1	1,558.6	0.00	0.00	0.00

Planning Report



Database:	EDM 5000.1 Single User Db	Local Co-ordinate Reference:	Well MLD 5
Company:	EXTRACTION OIL & GAS	TVD Reference:	KB-EST @ 4900.0usft (Original Well Elev)
Project:	WELD COUNTY, COLORADO (NAD 83)	MD Reference:	KB-EST @ 4900.0usft (Original Well Elev)
Site:	SW SW SEC. 22 T4N R68W 6th P.M.	North Reference:	True
Well:	MLD 5	Survey Calculation Method:	Minimum Curvature
Wellbore:	ORIGINAL WELLBORE		
Design:	PROPOSAL #2		

Planned Survey										
MD (usft)	Inc (°)	Azi (°)	TVD (usft)	SS (usft)	+N/-S (usft)	+E/-W (usft)	Vertical Section (usft)	Dogleg Rate (°/100usft)	Build Rate (°/100usft)	Turn Rate (°/100usft)
9,100.0	90.00	89.28	6,909.0	-2,009.00	-1,048.3	1,449.1	1,655.5	0.00	0.00	0.00
9,200.0	90.00	89.28	6,909.0	-2,009.00	-1,047.1	1,549.1	1,752.4	0.00	0.00	0.00
9,300.0	90.00	89.28	6,909.0	-2,009.00	-1,045.8	1,649.1	1,849.3	0.00	0.00	0.00
9,400.0	90.00	89.28	6,909.0	-2,009.00	-1,044.6	1,749.1	1,946.1	0.00	0.00	0.00
9,500.0	90.00	89.28	6,909.0	-2,009.00	-1,043.3	1,849.1	2,043.0	0.00	0.00	0.00
9,600.0	90.00	89.28	6,909.0	-2,009.00	-1,042.1	1,949.1	2,139.9	0.00	0.00	0.00
9,700.0	90.00	89.28	6,909.0	-2,009.00	-1,040.8	2,049.0	2,236.8	0.00	0.00	0.00
9,800.0	90.00	89.28	6,909.0	-2,009.00	-1,039.6	2,149.0	2,333.6	0.00	0.00	0.00
9,900.0	90.00	89.28	6,909.0	-2,009.00	-1,038.3	2,249.0	2,430.5	0.00	0.00	0.00
10,000.0	90.00	89.28	6,909.0	-2,009.00	-1,037.1	2,349.0	2,527.4	0.00	0.00	0.00
10,100.0	90.00	89.28	6,909.0	-2,009.00	-1,035.8	2,449.0	2,624.3	0.00	0.00	0.00
10,200.0	90.00	89.28	6,909.0	-2,009.00	-1,034.6	2,549.0	2,721.1	0.00	0.00	0.00
10,300.0	90.00	89.28	6,909.0	-2,009.00	-1,033.3	2,649.0	2,818.0	0.00	0.00	0.00
10,400.0	90.00	89.28	6,909.0	-2,009.00	-1,032.1	2,749.0	2,914.9	0.00	0.00	0.00
10,500.0	90.00	89.28	6,909.0	-2,009.00	-1,030.8	2,849.0	3,011.8	0.00	0.00	0.00
10,600.0	90.00	89.28	6,909.0	-2,009.00	-1,029.6	2,949.0	3,108.6	0.00	0.00	0.00
10,700.0	90.00	89.28	6,909.0	-2,009.00	-1,028.3	3,049.0	3,205.5	0.00	0.00	0.00
10,800.0	90.00	89.28	6,909.0	-2,009.00	-1,027.1	3,149.0	3,302.4	0.00	0.00	0.00
10,900.0	90.00	89.28	6,909.0	-2,009.00	-1,025.8	3,249.0	3,399.3	0.00	0.00	0.00
11,000.0	90.00	89.28	6,909.0	-2,009.00	-1,024.6	3,348.9	3,496.1	0.00	0.00	0.00
11,100.0	90.00	89.28	6,909.0	-2,009.00	-1,023.3	3,448.9	3,593.0	0.00	0.00	0.00
11,200.0	90.00	89.28	6,909.0	-2,009.00	-1,022.1	3,548.9	3,689.9	0.00	0.00	0.00
11,300.0	90.00	89.28	6,909.0	-2,009.00	-1,020.8	3,648.9	3,786.8	0.00	0.00	0.00
11,400.0	90.00	89.28	6,909.0	-2,009.00	-1,019.6	3,748.9	3,883.6	0.00	0.00	0.00
11,500.0	90.00	89.28	6,909.0	-2,009.00	-1,018.3	3,848.9	3,980.5	0.00	0.00	0.00
11,600.0	90.00	89.28	6,909.0	-2,009.00	-1,017.1	3,948.9	4,077.4	0.00	0.00	0.00
11,700.0	90.00	89.28	6,909.0	-2,009.00	-1,015.8	4,048.9	4,174.3	0.00	0.00	0.00
11,800.0	90.00	89.28	6,909.0	-2,009.00	-1,014.6	4,148.9	4,271.1	0.00	0.00	0.00
BHL - MLD 5 (P2)										
11,828.6	90.00	89.28	6,909.0	-2,009.00	-1,014.2	4,177.5	4,298.8	0.00	0.00	0.00

Formations						
MD (usft)	TVD (usft)	Name	Lithology	Dip (°)	Dip Direction (°)	
3,303.8	3,265.0	PARKMAN		0.00		
3,978.3	3,910.0	SUSSEX		0.00		
4,395.5	4,309.0	SHANNON		0.00		
7,046.3	6,789.0	NIOBRARA		0.00		

Plan Annotations				
MD (usft)	TVD (usft)	Local Coordinates		Comment
		+N/-S (usft)	+E/-W (usft)	
1,850.0	1,850.0	0.0	0.0	START NUDGE (2°/100ft BUR)
2,700.0	2,687.6	-95.3	-81.2	EOB TO 17° INC
6,418.2	6,243.3	-923.0	-785.9	START BUILD & TURN
7,419.4	6,908.9	-1,069.3	-231.4	HZ LP - MLD 5 (P2)
11,828.6	6,909.0	-1,014.2	4,177.5	BHL - MLD 5 (P2)