

EXTRACTION OIL & GAS

WELD COUNTY, COLORADO (NAD 83)

SW SW SEC. 22 T4N R68W 6th P.M.

MLD 6

ORIGINAL WELLBORE

01 June, 2017

Plan: PROPOSAL #2





Project: WELD COUNTY, COLORADO (NAD 83)
Site: SW SW SEC. 22 T4N R68W 6th P.M.
Well: MLD 6
Wellbore: ORIGINAL WELLBORE
Design: PROPOSAL #2

ANNOTATIONS

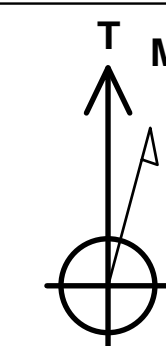
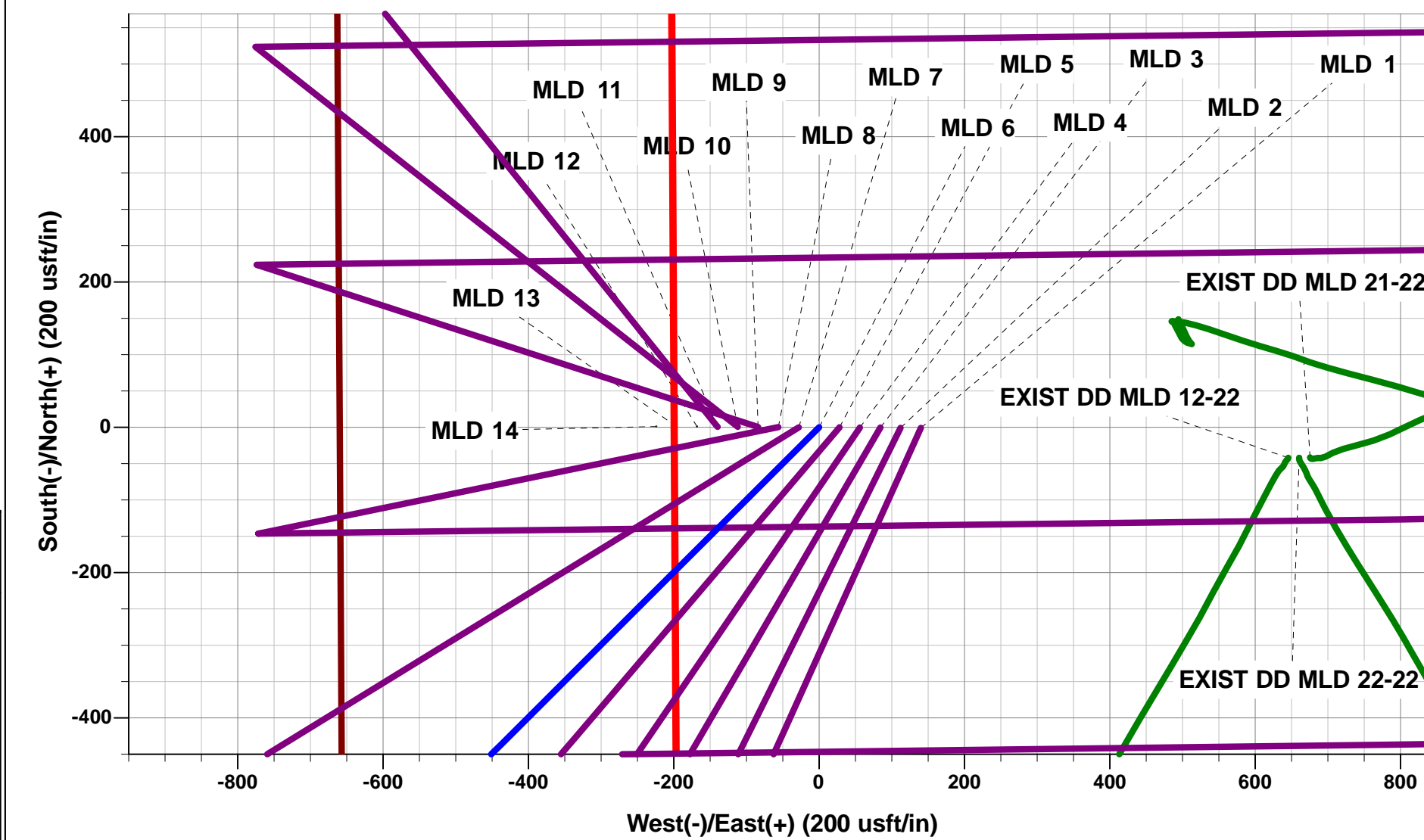
TVD	MD	Inc	Azi	+N/-S	+E/-W	VSect	Dep	Annotation
1750.0	1750.0	0.00	0.00	0.0	0.0	0.0	0.0	START NUDGE (2°/100ft BUR)
2496.5	2505.2	15.10	225.06	-69.9	-70.1	-57.5	99.0	EOB TO 15.1° INC
5783.7	5910.0	15.10	225.06	-696.5	-698.1	-573.4	986.1	END OF TANGENT
6530.1	6665.1	0.00	225.06	-766.4	-768.1	-631.0	1085.1	EOD TO VERTICAL
6560.1	6695.1	0.00	0.00	-766.4	-768.1	-631.0	1085.1	KOP (10°/100ft BUR)
7133.0	7595.0	90.00	89.28	-759.2	-195.3	-67.2	1657.9	HZ LP - MLD 6 (P2)
7133.0	11995.4	90.00	89.29	-704.2	4204.8	4263.3	6058.3	BHL - MLD 6 (P2)

WELLBORE TARGET DETAILS (LAT/LONG)

Name	TVD	+N/-S	+E/-W	Latitude	Longitude
KOP - MLD 6 (P2)	6560.1	-766.4	-768.1	40.301866	-104.999221
HZ LP - MLD 6 (P2)	7133.0	-759.2	-195.2	40.301886	-104.997167
BHL - MLD 6 (P2)	7133.0	-704.2	4204.8	40.302036	-104.981392

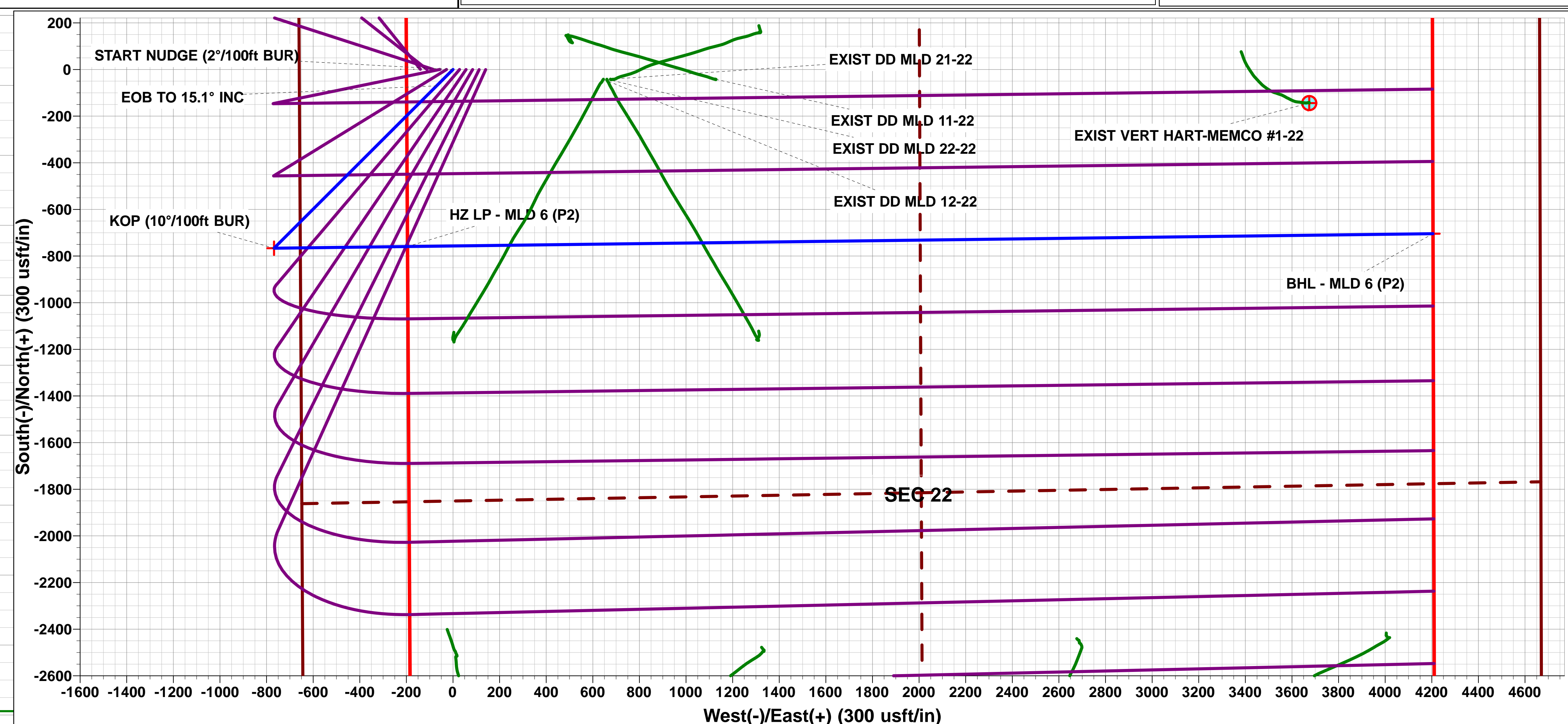
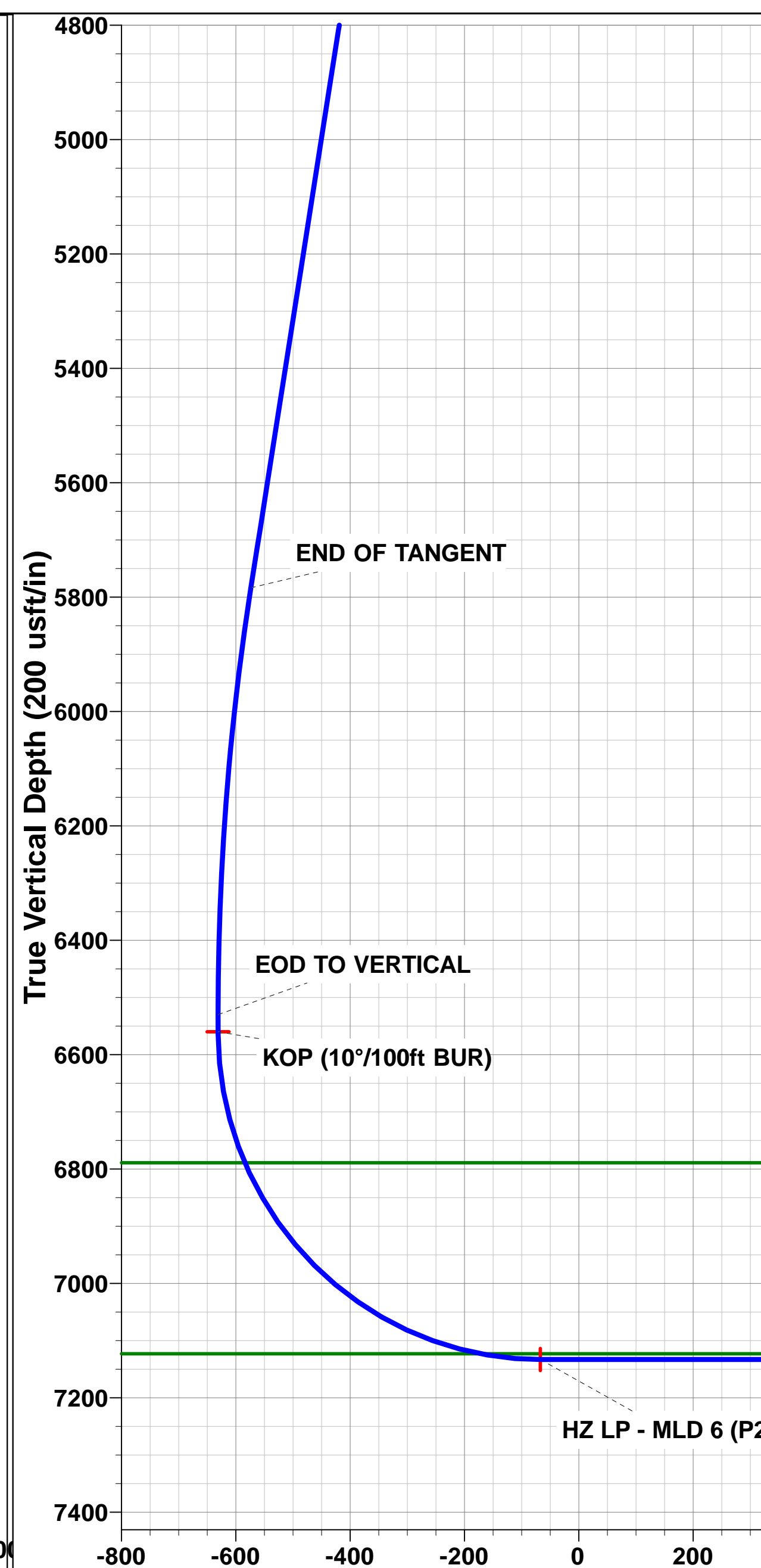
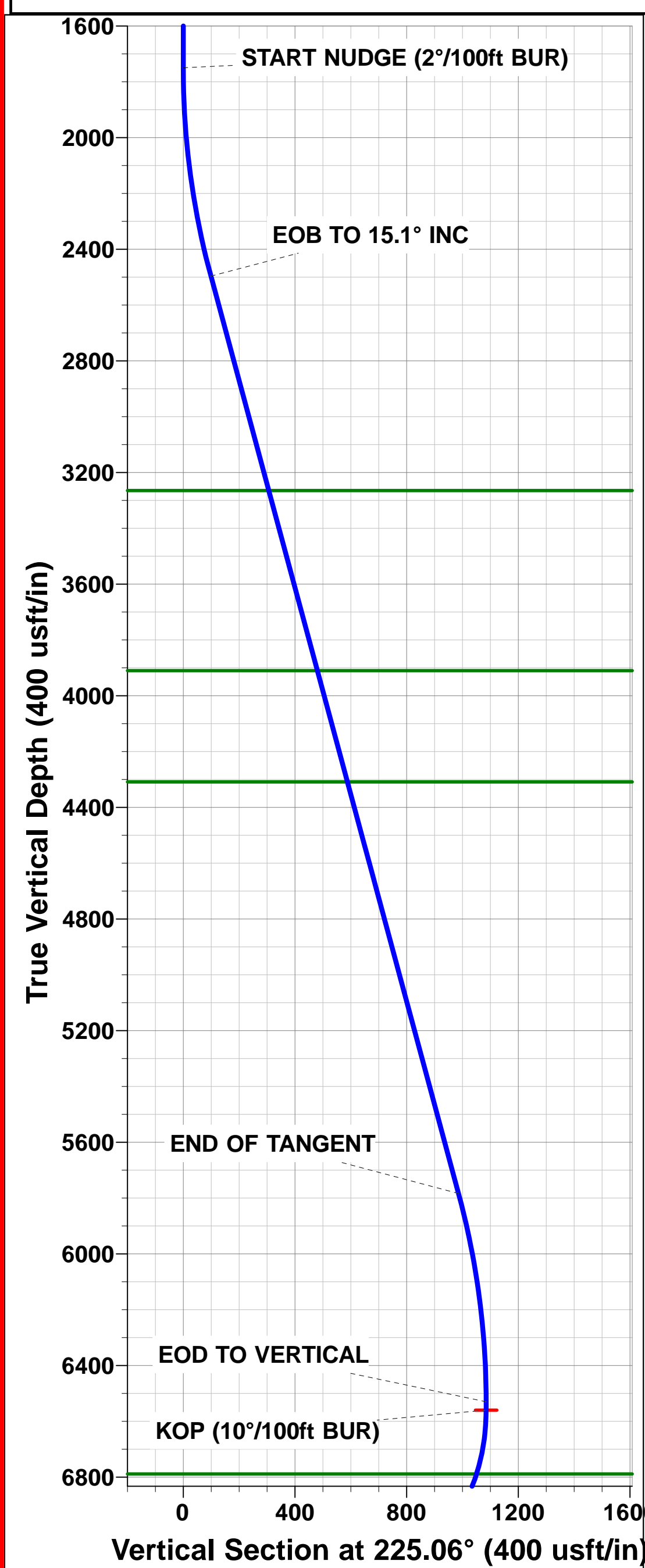
FORMATION TOP DETAILS

TVDPath	MDPath	Formation
3265.0	3301.2	PARKMAN
3910.0	3969.3	SUSSEX
4309.0	4382.6	SHANNON
6789.0	6930.6	NIOBRARA
7123.0	7487.8	CODELL



Azimuths to True North
Magnetic North: 8.33°

Magnetic Field
Strength: 52322.6snT
Dip Angle: 66.74°
Date: 31/05/2017
Model: IGRF2015



SETBACK BOUNDARY FALLS 460ft FE/WL of Sec 22

BHL - MLD 6 (P2)

Planning Report



Database:	EDM 5000.1 Single User Db	Local Co-ordinate Reference:	Well MLD 6
Company:	EXTRACTION OIL & GAS	TVD Reference:	KB-EST @ 4900.0usft (Original Well Elev)
Project:	WELD COUNTY, COLORADO (NAD 83)	MD Reference:	KB-EST @ 4900.0usft (Original Well Elev)
Site:	SW SW SEC. 22 T4N R68W 6th P.M.	North Reference:	True
Well:	MLD 6	Survey Calculation Method:	Minimum Curvature
Wellbore:	ORIGINAL WELLBORE		
Design:	PROPOSAL #2		

Project	WELD COUNTY, COLORADO (NAD 83)		
Map System:	US State Plane 1983	System Datum:	Mean Sea Level
Geo Datum:	North American Datum 1983		
Map Zone:	Colorado Northern Zone		Using geodetic scale factor

Site		SW SW SEC. 22 T4N R68W 6th P.M.			
Site Position:		Northing:	1,350,393.80 usft	Latitude:	40.294131
From:	Lat/Long	Easting:	3,140,798.83 usft	Longitude:	-104.995243
Position Uncertainty:	0.0 usft	Slot Radius:	1.10000ft	Grid Convergence:	0.33 °

Well	MLD 6					
Well Position	+N/-S	3,584.4 usft	Northing:	1,353,976.04 usfi	Latitude:	40.303970
	+E/-W	-341.4 usft	Easting:	3,140,437.05 usfi	Longitude:	-104.996467
Position Uncertainty		0.0 usft	Wellhead Elevation:	usfi	Ground Level:	4,876.0 usft

Wellbore	ORIGINAL WELLBORE				
Magnetics	Model Name	Sample Date	Declination (°)	Dip Angle (°)	Field Strength (nT)
	IGRF2015	31/05/2017	8.33	66.74	52,323

Design	PROPOSAL #2			
Audit Notes:				
Version:	Phase:	PROTOTYPE	Tie On Depth:	0.0
Vertical Section:	Depth From (TVD) (usft)	+N/-S (usft)	+E/-W (usft)	Direction (°)
	0.0	0.0	0.0	99.51

Plan Sections											
MD (usft)	Inc (°)	Azi (°)	Vertical Depth	SS (usft)	+N/-S (usft)	+E/-W (usft)	Dogleg Rate (°/100usf)	Build Rate (°/100usf)	Turn Rate (°/100usf)	TFO (°)	Target
0.0	0.00	0.00	0.0	-4,900.0	0.0	0.0	0.00	0.00	0.00	0.00	
1,750.0	0.00	0.00	1,750.0	-3,150.0	0.0	0.0	0.00	0.00	0.00	0.00	
2,505.2	15.10	225.06	2,496.4	-2,403.6	-69.9	-70.0	2.00	2.00	0.00	225.06	
5,910.0	15.10	225.06	5,783.7	883.7	-696.5	-698.1	0.00	0.00	0.00	0.00	
6,665.1	0.00	0.00	6,530.1	1,630.1	-766.4	-768.1	2.00	-2.00	0.00	180.00	
6,695.1	0.00	0.00	6,560.1	1,660.1	-766.4	-768.1	0.00	0.00	0.00	0.00	KOP - MLD 6 (P2)
7,595.0	90.00	89.28	7,133.0	2,233.0	-759.2	-195.2	10.00	10.00	9.92	89.28	HZ LP - MLD 6 (P2)
11,995.4	90.00	89.29	7,133.0	2,233.0	-704.2	4,204.8	0.00	0.00	0.00	85.97	BHL - MLD 6 (P2)

Planning Report



Database:	EDM 5000.1 Single User Db	Local Co-ordinate Reference:	Well MLD 6
Company:	EXTRACTION OIL & GAS	TVD Reference:	KB-EST @ 4900.0usft (Original Well Elev)
Project:	WELD COUNTY, COLORADO (NAD 83)	MD Reference:	KB-EST @ 4900.0usft (Original Well Elev)
Site:	SW SW SEC. 22 T4N R68W 6th P.M.	North Reference:	True
Well:	MLD 6	Survey Calculation Method:	Minimum Curvature
Wellbore:	ORIGINAL WELLBORE		
Design:	PROPOSAL #2		

Planned Survey

MD (usft)	Inc (°)	Azi (°)	TVD (usft)	SS (usft)	+N/-S (usft)	+E/-W (usft)	Vertical Section (usft)	Dogleg Rate (°/100usft)	Build Rate (°/100usft)	Turn Rate (°/100usft)
0.0	0.00	0.00	0.0	4,900.00	0.0	0.0	0.0	0.00	0.00	0.00
100.0	0.00	0.00	100.0	4,800.00	0.0	0.0	0.0	0.00	0.00	0.00
200.0	0.00	0.00	200.0	4,700.00	0.0	0.0	0.0	0.00	0.00	0.00
300.0	0.00	0.00	300.0	4,600.00	0.0	0.0	0.0	0.00	0.00	0.00
400.0	0.00	0.00	400.0	4,500.00	0.0	0.0	0.0	0.00	0.00	0.00
500.0	0.00	0.00	500.0	4,400.00	0.0	0.0	0.0	0.00	0.00	0.00
600.0	0.00	0.00	600.0	4,300.00	0.0	0.0	0.0	0.00	0.00	0.00
700.0	0.00	0.00	700.0	4,200.00	0.0	0.0	0.0	0.00	0.00	0.00
800.0	0.00	0.00	800.0	4,100.00	0.0	0.0	0.0	0.00	0.00	0.00
900.0	0.00	0.00	900.0	4,000.00	0.0	0.0	0.0	0.00	0.00	0.00
1,000.0	0.00	0.00	1,000.0	3,900.00	0.0	0.0	0.0	0.00	0.00	0.00
1,100.0	0.00	0.00	1,100.0	3,800.00	0.0	0.0	0.0	0.00	0.00	0.00
1,200.0	0.00	0.00	1,200.0	3,700.00	0.0	0.0	0.0	0.00	0.00	0.00
1,300.0	0.00	0.00	1,300.0	3,600.00	0.0	0.0	0.0	0.00	0.00	0.00
1,400.0	0.00	0.00	1,400.0	3,500.00	0.0	0.0	0.0	0.00	0.00	0.00
1,500.0	0.00	0.00	1,500.0	3,400.00	0.0	0.0	0.0	0.00	0.00	0.00
1,600.0	0.00	0.00	1,600.0	3,300.00	0.0	0.0	0.0	0.00	0.00	0.00
1,700.0	0.00	0.00	1,700.0	3,200.00	0.0	0.0	0.0	0.00	0.00	0.00
START NUDGE (2°/100ft BUR)										
1,750.0	0.00	0.00	1,750.0	3,150.00	0.0	0.0	0.0	0.00	0.00	0.00
1,800.0	1.00	225.06	1,800.0	3,100.00	-0.3	-0.3	-0.3	2.00	2.00	0.00
1,900.0	3.00	225.06	1,899.9	3,000.07	-2.8	-2.8	-2.3	2.00	2.00	0.00
2,000.0	5.00	225.06	1,999.7	2,900.32	-7.7	-7.7	-6.3	2.00	2.00	0.00
2,100.0	7.00	225.06	2,099.1	2,800.87	-15.1	-15.1	-12.4	2.00	2.00	0.00
2,200.0	9.00	225.06	2,198.2	2,701.85	-24.9	-25.0	-20.5	2.00	2.00	0.00
2,300.0	11.00	225.06	2,296.6	2,603.37	-37.2	-37.3	-30.6	2.00	2.00	0.00
2,400.0	13.00	225.06	2,394.4	2,505.56	-51.9	-52.0	-42.7	2.00	2.00	0.00
2,500.0	15.00	225.06	2,491.5	2,408.54	-68.9	-69.1	-56.8	2.00	2.00	0.00
EOB TO 15.1° INC										
2,505.2	15.10	225.06	2,496.5	2,403.52	-69.9	-70.1	-57.5	1.98	1.98	0.00
2,600.0	15.10	225.06	2,588.0	2,311.99	-87.3	-87.5	-71.9	0.00	0.00	0.00
2,700.0	15.10	225.06	2,684.6	2,215.45	-105.8	-106.0	-87.1	0.00	0.00	0.00
2,800.0	15.10	225.06	2,781.1	2,118.90	-124.2	-124.4	-102.2	0.00	0.00	0.00
2,900.0	15.10	225.06	2,877.6	2,022.35	-142.6	-142.9	-117.4	0.00	0.00	0.00
3,000.0	15.10	225.06	2,974.2	1,925.81	-161.0	-161.3	-132.5	0.00	0.00	0.00
3,100.0	15.10	225.06	3,070.7	1,829.26	-179.4	-179.8	-147.7	0.00	0.00	0.00
3,200.0	15.10	225.06	3,167.3	1,732.72	-197.8	-198.2	-162.8	0.00	0.00	0.00
3,300.0	15.10	225.06	3,263.8	1,636.17	-216.2	-216.7	-178.0	0.00	0.00	0.00
PARKMAN										
3,301.2	15.10	225.06	3,265.0	1,635.00	-216.4	-216.9	-178.2	0.00	0.00	0.00
3,400.0	15.10	225.06	3,360.4	1,539.62	-234.6	-235.1	-193.1	0.00	0.00	0.00
3,500.0	15.10	225.06	3,456.9	1,443.08	-253.0	-253.5	-208.3	0.00	0.00	0.00
3,600.0	15.10	225.06	3,553.5	1,346.53	-271.4	-272.0	-223.4	0.00	0.00	0.00
3,700.0	15.10	225.06	3,650.0	1,249.99	-289.8	-290.4	-238.6	0.00	0.00	0.00
3,800.0	15.10	225.06	3,746.6	1,153.44	-308.2	-308.9	-253.7	0.00	0.00	0.00
3,900.0	15.10	225.06	3,843.1	1,056.89	-326.6	-327.3	-268.9	0.00	0.00	0.00
SUSSEX										
3,969.3	15.10	225.06	3,910.0	990.00	-339.3	-340.1	-279.4	0.00	0.00	0.00
4,000.0	15.10	225.06	3,939.7	960.35	-345.0	-345.8	-284.0	0.00	0.00	0.00
4,100.0	15.10	225.06	4,036.2	863.80	-363.4	-364.2	-299.2	0.00	0.00	0.00
4,200.0	15.10	225.06	4,132.7	767.26	-381.8	-382.7	-314.3	0.00	0.00	0.00
4,300.0	15.10	225.06	4,229.3	670.71	-400.2	-401.1	-329.5	0.00	0.00	0.00
SHANNON										
4,382.6	15.10	225.06	4,309.0	591.00	-415.4	-416.3	-342.0	0.00	0.00	0.00

Database:	EDM 5000.1 Single User Db	Local Co-ordinate Reference:	Well MLD 6
Company:	EXTRACTION OIL & GAS	TVD Reference:	KB-EST @ 4900.0usft (Original Well Elev)
Project:	WELD COUNTY, COLORADO (NAD 83)	MD Reference:	KB-EST @ 4900.0usft (Original Well Elev)
Site:	SW SW SEC. 22 T4N R68W 6th P.M.	North Reference:	True
Well:	MLD 6	Survey Calculation Method:	Minimum Curvature
Wellbore:	ORIGINAL WELLBORE		
Design:	PROPOSAL #2		

Planned Survey

MD (usft)	Inc (°)	Azi (°)	TVD (usft)	SS (usft)	+N/-S (usft)	+E/-W (usft)	Vertical Section (usft)	Dogleg Rate (°/100usft)	Build Rate (°/100usft)	Turn Rate (°/100usft)
4,400.0	15.10	225.06	4,325.8	574.17	-418.6	-419.5	-344.6	0.00	0.00	0.00
4,500.0	15.10	225.06	4,422.4	477.62	-437.0	-438.0	-359.8	0.00	0.00	0.00
4,600.0	15.10	225.06	4,518.9	381.07	-455.4	-456.4	-374.9	0.00	0.00	0.00
4,700.0	15.10	225.06	4,615.5	284.53	-473.8	-474.9	-390.1	0.00	0.00	0.00
4,800.0	15.10	225.06	4,712.0	187.98	-492.2	-493.3	-405.2	0.00	0.00	0.00
4,900.0	15.10	225.06	4,808.6	91.44	-510.6	-511.8	-420.4	0.00	0.00	0.00
5,000.0	15.10	225.06	4,905.1	-5.11	-529.0	-530.2	-435.5	0.00	0.00	0.00
5,100.0	15.10	225.06	5,001.7	-101.66	-547.4	-548.7	-450.7	0.00	0.00	0.00
5,200.0	15.10	225.06	5,098.2	-198.20	-565.8	-567.1	-465.8	0.00	0.00	0.00
5,300.0	15.10	225.06	5,194.7	-294.75	-584.2	-585.5	-481.0	0.00	0.00	0.00
5,400.0	15.10	225.06	5,291.3	-391.29	-602.7	-604.0	-496.1	0.00	0.00	0.00
5,500.0	15.10	225.06	5,387.8	-487.84	-621.1	-622.4	-511.3	0.00	0.00	0.00
5,600.0	15.10	225.06	5,484.4	-584.39	-639.5	-640.9	-526.5	0.00	0.00	0.00
5,700.0	15.10	225.06	5,580.9	-680.93	-657.9	-659.3	-541.6	0.00	0.00	0.00
5,800.0	15.10	225.06	5,677.5	-777.48	-676.3	-677.8	-556.8	0.00	0.00	0.00
5,900.0	15.10	225.06	5,774.0	-874.02	-694.7	-696.2	-571.9	0.00	0.00	0.00
END OF TANGENT										
5,910.0	15.10	225.06	5,783.7	-883.68	-696.5	-698.1	-573.4	0.00	0.00	0.00
6,000.0	13.30	225.06	5,870.9	-970.92	-712.1	-713.7	-586.3	2.00	-2.00	0.00
6,100.0	11.30	225.06	5,968.6	-1,068.62	-727.2	-728.8	-598.7	2.00	-2.00	0.00
6,200.0	9.30	225.06	6,067.0	-1,167.00	-739.8	-741.4	-609.0	2.00	-2.00	0.00
6,300.0	7.30	225.06	6,166.0	-1,265.95	-750.0	-751.6	-617.4	2.00	-2.00	0.00
6,400.0	5.30	225.06	6,265.3	-1,365.34	-757.7	-759.4	-623.8	2.00	-2.00	0.00
6,500.0	3.30	225.06	6,365.1	-1,465.05	-763.0	-764.7	-628.2	2.00	-2.00	0.00
6,600.0	1.30	225.06	6,465.0	-1,564.97	-765.9	-767.6	-630.5	2.00	-2.00	0.00
EOD TO VERTICAL										
6,665.1	0.00	225.06	6,530.1	-1,630.06	-766.4	-768.1	-631.0	2.00	-2.00	0.00
KOP (10°/100ft BUR)										
6,695.1	0.00	0.00	6,560.1	-1,660.06	-766.4	-768.1	-631.0	0.00	0.00	0.00
6,700.0	0.49	89.28	6,565.0	-1,664.96	-766.4	-768.1	-630.9	9.93	9.93	0.00
6,800.0	10.49	89.28	6,664.4	-1,764.38	-766.3	-758.5	-621.5	10.00	10.00	0.00
6,900.0	20.49	89.28	6,760.6	-1,860.63	-765.9	-731.9	-595.3	10.00	10.00	0.00
NIOBRARA										
6,930.6	23.55	89.28	6,789.0	-1,889.00	-765.8	-720.4	-584.0	10.00	10.00	0.00
7,000.0	30.49	89.28	6,850.8	-1,950.78	-765.4	-688.9	-553.0	10.00	10.00	0.00
7,100.0	40.49	89.28	6,932.1	-2,032.10	-764.7	-630.9	-495.9	10.00	10.00	0.00
7,200.0	50.49	89.28	7,002.1	-2,102.11	-763.8	-559.7	-425.8	10.00	10.00	0.00
7,300.0	60.49	89.28	7,058.7	-2,158.69	-762.7	-477.4	-344.9	10.00	10.00	0.00
7,400.0	70.49	89.28	7,100.1	-2,200.12	-761.6	-386.5	-255.4	10.00	10.00	0.00
CODELL										
7,487.8	79.28	89.28	7,123.0	-2,223.00	-760.5	-301.8	-172.0	10.00	10.00	0.00
7,500.0	80.49	89.28	7,125.1	-2,225.13	-760.4	-289.8	-160.3	10.00	10.00	0.00
HZ LP - MLD 6 (P2)										
7,595.0	90.00	89.28	7,133.0	-2,233.00	-759.2	-195.3	-67.2	10.00	10.00	0.00
7,600.0	90.00	89.28	7,133.0	-2,233.00	-759.1	-190.3	-62.3	0.09	0.09	0.00
7,700.0	90.00	89.28	7,133.0	-2,233.00	-757.9	-90.3	36.1	0.00	0.00	0.00
7,800.0	90.00	89.28	7,133.0	-2,233.00	-756.6	9.7	134.5	0.00	0.00	0.00
7,900.0	90.00	89.28	7,133.0	-2,233.00	-755.4	109.7	232.9	0.00	0.00	0.00
8,000.0	90.00	89.28	7,133.0	-2,233.00	-754.1	209.7	331.4	0.00	0.00	0.00
8,100.0	90.00	89.28	7,133.0	-2,233.00	-752.9	309.7	429.8	0.00	0.00	0.00
8,200.0	90.00	89.28	7,133.0	-2,233.00	-751.6	409.7	528.2	0.00	0.00	0.00
8,300.0	90.00	89.28	7,133.0	-2,233.00	-750.4	509.7	626.6	0.00	0.00	0.00
8,400.0	90.00	89.28	7,133.0	-2,233.00	-749.1	609.6	725.0	0.00	0.00	0.00

Database:	EDM 5000.1 Single User Db	Local Co-ordinate Reference:	Well MLD 6
Company:	EXTRACTION OIL & GAS	TVD Reference:	KB-EST @ 4900.0usft (Original Well Elev)
Project:	WELD COUNTY, COLORADO (NAD 83)	MD Reference:	KB-EST @ 4900.0usft (Original Well Elev)
Site:	SW SW SEC. 22 T4N R68W 6th P.M.	North Reference:	True
Well:	MLD 6	Survey Calculation Method:	Minimum Curvature
Wellbore:	ORIGINAL WELLBORE		
Design:	PROPOSAL #2		

Planned Survey

MD (usft)	Inc (°)	Azi (°)	TVD (usft)	SS (usft)	+N/-S (usft)	+E/-W (usft)	Vertical Section (usft)	Dogleg Rate (°/100usft)	Build Rate (°/100usft)	Turn Rate (°/100usft)
8,500.0	90.00	89.28	7,133.0	-2,233.00	-747.8	709.6	823.4	0.00	0.00	0.00
8,600.0	90.00	89.28	7,133.0	-2,233.00	-746.6	809.6	921.8	0.00	0.00	0.00
8,700.0	90.00	89.28	7,133.0	-2,233.00	-745.3	909.6	1,020.2	0.00	0.00	0.00
8,800.0	90.00	89.28	7,133.0	-2,233.00	-744.1	1,009.6	1,118.7	0.00	0.00	0.00
8,900.0	90.00	89.28	7,133.0	-2,233.00	-742.8	1,109.6	1,217.1	0.00	0.00	0.00
9,000.0	90.00	89.28	7,133.0	-2,233.00	-741.6	1,209.6	1,315.5	0.00	0.00	0.00
9,100.0	90.00	89.28	7,133.0	-2,233.00	-740.3	1,309.6	1,413.9	0.00	0.00	0.00
9,200.0	90.00	89.28	7,133.0	-2,233.00	-739.1	1,409.6	1,512.3	0.00	0.00	0.00
9,300.0	90.00	89.28	7,133.0	-2,233.00	-737.8	1,509.6	1,610.7	0.00	0.00	0.00
9,400.0	90.00	89.28	7,133.0	-2,233.00	-736.6	1,609.6	1,709.1	0.00	0.00	0.00
9,500.0	90.00	89.28	7,133.0	-2,233.00	-735.3	1,709.6	1,807.5	0.00	0.00	0.00
9,600.0	90.00	89.28	7,133.0	-2,233.00	-734.1	1,809.6	1,905.9	0.00	0.00	0.00
9,700.0	90.00	89.28	7,133.0	-2,233.00	-732.8	1,909.5	2,004.4	0.00	0.00	0.00
9,800.0	90.00	89.28	7,133.0	-2,233.00	-731.6	2,009.5	2,102.8	0.00	0.00	0.00
9,900.0	90.00	89.28	7,133.0	-2,233.00	-730.3	2,109.5	2,201.2	0.00	0.00	0.00
10,000.0	90.00	89.28	7,133.0	-2,233.00	-729.1	2,209.5	2,299.6	0.00	0.00	0.00
10,100.0	90.00	89.28	7,133.0	-2,233.00	-727.8	2,309.5	2,398.0	0.00	0.00	0.00
10,200.0	90.00	89.28	7,133.0	-2,233.00	-726.6	2,409.5	2,496.4	0.00	0.00	0.00
10,300.0	90.00	89.28	7,133.0	-2,233.00	-725.3	2,509.5	2,594.8	0.00	0.00	0.00
10,400.0	90.00	89.28	7,133.0	-2,233.00	-724.1	2,609.5	2,693.2	0.00	0.00	0.00
10,500.0	90.00	89.28	7,133.0	-2,233.00	-722.8	2,709.5	2,791.7	0.00	0.00	0.00
10,600.0	90.00	89.29	7,133.0	-2,233.00	-721.6	2,809.5	2,890.1	0.00	0.00	0.00
10,700.0	90.00	89.29	7,133.0	-2,233.00	-720.3	2,909.5	2,988.5	0.00	0.00	0.00
10,800.0	90.00	89.29	7,133.0	-2,233.00	-719.1	3,009.5	3,086.9	0.00	0.00	0.00
10,900.0	90.00	89.29	7,133.0	-2,233.00	-717.8	3,109.4	3,185.3	0.00	0.00	0.00
11,000.0	90.00	89.29	7,133.0	-2,233.00	-716.6	3,209.4	3,283.7	0.00	0.00	0.00
11,100.0	90.00	89.29	7,133.0	-2,233.00	-715.3	3,309.4	3,382.1	0.00	0.00	0.00
11,200.0	90.00	89.29	7,133.0	-2,233.00	-714.1	3,409.4	3,480.5	0.00	0.00	0.00
11,300.0	90.00	89.29	7,133.0	-2,233.00	-712.9	3,509.4	3,579.0	0.00	0.00	0.00
11,400.0	90.00	89.29	7,133.0	-2,233.00	-711.6	3,609.4	3,677.4	0.00	0.00	0.00
11,500.0	90.00	89.29	7,133.0	-2,233.00	-710.4	3,709.4	3,775.8	0.00	0.00	0.00
11,600.0	90.00	89.29	7,133.0	-2,233.00	-709.1	3,809.4	3,874.2	0.00	0.00	0.00
11,700.0	90.00	89.29	7,133.0	-2,233.00	-707.9	3,909.4	3,972.6	0.00	0.00	0.00
11,800.0	90.00	89.29	7,133.0	-2,233.00	-706.6	4,009.4	4,071.0	0.00	0.00	0.00
11,900.0	90.00	89.29	7,133.0	-2,233.00	-705.4	4,109.4	4,169.4	0.00	0.00	0.00
BHL - MLD 6 (P2)										
11,995.4	90.00	89.29	7,133.0	-2,233.00	-704.2	4,204.8	4,263.3	0.00	0.00	0.00

Formations

MD (usft)	TVD (usft)	Name	Lithology	Dip (°)	Dip Direction (°)
3,301.2	3,265.0	PARKMAN		0.00	
3,969.3	3,910.0	SUSSEX		0.00	
4,382.6	4,309.0	SHANNON		0.00	
6,930.6	6,789.0	NIOBRARA		0.00	
7,487.8	7,123.0	CODELL		0.00	

Database:	EDM 5000.1 Single User Db	Local Co-ordinate Reference:	Well MLD 6
Company:	EXTRACTION OIL & GAS	TVD Reference:	KB-EST @ 4900.0usft (Original Well Elev)
Project:	WELD COUNTY, COLORADO (NAD 83)	MD Reference:	KB-EST @ 4900.0usft (Original Well Elev)
Site:	SW SW SEC. 22 T4N R68W 6th P.M.	North Reference:	True
Well:	MLD 6	Survey Calculation Method:	Minimum Curvature
Wellbore:	ORIGINAL WELLBORE		
Design:	PROPOSAL #2		

Plan Annotations

MD (usft)	TVD (usft)	Local Coordinates		Comment
		+N/-S (usft)	+E/-W (usft)	
1,750.0	1,750.0	0.0	0.0	START NUDGE (2°/100ft BUR)
2,505.2	2,496.5	-69.9	-70.1	EOB TO 15.1° INC
5,910.0	5,783.7	-696.5	-698.1	END OF TANGENT
6,665.1	6,530.1	-766.4	-768.1	EOD TO VERTICAL
6,695.1	6,560.1	-766.4	-768.1	KOP (10°/100ft BUR)
7,595.0	7,133.0	-759.2	-195.3	HZ LP - MLD 6 (P2)
11,995.4	7,133.0	-704.2	4,204.8	BHL - MLD 6 (P2)