

# **EXTRACTION OIL & GAS**

**WELD COUNTY, COLORADO (NAD 83)**

**SW SW SEC. 22 T4N R68W 6th P.M.**

**MLD 7**

**ORIGINAL WELLBORE**

**01 June, 2017**

**Plan: PROPOSAL #2**

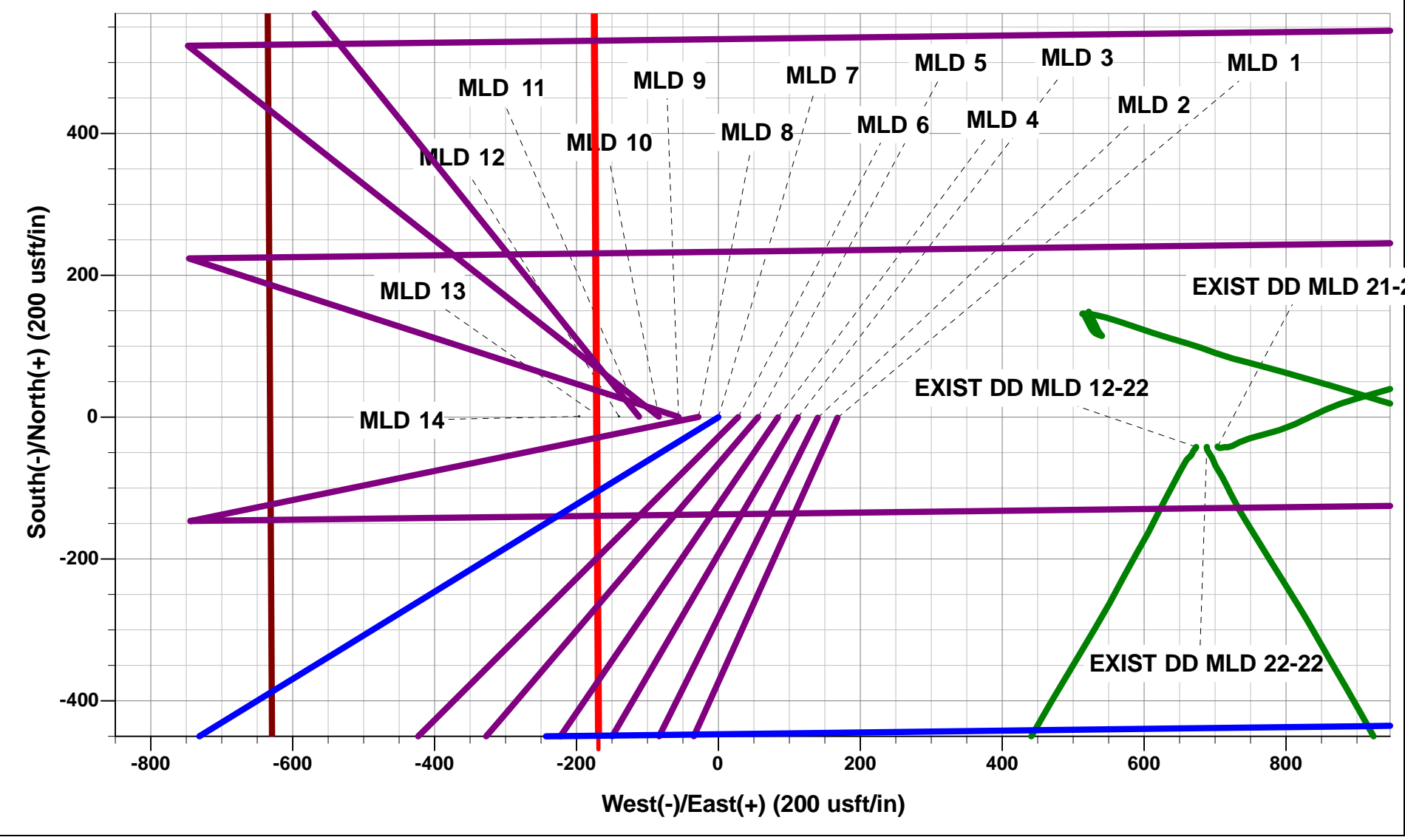




Project: WELD COUNTY, COLORADO (NAD 83)  
Site: SW SW SEC. 22 T4N R68W 6th P.M.  
Well: MLD 7  
Wellbore: ORIGINAL WELLBORE  
Design: PROPOSAL #2

ANNOTATIONS								
TVD	MD	Inc	Azi	+N/-S	+E/-W	VSect	Dep	Annotation
1650.0	1650.0	0.00	0.00	0.0	0.0	0.0	0.0	START NUDGE (2°/100ft BUR)
2252.9	2257.4	12.15	238.40	-33.6	-54.6	-51.3	64.2	EOB TO 12.15° INC
5703.2	5786.8	12.15	238.40	-422.8	-687.3	-645.1	806.9	END OF TANGENT
6306.1	6394.2	0.00	238.40	-456.4	-741.9	-696.4	871.0	EOD TO VERTICAL
6336.1	6424.2	0.00	0.00	-456.4	-741.9	-696.4	871.0	KOP (10°/100ft BUR)
6909.0	7324.1	90.00	89.28	-449.2	-169.1	-126.7	1443.9	HZ LP - MLD 7 (P2)
6909.0	11725.3	90.00	89.29	-394.2	4231.8	4250.1	5845.1	BHL - MLD 7 (P2)

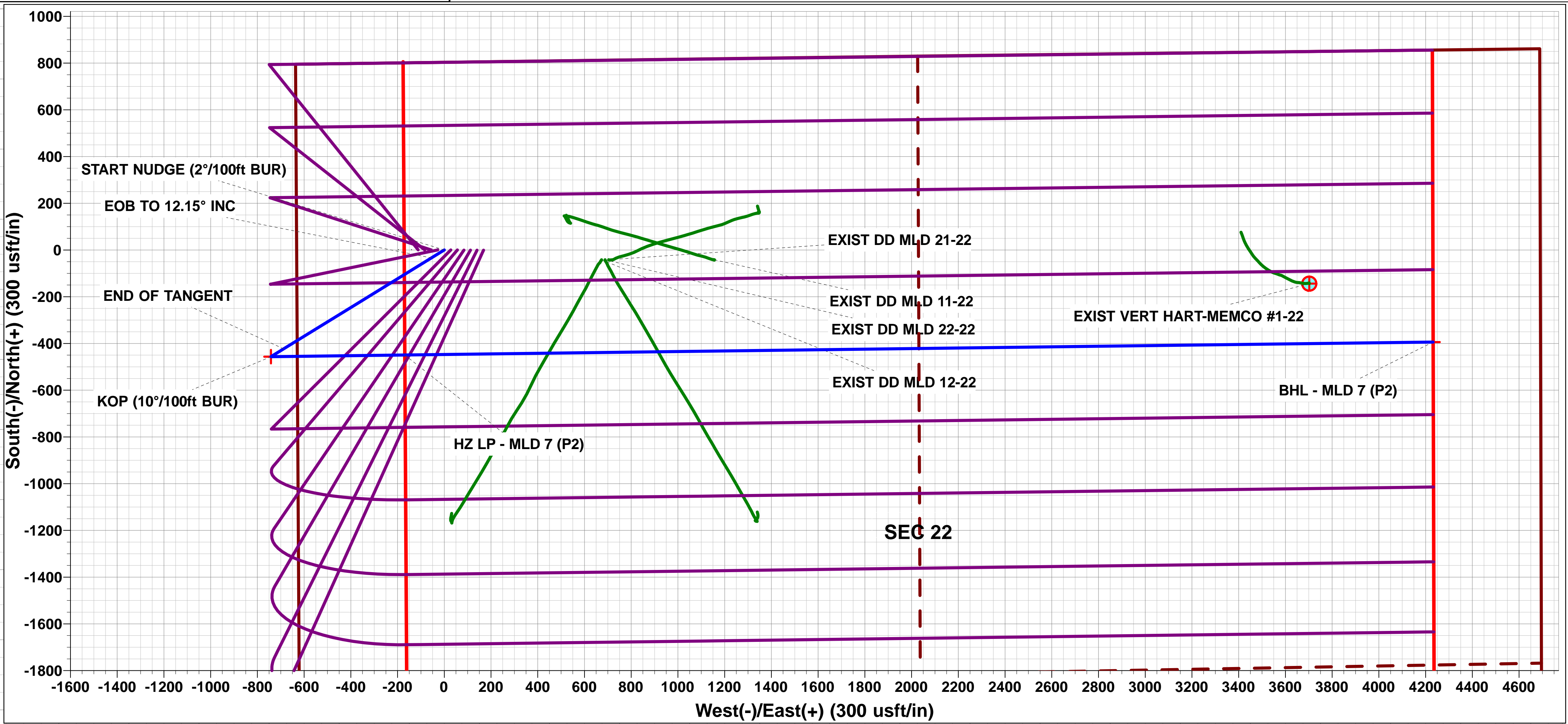
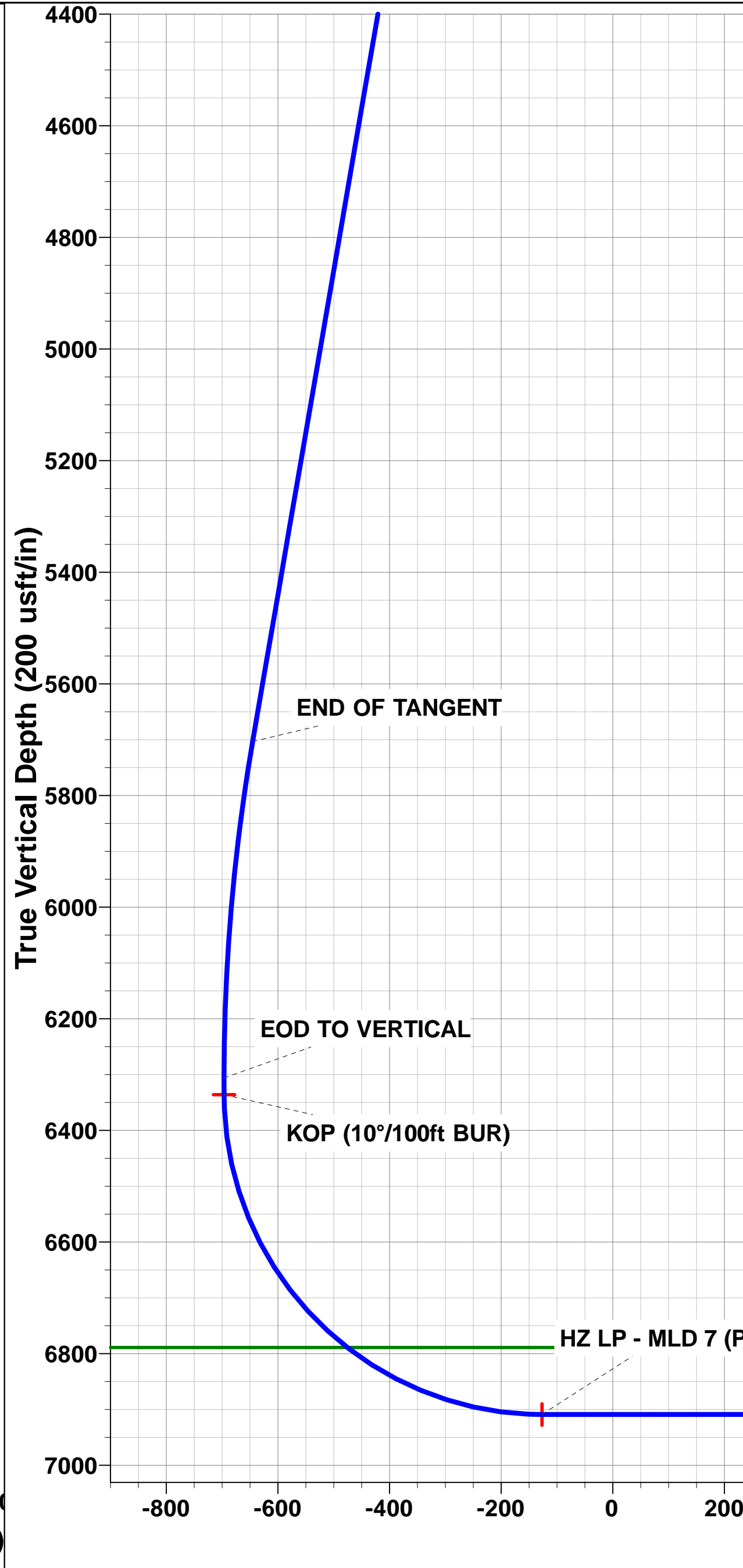
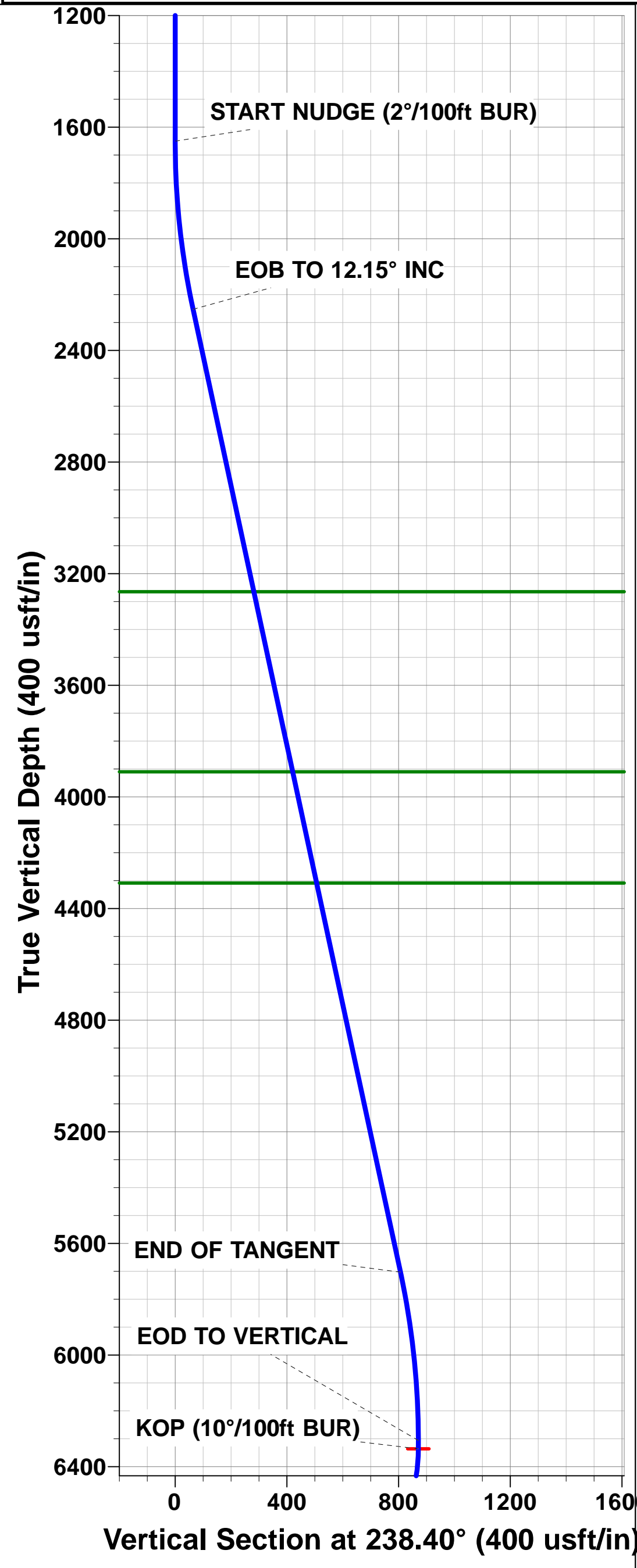
WELLBORE TARGET DETAILS (LAT/LONG)					
Name	TVD	+N/-S	+E/-W	Latitude	Longitude
KOP - MLD 7 (P2)	6336.1	-456.4	-741.9	40.302717	-104.999227
HZ LP - MLD 7 (P2)	6909.0	-449.2	-169.0	40.302737	-104.997173
BHL - MLD 7 (P2)	6909.0	-394.2	4231.8	40.302887	-104.981395



FORMATION TOP DETAILS		
TVDPath	MDPath	Formation
3265.0	3292.7	PARKMAN
3910.0	3952.5	SUSSEX
4309.0	4360.6	SHANNON
6789.0	6946.5	NIORRARA

Azimuths to True North  
Magnetic North: 8.33°

Magnetic Field  
Strength: 52322.3snT  
Dip Angle: 66.74°  
Date: 01/06/2017  
Model: IGRF2015



SETBACK BOUNDARY FALLS 460ft FE/WL of Sec 22

# Planning Report



<b>Database:</b>	EDM 5000.1 Single User Db	<b>Local Co-ordinate Reference:</b>	Well MLD 7
<b>Company:</b>	EXTRACTION OIL & GAS	<b>TVD Reference:</b>	KB-EST @ 4900.0usft (Original Well Elev)
<b>Project:</b>	WELD COUNTY, COLORADO (NAD 83)	<b>MD Reference:</b>	KB-EST @ 4900.0usft (Original Well Elev)
<b>Site:</b>	SW SW SEC. 22 T4N R68W 6th P.M.	<b>North Reference:</b>	True
<b>Well:</b>	MLD 7	<b>Survey Calculation Method:</b>	Minimum Curvature
<b>Wellbore:</b>	ORIGINAL WELLBORE		
<b>Design:</b>	PROPOSAL #2		

<b>Project</b>	WELD COUNTY, COLORADO (NAD 83)		
<b>Map System:</b>	US State Plane 1983	<b>System Datum:</b>	Mean Sea Level
<b>Geo Datum:</b>	North American Datum 1983		
<b>Map Zone:</b>	Colorado Northern Zone		Using geodetic scale factor

<b>Site</b>	SW SW SEC. 22 T4N R68W 6th P.M.		
<b>Site Position:</b>		<b>Northing:</b>	1,350,393.80 usft
<b>From:</b>	Lat/Long	<b>Easting:</b>	3,140,798.83 usft
<b>Position Uncertainty:</b>	0.0 usft	<b>Slot Radius:</b>	1.10000ft
		<b>Latitude:</b>	40.294131
		<b>Longitude:</b>	-104.995243
		<b>Grid Convergence:</b>	0.33 °

<b>Well</b>	MLD 7		
<b>Well Position</b>	<b>+N-S</b>	3,584.4 usft	<b>Northing:</b> 1,353,975.87 usfi
	<b>+E-W</b>	-369.3 usft	<b>Easting:</b> 3,140,409.16 usfi
<b>Position Uncertainty</b>	0.0 usft	<b>Wellhead Elevation:</b>	usfi
		<b>Latitude:</b>	40.303970
		<b>Longitude:</b>	-104.996567
		<b>Ground Level:</b>	4,876.0 usft

<b>Wellbore</b>	ORIGINAL WELLBORE				
<b>Magnetics</b>	<b>Model Name</b>	<b>Sample Date</b>	<b>Declination (°)</b>	<b>Dip Angle (°)</b>	<b>Field Strength (nT)</b>
	IGRF2015	01/06/2017	8.33	66.74	52,322

<b>Design</b>	PROPOSAL #2			
<b>Audit Notes:</b>				
<b>Version:</b>	<b>Phase:</b>	PROTOTYPE	<b>Tie On Depth:</b>	0.0
<b>Vertical Section:</b>	<b>Depth From (TVD) (usft)</b>	<b>+N-S (usft)</b>	<b>+E-W (usft)</b>	<b>Direction (°)</b>
	0.0	0.0	0.0	95.32

<b>Plan Sections</b>											
MD (usft)	Inc (°)	Azi (°)	Vertical Depth	SS (usft)	+N-S (usft)	+E-W (usft)	Dogleg Rate (°/100usf)	Build Rate (°/100usf)	Turn Rate (°/100usf)	TFO (°)	Target
0.0	0.00	0.00	0.0	-4,900.0	0.0	0.0	0.00	0.00	0.00	0.00	
1,650.0	0.00	0.00	1,650.0	-3,250.0	0.0	0.0	0.00	0.00	0.00	0.00	
2,257.4	12.15	238.40	2,252.9	-2,647.1	-33.6	-54.6	2.00	2.00	0.00	238.40	
5,786.8	12.15	238.40	5,703.2	803.2	-422.8	-687.3	0.00	0.00	0.00	0.00	
6,394.2	0.00	0.00	6,306.1	1,406.1	-456.4	-741.9	2.00	-2.00	0.00	180.00	
6,424.2	0.00	0.00	6,336.1	1,436.1	-456.4	-741.9	0.00	0.00	0.00	0.00	KOP - MLD 7 (P2)
7,324.1	90.00	89.28	6,909.0	2,009.0	-449.2	-169.0	10.00	10.00	9.92	89.28	HZ LP - MLD 7 (P2)
11,725.3	90.00	89.29	6,909.0	2,009.0	-394.2	4,231.8	0.00	0.00	0.00	104.75	BHL - MLD 7 (P2)

# Planning Report



<b>Database:</b>	EDM 5000.1 Single User Db	<b>Local Co-ordinate Reference:</b>	Well MLD 7
<b>Company:</b>	EXTRACTION OIL & GAS	<b>TVD Reference:</b>	KB-EST @ 4900.0usft (Original Well Elev)
<b>Project:</b>	WELD COUNTY, COLORADO (NAD 83)	<b>MD Reference:</b>	KB-EST @ 4900.0usft (Original Well Elev)
<b>Site:</b>	SW SW SEC. 22 T4N R68W 6th P.M.	<b>North Reference:</b>	True
<b>Well:</b>	MLD 7	<b>Survey Calculation Method:</b>	Minimum Curvature
<b>Wellbore:</b>	ORIGINAL WELLBORE		
<b>Design:</b>	PROPOSAL #2		

Planned Survey										
MD (usft)	Inc (°)	Azi (°)	TVD (usft)	SS (usft)	+N/-S (usft)	+E/-W (usft)	Vertical Section (usft)	Dogleg Rate (°/100usft)	Build Rate (°/100usft)	Turn Rate (°/100usft)
0.0	0.00	0.00	0.0	4,900.00	0.0	0.0	0.0	0.00	0.00	0.00
100.0	0.00	0.00	100.0	4,800.00	0.0	0.0	0.0	0.00	0.00	0.00
200.0	0.00	0.00	200.0	4,700.00	0.0	0.0	0.0	0.00	0.00	0.00
300.0	0.00	0.00	300.0	4,600.00	0.0	0.0	0.0	0.00	0.00	0.00
400.0	0.00	0.00	400.0	4,500.00	0.0	0.0	0.0	0.00	0.00	0.00
500.0	0.00	0.00	500.0	4,400.00	0.0	0.0	0.0	0.00	0.00	0.00
600.0	0.00	0.00	600.0	4,300.00	0.0	0.0	0.0	0.00	0.00	0.00
700.0	0.00	0.00	700.0	4,200.00	0.0	0.0	0.0	0.00	0.00	0.00
800.0	0.00	0.00	800.0	4,100.00	0.0	0.0	0.0	0.00	0.00	0.00
900.0	0.00	0.00	900.0	4,000.00	0.0	0.0	0.0	0.00	0.00	0.00
1,000.0	0.00	0.00	1,000.0	3,900.00	0.0	0.0	0.0	0.00	0.00	0.00
1,100.0	0.00	0.00	1,100.0	3,800.00	0.0	0.0	0.0	0.00	0.00	0.00
1,200.0	0.00	0.00	1,200.0	3,700.00	0.0	0.0	0.0	0.00	0.00	0.00
1,300.0	0.00	0.00	1,300.0	3,600.00	0.0	0.0	0.0	0.00	0.00	0.00
1,400.0	0.00	0.00	1,400.0	3,500.00	0.0	0.0	0.0	0.00	0.00	0.00
1,500.0	0.00	0.00	1,500.0	3,400.00	0.0	0.0	0.0	0.00	0.00	0.00
1,600.0	0.00	0.00	1,600.0	3,300.00	0.0	0.0	0.0	0.00	0.00	0.00
<b>START NUDGE (2°/100ft BUR)</b>										
1,650.0	0.00	0.00	1,650.0	3,250.00	0.0	0.0	0.0	0.00	0.00	0.00
1,700.0	1.00	238.40	1,700.0	3,200.00	-0.2	-0.4	-0.3	2.00	2.00	0.00
1,800.0	3.00	238.40	1,799.9	3,100.07	-2.1	-3.3	-3.1	2.00	2.00	0.00
1,900.0	5.00	238.40	1,899.7	3,000.32	-5.7	-9.3	-8.7	2.00	2.00	0.00
2,000.0	7.00	238.40	1,999.1	2,900.87	-11.2	-18.2	-17.1	2.00	2.00	0.00
2,100.0	9.00	238.40	2,098.2	2,801.85	-18.5	-30.0	-28.2	2.00	2.00	0.00
2,200.0	11.00	238.40	2,196.6	2,703.37	-27.6	-44.8	-42.1	2.00	2.00	0.00
<b>EOB TO 12.15° INC</b>										
2,257.4	12.15	238.40	2,252.9	2,647.14	-33.6	-54.6	-51.3	2.00	2.00	0.00
2,300.0	12.15	238.40	2,294.5	2,605.49	-38.3	-62.3	-58.5	0.00	0.00	0.00
2,400.0	12.15	238.40	2,392.3	2,507.73	-49.3	-80.2	-75.3	0.00	0.00	0.00
2,500.0	12.15	238.40	2,490.0	2,409.97	-60.4	-98.1	-92.1	0.00	0.00	0.00
2,600.0	12.15	238.40	2,587.8	2,312.21	-71.4	-116.0	-108.9	0.00	0.00	0.00
2,700.0	12.15	238.40	2,685.5	2,214.45	-82.4	-134.0	-125.8	0.00	0.00	0.00
2,800.0	12.15	238.40	2,783.3	2,116.69	-93.4	-151.9	-142.6	0.00	0.00	0.00
2,900.0	12.15	238.40	2,881.1	2,018.93	-104.5	-169.8	-159.4	0.00	0.00	0.00
3,000.0	12.15	238.40	2,978.8	1,921.17	-115.5	-187.7	-176.2	0.00	0.00	0.00
3,100.0	12.15	238.40	3,076.6	1,823.41	-126.5	-205.7	-193.0	0.00	0.00	0.00
3,200.0	12.15	238.40	3,174.4	1,725.65	-137.5	-223.6	-209.9	0.00	0.00	0.00
<b>PARKMAN</b>										
3,292.7	12.15	238.40	3,265.0	1,635.00	-147.8	-240.2	-225.5	0.00	0.00	0.00
3,300.0	12.15	238.40	3,272.1	1,627.89	-148.6	-241.5	-226.7	0.00	0.00	0.00
3,400.0	12.15	238.40	3,369.9	1,530.13	-159.6	-259.4	-243.5	0.00	0.00	0.00
3,500.0	12.15	238.40	3,467.6	1,432.37	-170.6	-277.4	-260.3	0.00	0.00	0.00
3,600.0	12.15	238.40	3,565.4	1,334.61	-181.7	-295.3	-277.2	0.00	0.00	0.00
3,700.0	12.15	238.40	3,663.2	1,236.85	-192.7	-313.2	-294.0	0.00	0.00	0.00
3,800.0	12.15	238.40	3,760.9	1,139.09	-203.7	-331.1	-310.8	0.00	0.00	0.00
3,900.0	12.15	238.40	3,858.7	1,041.32	-214.7	-349.1	-327.6	0.00	0.00	0.00
<b>SUSSEX</b>										
3,952.5	12.15	238.40	3,910.0	990.00	-220.5	-358.5	-336.5	0.00	0.00	0.00
4,000.0	12.15	238.40	3,956.4	943.56	-225.8	-367.0	-344.5	0.00	0.00	0.00
4,100.0	12.15	238.40	4,054.2	845.80	-236.8	-384.9	-361.3	0.00	0.00	0.00
4,200.0	12.15	238.40	4,152.0	748.04	-247.8	-402.8	-378.1	0.00	0.00	0.00
4,300.0	12.15	238.40	4,249.7	650.28	-258.8	-420.8	-394.9	0.00	0.00	0.00
<b>SHANNON</b>										
4,360.6	12.15	238.40	4,309.0	591.00	-265.5	-431.6	-405.1	0.00	0.00	0.00

# Planning Report



<b>Database:</b>	EDM 5000.1 Single User Db	<b>Local Co-ordinate Reference:</b>	Well MLD 7
<b>Company:</b>	EXTRACTION OIL & GAS	<b>TVD Reference:</b>	KB-EST @ 4900.0usft (Original Well Elev)
<b>Project:</b>	WELD COUNTY, COLORADO (NAD 83)	<b>MD Reference:</b>	KB-EST @ 4900.0usft (Original Well Elev)
<b>Site:</b>	SW SW SEC. 22 T4N R68W 6th P.M.	<b>North Reference:</b>	True
<b>Well:</b>	MLD 7	<b>Survey Calculation Method:</b>	Minimum Curvature
<b>Wellbore:</b>	ORIGINAL WELLBORE		
<b>Design:</b>	PROPOSAL #2		

## Planned Survey

MD (usft)	Inc (°)	Azi (°)	TVD (usft)	SS (usft)	+N/-S (usft)	+E/-W (usft)	Vertical Section (usft)	Dogleg Rate (°/100usft)	Build Rate (°/100usft)	Turn Rate (°/100usft)
4,400.0	12.15	238.40	4,347.5	552.52	-269.9	-438.7	-411.8	0.00	0.00	0.00
4,500.0	12.15	238.40	4,445.2	454.76	-280.9	-456.6	-428.6	0.00	0.00	0.00
4,600.0	12.15	238.40	4,543.0	357.00	-291.9	-474.5	-445.4	0.00	0.00	0.00
4,700.0	12.15	238.40	4,640.8	259.24	-302.9	-492.5	-462.2	0.00	0.00	0.00
4,800.0	12.15	238.40	4,738.5	161.48	-314.0	-510.4	-479.1	0.00	0.00	0.00
4,900.0	12.15	238.40	4,836.3	63.72	-325.0	-528.3	-495.9	0.00	0.00	0.00
5,000.0	12.15	238.40	4,934.0	-34.04	-336.0	-546.2	-512.7	0.00	0.00	0.00
5,100.0	12.15	238.40	5,031.8	-131.80	-347.1	-564.2	-529.5	0.00	0.00	0.00
5,200.0	12.15	238.40	5,129.6	-229.56	-358.1	-582.1	-546.4	0.00	0.00	0.00
5,300.0	12.15	238.40	5,227.3	-327.32	-369.1	-600.0	-563.2	0.00	0.00	0.00
5,400.0	12.15	238.40	5,325.1	-425.08	-380.1	-617.9	-580.0	0.00	0.00	0.00
5,500.0	12.15	238.40	5,422.8	-522.84	-391.2	-635.9	-596.8	0.00	0.00	0.00
5,600.0	12.15	238.40	5,520.6	-620.61	-402.2	-653.8	-613.7	0.00	0.00	0.00
5,700.0	12.15	238.40	5,618.4	-718.37	-413.2	-671.7	-630.5	0.00	0.00	0.00
<b>END OF TANGENT</b>										
<b>5,786.8</b>	<b>12.15</b>	<b>238.40</b>	<b>5,703.2</b>	<b>-803.22</b>	<b>-422.8</b>	<b>-687.3</b>	<b>-645.1</b>	<b>0.00</b>	<b>0.00</b>	<b>0.00</b>
5,800.0	11.88	238.40	5,716.1	-816.13	-424.2	-689.6	-647.3	2.00	-2.00	0.00
5,900.0	9.88	238.40	5,814.3	-914.33	-434.1	-705.7	-662.4	2.00	-2.00	0.00
6,000.0	7.88	238.40	5,913.1	-1,013.12	-442.2	-718.8	-674.7	2.00	-2.00	0.00
6,100.0	5.88	238.40	6,012.4	-1,112.40	-448.5	-729.0	-684.3	2.00	-2.00	0.00
6,200.0	3.88	238.40	6,112.0	-1,212.03	-453.0	-736.3	-691.1	2.00	-2.00	0.00
6,300.0	1.88	238.40	6,211.9	-1,311.90	-455.6	-740.6	-695.1	2.00	-2.00	0.00
<b>EOD TO VERTICAL</b>										
<b>6,394.2</b>	<b>0.00</b>	<b>238.40</b>	<b>6,306.1</b>	<b>-1,406.08</b>	<b>-456.4</b>	<b>-741.9</b>	<b>-696.4</b>	<b>2.00</b>	<b>-2.00</b>	<b>0.00</b>
6,400.0	0.00	0.00	6,311.9	-1,411.88	-456.4	-741.9	-696.4	0.01	-0.01	0.00
<b>KOP (10°/100ft BUR)</b>										
<b>6,424.2</b>	<b>0.00</b>	<b>0.00</b>	<b>6,336.1</b>	<b>-1,436.08</b>	<b>-456.4</b>	<b>-741.9</b>	<b>-696.4</b>	<b>0.00</b>	<b>0.00</b>	<b>0.00</b>
6,500.0	7.58	89.28	6,411.7	-1,511.66	-456.3	-736.9	-691.4	10.00	10.00	0.00
6,600.0	17.58	89.28	6,509.1	-1,609.14	-456.1	-715.1	-669.8	10.00	10.00	0.00
6,700.0	27.58	89.28	6,601.4	-1,701.35	-455.6	-676.8	-631.6	10.00	10.00	0.00
6,800.0	37.58	89.28	6,685.5	-1,785.51	-454.9	-623.0	-578.1	10.00	10.00	0.00
6,900.0	47.58	89.28	6,759.0	-1,859.05	-454.0	-555.4	-510.9	10.00	10.00	0.00
<b>NIORARA</b>										
<b>6,946.5</b>	<b>52.24</b>	<b>89.28</b>	<b>6,789.0</b>	<b>-1,889.00</b>	<b>-453.6</b>	<b>-519.9</b>	<b>-475.6</b>	<b>10.00</b>	<b>10.00</b>	<b>0.00</b>
7,000.0	57.58	89.28	6,819.7	-1,919.73	-453.0	-476.1	-432.1	10.00	10.00	0.00
7,100.0	67.58	89.28	6,865.7	-1,965.72	-451.9	-387.5	-343.9	10.00	10.00	0.00
7,200.0	77.59	89.28	6,895.6	-1,995.61	-450.7	-292.2	-249.1	10.00	10.00	0.00
7,300.0	87.59	89.28	6,908.5	-2,008.49	-449.5	-193.2	-150.6	10.00	10.00	0.00
<b>HZ LP - MLD 7 (P2)</b>										
<b>7,324.1</b>	<b>90.00</b>	<b>89.28</b>	<b>6,909.0</b>	<b>-2,009.00</b>	<b>-449.2</b>	<b>-169.1</b>	<b>-126.7</b>	<b>10.00</b>	<b>10.00</b>	<b>0.00</b>
7,400.0	90.00	89.28	6,909.0	-2,009.00	-448.2	-93.2	-51.2	0.01	0.01	0.00
7,500.0	90.00	89.28	6,909.0	-2,008.99	-446.9	6.8	48.2	0.00	0.00	0.00
7,600.0	90.00	89.28	6,909.0	-2,008.99	-445.7	106.8	147.7	0.00	0.00	0.00
7,700.0	90.00	89.28	6,909.0	-2,008.99	-444.4	206.8	247.1	0.00	0.00	0.00
7,800.0	90.00	89.28	6,909.0	-2,008.99	-443.2	306.8	346.6	0.00	0.00	0.00
7,900.0	90.00	89.28	6,909.0	-2,008.98	-441.9	406.8	446.0	0.00	0.00	0.00
8,000.0	90.00	89.28	6,909.0	-2,008.98	-440.6	506.8	545.5	0.00	0.00	0.00
8,100.0	90.00	89.28	6,909.0	-2,008.98	-439.4	606.8	644.9	0.00	0.00	0.00
8,200.0	90.00	89.28	6,909.0	-2,008.98	-438.1	706.8	744.3	0.00	0.00	0.00
8,300.0	90.00	89.28	6,909.0	-2,008.97	-436.9	806.7	843.8	0.00	0.00	0.00
8,400.0	90.00	89.28	6,909.0	-2,008.97	-435.6	906.7	943.2	0.00	0.00	0.00
8,500.0	90.00	89.28	6,909.0	-2,008.97	-434.4	1,006.7	1,042.7	0.00	0.00	0.00
8,600.0	90.00	89.28	6,909.0	-2,008.97	-433.1	1,106.7	1,142.1	0.00	0.00	0.00



# Planning Report



<b>Database:</b>	EDM 5000.1 Single User Db	<b>Local Co-ordinate Reference:</b>	Well MLD 7
<b>Company:</b>	EXTRACTION OIL & GAS	<b>TVD Reference:</b>	KB-EST @ 4900.0usft (Original Well Elev)
<b>Project:</b>	WELD COUNTY, COLORADO (NAD 83)	<b>MD Reference:</b>	KB-EST @ 4900.0usft (Original Well Elev)
<b>Site:</b>	SW SW SEC. 22 T4N R68W 6th P.M.	<b>North Reference:</b>	True
<b>Well:</b>	MLD 7	<b>Survey Calculation Method:</b>	Minimum Curvature
<b>Wellbore:</b>	ORIGINAL WELLBORE		
<b>Design:</b>	PROPOSAL #2		

Planned Survey										
MD (usft)	Inc (°)	Azi (°)	TVD (usft)	SS (usft)	+N/-S (usft)	+E/-W (usft)	Vertical Section (usft)	Dogleg Rate (°/100usft)	Build Rate (°/100usft)	Turn Rate (°/100usft)
8,700.0	90.00	89.28	6,909.0	-2,008.97	-431.9	1,206.7	1,241.6	0.00	0.00	0.00
8,800.0	90.00	89.28	6,909.0	-2,008.97	-430.6	1,306.7	1,341.0	0.00	0.00	0.00
8,900.0	90.00	89.28	6,909.0	-2,008.97	-429.3	1,406.7	1,440.5	0.00	0.00	0.00
9,000.0	90.00	89.28	6,909.0	-2,008.97	-428.1	1,506.7	1,539.9	0.00	0.00	0.00
9,100.0	90.00	89.28	6,909.0	-2,008.96	-426.8	1,606.7	1,639.3	0.00	0.00	0.00
9,200.0	90.00	89.28	6,909.0	-2,008.96	-425.6	1,706.7	1,738.8	0.00	0.00	0.00
9,300.0	90.00	89.28	6,909.0	-2,008.96	-424.3	1,806.7	1,838.2	0.00	0.00	0.00
9,400.0	90.00	89.28	6,909.0	-2,008.96	-423.1	1,906.7	1,937.7	0.00	0.00	0.00
9,500.0	90.00	89.28	6,909.0	-2,008.96	-421.8	2,006.7	2,037.1	0.00	0.00	0.00
9,600.0	90.00	89.28	6,909.0	-2,008.96	-420.6	2,106.6	2,136.6	0.00	0.00	0.00
9,700.0	90.00	89.28	6,909.0	-2,008.96	-419.3	2,206.6	2,236.0	0.00	0.00	0.00
9,800.0	90.00	89.28	6,909.0	-2,008.96	-418.1	2,306.6	2,335.5	0.00	0.00	0.00
9,900.0	90.00	89.29	6,909.0	-2,008.96	-416.8	2,406.6	2,434.9	0.00	0.00	0.00
10,000.0	90.00	89.29	6,909.0	-2,008.97	-415.6	2,506.6	2,534.4	0.00	0.00	0.00
10,100.0	90.00	89.29	6,909.0	-2,008.97	-414.3	2,606.6	2,633.8	0.00	0.00	0.00
10,200.0	90.00	89.29	6,909.0	-2,008.97	-413.1	2,706.6	2,733.2	0.00	0.00	0.00
10,300.0	90.00	89.29	6,909.0	-2,008.97	-411.9	2,806.6	2,832.7	0.00	0.00	0.00
10,400.0	90.00	89.29	6,909.0	-2,008.97	-410.6	2,906.6	2,932.1	0.00	0.00	0.00
10,500.0	90.00	89.29	6,909.0	-2,008.97	-409.4	3,006.6	3,031.6	0.00	0.00	0.00
10,600.0	90.00	89.29	6,909.0	-2,008.97	-408.1	3,106.6	3,131.0	0.00	0.00	0.00
10,700.0	90.00	89.29	6,909.0	-2,008.97	-406.9	3,206.6	3,230.5	0.00	0.00	0.00
10,800.0	90.00	89.29	6,909.0	-2,008.98	-405.6	3,306.6	3,329.9	0.00	0.00	0.00
10,900.0	90.00	89.29	6,909.0	-2,008.98	-404.4	3,406.5	3,429.4	0.00	0.00	0.00
11,000.0	90.00	89.29	6,909.0	-2,008.98	-403.1	3,506.5	3,528.8	0.00	0.00	0.00
11,100.0	90.00	89.29	6,909.0	-2,008.98	-401.9	3,606.5	3,628.3	0.00	0.00	0.00
11,200.0	90.00	89.29	6,909.0	-2,008.98	-400.7	3,706.5	3,727.7	0.00	0.00	0.00
11,300.0	90.00	89.29	6,909.0	-2,008.99	-399.4	3,806.5	3,827.2	0.00	0.00	0.00
11,400.0	90.00	89.29	6,909.0	-2,008.99	-398.2	3,906.5	3,926.6	0.00	0.00	0.00
11,500.0	90.00	89.29	6,909.0	-2,008.99	-396.9	4,006.5	4,026.0	0.00	0.00	0.00
11,600.0	90.00	89.29	6,909.0	-2,009.00	-395.7	4,106.5	4,125.5	0.00	0.00	0.00
11,700.0	90.00	89.29	6,909.0	-2,009.00	-394.5	4,206.5	4,224.9	0.00	0.00	0.00
<b>BHL - MLD 7 (P2)</b>										
<b>11,725.3</b>	<b>90.00</b>	<b>89.29</b>	<b>6,909.0</b>	<b>-2,009.00</b>	<b>-394.2</b>	<b>4,231.8</b>	<b>4,250.1</b>	<b>0.00</b>	<b>0.00</b>	<b>0.00</b>

Formations						
MD (usft)	TVD (usft)	Name	Lithology	Dip (°)	Dip Direction (°)	
3,292.7	3,265.0	PARKMAN		0.00		
3,952.5	3,910.0	SUSSEX		0.00		
4,360.6	4,309.0	SHANNON		0.00		
6,946.5	6,789.0	NIOBRARA		0.00		

<b>Database:</b>	EDM 5000.1 Single User Db	<b>Local Co-ordinate Reference:</b>	Well MLD 7
<b>Company:</b>	EXTRACTION OIL & GAS	<b>TVD Reference:</b>	KB-EST @ 4900.0usft (Original Well Elev)
<b>Project:</b>	WELD COUNTY, COLORADO (NAD 83)	<b>MD Reference:</b>	KB-EST @ 4900.0usft (Original Well Elev)
<b>Site:</b>	SW SW SEC. 22 T4N R68W 6th P.M.	<b>North Reference:</b>	True
<b>Well:</b>	MLD 7	<b>Survey Calculation Method:</b>	Minimum Curvature
<b>Wellbore:</b>	ORIGINAL WELLBORE		
<b>Design:</b>	PROPOSAL #2		

## Plan Annotations

MD (usft)	TVD (usft)	Local Coordinates		Comment
		+N/-S (usft)	+E/-W (usft)	
1,650.0	1,650.0	0.0	0.0	START NUDGE (2°/100ft BUR)
2,257.4	2,252.9	-33.6	-54.6	EOB TO 12.15° INC
5,786.8	5,703.2	-422.8	-687.3	END OF TANGENT
6,394.2	6,306.1	-456.4	-741.9	EOD TO VERTICAL
6,424.2	6,336.1	-456.4	-741.9	KOP (10°/100ft BUR)
7,324.1	6,909.0	-449.2	-169.1	HZ LP - MLD 7 (P2)
11,725.3	6,909.0	-394.2	4,231.8	BHL - MLD 7 (P2)