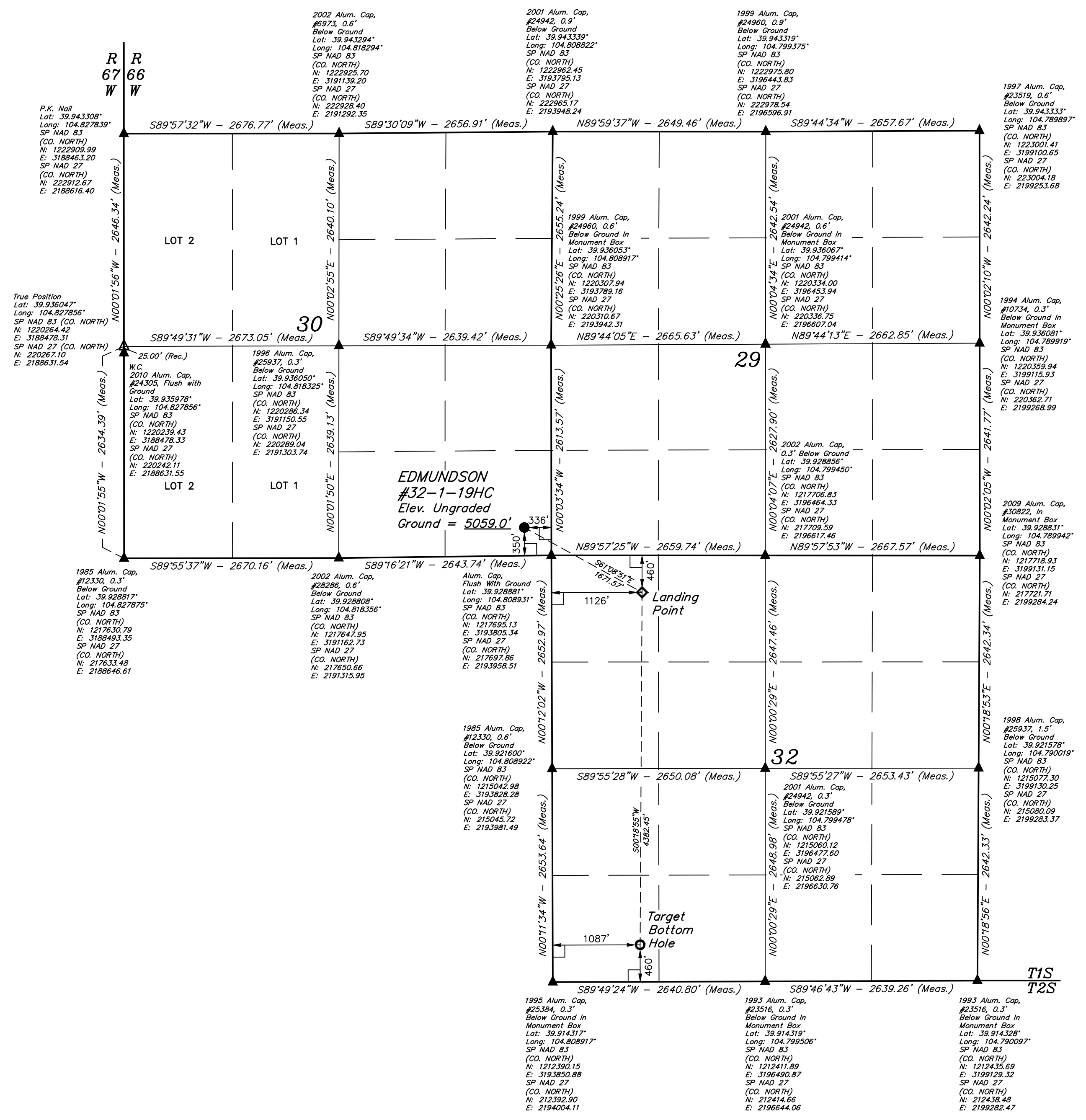


- LEGEND:**
- ◻ = 90° SYMBOL
 - = PROPOSED WELLHEAD
 - = TARGET BOTTOM HOLE
 - ◆ = LANDING POINT
 - ▲ = SECTION CORNERS LOCATED, (NAD 83)
 - △ = SECTION CORNERS RE-ESTABLISHED, (Not Set on Ground.) (NAD 83)

T1S, R66W, 6th P.M.



NAD 83 (SURFACE LOCATION)	NAD 83 (LANDING POINT)	NAD 83 (TARGET BOTTOM HOLE)
LATITUDE = 39°55'47.39" (39.929831)	LATITUDE = 39°55'39.39" (39.927608)	LATITUDE = 39°54'56.09" (39.915581)
LONGITUDE = 104°48'36.46" (104.810128)	LONGITUDE = 104°48'17.70" (104.804917)	LONGITUDE = 104°48'18.16" (104.805044)
NAD 27 (SURFACE LOCATION)	NAD 27 (LANDING POINT)	NAD 27 (TARGET BOTTOM HOLE)
LATITUDE = 39°55'47.45" (39.929847)	LATITUDE = 39°55'39.44" (39.927622)	LATITUDE = 39°54'56.14" (39.915594)
LONGITUDE = 104°48'34.56" (104.809600)	LONGITUDE = 104°48'15.79" (104.804386)	LONGITUDE = 104°48'16.25" (104.804514)
STATE PLANE NAD 83 (CO. NORTH)	STATE PLANE NAD 83 (CO. NORTH)	STATE PLANE NAD 83 (CO. NORTH)
N: 1218039.08 E: 3193467.31	N: 1217240.22 E: 3194935.12	N: 1212858.96 E: 3194933.60
STATE PLANE NAD 27 (CO. NORTH)	STATE PLANE NAD 27 (CO. NORTH)	STATE PLANE NAD 27 (CO. NORTH)
N: 218041.81 E: 2193620.48	N: 217242.97 E: 2195088.28	N: 212861.72 E: 2195086.81

BASIS OF BEARINGS
BASIS OF BEARINGS IS A G.P.S. OBSERVATION

BASIS OF ELEVATION
USGS COOPERATIVE BASE NETWORK CONTROL STATION, DESIGNATION "JR 53 5026". NGS DATA SHEET LISTS THE NAVD 88 ELEVATION AS BEING 5028 FEET.

UELTS, LLC
Corporate Office * 85 South 200 East
Vernal, UT 84078 * (435) 789-1017

CERTIFICATE OF REGISTRATION
THIS IS TO CERTIFY THAT THE ABOVE SURVEY WAS MADE IN ACCORDANCE WITH THE PROVISIONS OF THE SURVEYING ACT AND THAT THE SAME ARE TRUE AND CORRECT TO THE BEST OF MY KNOWLEDGE AND BELIEF.

[Signature]
REGISTERED LAND SURVEYOR
REGISTRATION NO. 28285
STATE OF COLORADO

WARD PETROLEUM CORPORATION
EDMUNDSON #32-1-19HC
SE 1/4 SE 1/4, SECTION 30, T1S, R66W, 6th P.M.
ADAMS COUNTY, COLORADO

SURVEYED BY: GREG WEIMER, J.C. 03-28-17 SCALE: 1" = 1000'
DRAWN BY: D. COX 04-03-17

WELL LOCATION PLAT