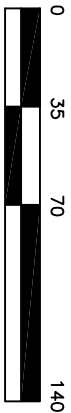


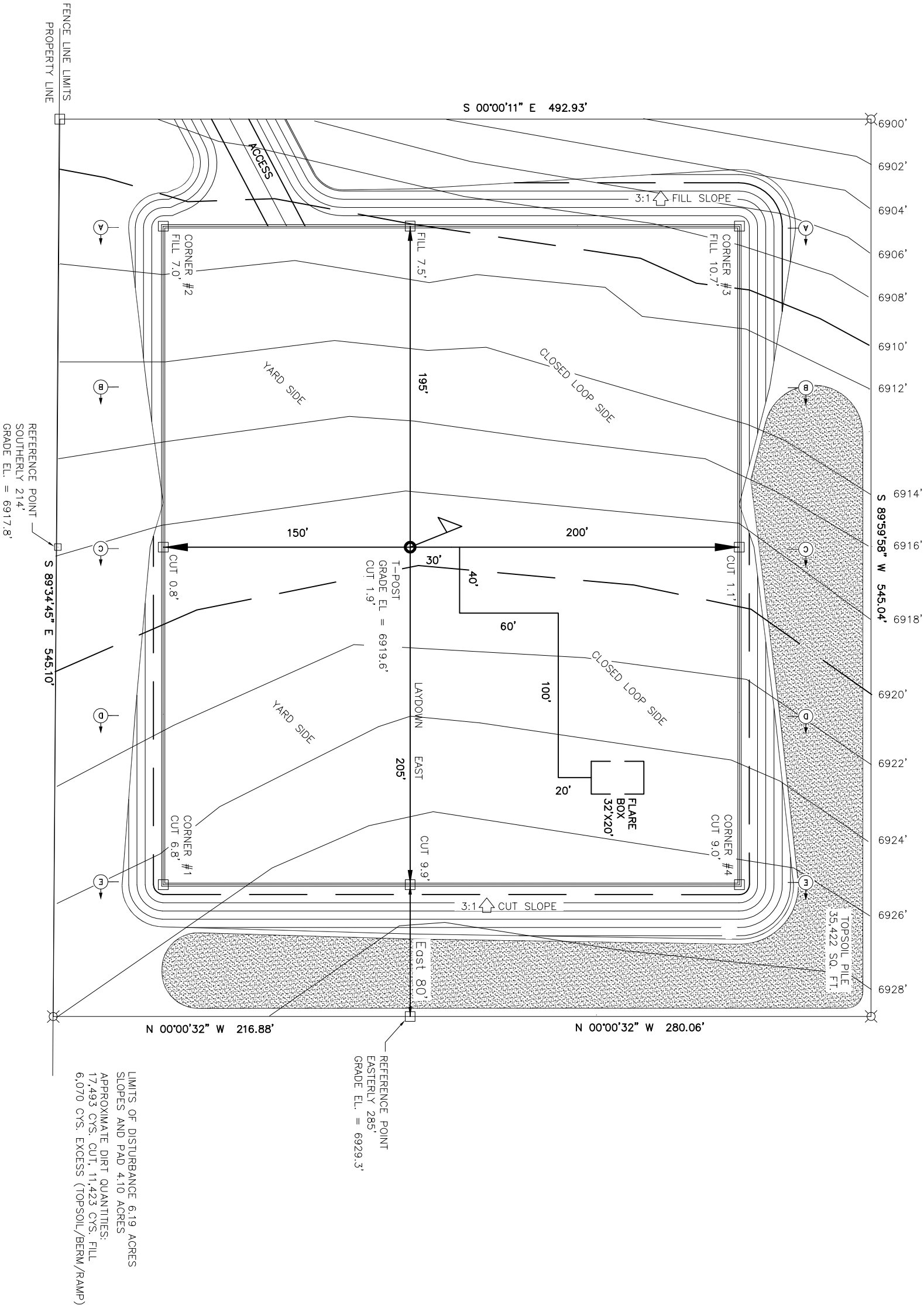


PLANT



DWG. SCALE IS BASED ON AN
11"x17" SHEET SIZE

- LEGEND
- T-POST LOCATION
 - LATH/PIN FLAG
 - U-POST/LATH
 - RIG ANCHOR
 - 6" SLIDE VALVE
 - CULVERTS
 - DIVERSION DITCH



PLAN
SCALE 1"=70'

NOTES:

INFORMATION BASED ON A SURVEY OR
SURVEYS ON THE GROUND PROVIDED BY:
HUDDLESTON LAND SURVEYING
P.O. BOX KK – CORTEZ, CO. 81321
(970) 565-3330

REVISIONS

NO.	DATE	BY	REVISIONS
1	5/2/17	GEG	ISSUED FOR PERMIT

KINDER MORGAN
CO₂ COMPANY, L.P.

DATE: MAY 9, 2017
DRAWN BY: GEG
CHECKED BY: GEG
SITE LOCATION:

CO₂ WELL PAD SITE PLAN
DOE CANYON DC-27 WELL PAD
EXISTING AND DESIGN CONTOURS

DRAWN BY:	5/2/17	REVIEWED BY:	SCALE: AS NOTED
CHECKED BY:	GEG	APPROVED BY:	DRAWING NUMBER

MONTICZUMA COUNTY, COLORADO
WP-DC-27-PERM-001

LIMITS OF DISTURBANCE 6.19 ACRES
SLOPES AND PAD 4.10 ACRES
APPROXIMATE DIRT QUANTITIES:
17,493 CYS. CUT, 11,423 CYS. FILL
6,070 CYS. EXCESS (TOPSOIL/BERM/RAMP)