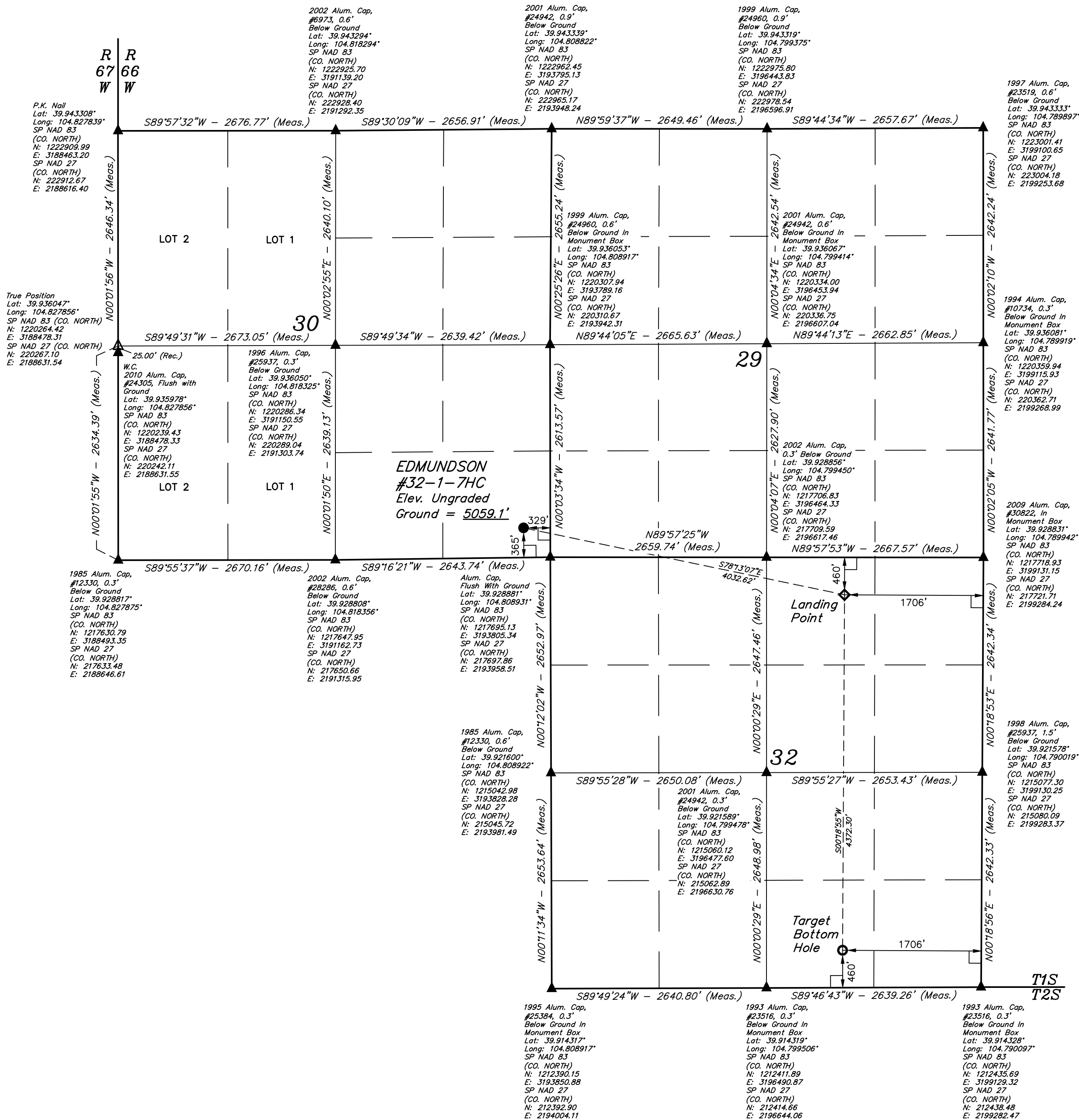


LEGEND:

- └ = 90° SYMBOL
● = PROPOSED WELLHEAD.
○ = TARGET BOTTOM HOLE.
◆ = LANDING POINT.
▲ = SECTION CORNERS LOCATED, (NAD 83)
△ = SECTION CORNERS RE-ESTABLISHED, (Not Set on Ground.) (NAD 83)

T1S, R66W, 6th P.M.



PDOP = 1.3



NAD 83 (SURFACE LOCATION)	NAD 83 (LANDING POINT)	NAD 83 (TARGET BOTTOM HOLE)
LATITUDE = 39°55'47.54" (39.929872)	LATITUDE = 39°55'39.30" (39.927583)	LATITUDE = 39°54'56.11" (39.915586)
LONGITUDE = 104°48'36.36" (104.810100)	LONGITUDE = 104°47'45.73" (104.796036)	LONGITUDE = 104°47'46.19" (104.796164)
NAD 27 (SURFACE LOCATION)	NAD 27 (LANDING POINT)	NAD 27 (TARGET BOTTOM HOLE)
LATITUDE = 39°55'47.60" (39.929889)	LATITUDE = 39°55'39.36" (39.927600)	LATITUDE = 39°54'56.16" (39.915600)
LONGITUDE = 104°48'34.46" (104.809572)	LONGITUDE = 104°47'43.83" (104.795508)	LONGITUDE = 104°47'44.29" (104.795636)
STATE PLANE NAD 83 (CO. NORTH)	STATE PLANE NAD 83 (CO. NORTH)	STATE PLANE NAD 83 (CO. NORTH)
N: 1218054.12 E: 3193474.67	N: 1217251.31 E: 3197425.45	N: 1212880.20 E: 3197423.93
STATE PLANE NAD 27 (CO. NORTH)	STATE PLANE NAD 27 (CO. NORTH)	STATE PLANE NAD 27 (CO. NORTH)
N: 218056.85 E: 2193627.84	N: 217254.08 E: 2197578.57	N: 212882.98 E: 2197577.11

BASIS OF BEARINGS

BASIS OF BEARINGS IS A G.P.S. OBSERVATION

USGS COOPERATIVE BASE NETWORK CONTROL STATION, DESIGNATION "JR 53 5026". NGS DATA SHEET LISTS THE NAVD 88 ELEVATION AS BEING 5028 FEET.

UELS, LLC

Corporate Office * 85 South 200 East
Vernal, UT 84078 * (435) 789-1017



WARD PETROLEUM CORPORATION

EDMUNDSON #32-1-7HC
SE 1/4 SE 1/4, SECTION 30, T1S, R66W, 6th P.M.
ADAMS COUNTY, COLORADO

SURVEYED BY	GREG WEIMER, J.C.	03-28-17	SCALE
DRAWN BY	D.COX	04-03-17	1" = 1000'

WELL LOCATION PLAT

CERTIFICATE OF REGISTRATION
THIS IS TO CERTIFY THAT THE ABOVE NOTED SURVEY WAS MADE BY A LICENSED SURVEYOR AND THAT THE SAME ARE TRUE AND CORRECT TO THE BEST OF HIS KNOWLEDGE AND BELIEF.

REGISTRATION NO. 28285

STATE OF COLORADO