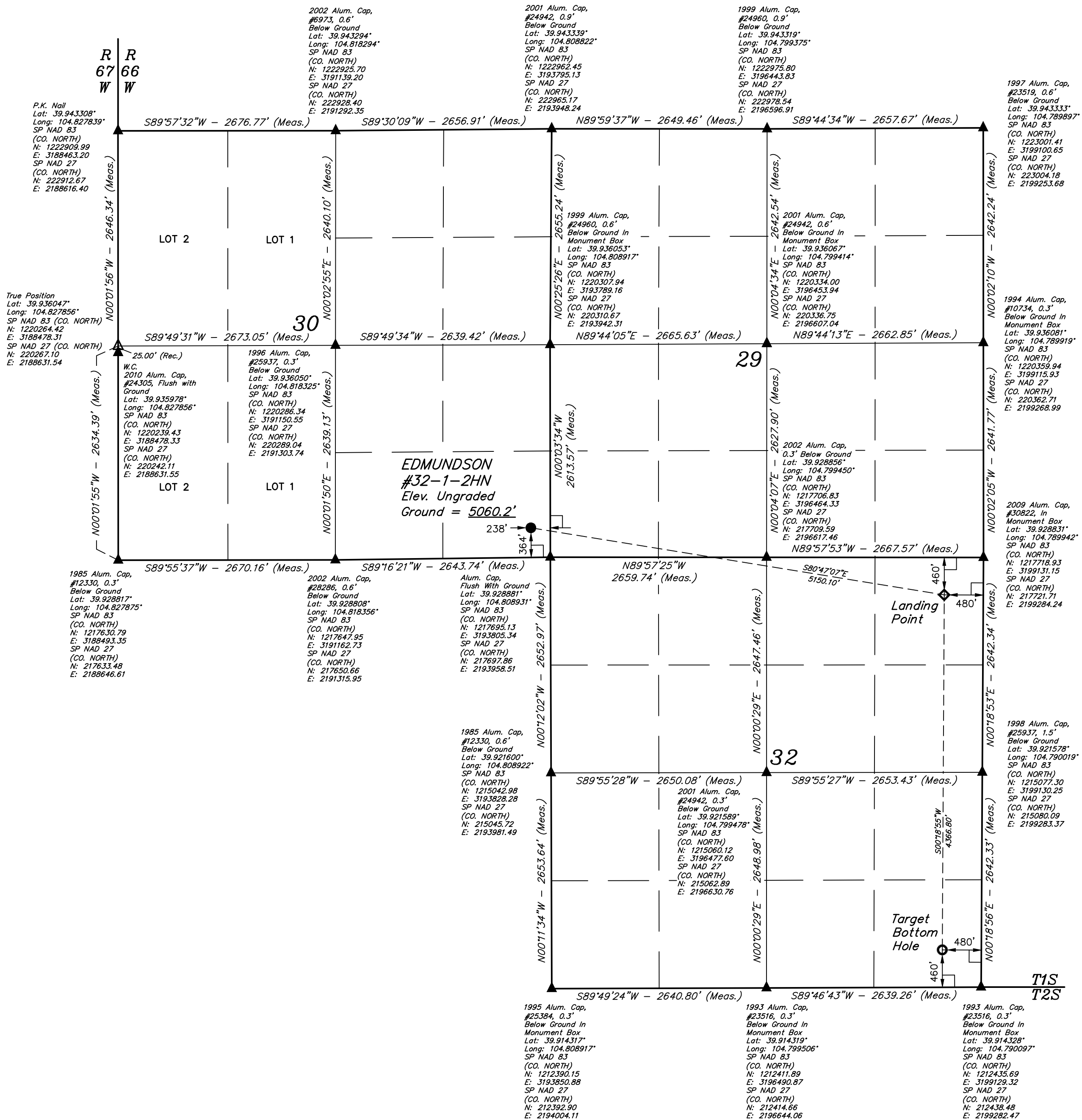


LEGEND:

- └ = 90° SYMBOL
● = PROPOSED WELLHEAD.
○ = TARGET BOTTOM HOLE.
◆ = LANDING POINT.
▲ = SECTION CORNERS LOCATED. (NAD 83)
△ = SECTION CORNERS RE-ESTABLISHED. (Not Set on Ground.) (NAD 83)

T1S, R66W, 6th P.M.



PDOP = 1.9



NAD 83 (SURFACE LOCATION)	NAD 83 (LANDING POINT)	NAD 83 (TARGET BOTTOM HOLE)
LATITUDE = 39°55'47.55" (39.929875)	LATITUDE = 39°55'39.26" (39.927572)	LATITUDE = 39°54'56.12" (39.915589)
LONGITUDE = 104°48'35.21" (104.809781)	LONGITUDE = 104°47'30.00" (104.791667)	LONGITUDE = 104°47'30.46" (104.791794)
NAD 27 (SURFACE LOCATION)	NAD 27 (LANDING POINT)	NAD 27 (TARGET BOTTOM HOLE)
LATITUDE = 39°55'47.60" (39.929889)	LATITUDE = 39°55'39.32" (39.927589)	LATITUDE = 39°54'56.17" (39.915603)
LONGITUDE = 104°48'33.30" (104.809250)	LONGITUDE = 104°47'28.10" (104.791139)	LONGITUDE = 104°47'28.56" (104.791267)
STATE PLANE NAD 83 (CO. NORTH)	STATE PLANE NAD 83 (CO. NORTH)	STATE PLANE NAD 83 (CO. NORTH)
N: 1218055.17 E: 3193564.68	N: 1217256.87 E: 3198651.12	N: 1212891.25 E: 3198649.61
STATE PLANE NAD 27 (CO. NORTH)	STATE PLANE NAD 27 (CO. NORTH)	STATE PLANE NAD 27 (CO. NORTH)
N: 218057.90 E: 2193717.85	N: 217259.65 E: 2198804.22	N: 212894.04 E: 2198802.76

BASIS OF BEARINGS

BASIS OF BEARINGS IS A G.P.S. OBSERVATION

BASIS OF ELEVATION

USGS COOPERATIVE BASE NETWORK CONTROL STATION.
DESIGNATION "JR 53 5026". NGS DATA SHEET LISTS THE NAVD 88
ELEVATION AS BEING 5028 FEET.

UELS, LLC

Corporate Office * 85 South 200 East
Vernal, UT 84078 * (435) 789-1017



WARD PETROLEUM CORPORATION

EDMUNDSON #32-1-2HN
SE 1/4 SE 1/4, SECTION 30, T1S, R66W, 6th P.M.
ADAMS COUNTY, COLORADO

SURVEYED BY	GREG WEIMER, J.C.	03-28-17	SCALE
DRAWN BY	D.COX	04-03-17	1" = 1000'

WELL LOCATION PLAT

CERTIFICATE OF RECORD
THIS IS TO CERTIFY THAT THE ABOVE INFORMATION IS A TRUE AND CORRECT COPY OF THE ORIGINAL SURVEY RECORD AS FILED IN THE PUBLIC RECORDS OF ADAMS COUNTY, COLORADO, AND THAT THE SAME ARE TRUE AND CORRECT TO THE BEST OF MY KNOWLEDGE AND BELIEF.

RECORDED LAND SURVEYOR
REGISTRATION NO. 28285
STATE OF COLORADO

17