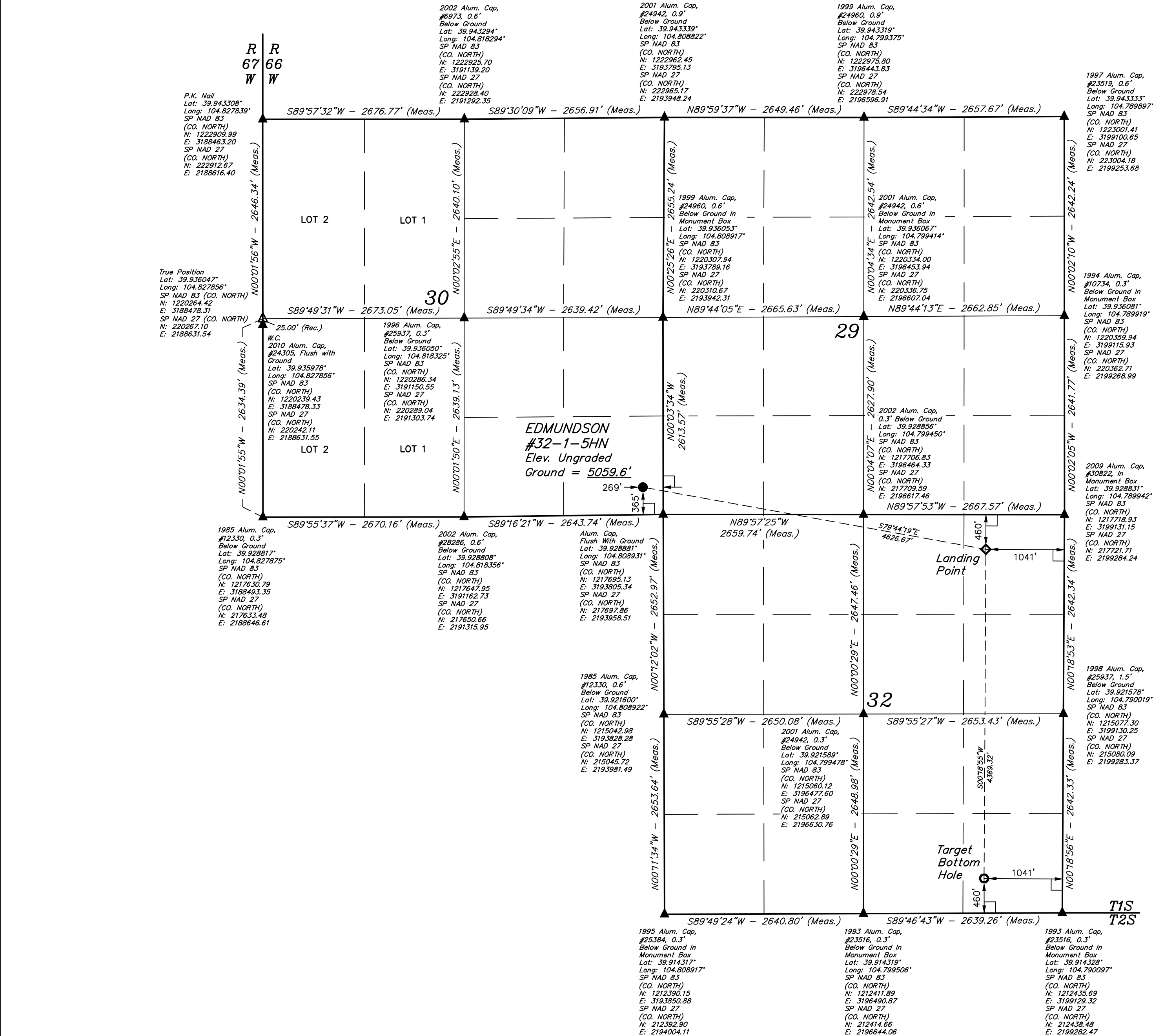


LEGEND:  
= 90° SYMBOL  
● = PROPOSED WELLHEAD.  
○ = TARGET BOTTOM HOLE.  
◆ = LANDING POINT.  
▲ = SECTION CORNERS LOCATED. (NAD 83)  
△ = SECTION CORNERS RE-ESTABLISHED. (Not Set on Ground.) (NAD 83)

T1S, R66W, 6th P.M.



NAD 83 (SURFACE LOCATION)	NAD 83 (LANDING POINT)	NAD 83 (TARGET BOTTOM HOLE)
LATITUDE = 39°55'47.55" (39.929875)	LATITUDE = 39°55'39.28" (39.927578)	LATITUDE = 39°54'56.11" (39.915586)
LONGITUDE = 104°48'35.59" (104.809886)	LONGITUDE = 104°47'37.19" (104.793664)	LONGITUDE = 104°47'37.66" (104.793794)
NAD 27 (SURFACE LOCATION)	NAD 27 (LANDING POINT)	NAD 27 (TARGET BOTTOM HOLE)
LATITUDE = 39°55'47.60" (39.929889)	LATITUDE = 39°55'39.33" (39.927592)	LATITUDE = 39°54'56.17" (39.915603)
LONGITUDE = 104°48'33.69" (104.809358)	LONGITUDE = 104°47'35.30" (104.793139)	LONGITUDE = 104°47'35.76" (104.793267)
STATE PLANE NAD 83 (CO. NORTH)	STATE PLANE NAD 83 (CO. NORTH)	STATE PLANE NAD 83 (CO. NORTH)
N: 1218054.83 E: 3193534.65	N: 1217254.33 E: 3198090.27	N: 1212886.20 E: 3198088.76
STATE PLANE NAD 27 (CO. NORTH)	STATE PLANE NAD 27 (CO. NORTH)	STATE PLANE NAD 27 (CO. NORTH)
N: 218057.56 E: 2193687.83	N: 217257.10 E: 2198243.38	N: 212888.98 E: 2198241.92

**BASIS OF BEARINGS**  
BASIS OF BEARINGS IS A G.P.S. OBSERVATION  
**BASIS OF ELEVATION**  
USGS COOPERATIVE BASE NETWORK CONTROL STATION.  
DESIGNATION "JR 53 5026". NGS DATA SHEET LISTS THE NAVD 88  
ELEVATION AS BEING 5028 FEET.

**UEL, LLC**  
Corporate Office \* 85 South 200 East  
Vernal, UT 84078 \* (435) 789-1017

CERTIFICATE OF RECORDING  
THIS IS TO CERTIFY THAT THE ABOVE DESCRIBED SURVEY WAS MADE IN ACCORDANCE WITH THE REQUIREMENTS OF THE COLORADO SURVEYING ACT, AND THAT THE SAME ARE TRUE AND CORRECT TO THE BEST OF MY KNOWLEDGE AND BELIEF.

RECORDED LAND SURVEYOR  
REGISTRATION NO. 28285  
STATE OF COLORADO

**WARD PETROLEUM CORPORATION**  
EDMUNDSON #32-1-5HN  
SE 1/4 SE 1/4, SECTION 30, T1S, R66W, 6th P.M.  
ADAMS COUNTY, COLORADO

SURVEYED BY	GREG WEIMER, J.C.	03-28-17	SCALE
DRAWN BY	D.COX	04-03-17	1" = 1000'

**WELL LOCATION PLAT**