

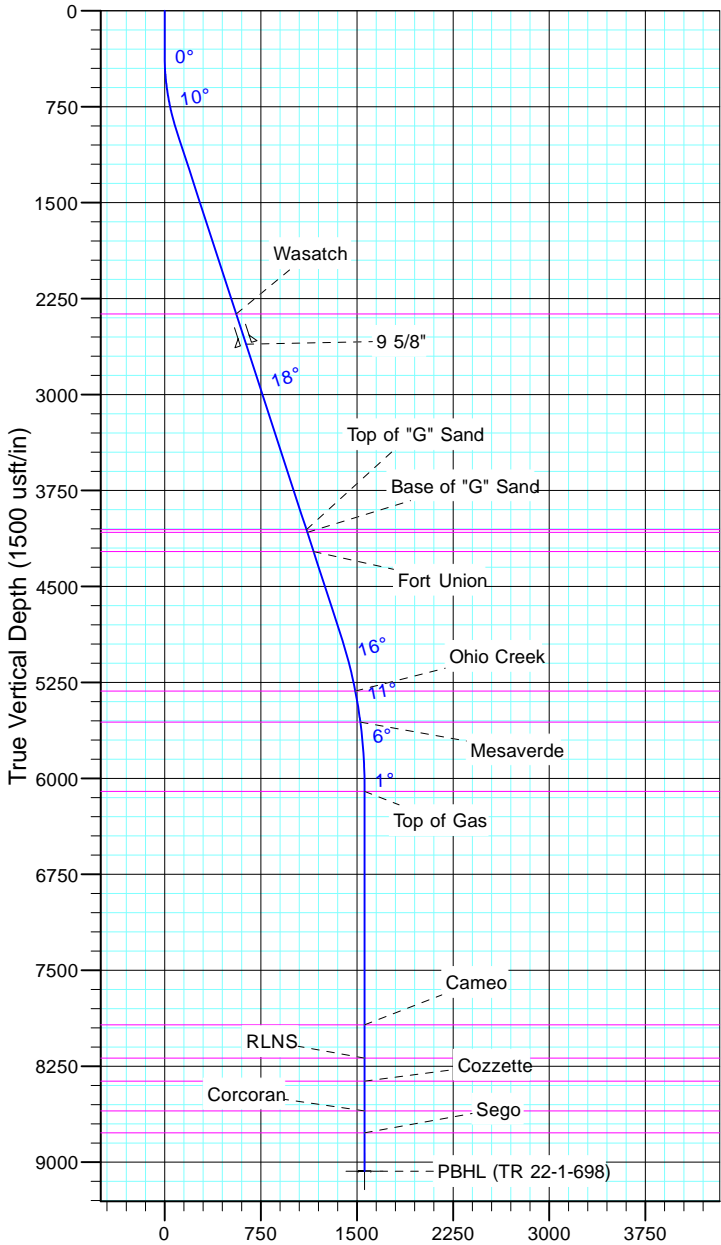
TEP Rocky Mountain LLC

Project: Garfield County, CO NAD83  
Site: TR 11-1-698 Pad  
Well: TR 22-1-698  
Wellbore: OH  
Design: Plan #1



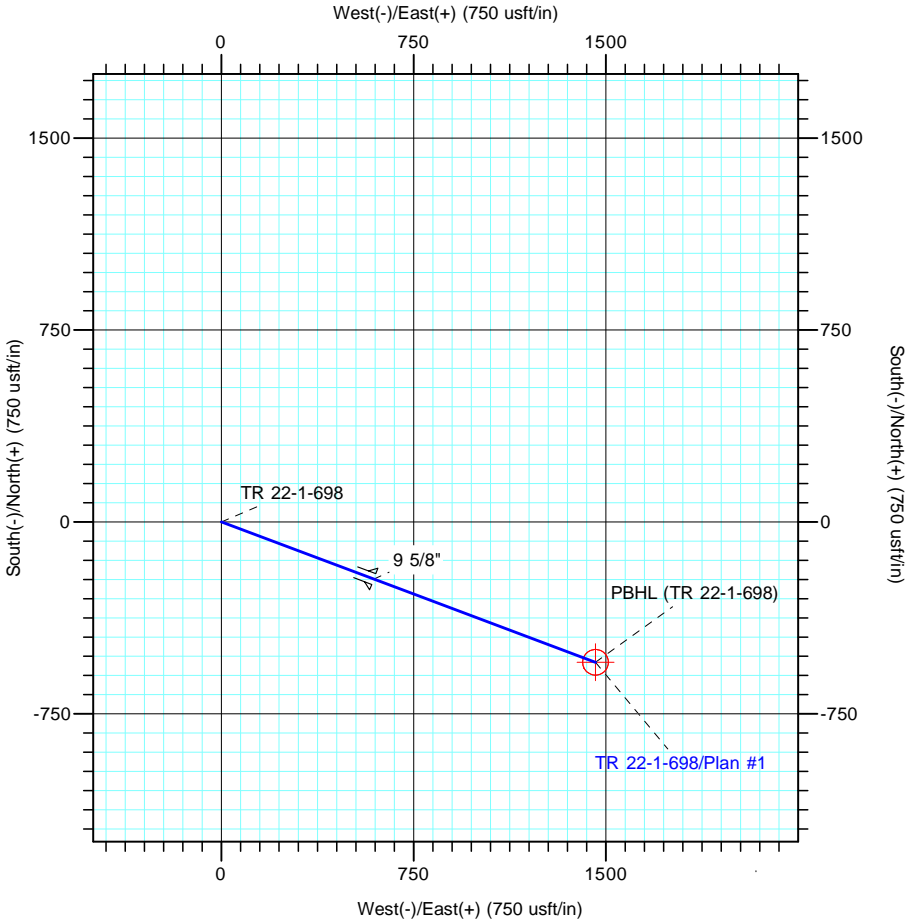
Azimuths to True North  
Magnetic North: 11.59°

Magnetic Field  
Strength: 53023.3snT  
Dip Angle: 65.98°  
Date: 12/31/2004  
Model: IGRF2000



CASING DETAILS			
TVD	MD	Name	Size
2608.3	2704.0	9 5/8"	9-5/8

FORMATION TOP DETAILS		
TVDPath	MDPath	Formation
2371.0	2454.4	Wasatch
4057.0	4227.2	Top of "G" Sand
4078.0	4249.3	Base of "G" Sand
4228.0	4407.0	Fort Union
5318.0	5545.3	Ohio Creek
5561.0	5791.5	Mesaverde
6103.0	6334.9	Top of Gas
7927.0	8158.9	Cameo
8188.0	8419.9	RLNS
8368.0	8599.9	Cozzette
8601.0	8832.9	Corcoran
8772.0	9003.9	Sego



DESIGN TARGET DETAILS							
Name	TVD	+N/-S	+E/-W	Northing	Easting	Latitude	Longitude
PBHL (TR 22-1-698)	9072.0	-548.7	1459.3	1640887.22	2216320.07	39° 33' 36.367 N	108° 16' 47.993 W

SECTION DETAILS										
Sec	MD	Inc	Azi	TVD	+N/-S	+E/-W	Dleg	TFace	VSect	Target
1	0.0	0.00	0.00	0.0	0.0	0.0	0.00	0.00	0.0	
2	350.0	0.00	0.00	350.0	0.0	0.0	0.00	0.00	0.0	
3	949.9	18.00	110.61	940.1	-32.9	87.5	3.00	110.61	93.5	
4	5088.1	18.00	110.61	4875.7	-482.9	1284.3	0.00	0.00	1372.1	
5	6287.9	0.00	0.00	6056.0	-548.7	1459.3	1.50	180.00	1559.0	
6	9303.9	0.00	0.00	9072.0	-548.7	1459.3	0.00	0.00	1559.0	PBHL (TR 22-1-698)