



# Kerr-McGee Oil & Gas Onshore LP

A subsidiary of Anadarko Petroleum Corporation

1099 18<sup>th</sup> Street  
Denver, CO 80202  
720-929-6000

May 12, 2017

Matt Lepore  
Director, Colorado Oil and Gas Conservation Commission  
Department of Natural Resources  
The Chancery Building  
1120 Lincoln Street, Suite 801  
Denver, CO 80203

Re: **30 Day Certification Letter - 318A.e**  
PAPA JO 2-25 35C-17HZ (Doc # 401195775)  
Township 1 North, Range 68 West  
Section 8: NWSW  
Unit Acreage: 480  
Unit Spacing: 01N 68W Sec 8: S2SW  
01N 68W Sec 17: W2  
01N 68W Sec 20: N2NW  
Weld County, Colorado

Dear Director Lepore:

Kerr-McGee Oil and Gas Onshore LP ("KMG") hereby certifies that a thirty (30) day notice has been given by certified mail to all mineral owners in the proposed wellbore spacing unit. We received an objection from Crestone on 10/17/16 regarding mineral ownership in the proposed spacing unit. After further negotiations, Crestone lifted their objection on 5/11/17. KMG hereby respectfully requests approval of this well and spacing unit.

If you have any questions or issues regarding this permit, please contact me at (720) 929-6907.

Sincerely,

**KERR-McGEE OIL AND GAS ONSHORE LP**

A handwritten signature in black ink that reads 'Shayelyn Marshall'.

Shayelyn Marshall  
Regulatory Analyst II

# PROPOSED SPACING UNIT

## T1N, R68W

NW. COR.  
SEC. 8, T1N, R68W  
FOUND 3 1/4" BLM  
BRASS CAP

S 89°36'55" W 2754.26' (M)

S 89°33'45" W 2720.88' (M)

NE. COR.  
SEC. 8, T1N, R68W  
FOUND 2 1/2" ALUM. CAP  
L.S. NO 38459

SURFACE LOCATION: NAD 83  
GROUND ELEVATION= 5064.6'  
LATITUDE= 40.062071°  
LONGITUDE= -105.033034°  
LATITUDE= 40°03'43.455"  
LONGITUDE= -105°01'58.922"  
HEEL LOCATION: NAD 83  
LATITUDE= 40.058070°  
LONGITUDE= -105.033679°  
LATITUDE= 40°03'29.051"  
LONGITUDE= -105°02'01.243"  
BOTTOM HOLE LOCATION: NAD 83  
LATITUDE= 40.043856°  
LONGITUDE= -105.033671°  
LATITUDE= 40°02'37.880"  
LONGITUDE= -105°02'01.216"

N 00°01'47" E  
2671.86' (M)

N 00°48'32" E 2674.27' (M)

W. 1/4 COR.  
SEC. 8, T1N, R68W  
FOUND 3 1/4" ALUM. CAP  
P.L.S. NO. 37971

S 89°36'31" W  
2796.33' (M)

S 89°36'08" W  
2684.49' (M)

E. 1/4 COR.  
SEC. 8, T1N, R68W  
FOUND 2 1/2" ALUM. CAP  
L.S. NO. 23501

8

CENTER 1/4 COR.  
SEC. 8, T1N, R68W  
FOUND 3 1/4" ALUM. CAP  
P.L.S. NO. 37990

**PAPA JO 2-25 35C-17HZ**

SURFACE LOCATION

1204'

1405'

N 00°00'58" E  
2700.51' (M)

N 00°49'07" E 2673.94' (M)

SW. COR.  
SEC. 8, T1N, R68W  
FOUND 3 1/4" BLM  
BRASS CAP

S 89°01'40" W 2647.82' (M)

S 89°00'57" W 2647.38' (M)

S. 1/4 COR.  
SEC. 8, T1N, R68W  
FOUND 3 1/4" ALUM. CAP  
L.S. NO. 28258

SE. COR.  
SEC. 8, T1N, R68W  
FOUND 2 1/2" ALUM. CAP  
L.S. NO. 23501

WELL BORE CONTINUES  
INTO SECTION 17

MATCH LINE  
SEE SHEET 2

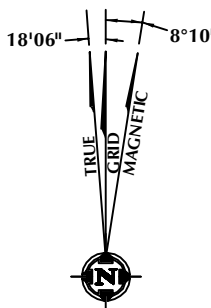
### CERTIFICATE OF SURVEYOR:

THIS IS TO CERTIFY THAT THE ABOVE PLAT WAS PREPARED FROM FIELD NOTES OF ACTUAL SURVEY MADE BY ME OR UNDER MY SUPERVISION AND THAT THE SAME ARE TRUE AND CORRECT TO THE BEST OF MY KNOWLEDGE AND BELIEF. THIS CERTIFICATE DOES NOT REPRESENT A LAND SURVEY PLAT OR IMPROVEMENT SURVEY PLAT AS DEFINED BY C.R.S. 38-51-102 AND CANNOT BE RELIED UPON TO DETERMINE OWNERSHIP.

*Randall K. French*  
38512

RANDALL K. FRENCH  
PROFESSIONAL LAND SURVEYOR  
COLORADO REGISTRATION NUMBER 18512

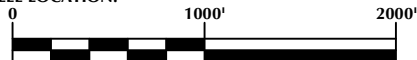
NOTICE:  
ACCORDING TO COLORADO STATE LAW YOU MUST COMMENCE ANY LEGAL ACTION BASED UPON ANY DEFECT IN THIS SURVEY WITHIN THREE YEARS AFTER YOU FIRST DISCOVER SUCH DEFECT. IN NO EVENT MAY ANY ACTION BASED UPON ANY DEFECT IN THIS SURVEY BE COMMENCED MORE THAN TEN YEARS FROM THE DATE ON THE CERTIFICATION SHOWN HEREON.



NOTE:  
MAGNETIC NORTH IS CURRENT AS OF 1/5/2016.  
MAGNETIC NORTH CHANGES WEST 0°06' PER YEAR.

### NOTES:

- ▲ INDICATES SECTION CORNER
- INDICATES CALCULATED CORNER
- ELEVATION BASED ON NAVD88 (GEOID12B)
- BASIS OF BEARING DERIVED FROM COLORADO COORDINATE SYSTEM OF 1983 NORTH ZONE.
- ALL MEASURED DISTANCES ARE GRID.
- COMBINED SCALE FACTOR: .99972035 CALCULATED FROM THE S. 1/4 CORNER OF SECTION 17, T1N, R68W
- OPERATOR: ROB WILSON / PDOP = 1.7
- SEE ADDENDUM TO WELL LOCATION CERTIFICATE FOR EXISTING IMPROVEMENTS WITHIN 500' OF THE WELL PAD.
- WELL FOOTAGES ARE MEASURED AT RIGHT ANGLES TO THE SECTION LINES.
- THE BOTTOM OF HOLE BEARS S00°19'29"E, 5178' FROM THE HEEL LOCATION.



SCALE: 1" = 1000'

### WELL PAD - PAPA JO 2-25 35N2-17HZ

PAPA JO 2-25 35C-17HZ  
WELL LOCATION CERTIFICATE  
1405' FSL & 1204' FWL NWSW (SURFACE)  
LOCATED IN SECTION 8  
50' FNL & 956' FWL NWNW (HEEL)  
50' FSL & 965' FWL SWSW (BOTTOM)  
LOCATED IN SECTION 17  
T1N, R68W, 6TH P.M.  
WELD COUNTY, COLORADO

**Kerr-McGee Oil &  
Gas Onshore L.P.**  
1099 18th Street  
Denver, Colorado 80202



### CONSULTING, LLC

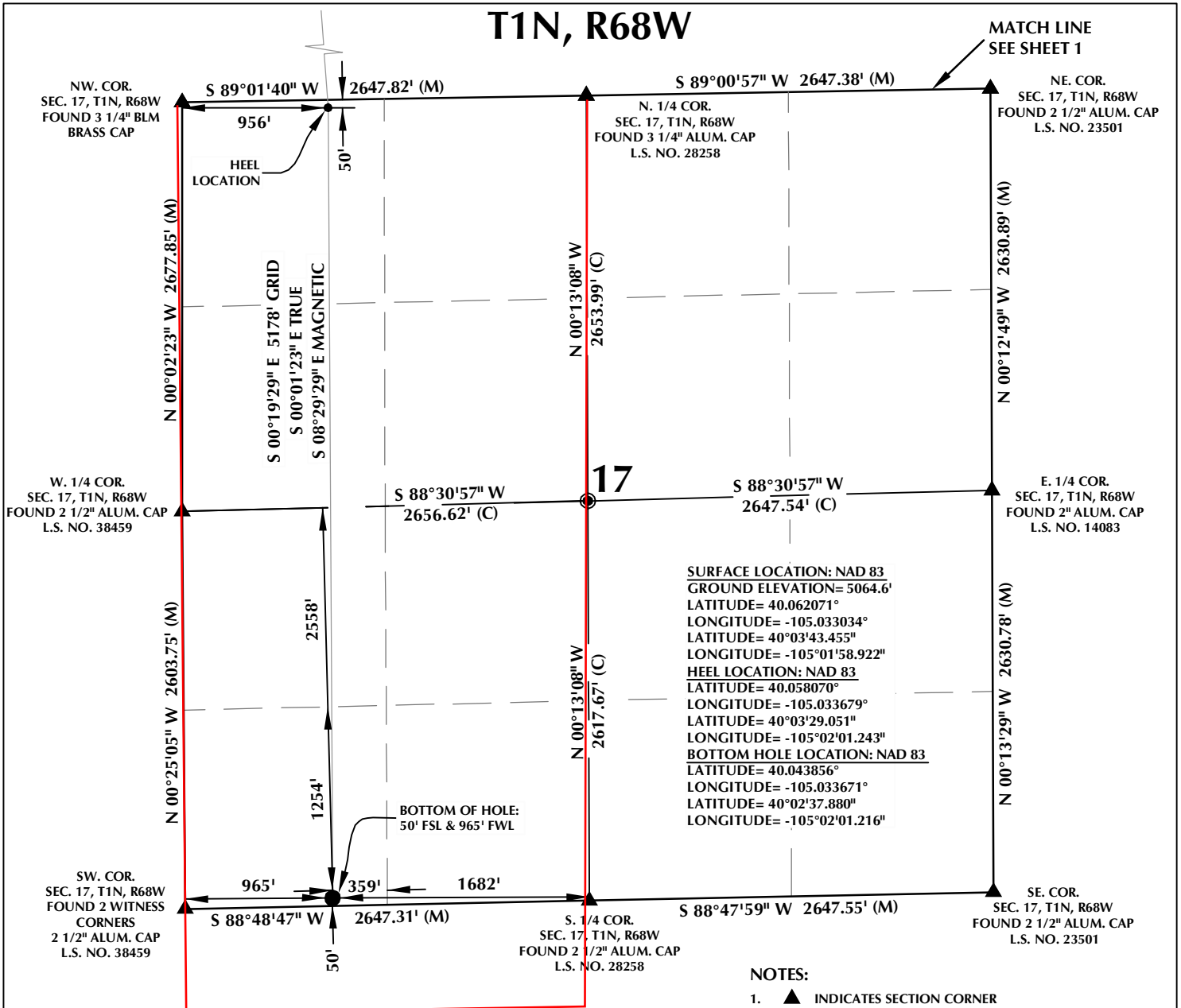
SHERIDAN OFFICE  
1095 Saberton Avenue  
Sheridan, Wyoming 82801  
Phone 307-674-0609

LOVELAND OFFICE  
1635 Foxtrail Drive, Suite 204  
Loveland, Colorado 80538  
Phone 970-776-4331

DRAFTED BY:	LMO	CHECKED BY:	RKF	SHEET NO:
DATE DRAFTED:	8/24/16	DATE SURVEYED:	6/30/16	1
REVISED:		FILE NAME:	16-04	1 OF 2

# PROPOSED SPACING UNIT

T1N, R68W

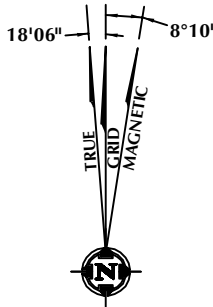


## CERTIFICATE OF SURVEYOR:

THIS IS TO CERTIFY THAT THE ABOVE PLAT WAS PREPARED FROM FIELD NOTES OF ACTUAL SURVEY MADE BY ME OR UNDER MY SUPERVISION AND THAT THE SAME ARE TRUE AND CORRECT TO THE BEST OF MY KNOWLEDGE AND BELIEF. THIS CERTIFICATE DOES NOT REPRESENT A LAND SURVEY PLAT OR IMPROVEMENT SURVEY PLAT AS DEFINED BY C.R.S. 38-51-202 AND CANNOT BE RELIED UPON TO DETERMINE OWNERSHIP.

*Randall K. French*  
RANDALL K. FRENCH  
PROFESSIONAL LAND SURVEYOR  
COLORADO REGISTRATION NUMBER 18512

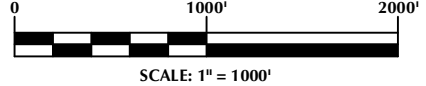
NOTICE: ACCORDING TO COLORADO STATE LAW YOU MUST COMMENCE ANY LEGAL ACTION BASED UPON ANY DEFECT IN THIS SURVEY WITHIN THREE YEARS AFTER YOU FIRST DISCOVER SUCH DEFECT. IN NO EVENT MAY ANY ACTION BASED UPON ANY DEFECT IN THIS SURVEY BE COMMENCED MORE THAN TEN YEARS FROM THE DATE ON THE CERTIFICATION SHOWN HEREON.



NOTE: MAGNETIC NORTH IS CURRENT AS OF 1/5/2016. MAGNETIC NORTH CHANGES WEST 0°06' PER YEAR.

## NOTES:

- ▲ INDICATES SECTION CORNER
- INDICATES CALCULATED CORNER
- ELEVATION BASED ON NAVD88 (GEOID12B)
- BASIS OF BEARING DERIVED FROM COLORADO COORDINATE SYSTEM OF 1983 NORTH ZONE.
- ALL MEASURED DISTANCES ARE GRID.
- COMBINED SCALE FACTOR: .99972035 CALCULATED FROM THE S. 1/4 CORNER OF SECTION 17, T1N, R68W
- OPERATOR: ROB WILSON / PDOP = 1.7
- SEE ADDENDUM TO WELL LOCATION CERTIFICATE FOR EXISTING IMPROVEMENTS WITHIN 500' OF THE WELL PAD.
- WELL FOOTAGES ARE MEASURED AT RIGHT ANGLES TO THE SECTION LINES.
- THE BOTTOM OF HOLE BEARS S00°19'29"E, 5178' FROM THE HEEL LOCATION.



## WELL PAD - PAPA JO 2-25 35N2-17HZ

PAPA JO 2-25 35C-17HZ  
WELL LOCATION CERTIFICATE  
1405' FSL & 1204' FWL NWSW (SURFACE)  
LOCATED IN SECTION 8  
50' FNL & 956' FWL NWNW (HEEL)  
50' FSL & 965' FWL SWSW (BOTTOM)  
LOCATED IN SECTION 17  
T1N, R68W, 6TH P.M.  
WELD COUNTY, COLORADO

**Kerr-McGee Oil & Gas Onshore L.P.**  
1099 18th Street  
Denver, Colorado 80202



## CONSULTING, LLC

SHERIDAN OFFICE  
1095 Saberton Avenue  
Sheridan, Wyoming 82801  
Phone 307-674-0609

LOVELAND OFFICE  
1635 Foxtrail Drive, Suite 204  
Loveland, Colorado 80538  
Phone 970-776-4331

DRAFTED BY:	LMO	CHECKED BY:	RKF	SHEET NO:
DATE DRAFTED:	8/24/16	DATE SURVEYED:	6/30/16	2
REVISED:		FILE NAME:	16-04	2 OF 2