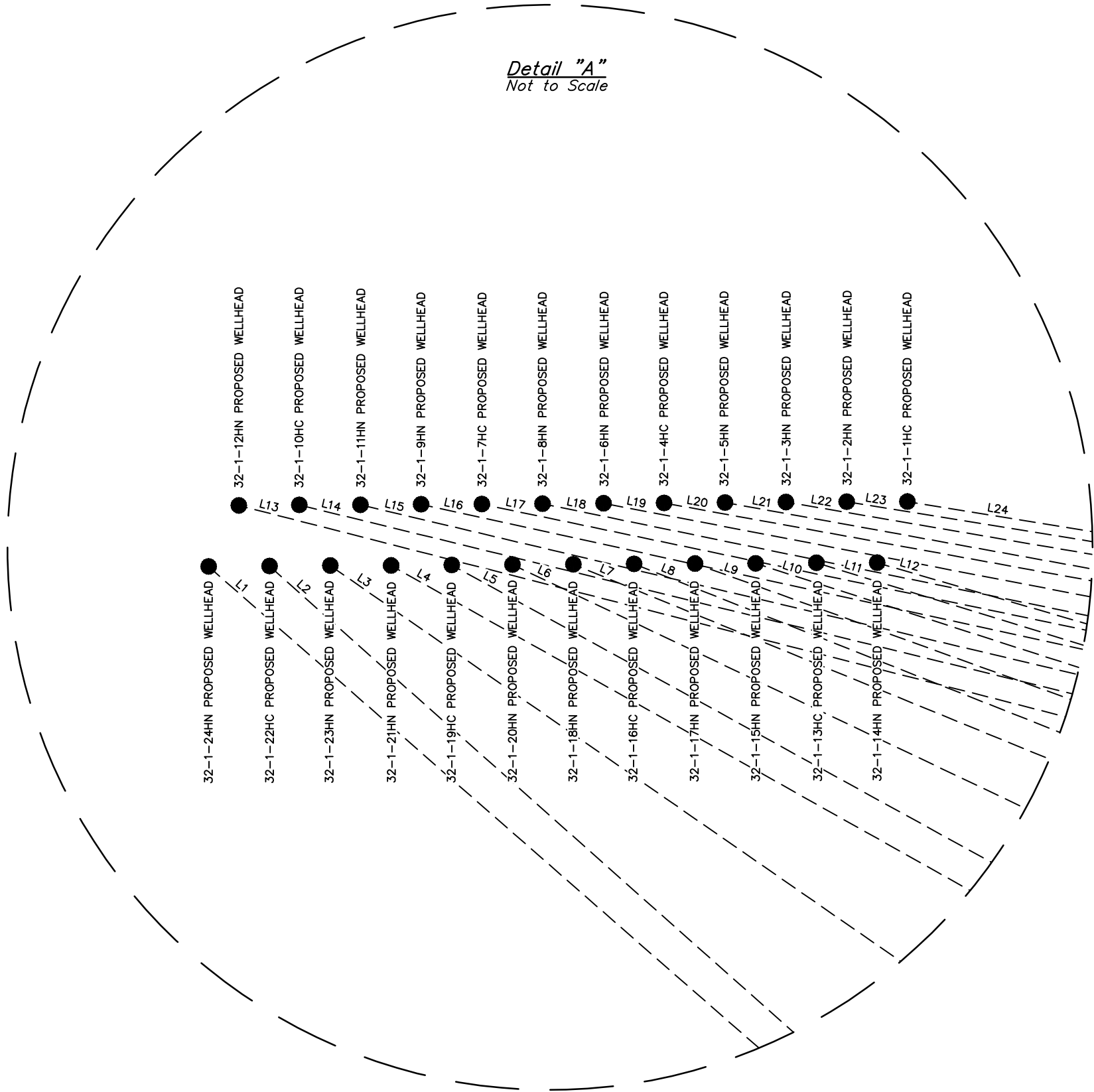


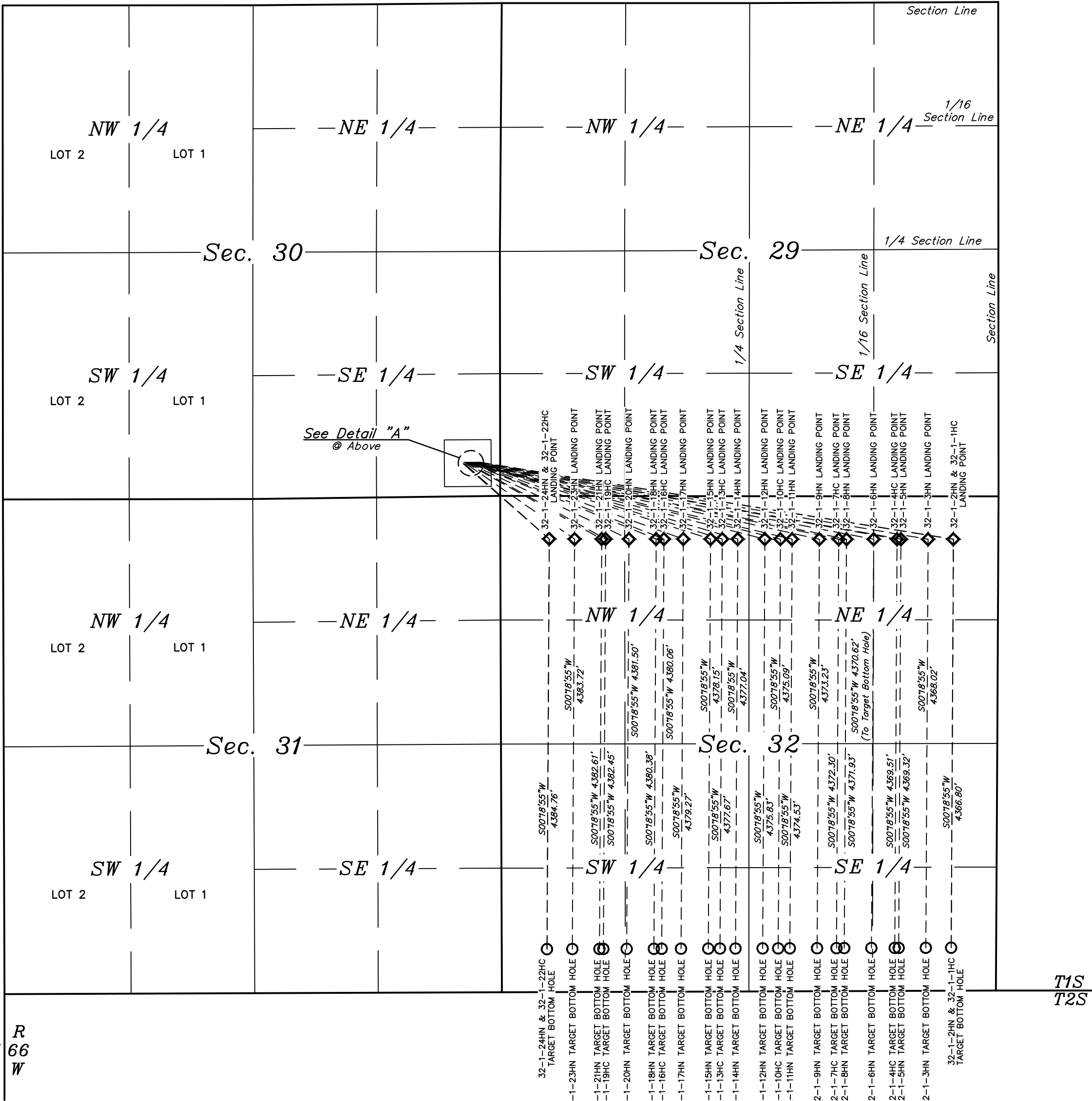


LEGEND:  
● = WELLHEAD LOCATION.  
○ = TARGET BOTTOM HOLE.  
◇ = LANDING POINT.

T1S, R66W, 6th P.M.



LINE TABLE		
LINE	DIRECTION	LENGTH
L1	S48°49'10"E	1223.78'
L2	S48°20'53"E	1212.58'
L3	S55°14'50"E	1414.34'
L4	S60°41'57"E	1647.86'
L5	S61°08'51"E	1671.57'
L6	S64°35'02"E	1880.04'
L7	S67°45'39"E	2132.72'
L8	S68°25'42"E	2195.89'
L9	S70°07'33"E	2375.53'
L10	S72°09'35"E	2636.88'
L11	S72°51'33"E	2741.88'
L12	S73°44'24"E	2886.56'
L13	S75°39'51"E	3322.07'
L14	S76°16'43"E	3468.72'
L15	S76°41'41"E	3575.61'
L16	S77°38'13"E	3844.82'
L17	S78°13'07"E	4032.62'
L18	S78°24'39"E	4099.27'
L19	S79°08'02"E	4369.99'
L20	S79°40'50"E	4600.11'
L21	S79°44'19"E	4626.67'
L22	S80°18'31"E	4897.54'
L23	S80°47'07"E	5150.10'
L24	S80°45'29"E	5135.33'



R 67  
W

R 66  
W

T1S  
T2S

WARD PETROLEUM CORPORATION

EDMUNDSON PAD  
SE 1/4 SE 1/4, SECTION 30, T1S, R66W, 6th P.M.  
ADAMS COUNTY, COLORADO

SURVEYED BY	GREG WEIMER, J.C.	03-28-17	SCALE
DRAWN BY	D.COX	04-03-17	1" = 1000'
MULTI-Well PLAN		FIGURE #5	



UELS, LLC  
Corporate Office \* 85 South 200 East  
Vernal, UT 84078 \* (435) 789-1017