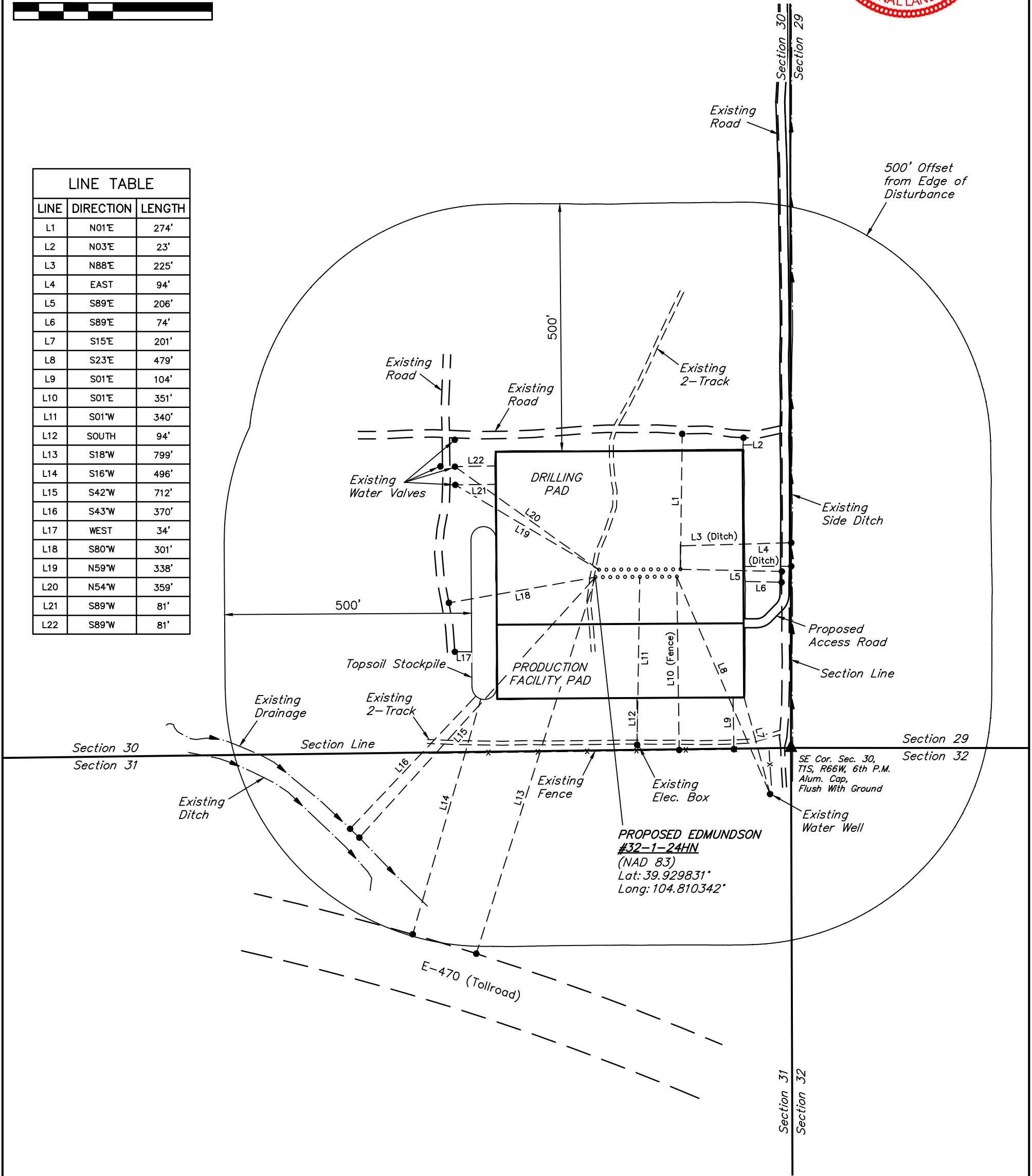


LINE TABLE		
LINE	DIRECTION	LENGTH
L1	N01°E	274'
L2	N03°E	23'
L3	N88°E	225'
L4	EAST	94'
L5	S89°E	206'
L6	S89°E	74'
L7	S15°E	201'
L8	S23°E	479'
L9	S01°E	104'
L10	S01°E	351'
L11	S01°W	340'
L12	SOUTH	94'
L13	S18°W	799'
L14	S16°W	496'
L15	S42°W	712'
L16	S43°W	370'
L17	WEST	34'
L18	S80°W	301'
L19	N59°W	338'
L20	N54°W	359'
L21	S89°W	81'
L22	S89°W	81'



NOTES:

WARD PETROLEUM CORPORATION

EDMUNDSON PAD  
SE 1/4 SE 1/4, SECTION 30, T1S, R66W, 6th P.M.  
ADAMS COUNTY, COLORADO

SURVEYED BY	GREG WEIMER, J.C.	03-28-17	SCALE
DRAWN BY	D.COX	04-03-17	1" = 200'
LOCATION DRAWING		FIGURE #4	



UELS, LLC  
Corporate Office \* 85 South 200 East  
Vernal, UT 84078 \* (435) 789-1017