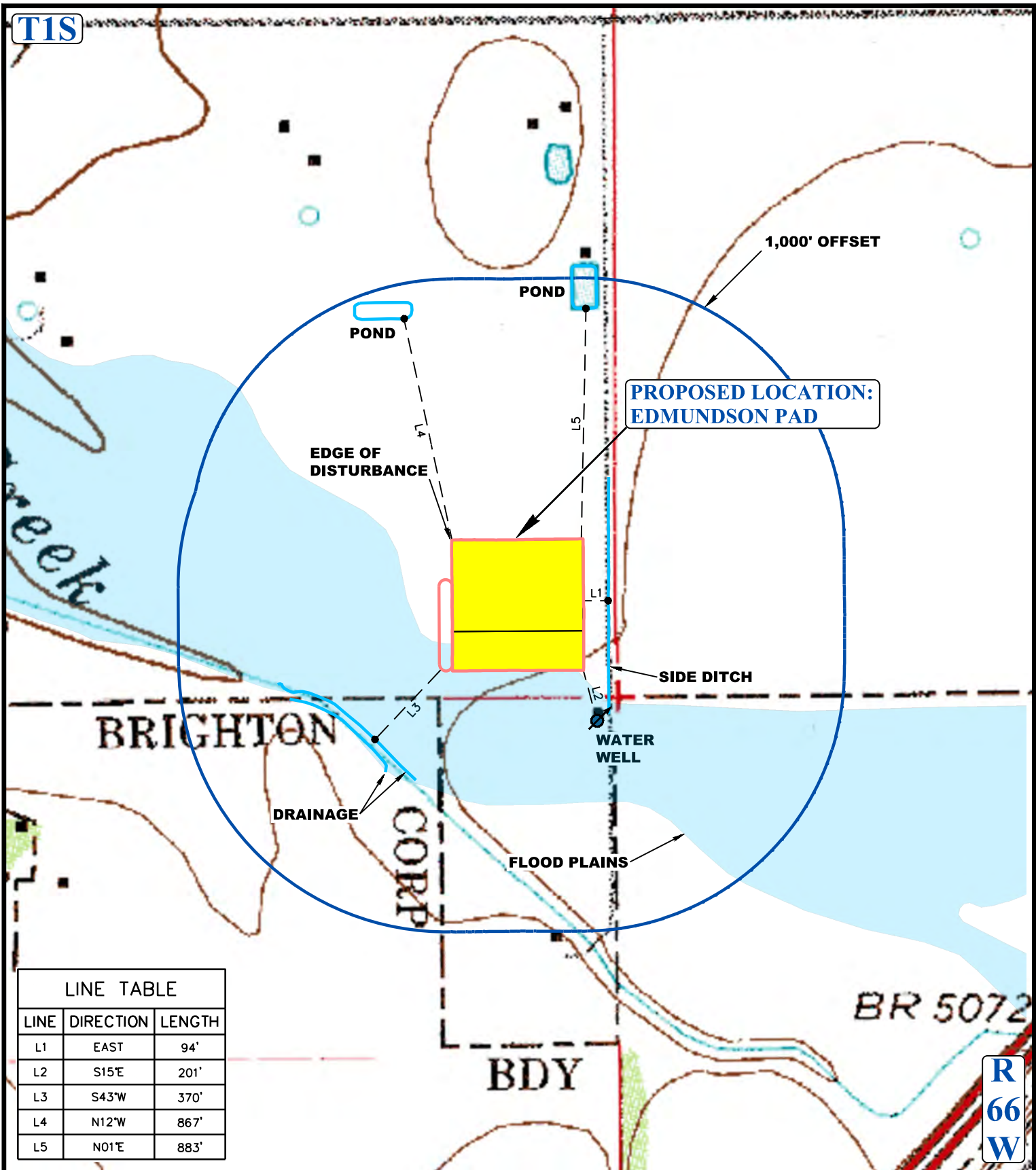


T1S



R  
66  
W

**LEGEND:**

- EXISTING DRAINAGE
- 1000' OFFSET BOUNDARY
- EDGE OF DISTURBANCE
- FLOOD PLAINS



WATER WELLS



**WARD PETROLEUM CORPORATION**

**EDMUNDSON PAD**  
SE 1/4 SE 1/4, SECTION 30, T1S, R66W, 6th P.M.  
ADAMS COUNTY, COLORADO

SURVEYED BY	G.W., J.C.	03-28-17	SCALE
DRAWN BY	J.L.G.	03-30-17	1 : 6,000
HYDROLOGY MAP			TOPO W



**UELS, LLC**  
Corporate Office \* 85 South 200 East  
Vernal, UT 84078 \* (435) 789-1017