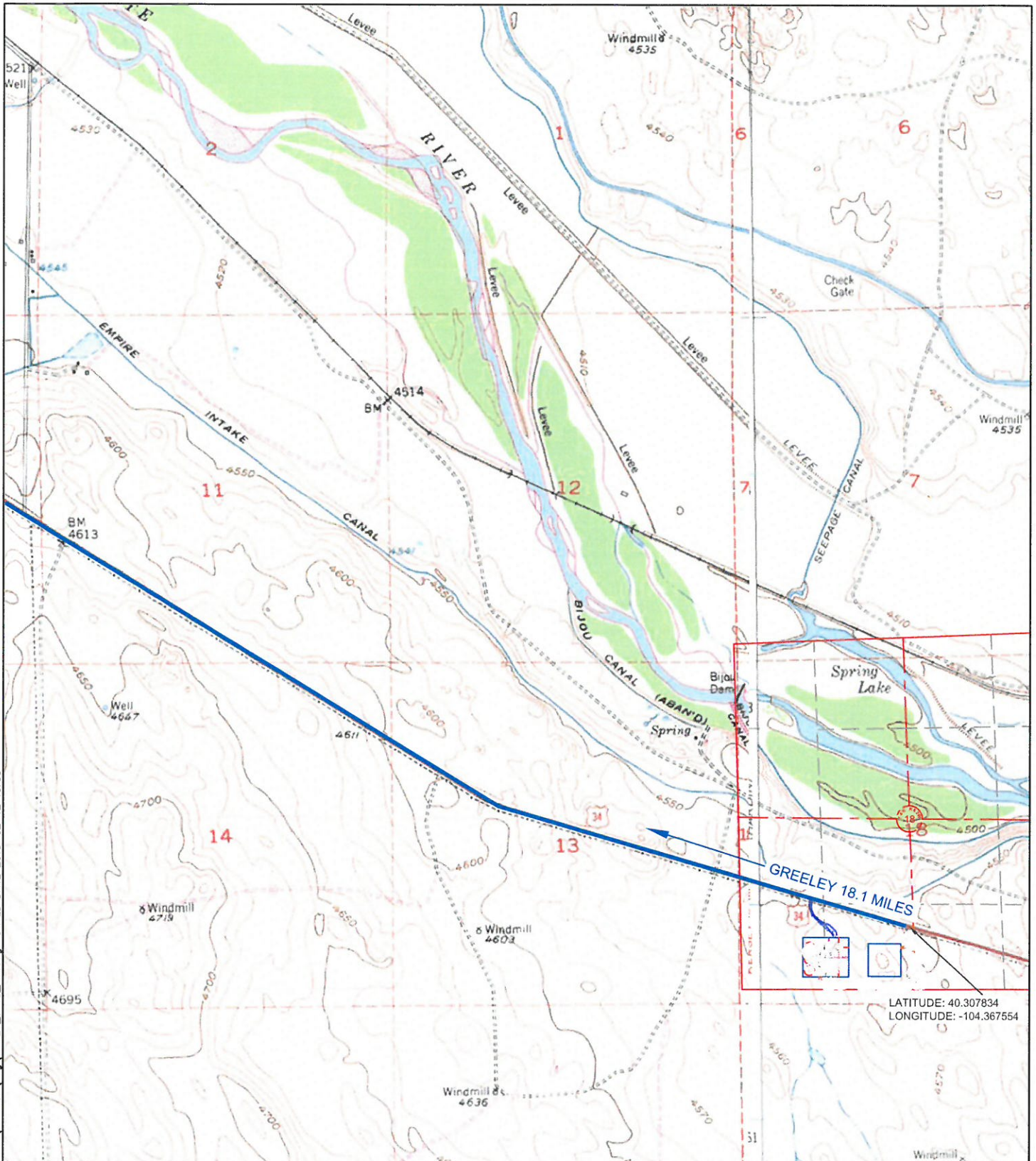


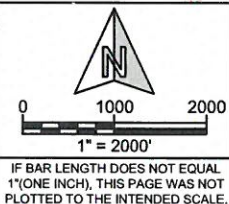
C:\Users\Marc\Desktop\BONANZA\4N-62W\dwg\MAP24_J-18_MM.dwg SAVED DATE 2015-02-12 16:35



LATITUDE: 40.307834
LONGITUDE: -104.367554

Fremont
ENGINEERING & SURVEYING
64 COAL MINE RD.
LANDER, WY 82520
307-349-0840
fes@wyoming.com

Drawn By: DAF
Checked By: MAM
Date: 10/23/14
Revision: 2
Date: 02-12-15
Explanation:
ACCESS CHANGE
WELL PAD CHANGE



Existing Access
STATE SEVENTY HOLES J-18
PAD
SW¼, SECTION 18,
T.4N., R.62W., 6th PM
WELD COUNTY, COLORADO



410 17th Street
Denver, CO 80202
(720) 440-6100

SHEET
1
OF
1