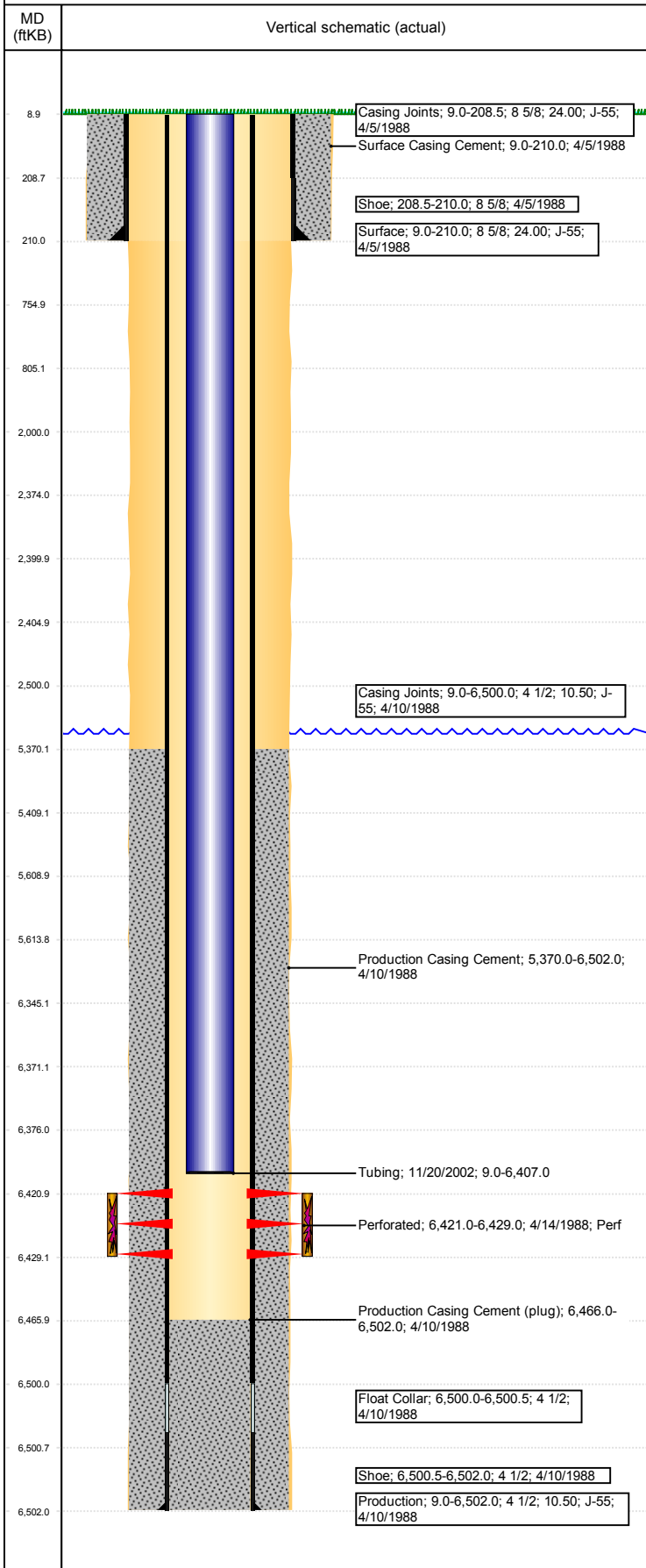


Well Name: LILLI UNIT 16-12

VERTICAL - Original Hole, 6/5/2017 2:47:51 PM



Well Header						
API 05-123-13916	Business Unit DJ BASIN	District 15	Well Config VERTICAL			
Original KB Elevation (ft) 4,725	KB - GL / MSL (ftKB) 9.00	Spud Date 4/5/1988		P & A Date		
Comment No tubing info in Denver file. WELL FILE SKETCHY, LOG RAN FOR CASING REPAIR BUT NO INDICATION THAT REPAIR WAS DONE.						
Directions To Well						
Current PBDT (mKB)						
Surface Location (Congressional)						
Quarter 3 SE	Quarter 4 SE	Section 12	Township 8	Twnshp N/S Dir N	Range 59	Range E/W Dir W
Bottom Hole Location						
North-South Distance (ft)		From N or S Line		East-West Distance (ft)		From E or W Line
Plug Back Total Depths						
Date	Depth (ftKB)	Method		Com		
Wellbore Sections						
Section Des		Size (in)		Act Top, MD (ftKB)		Act Btm, MD (ftKB)
SURFACE		12 1/4		9		210
PRODUCTION		7 7/8		210		6,502
Zone Statuses						
Zone Name	Status Date	Status	Fluid Type	Job		Prod Method
D SAND	12/1/1995	PR		DRILLING/COMPLETION - ORIGINAL, 4/5/1988...		
Casing Strings						
Csg Des	Run Date	OD (in)	Wt/Len (lb/ft)	Grade	Top, MD (ftKB)	MD (ftKB)
Surface	4/5/1988	8 5/8	24.00	J-55	9.0	210.0
Production	4/10/1988	4 1/2	10.50	J-55	9.0	6,502.0
Cement						
Des				Top (ftKB)		Btm (ftKB)
Surface Casing Cement				9.0		210.0
Production Casing Cement				5,370.0		6,502.0
Tubing Components						
Item Des		OD (in)	Wt (lb/ft)	Grade	Jts	Len (ft)
Perforation Data						
Linked Zone		Bnch/Stg	Sum of Entered Shot Total	Top (ftKB)	Btm (ftKB)	Date
D SAND, Original Hole			33	6,421.00	6,429.00	4/14/1988
Total (Sum)			33			
Other In Hole						
Run Date	Des			OD (in)	Top (ftKB)	Btm (ftKB)
5/8/2017	CICR			4	2,400.0	2,405.0
5/8/2017	Cast Iron Bridge Plug			4	6,371.0	6,376.0
5/8/2017	Cast Iron Bridge Plug			4	5,609.0	5,614.0
Logs						
Date	Type			Top, MD (ftKB)	Btm, MD (ftKB)	
4/10/1988	DIFL/DENS/GR/GRD/CAL			5,600.0	6,502.0	
4/10/1988	INDUCTION			212.0	6,502.0	
4/28/2008	CBL/CCL/GR			5,000.0	6,079.0	
8/5/2015	GYRO			9.0	6,400.0	
Stimulation Intervals						
Bnch/Stg	Start Date	Primary Job Type				
	4/16/1988	DRILLING/COMPLETION - ORIGINAL				
Comment						
Volume Slurry Total (gal) 0.00						
Treat Pressure Avg (psi)		Treat Pressure Max (psi)		Slurry Rate Avg (bbl/min)		Slurry Rate Max (bbl/min)

Well Name: LILLI UNIT 16-12

VERTICAL - Original Hole, 6/5/2017 2:47:51 PM

Stimulation Intervals

Bnch/Stg	Start Date 1/10/2003	Primary Job Type	
Comment			
Volume Slurry Total (gal) 0.00			
Treat Pressure Avg (psi)	Treat Pressure Max (psi)	Slurry Rate Avg (bbl/min)	Slurry Rate Max (bbl/min)

