

**GREAT WESTERN OPERATING COMPANY**

**BASIS OF BEARINGS**  
BASIS OF BEARINGS IS A G.P.S. OBSERVATION  
**BASIS OF ELEVATION**

A north arrow pointing upwards, labeled 'N' at the top. Below the arrow is a graphic scale bar with alternating black and white segments. The scale is marked with '1000'' at both ends and '500'' and '0'' in the center.

LINE TABLE		
LINE	DIRECTION	LENGTH
L1	N88°52'14"W	100.03'

THIS IS TO CERTIFY THAT THE ABOVE MAP WAS PREPARED FROM FIELD NOTES OF ACTUAL SURVEYS MADE BY ME OR UNDER MY SUPERVISION, AND THAT THE SAME ARE TRUE AND CORRECT TO THE BEST OF MY KNOWLEDGE AND BELIEF.

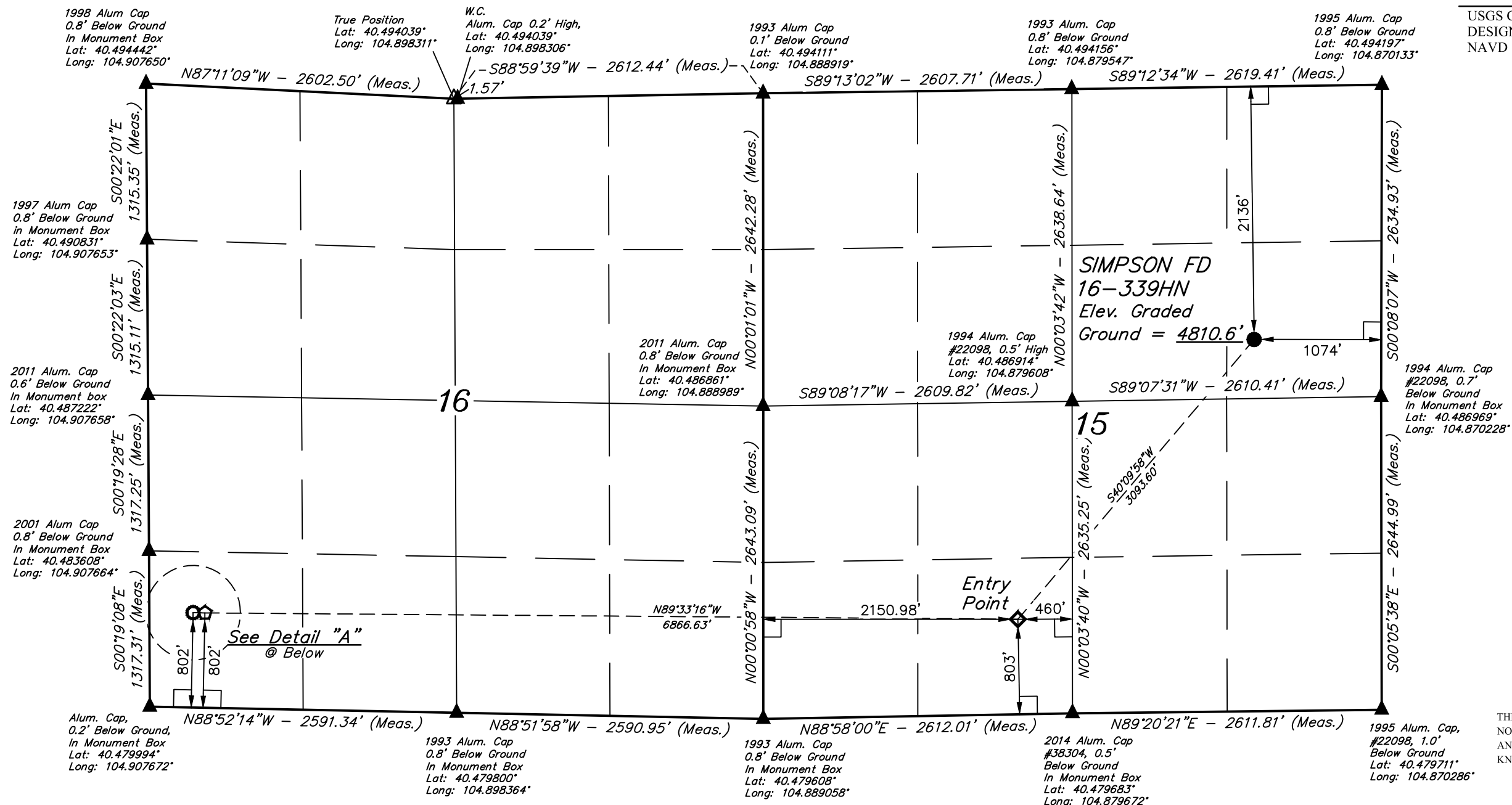
REGISTERED LAND SURVEYOR  
REGISTRATION NO. 28285  
STATE OF COLORADO 05-26-17

REV: 6 05-25-17 K.B. (SL, TBH MOVE &amp; BTM PERF ADD)



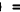






**UELS, LLC**  
Corporate Office \* 85 South 200 East  
Vernal, UT 84078 \* (435) 789-1017

SURVEYED BY: DALLAS NIELSEN, D.W.	DATE: 10-19-16
DRAWN BY: J.W.	DATE DRAWN: 12-29-14
SCALE: 1" = 1000'	
<b>WELL LOCATION PLAT</b>	



Detail "A"  
No Scale

 = 90° SYMBOL  
 = PROPOSED WELLHEAD.  
 = TARGET BOTTOM HOLE.  
 = ENTRY POINT.  
 = BTM PERF.  
 = SECTION CORNERS LOCATED. (NAD 83)  
 = SECTION CORNERS RE-ESTABLISHED.  
 (Not Set on Ground.) (NAD 83)

**PDOP = 1.2**