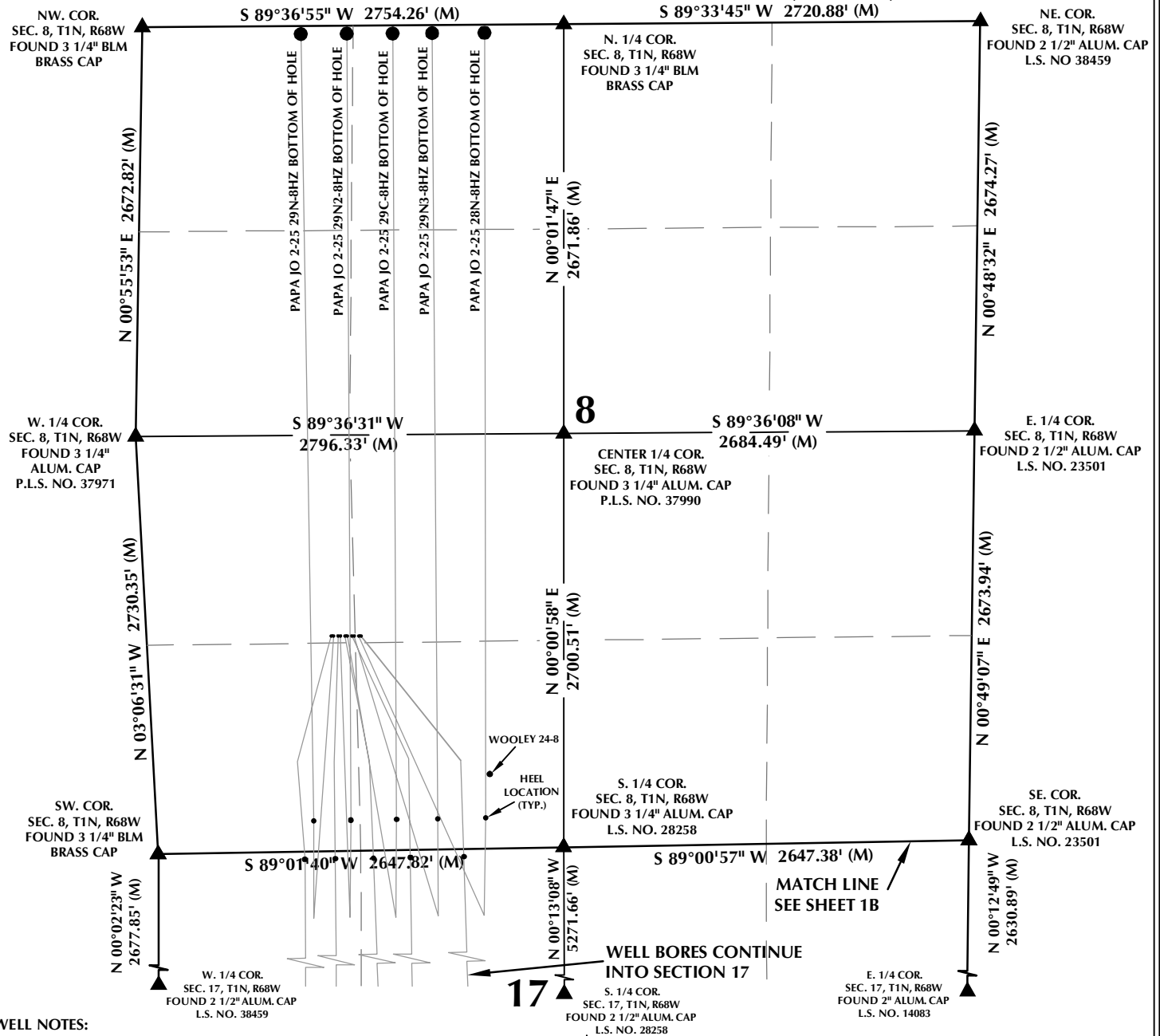


MULTI-WELL PLAN SECTIONS 8 & 17, T1N, R68W



WELL NOTES:

PAPA JO 2-25 35C-17HZ
SURFACE: 1405' FSL, 1204' FWL (SEC. 8)
BOTTOM HOLE: 50' FSL, 965' FWL (SEC. 17)

PAPA JO 2-25 29N-8HZ
SURFACE: 1405' FSL, 1219' FWL (SEC. 8)
BOTTOM HOLE: 50' FSL, 1035' FWL (SEC. 8)

PAPA JO 2-25 35N-17HZ
SURFACE: 1405' FSL, 1249' FWL (SEC. 8)
BOTTOM HOLE: 52' FSL, 1164' FWL (SEC. 17)

PAPA JO 2-25 29N2-8HZ
SURFACE: 1404' FSL, 1264' FWL (SEC. 8)
BOTTOM HOLE: 50' FSL, 1335' FWL (SEC. 8)

PAPA JO 2-25 35N2-17HZ
SURFACE: 1404' FSL, 1294' FWL (SEC. 8)
BOTTOM HOLE: 50' FSL, 1565' FWL (SEC. 17)

PAPA JO 2-25 29C-8HZ
SURFACE: 1404' FSL, 1309' FWL (SEC. 8)
BOTTOM HOLE: 50' FSL, 1635' FWL (SEC. 8)

PAPA JO 2-25 35C2-17HZ
SURFACE: 1403' FSL, 1339' FWL (SEC. 8)
BOTTOM HOLE: 53' FSL, 1689' FWL (SEC. 17)

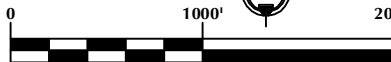
PAPA JO 2-25 29N3-8HZ
SURFACE: 1403' FSL, 1354' FWL (SEC. 8)
BOTTOM HOLE: 50' FSL, 1893' FWL (SEC. 8)

PAPA JO 2-25 28N-8HZ
SURFACE: 1402' FSL, 1384' FWL (SEC. 8)
BOTTOM HOLE: 50' FSL, 2235' FWL (SEC. 8)

PAPA JO 2-25 36N-17HZ
SURFACE: 1402' FSL, 1399' FWL (SEC. 8)
BOTTOM HOLE: 50' FSL, 2124' FWL (SEC. 17)

NOTES:

- ▲ INDICATES SECTION CORNER
- INDICATES CALCULATED CORNER
- BASIS OF BEARING DERIVED FROM COLORADO COORDINATE SYSTEM OF 1983 NORTH ZONE.
- ALL MEASURED DISTANCES ARE GRID.
COMBINED SCALE FACTOR: .99972035 CALCULATED FROM THE S. 1/4 CORNER OF SECTION 17, T1N, R68W
WELL FOOTAGES ARE MEASURED AT RIGHT ANGLES TO THE SECTION LINES.



SCALE: 1" = 1000'

WELL PAD - PAPA JO 2-25 35N2-17HZ

MULTI-WELL PLAN

PAPA JO 2-25 35C-17HZ, PAPA JO 2-25 29N-8HZ,
PAPA JO 2-25 35N-17HZ, PAPA JO 2-25 29N2-8HZ,
PAPA JO 2-25 35N2-17HZ, PAPA JO 2-25 29C-8HZ,
PAPA JO 2-25 35C2-17HZ, PAPA JO 2-25 29N3-8HZ,
PAPA JO 2-25 28N-8HZ & PAPA JO 2-25 36N-17HZ
LOCATED IN SECTIONS 8 & 17
T1N, R68W, 6TH P.M.
WELD COUNTY, COLORADO

**Kerr-McGee Oil &
Gas Onshore L.P.**

1099 18th Street
Denver, Colorado 80202



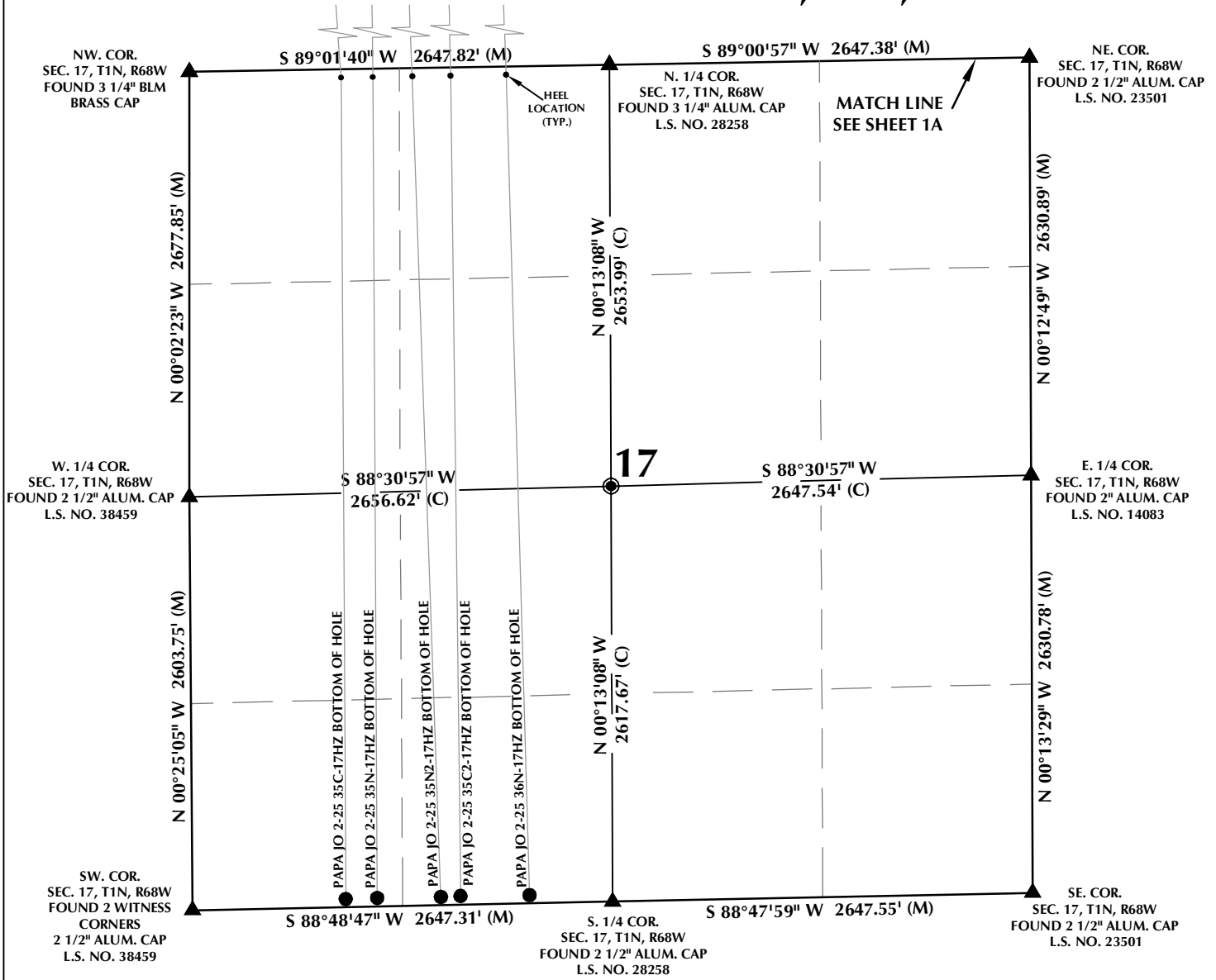
CONSULTING, LLC

SHERIDAN OFFICE
1095 Saberton Avenue
Sheridan, Wyoming 82801
Phone 307-674-0609

LOVELAND OFFICE
1635 Foxtrail Drive, Suite 204
Loveland, Colorado 80538
Phone 970-776-4331

DRAFTED BY:	LMO	CHECKED BY:	RKF	SHEET NO:
DATE DRAFTED:	8/24/16	DATE SURVEYED:	6/30/16	1A
REVISED:	4/17/17	FILE NAME:	16-04	1A OF 1

MULTI-WELL PLAN SECTION 17, T1N, R68W



WELL NOTES:

PAPA JO 2-25 35C-17HZ
SURFACE: 1405' FSL, 1204' FWL (SEC. 8)
BOTTOM HOLE: 50' FSL, 965' FWL (SEC. 17)

PAPA JO 2-25 29N-8HZ
SURFACE: 1405' FSL, 1219' FWL (SEC. 8)
BOTTOM HOLE: 50' FNL, 1035' FWL (SEC. 8)

PAPA JO 2-25 35N-17HZ
SURFACE: 1405' FSL, 1249' FWL (SEC. 8)
BOTTOM HOLE: 52' FSL, 1164' FWL (SEC. 17)

PAPA JO 2-25 29N2-8HZ
SURFACE: 1404' FSL, 1264' FWL (SEC. 8)
BOTTOM HOLE: 50' FNL, 1335' FWL (SEC. 8)

PAPA JO 2-25 35N2-17HZ
SURFACE: 1404' FSL, 1294' FWL (SEC. 8)
BOTTOM HOLE: 50' FSL, 1565' FWL (SEC. 17)

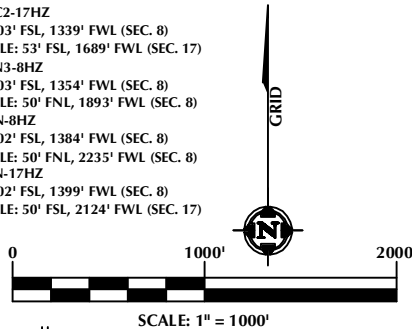
PAPA JO 2-25 29C-8HZ
SURFACE: 1404' FSL, 1309' FWL (SEC. 8)
BOTTOM HOLE: 50' FNL, 1635' FWL (SEC. 8)

PAPA JO 2-25 35C2-17HZ
SURFACE: 1403' FSL, 1339' FWL (SEC. 8)
BOTTOM HOLE: 53' FSL, 1689' FWL (SEC. 17)

PAPA JO 2-25 29N3-8HZ
SURFACE: 1403' FSL, 1354' FWL (SEC. 8)
BOTTOM HOLE: 50' FNL, 1893' FWL (SEC. 8)

PAPA JO 2-25 28N-8HZ
SURFACE: 1402' FSL, 1384' FWL (SEC. 8)
BOTTOM HOLE: 50' FNL, 2235' FWL (SEC. 8)

PAPA JO 2-25 36N-17HZ
SURFACE: 1402' FSL, 1399' FWL (SEC. 8)
BOTTOM HOLE: 50' FSL, 2124' FWL (SEC. 17)



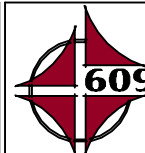
NOTES:

- ▲ INDICATES SECTION CORNER
- INDICATES CALCULATED CORNER
- BASIS OF BEARING DERIVED FROM COLORADO COORDINATE SYSTEM OF 1983 NORTH ZONE.
- ALL MEASURED DISTANCES ARE GRID.
COMBINED SCALE FACTOR: .99972035 CALCULATED FROM THE S. 1/4 CORNER OF SECTION 17, T1N, R68W
WELL FOOTAGES ARE MEASURED AT RIGHT ANGLES TO THE SECTION LINES.

WELL PAD - PAPA JO 2-25 35N2-17HZ

MULTI-WELL PLAN
PAPA JO 2-25 35C-17HZ, PAPA JO 2-25 29N-8HZ,
PAPA JO 2-25 35N-17HZ, PAPA JO 2-25 29N2-8HZ,
PAPA JO 2-25 35C2-17HZ, PAPA JO 2-25 29N3-8HZ,
PAPA JO 2-25 28N-8HZ & PAPA JO 2-25 36N-17HZ
LOCATED IN SECTIONS 8 & 17
T1N, R68W, 6TH P.M.
WELD COUNTY, COLORADO

**Kerr-McGee Oil &
Gas Onshore L.P.**
1099 18th Street
Denver, Colorado 80202



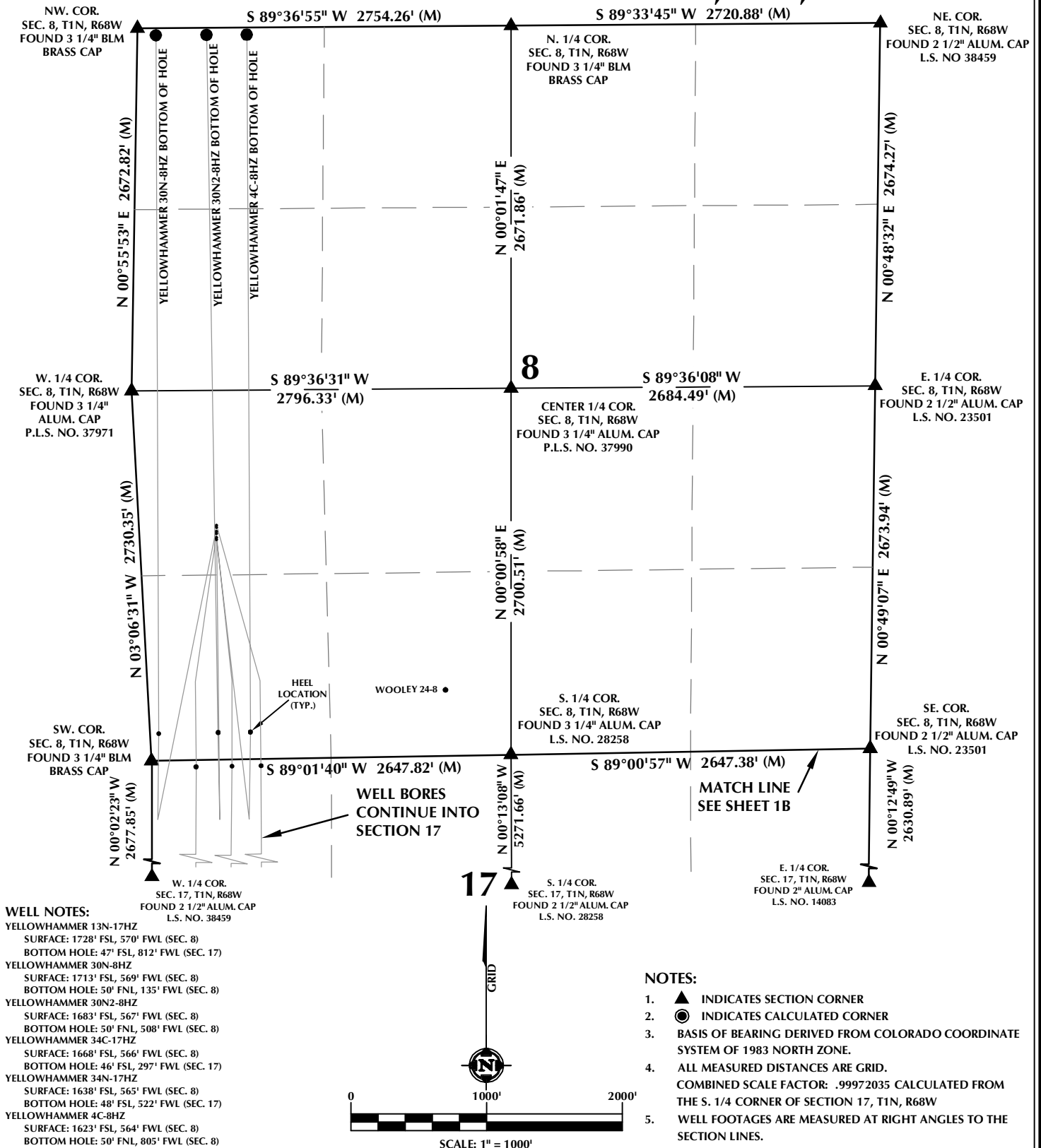
CONSULTING, LLC

SHERIDAN OFFICE
1095 Saberton Avenue
Sheridan, Wyoming 82801
Phone 307-674-0609

LOVELAND OFFICE
1635 Foxtrail Drive, Suite 204
Loveland, Colorado 80538
Phone 970-776-4331

DRAFTED BY:	LMO	CHECKED BY:	RKF	SHEET NO:
DATE DRAFTED:	8/24/16	DATE SURVEYED:	6/30/16	1B
REVISED:		FILE NAME:	16-04	1B OF 1

MULTI-WELL PLAN SECTIONS 8 & 17, T1N, R68W



WELL PAD - YELLOWHAMMER 30N2-8HZ

MULTI-WELL PLAN
YELLOWHAMMER 13N-17HZ, YELLOWHAMMER 30N-8HZ,
YELLOWHAMMER 30N2-8HZ, YELLOWHAMMER 34C-17HZ,
YELLOWHAMMER 34N-17HZ & YELLOWHAMMER 4C-8HZ
LOCATED IN SECTIONS 8 & 17
T1N, R68W, 6TH P.M.
WELD COUNTY, COLORADO

**Kerr-McGee Oil &
Gas Onshore L.P.**
1099 18th Street
Denver, Colorado 80202



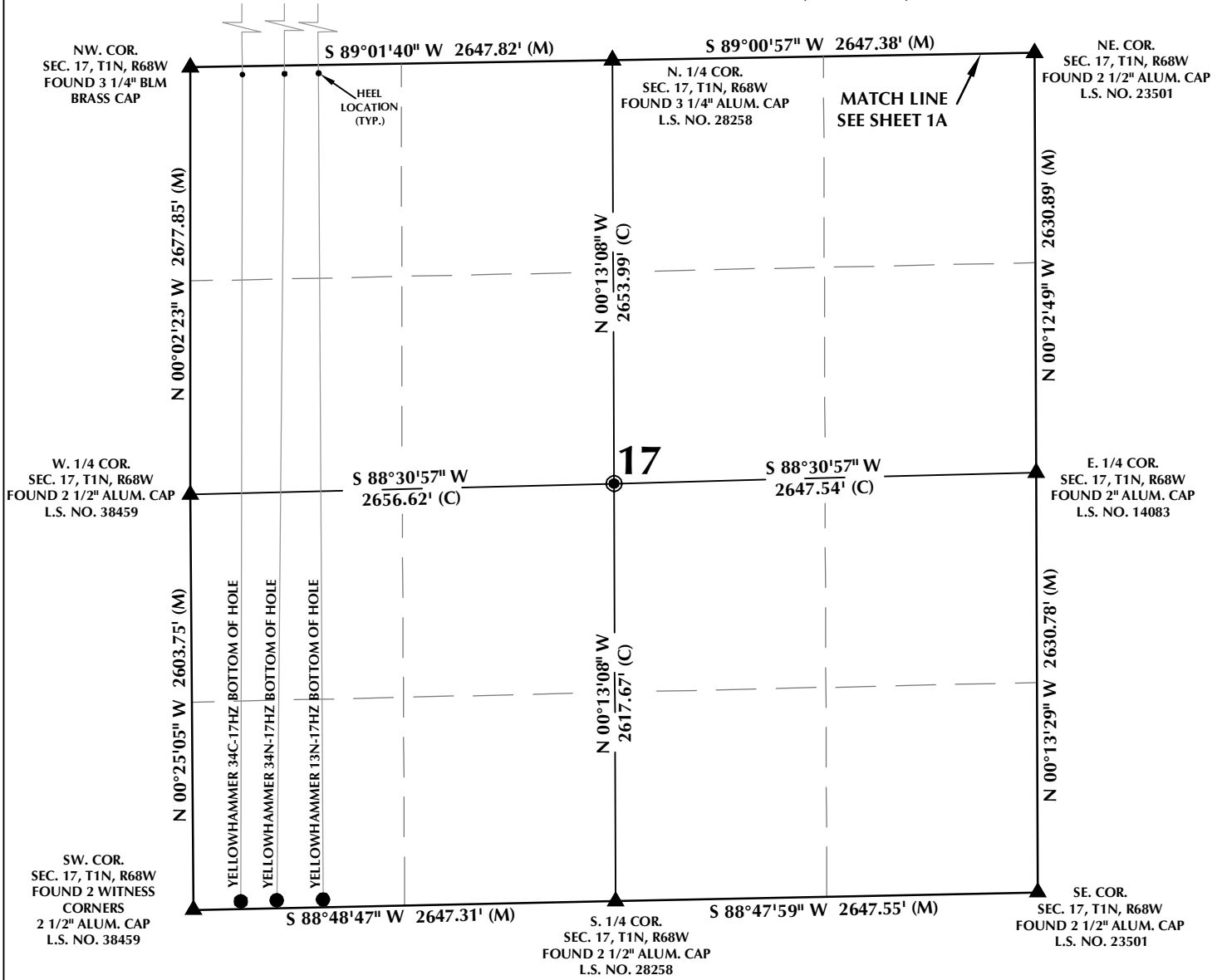
CONSULTING, LLC

SHERIDAN OFFICE
1095 Saberton Avenue
Sheridan, Wyoming 82801
Phone 307-674-0609

LOVELAND OFFICE
1635 Foxtrail Drive, Suite 204
Loveland, Colorado 80538
Phone 970-776-4331

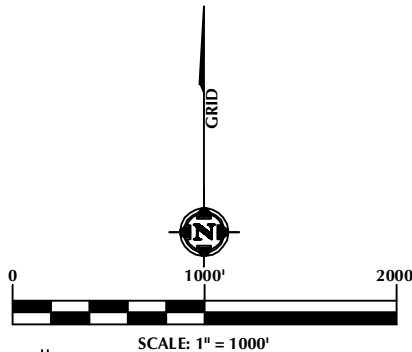
DRAFTED BY:	LMO	CHECKED BY:	RKF	SHEET NO:
DATE DRAFTED:	8/24/16	DATE SURVEYED:	6/30/16	1A
REVISED:	4/17/17	FILE NAME:	16-04	1A OF 1

MULTI-WELL PLAN SECTION 17, T1N, R68W



WELL NOTES:

YELLOWHAMMER 13N-17HZ
 SURFACE: 1728' FSL, 570' FWL (SEC. 8)
 BOTTOM HOLE: 47' FSL, 812' FWL (SEC. 17)
 YELLOWHAMMER 30N-8HZ
 SURFACE: 1713' FSL, 569' FWL (SEC. 8)
 BOTTOM HOLE: 50' FNL, 135' FWL (SEC. 8)
 YELLOWHAMMER 30N2-8HZ
 SURFACE: 1683' FSL, 567' FWL (SEC. 8)
 BOTTOM HOLE: 50' FNL, 508' FWL (SEC. 8)
 YELLOWHAMMER 34C-17HZ
 SURFACE: 1668' FSL, 566' FWL (SEC. 8)
 BOTTOM HOLE: 46' FSL, 297' FWL (SEC. 17)
 YELLOWHAMMER 34N-17HZ
 SURFACE: 1638' FSL, 565' FWL (SEC. 8)
 BOTTOM HOLE: 48' FSL, 522' FWL (SEC. 17)
 YELLOWHAMMER 4C-8HZ
 SURFACE: 1623' FSL, 564' FWL (SEC. 8)
 BOTTOM HOLE: 50' FNL, 805' FWL (SEC. 8)



NOTES:

- ▲ INDICATES SECTION CORNER
- INDICATES CALCULATED CORNER
- BASIS OF BEARING DERIVED FROM COLORADO COORDINATE SYSTEM OF 1983 NORTH ZONE.
- ALL MEASURED DISTANCES ARE GRID.
 COMBINED SCALE FACTOR: .99972035 CALCULATED FROM THE S. 1/4 CORNER OF SECTION 17, T1N, R68W
 WELL FOOTAGES ARE MEASURED AT RIGHT ANGLES TO THE SECTION LINES.

WELL PAD - YELLOWHAMMER 30N2-8HZ

MULTI-WELL PLAN
 YELLOWHAMMER 13N-17HZ, YELLOWHAMMER 30N-8HZ,
 YELLOWHAMMER 30N2-8HZ, YELLOWHAMMER 34C-17HZ,
 YELLOWHAMMER 34N-17HZ & YELLOWHAMMER 4C-8HZ
 LOCATED IN SECTIONS 8 & 17
 T1N, R68W, 6TH P.M.
 WELD COUNTY, COLORADO

**Kerr-McGee Oil &
 Gas Onshore L.P.**
 1099 18th Street
 Denver, Colorado 80202



CONSULTING, LLC

SHERIDAN OFFICE
 1095 Saberton Avenue
 Sheridan, Wyoming 82801
 Phone 307-674-0609

LOVELAND OFFICE
 1635 Foxtrail Drive, Suite 204
 Loveland, Colorado 80538
 Phone 970-776-4331

DRAFTED BY:	LMO	CHECKED BY:	RKF	SHEET NO:
DATE DRAFTED:	8/24/16	DATE SURVEYED:	6/30/16	1B
REVISED:		FILE NAME:	16-04	1B OF 1