 Weatherford®				RAPTOR NVISION LOG							
COMPANY WELL FIELD PROVINCE/COUNTY COUNTRY/STATE LOCATION				CAERUS OIL & GAS PUCKETT 34D-23 GRAND VALLEY GARFIELD USA / COLORADO							
SEC 23		TWP 06S	RGE 97W	Other Services SBT							
Latitude		Longitude		Permanent Datum GROUND LEVEL, Elevation 8396 feet Log Measured From KB, 30.00 feet above Permanent Datum Drilling Measured From KB							
API Number											
Permanent Datum GROUND LEVEL, Elevation 8396 feet											
Log Measured From KB, 30.00 feet above Permanent Datum											
Drilling Measured From KB				Elevations: KB 8426.00 DF 8426.00 GL 8396.00							
Date		19-MAY-2017		PERFORATION RECORD							
Run Number		ONE		Shot		Number		Depth From		Depth To	
Service Order		182408938		Density		of Shots		feet		feet	
Type Log		CREB									
Depth Driller		9197.00									
Depth Logger		9088.00									
Top Log Interval		5000.00									
Bottom Log Interval		9088.00									
Hole Fluid Type		WATER									
Hole Fluid Level		0.00									
Restriction ID		3.875									
Max Recorded Temp		235.00		deg F							
Well Head Pressure		0.00		psi							
Well Head Equipment		N/A									
Time Well Ready		ROA		Size inches		Weight pounds/ft		Depth From feet		Depth To feet	
Time Logger Bottom		0030		4.500		11.60		0.00		8976.00	
Unit		14333									
Equipment Name		WSS-E									
Base		CASPER									
Recorded By		P. MAZUR									
Witnessed By		NOT WITNESSED									

CASING / TUBING RECORD						
Type	Grade	TypeJoint	Size inches	Depth From feet	Shoe Depth feet	Weight pounds/ft
			4.500	0.00	8976.00	11.60

REMARKS
SOFTWARE VERSION 17.01.6744 - DEVELOPMENT BUILD VERSION
ALL DEPTH CONTROL PROCEDURES FOR SUBSEQUENT RUN IN HOLE WERE FOLLOWED. LOG RUN FROM 30' K.B.
SURFACE SYSTEM USED: WCM-D 307
TOOLS RUN: WCCC, UGRK, QPGE, TMPN, CRPB, CRMB, UGRK WERE RAN IN COMBINATION
GAMMA RAY COUNTS ON SUBSEQUENT PASSES ARE AFFECTED BY RESIDUAL NEUTRON ACTIVATION CAUSED BY THE PREVIOUS PASS
BOTTOM HOLE TEMPERATURE WAS DEG. 235F

In interpreting, communicating or providing information and/or making recommendations, either written or oral, as to logs or test or other data, type or amount of material, or Work or other service to be furnished, or manner of performance, or in predicting results to be obtained, the Contractor will give the Company the benefit of the Contractor's best judgment based on its experience and will perform all such Work in a good and workmanlike manner. Any interpretation of test or other data, and any recommendation or reservoir description based upon such interpretations, are opinions based upon inferences from measurements and empirical relationships and assumptions, which inferences and assumptions are not infallible, and with respect to which professional engineers and analysts may differ. ACCORDINGLY ANY INTERPRETATION OR RECOMMENDATION RESULTING FROM THE SERVICES WILL BE AT THE SOLE RISK OF THE COMPANY, AND THE CONTRACTOR CANNOT AND DOES NOT WARRANT THE ACCURACY, CORRECTNESS OR COMPLETENESS OF ANY SUCH

INTERPRETATION OR RECOMMENDATION, WHICH INTERPRETATIONS AND RECOMMENDATIONS SHOULD NOT, THEREFORE, UNDER ANY CIRCUMSTANCES BE RELIED UPON AS THE SOLE OR MAIN BASIS FOR ANY DRILLING, COMPLETION, WELL TREATMENT, PRODUCTION OR FINANCIAL DECISION, OR ANY PROCEDURE INVOLVING ANY RISK TO THE SAFETY OF ANY DRILLING ACTIVITY, DRILLING RIG OR ITS CREW OR ANY OTHER INDIVIDUAL. THE COMPANY HAS FULL RESPONSIBILITY FOR ALL DECISIONS CONCERNING THE SERVICES.

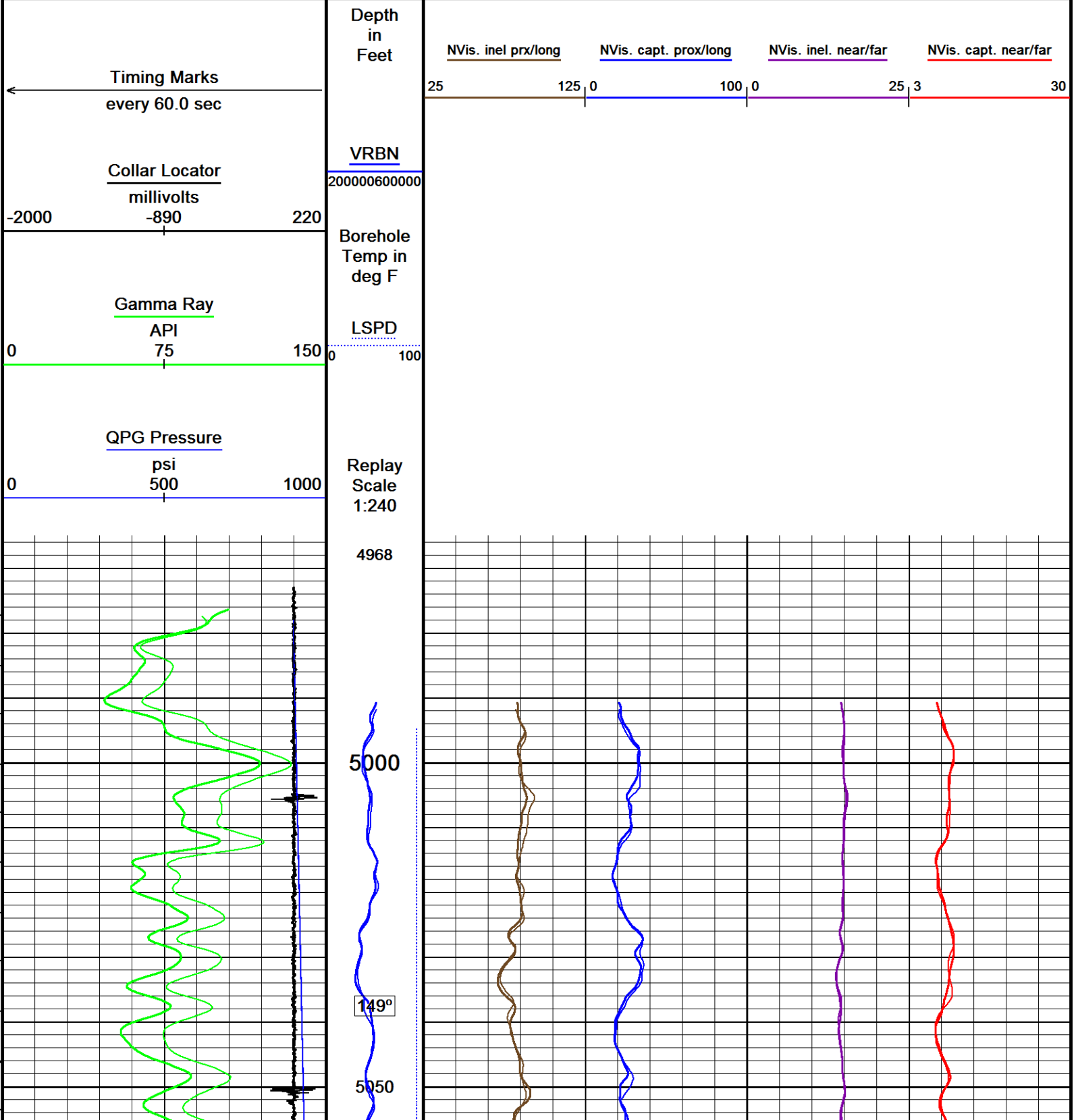
↓

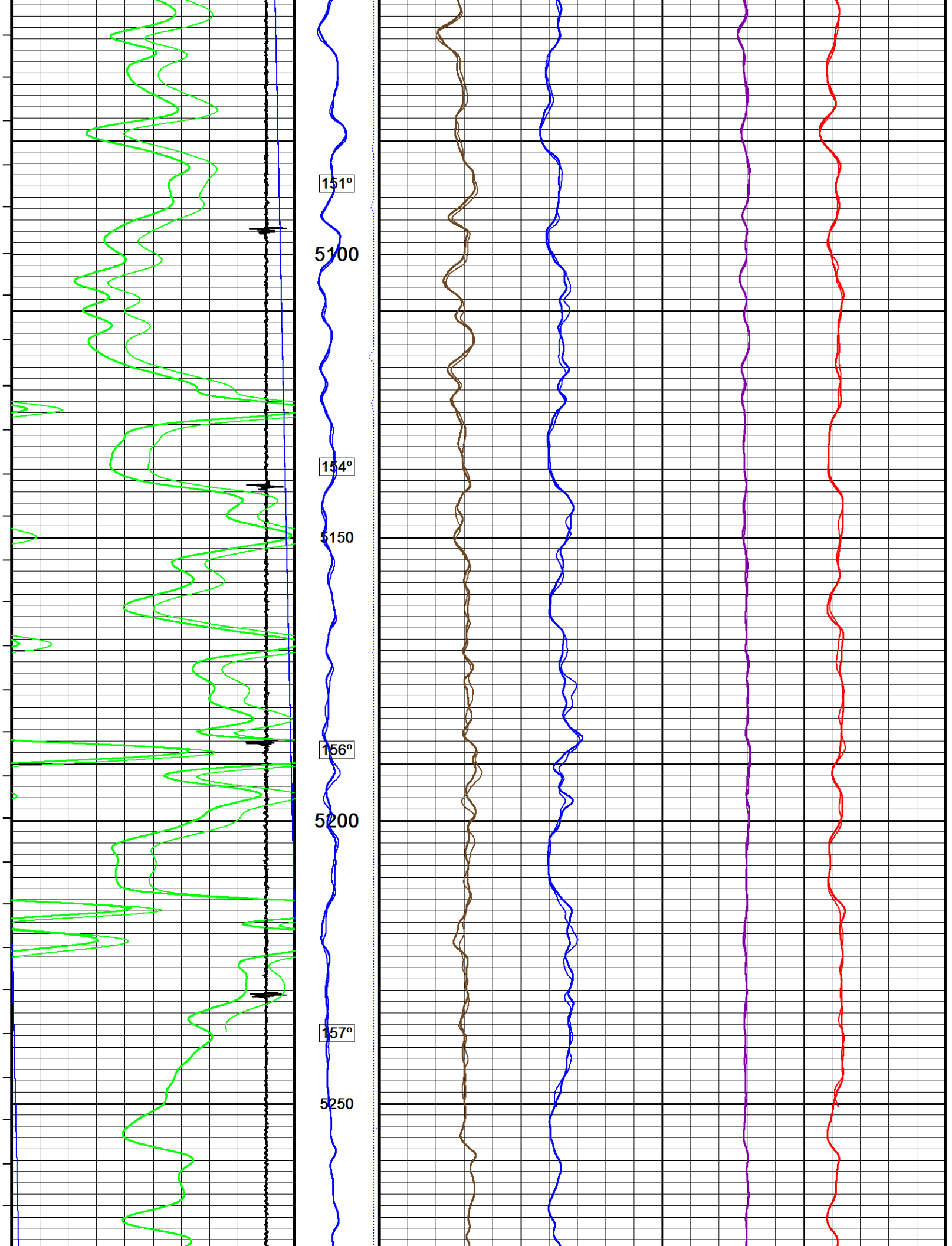
MAIN PASS
REPEAT PASS

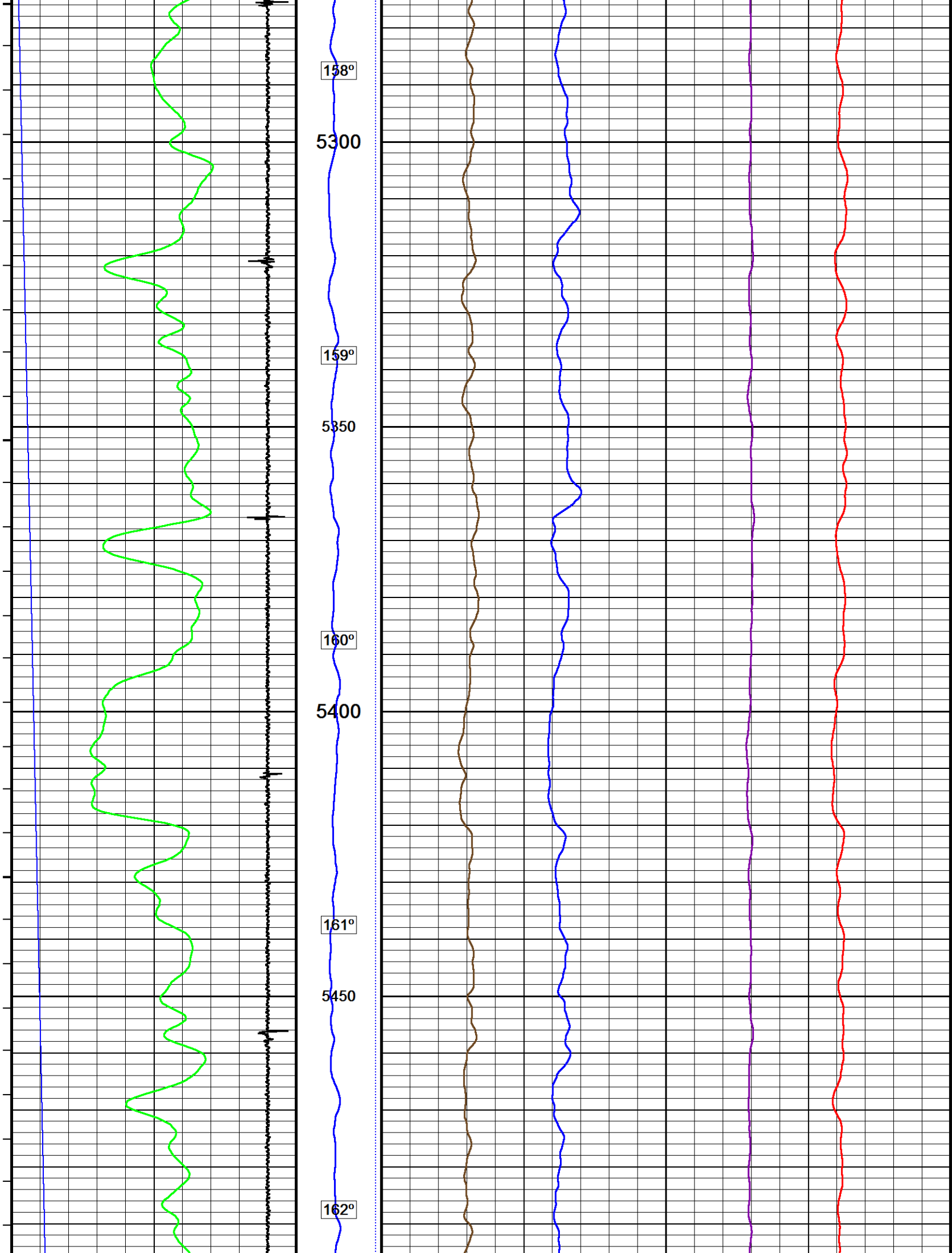
↓

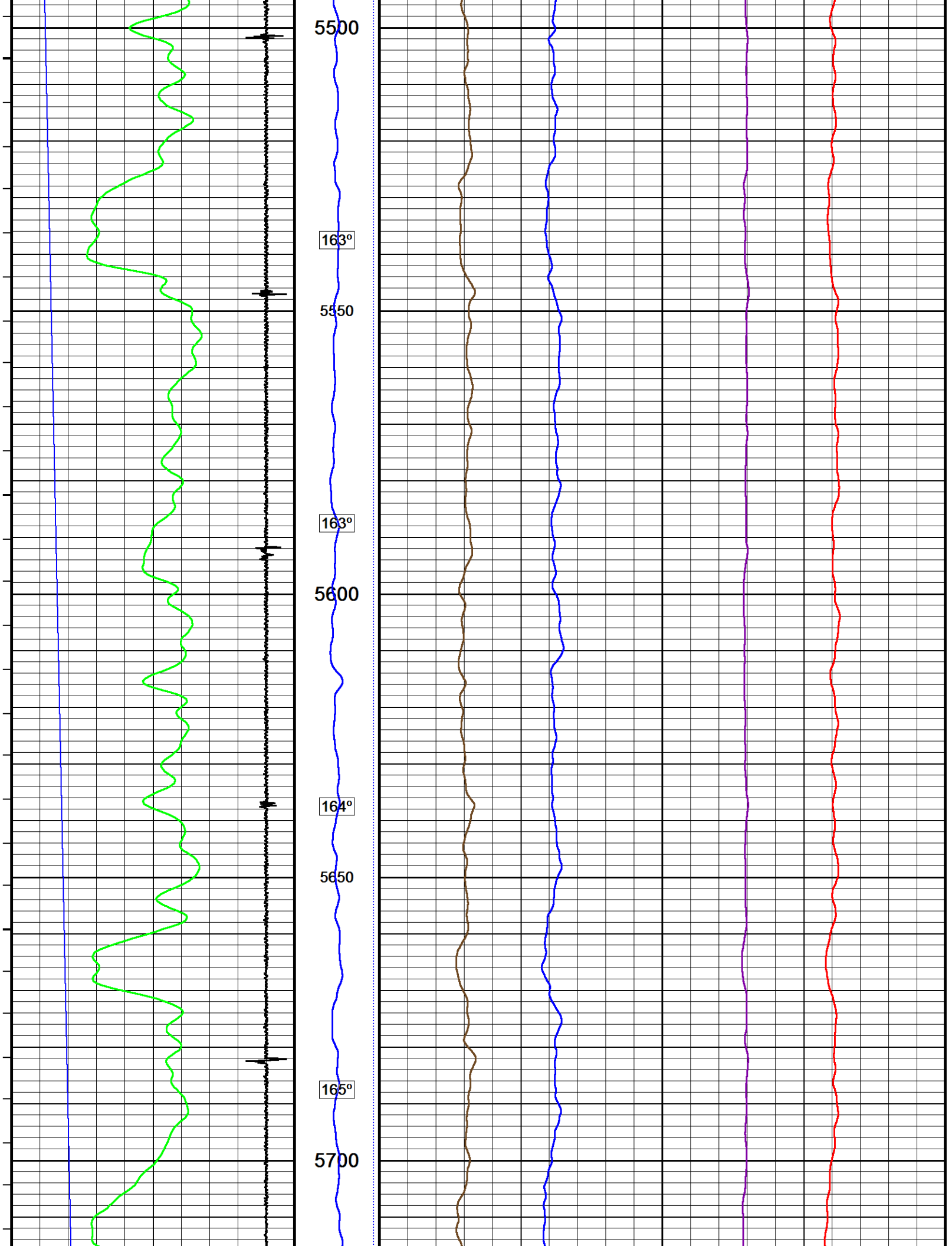
Depth Based Data - Maximum Sampling Increment 12.5cm
Filename: F:\PUCKETT_34D_23_CRE\PUCKETT_34D_23_CREB_NVISION_MAIN.dta
Filename: F:\PUCKETT_34D_23_CRE\PUCKETT_34D_23_CREB_NVISION_REPEAT.dta
System Versions: Logged with 17.01.6744 Plotted with 17.01.6744

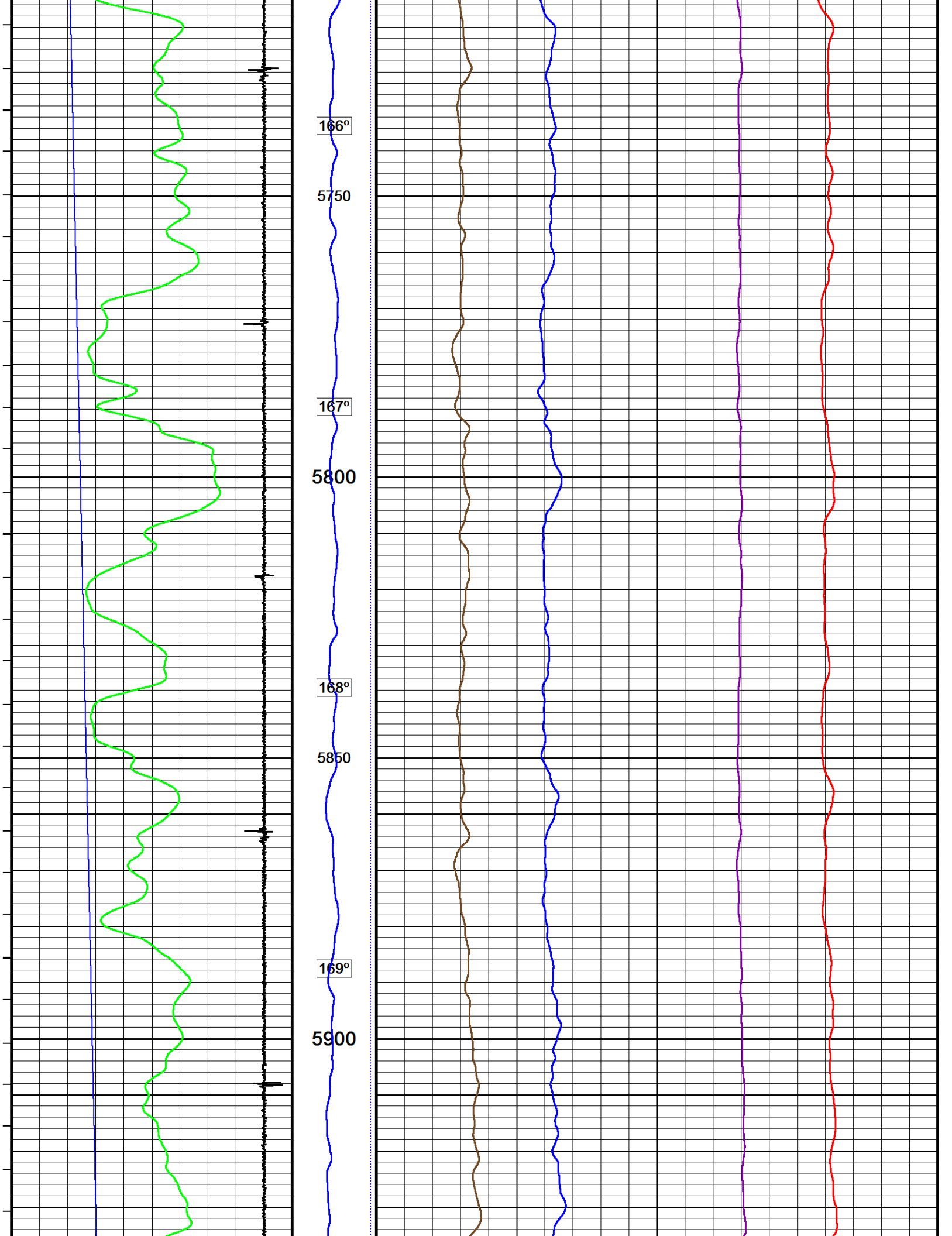
Plotted on 19-MAY-2017 20:39
Recorded on 19-MAY-2017 00:35
Recorded on 19-MAY-2017 10:07

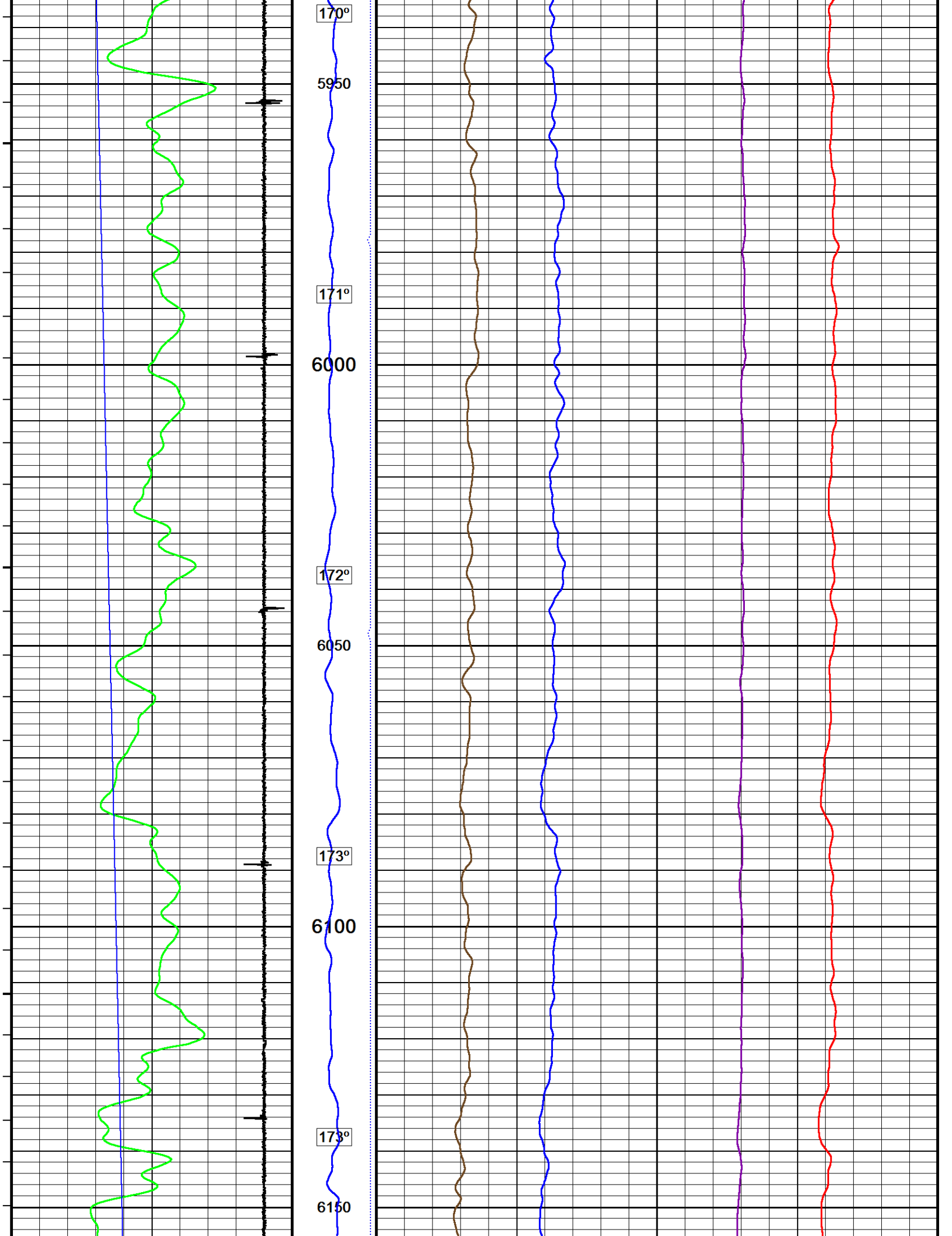


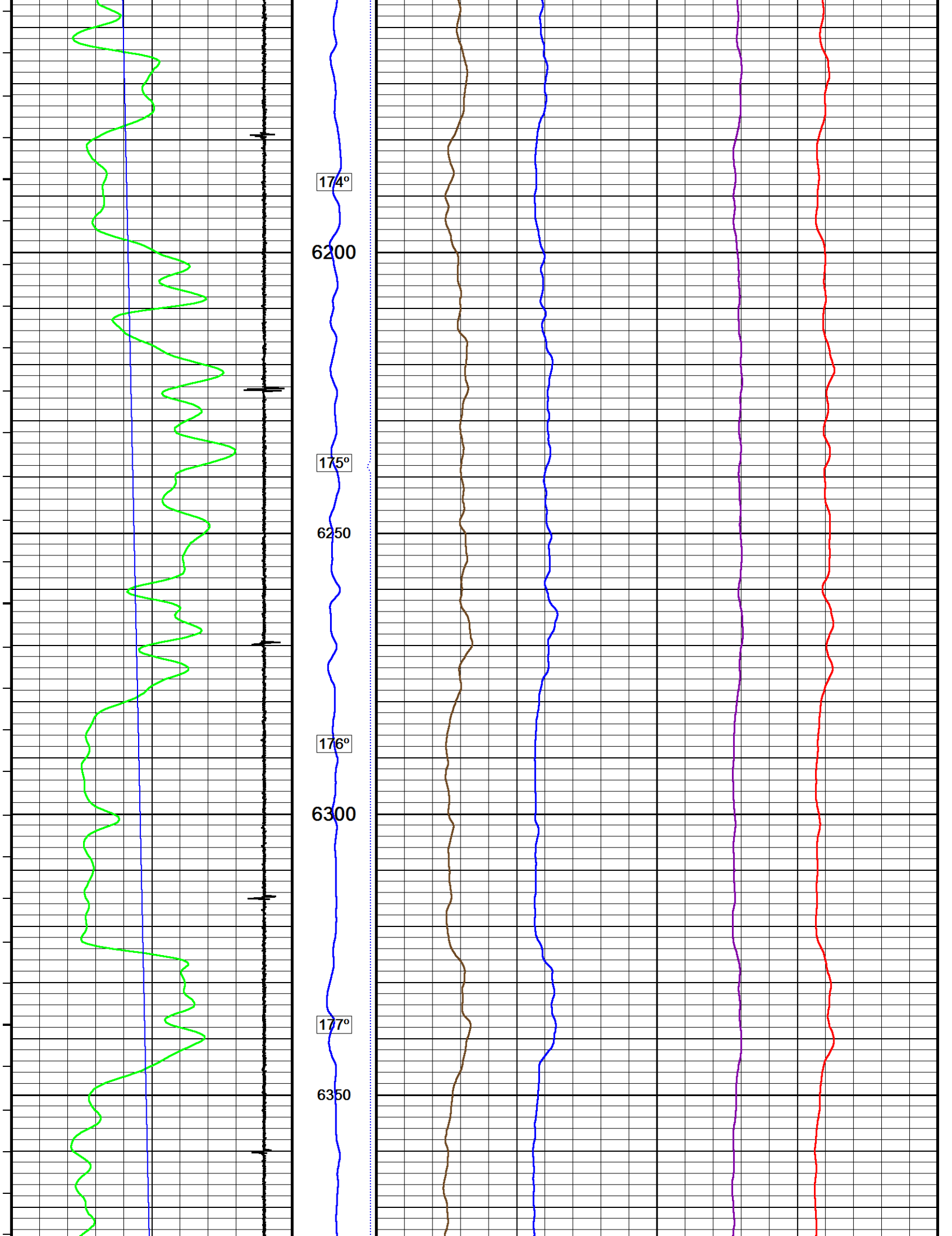


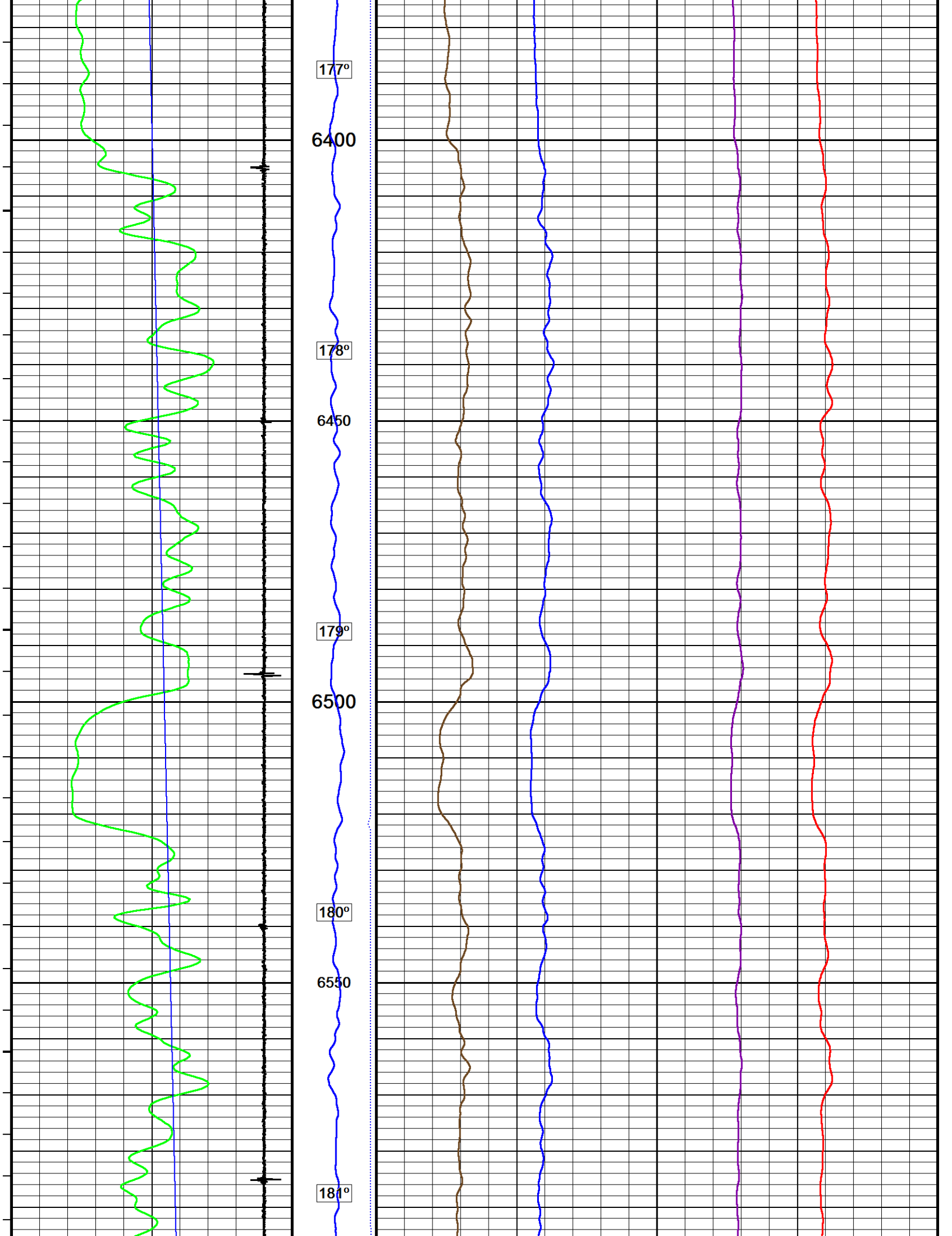


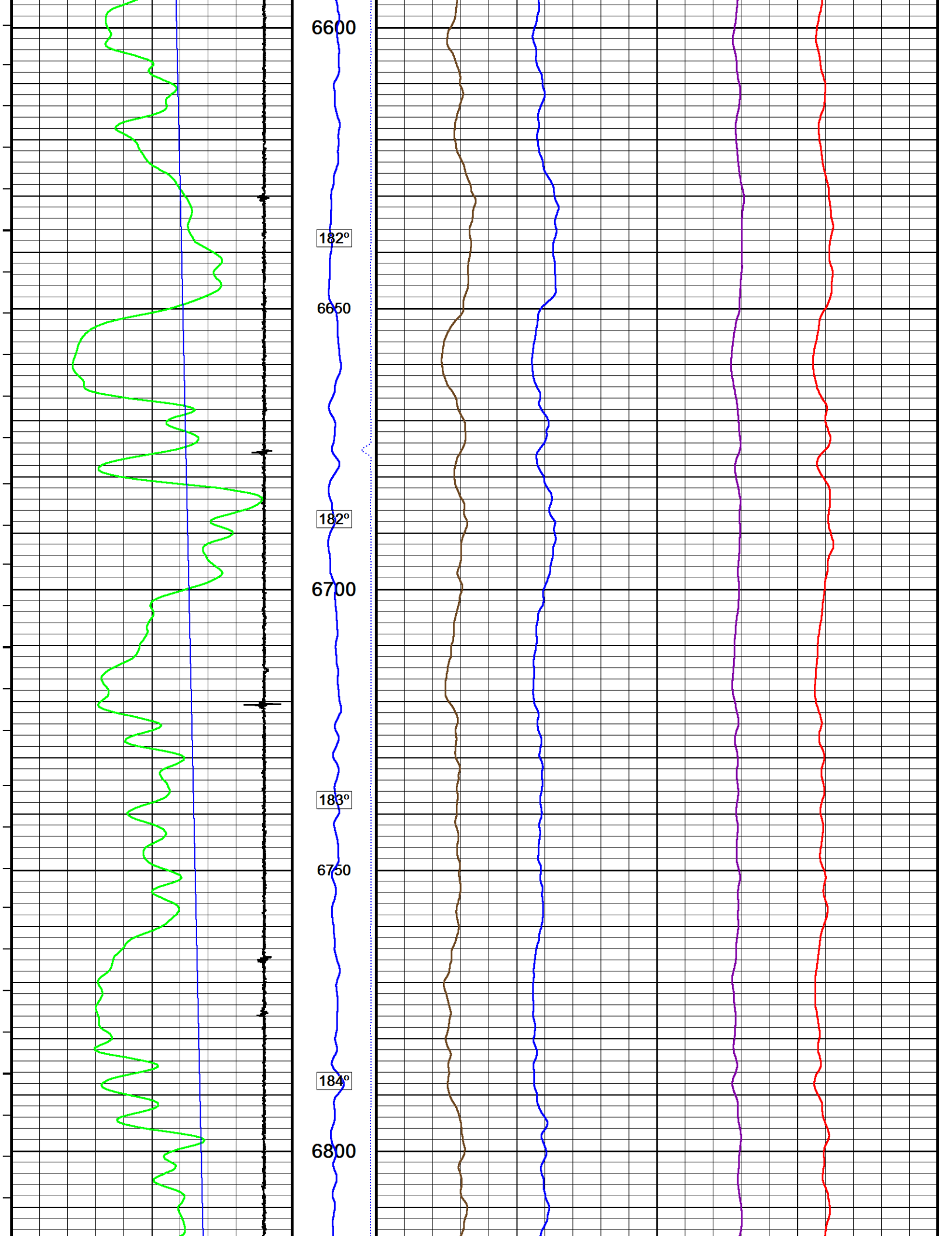


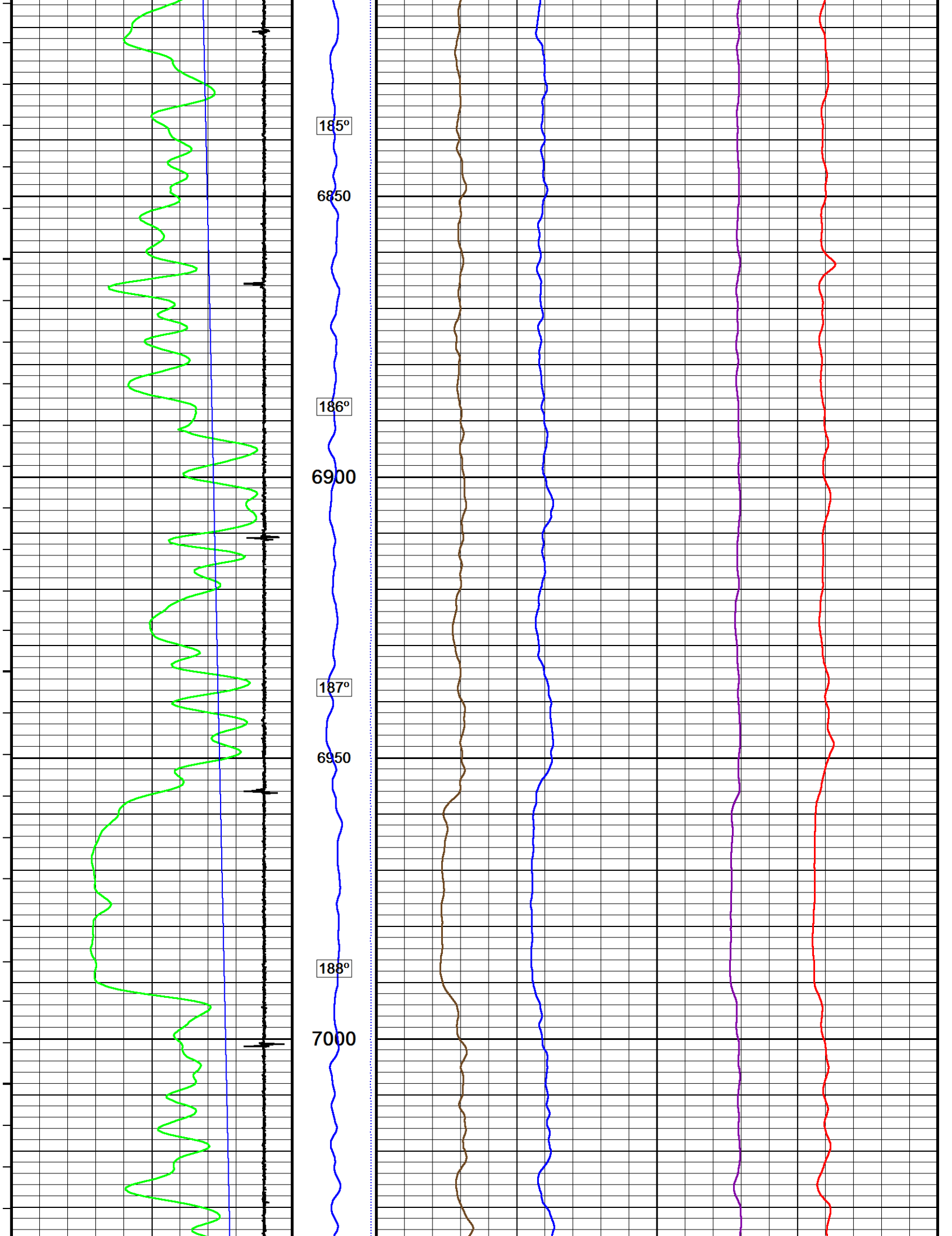


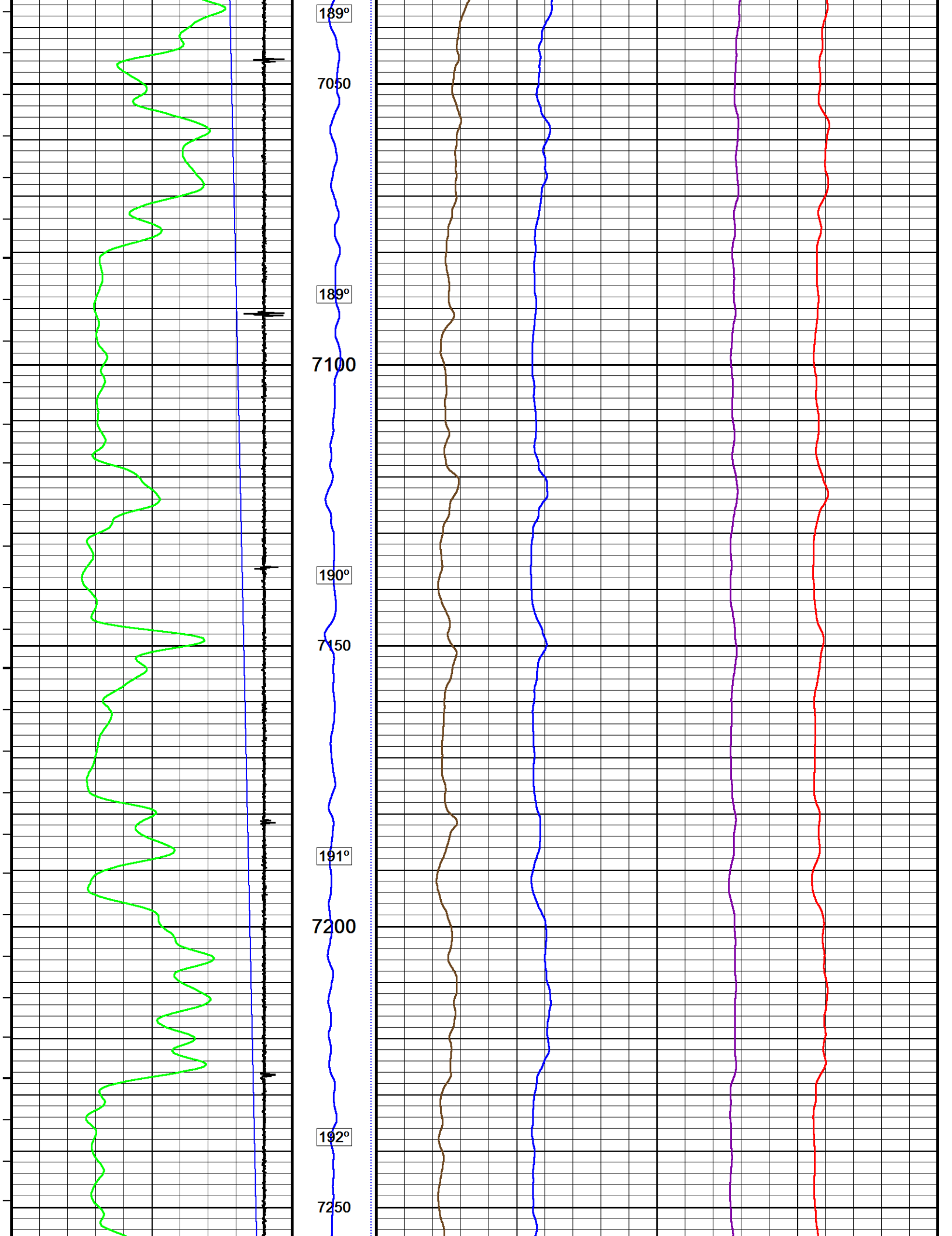


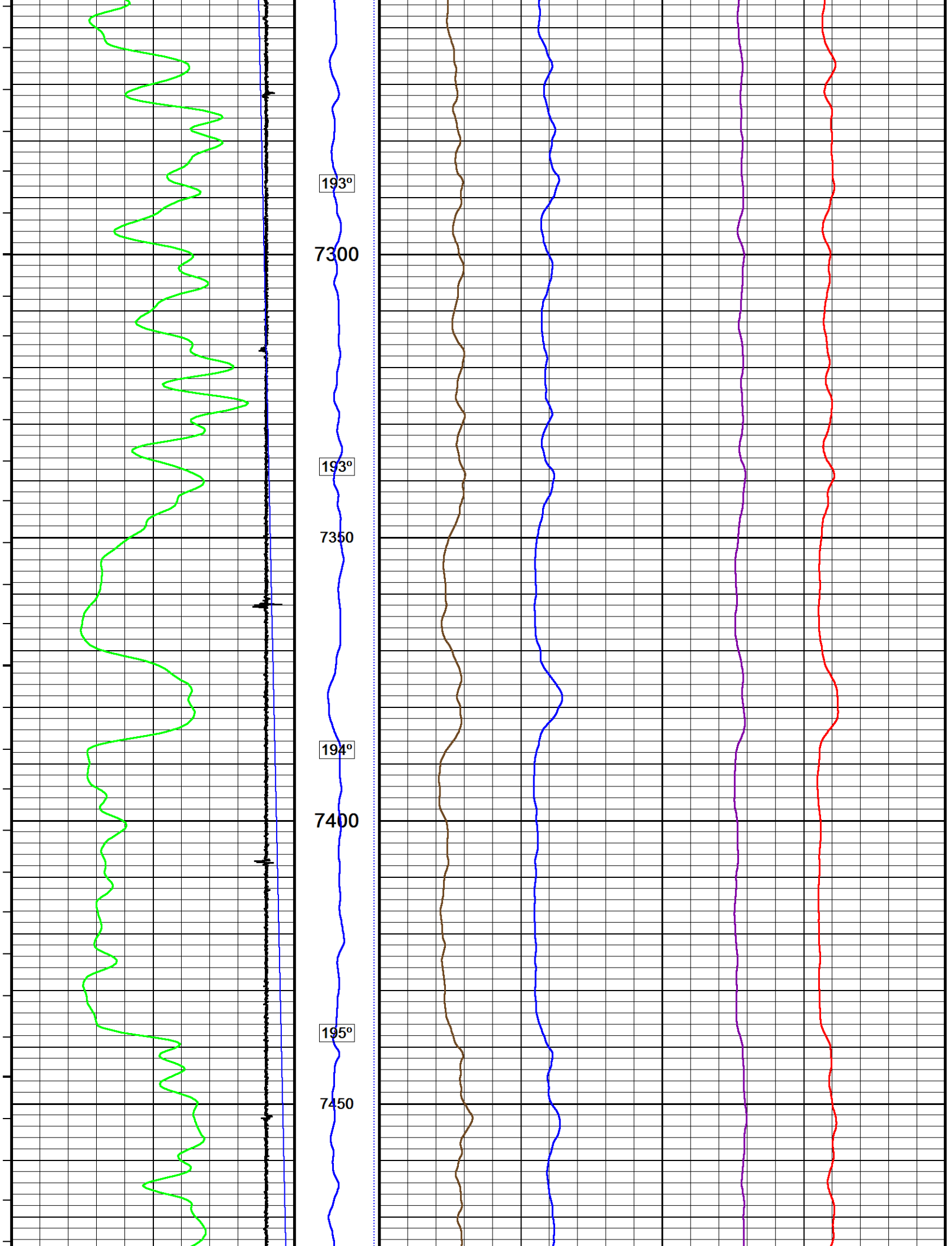


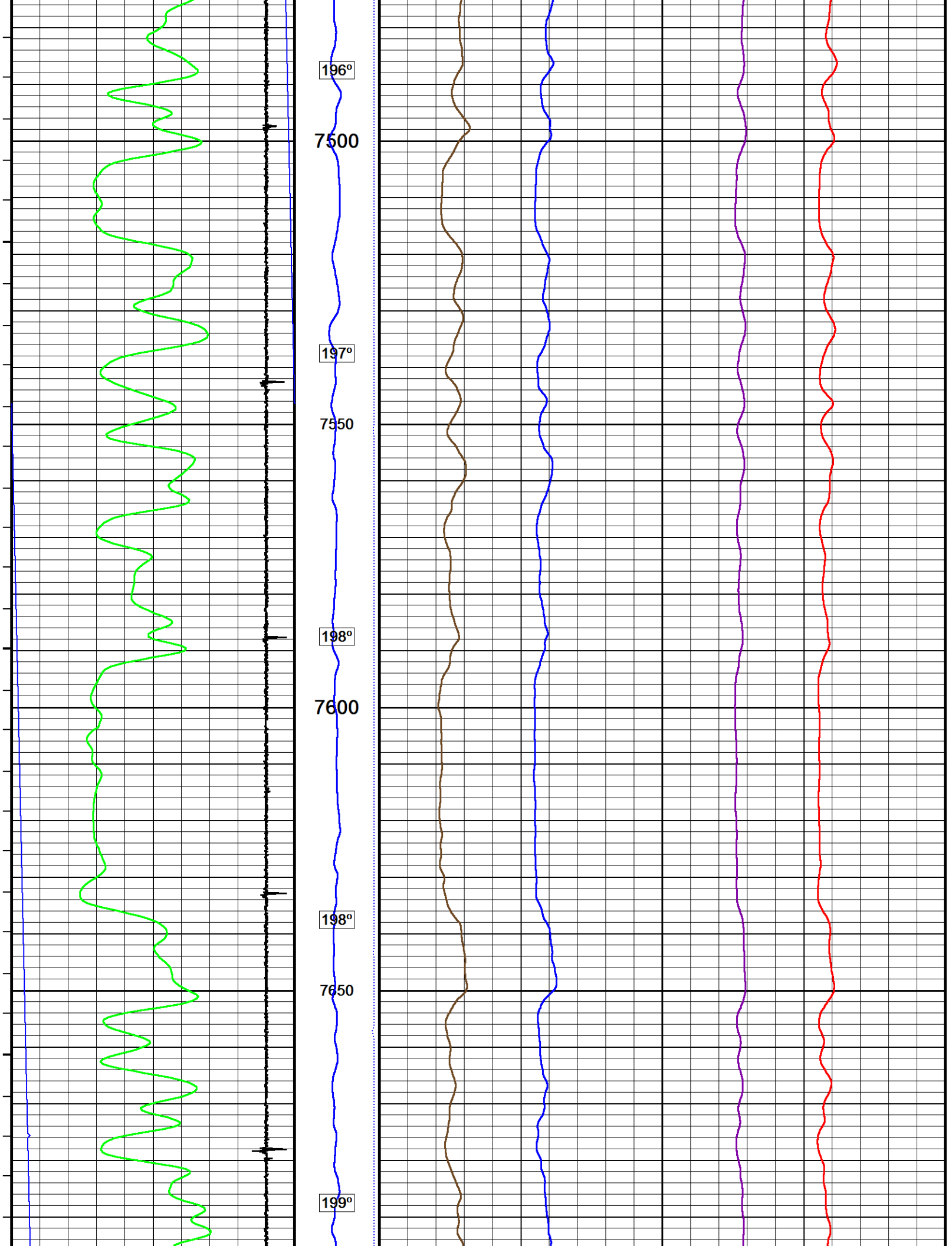


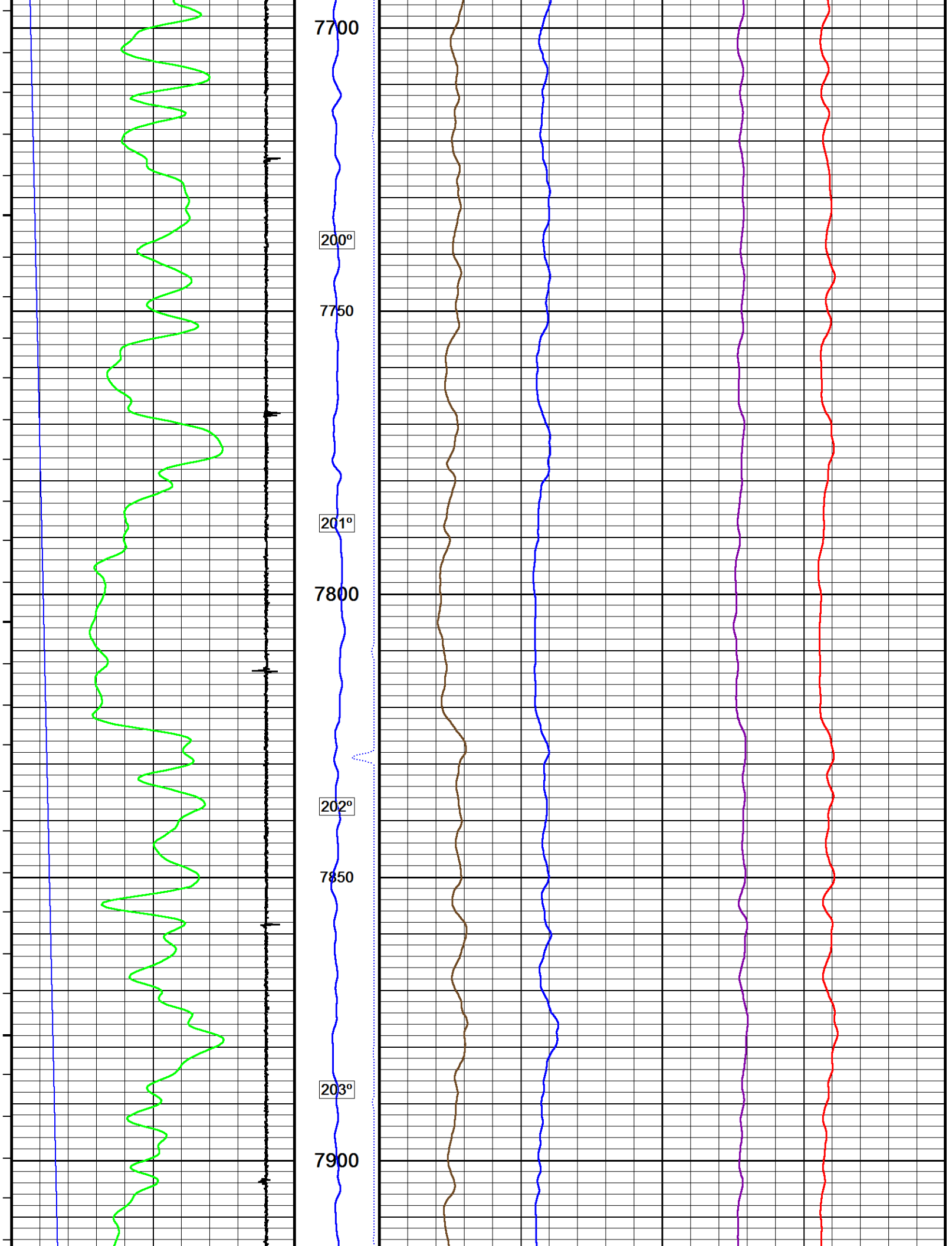


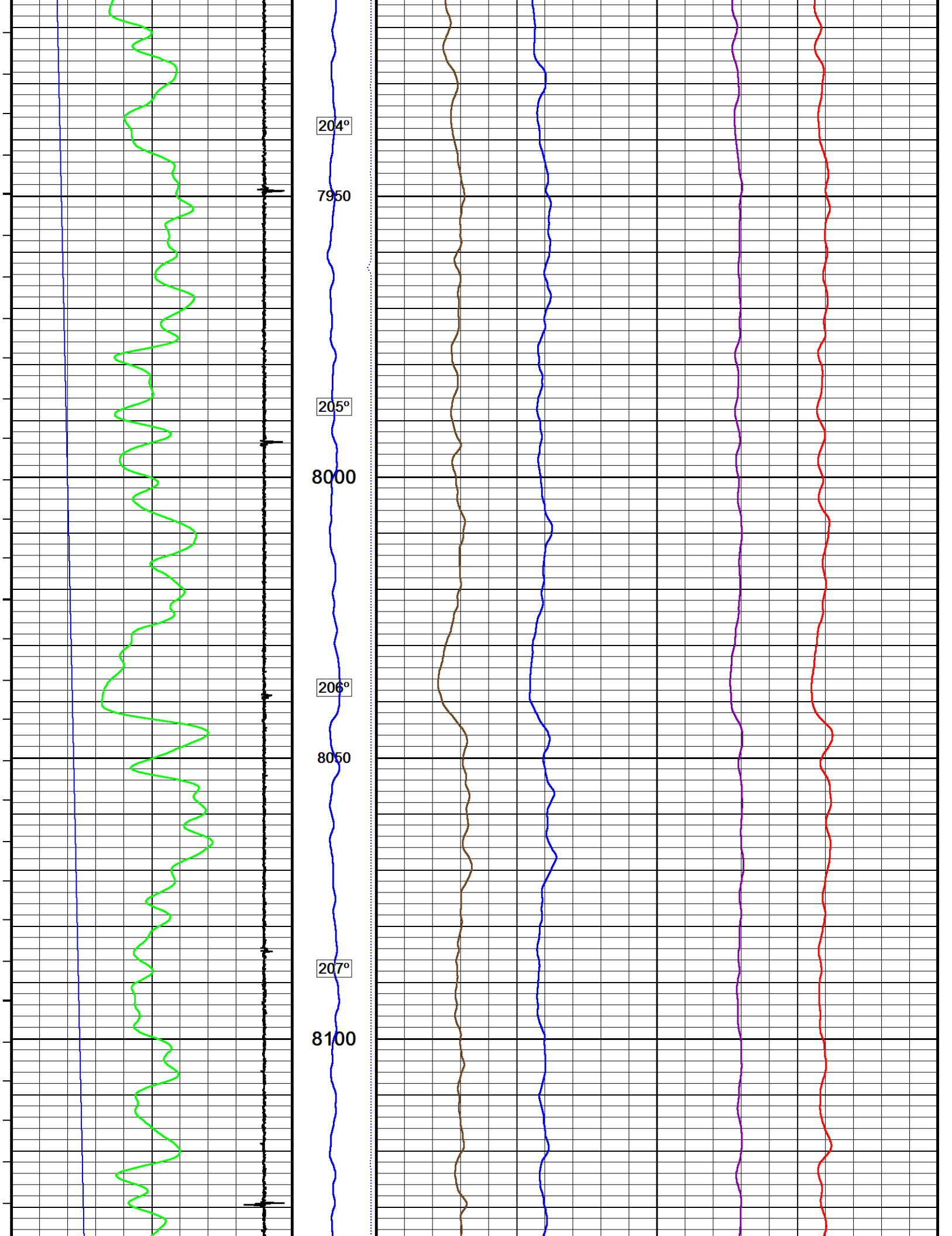


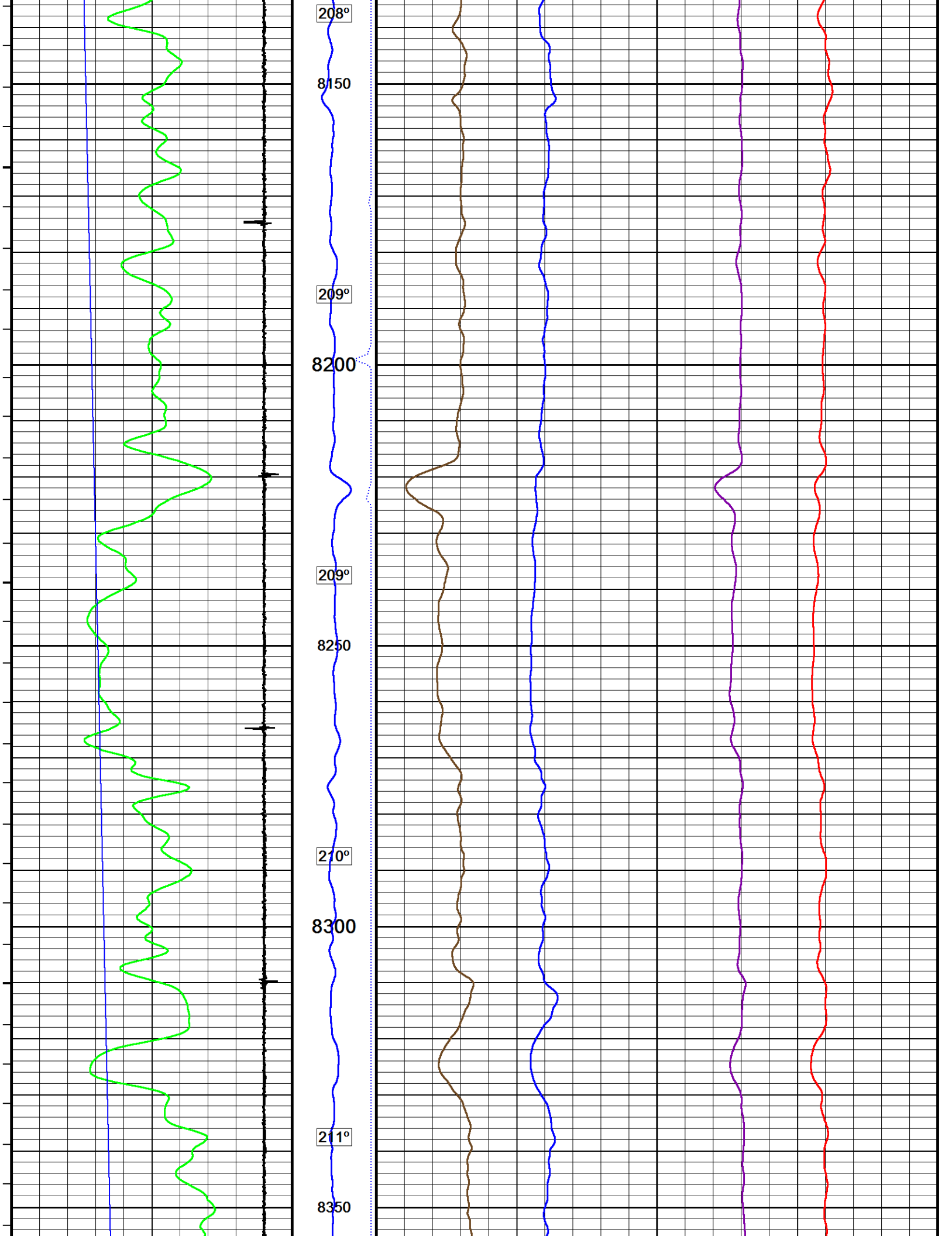


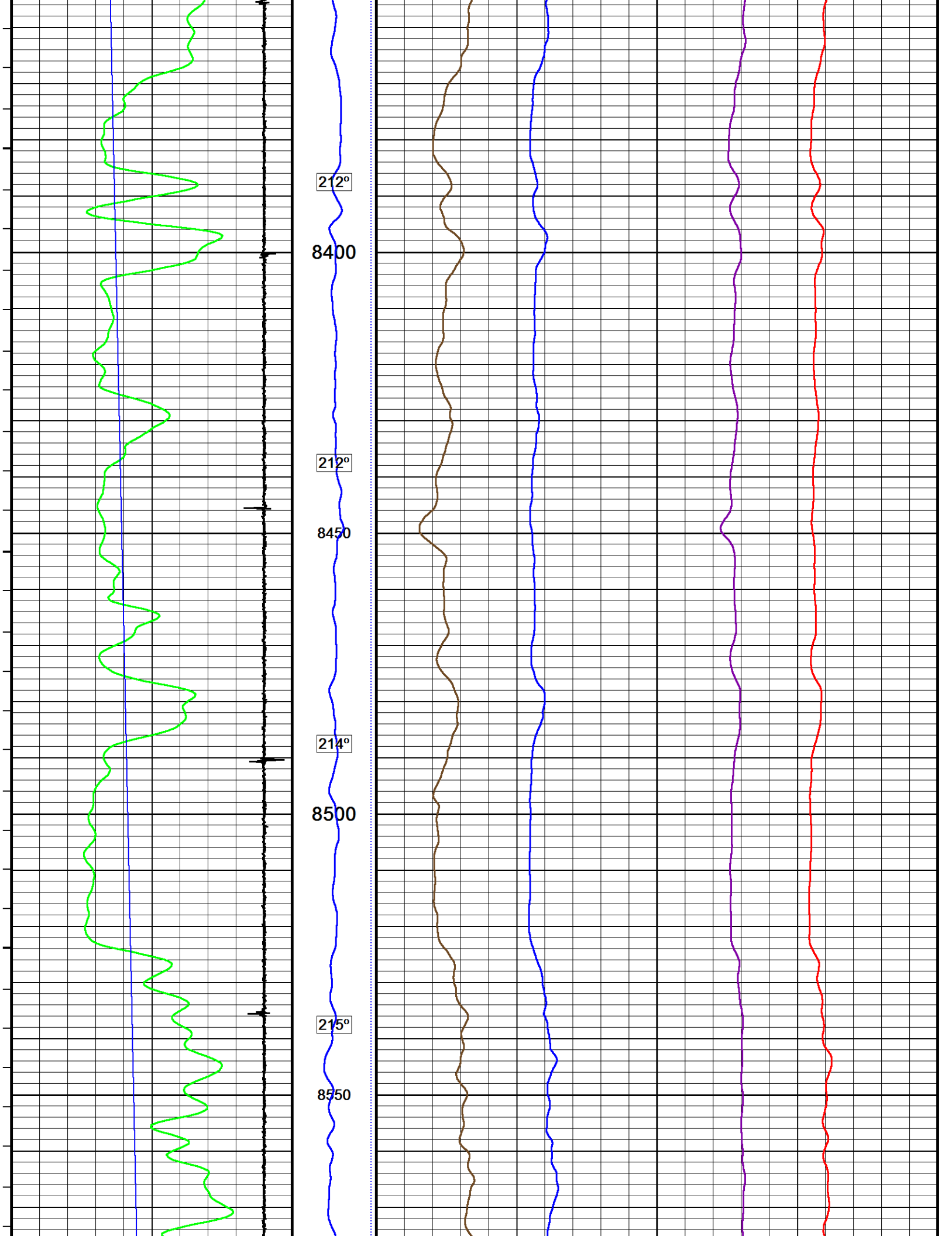


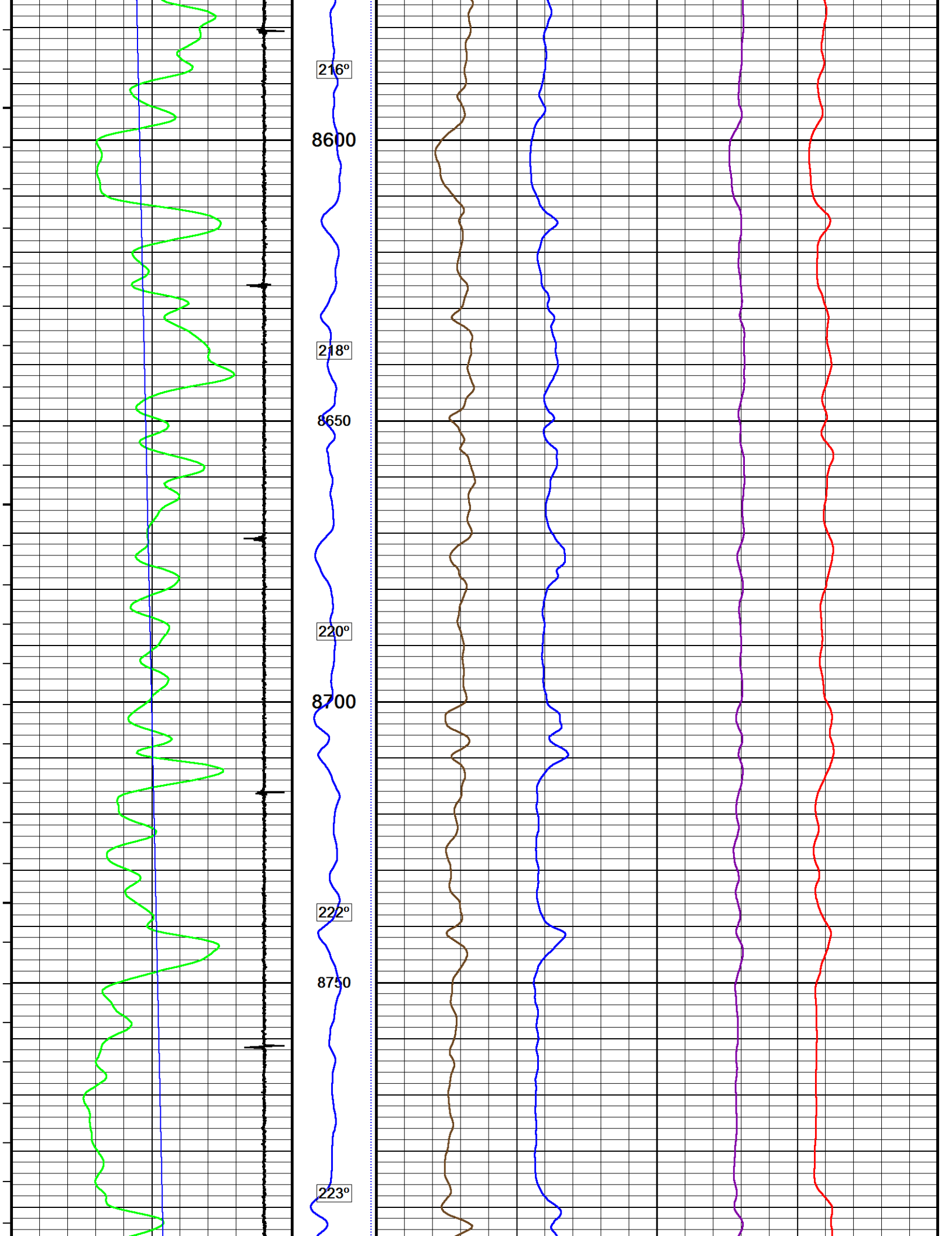


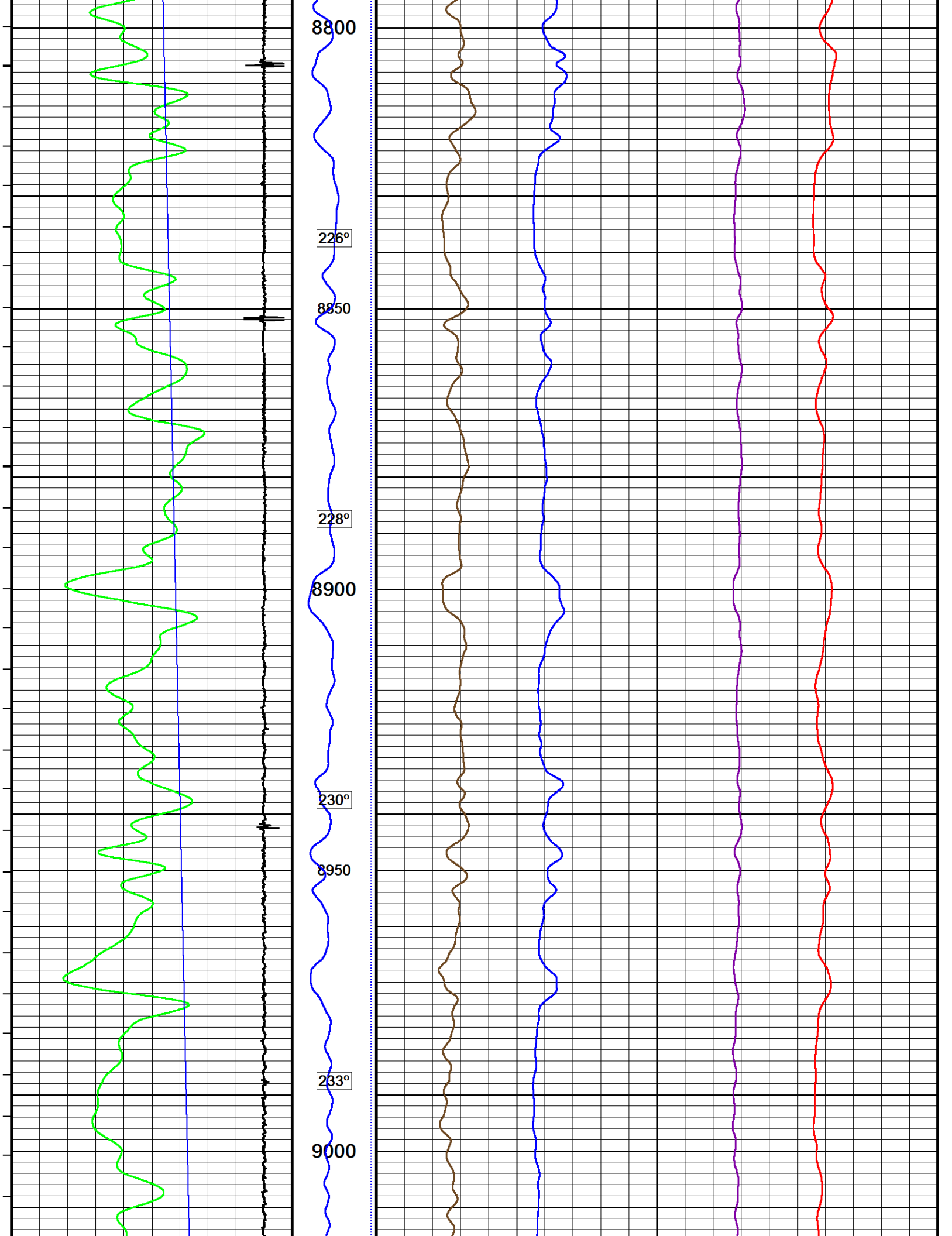


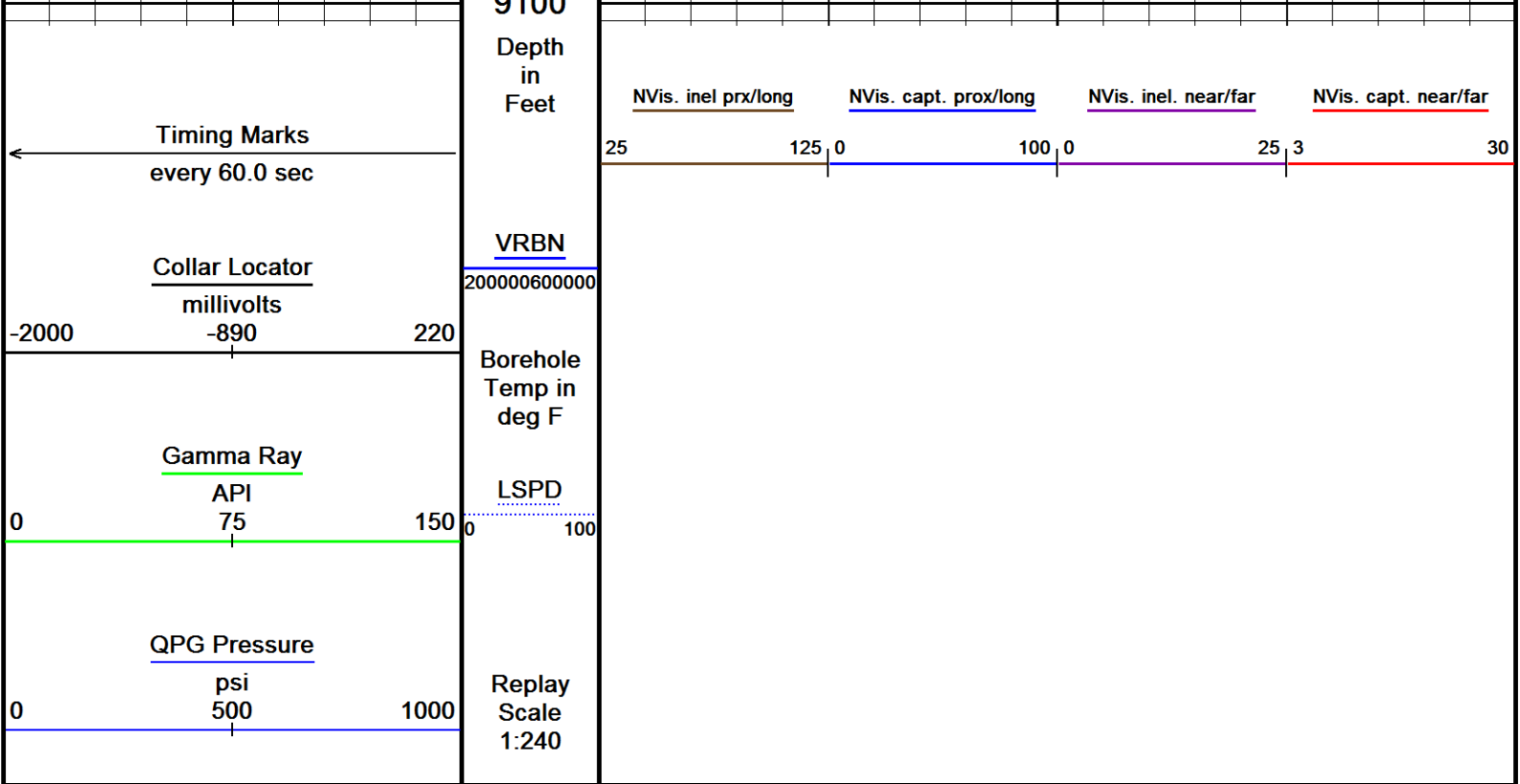
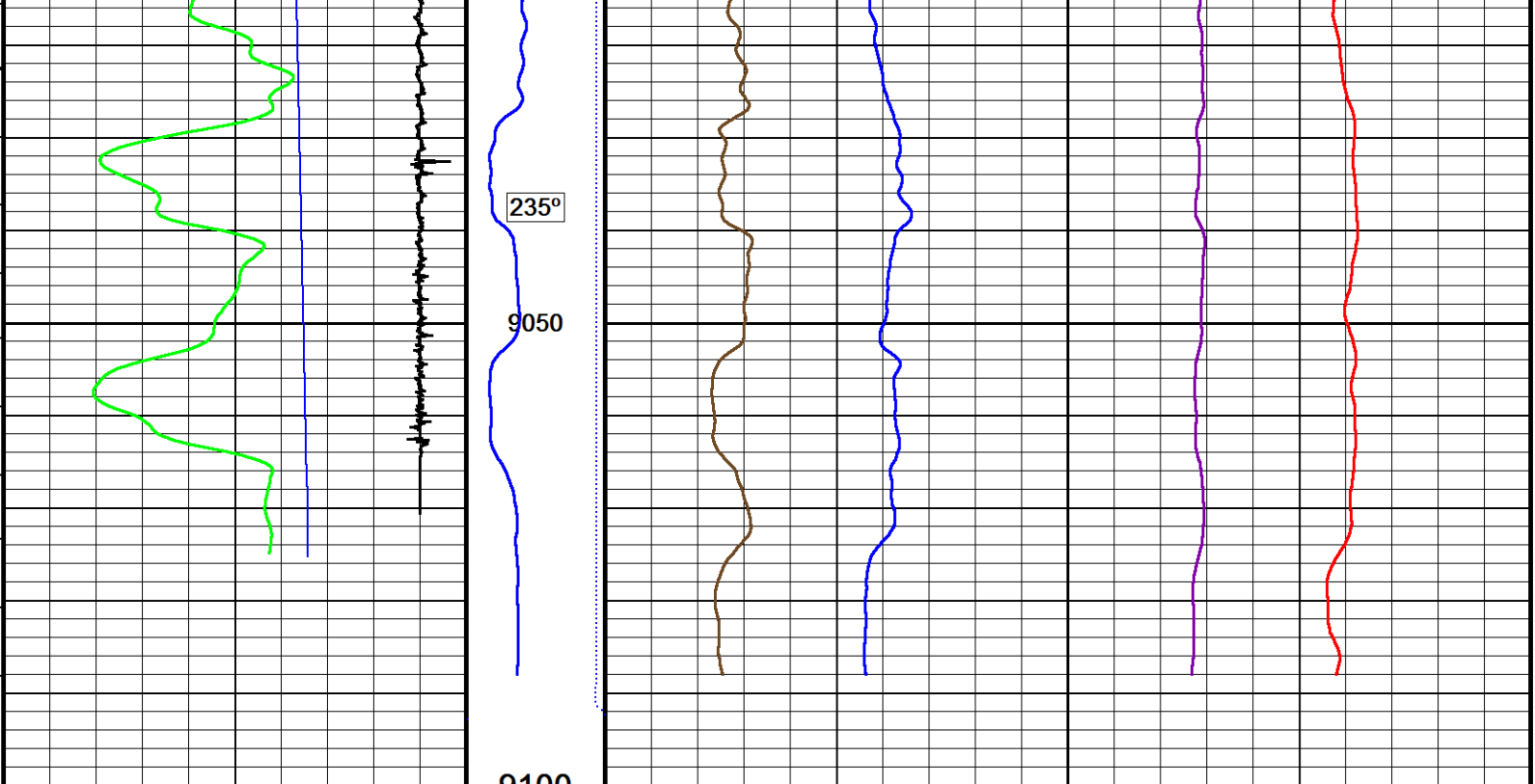












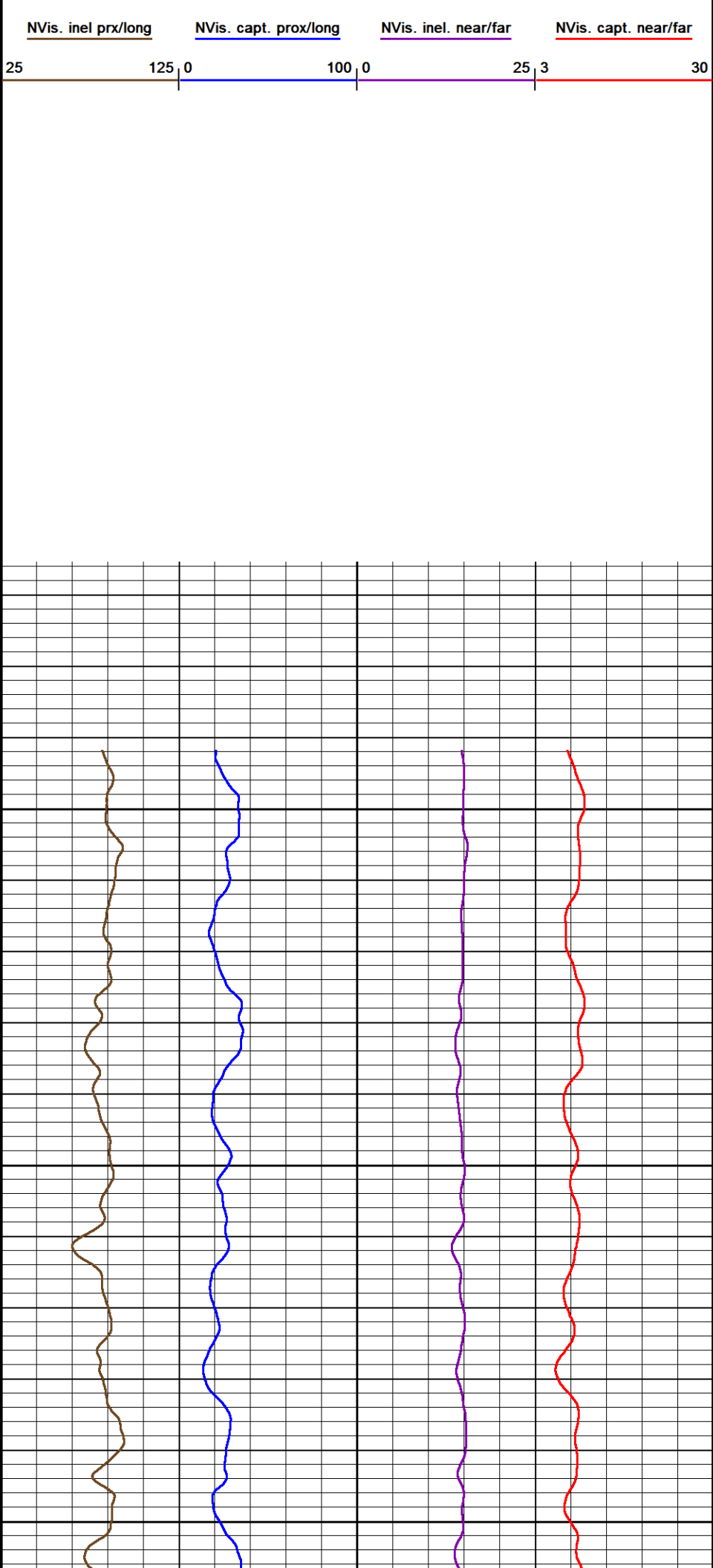
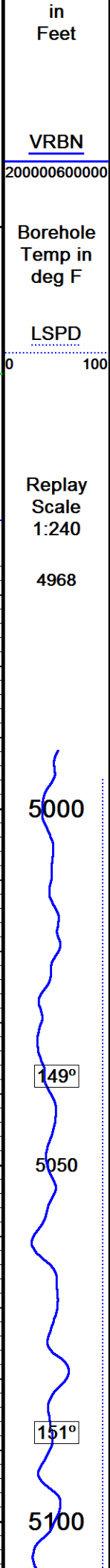
Depth Based Data - Maximum Sampling Increment 12.5cm
Filename: F:\PUCKETT_34D_23_CRE\PUCKETT_34D_23_CREB_NVISION_MAIN.dta
Filename: F:\PUCKETT_34D_23_CRE\PUCKETT_34D_23_CREB_NVISION_REPEAT.dta
System Versions: Logged with 17.01.6744 Plotted with 17.01.6744

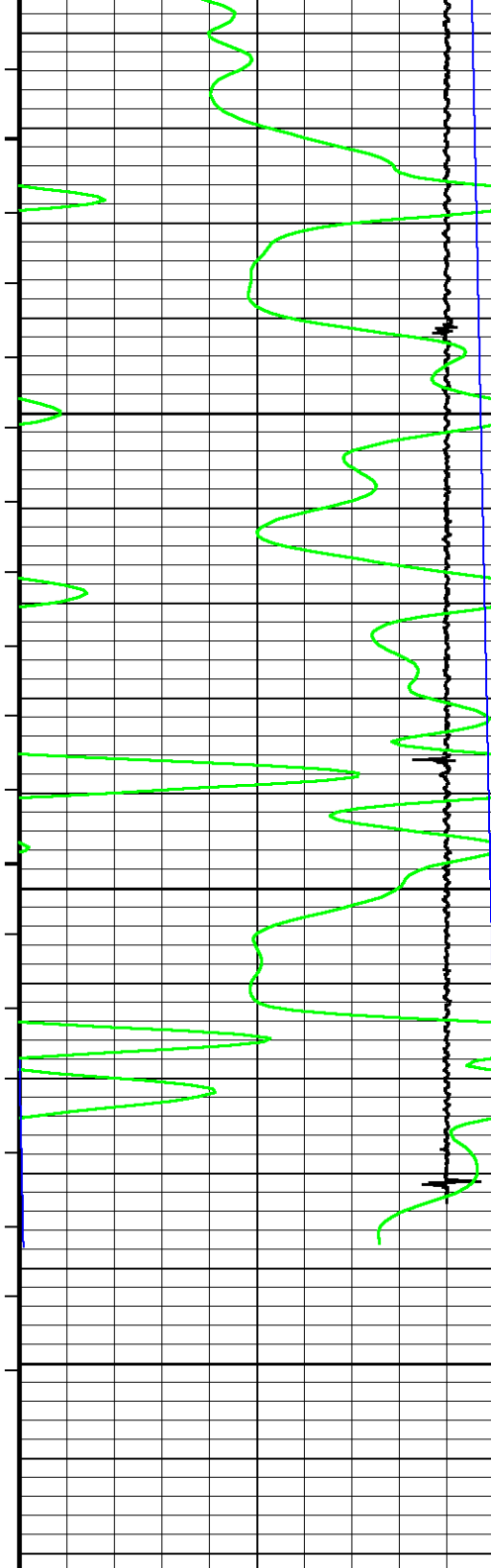
↑ MAIN PASS REPEAT PASS ↑

↓ REPEAT PASS ↓

Depth Based Data - Maximum Sampling Increment 12.5cm
Filename: F:\PUCKETT_34D_23_CRE\PUCKETT_34D_23_CREB_NVISION_REPEAT.dta
System Versions: Logged with 17.01.6744 Plotted with 17.01.6744

Depth





154°

5150

156°

5200

157°

5250

5270

Depth
in
Feet

VRBN

200000600000

Borehole
Temp in
deg F

LSPD

Timing Marks
every 60.0 sec

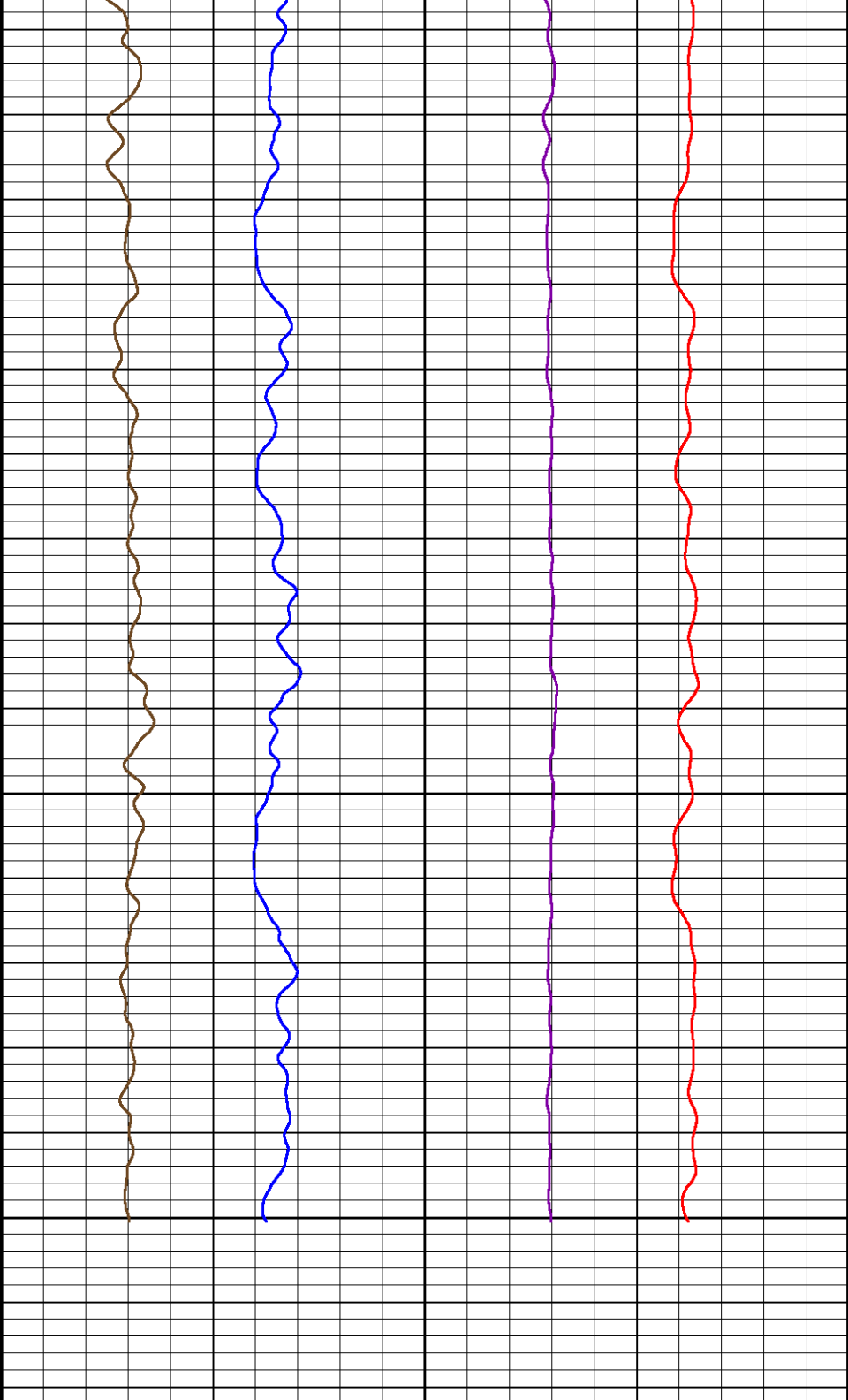
Collar Locator
millivolts

-2000 -890 220

Gamma Ray

API

0 75 150



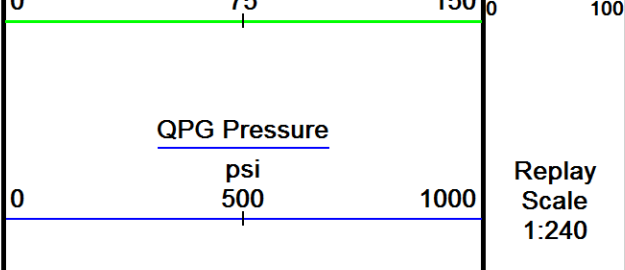
NVis. inel prx/long

NVis. capt. prox/long

NVis. inel. near/far

NVis. capt. near/far

25 125 0 100 0 25 3 30



Depth Based Data - Maximum Sampling Increment 12.5cm Plotted on 19-MAY-2017 20:39
 Filename: F:\PUCKETT_34D_23_CRE\PUCKETT_34D_23_CREB_NVISION_REPEAT.dta Recorded on 19-MAY-2017 10:07
 System Versions: Logged with 17.01.6744 Plotted with 17.01.6744

↑ REPEAT PASS ↑

DOWNHOLE EQUIPMENT

F:\PUCKETT_34D_23_CRE\PUCKETT_34D_23_CREB_NVISION_MAIN.dta

Mono-Cablehead
MCH-AA 0 LG: 1.03 ft WT: 2.2 lb OD: 1.457 in

Comm Sub
WCC-CB 130 LG: 5.97 ft WT: 24.3 lb OD: 1.693 in

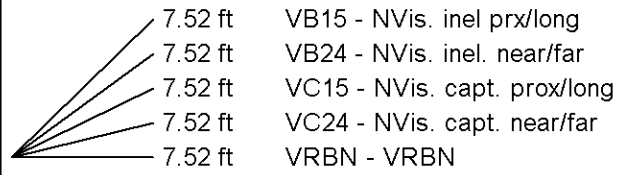
———— 22.43 ft CCL - Collar Locator

Technical drawing of a vertical section of a wall or partition. The drawing shows a cross-section with various components labeled with letters and numbers. At the top, there is a small rectangular opening labeled 'H1'. Below it, a section labeled 'H2' contains a door or window frame. Further down, a section labeled 'H3' shows a door or window frame. Below 'H3', there is a section labeled 'H4' with a door or window frame. At the bottom, there is a section labeled 'H5' with a door or window frame. The drawing also shows internal insulation and structural elements.

611

[illegible]

Casing Reservoir Evaluation Tool Sonde
CRM-BA 129 LG: 9.19 ft WT: 46.3 lb OD: 1.693 in



Gamma Ray K
 UGR-KA 131 LG: 2.34 ft WT: 17.6 lb OD: 1.693 in

Terminator sub
 TSH-C 0 LG: 0.27 ft WT: 2.2 lb OD: 1.654 in

Total Length: 28.60 ft Weight: 143.3 lb



Tool Zero (0.00ft from bottom)

All measurements relative to tool zero.

SHOP AND FIELD CALIBRATIONS

F:\PUCKETT_34D_23_CRE\PUCKETT_34D_23_CREB_NVISION_MAIN.dta

UGK Before Survey Cal UGR-KA 108

Field calibration on 26-APR-2017 13:22

Gamma Ray Before Survey calibration

Tool Type: UGR-KA
 Calibrator No: MCGGRCC144

Serial No: 108

Background	Calibrator	Standard	Units
39.7	852.4	486.5	API

Delta Counts Per Sec: 812.7 CPS/API = 1.671

QPG Master Calibration QPG-EA 141

Gauge

Serial Number	224867	Calibration Date	03 Apr 2013
Gauge Type	QHB108-16-177	Base Check Date	
Max Pressure	16000 PSI	Max Temperature	177 Deg C
Min Pressure	13 PST	Min Temperature	25 Deg C

Pressure

Pressure polynomial order 3

Temperature polynomial order 3

	T0	T1	T2	T3	T4
P0	12.1908	0.549635	-0.0194284	1.05432e-005	
P1	1.05432e-005	41.812	-0.0210446	2.67737e-005	
P2	2.67737e-005	-5.40686e-008	-0.00200716	8.54172e-006	
P3	8.54172e-006	-4.39823e-008	2.01386e-011	6.62637e-007	
P4					

Temperature

Temperature polynomial order 3

	T0	T1	T2	T3	T4
	24.9381	-0.729899	-0.00085548	-6.84964e-007	

Temperature Tool Shop Survey Calibration TMP-NA 137

Temperature Tool Shop Survey Calibration

Tool Type: TMP-NA

Serial No: 137

calibration

Standard		Measured
32	DEGF	36714 Hz
212	DEGF	50849 Hz

UGK Before Survey Cal UGR-KA 131

Field Calibration on 26-APR-2017 13:52

Gamma Ray Before Survey Calibration

Tool Type: UGR-KA
Calibrator No: MCGGRCC144

Serial No: 131

Background	Calibrator	Standard	Units
27.9	848.9	486.5	API

Delta Counts Per Sec: 821.0

CPS/API = 1.688

COMPANY

CAERUS OIL & GAS

WELL	PUCKETT 34D-23
FIELD	GRAND VALLEY
PROVINCE/COUNTY	GARFIELD
COUNTRY/STATE	USA / COLORADO

Elevation Kelly Bushing	8426	feet	Bottom Log Interval	9088.00	feet
Elevation Drill Floor	8426	feet	Depth Driller	9197.00	feet
Elevation Ground Level	8396	feet	Depth Logger	9088.00	feet



Weatherford®

RAPTOR NVISION LOG