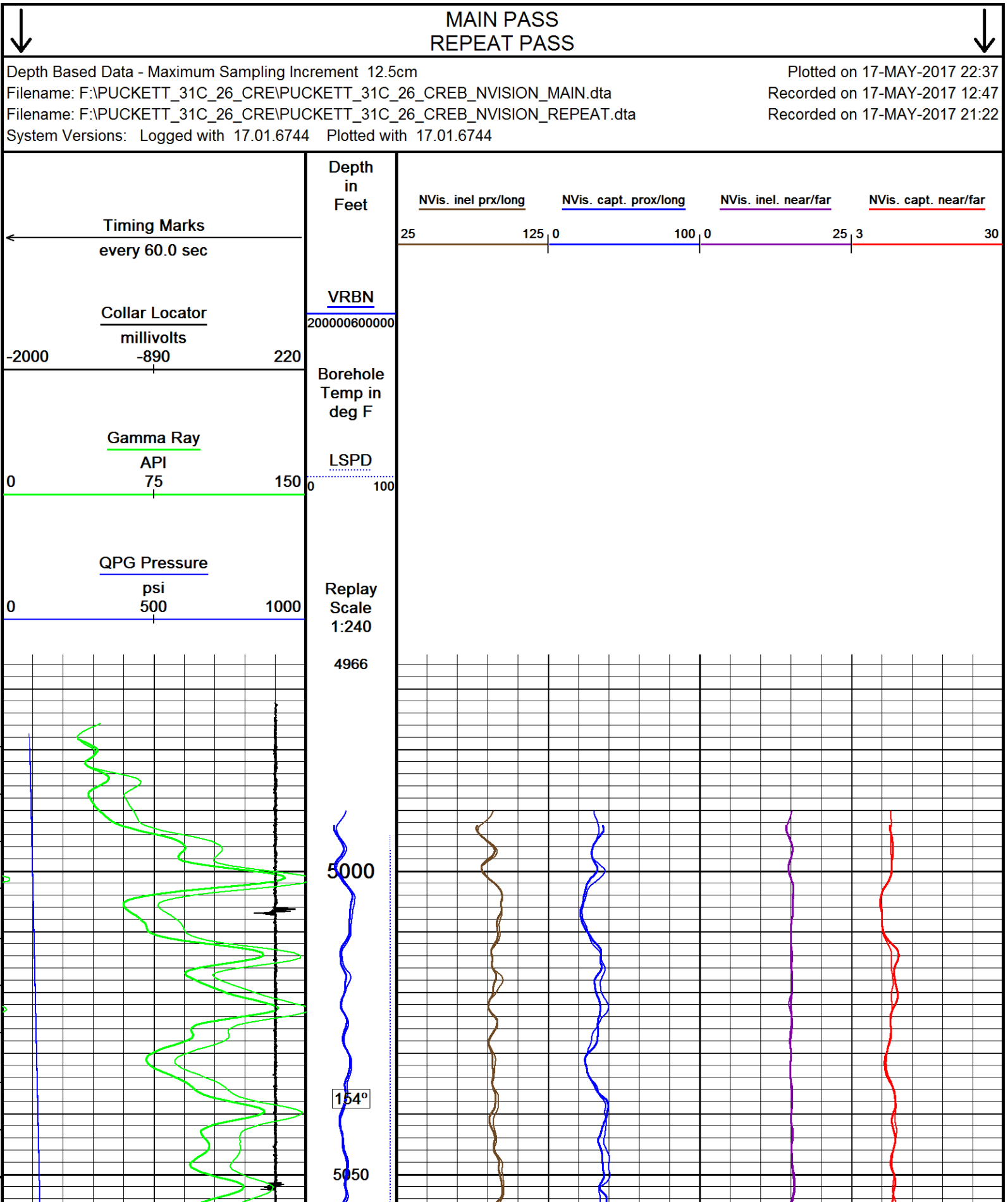
				RAPTOR NVISION LOG			
COMPANY WELL FIELD PROVINCE/COUNTY COUNTRY/STATE LOCATION				CAERUS OIL & GAS PUCKETT 31C-26 GRAND VALLEY GARFIELD USA / COLORADO			
SEC 26		TWP 06S	RGE 97W	Other Services SBT			
Latitude		Longitude		API Number			
Permanent Datum GROUND LEVEL, Elevation 8396 feet				Elevations: KB 8426.00 DF 8426.00 GL 8396.00			
Log Measured From KB, 30.00 feet above Permanent Datum							
Drilling Measured From KB							
Date		17-MAY-2017		PERFORATION RECORD			
Run Number		ONE		Shot	Number	Depth From	Depth To
Service Order		18227/1483		Density	of Shots	feet	feet
Type Log		CREB					
Depth Driller		9019.00					
Depth Logger		8953.00					
Top Log Interval		5000.00					
Bottom Log Interval		8953.00					
Hole Fluid Type		WATER					
Hole Fluid Level		0.00					
Restriction ID		3.875		Gun Type			
Max Recorded Temp		237.00		Gun Size			
Well Head Pressure		0.00		CASING / TUBING RECORD			
Well Head Equipment		N/A		Size	Weight	Depth From	Depth To
Time Well Ready		ROA		inches	pounds/ft	feet	feet
Time Logger Bottom		1230		4.500	11.60	0.00	8976.00
Unit		14333					
Equipment Name		WSS-E					
Base		CASPER					
Recorded By		P. MAZUR					
Witnessed By		NOT WITNESSED					

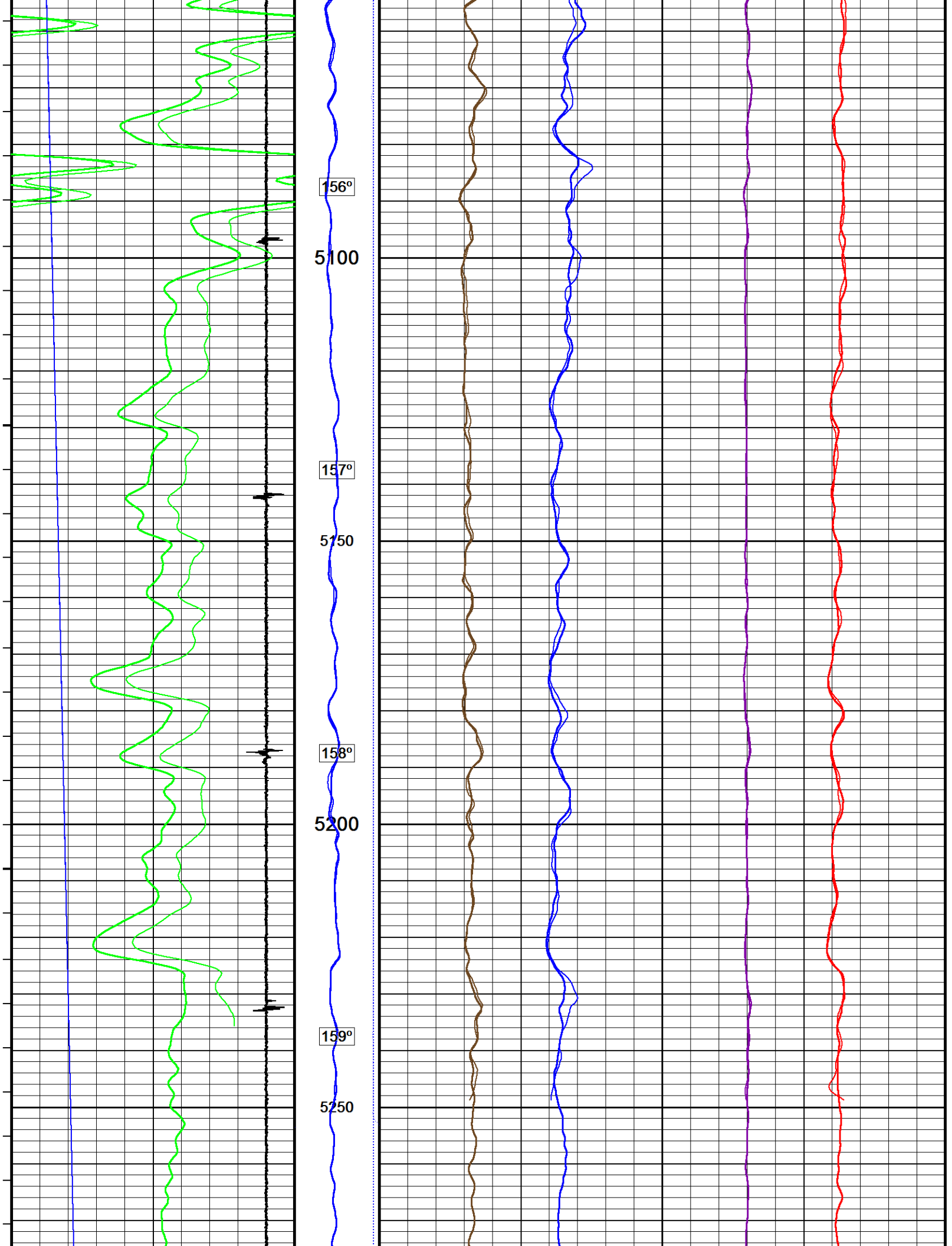
CASING / TUBING RECORD						
Type	Grade	TypeJoint	Size inches	Depth From feet	Shoe Depth feet	Weight pounds/ft
			4.500	0.00	8976.00	11.60

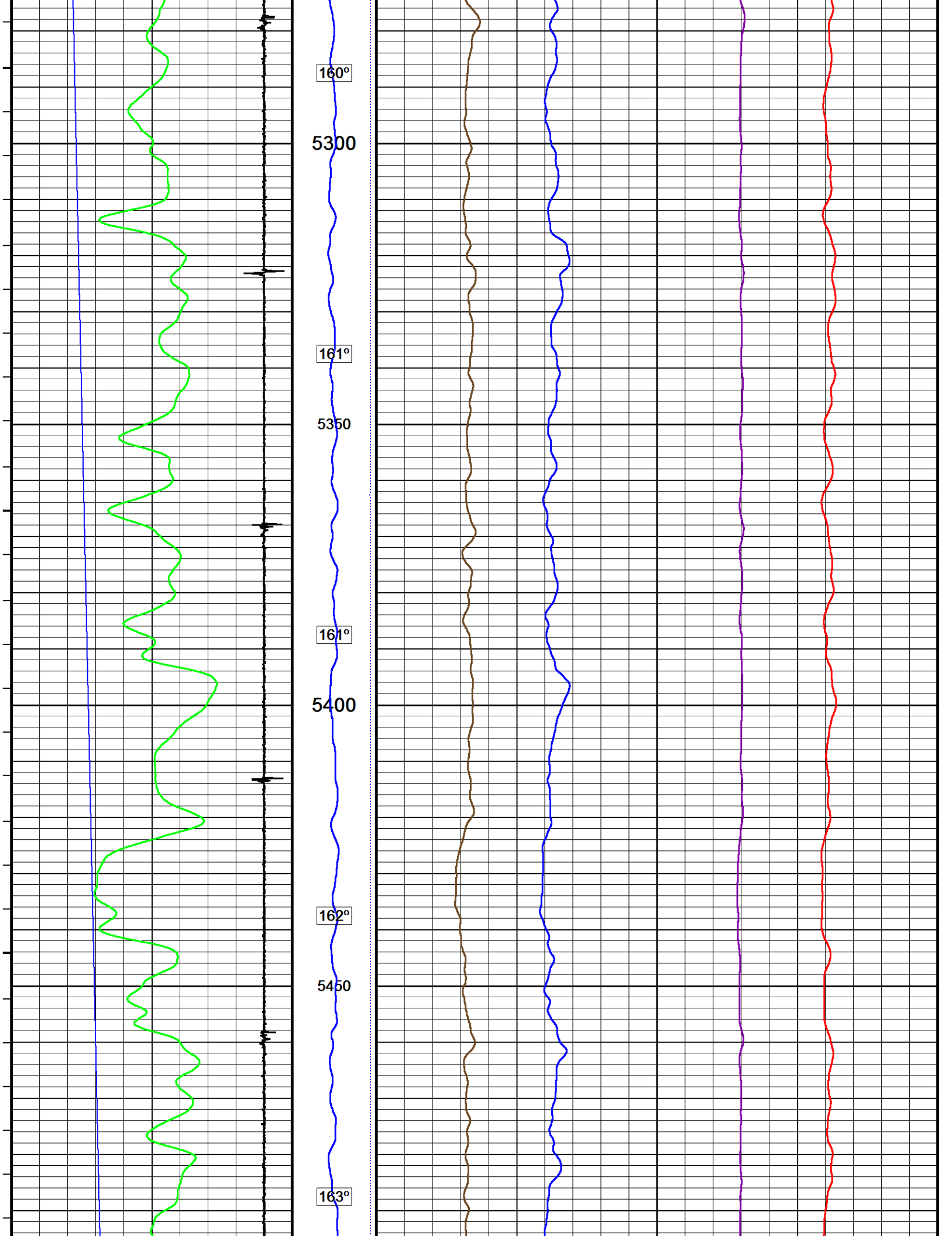
REMARKS
SOFTWARE VERSION 17.01.6744 - DEVELOPMENT BUILD VERSION
ALL DEPTH CONTROL PROCEDURES FOR SUBSEQUENT RUN IN HOLE WERE FOLLOWED. LOG RUN FROM 30' K.B.
SURFACE SYSTEM USED: WCM-D 307
TOOLS RUN: WCCC, UGRK, QPGE, TMPN, CRPB, CRMB, UGRK WERE RAN IN COMBINATION
GAMMA RAY COUNTS ON SUBSEQUENT PASSES ARE AFFECTED BY RESIDUAL NEUTRON ACTIVATION CAUSED BY THE PREVIOUS PASS
BOTTOM HOLE TEMPERATURE WAS DEG. 237F

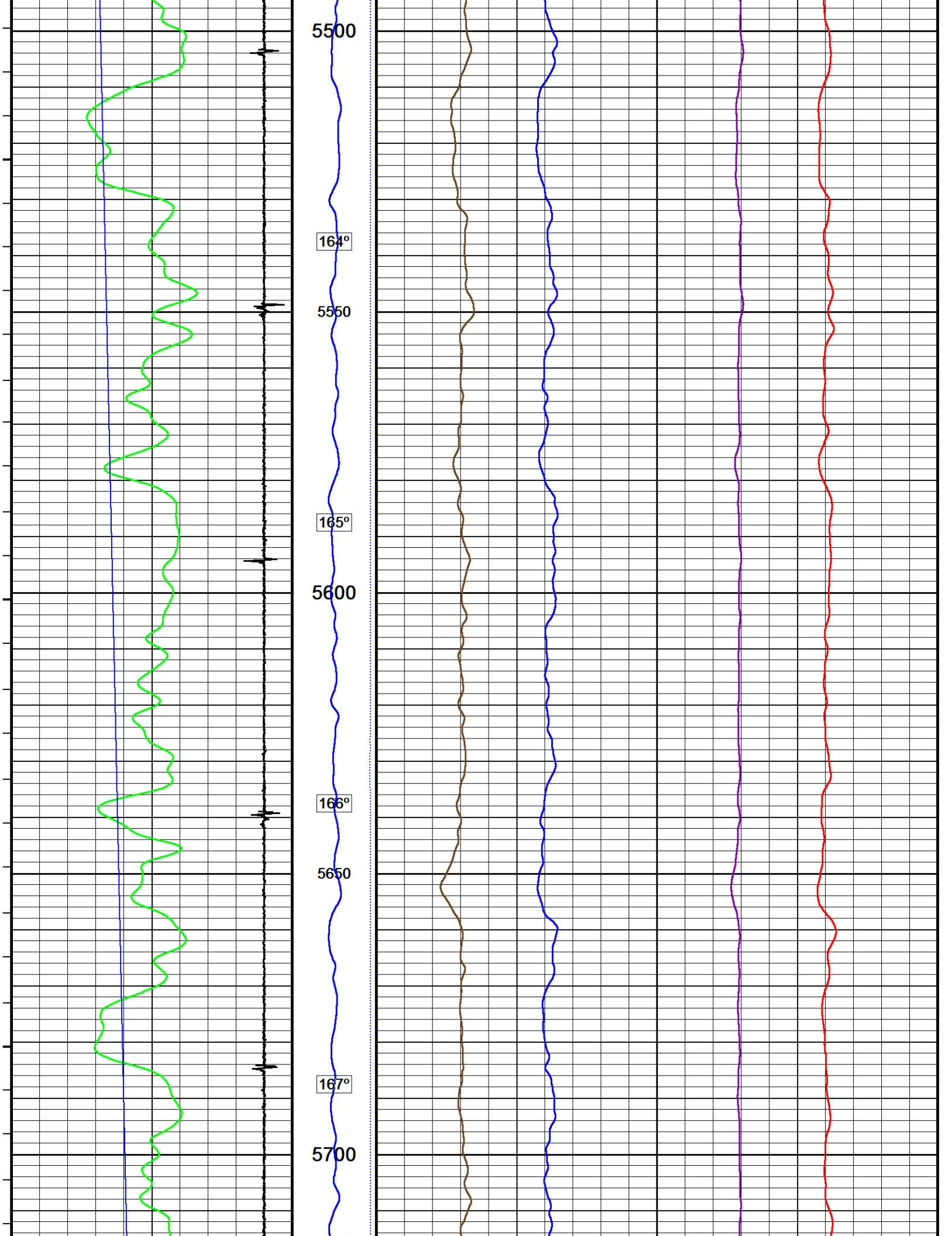
In interpreting, communicating or providing information and/or making recommendations, either written or oral, as to logs or test or other data, type or amount of material, or Work or other service to be furnished, or manner of performance, or in predicting results to be obtained, the Contractor will give the Company the benefit of the Contractor's best judgment based on its experience and will perform all such Work in a good and workmanlike manner. Any interpretation of test or other data, and any recommendation or reservoir description based upon such interpretations, are opinions based upon inferences from measurements and empirical relationships and assumptions, which inferences and assumptions are not infallible, and with respect to which professional engineers and analysts may differ. ACCORDINGLY ANY INTERPRETATION OR RECOMMENDATION RESULTING FROM THE SERVICES WILL BE AT THE SOLE RISK OF THE COMPANY, AND THE CONTRACTOR CANNOT AND DOES NOT WARRANT THE ACCURACY, CORRECTNESS OR COMPLETENESS OF ANY SUCH

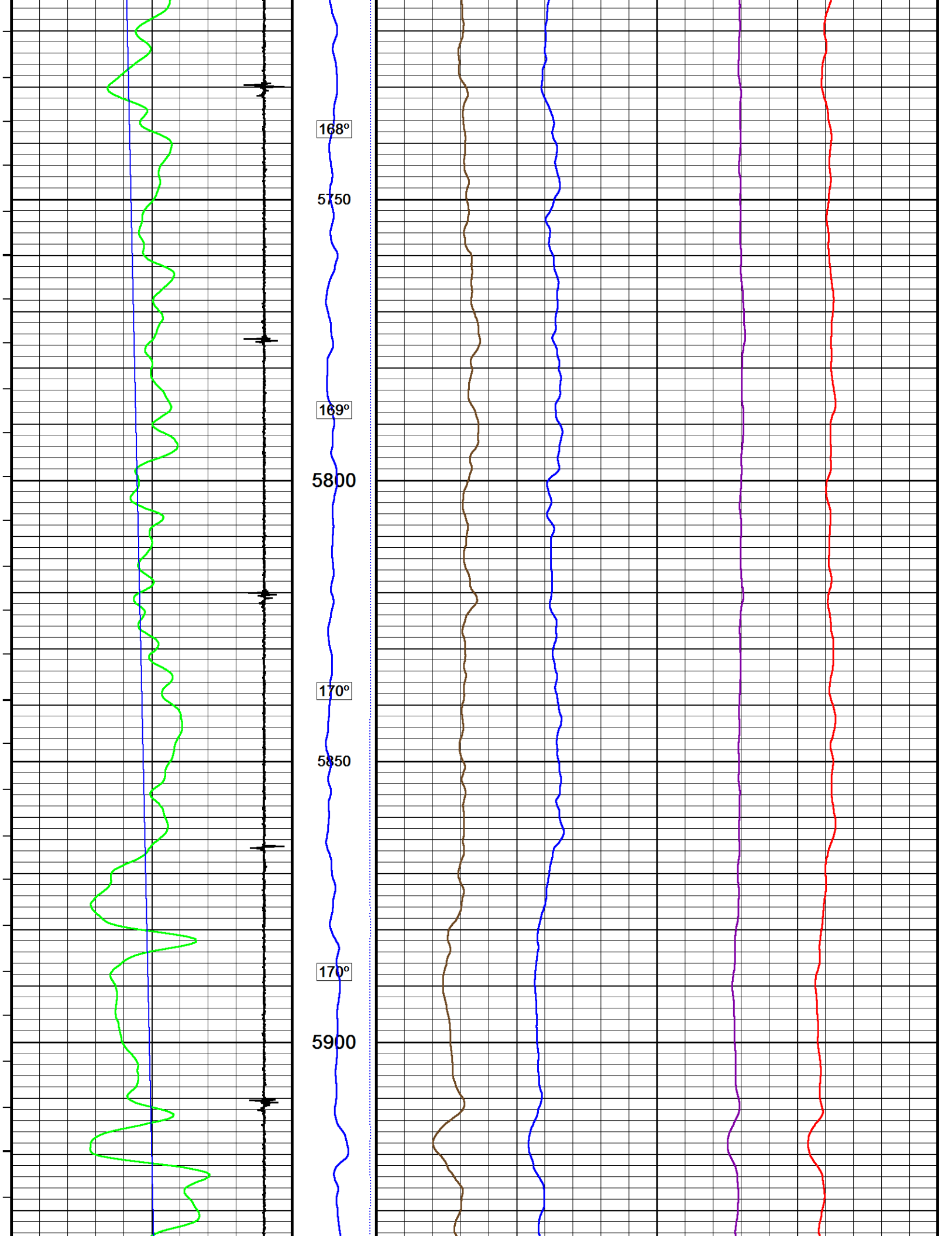
INTERPRETATION OR RECOMMENDATION, WHICH INTERPRETATIONS AND RECOMMENDATIONS SHOULD NOT, THEREFORE, UNDER ANY CIRCUMSTANCES BE RELIED UPON AS THE SOLE OR MAIN BASIS FOR ANY DRILLING, COMPLETION, WELL TREATMENT, PRODUCTION OR FINANCIAL DECISION, OR ANY PROCEDURE INVOLVING ANY RISK TO THE SAFETY OF ANY DRILLING ACTIVITY, DRILLING RIG OR ITS CREW OR ANY OTHER INDIVIDUAL. THE COMPANY HAS FULL RESPONSIBILITY FOR ALL DECISIONS CONCERNING THE SERVICES.

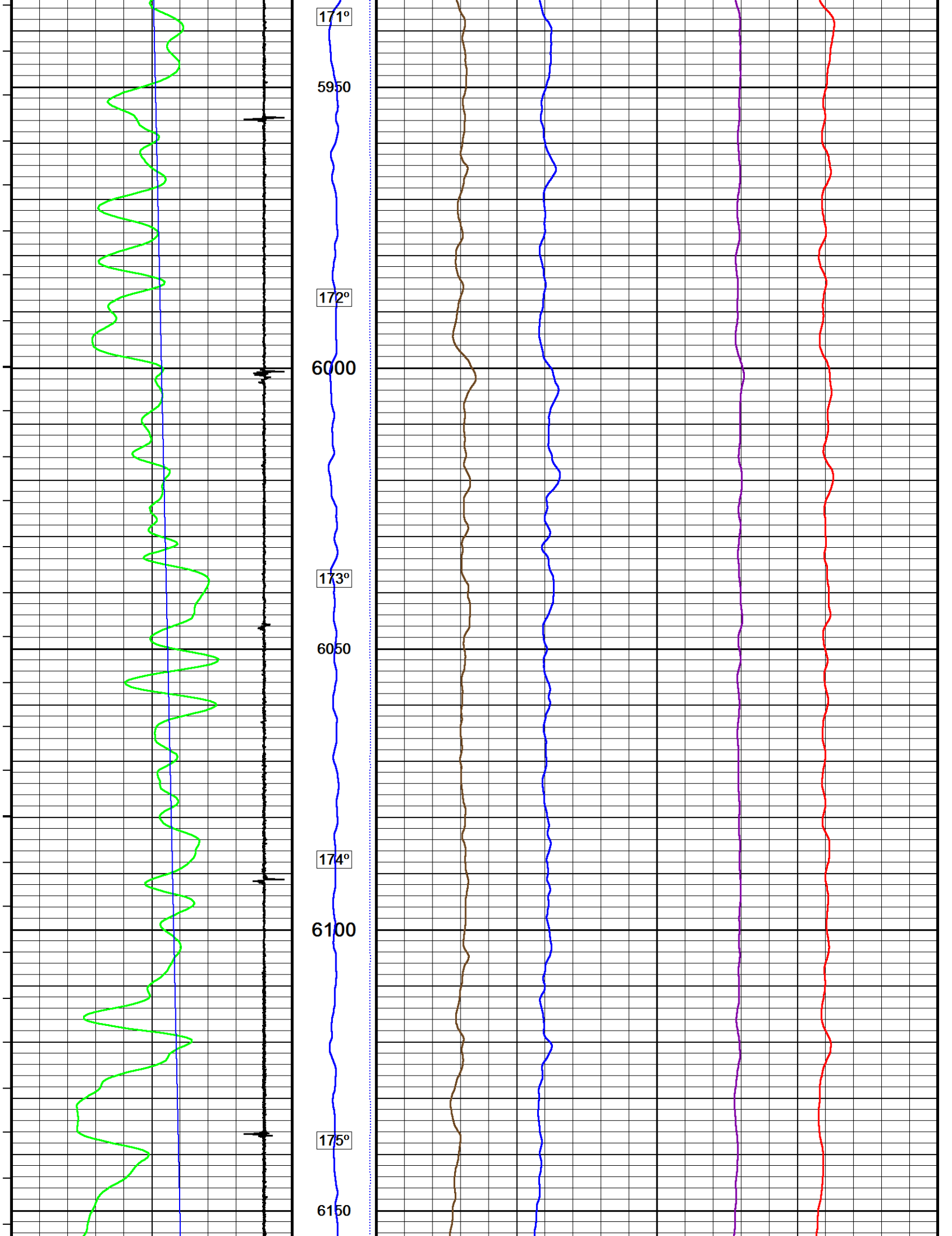


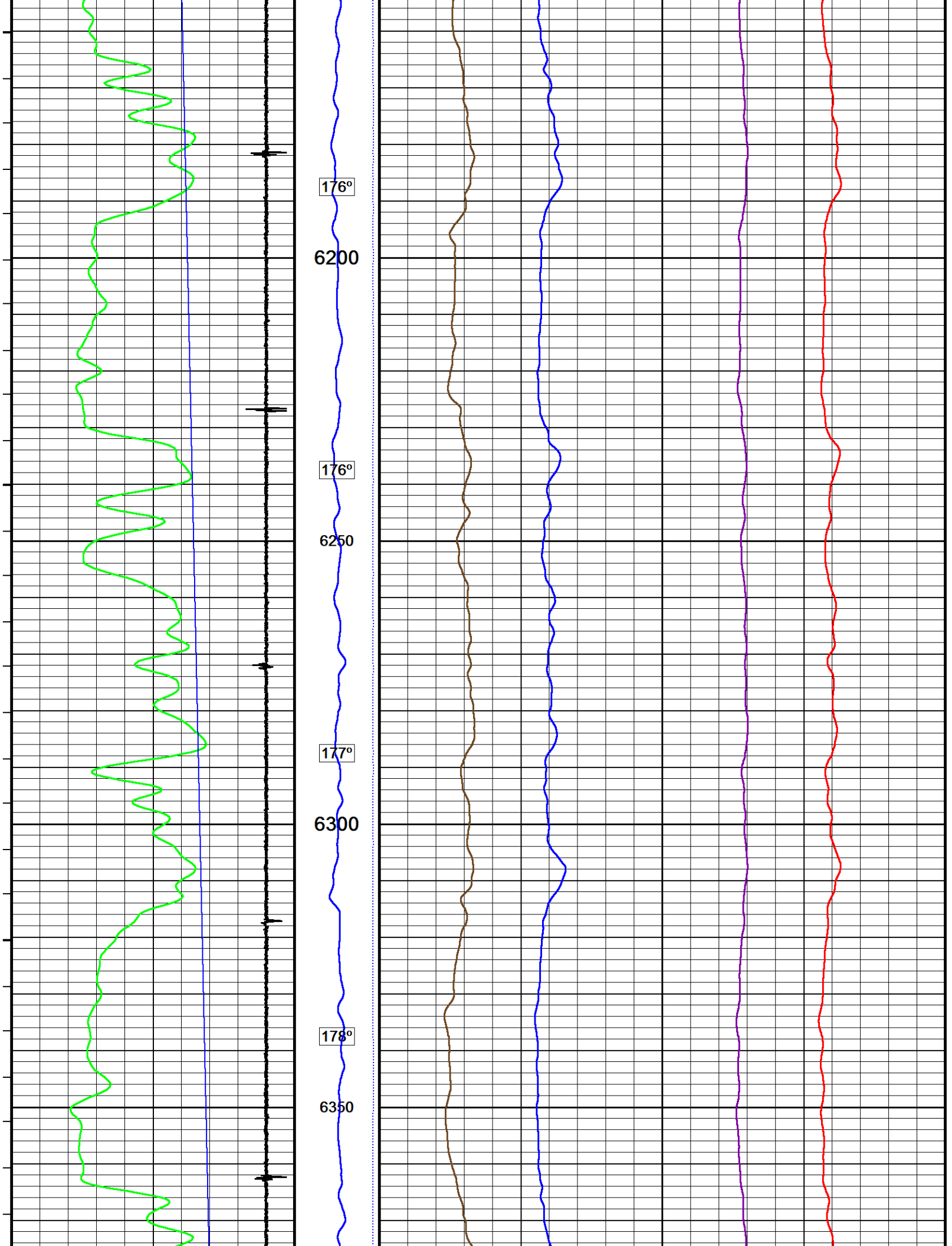


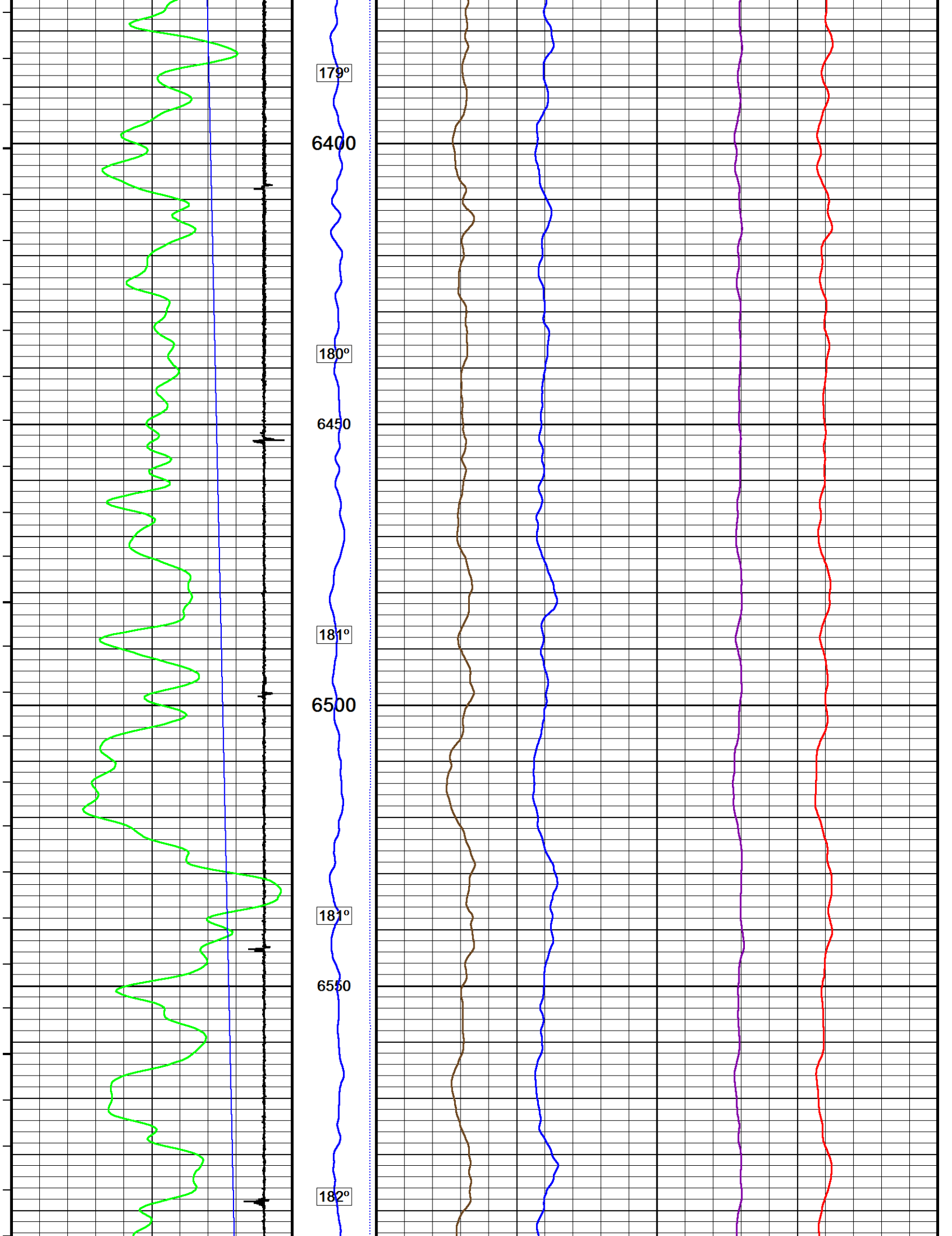


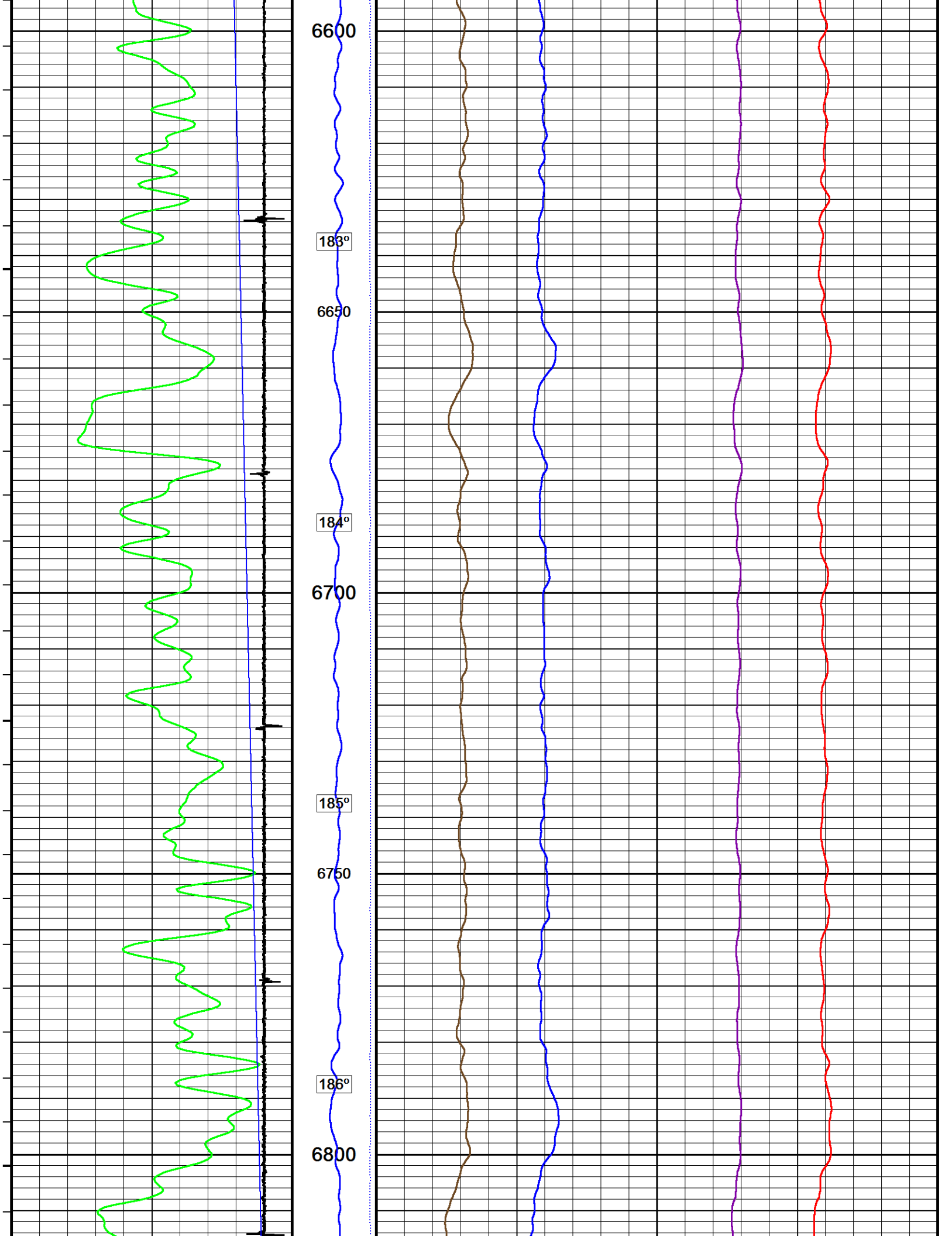


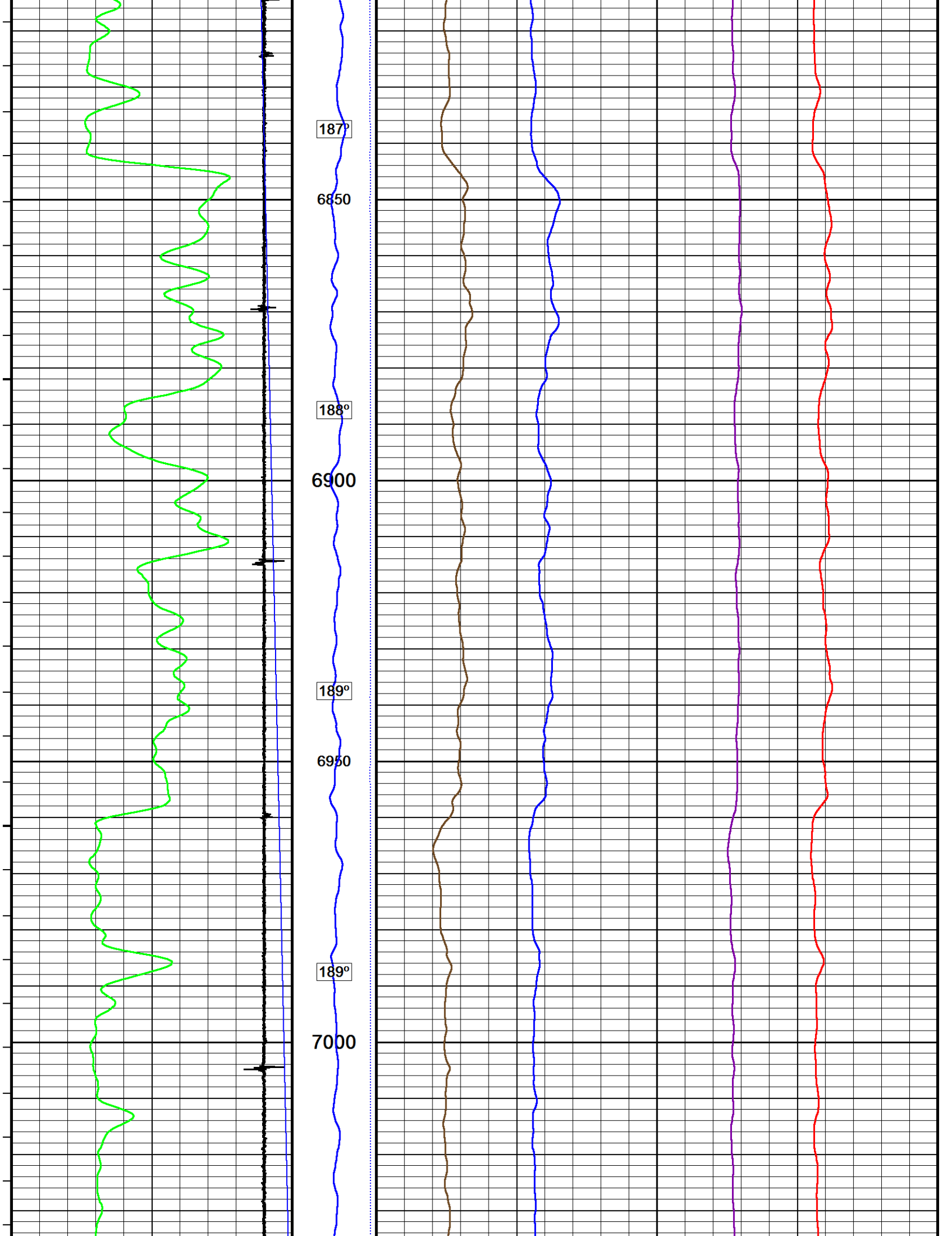


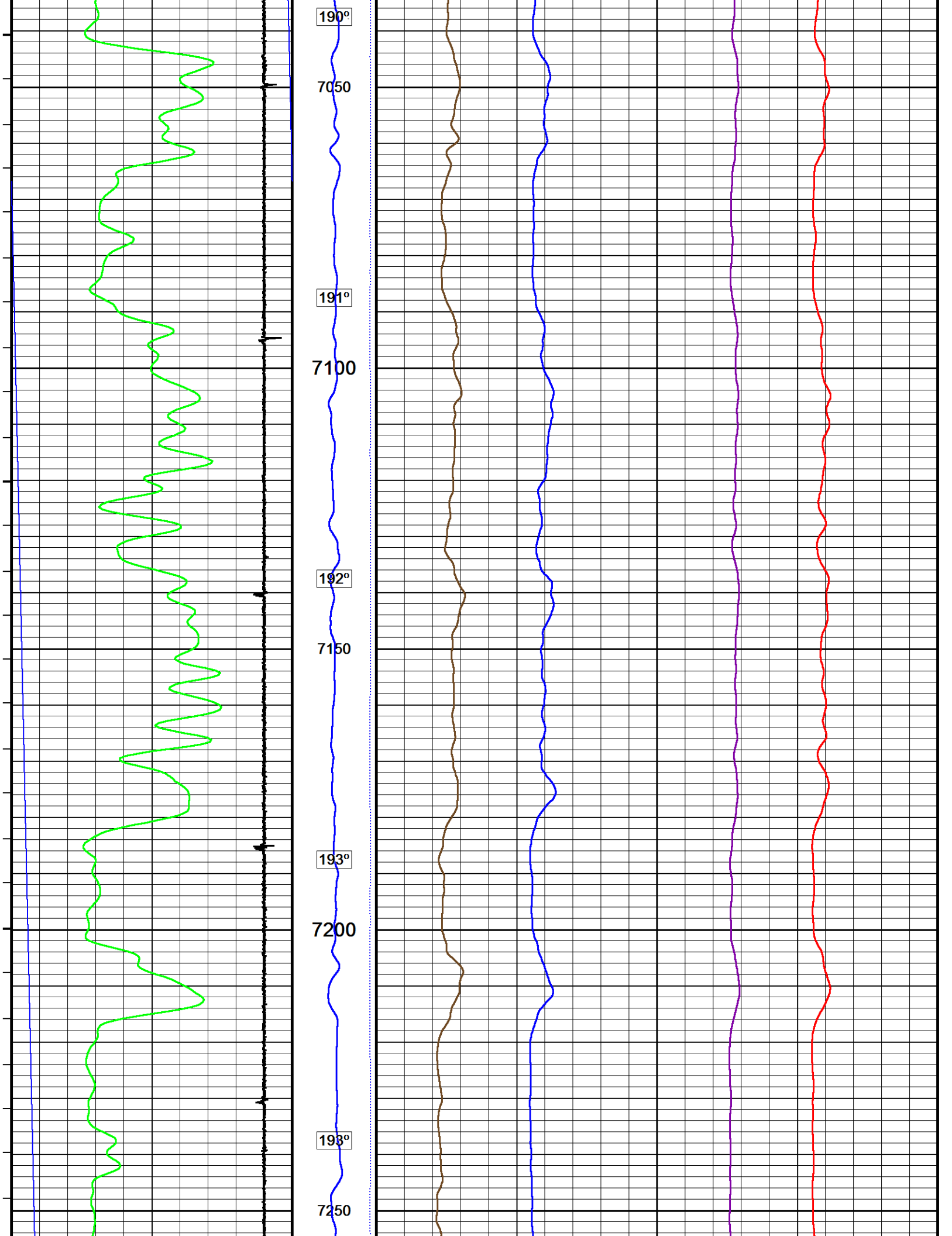


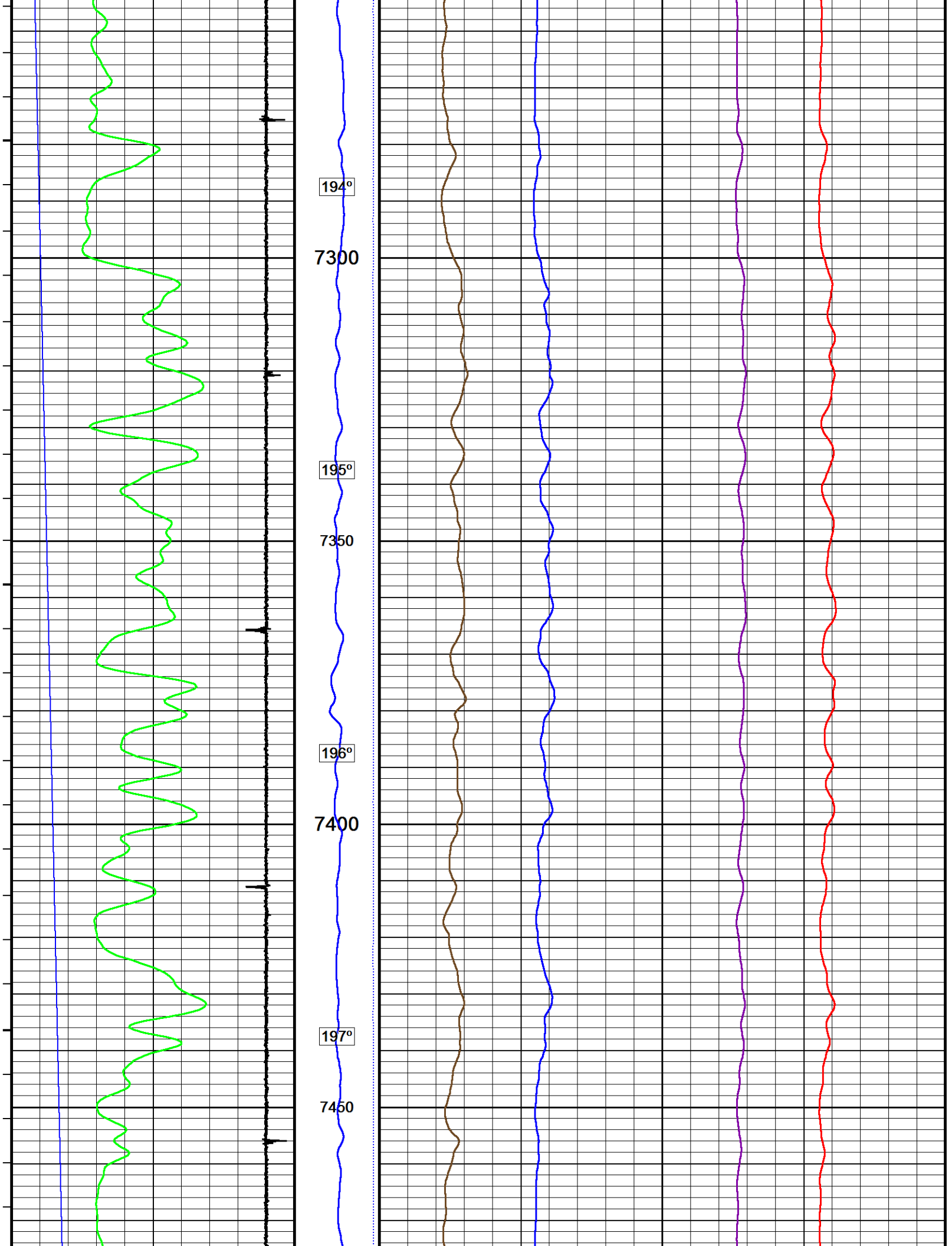


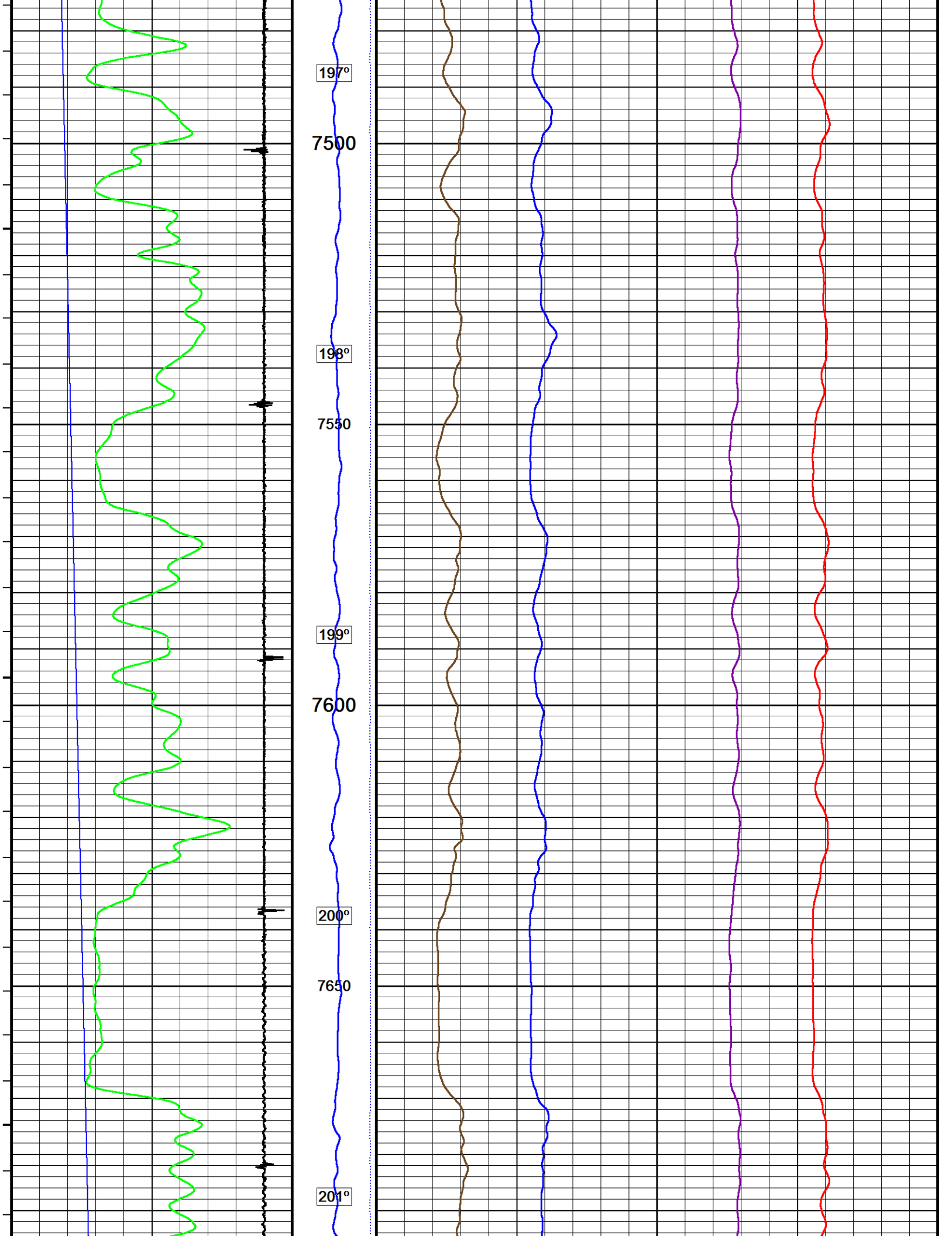


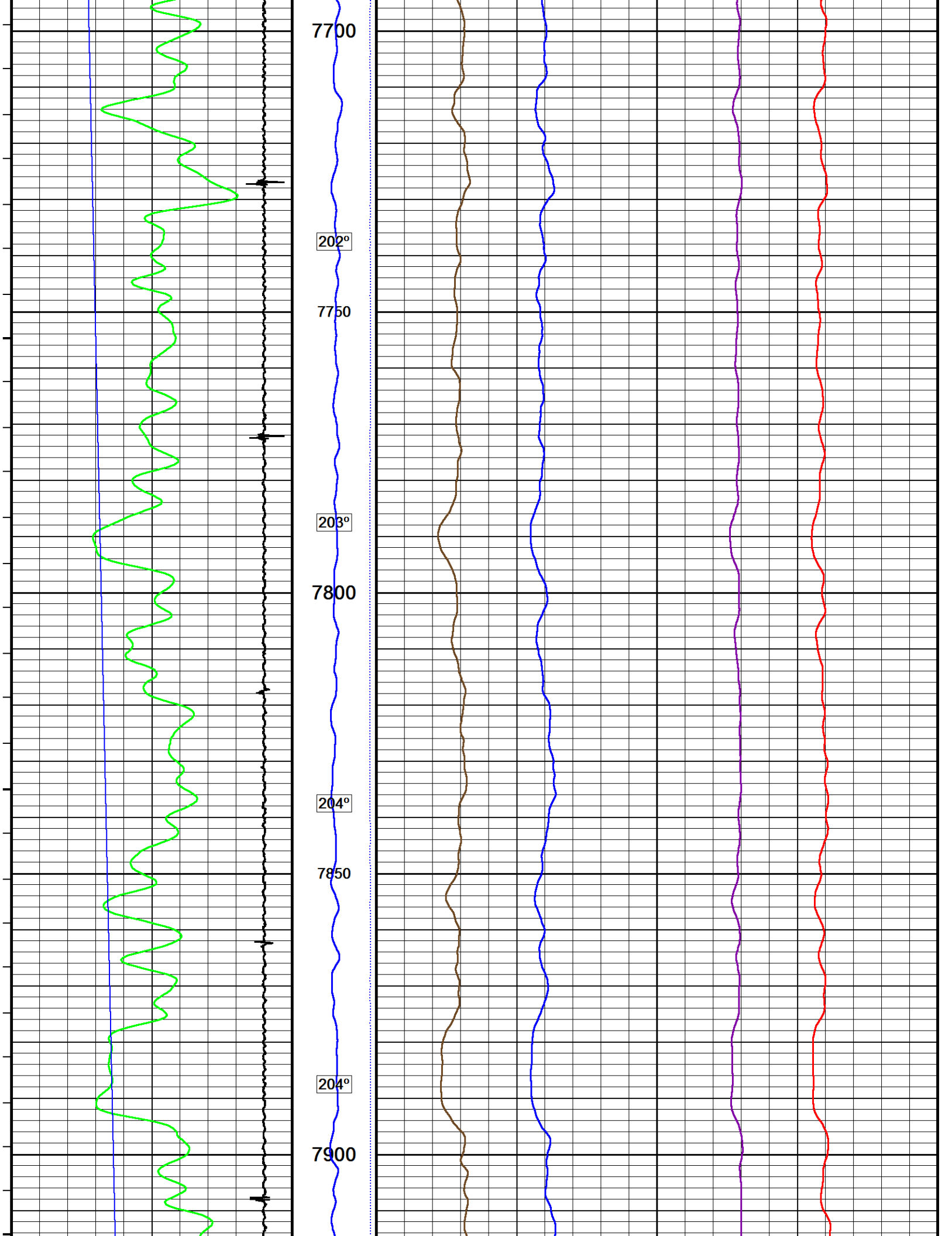


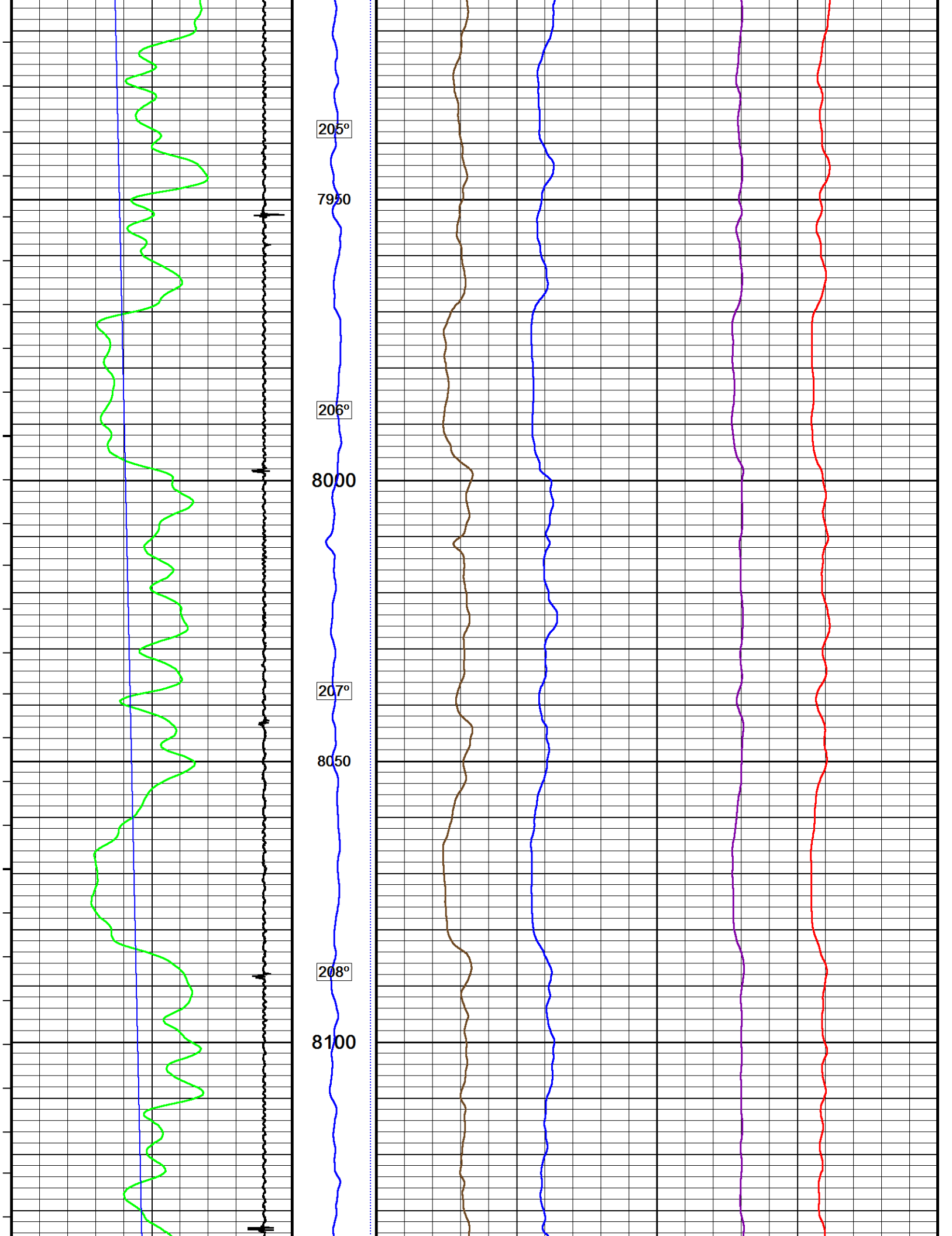


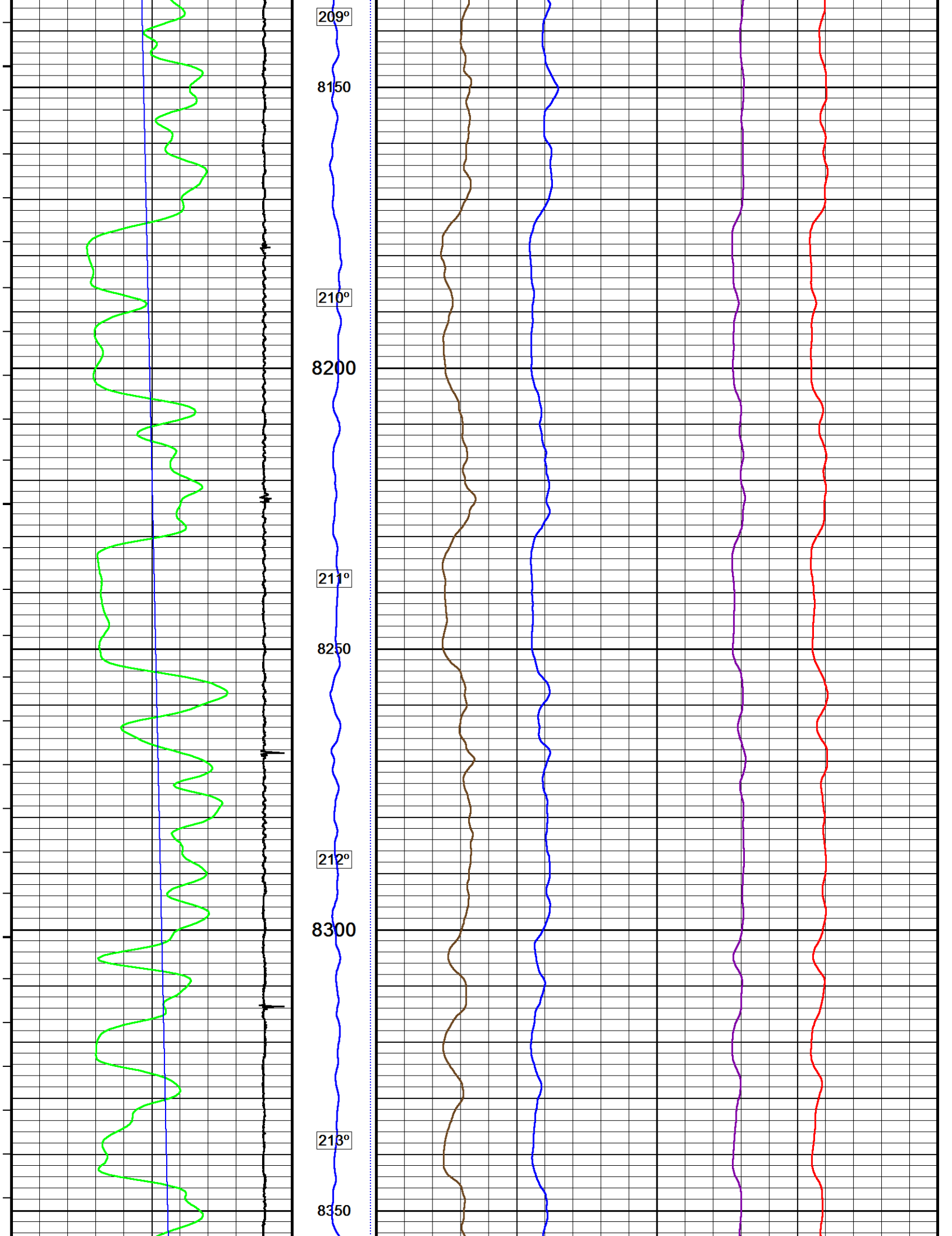


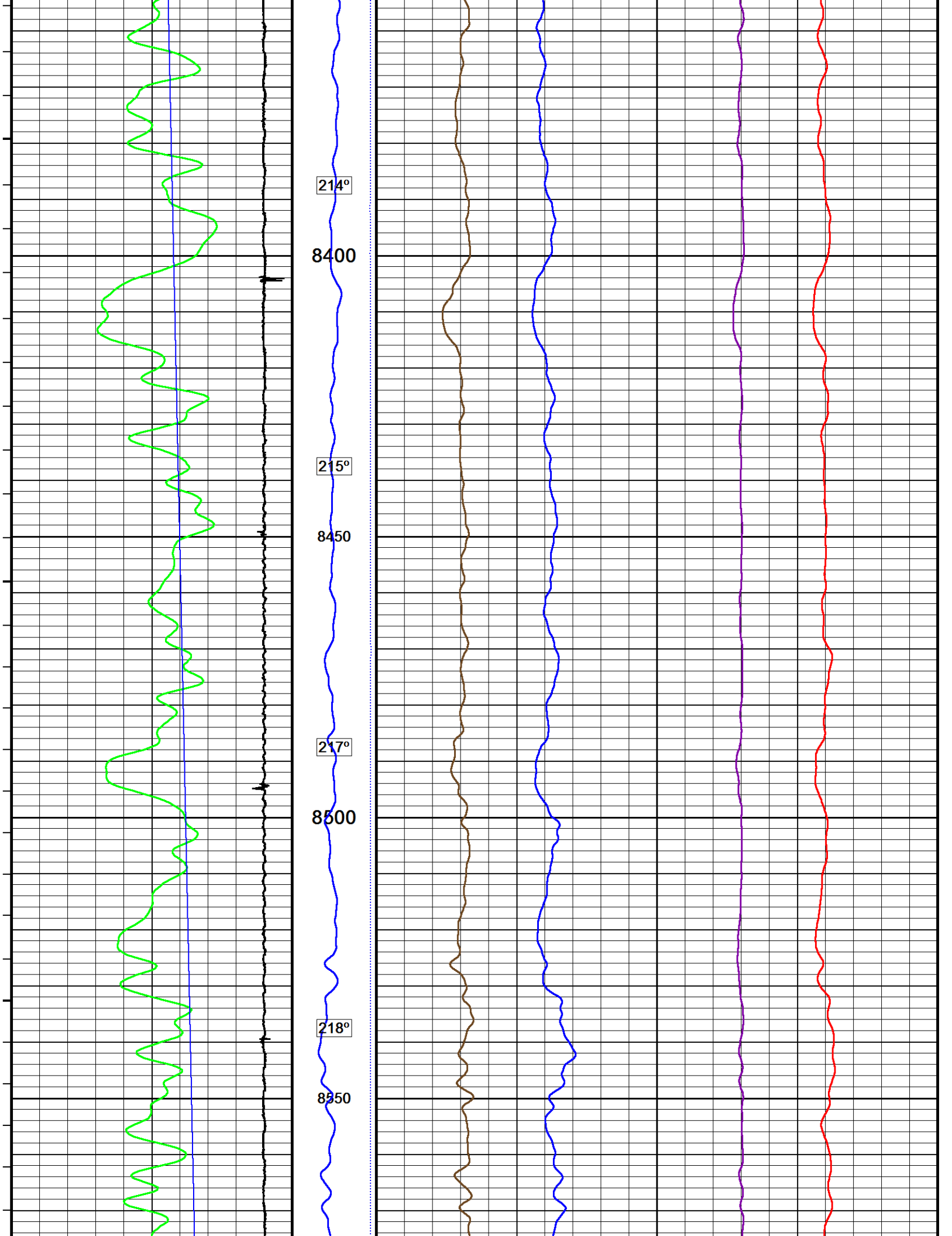


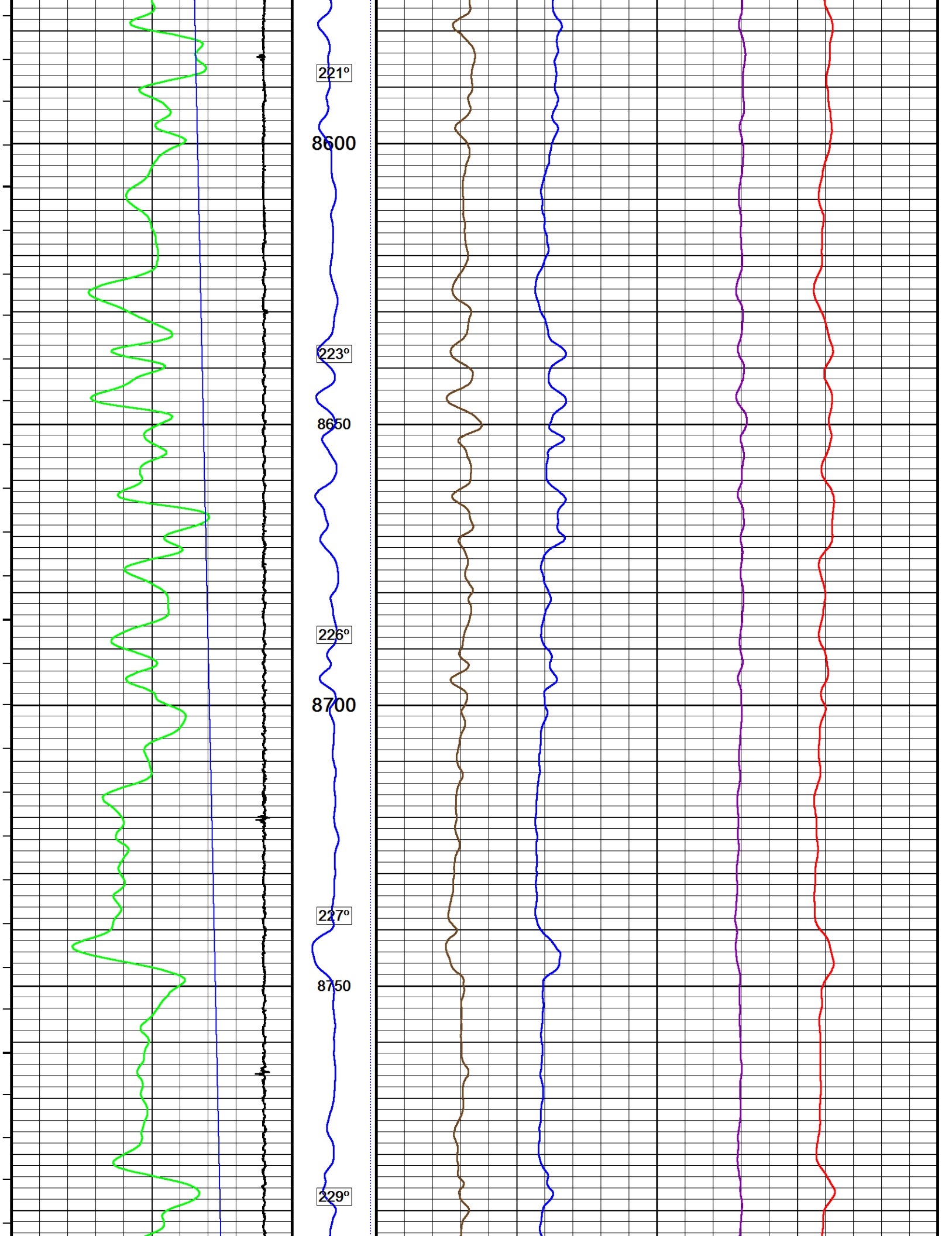


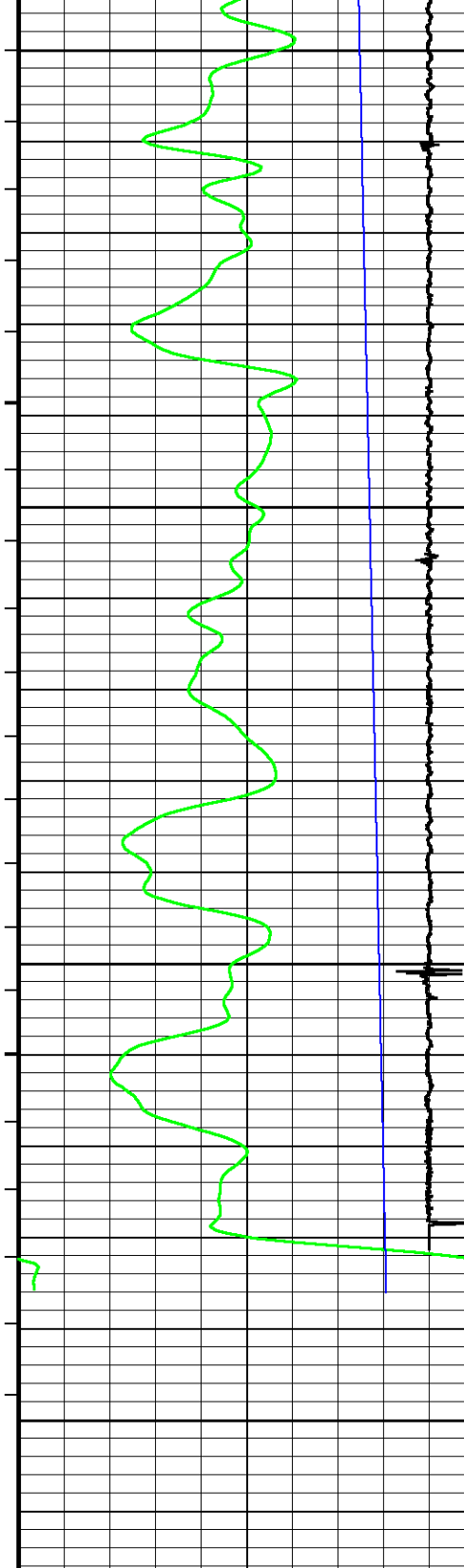












8800

231°

8850

234°

8900

237°

8950

8966  
Depth  
in  
Feet

VRBN

200000600000

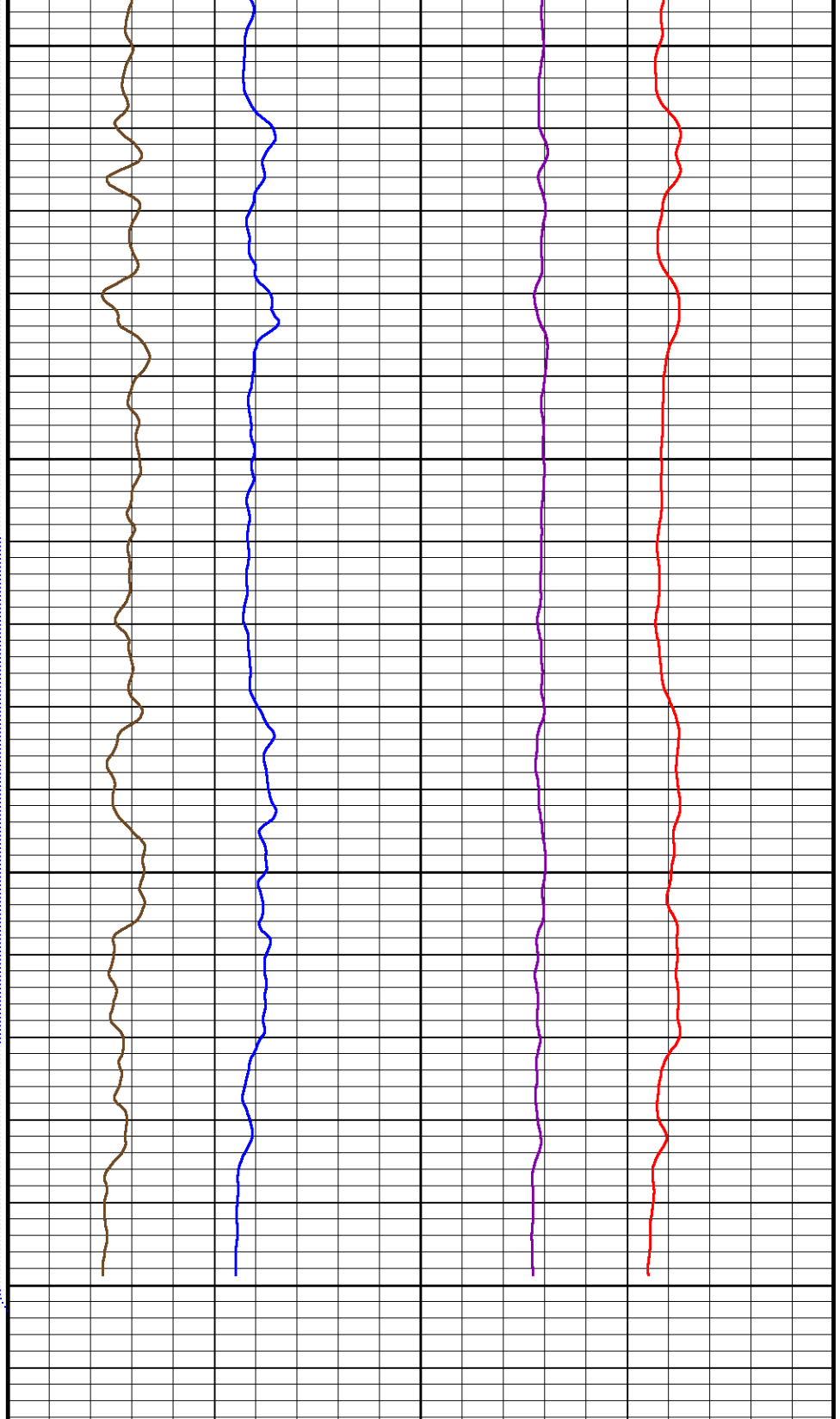
Borehole  
Temp in  
deg F

Timing Marks  
every 60.0 sec

Collar Locator  
millivolts  
-890

-2000 220

Gamma Ray



NVis. incl prx/long

NVis. capt. prox/long

NVis. incl. near/far

NVis. capt. near/far

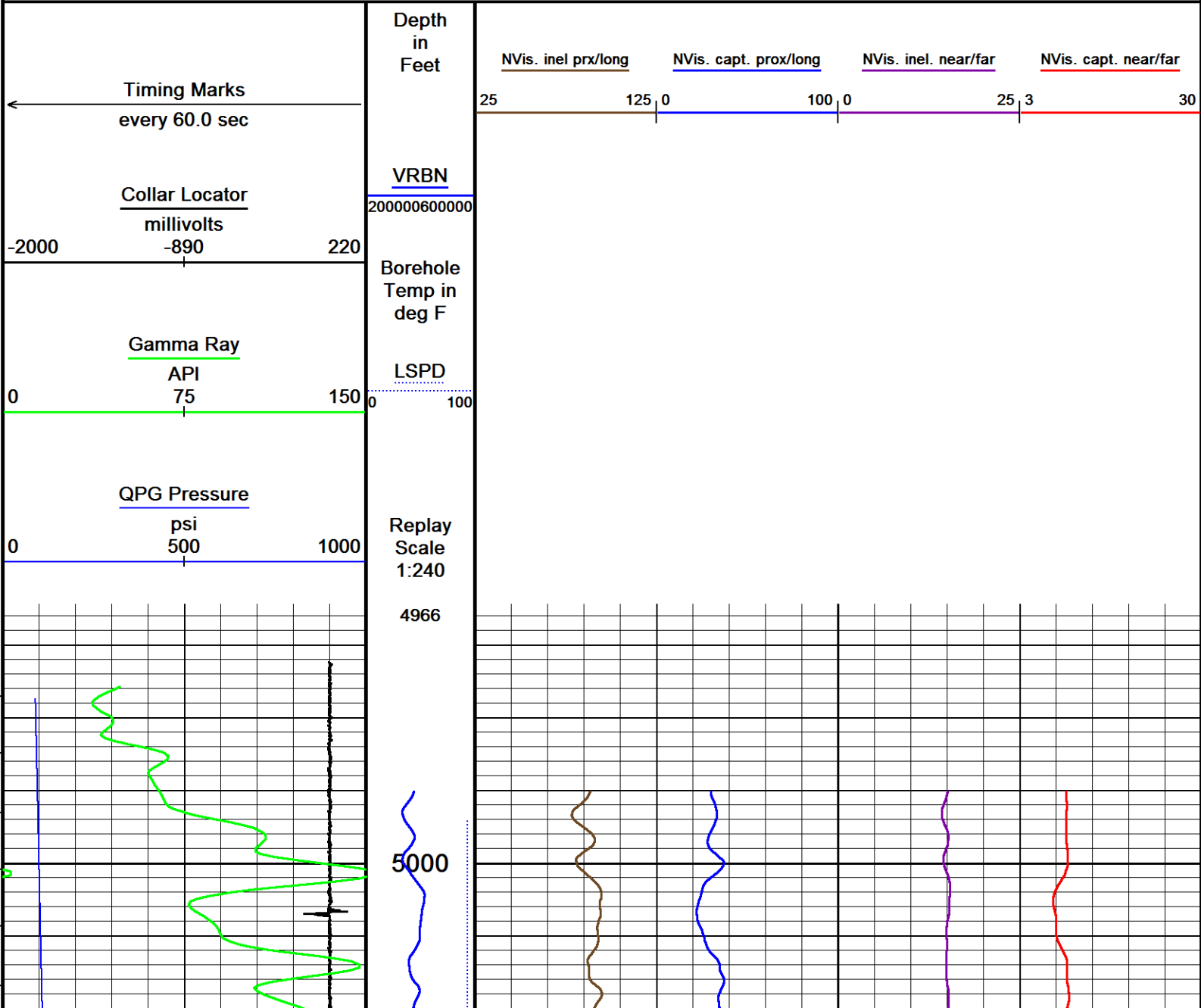
25 125 0 100 0 25 3 30

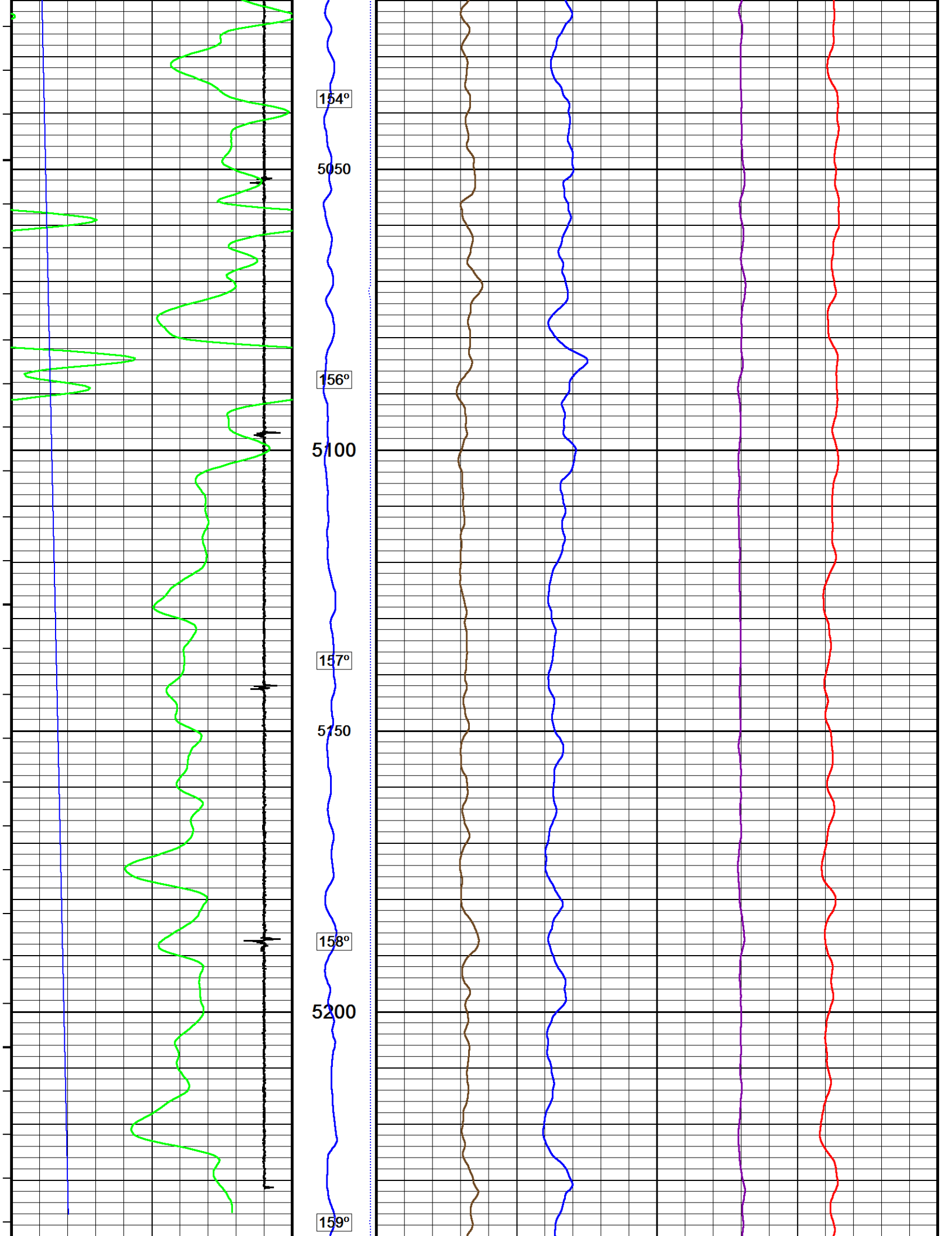


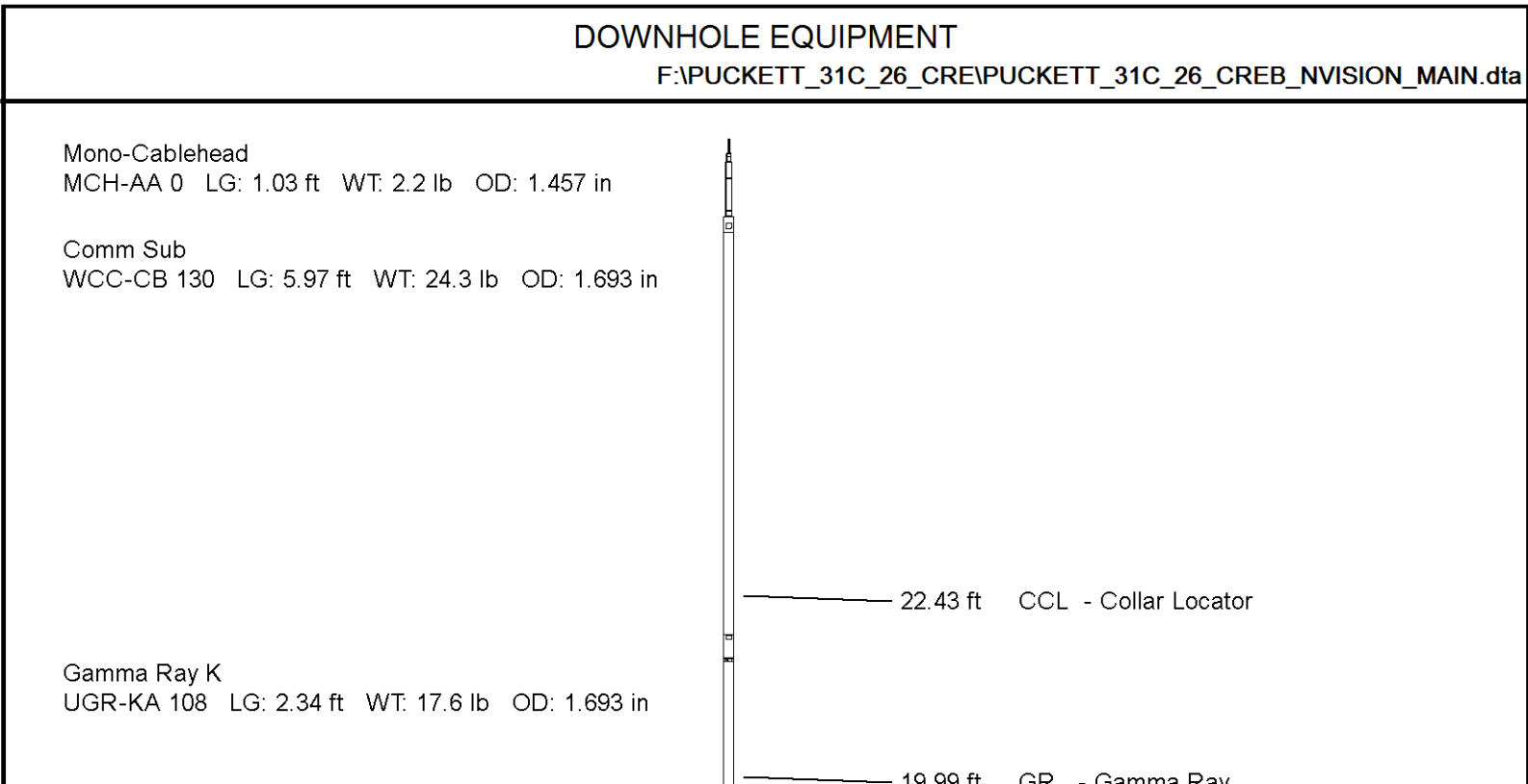
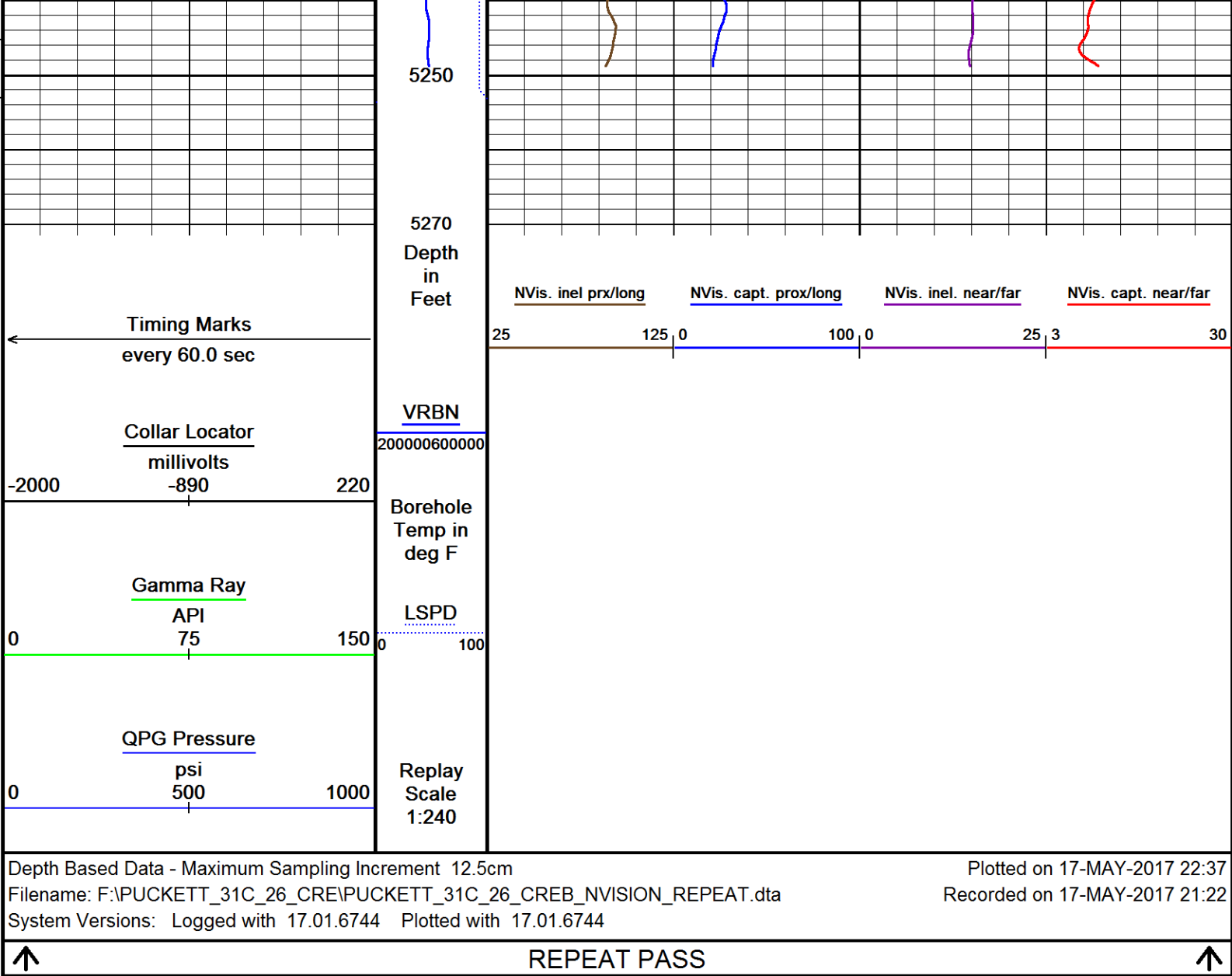
Depth Based Data - Maximum Sampling Increment 12.5cm	Plotted on 17-MAY-2017 22:37
Filename: F:\PUCKETT_31C_26_CRE\PUCKETT_31C_26_CREB_NVISION_MAIN.dta	Recorded on 17-MAY-2017 12:47
Filename: F:\PUCKETT_31C_26_CRE\PUCKETT_31C_26_CREB_NVISION_REPEAT.dta	Recorded on 17-MAY-2017 21:22
System Versions: Logged with 17.01.6744 Plotted with 17.01.6744	

↑	MAIN PASS REPEAT PASS	↑
---	--------------------------	---

↓	REPEAT PASS	↓
Depth Based Data - Maximum Sampling Increment 12.5cm		Plotted on 17-MAY-2017 22:37
Filename: F:\PUCKETT_31C_26_CRE\PUCKETT_31C_26_CREB_NVISION_REPEAT.dta		Recorded on 17-MAY-2017 21:22
System Versions: Logged with 17.01.6744 Plotted with 17.01.6744		







Quartz Press, Dual ITB, 43mm  
QPG-EA 141 LG: 2.23 ft WT: 8.8 lb OD: 1.693 in

Tool Temperature, 43mm, 177C, 10-pin ITB  
TMP-NA 137 LG: 1.93 ft WT: 8.8 lb OD: 1.693 in

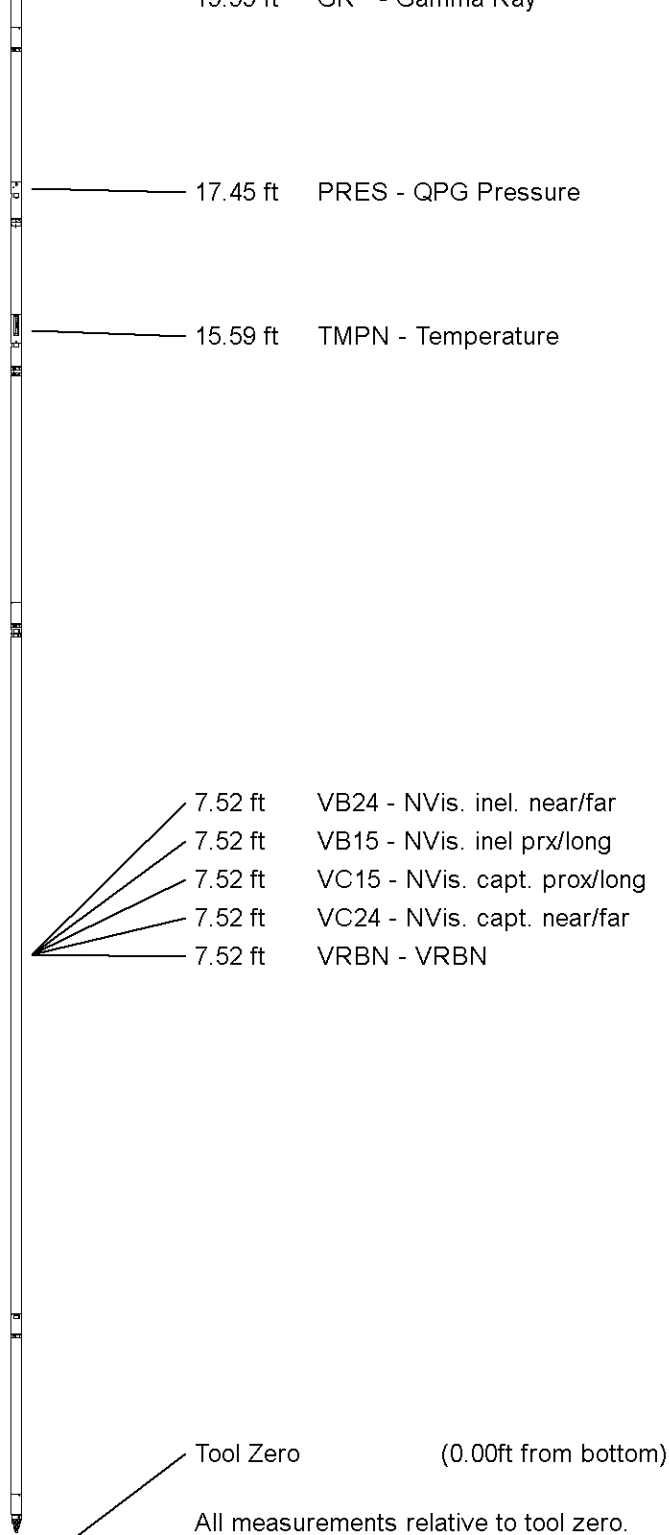
CRE series II processor section  
CRP-BA 129 LG: 3.31 ft WT: 15.4 lb OD: 1.654 in

Casing Reservoir Evaluation Tool Sonde  
CRM-BA 129 LG: 9.19 ft WT: 46.3 lb OD: 1.693 in

Gamma Ray K  
UGR-KA 131 LG: 2.34 ft WT: 17.6 lb OD: 1.693 in

Terminator sub  
TSH-C 0 LG: 0.27 ft WT: 2.2 lb OD: 1.654 in

Total Length: 28.60 ft Weight: 143.3 lb



## SHOP AND FIELD CALIBRATIONS

F:\PUCKETT\_31C\_26\_CRE\PUCKETT\_31C\_26\_CREB\_NVISION\_MAIN.dta

UGK Before survey cal UGR-KA 108

Field calibration on 26-APR-2017 13:22

Gamma Ray Before Survey Calibration

Tool Type: UGR-KA  
Calibrator No: MCGGRCC144

Serial No: 108

Background calibrator standard units

	39.7	852.4	486.5	API
Delta Counts Per Sec:	812.7	CPS/API = 1.671		

QPG Master Calibration    QPG-EA 141

Gauge

Serial Number    224867

Calibration Date    03 Apr 2013

Gauge Type    QHB108-16-177

Base Check Date

Max Pressure    16000 PSI

Max Temperature    177 Deg C

Min Pressure    13 PSI

Min Temperature    25 Deg C

Pressure

Pressure polynomial order    3

Temperature polynomial order    3

T0

T1

T2

T3

T4

P0

12.1908

0.549635

-0.0194284

1.05432e-005

P1

1.05432e-005

41.812

-0.0210446

2.67737e-005

P2

2.67737e-005

-5.40686e-008

-0.00200716

8.54172e-006

P3

8.54172e-006

-4.39823e-008

2.01386e-011

6.62637e-007

P4

Temperature

Temperature polynomial order    3

T0

T1

T2

T3

T4

24.9381

-0.729899

-0.00085548

-6.84964e-007

Temperature Tool Shop Survey Calibration    TMP-NA 137	
Temperature Tool Shop Survey Calibration	
Tool Type: TMP-NA	Serial No: 137

Calibration		
	Standard	Measured
32	DEGF	36714 Hz
212	DEGF	50849 Hz

UGK Before Survey Cal    UGR-KA 131	
-------------------------------------	--

## Gamma Ray Before Survey Calibration

Tool Type: UGR-KA  
Calibrator No: MCGGRCC144

Serial No: 131

Background	Calibrator	Standard	Units
------------	------------	----------	-------

27.9	848.9	486.5	API
------	-------	-------	-----

Delta Counts Per Sec: 821.0	CPS/API = 1.688
-----------------------------	-----------------

COMPANY	CAERUS OIL & GAS
WELL	PUCKETT 31C-26
FIELD	GRAND VALLEY
PROVINCE/COUNTY	GARFIELD
COUNTRY/STATE	USA / COLORADO

Elevation Kelly Bushing	8426	feet	Bottom Log Interval	8953.00	feet
Elevation Drill Floor	8426	feet	Depth Driller	9019.00	feet
Elevation Ground Level	8396	feet	Depth Logger	8953.00	feet


**Weatherford®**

RAPTOR NVISION LOG