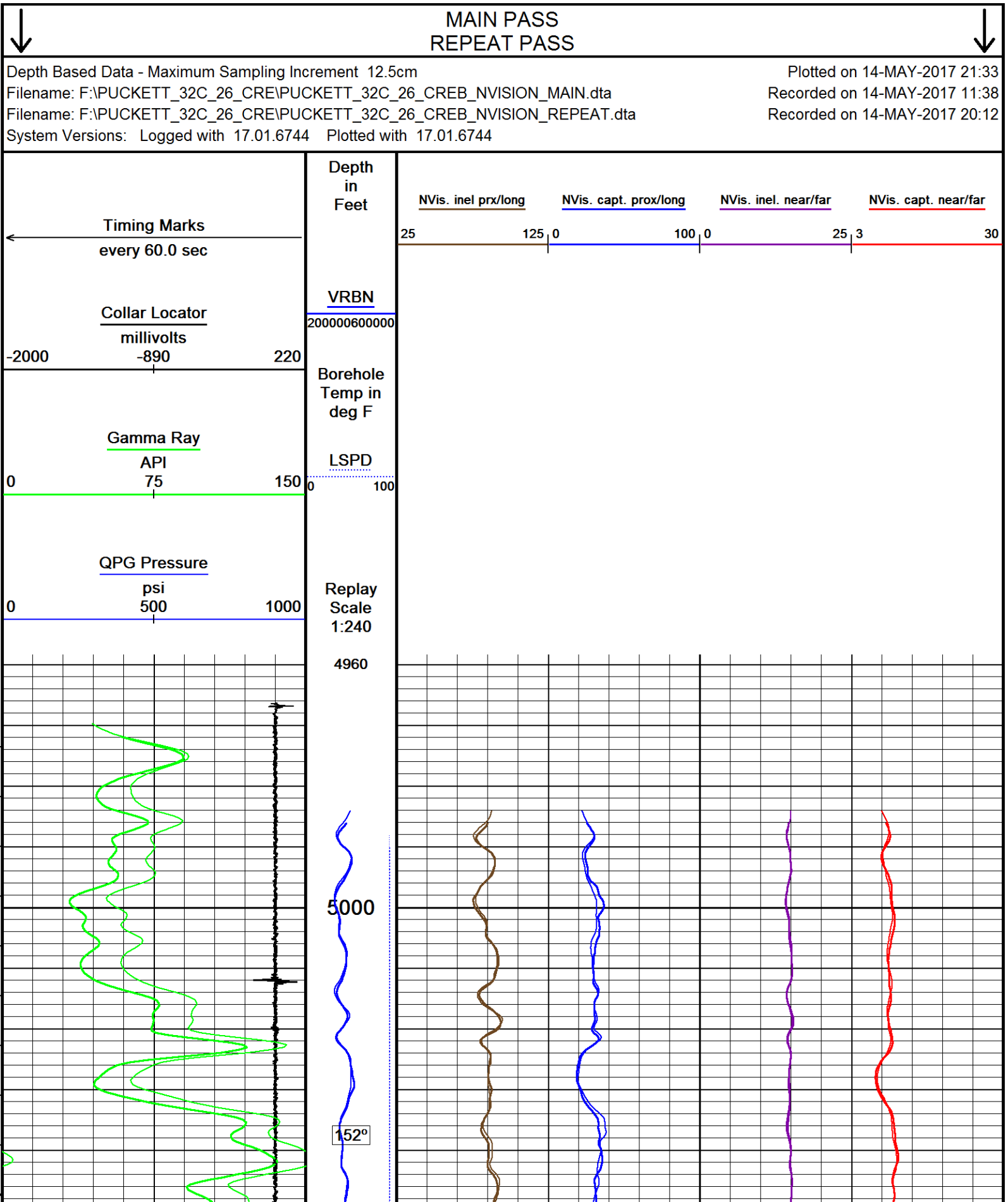
 Weatherford®				RAPTOR NVISION LOG							
COMPANY WELL FIELD PROVINCE/COUNTY COUNTRY/STATE LOCATION				CAERUS OIL & GAS PUCKETT 32C-26 GRAND VALLEY GARFIELD USA / COLORADO							
SEC 26		TWP 06S	RGE 97W	Other Services SBT							
Latitude											
Longitude											
API Number											
Permanent Datum GROUND LEVEL, Elevation 8396 feet				Elevations: KB 8426.00							
Log Measured From KB, 30.00 feet above Permanent Datum				DF 8426.00							
Drilling Measured From KB				GL 8396.00							
Date		14-MAY-2017		PERFORATION RECORD							
Run Number		ONE		Shot		Number		Depth From		Depth To	
Service Order		182008096		Density		of Shots		feet		feet	
Type Log		CREB									
Depth Driller		9023.00									
Depth Logger		9000.00									
Top Log Interval		5000.00									
Bottom Log Interval		9000.00									
Hole Fluid Type		WATER									
Hole Fluid Level		0.00									
Restriction ID		3.875									
Max Recorded Temp		236.00									
Well Head Pressure		0.00									
Well Head Equipment		N/A									
Time Well Ready		ROA		Size		Weight		Depth From		Depth To	
Time Logger Bottom		1130		inches		pounds/ft		feet		feet	
Unit		14333		4.500		11.60		0.00		8976.00	
Equipment Name		WSS-E									
Base		CASPER									
Recorded By		P. MAZUR									
Witnessed By		NOT WITNESSED									

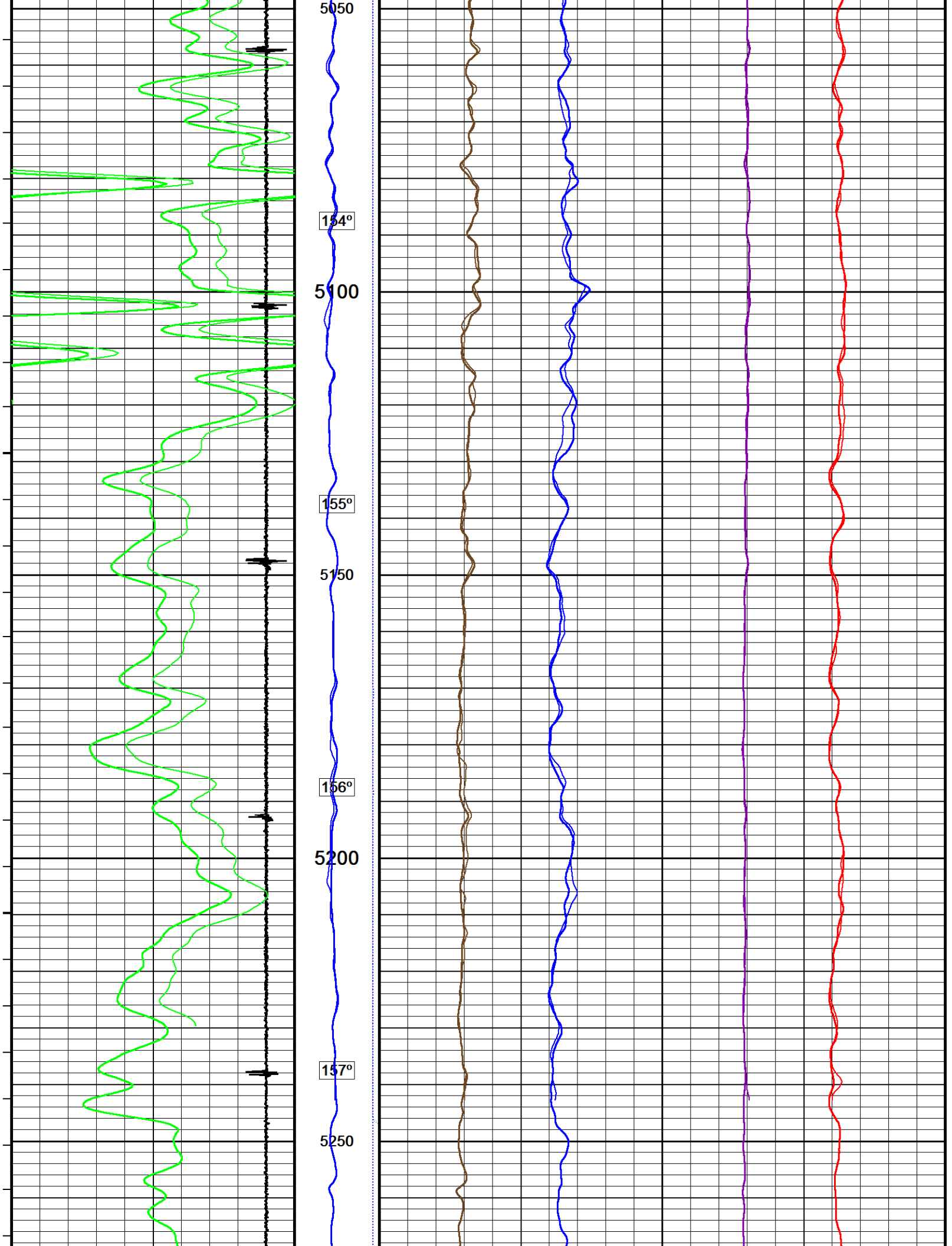
CASING / TUBING RECORD						
Type	Grade	TypeJoint	Size inches	Depth From feet	Shoe Depth feet	Weight pounds/ft
			4.500	0.00	8976.00	11.60

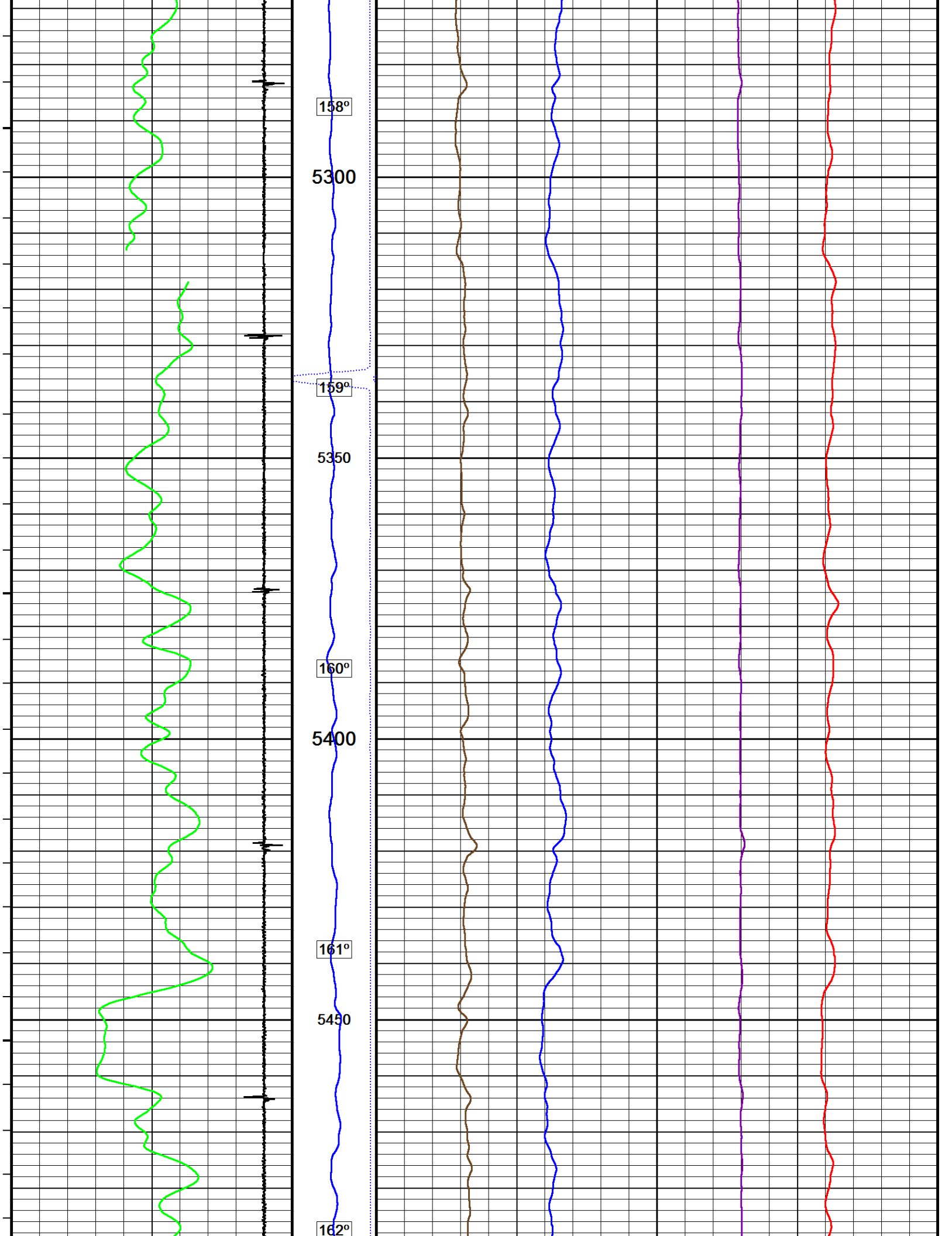
REMARKS
SOFTWARE VERSION 17.01.6744 - DEVELOPMENT BUILD VERSION
ALL DEPTH CONTROL PROCEDURES FOR SUBSEQUENT RUN IN HOLE WERE FOLLOWED. LOG RUN FROM 30' K.B.
SURFACE SYSTEM USED: WCM-D 307
TOOLS RUN: WCCC, UGRK, QPGE, TMPN, CRPB, CRMB, UGRK WERE RAN IN COMBINATION
GAMMA RAY COUNTS ON SUBSEQUENT PASSES ARE AFFECTED BY RESIDUAL NEUTRON ACTIVATION CAUSED BY THE PREVIOUS PASS
BOTTOM HOLE TEMPERATURE WAS DEG. 236F

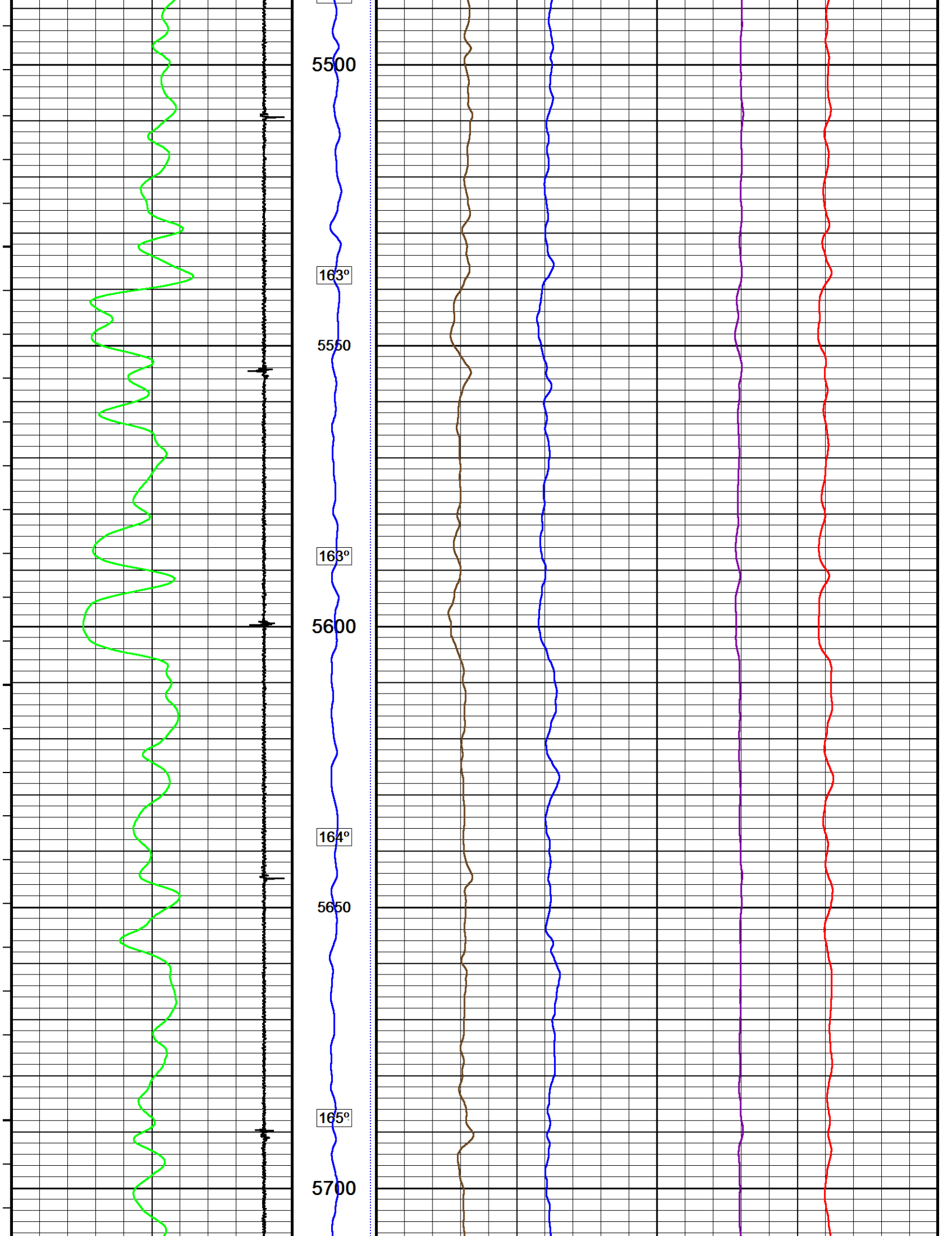
In interpreting, communicating or providing information and/or making recommendations, either written or oral, as to logs or test or other data, type or amount of material, or Work or other service to be furnished, or manner of performance, or in predicting results to be obtained, the Contractor will give the Company the benefit of the Contractor's best judgment based on its experience and will perform all such Work in a good and workmanlike manner. Any interpretation of test or other data, and any recommendation or reservoir description based upon such interpretations, are opinions based upon inferences from measurements and empirical relationships and assumptions, which inferences and assumptions are not infallible, and with respect to which professional engineers and analysts may differ. ACCORDINGLY ANY INTERPRETATION OR RECOMMENDATION RESULTING FROM THE SERVICES WILL BE AT THE SOLE RISK OF THE COMPANY, AND THE CONTRACTOR CANNOT AND DOES NOT WARRANT THE ACCURACY, CORRECTNESS OR COMPLETENESS OF ANY SUCH

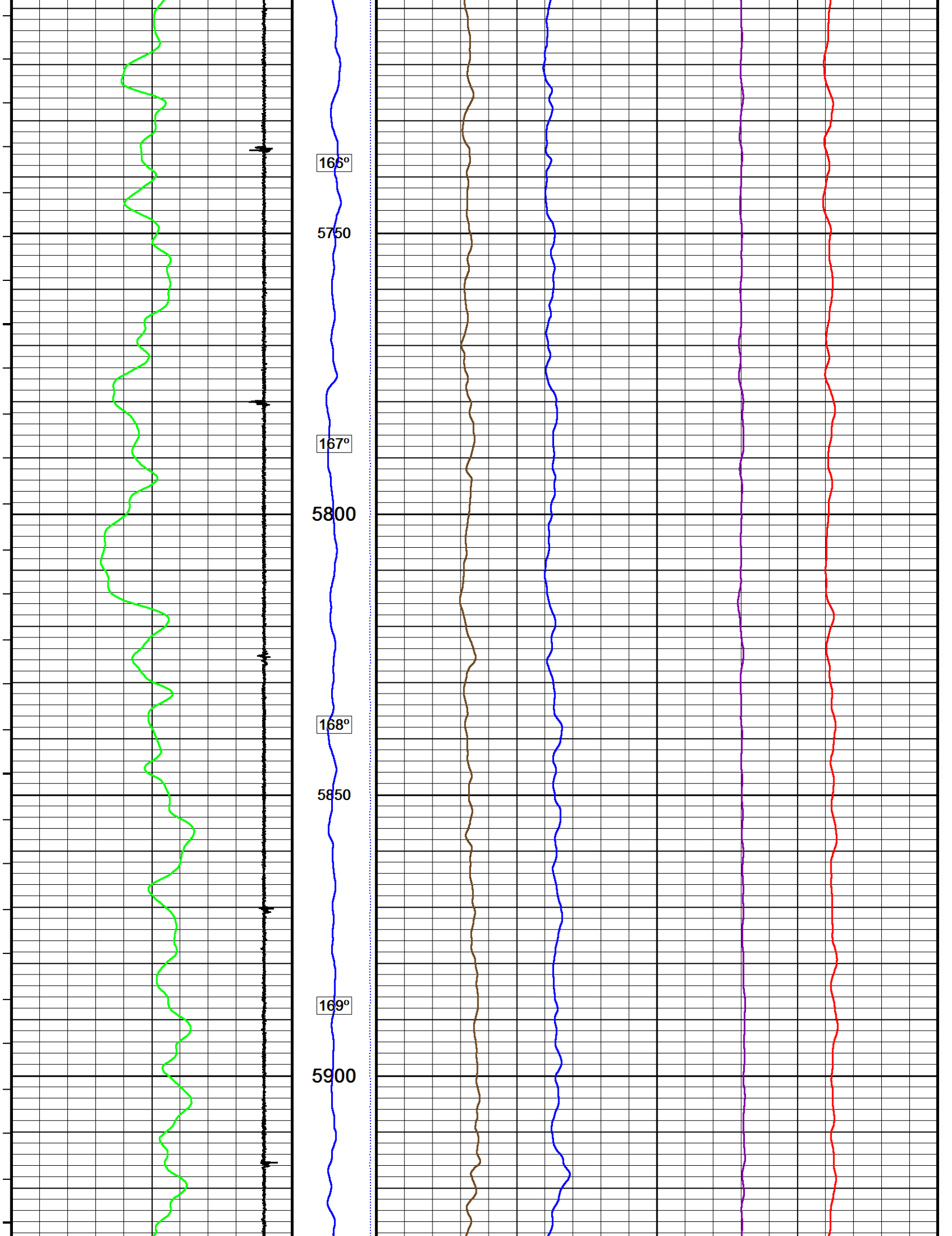
INTERPRETATION OR RECOMMENDATION, WHICH INTERPRETATIONS AND RECOMMENDATIONS SHOULD NOT, THEREFORE, UNDER ANY CIRCUMSTANCES BE RELIED UPON AS THE SOLE OR MAIN BASIS FOR ANY DRILLING, COMPLETION, WELL TREATMENT, PRODUCTION OR FINANCIAL DECISION, OR ANY PROCEDURE INVOLVING ANY RISK TO THE SAFETY OF ANY DRILLING ACTIVITY, DRILLING RIG OR ITS CREW OR ANY OTHER INDIVIDUAL. THE COMPANY HAS FULL RESPONSIBILITY FOR ALL DECISIONS CONCERNING THE SERVICES.

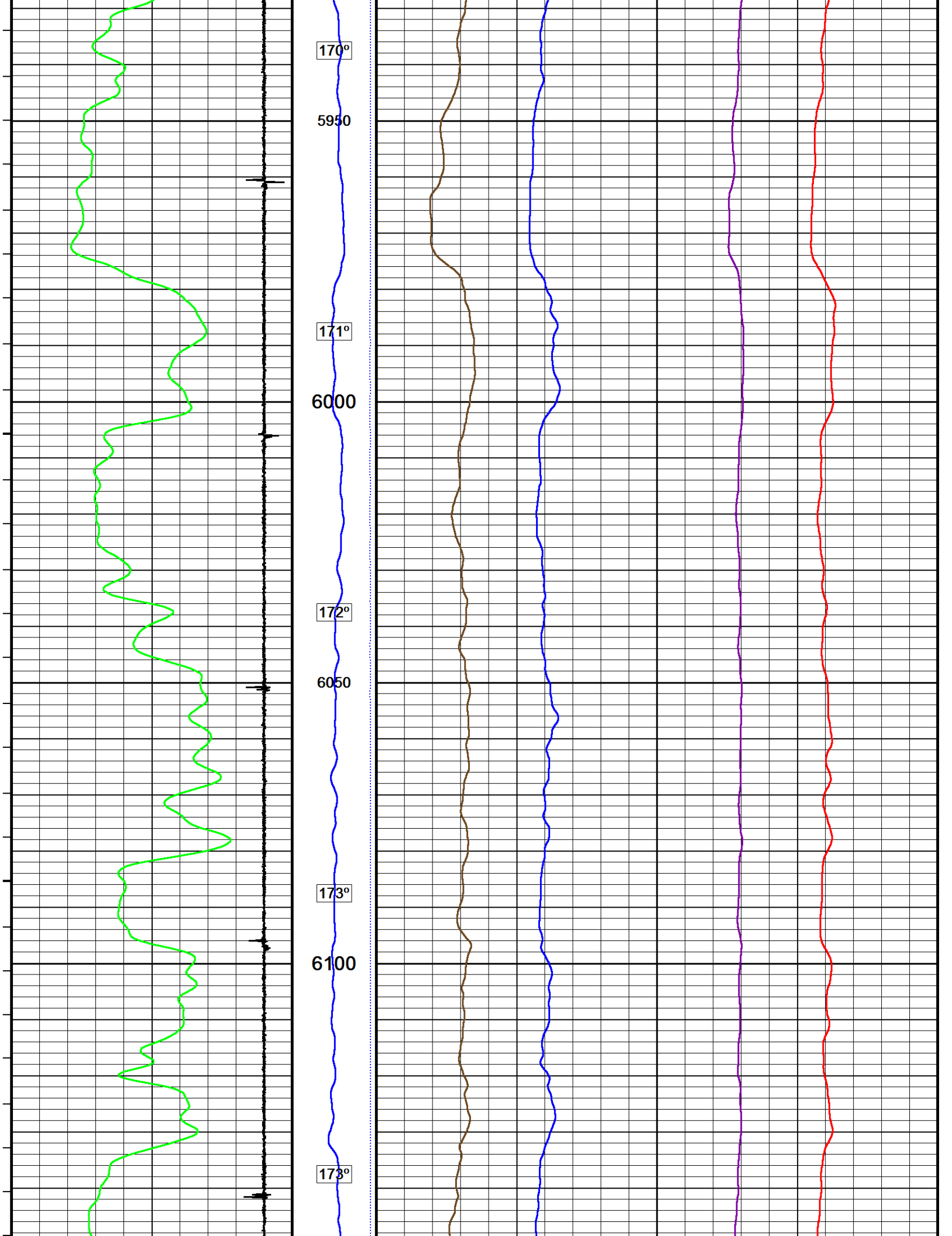


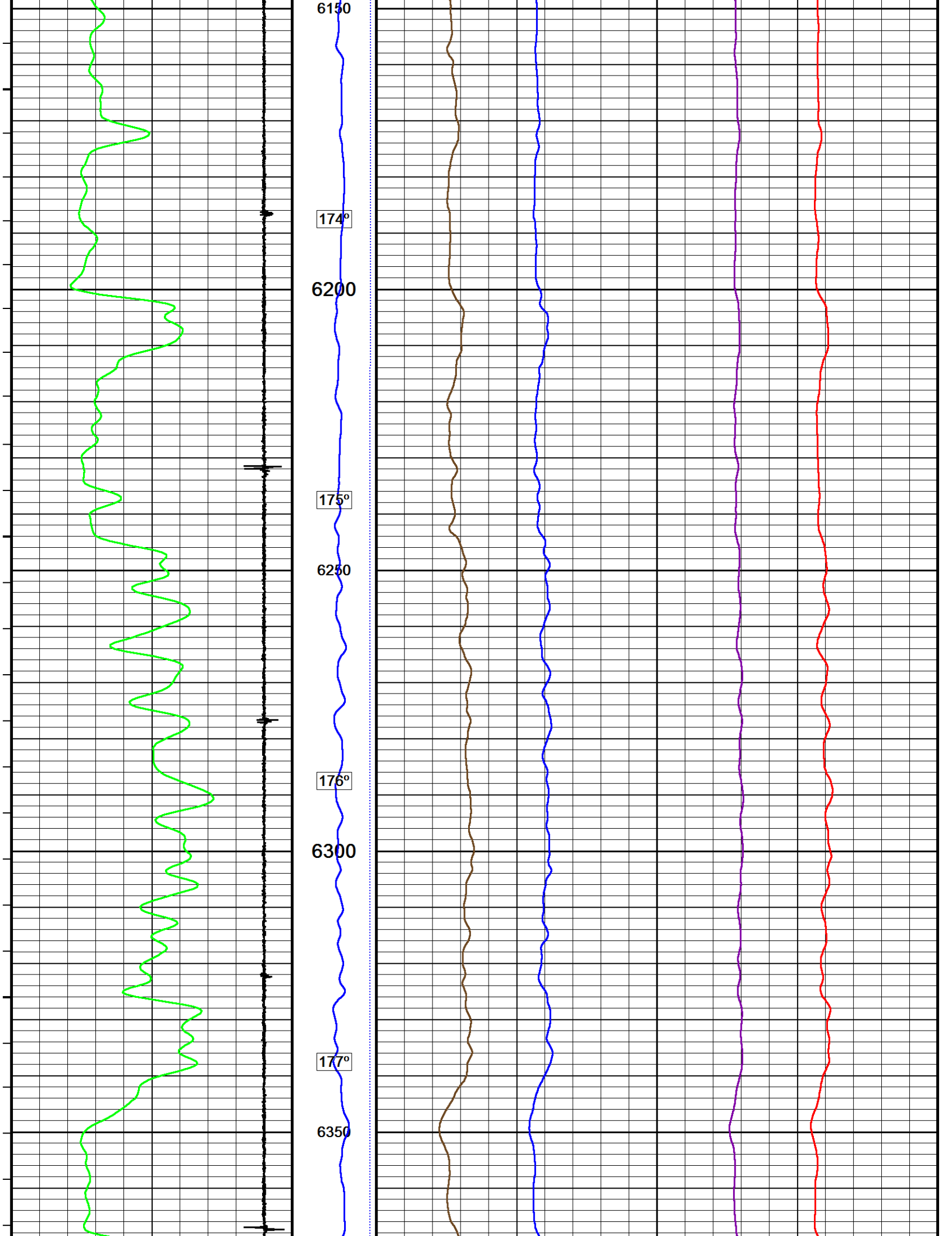


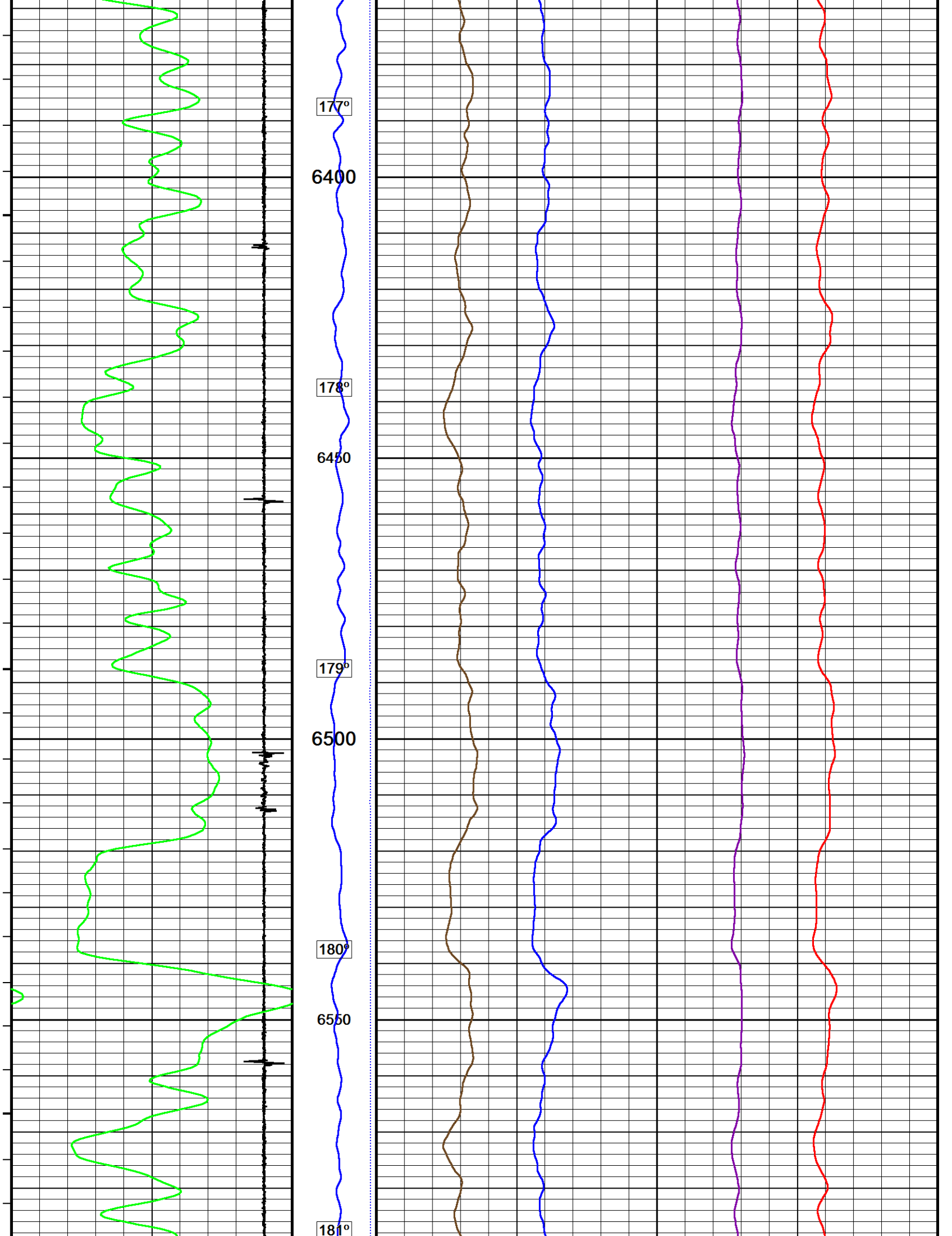


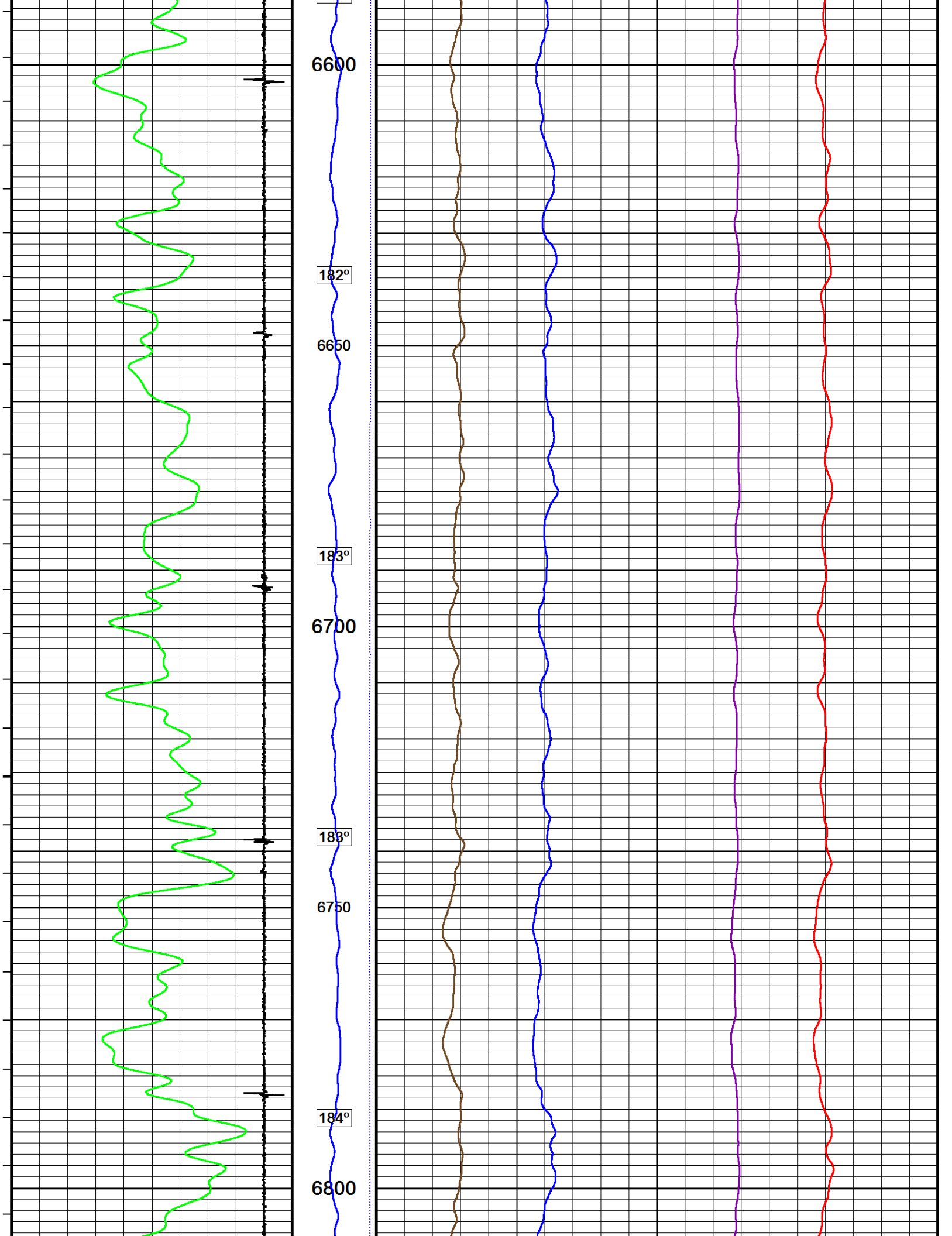


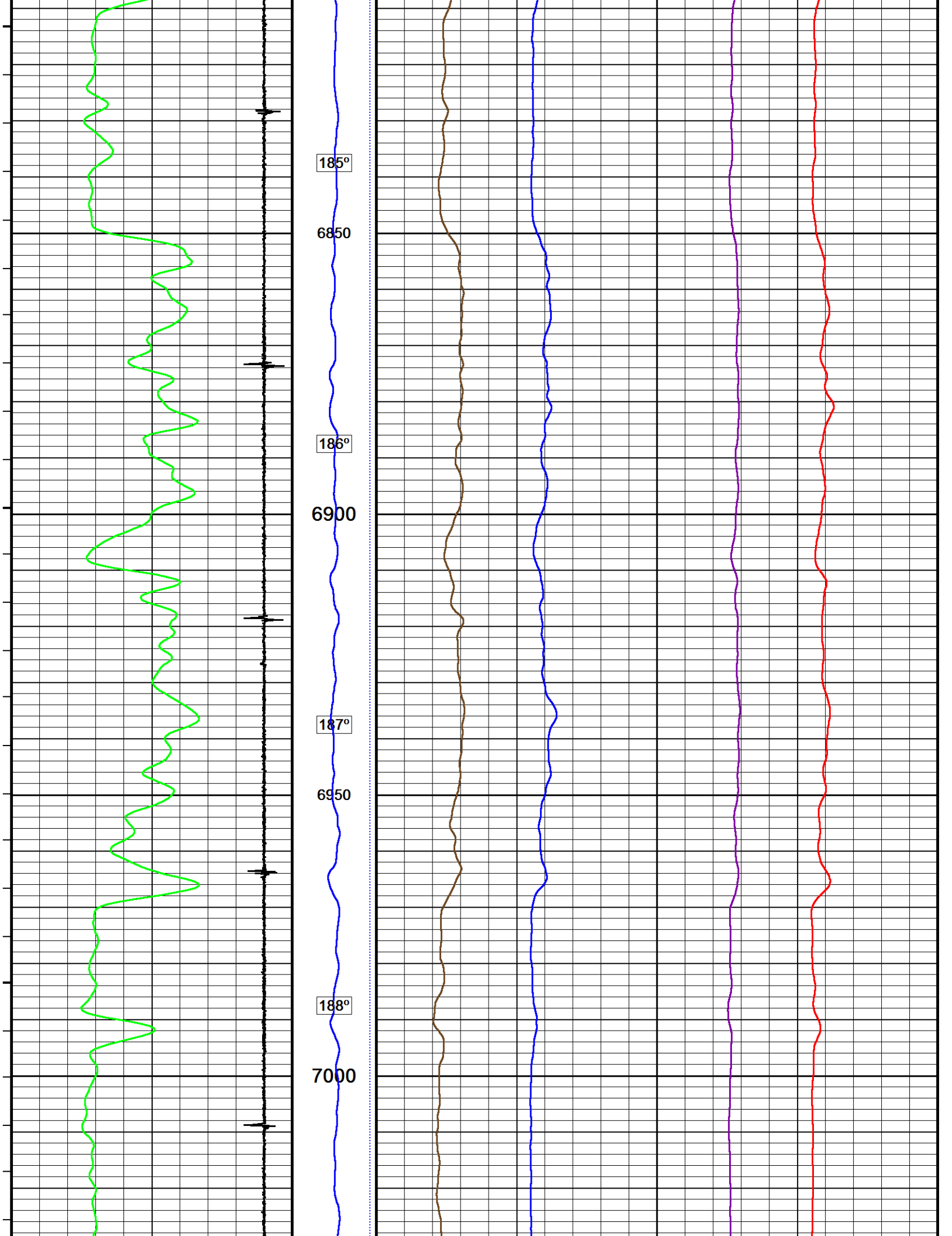


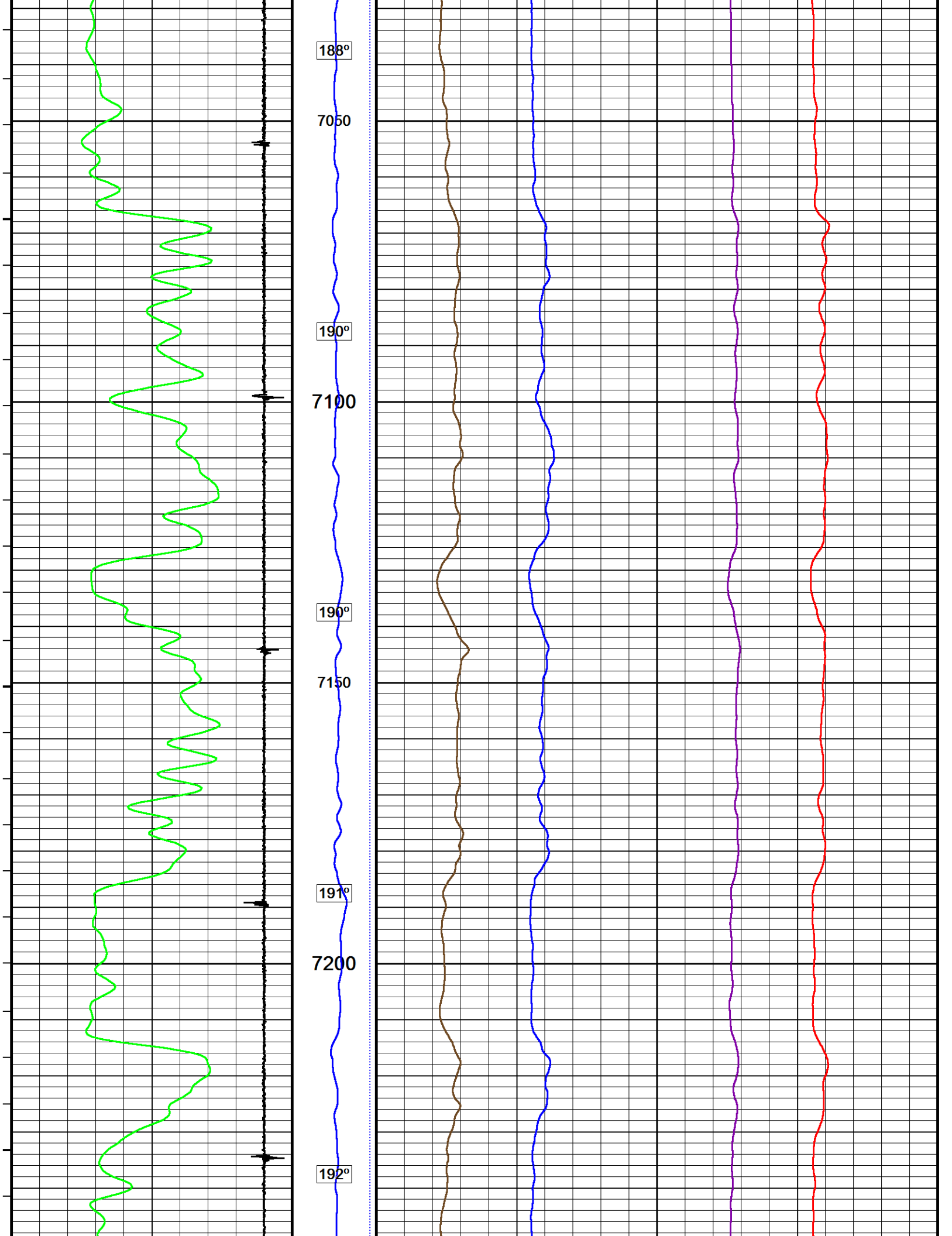


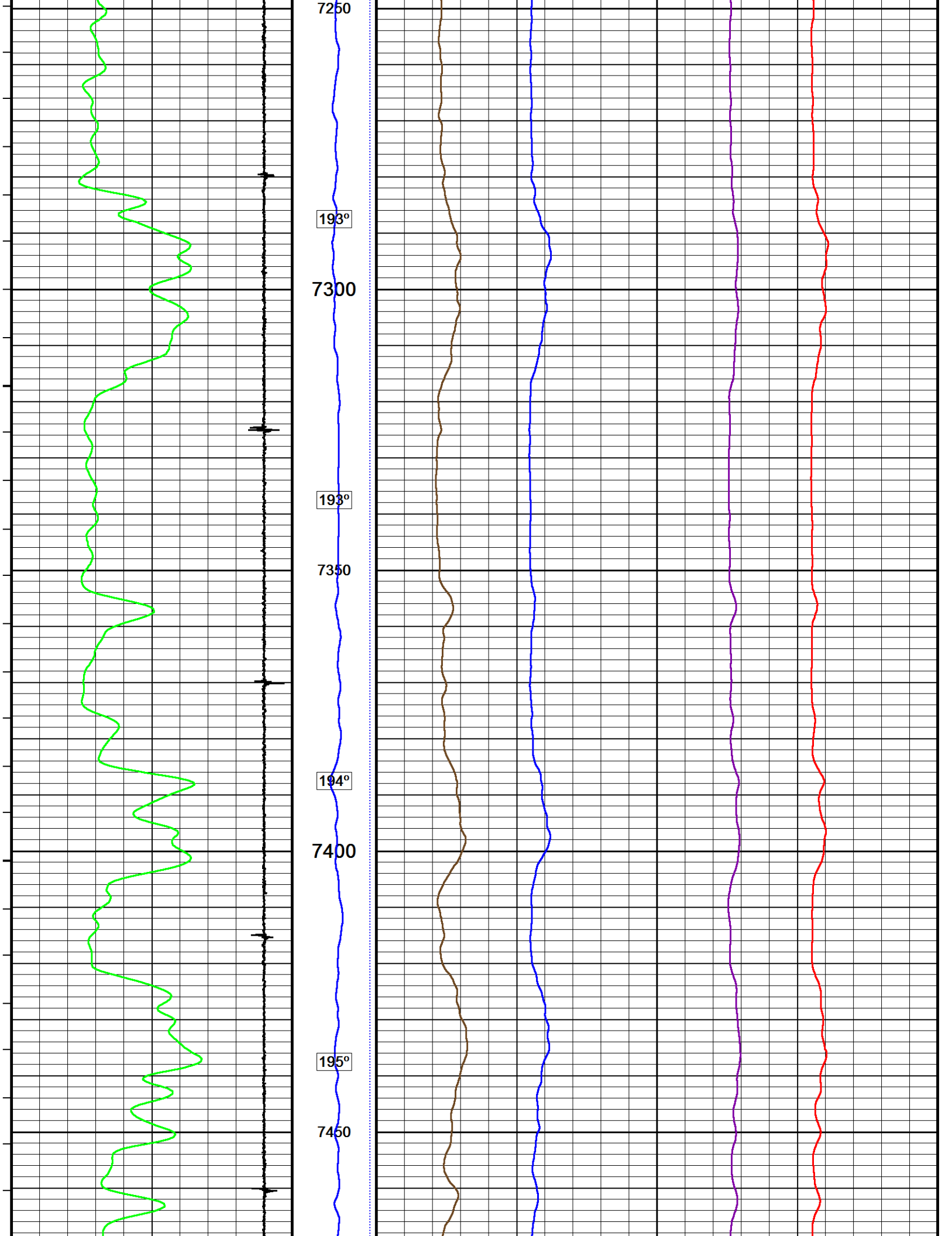


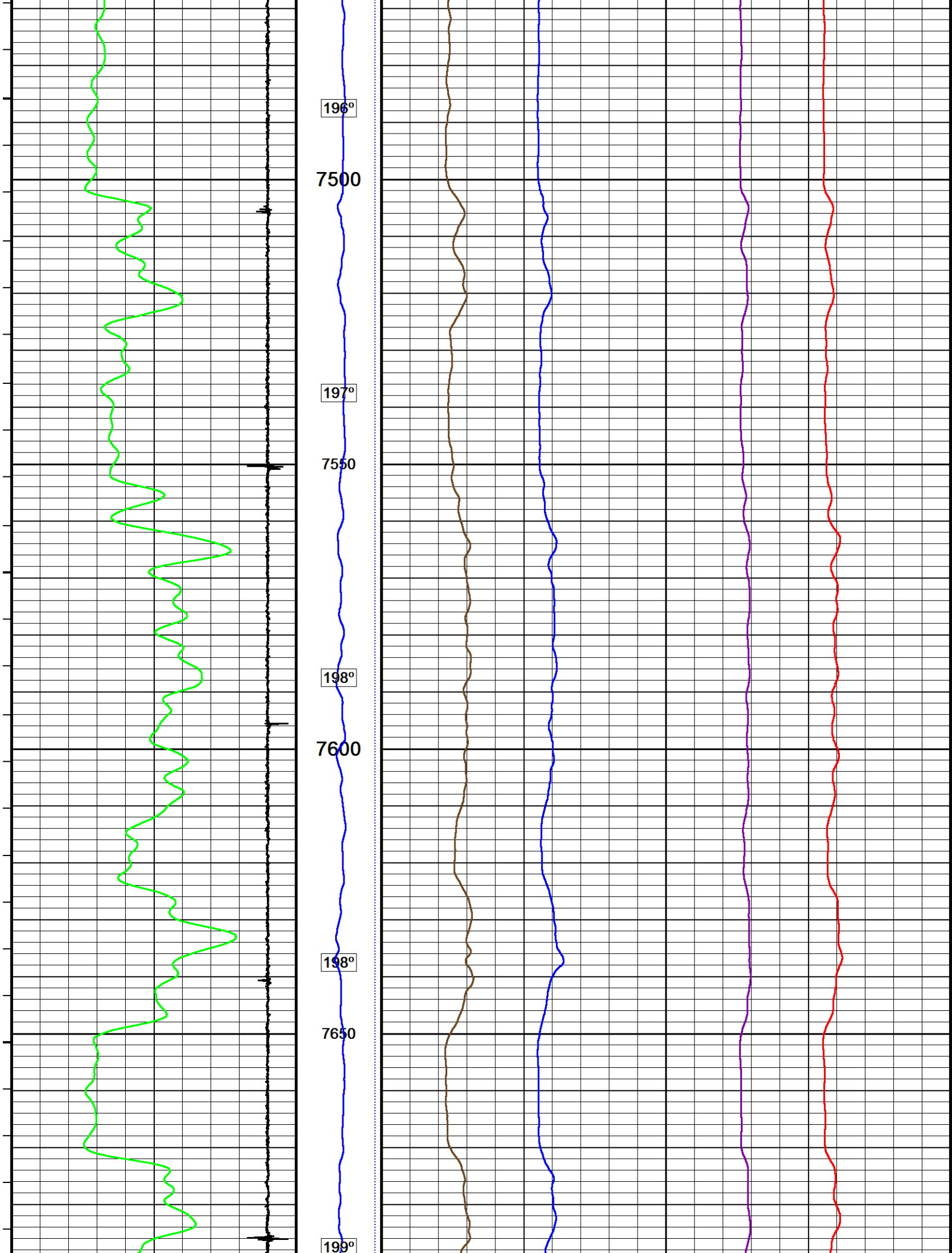


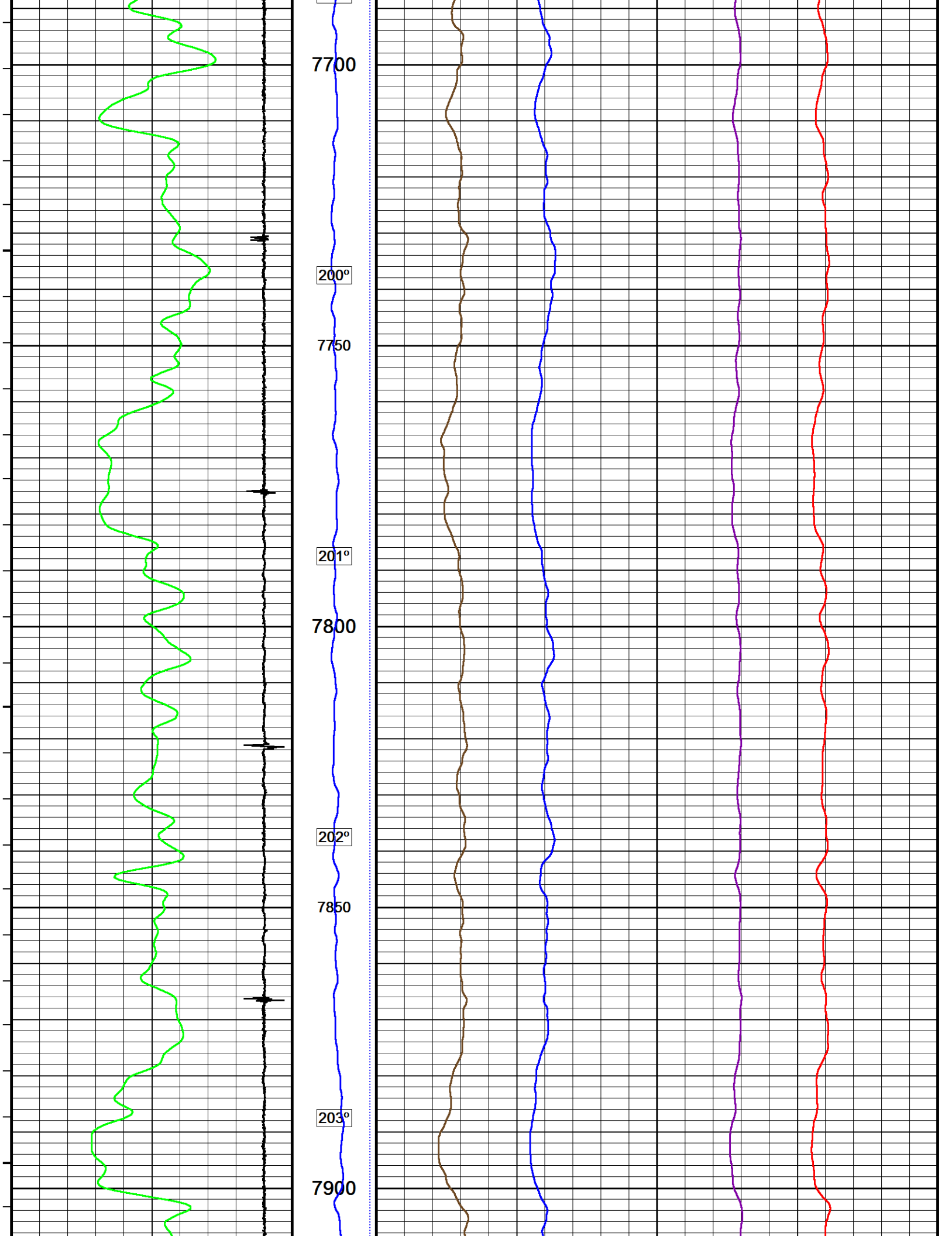


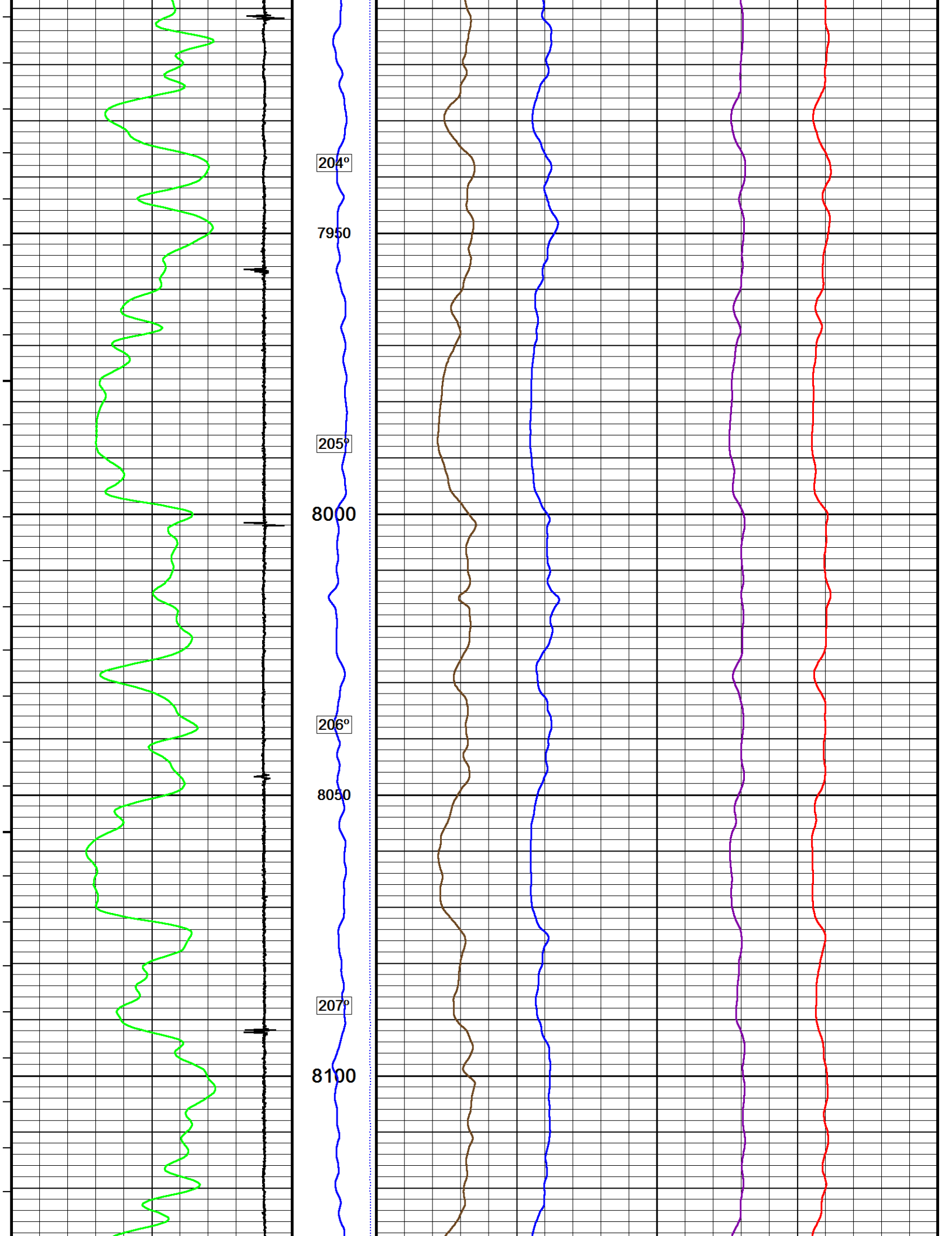


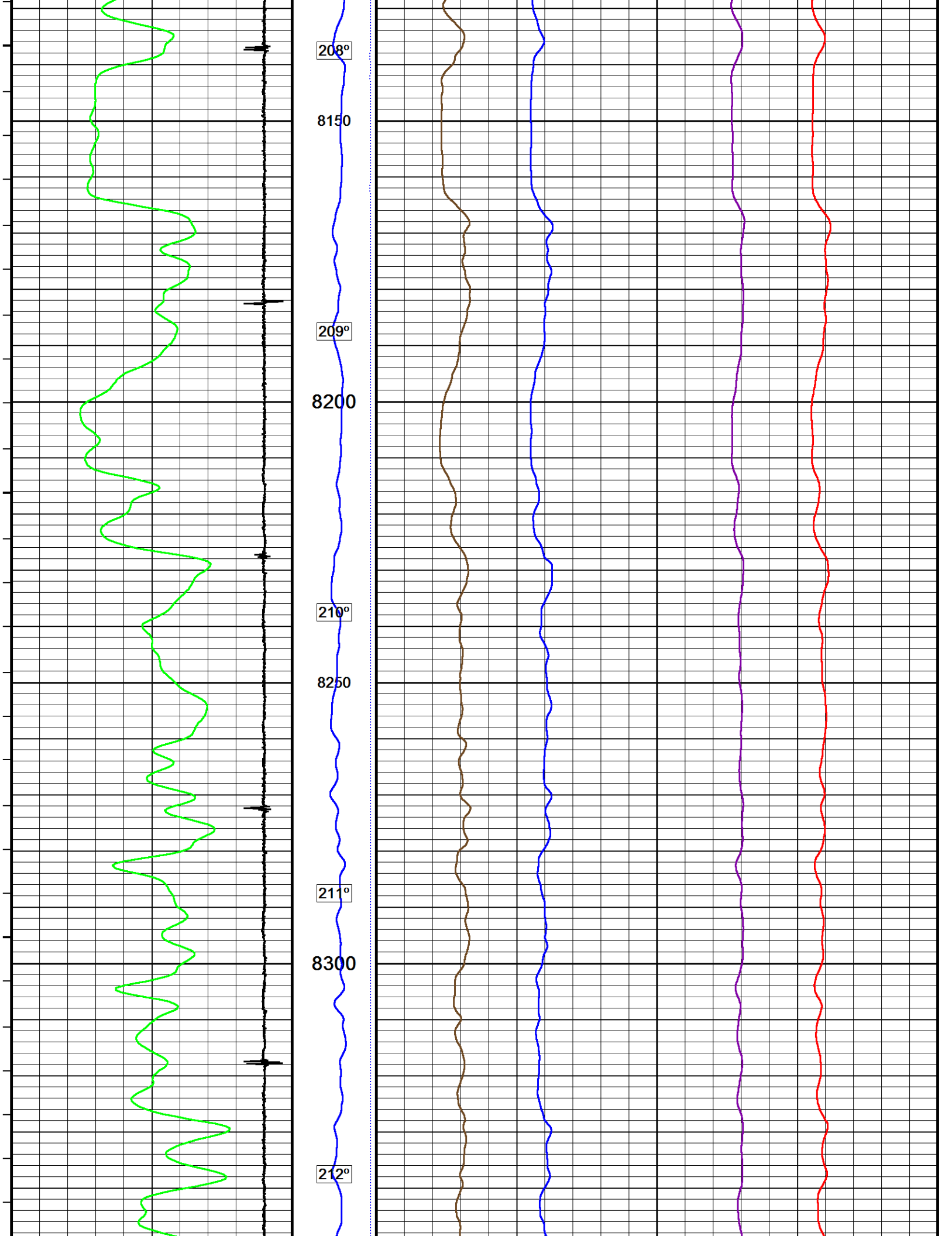


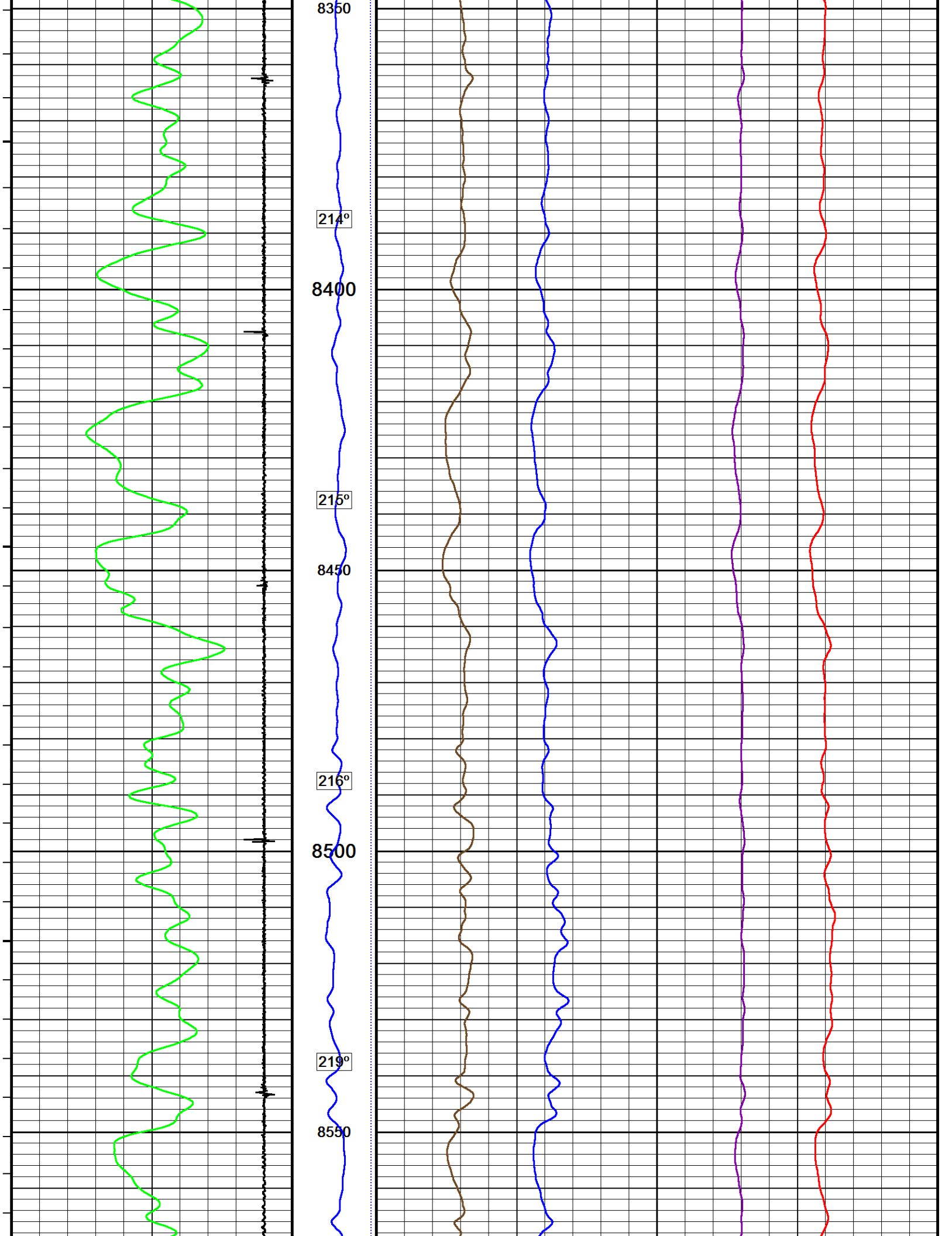


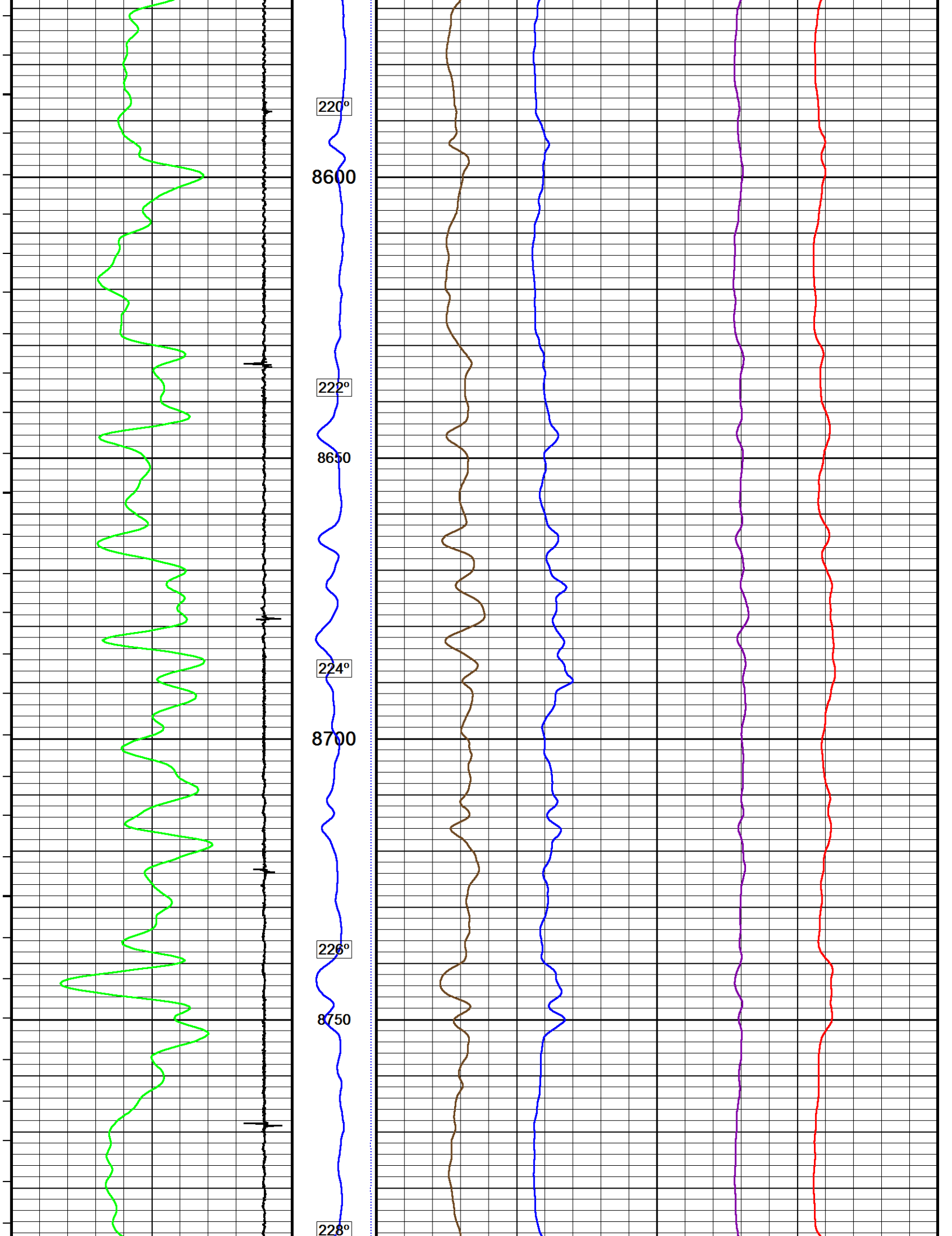


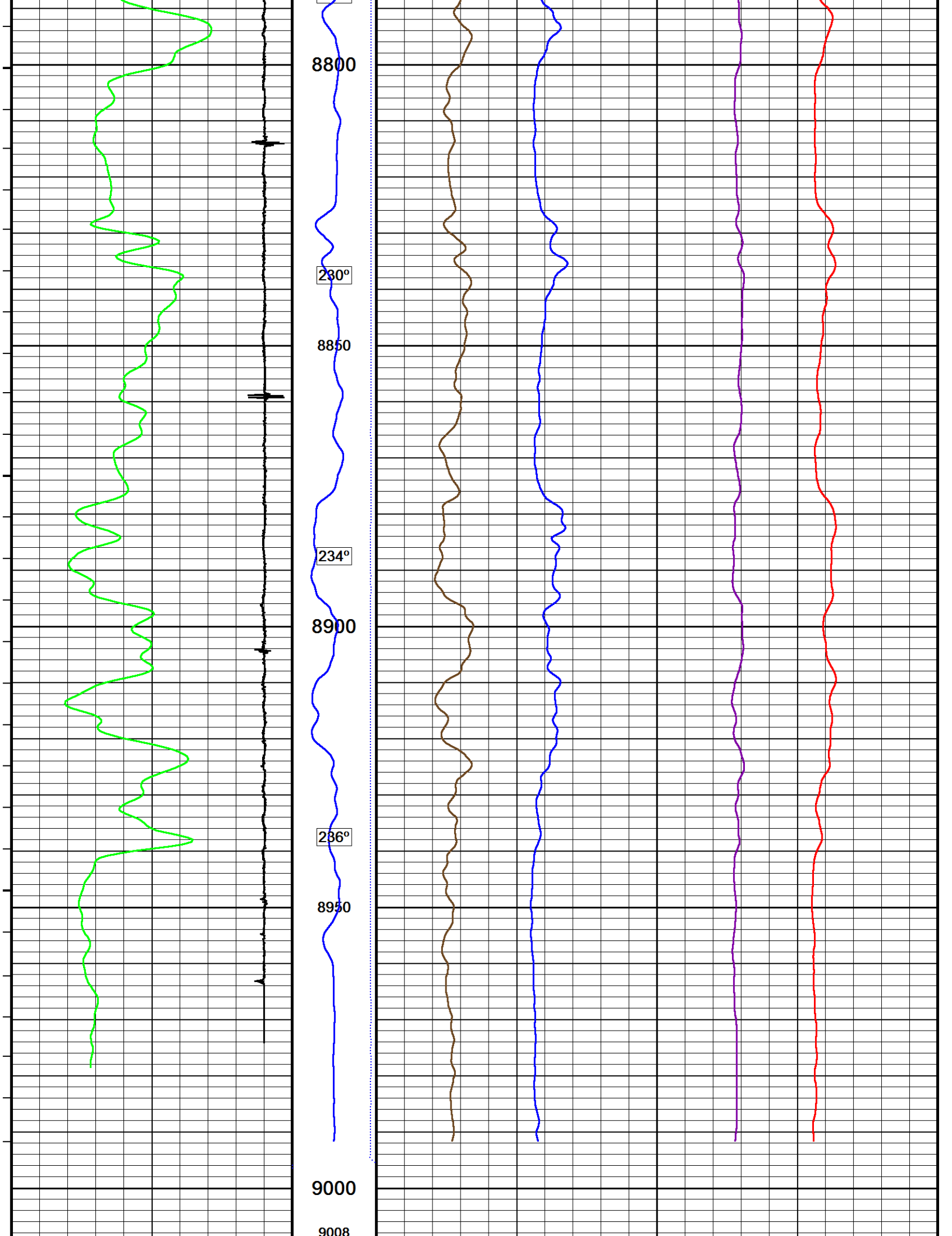


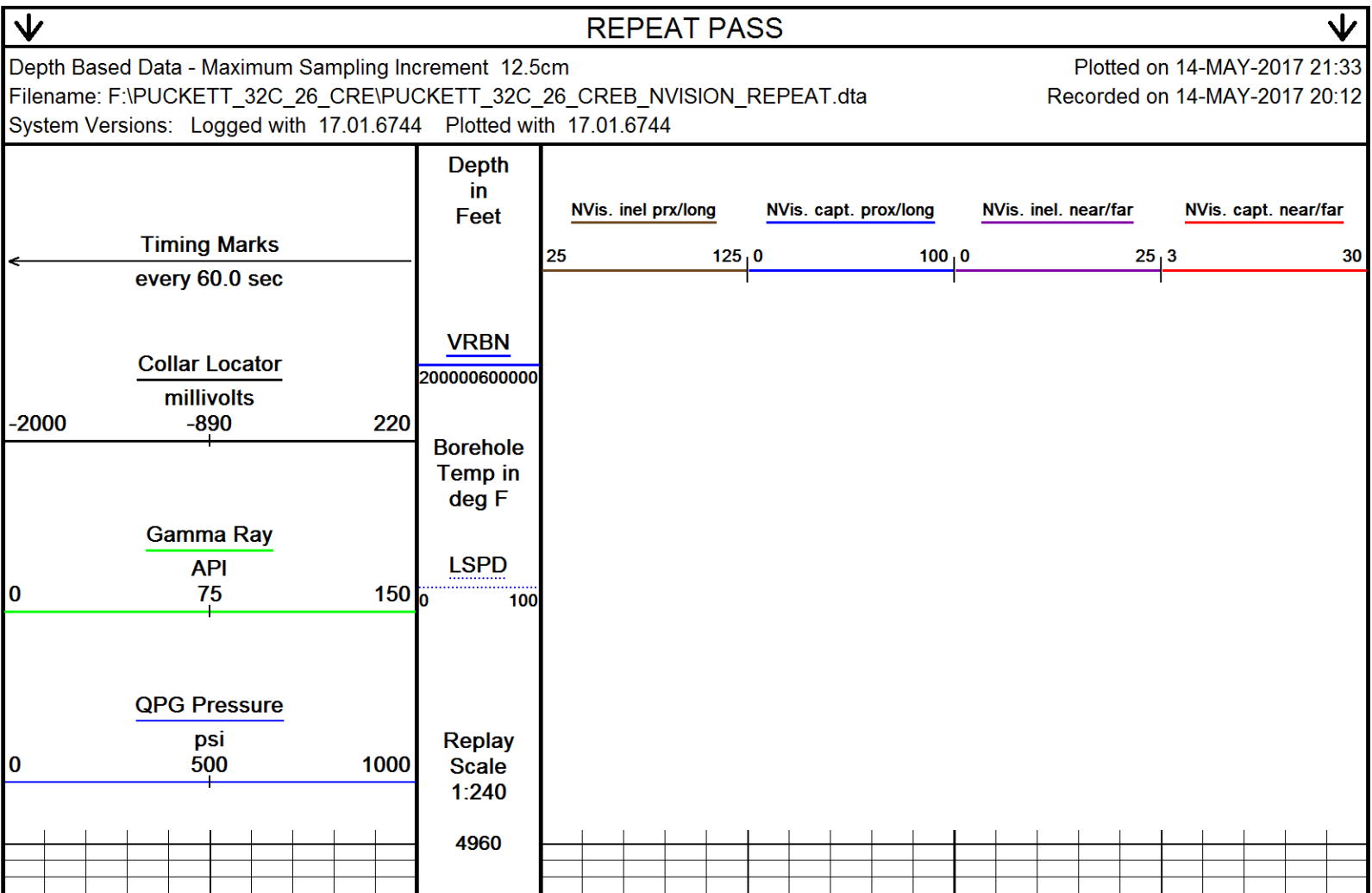
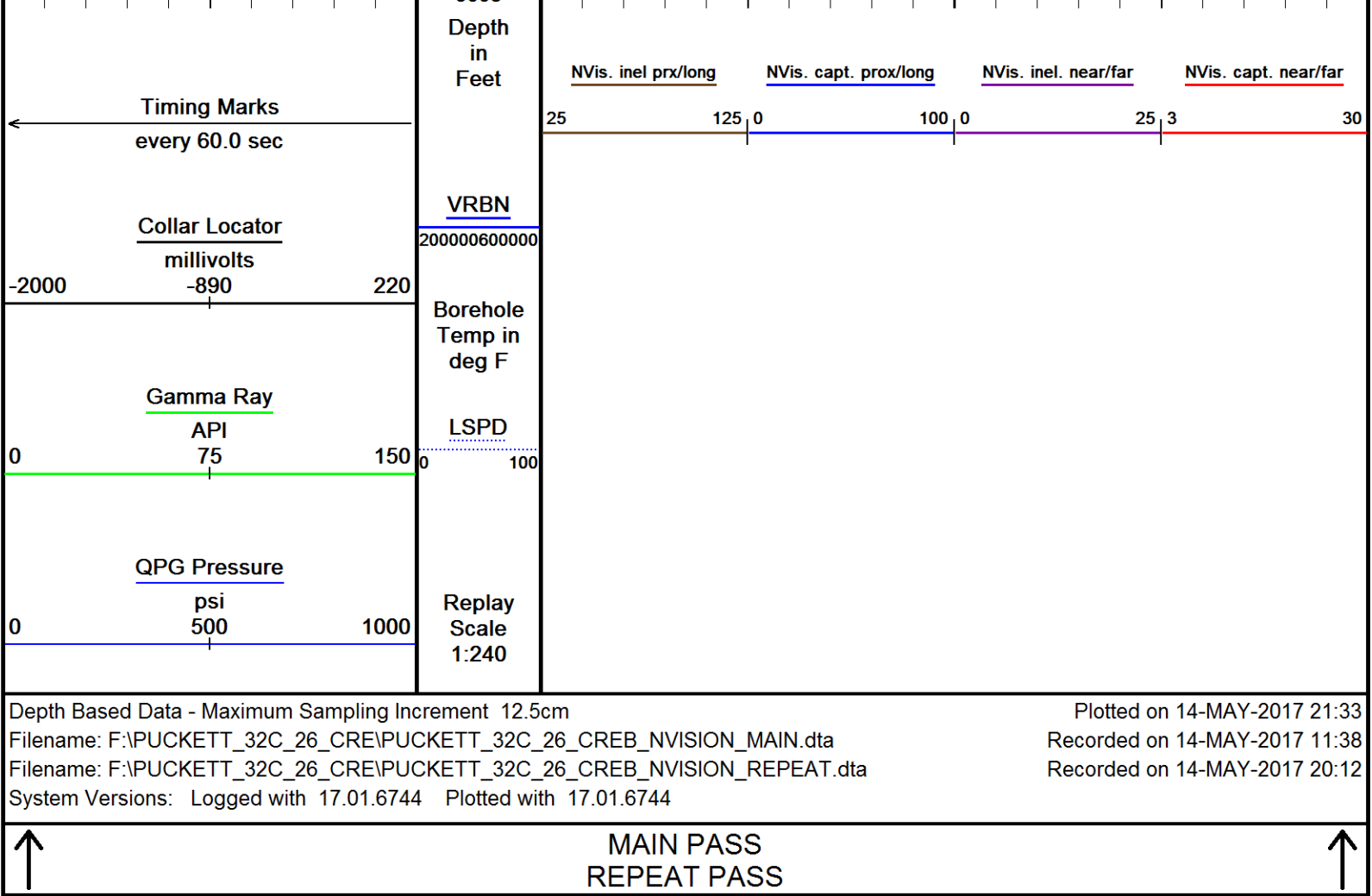


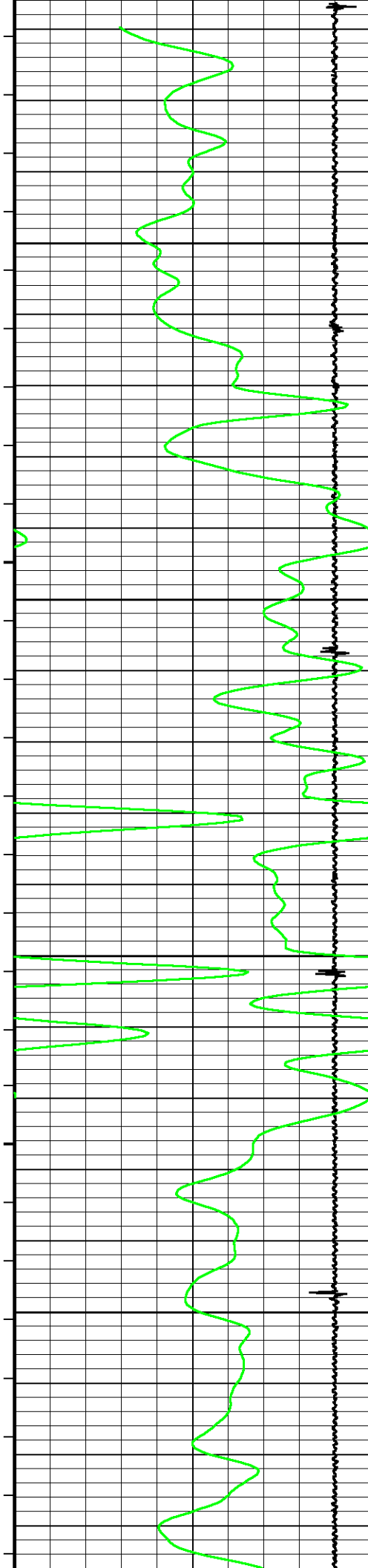












5000

152°

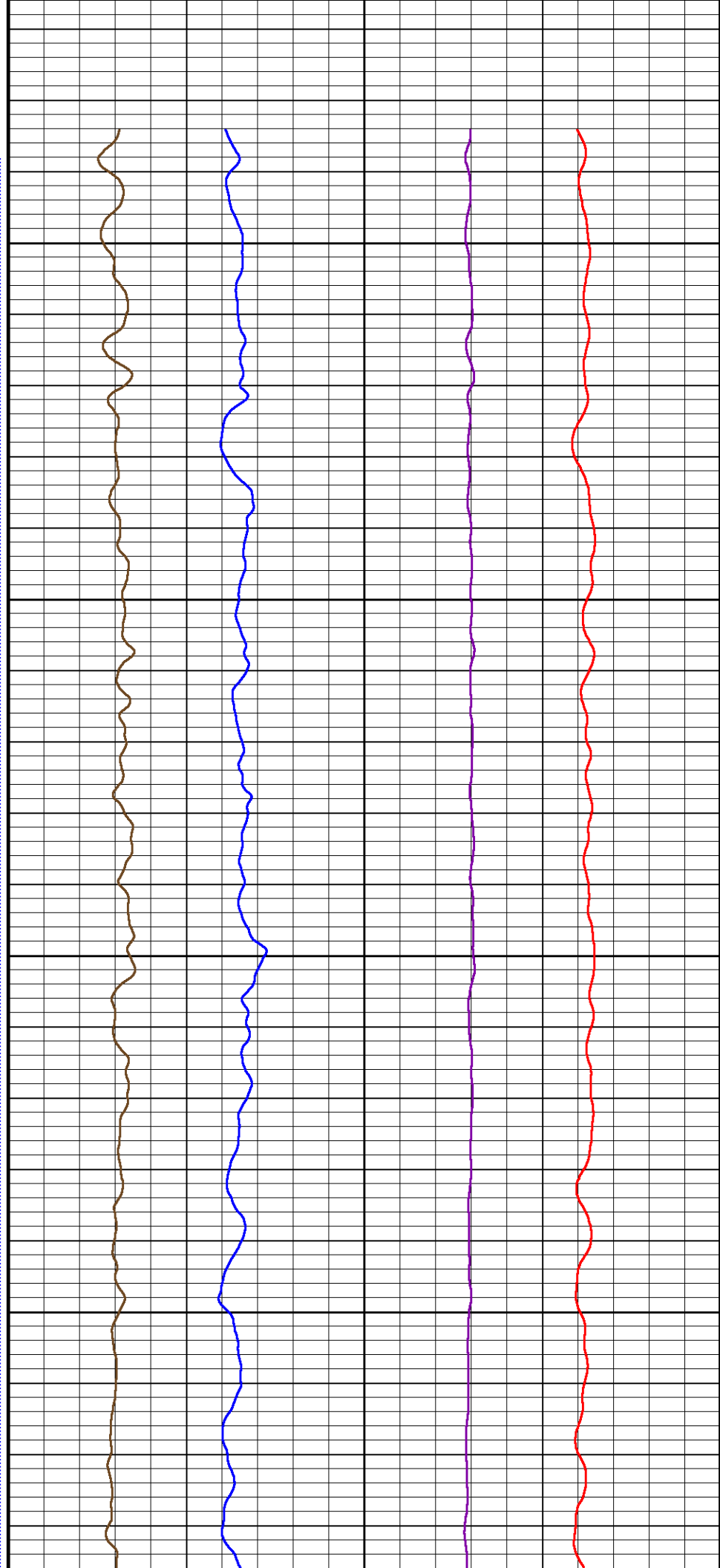
5050

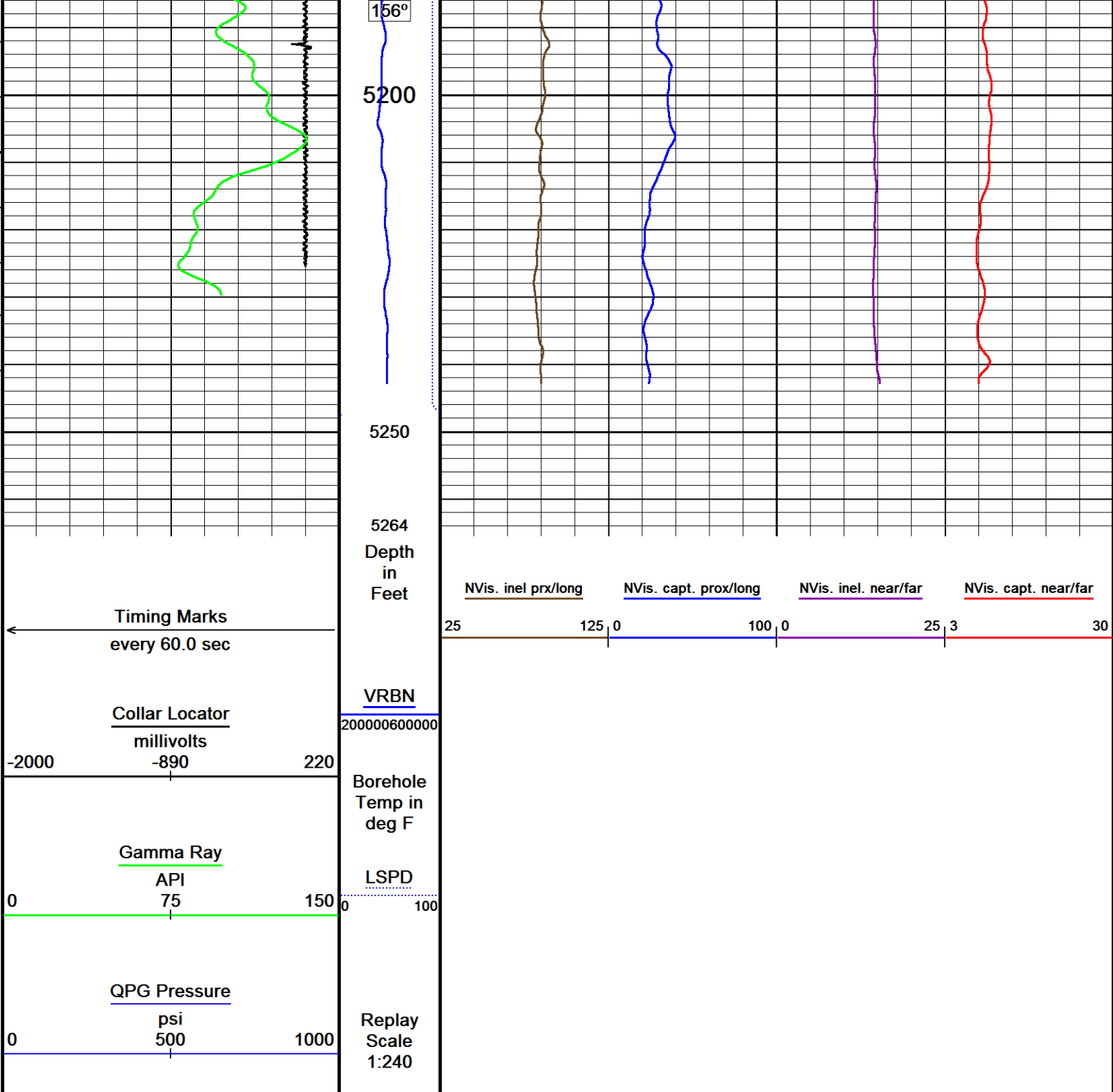
154°

5100

155°

5150





Depth Based Data - Maximum Sampling Increment 12.5cm

Filename: F:\PUCKETT_32C_26_CRE\PUCKETT_32C_26_CREB_NVISION_REPEAT.dta

System Versions: Logged with 17.01.6744 Plotted with 17.01.6744

Plotted on 14-MAY-2017 21:33

Recorded on 14-MAY-2017 20:12

↑ REPEAT PASS ↑

DOWNHOLE EQUIPMENT

F:\PUCKETT_32C_26_CRE\PUCKETT_32C_26_CREB_NVISION_MAIN.dta

Mono-Cablehead
MCH-AA 0 LG: 1.03 ft WT: 2.2 lb OD: 1.457 in

Comm Sub
WCC-CB 130 LG: 5.97 ft WT: 24.3 lb OD: 1.693 in



Gamma Ray K
UGR-KA 108 LG: 2.34 ft WT: 17.6 lb OD: 1.693 in

Quartz Press, Dual ITB, 43mm
QPG-EA 107 LG: 2.23 ft WT: 8.8 lb OD: 1.693 in

Tool Temperature, 43mm, 177C, 10-pin ITB
TMP-NA 137 LG: 1.93 ft WT: 8.8 lb OD: 1.693 in

CRE series II processor section
CRP-BA 129 LG: 3.31 ft WT: 15.4 lb OD: 1.654 in

Casing Reservoir Evaluation Tool Sonde
CRM-BA 129 LG: 9.19 ft WT: 46.3 lb OD: 1.693 in

Gamma Ray K
UGR-KA 131 LG: 2.34 ft WT: 17.6 lb OD: 1.693 in

Terminator sub
TSH-C 0 LG: 0.27 ft WT: 2.2 lb OD: 1.654 in

Total Length: 28.60 ft Weight: 143.3 lb

22.43 ft CCL - Collar Locator

19.99 ft GR - Gamma Ray

17.45 ft PRES - QPG Pressure

15.59 ft TMPN - Temperature

7.52 ft VB24 - NVis. incl. near/far
7.52 ft VB15 - NVis. incl prx/long
7.52 ft VC15 - NVis. capt. prox/long
7.52 ft VC24 - NVis. capt. near/far
7.52 ft VRBN - VRBN

Tool Zero (0.00ft from bottom)

All measurements relative to tool zero.

UGK Before Survey Cal UGR-KA 108

Field Calibration on 26-APR-2017 13:22

Gamma Ray Before Survey Calibration

Tool Type: UGR-KA
Calibrator No: MCGGRCC144

Serial No: 108

Background Calibrator Standard Units

39.7 852.4 486.5 API

Delta Counts Per Sec: 812.7 CPS/API = 1.671

QPG Master Calibration QPG-EA 107

Gauge

Serial Number 220929 Calibration Date 15 Sep 2012

Gauge Type QHB108-16-177 Base Check Date

Max Pressure 16000 PSI Max Temperature 177 Deg C

Min Pressure 13 PSI Min Temperature 25 Deg C

Pressure

Pressure polynomial order 3 Temperature polynomial order 3

T0 T1 T2 T3 T4

P0 14.1363 -0.231359 -0.0199948 9.69338e-006

P1 9.69338e-006 42.6942 -0.0212493 2.7973e-005

P2 2.7973e-005 -5.21212e-008 -0.00210258 8.46866e-006

P3 8.46866e-006 -4.68837e-008 2.25752e-011 7.55316e-007

P4

Temperature

Temperature polynomial order 3

T0 T1 T2 T3 T4

25.2281 -0.730006 -0.000855483 -6.83633e-007

Temperature Tool Shop survey calibration TMP-NA 137

Temperature Tool Shop Survey calibration

Tool Type: TMP-NA Serial No: 137

Tool Type: IMP-NA

Serial No: 137

Calibration

Standard		Measured
32	DEGF	36714 Hz
212	DEGF	50849 Hz

UGK Before survey cal UGR-KA 131

Field calibration on 26-APR-2017 13:52

Gamma Ray Before Survey Calibration

Tool Type: UGR-KA Serial No: 131
Calibrator No: MCGGRCC144

Background	Calibrator	Standard	Units
27.9	848.9	486.5	API
Delta Counts Per Sec: 821.0		CPS/API = 1.688	

COMPANY CAERUS OIL & GAS
WELL PUCKETT 32C-26
FIELD GRAND VALLEY
PROVINCE/COUNTY GARFIELD
COUNTRY/STATE USA / COLORADO

Elevation Kelly Bushing	8426	feet	Bottom Log Interval	9000.00	feet
Elevation Drill Floor	8426	feet	Depth Driller	9023.00	feet
Elevation Ground Level	8396	feet	Depth Logger	9000.00	feet

**Weatherford®**

RAPTOR NVISION LOG