										RAPTOR NVISION LOG									
COMPANY										CAERUS OIL & GAS									
WELL										PUCKETT 32A-26									
FIELD										GRAND VALLEY									
PROVINCE/COUNTY										GARFIELD									
COUNTRY/STATE										USA / COLORADO									
LOCATION										888' FNL & 1387' FEL									
SEC 26			TWP 06S			RGE 97W			Other Services										
Latitude			SBT																
Longitude																			
API Number																			
Permanent Datum GROUND LEVEL, Elevation 8396 feet										Elevations: feet									
Log Measured From KB, 30.00 feet above Permanent Datum										KB 8426.00									
Drilling Measured From KB										DF 8426.00									
										GL 8396.00									
Date										13-MAY-2017									
Run Number										ONE									
Service Order										181918549									
Type Log										CREB									
Depth Driller										9032.00 feet									
Depth Logger										8913.00 feet									
Top Log Interval										5000.00 feet									
Bottom Log Interval										8913.00 feet									
Hole Fluid Type										WATER									
Hole Fluid Level										0.00 feet									
Restriction ID										3.875 inches									
Max Recorded Temp										236.00 deg F									
Well Head Pressure										0.00 psi									
Well Head Equipment										N/A									
Time Well Ready										ROA									
Time Logger Bottom										1200									
Unit										14333									
Equipment Name										WSS-E									
Base										CASPER									
Recorded By										P. MAZUR									
Witnessed By										NOT WITNESSED									

CASING / TUBING RECORD						
Type	Grade	TypeJoint	Size inches	Depth From feet	Shoe Depth feet	Weight pounds/ft
			4.500	0.00	8976.00	11.60

REMARKS
SOFTWARE VERSION 17.01.6744 - DEVELOPMENT BUILD VERSION
ALL DEPTH CONTROL PROCEDURES FOR SUBSEQUENT RUN IN HOLE WERE FOLLOWED. LOG RUN FROM 30' K.B.
SURFACE SYSTEM USED: WCM-D 307
TOOLS RUN: WCCC, UGRK, QPGE, TMPN, CRPB, CRMB, UGRK WERE RAN IN COMBINATION
GAMMA RAY COUNTS ON SUBSEQUENT PASSES ARE AFFECTED BY RESIDUAL NEUTRON ACTIVATION CAUSED BY THE PREVIOUS PASS
BOTTOM HOLE TEMPERATURE WAS DEG. 236F

In interpreting, communicating or providing information and/or making recommendations, either written or oral, as to logs or test or other data, type or amount of material, or Work or other service to be furnished, or manner of performance, or in predicting results to be obtained, the Contractor will give the Company the benefit of the Contractor's best judgment based on its experience and will perform all such Work in a good and workmanlike manner. Any interpretation of test or other data, and any recommendation or reservoir description based upon such interpretations, are opinions based upon inferences from measurements and empirical relationships and assumptions, which inferences and assumptions are not infallible, and with respect to which professional engineers and analysts may differ. ACCORDINGLY ANY INTERPRETATION OR RECOMMENDATION RESULTING FROM THE SERVICES WILL BE AT THE SOLE RISK OF THE COMPANY, AND THE CONTRACTOR CANNOT AND DOES NOT WARRANT THE ACCURACY, CORRECTNESS OR COMPLETENESS OF ANY SUCH

INTERPRETATION OR RECOMMENDATION, WHICH INTERPRETATIONS AND RECOMMENDATIONS SHOULD NOT, THEREFORE, UNDER ANY CIRCUMSTANCES BE RELIED UPON AS THE SOLE OR MAIN BASIS FOR ANY DRILLING, COMPLETION, WELL TREATMENT, PRODUCTION OR FINANCIAL DECISION, OR ANY PROCEDURE INVOLVING ANY RISK TO THE SAFETY OF ANY DRILLING ACTIVITY, DRILLING RIG OR ITS CREW OR ANY OTHER INDIVIDUAL. THE COMPANY HAS FULL RESPONSIBILITY FOR ALL DECISIONS CONCERNING THE SERVICES.

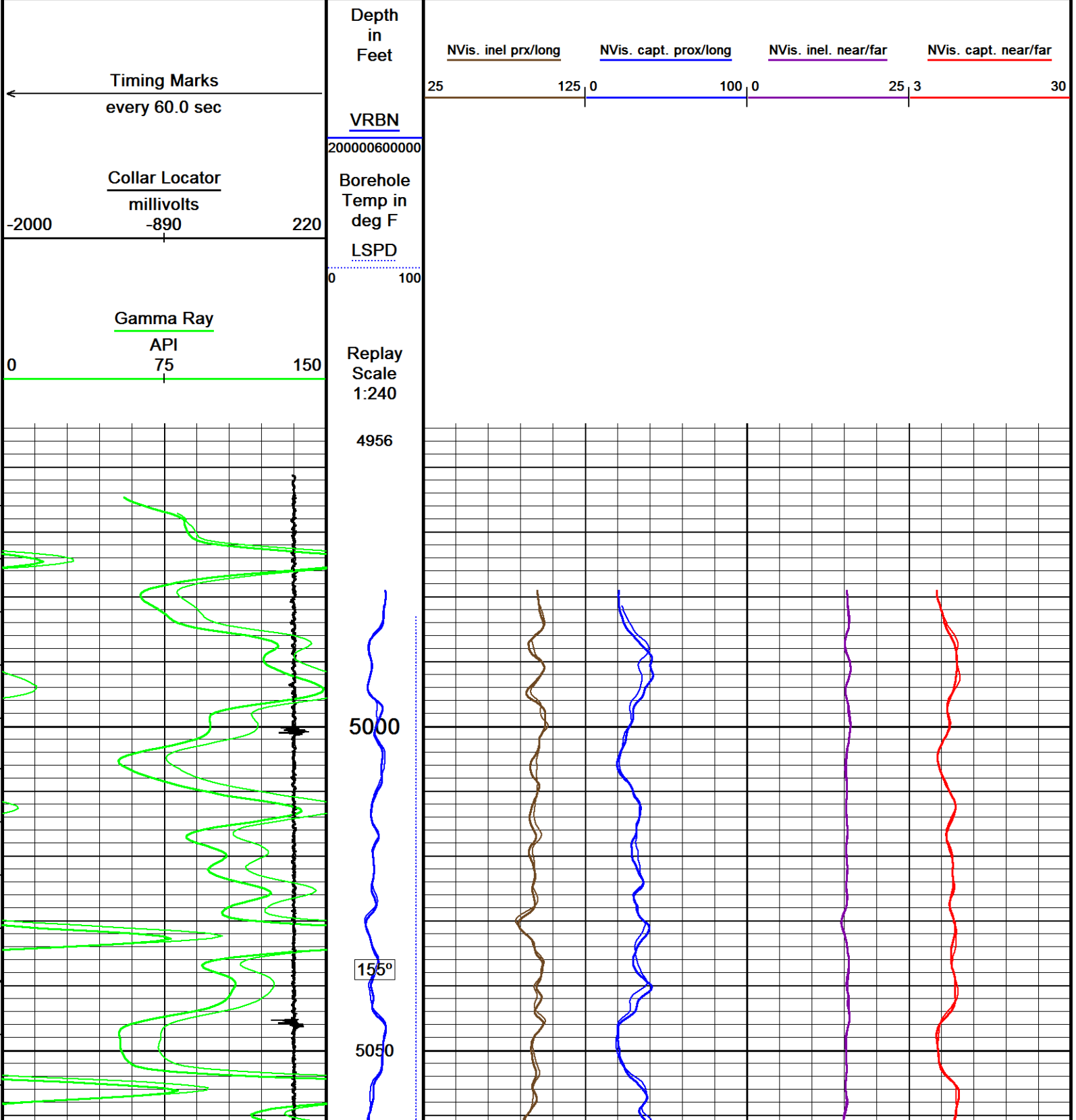
↓

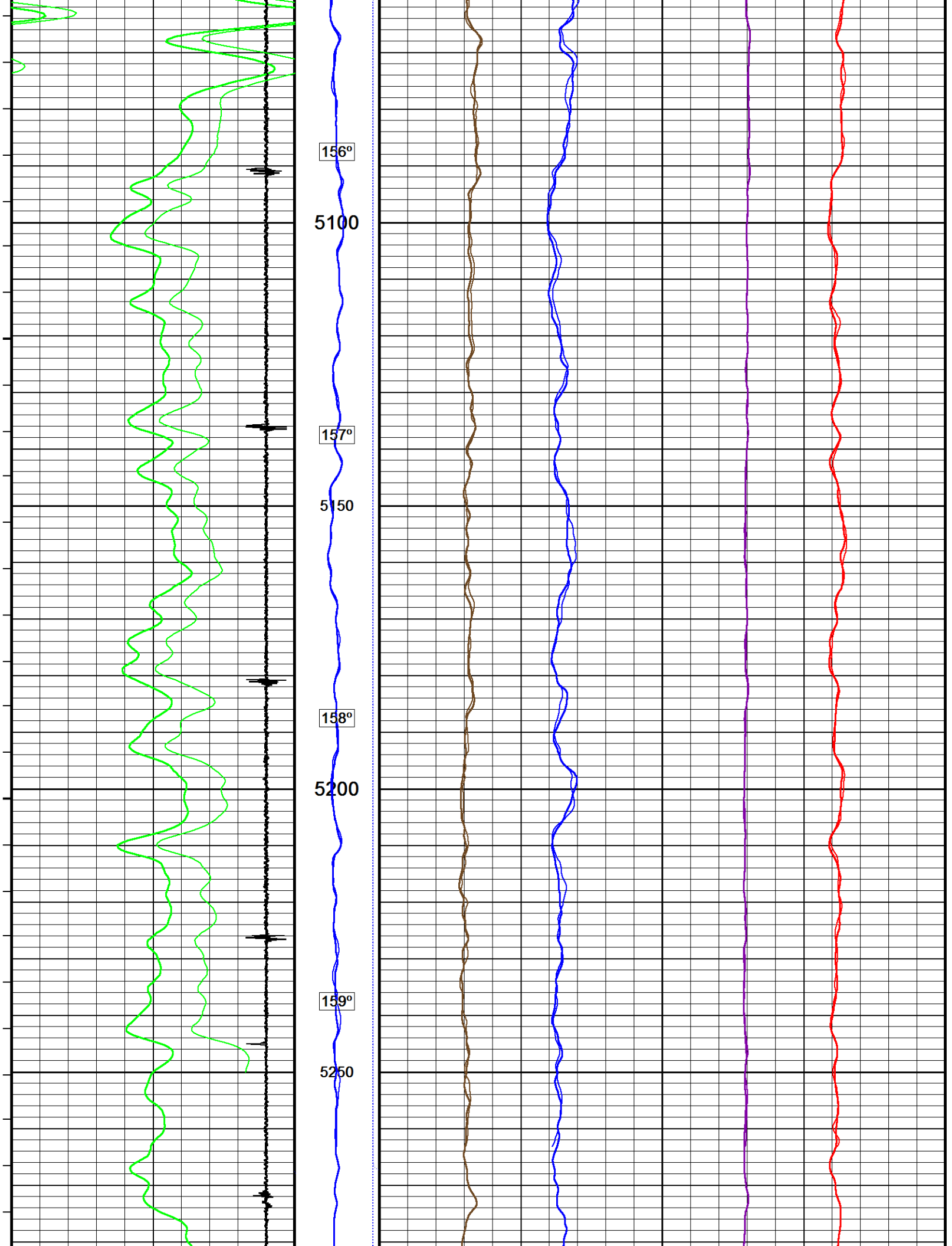
MAIN PASS  
REPEAT PASS

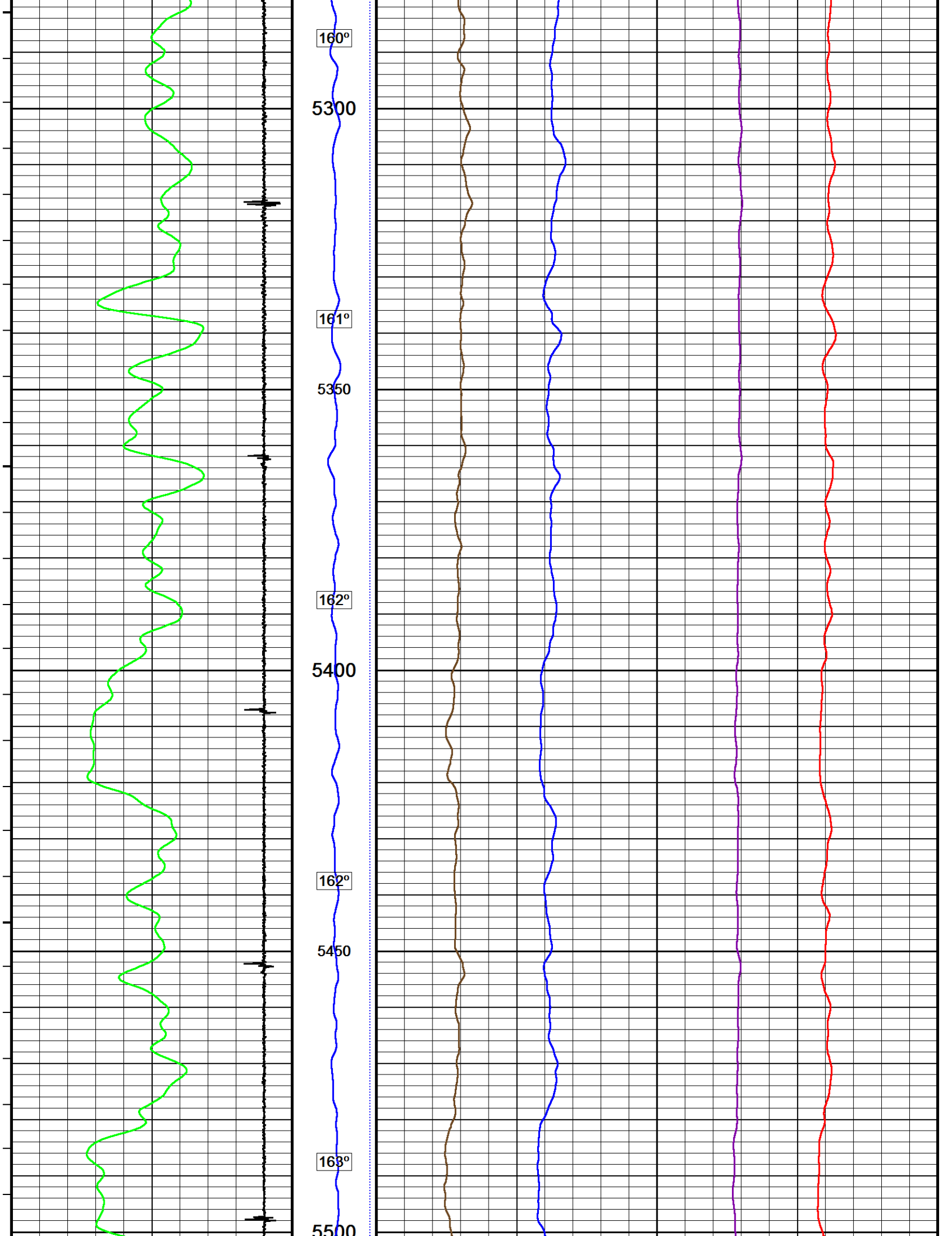
↓

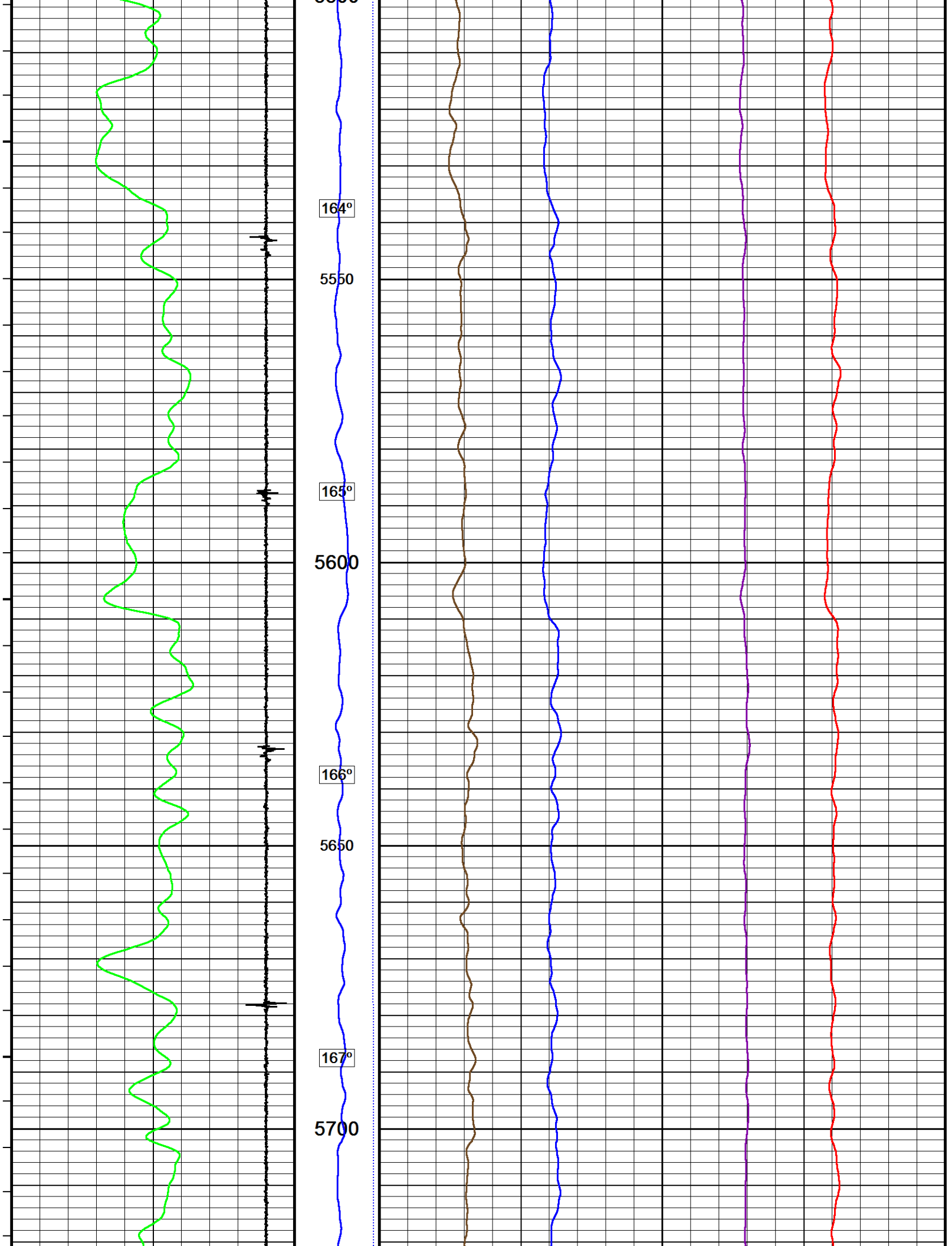
Depth Based Data - Maximum Sampling Increment 12.5cm  
Filename: F:\PUCKETT\_32A\_26\_CRE\PUCKETT\_32A\_26\_CREB\_NVISION\_MAIN.dta  
Filename: F:\PUCKETT\_32A\_26\_CRE\PUCKETT\_32A\_26\_CREB\_NVISION\_REPEAT.dta  
System Versions: Logged with 17.01.6744 Plotted with 17.01.6744

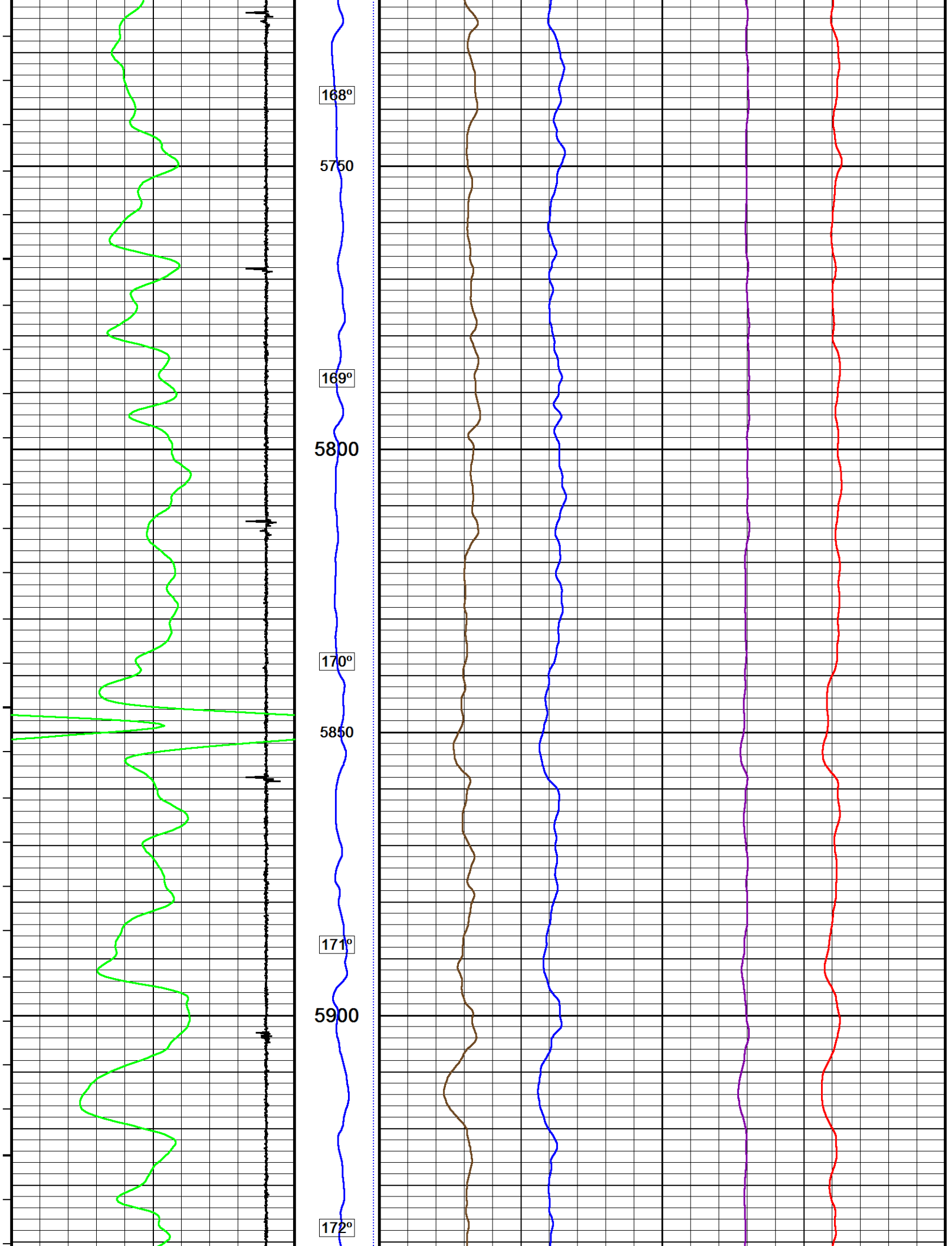
Plotted on 13-MAY-2017 22:26  
Recorded on 13-MAY-2017 12:37  
Recorded on 13-MAY-2017 21:00

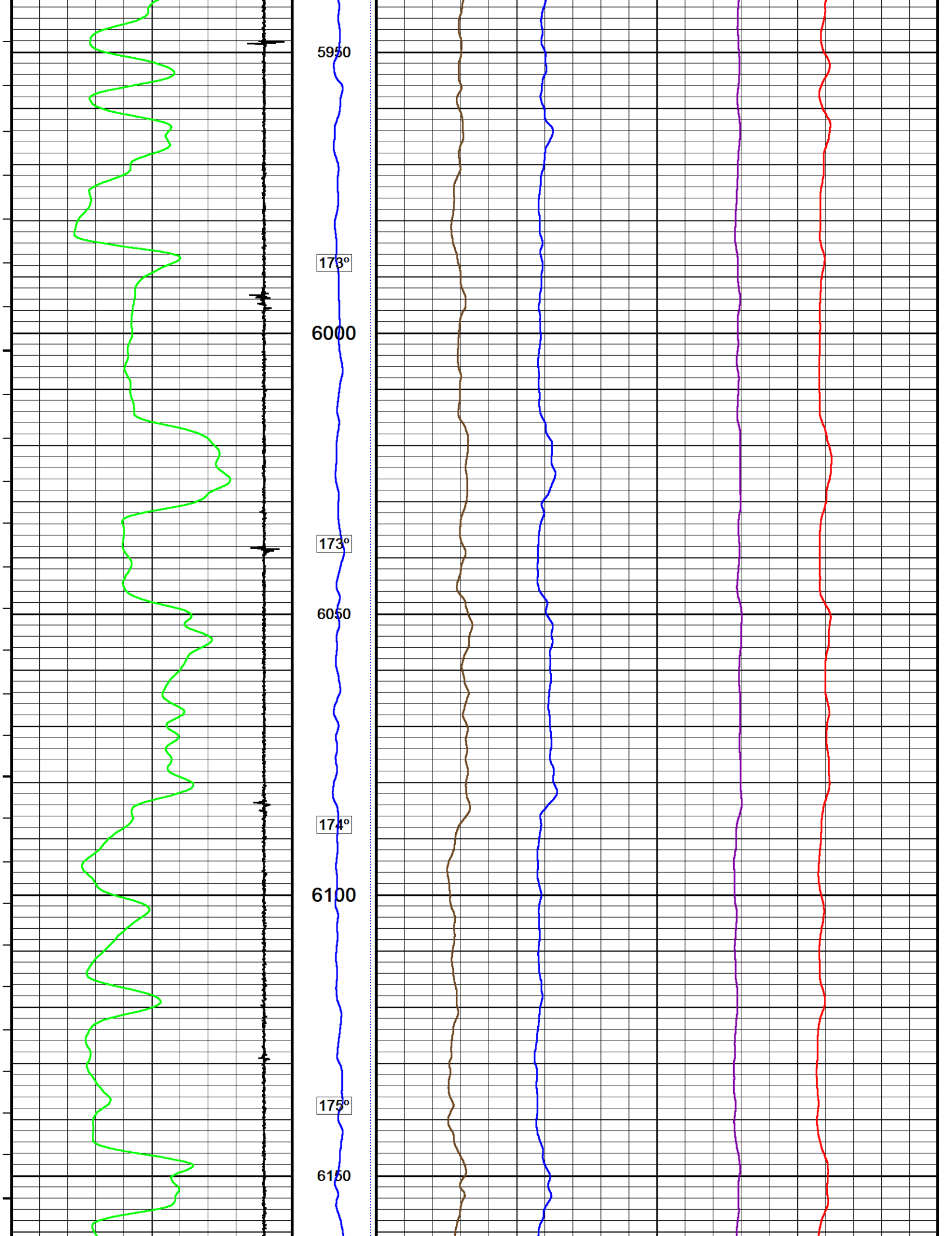


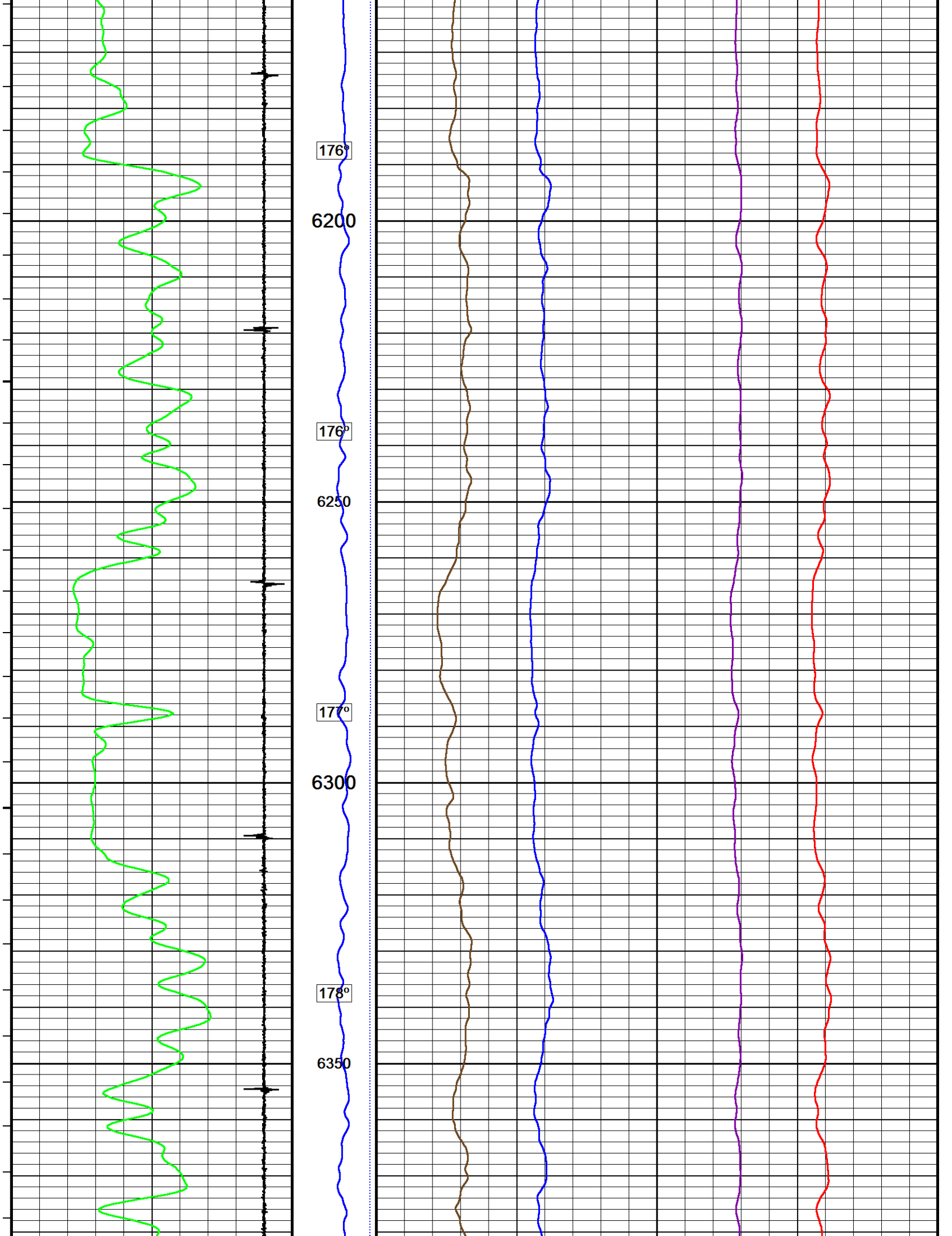


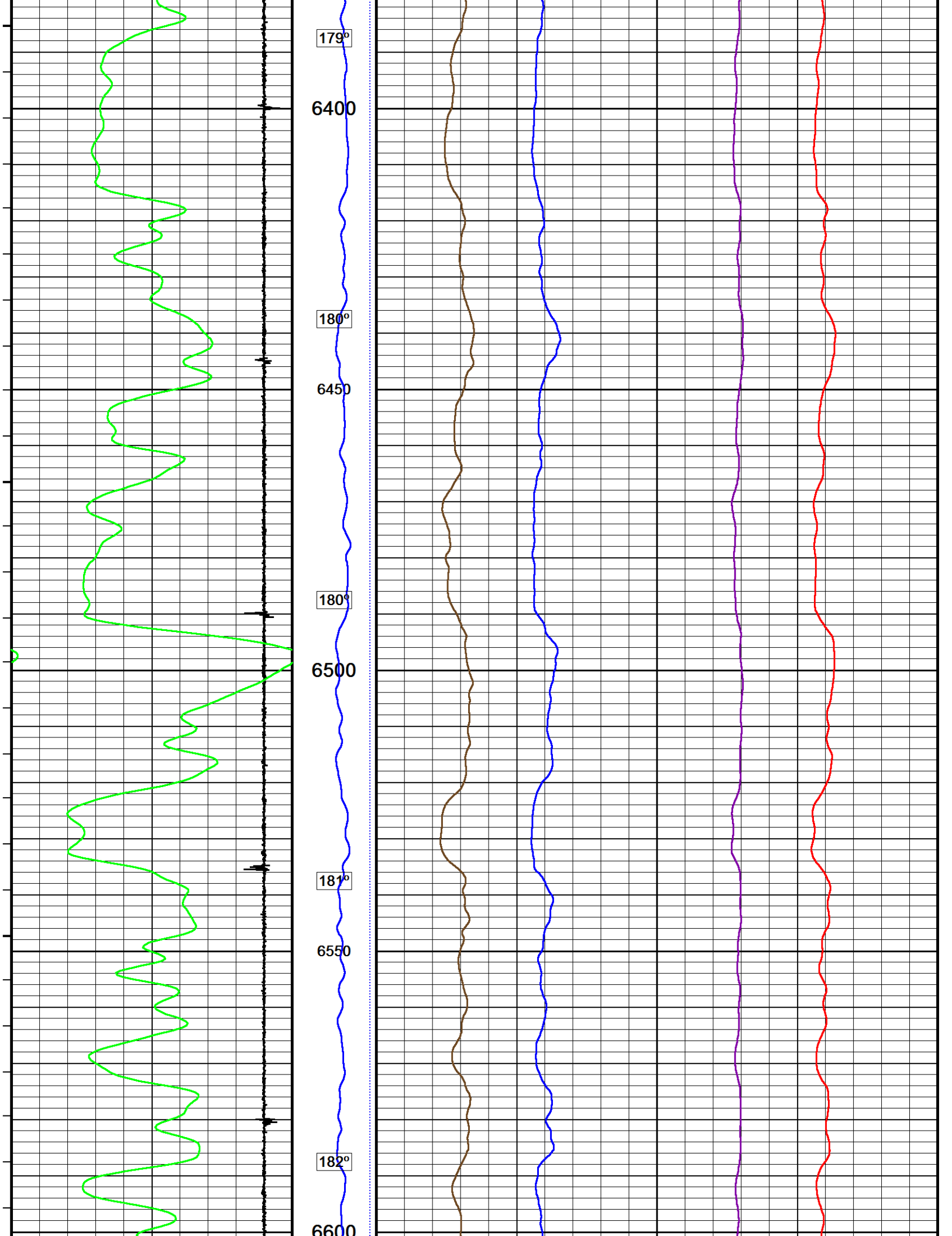


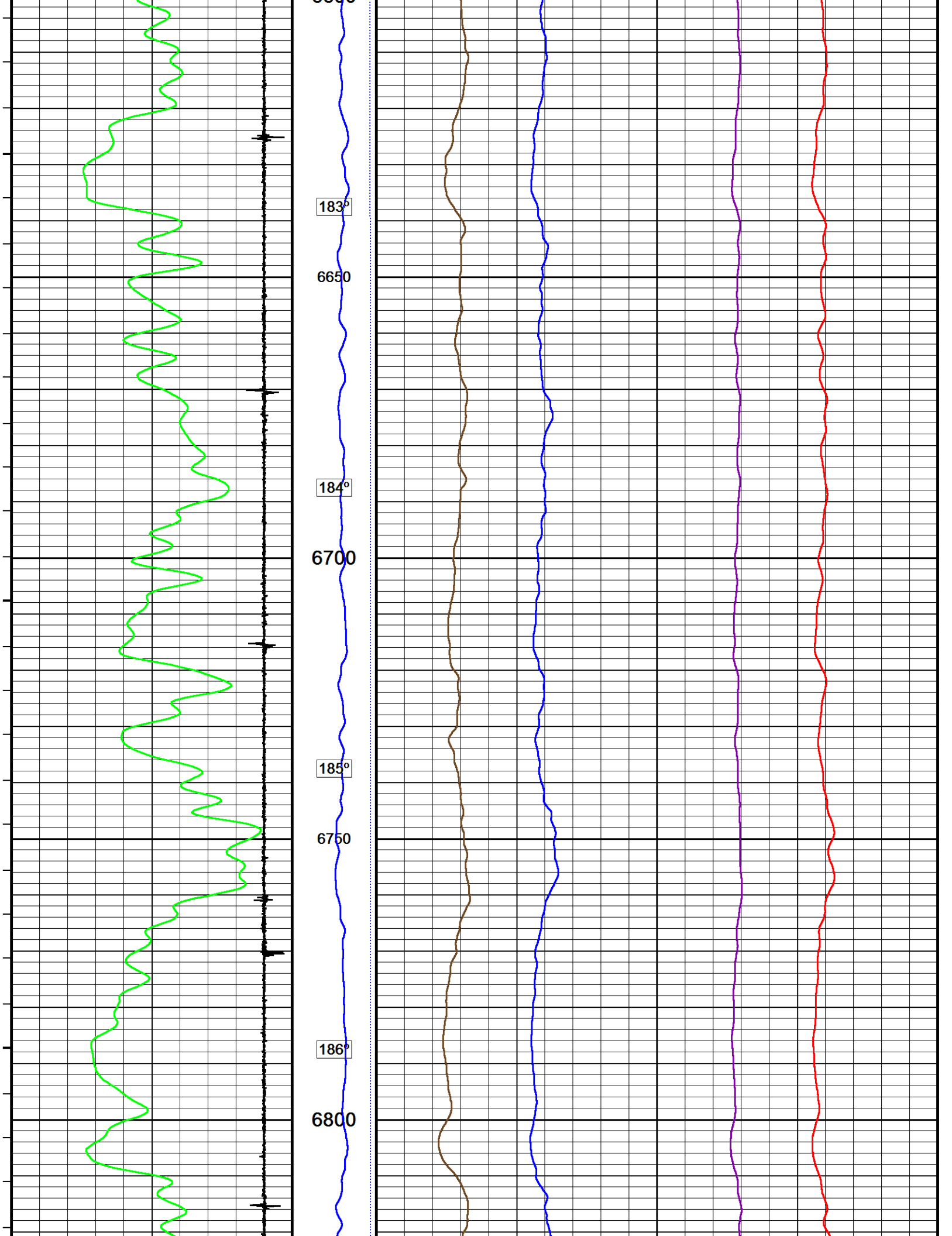


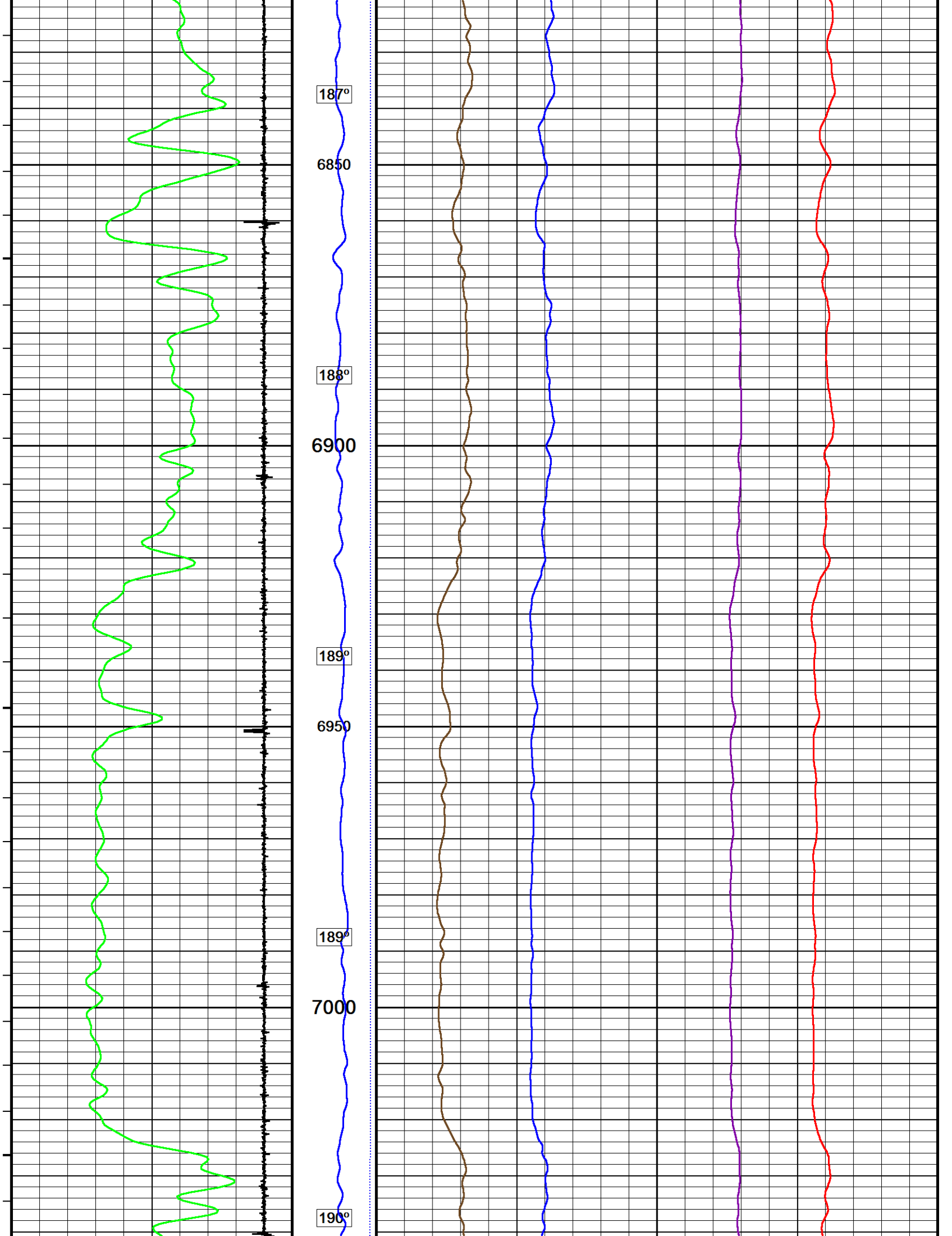


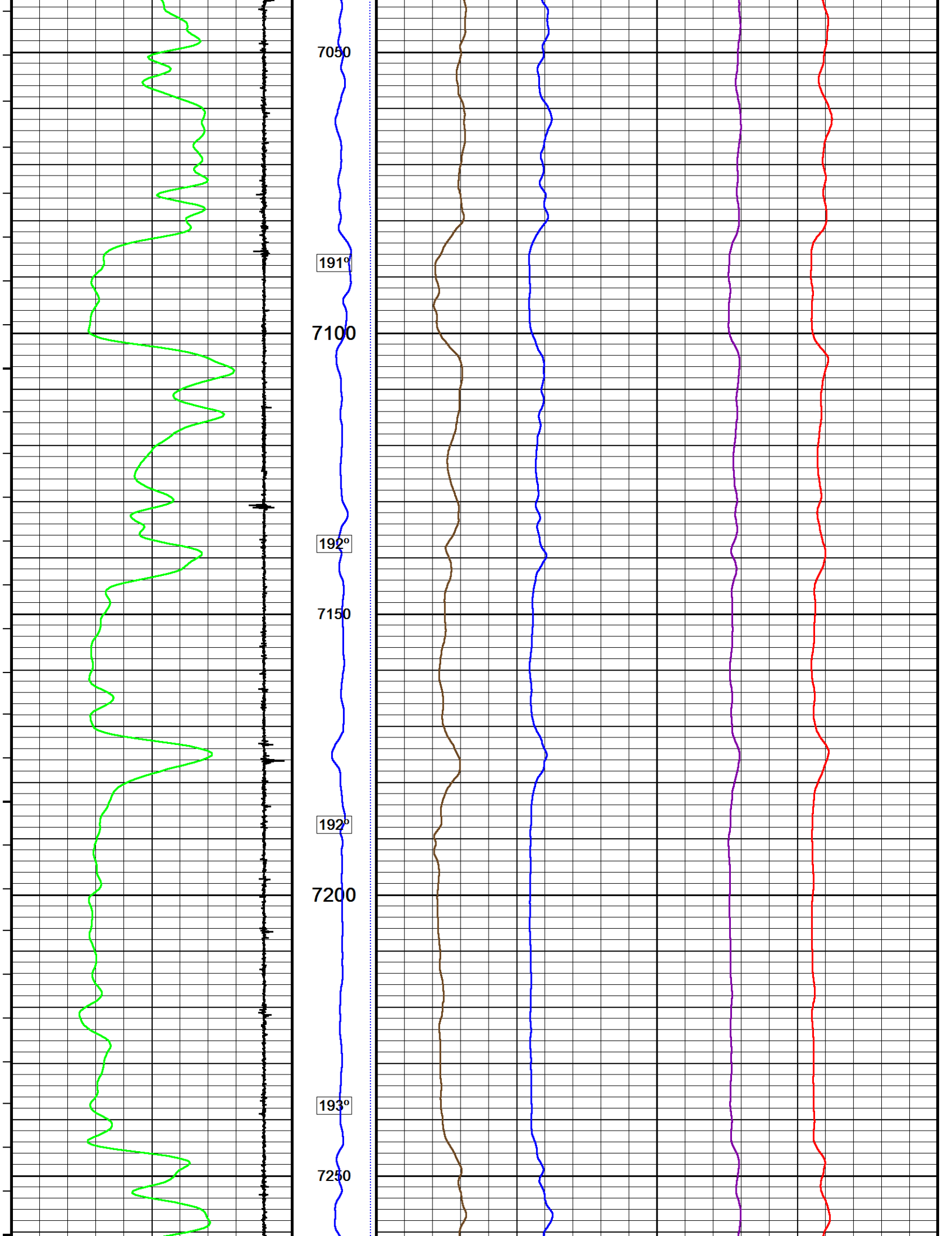


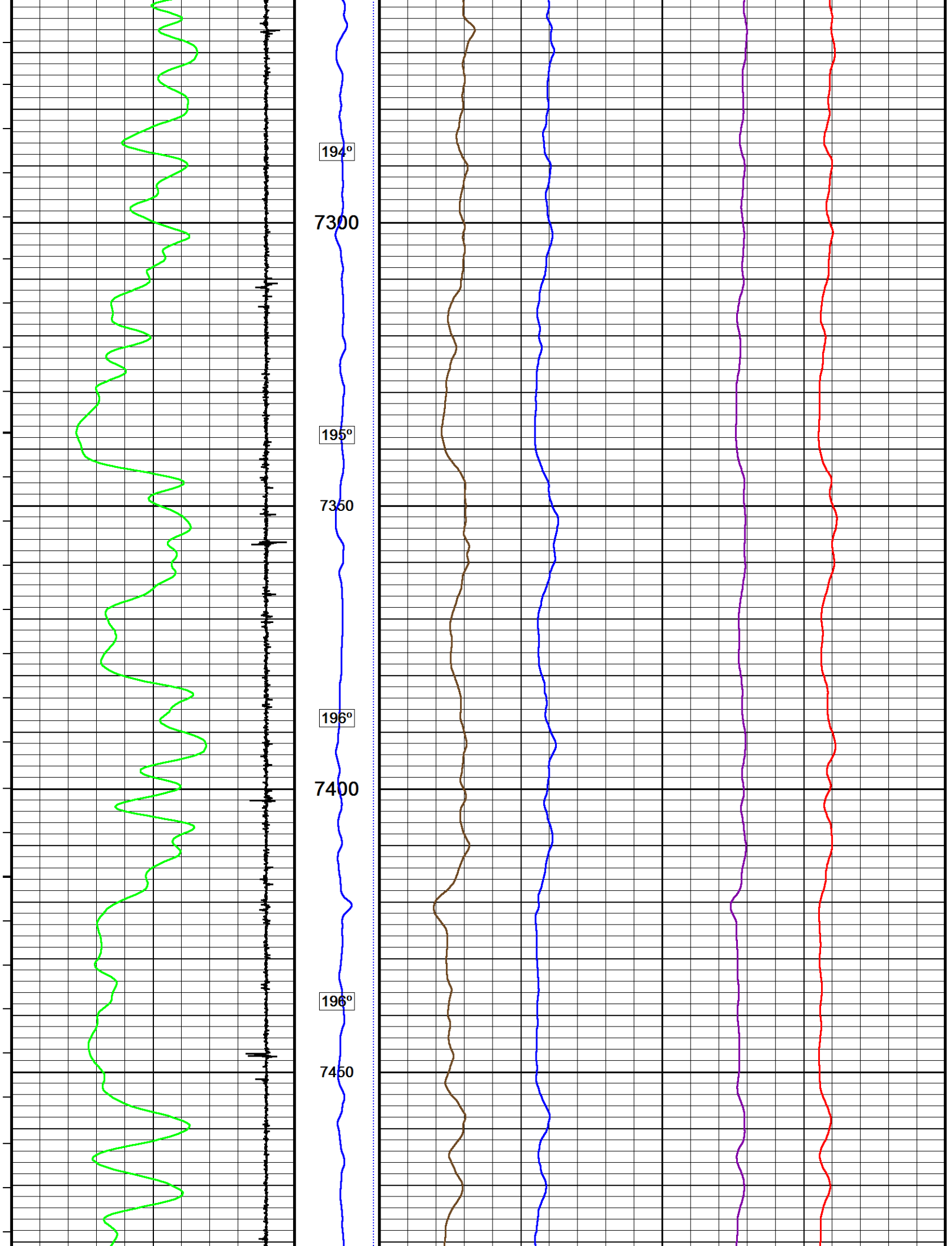


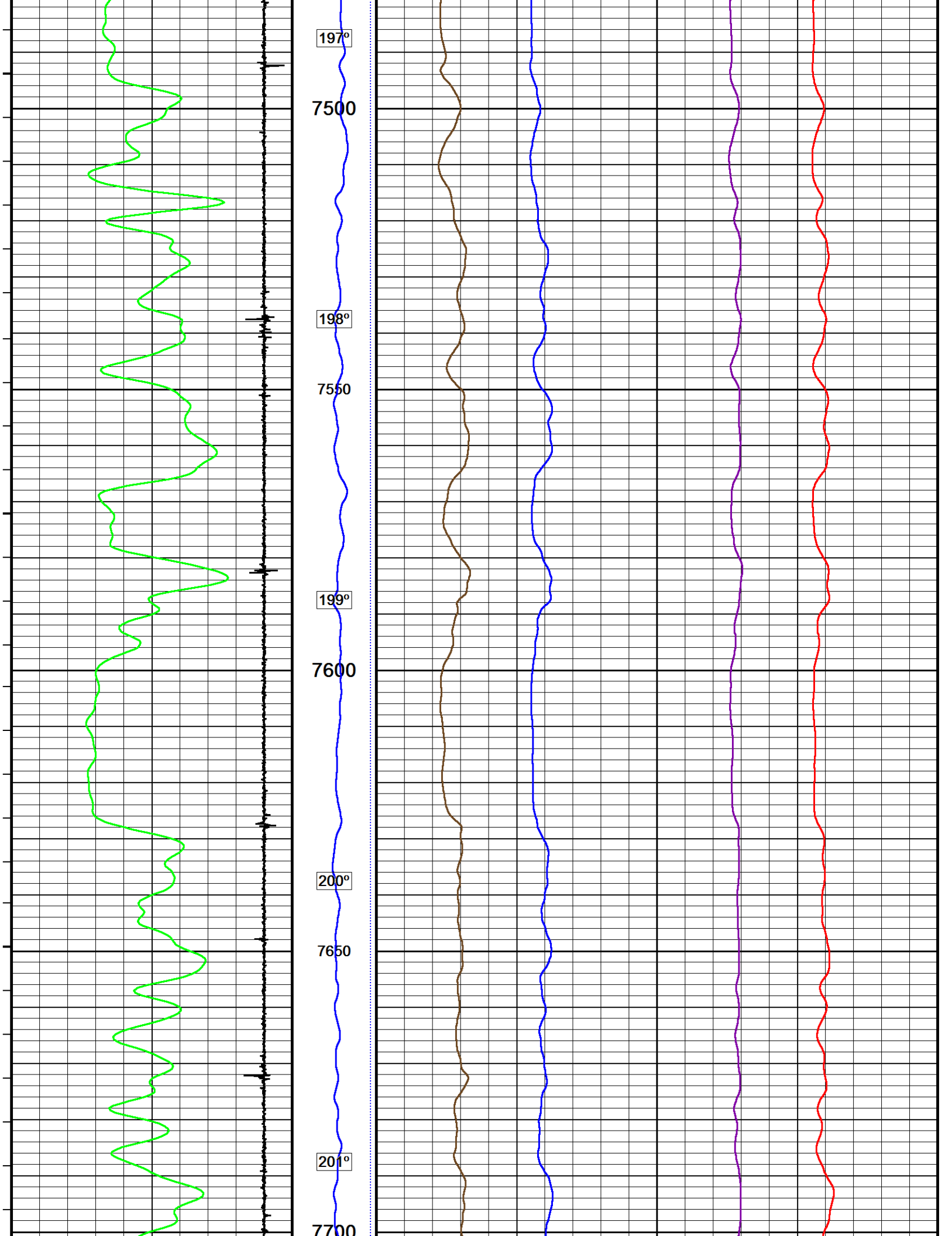


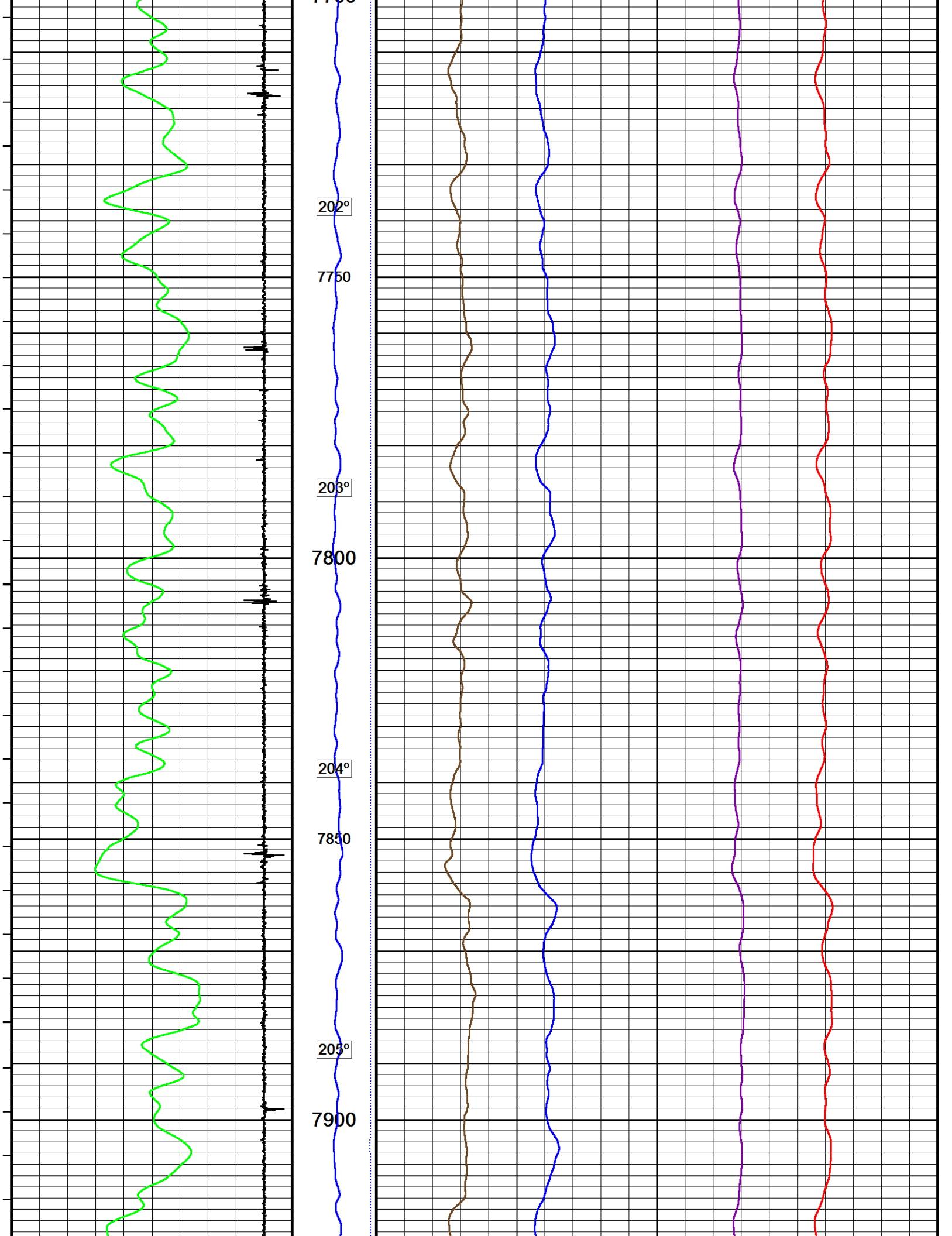


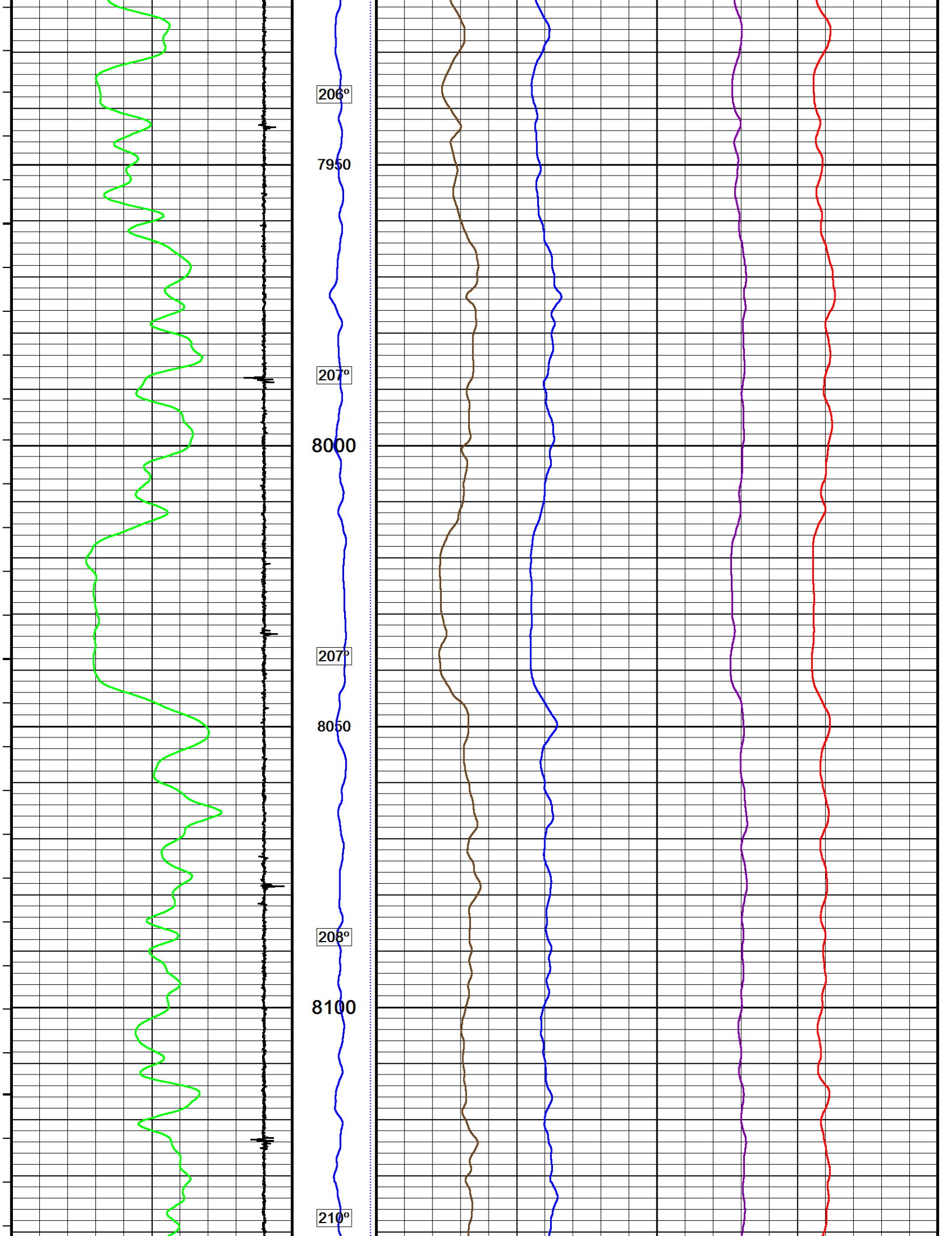


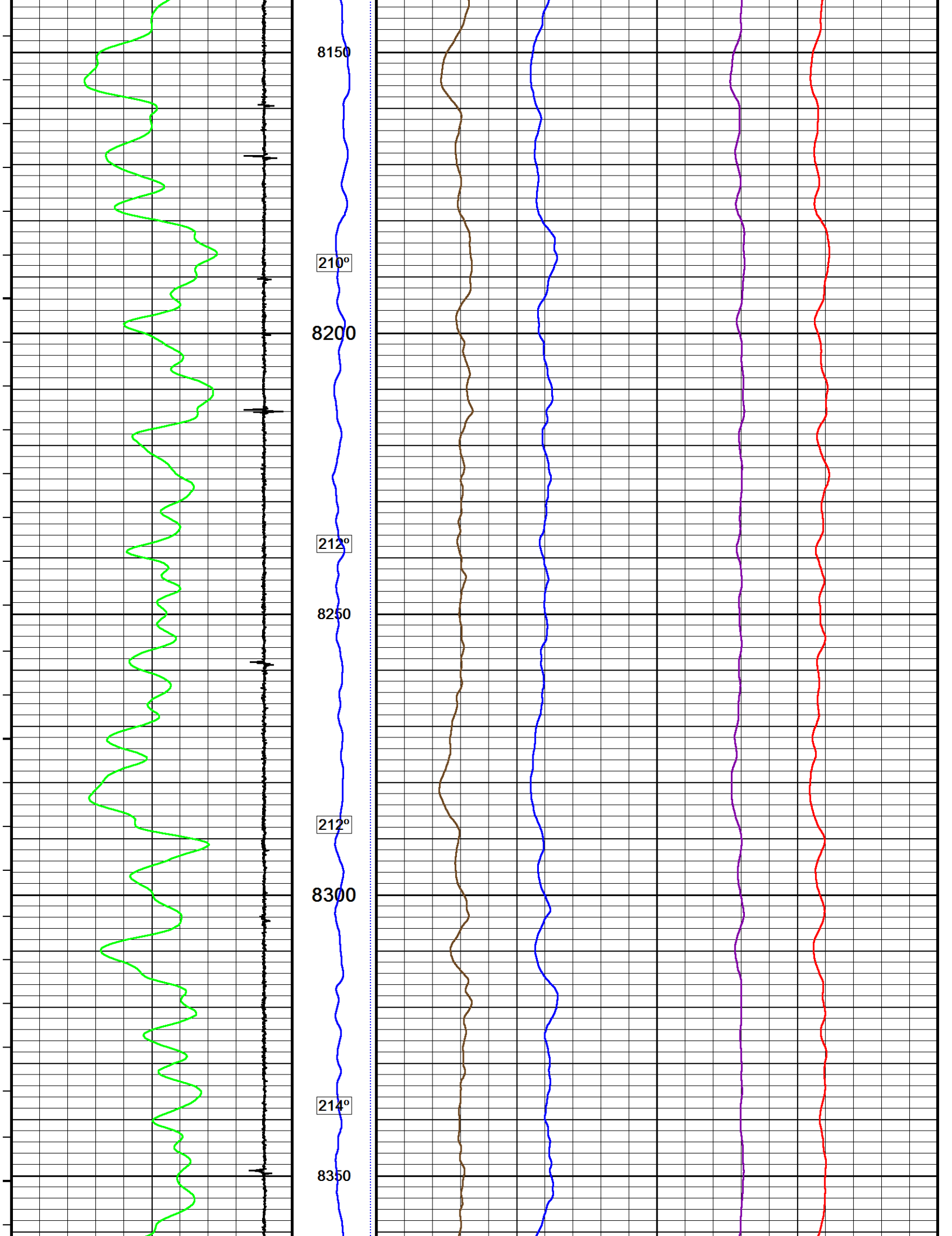


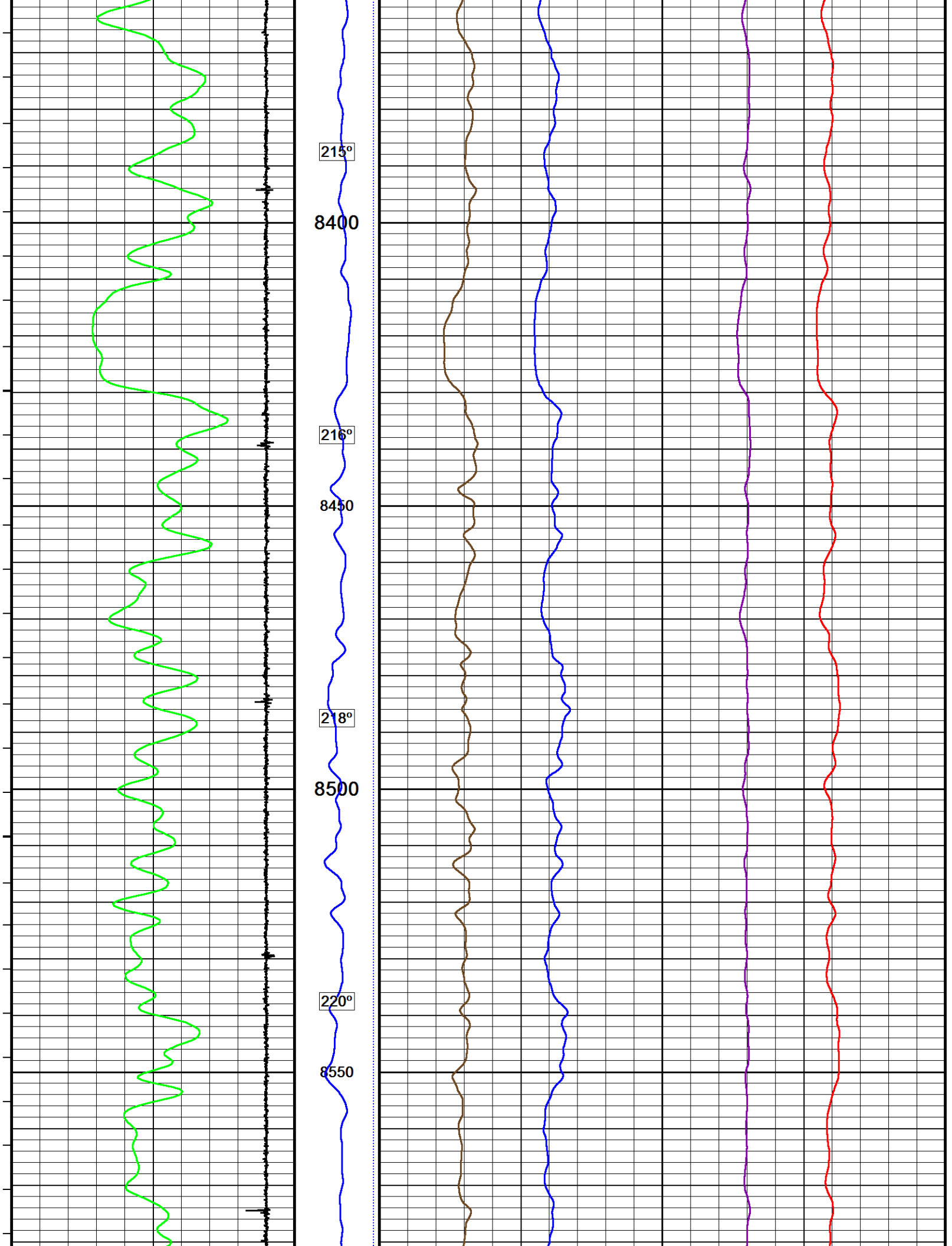


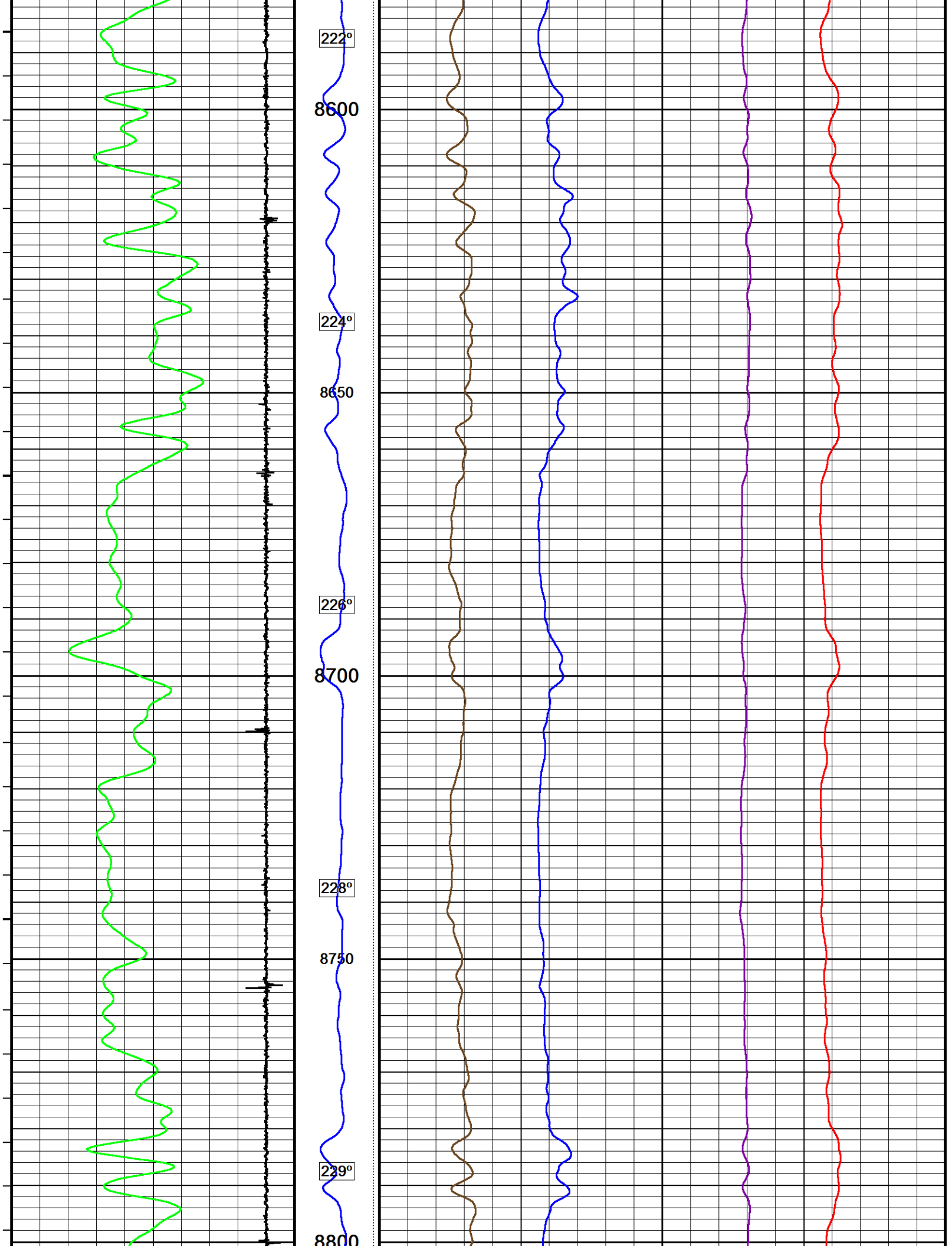


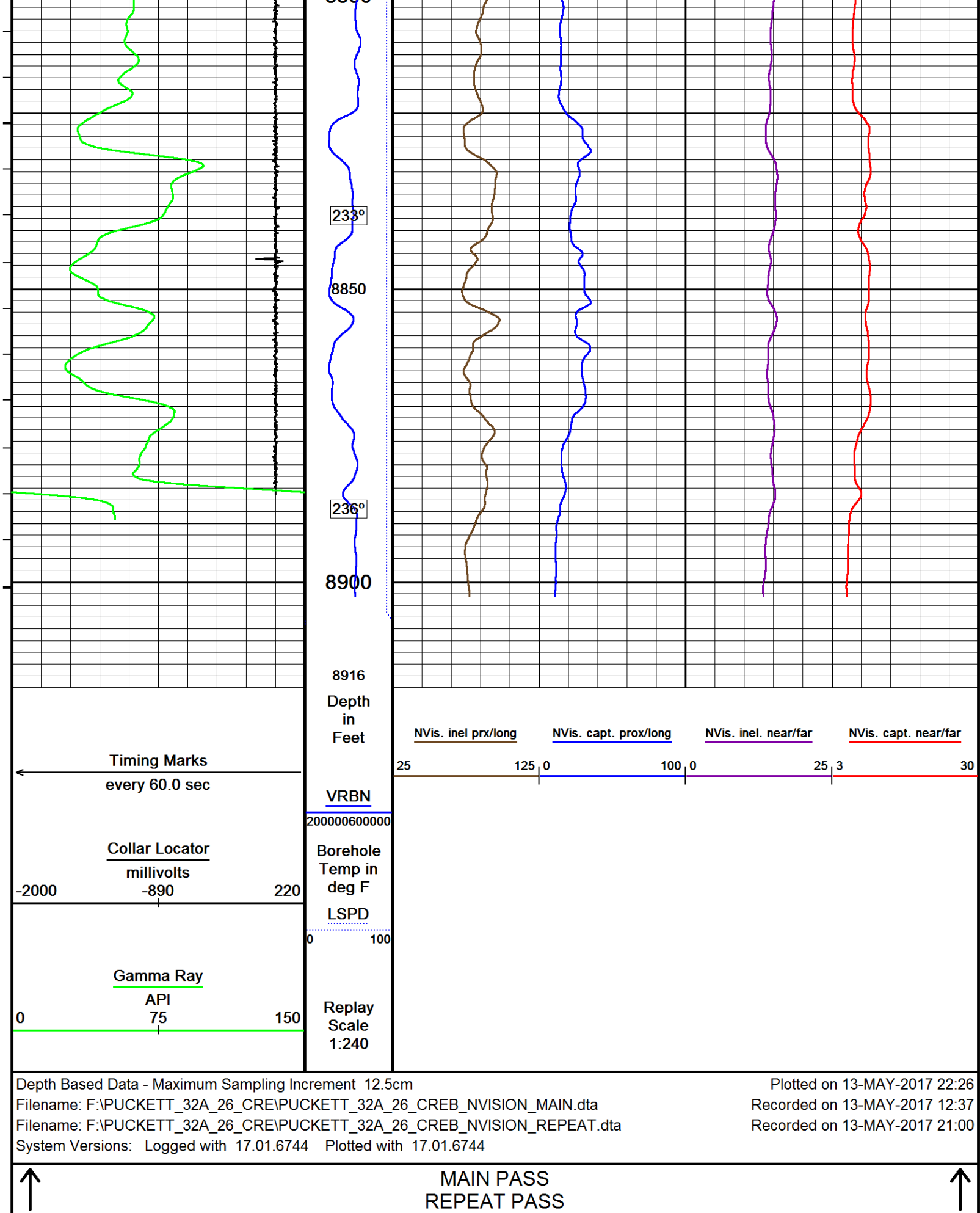


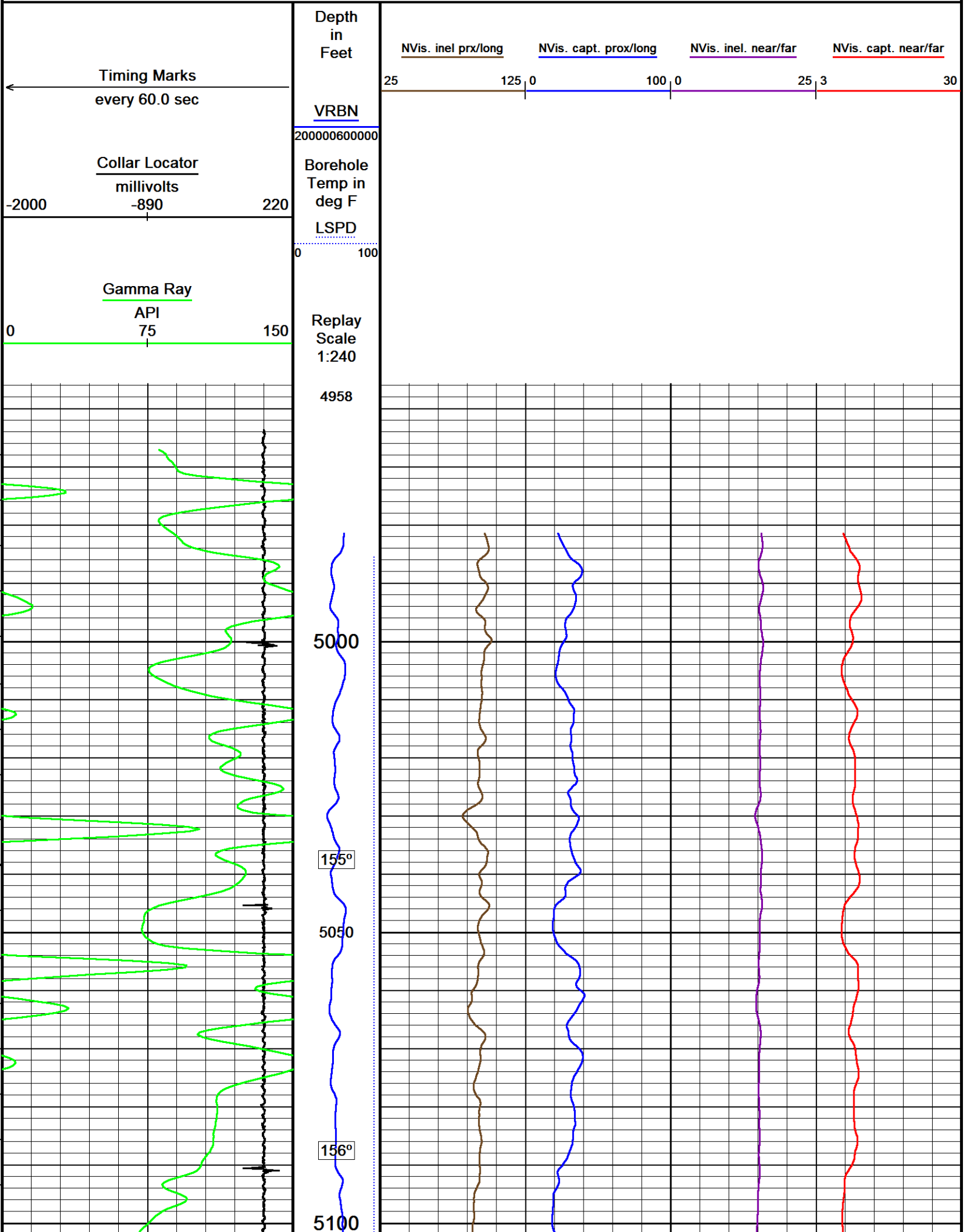


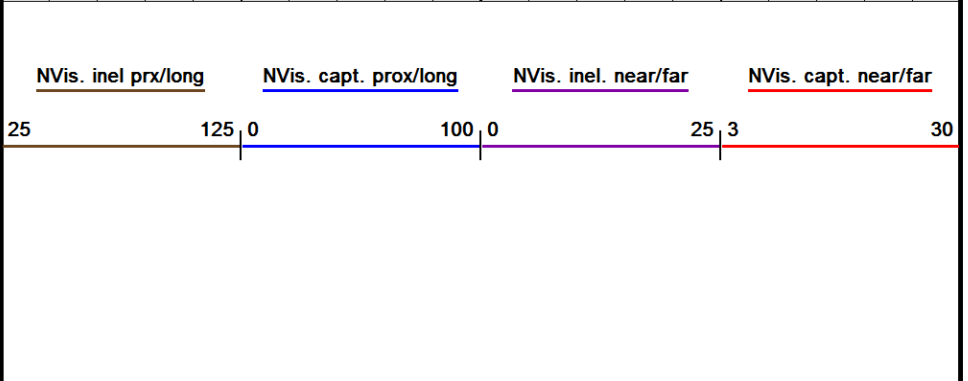
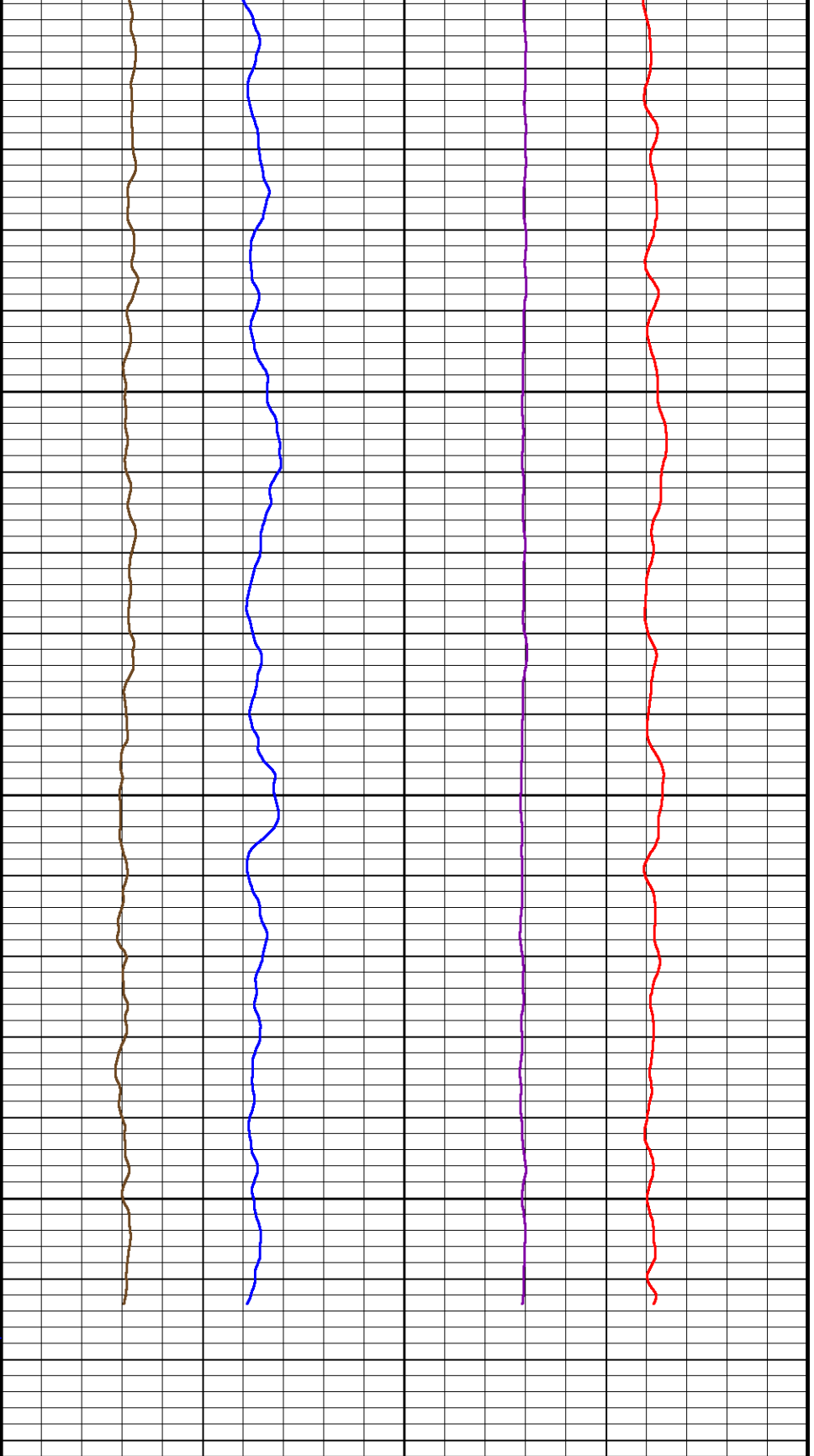
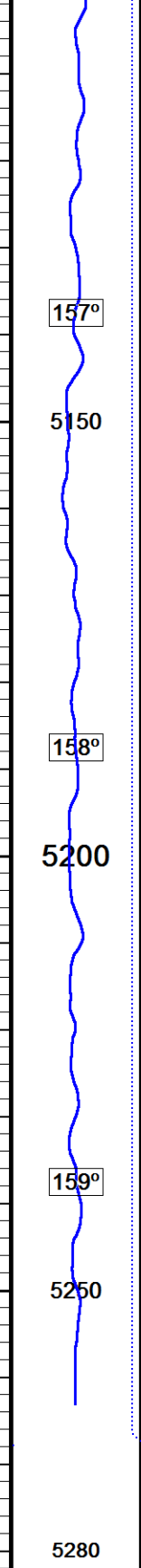


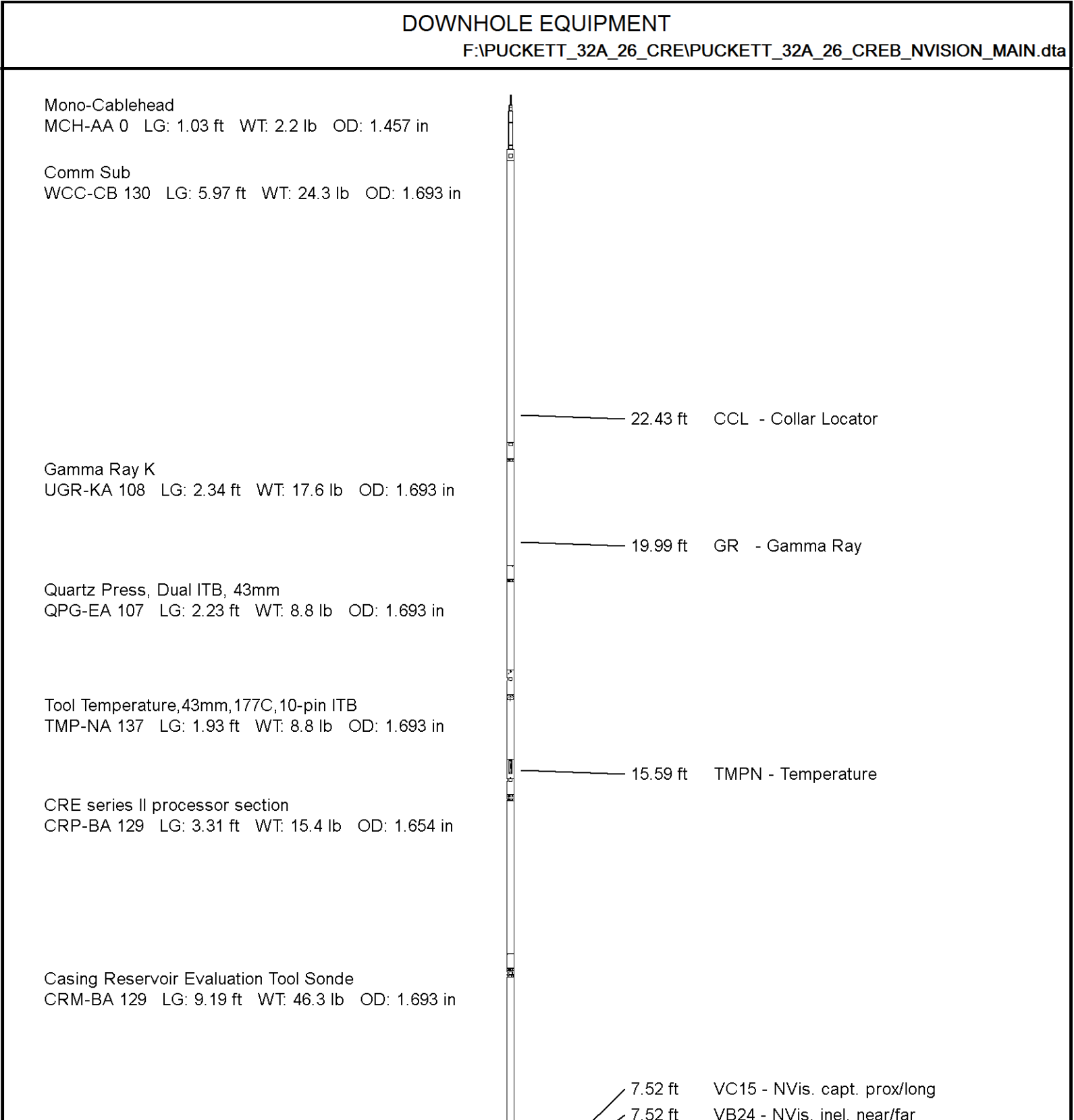
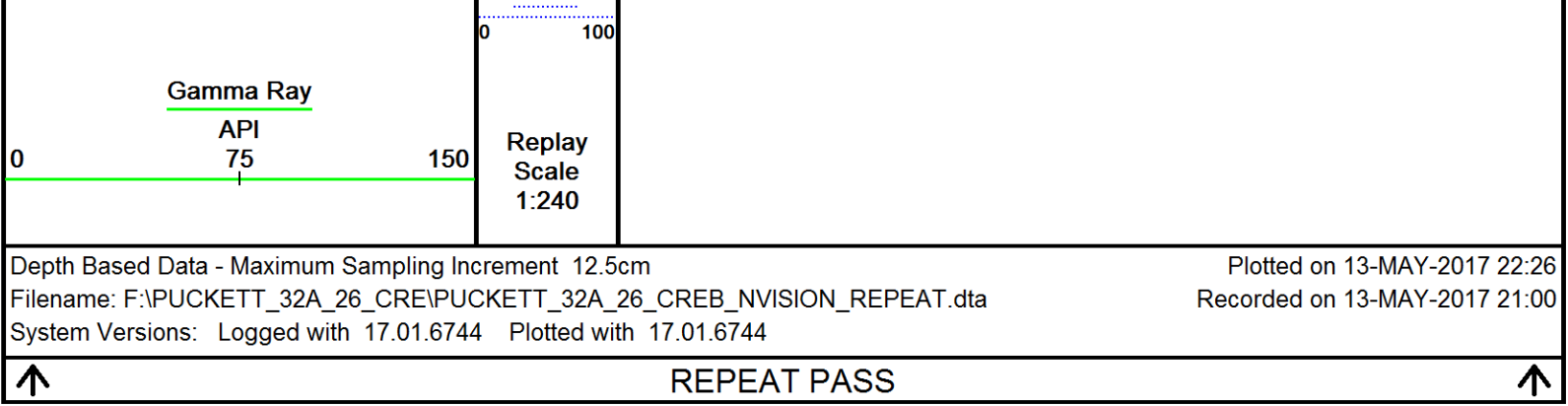












7.52 ft VB15 - NVis. inel prx/long  
 7.52 ft VC24 - NVis. capt. near/far  
 7.52 ft VRBN - VRBN

Gamma Ray K  
 UGR-KA 131 LG: 2.34 ft WT: 17.6 lb OD: 1.693 in

Terminator sub  
 TSH-C 0 LG: 0.27 ft WT: 2.2 lb OD: 1.654 in

Total Length: 28.60 ft Weight: 143.3 lb

Tool Zero (0.00ft from bottom)

All measurements relative to tool zero.

## SHOP AND FIELD CALIBRATIONS

F:\PUCKETT\_32A\_26\_CRE\PUCKETT\_32A\_26\_CREB\_NVISION\_MAIN.dta

UGK Before Survey Cal UGR-KA 108

Field calibration on 26-APR-2017 13:22

### Gamma Ray Before Survey Calibration

Tool Type: UGR-KA  
 Calibrator No: MCGGRCC144

Serial No: 108

Background	Calibrator	Standard	Units
39.7	852.4	486.5	API

Delta Counts Per Sec: 812.7 CPS/API = 1.671

Temperature Tool Shop Survey Calibration TMP-NA 137

### Temperature Tool Shop Survey Calibration

Tool Type: TMP-NA

Serial No: 137

### calibration

Standard	Measured
32 DEGF	36714 Hz
212 DEGF	50849 Hz

UGK Before Survey Cal UGR-KA 131

Field calibration on 26-APR-2017 13:52

Gamma Ray Before Survey Calibration

Tool Type: UGR-KA  
Calibrator No: MCGGRCC144

Serial No: 131

Background	Calibrator	Standard	Units
27.9	848.9	486.5	API

Delta Counts Per Sec: 821.0                      CPS/API = 1.688

COMPANY	CAERUS OIL & GAS
WELL	PUCKETT 32A-26
FIELD	GRAND VALLEY
PROVINCE/COUNTY	GARFIELD
COUNTRY/STATE	USA / COLORADO

Elevation Kelly Bushing	8426	feet	Bottom Log Interval	8913.00	feet
Elevation Drill Floor	8426	feet	Depth Driller	9032.00	feet
Elevation Ground Level	8396	feet	Depth Logger	8913.00	feet



**Weatherford®**

RAPTOR NVISION LOG