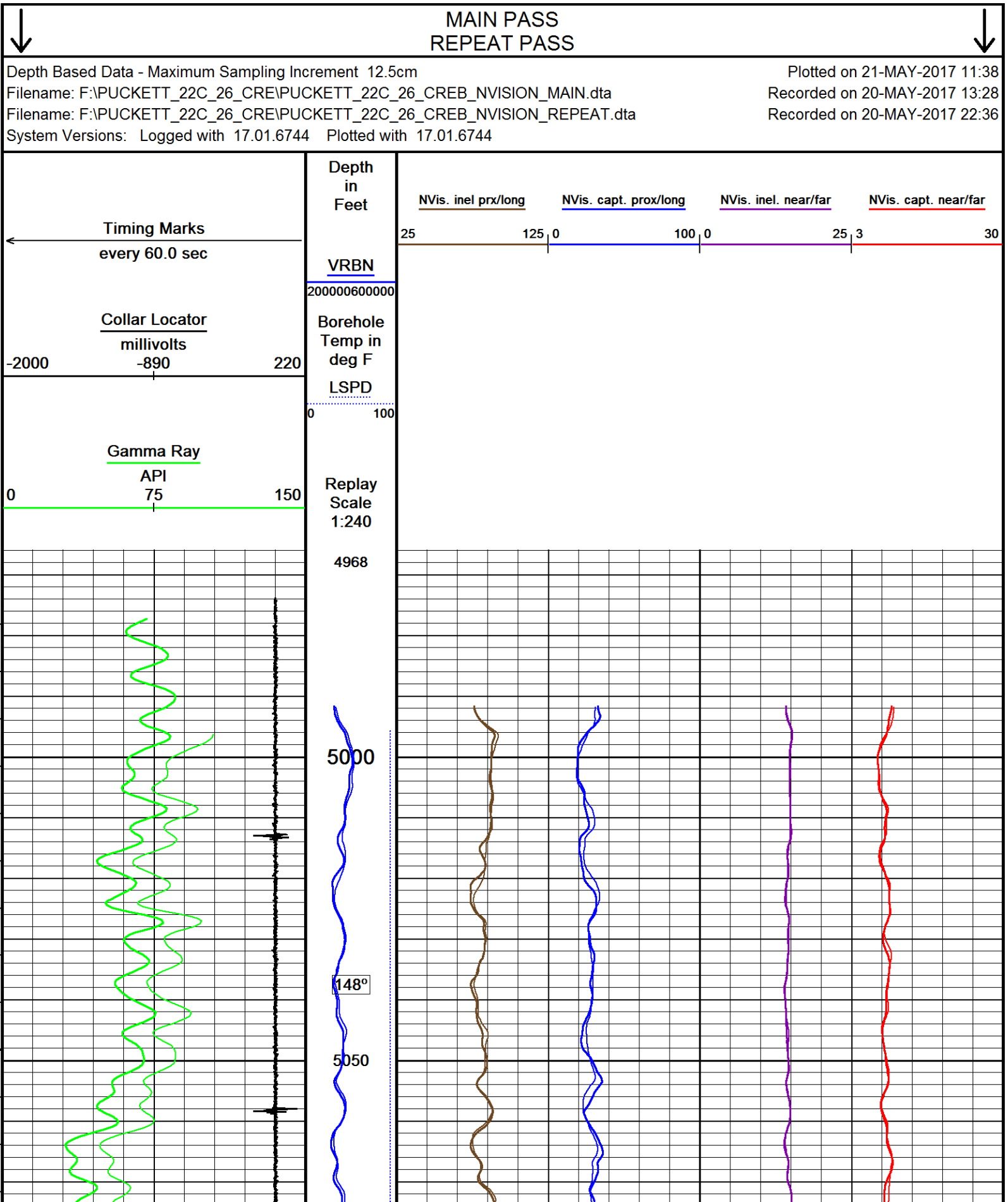
 Weatherford®				RAPTOR NVISION LOG							
COMPANY WELL FIELD PROVINCE/COUNTY COUNTRY/STATE LOCATION				CAERUS OIL & GAS PUCKETT 22C-26 GRAND VALLEY GARFIELD USA / COLORADO							
SEC 26		TWP 06S		RGE 97W		Other Services SBT					
Latitude		Longitude		Permanent Datum GROUND LEVEL, Elevation 8396 feet Log Measured From KB, 30.00 feet above Permanent Datum Drilling Measured From KB							
API Number											
Date				20-MAY-2017		PERFORATION RECORD					
Run Number		ONE		Shot		Number		Depth From		Depth To	
Service Order		182577333		Density		of Shots		feet		feet	
Type Log		CREB									
Depth Driller		9099.00									
Depth Logger		9070.00									
Top Log Interval		5000.00									
Bottom Log Interval		9070.00									
Hole Fluid Type		WATER									
Hole Fluid Level		0.00									
Restriction ID		3.875									
Max Recorded Temp		236.00									
Well Head Pressure		0.00									
Well Head Equipment		N/A									
Time Well Ready		ROA									
Time Logger Bottom		1300									
Unit		14333									
Equipment Name		WSS-E									
Base		CASPER									
Recorded By		P. MAZUR									
Witnessed By		NOT WITNESSED									

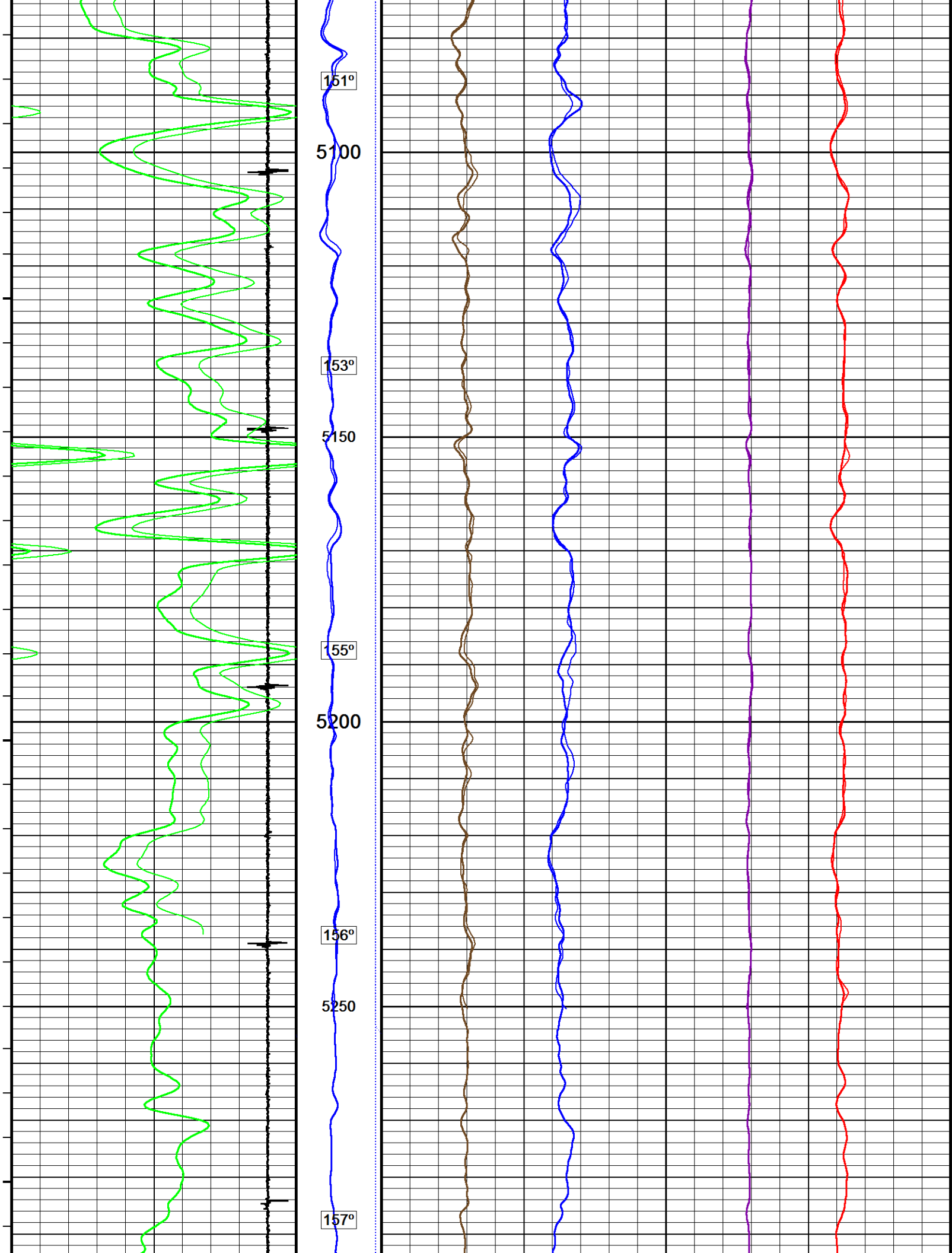
CASING / TUBING RECORD						
Type	Grade	TypeJoint	Size inches	Depth From feet	Shoe Depth feet	Weight pounds/ft
			4.500	0.00	8976.00	11.60

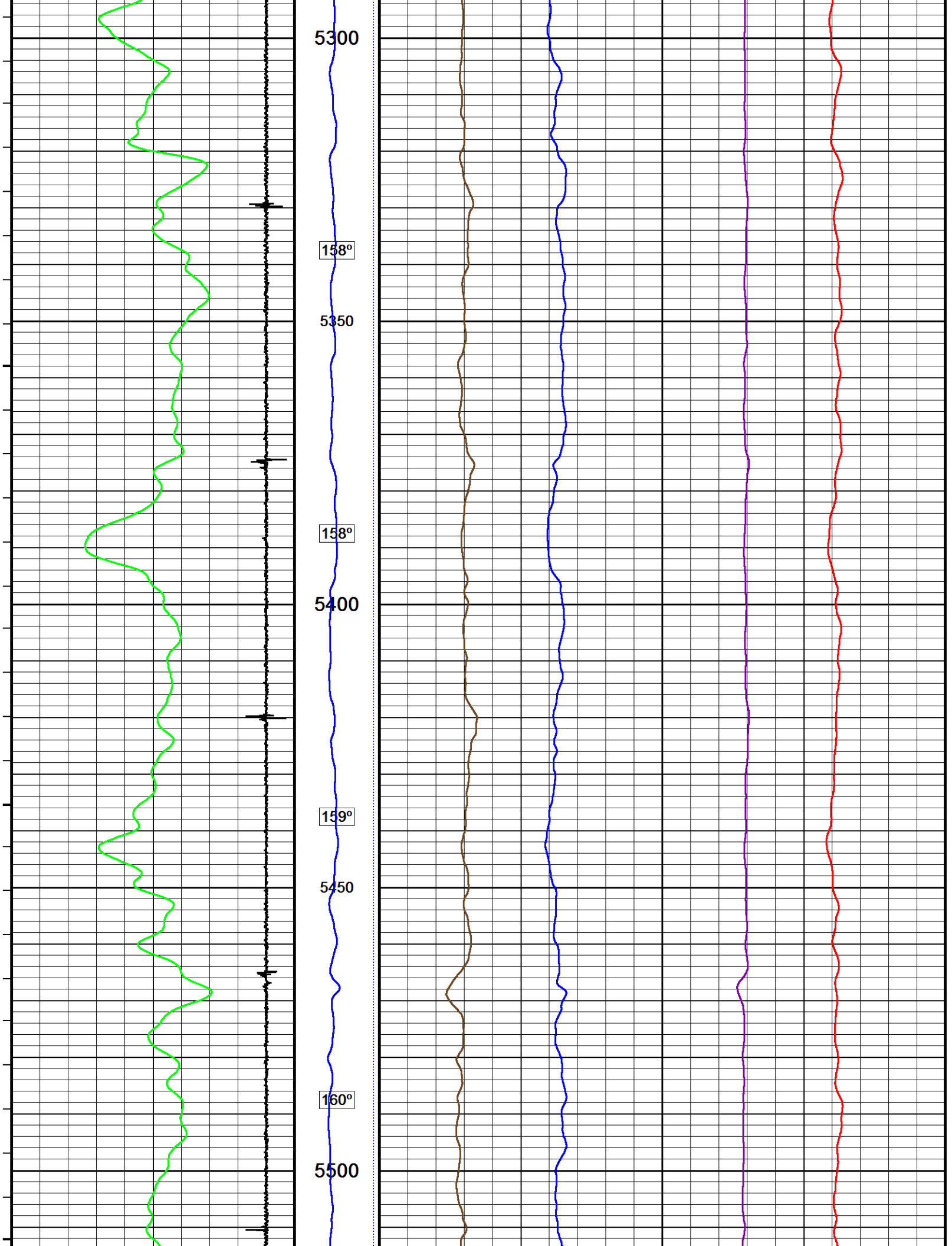
REMARKS
SOFTWARE VERSION 17.01.6744 - DEVELOPMENT BUILD VERSION
ALL DEPTH CONTROL PROCEDURES FOR SUBSEQUENT RUN IN HOLE WERE FOLLOWED. LOG RUN FROM 30' K.B.
SURFACE SYSTEM USED: WCM-D 307
TOOLS RUN: WCCC, UGRK, QPGE, TMPN, CRPB, CRMB, UGRK WERE RAN IN COMBINATION
GAMMA RAY COUNTS ON SUBSEQUENT PASSES ARE AFFECTED BY RESIDUAL NEUTRON ACTIVATION CAUSED BY THE PREVIOUS PASS
BOTTOM HOLE TEMPERATURE WAS DEG. 236F

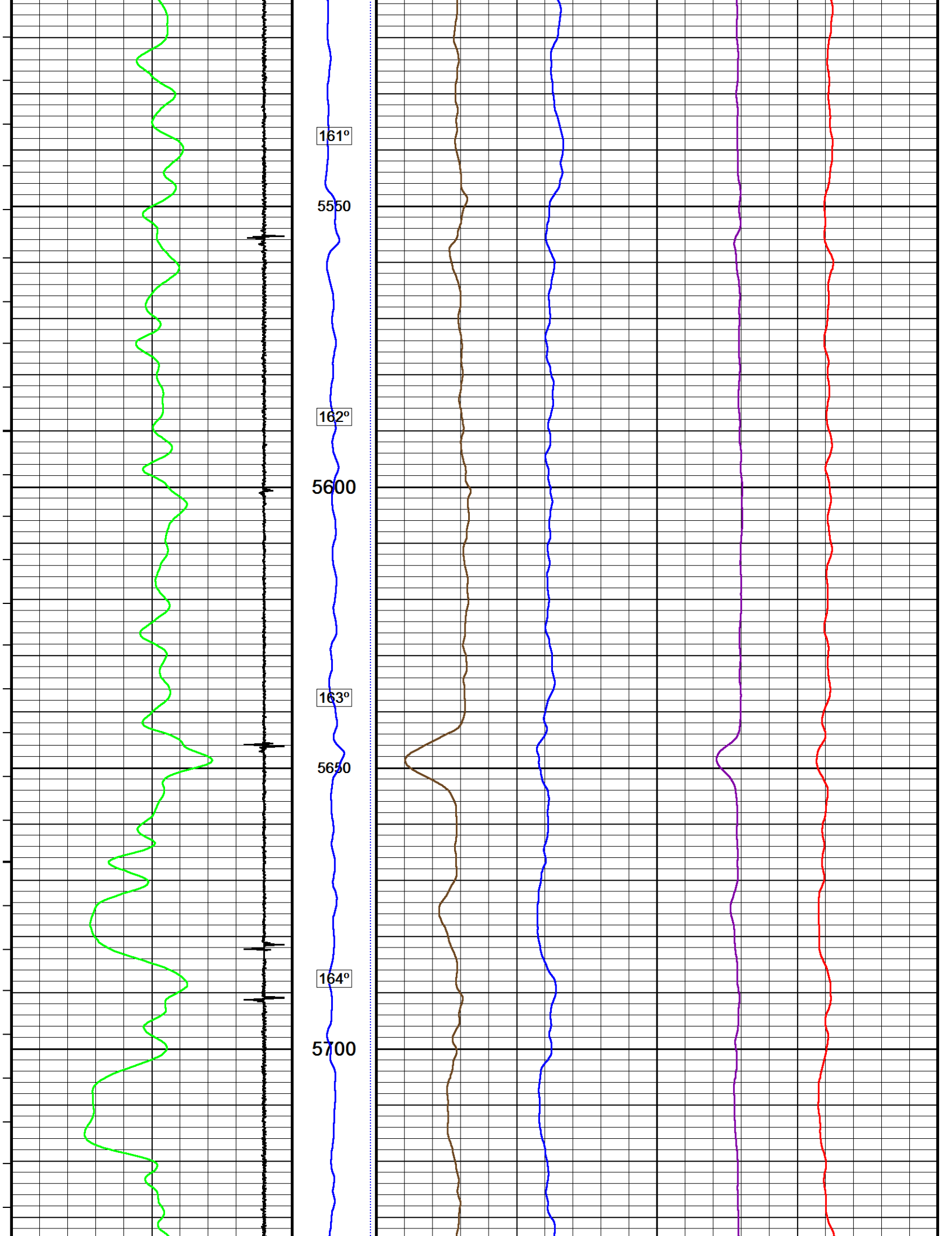
In interpreting, communicating or providing information and/or making recommendations, either written or oral, as to logs or test or other data, type or amount of material, or Work or other service to be furnished, or manner of performance, or in predicting results to be obtained, the Contractor will give the Company the benefit of the Contractor's best judgment based on its experience and will perform all such Work in a good and workmanlike manner. Any interpretation of test or other data, and any recommendation or reservoir description based upon such interpretations, are opinions based upon inferences from measurements and empirical relationships and assumptions, which inferences and assumptions are not infallible, and with respect to which professional engineers and analysts may differ. ACCORDINGLY ANY INTERPRETATION OR RECOMMENDATION RESULTING FROM THE SERVICES WILL BE AT THE SOLE RISK OF THE COMPANY, AND THE CONTRACTOR CANNOT AND DOES NOT WARRANT THE ACCURACY, CORRECTNESS OR COMPLETENESS OF ANY SUCH

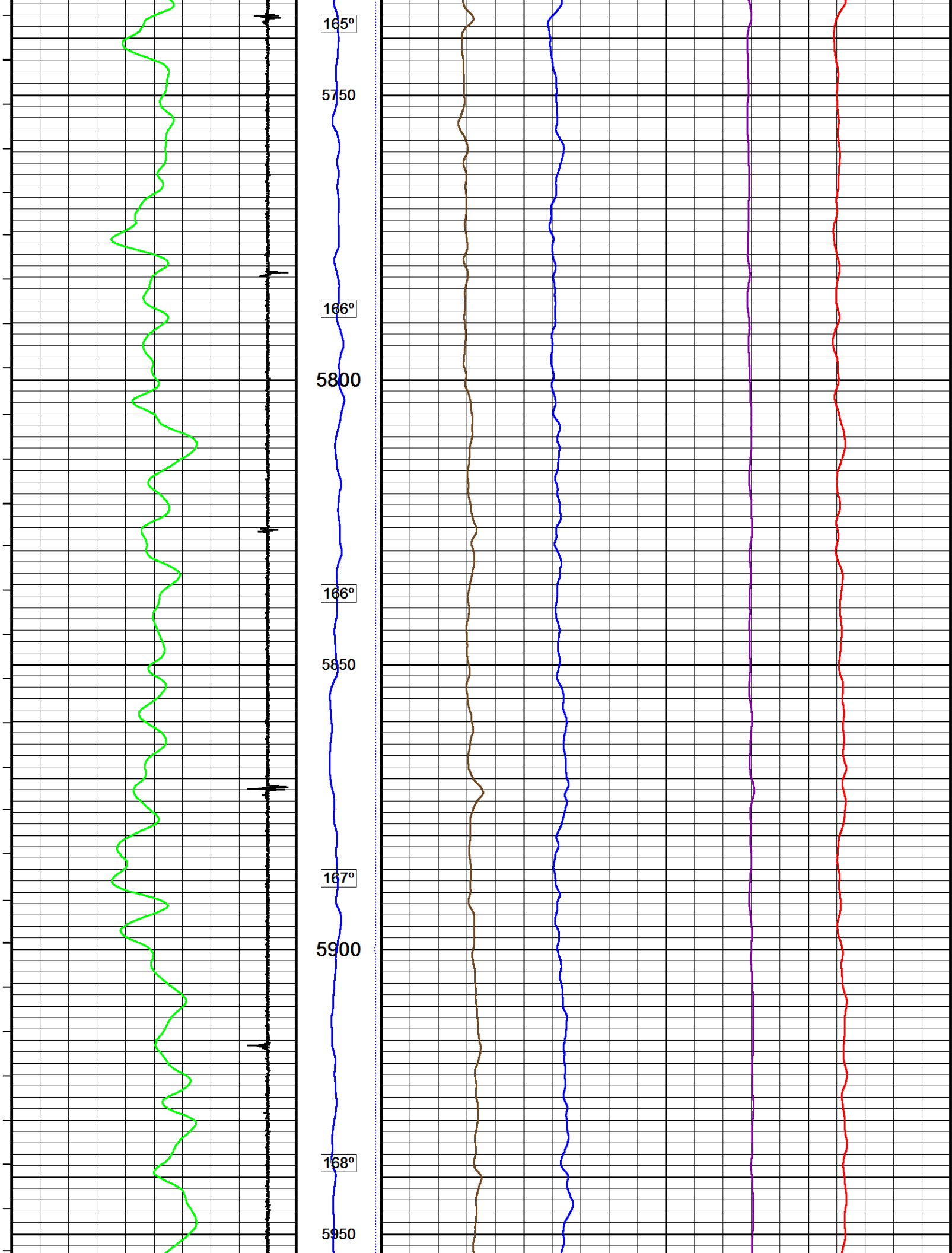
INTERPRETATION OR RECOMMENDATION, WHICH INTERPRETATIONS AND RECOMMENDATIONS SHOULD NOT, THEREFORE, UNDER ANY CIRCUMSTANCES BE RELIED UPON AS THE SOLE OR MAIN BASIS FOR ANY DRILLING, COMPLETION, WELL TREATMENT, PRODUCTION OR FINANCIAL DECISION, OR ANY PROCEDURE INVOLVING ANY RISK TO THE SAFETY OF ANY DRILLING ACTIVITY, DRILLING RIG OR ITS CREW OR ANY OTHER INDIVIDUAL. THE COMPANY HAS FULL RESPONSIBILITY FOR ALL DECISIONS CONCERNING THE SERVICES.

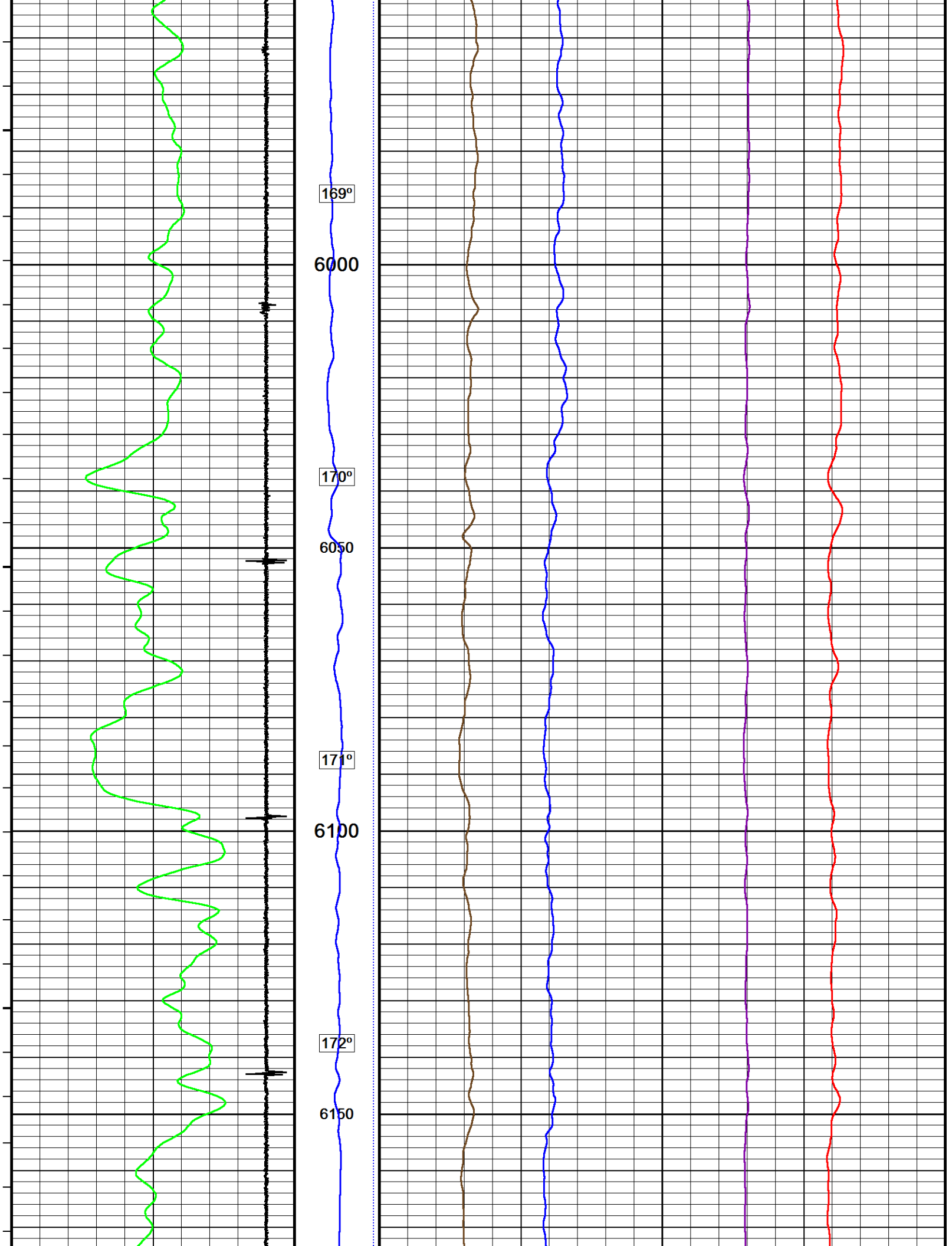


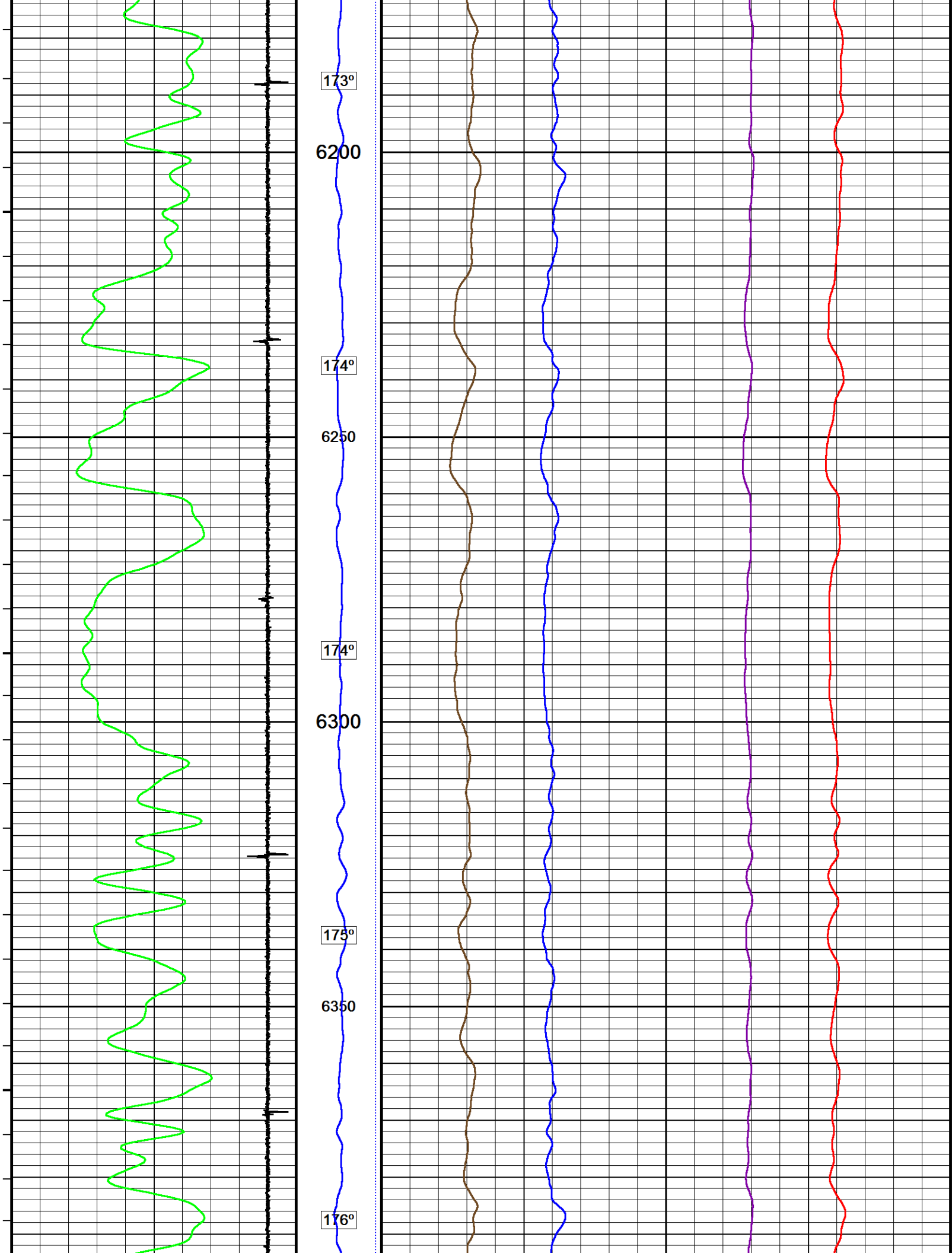


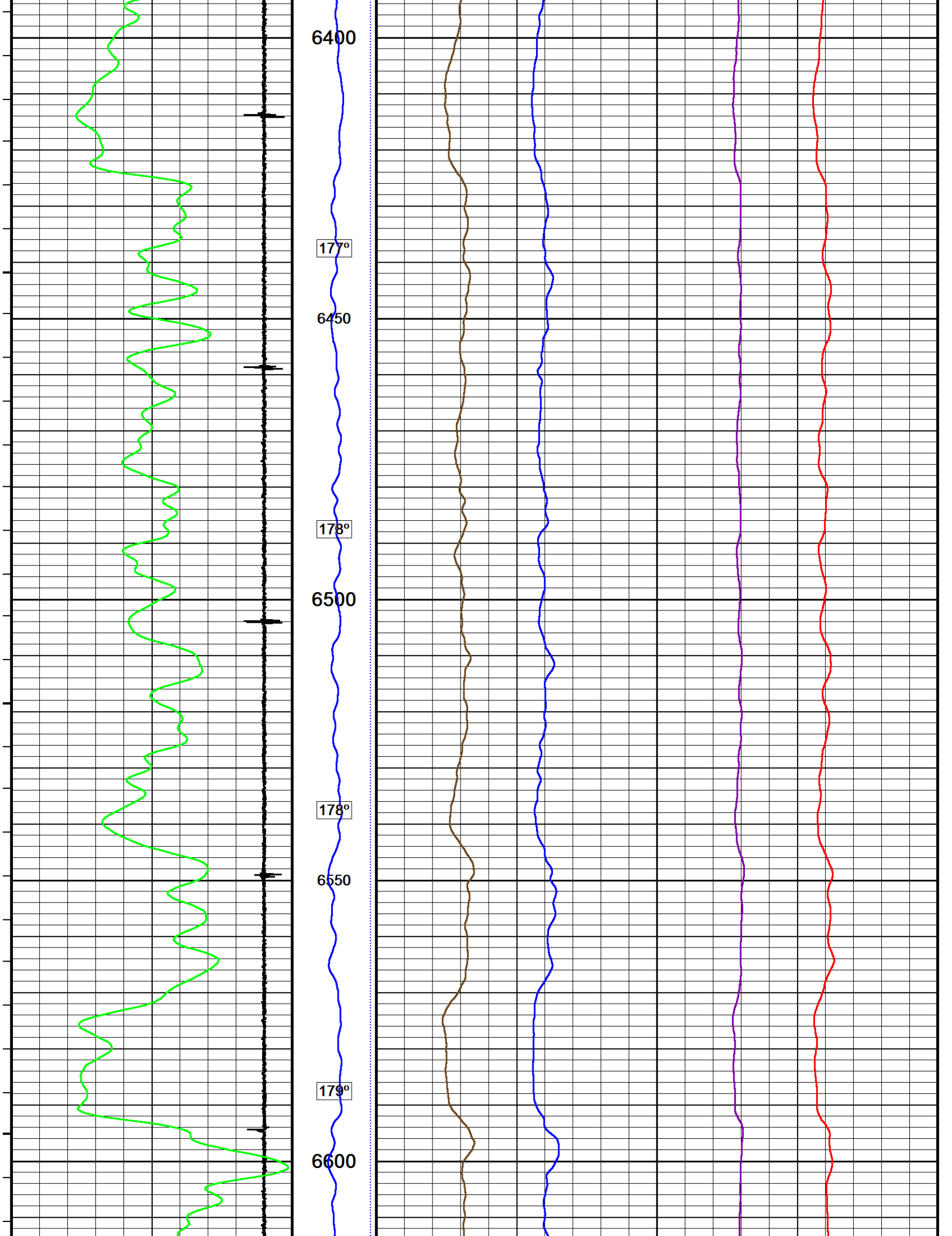


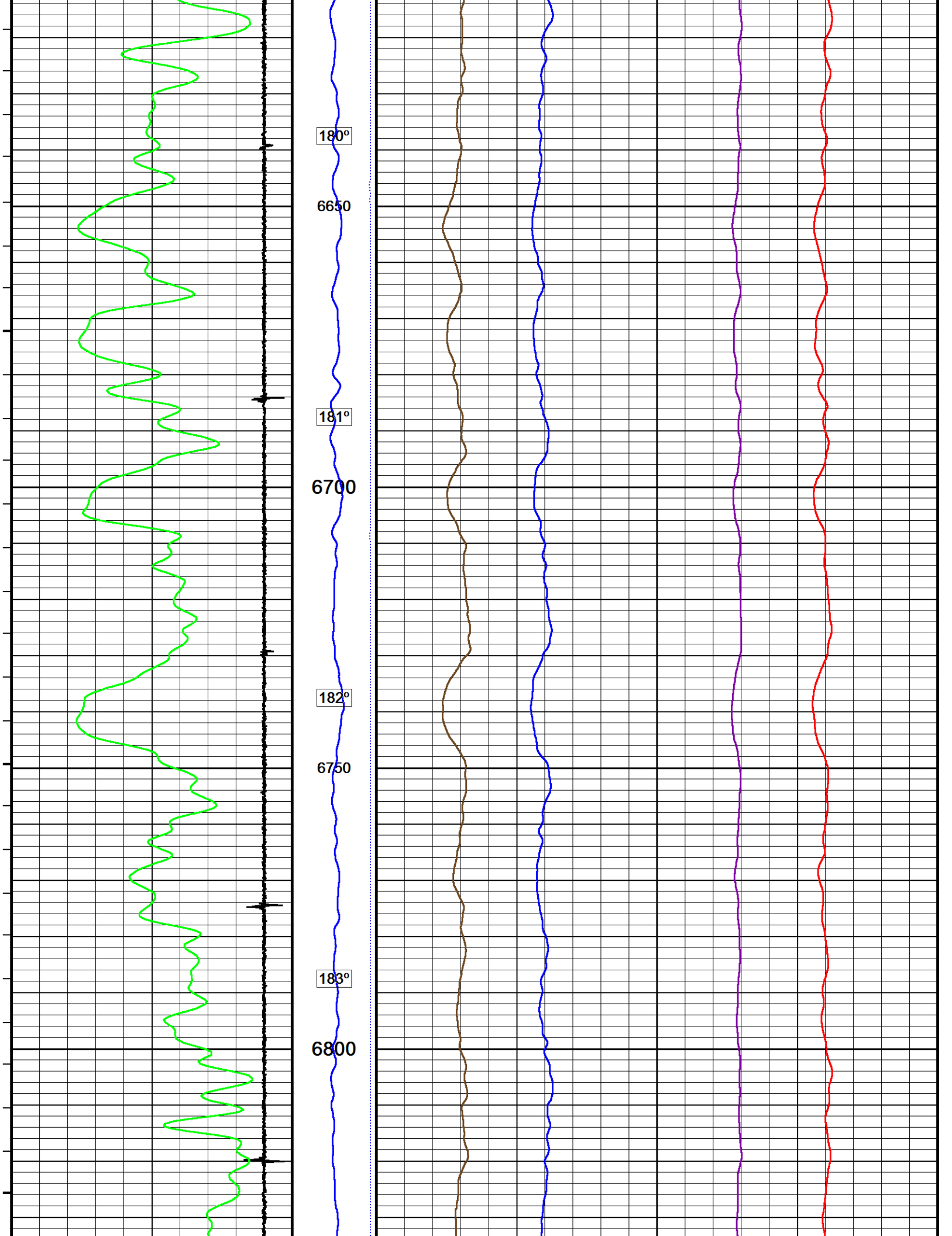


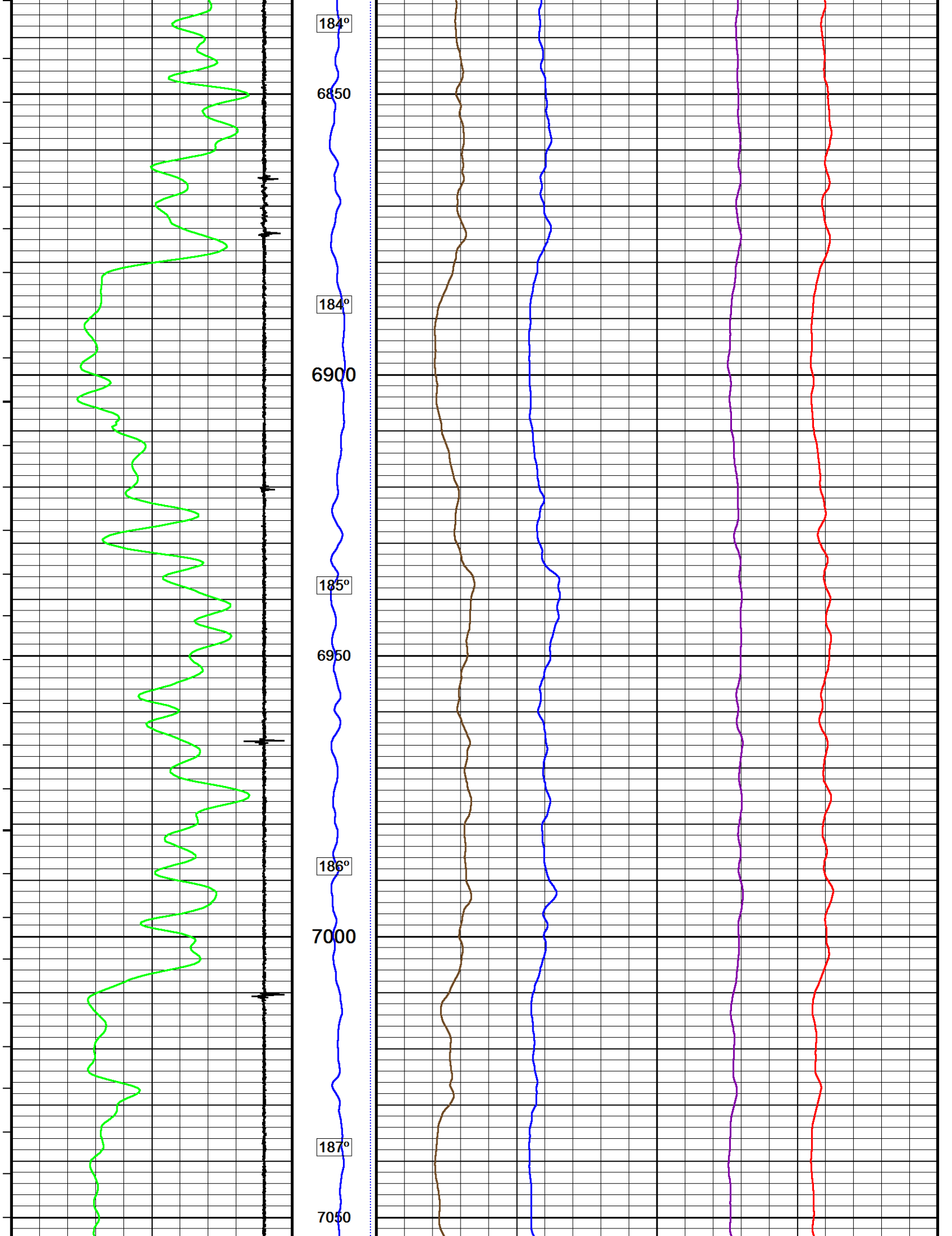


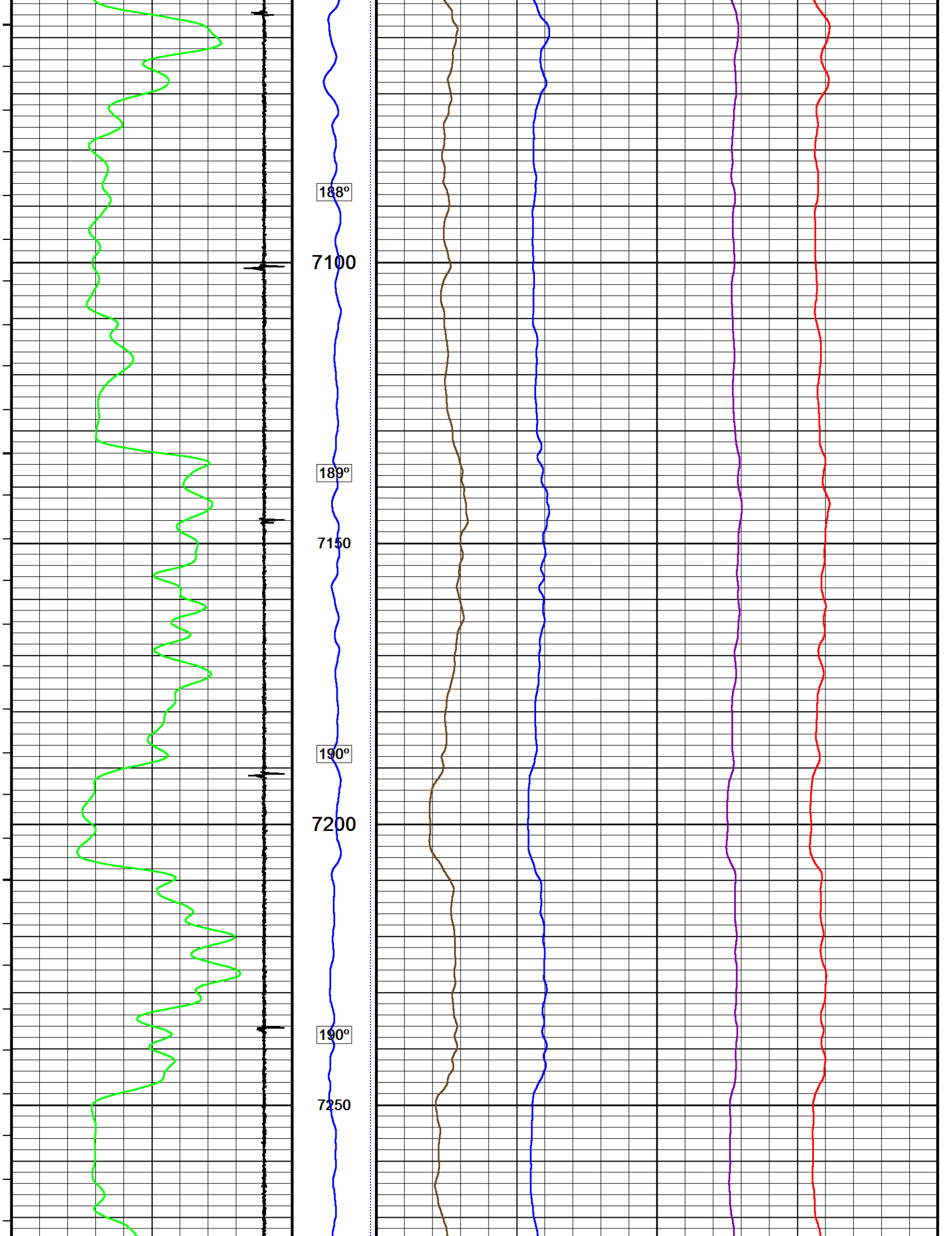


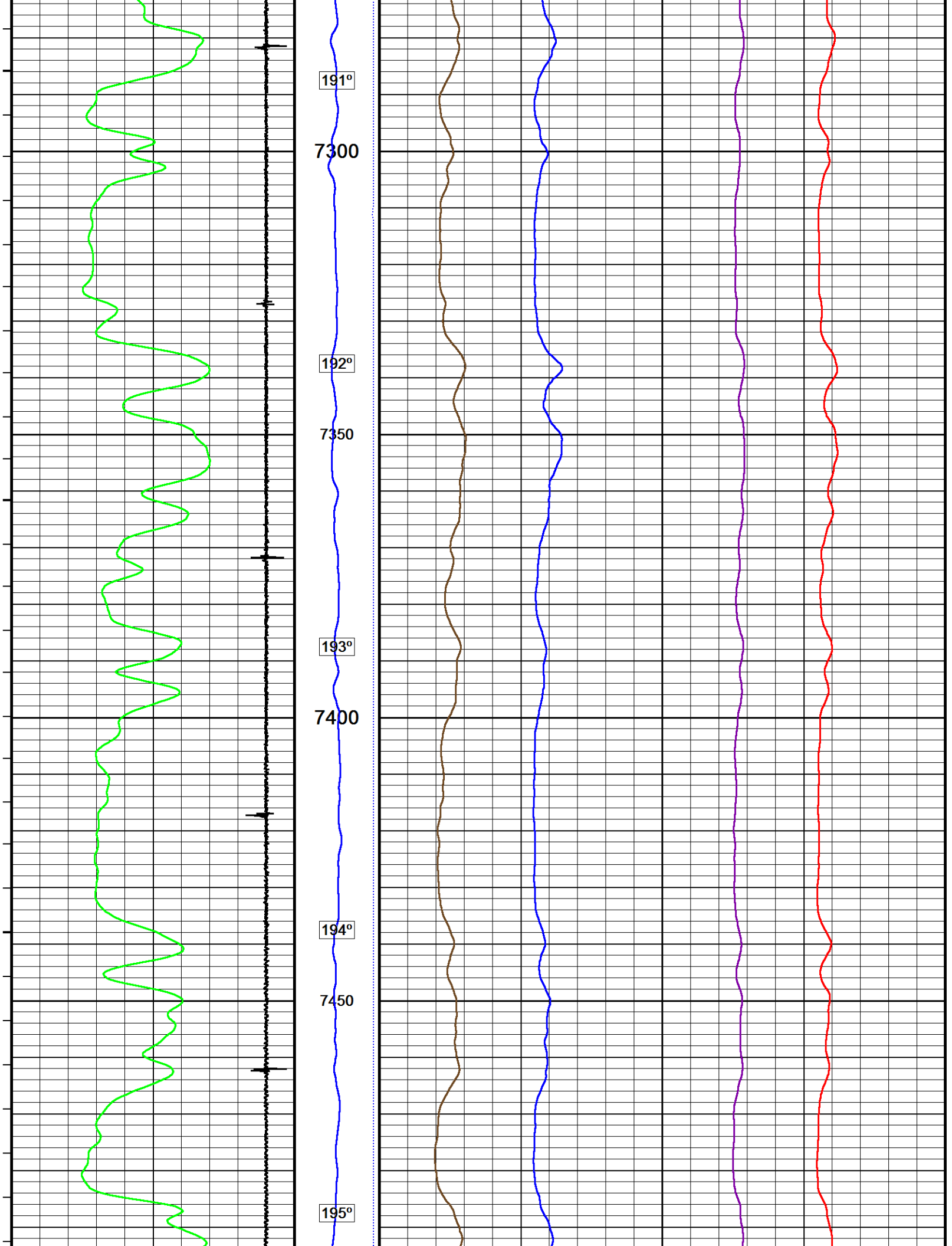


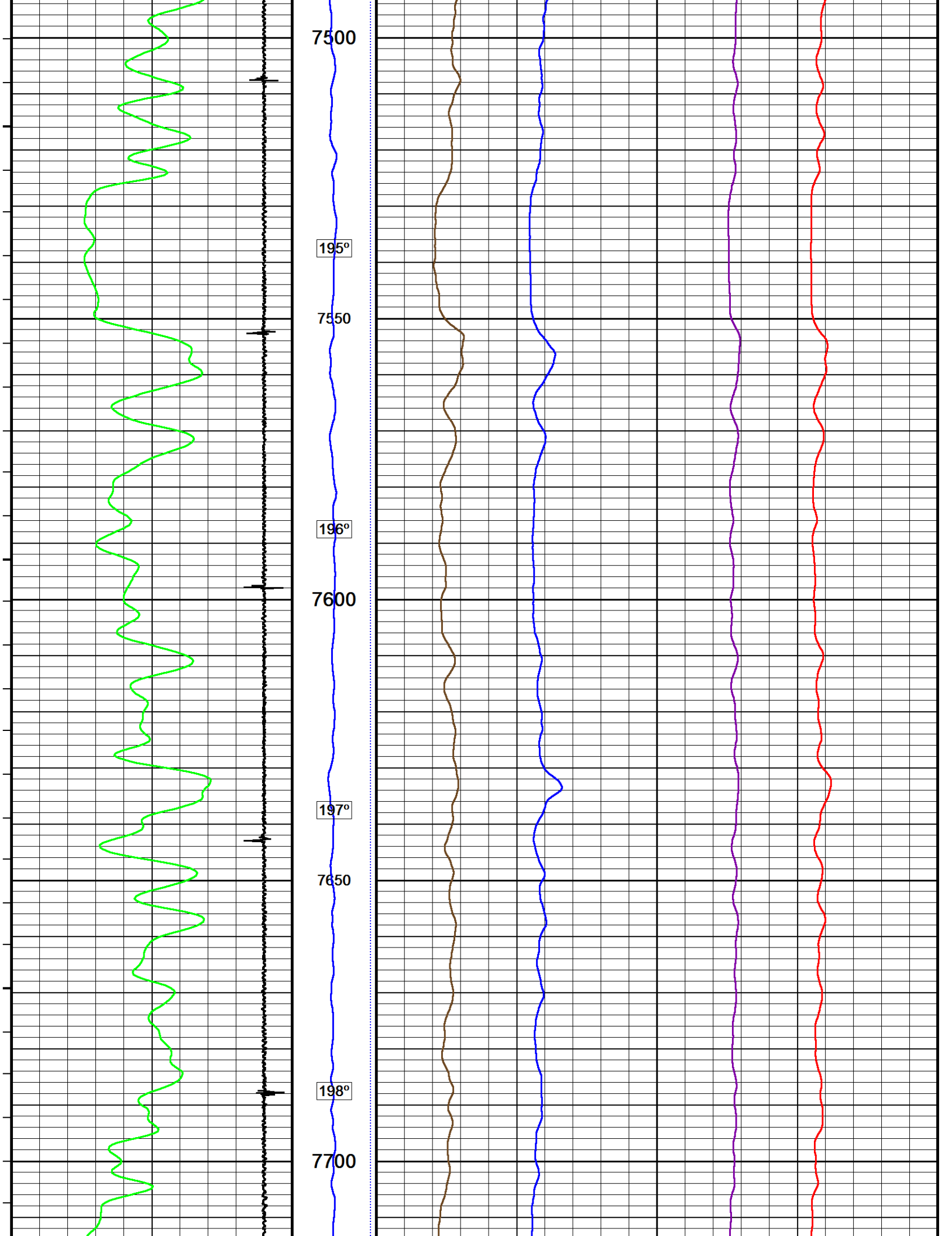


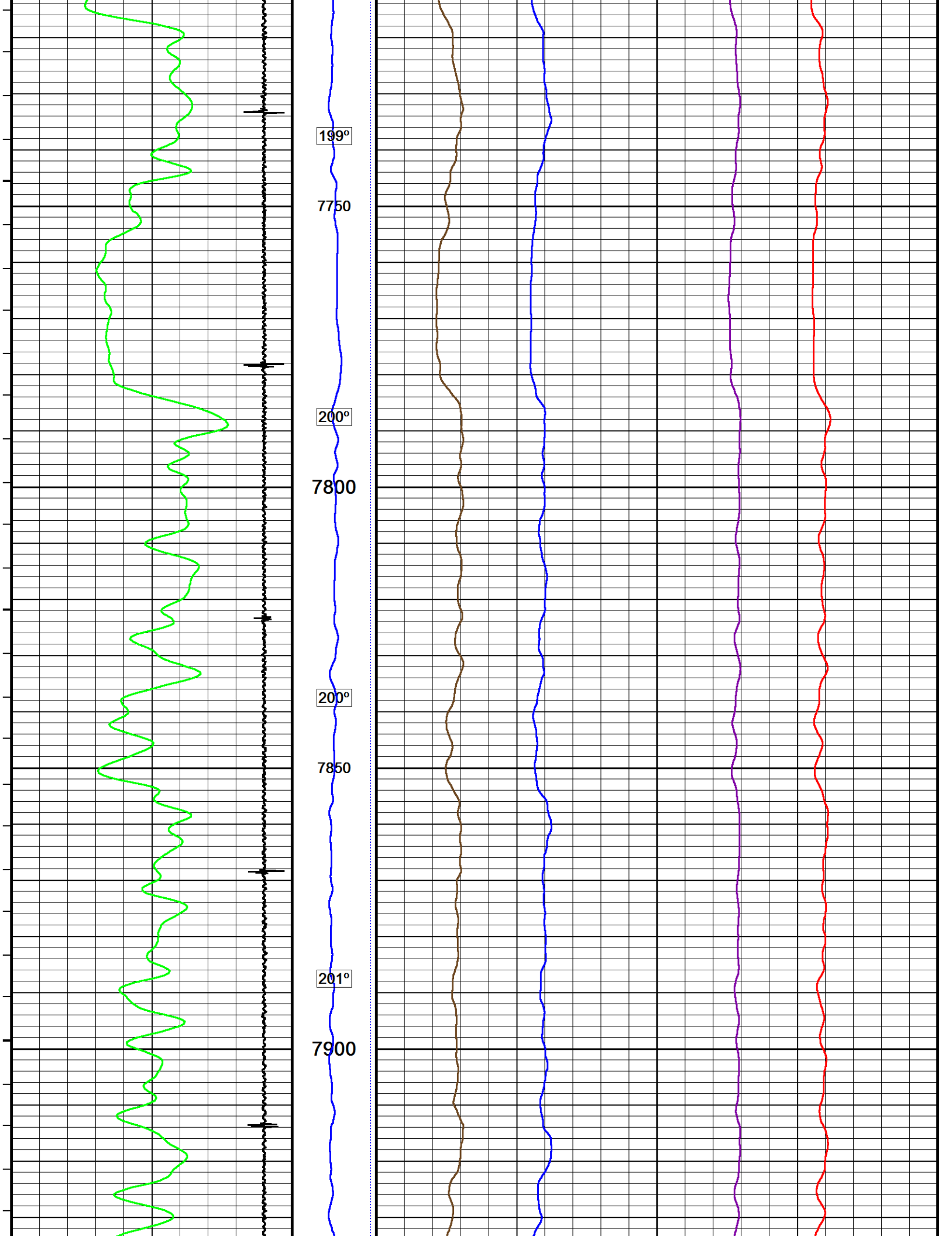


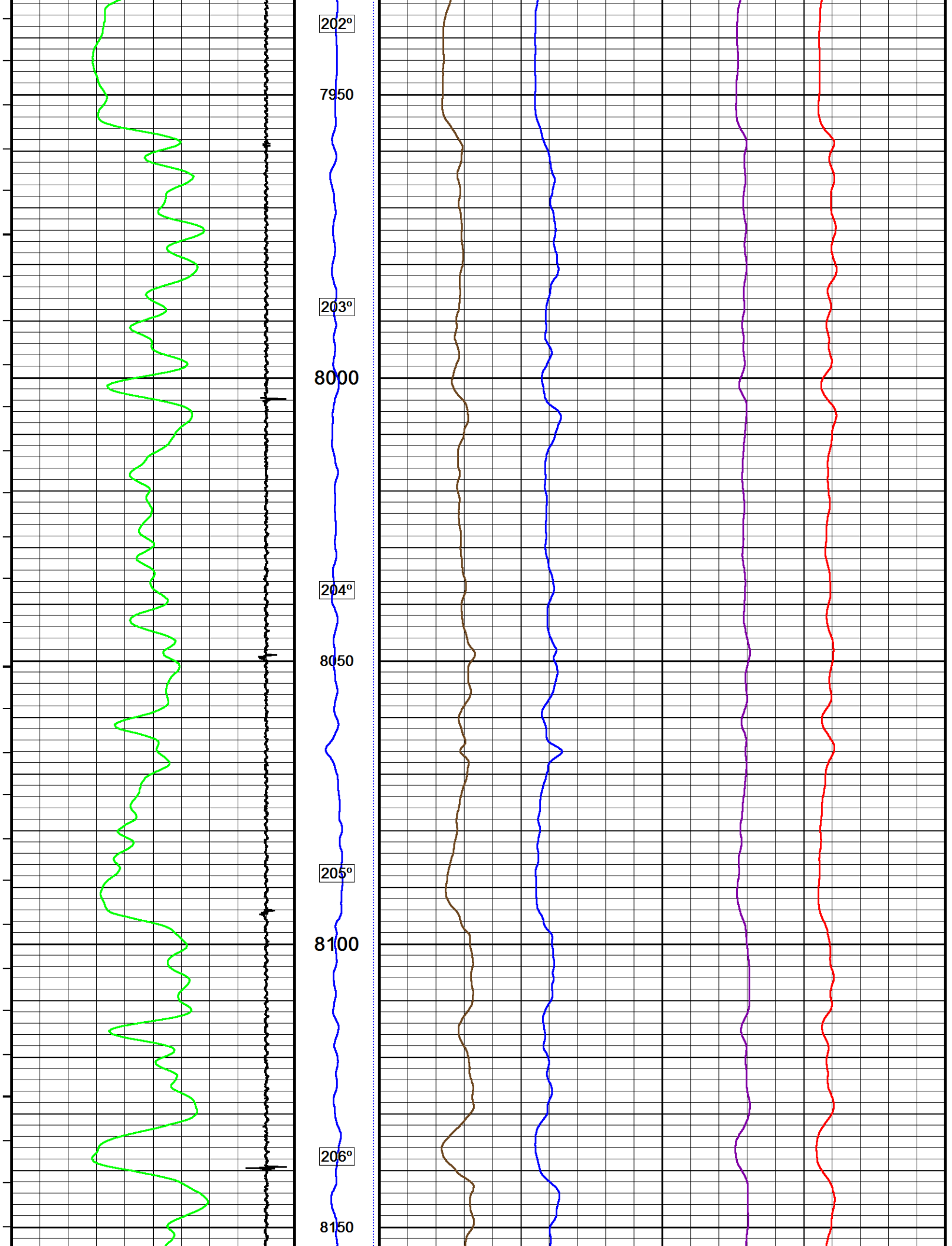


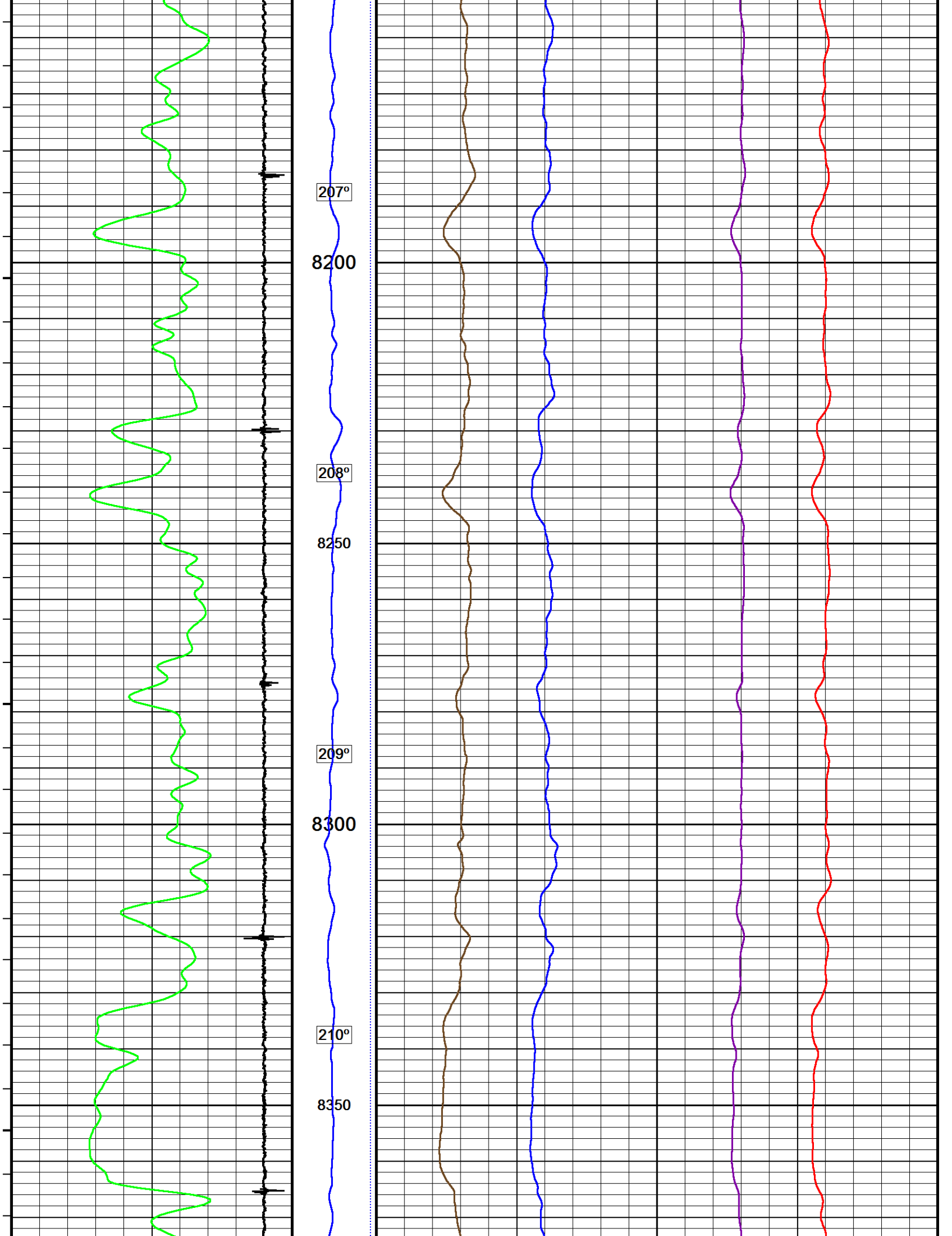


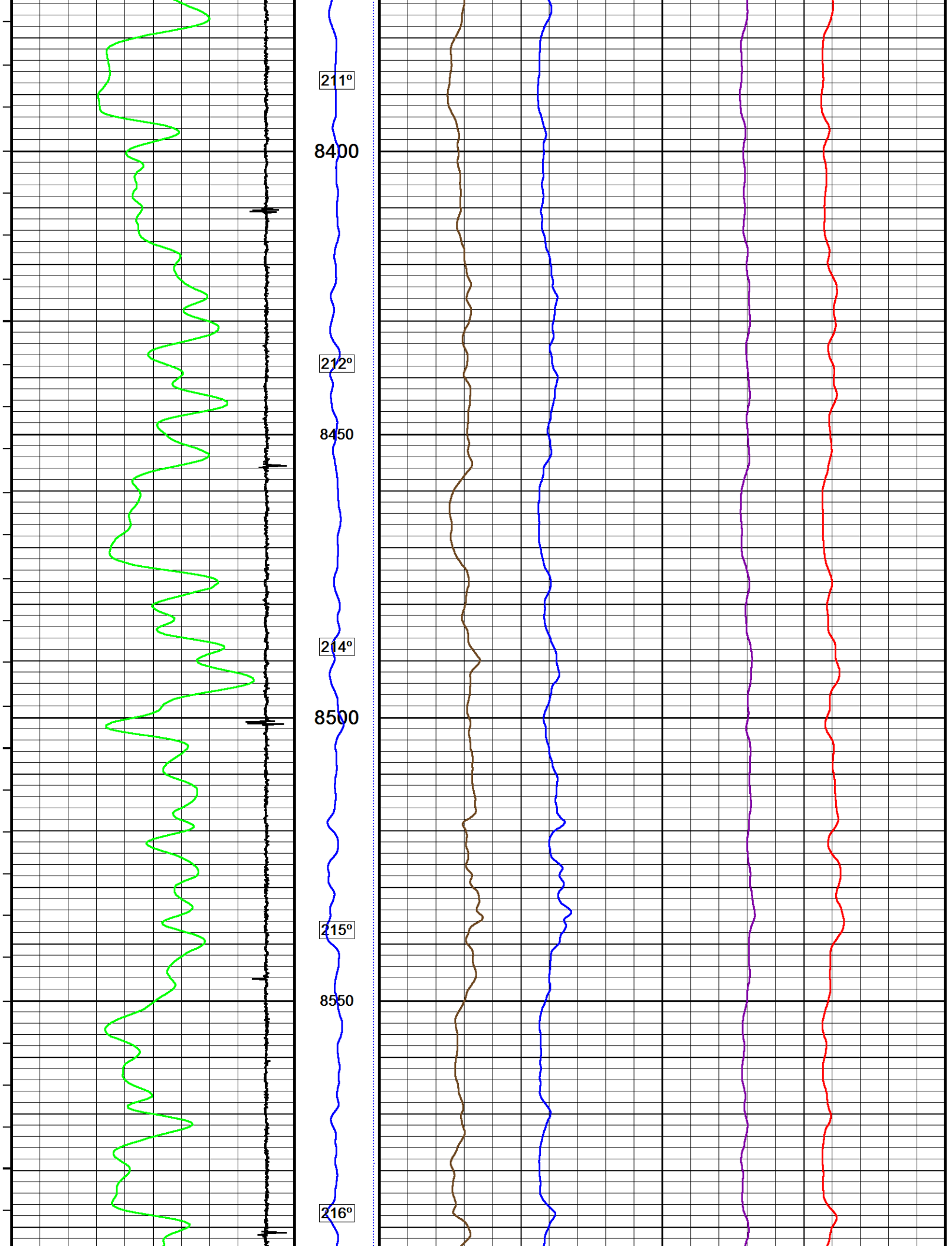


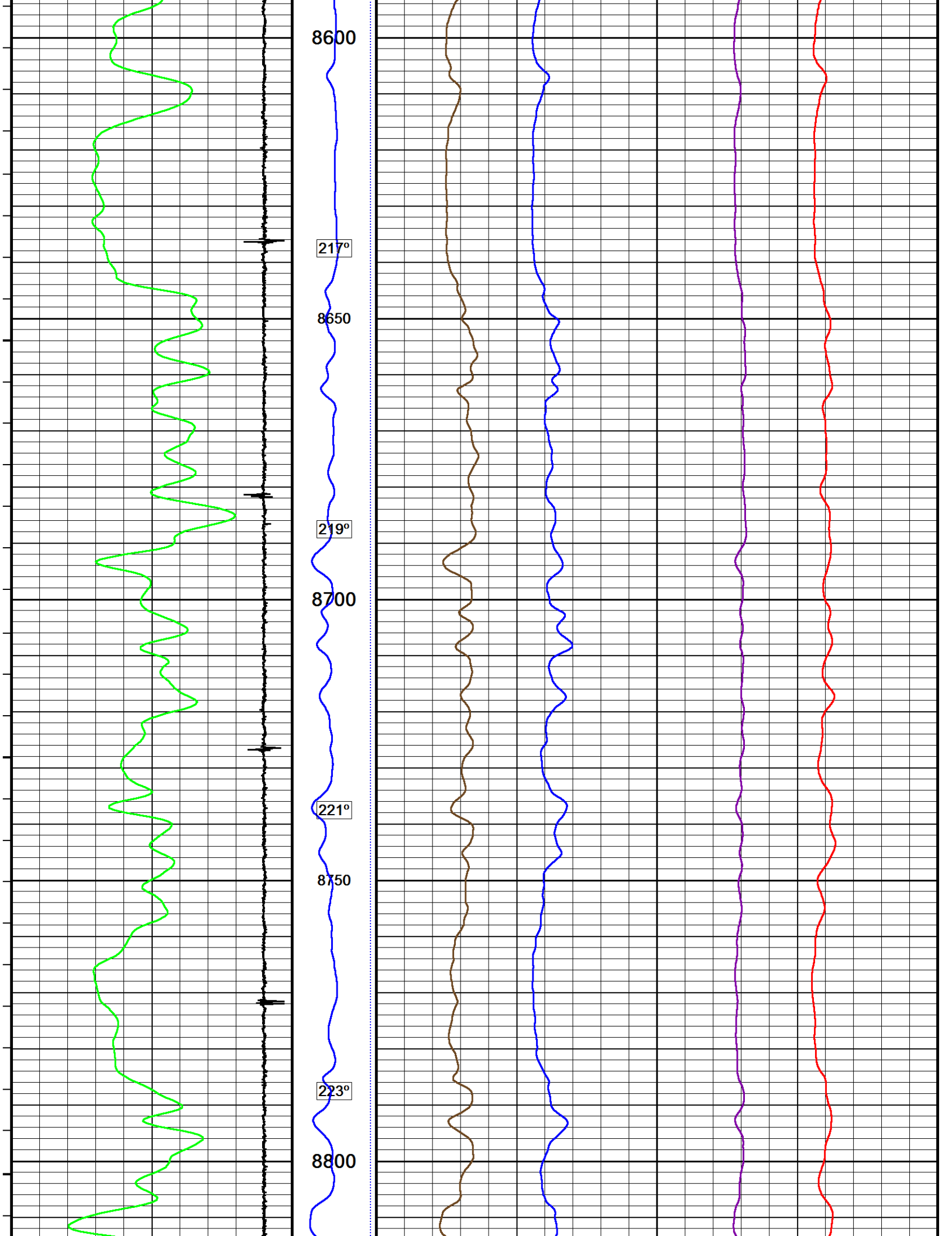


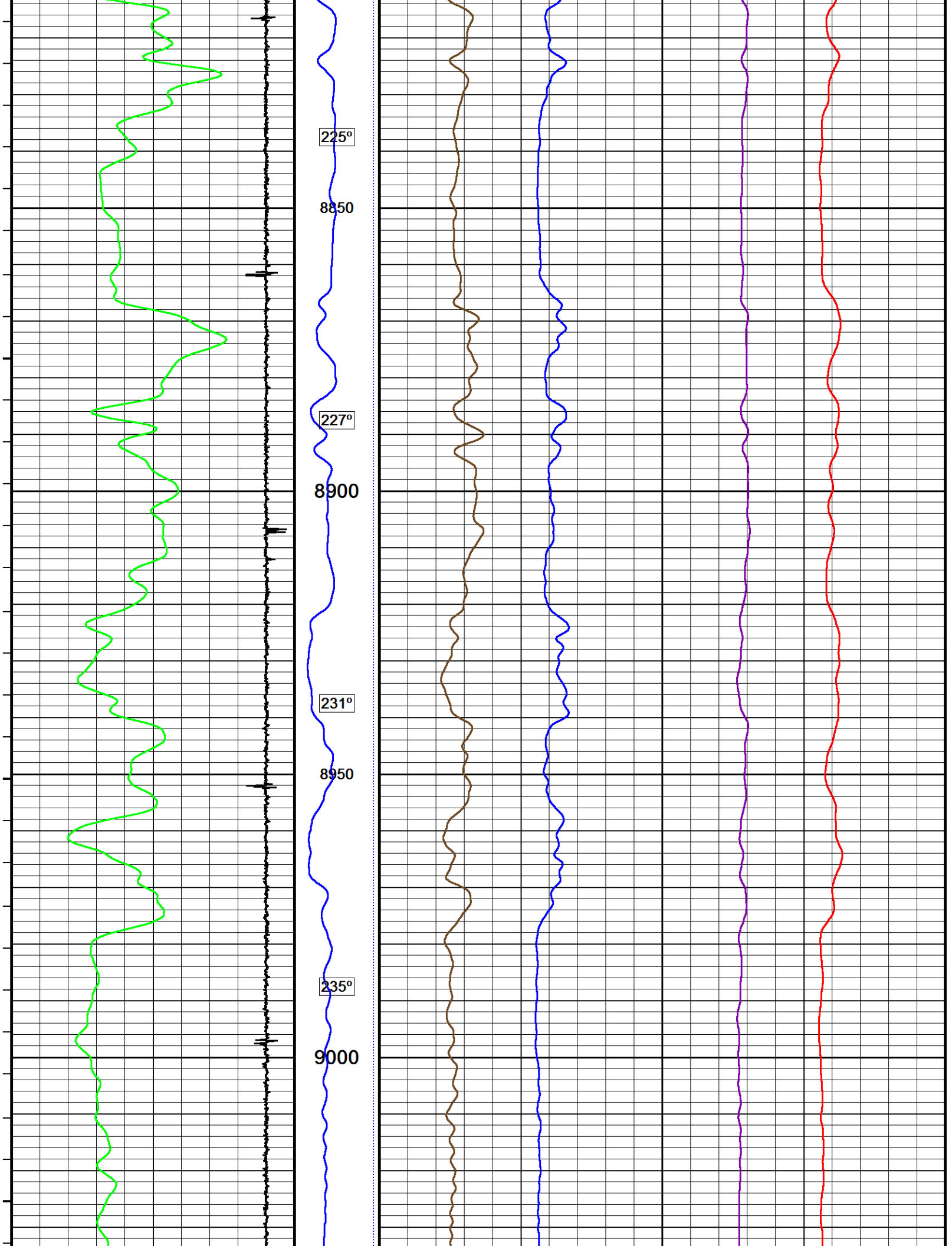


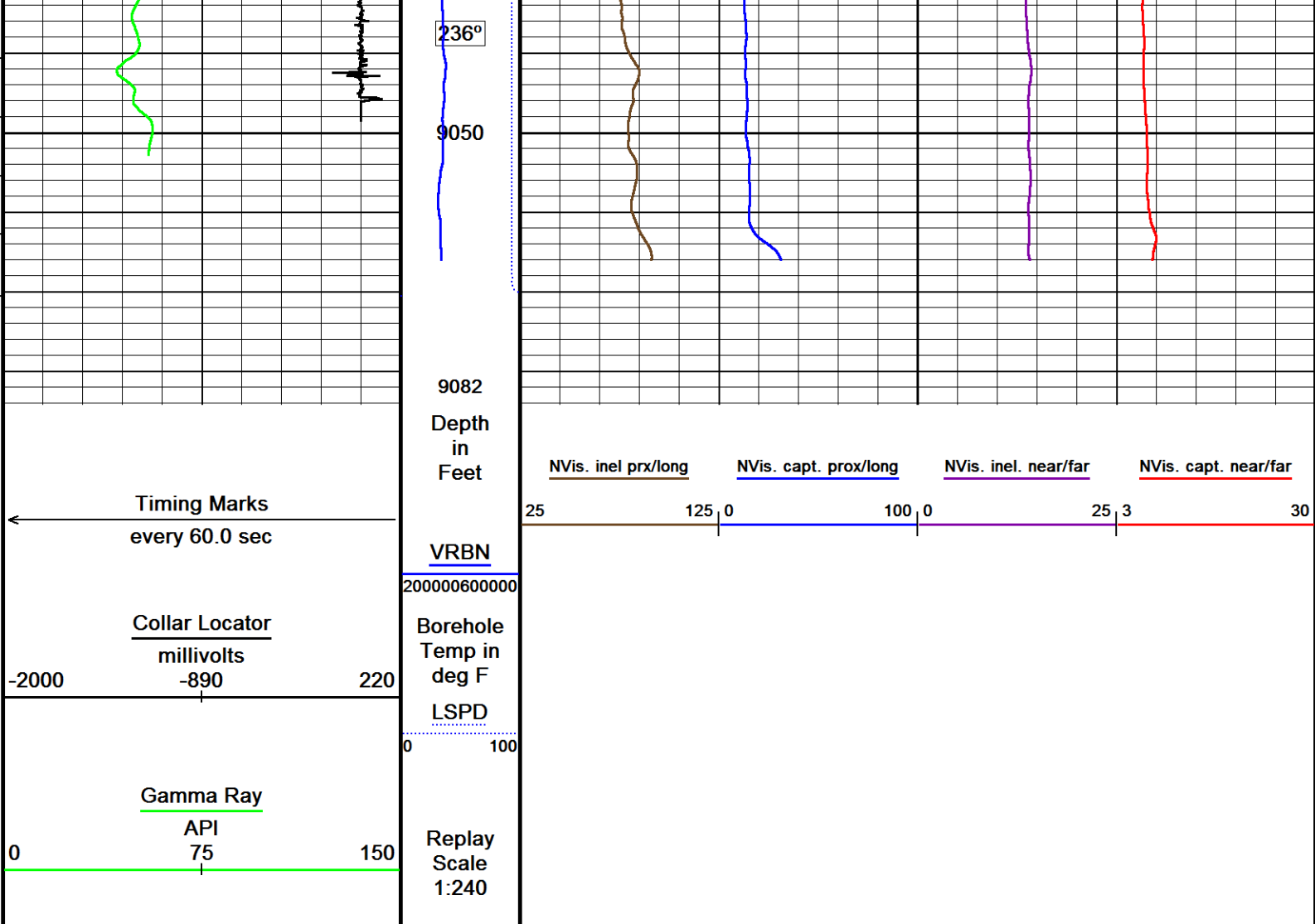










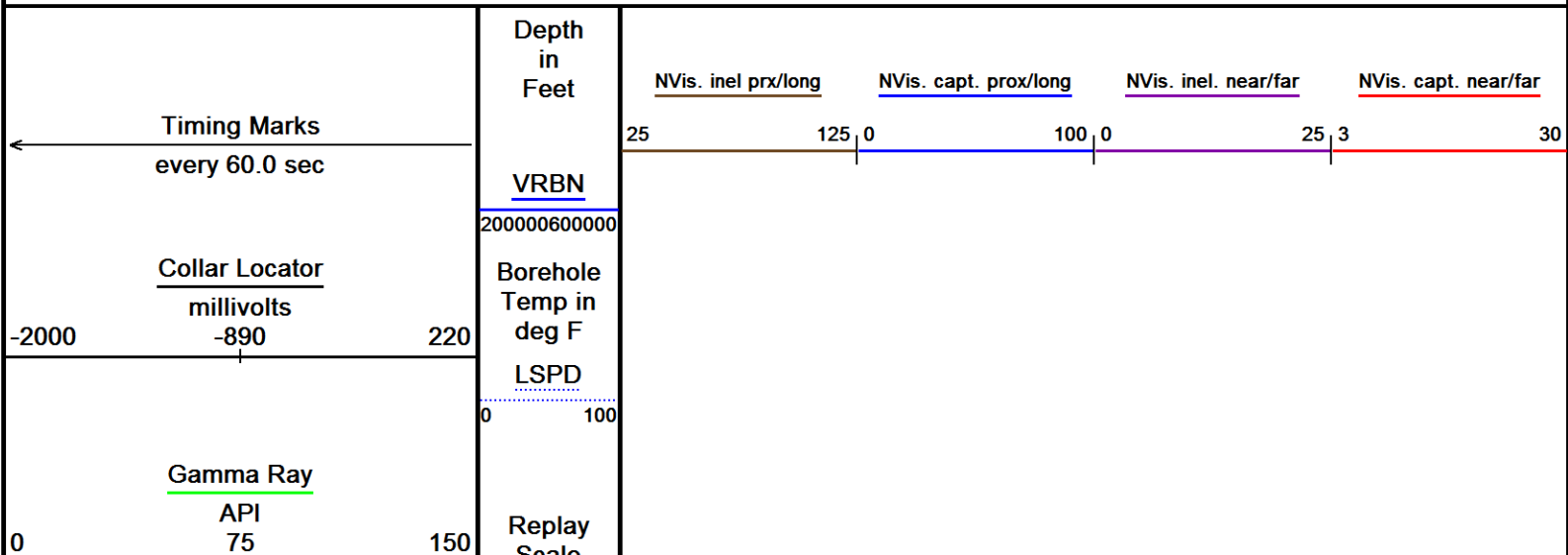


Depth Based Data - Maximum Sampling Increment 12.5cm
Filename: F:\PUCKETT_22C_26_CRE\PUCKETT_22C_26_CREB_NVISION_MAIN.dta
Filename: F:\PUCKETT_22C_26_CRE\PUCKETT_22C_26_CREB_NVISION_REPEAT.dta
System Versions: Logged with 17.01.6744 Plotted with 17.01.6744

MAIN PASS
REPEAT PASS

REPEAT PASS

Depth Based Data - Maximum Sampling Increment 12.5cm
Filename: F:\PUCKETT_22C_26_CRE\PUCKETT_22C_26_CREB_NVISION_REPEAT.dta
System Versions: Logged with 17.01.6744 Plotted with 17.01.6744



Scale
1:240

4968

5000

149°

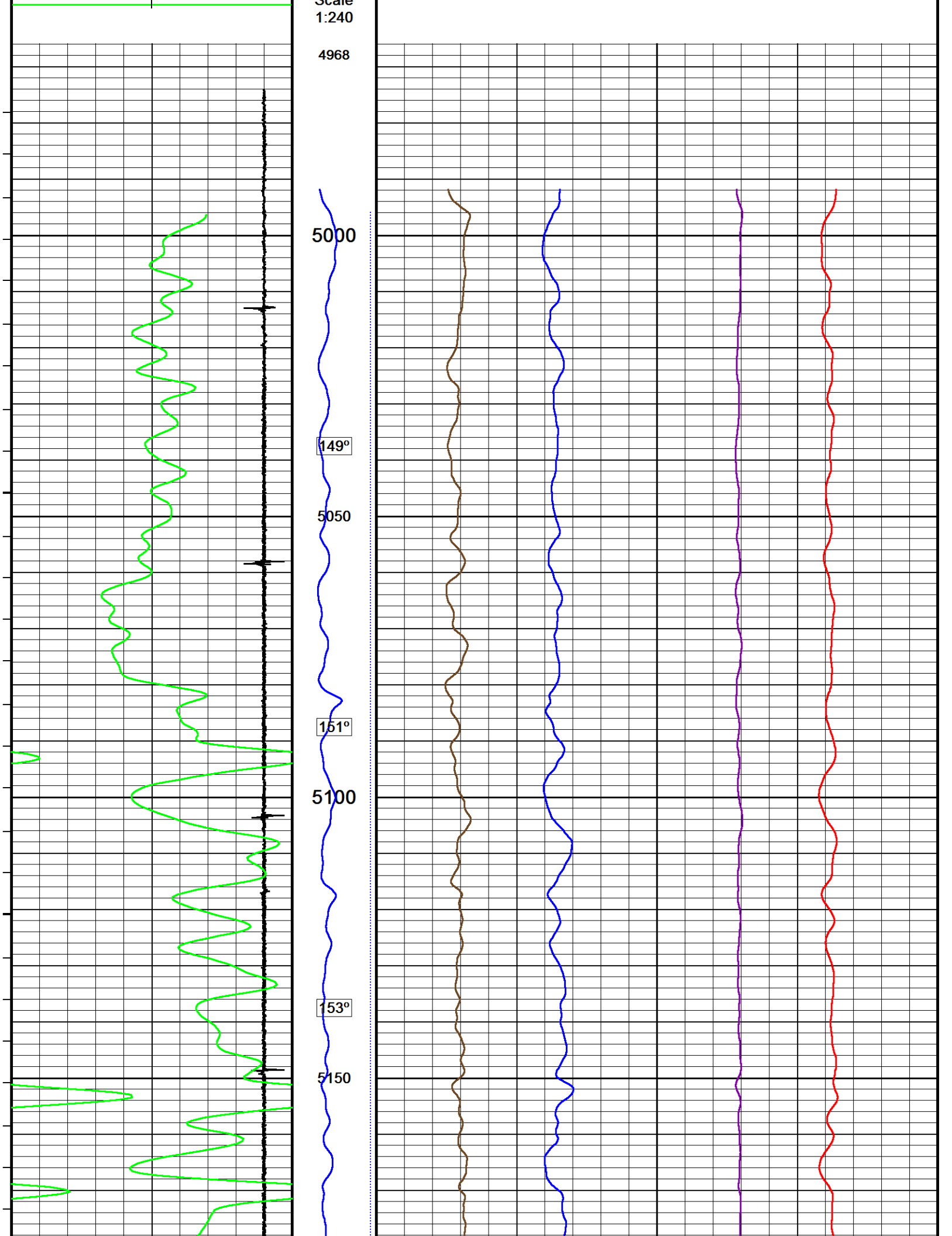
5050

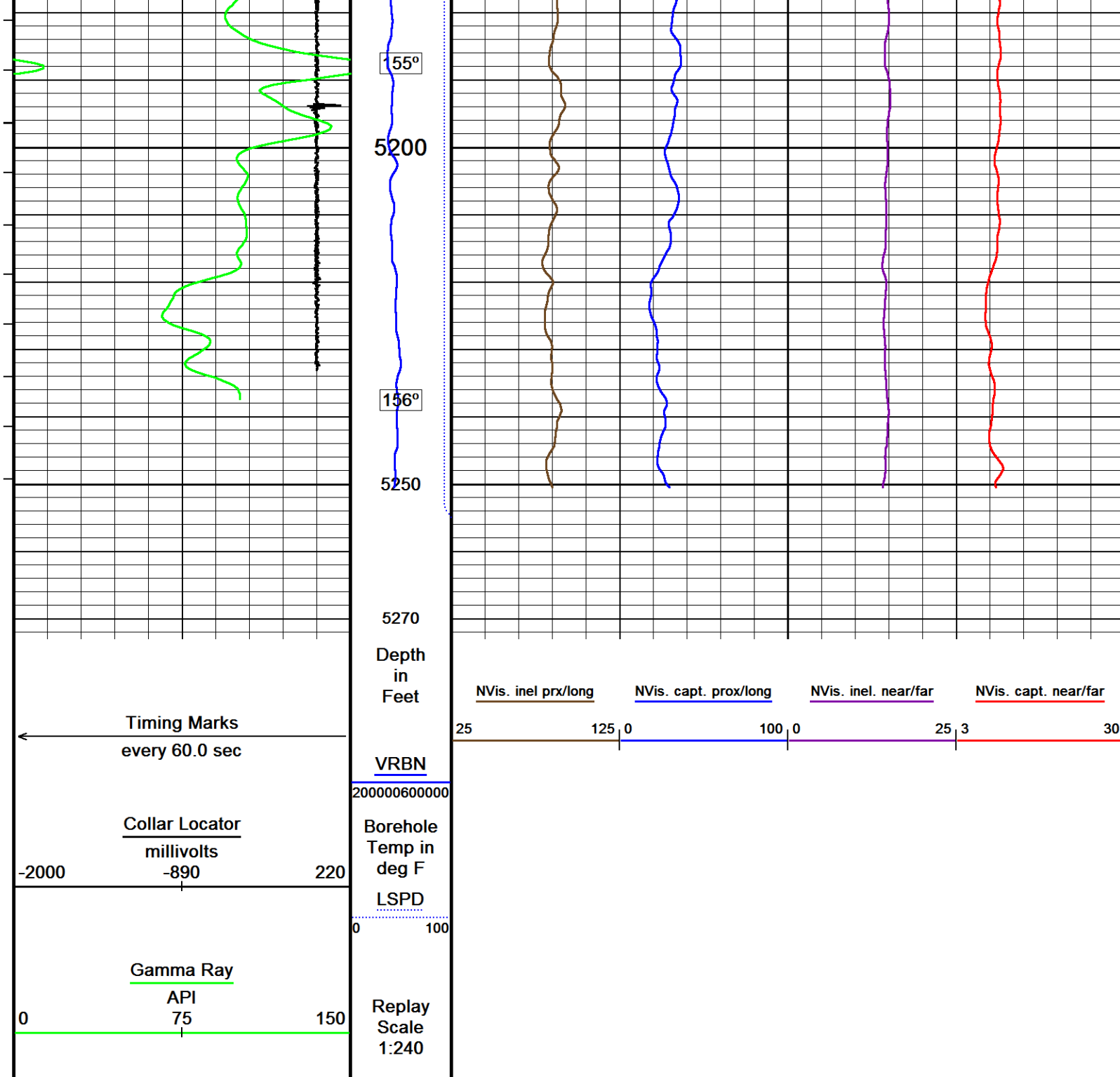
151°

5100

153°

5150





Depth Based Data - Maximum Sampling Increment 12.5cm
Filename: F:\PUCKETT_22C_26_CRE\PUCKETT_22C_26_CREB_NVISION_REPEAT.dta
System Versions: Logged with 17.01.6744 Plotted with 17.01.6744

↑ REPEAT PASS ↑

DOWNHOLE EQUIPMENT

F:\PUCKETT_22C_26_CRE\PUCKETT_22C_26_CREB_NVISION_MAIN.dta

Mono-Cablehead
MCH-AA 0 LG: 1.03 ft WT: 2.2 lb OD: 1.457 in

Comm Sub
WCC-CB 130 LG: 5.97 ft WT: 24.3 lb OD: 1.693 in



Gamma Ray K
UGR-KA 108 LG: 2.34 ft WT: 17.6 lb OD: 1.693 in

Quartz Press, Dual ITB, 43mm
QPG-EA 141 LG: 2.23 ft WT: 8.8 lb OD: 1.693 in

Tool Temperature, 43mm, 177C, 10-pin ITB
TMP-NA 137 LG: 1.93 ft WT: 8.8 lb OD: 1.693 in

CRE series II processor section
CRP-BA 129 LG: 3.31 ft WT: 15.4 lb OD: 1.654 in

Casing Reservoir Evaluation Tool Sonde
CRM-BA 129 LG: 9.19 ft WT: 46.3 lb OD: 1.693 in

Gamma Ray K
UGR-KA 131 LG: 2.34 ft WT: 17.6 lb OD: 1.693 in

Terminator sub
TSH-C 0 LG: 0.27 ft WT: 2.2 lb OD: 1.654 in

Total Length: 28.60 ft Weight: 143.3 lb

22.43 ft CCL - Collar Locator

19.99 ft GR - Gamma Ray

15.59 ft TMPN - Temperature

7.52 ft VC15 - NVis. capt. prox/long
7.52 ft VB24 - NVis. incl. near/far
7.52 ft VB15 - NVis. incl prx/long
7.52 ft VC24 - NVis. capt. near/far
7.52 ft VRBN - VRBN

Tool Zero (0.00ft from bottom)
All measurements relative to tool zero.

UGK Before Survey Cal UGR-KA 108

Field Calibration on 26-APR-2017 13:22

Gamma Ray Before Survey Calibration

Tool Type: UGR-KA
Calibrator No: MCGGRCC144

Serial No: 108

Background	Calibrator	Standard	Units
------------	------------	----------	-------

39.7	852.4	486.5	API
------	-------	-------	-----

Delta Counts Per Sec: 812.7 CPS/API = 1.671

Temperature Tool Shop Survey Calibration TMP-NA 137

Temperature Tool Shop Survey Calibration

Tool Type: TMP-NA

Serial No: 137

calibration

Standard

Measured

32 DEGF

36714 Hz

212 DEGF

50849 Hz

UGK Before Survey Cal UGR-KA 131

Field Calibration on 26-APR-2017 13:52

Gamma Ray Before Survey Calibration

Tool Type: UGR-KA
Calibrator No: MCGGRCC144

Serial No: 131

Background	Calibrator	Standard	Units
------------	------------	----------	-------

27.9	848.9	486.5	API
------	-------	-------	-----

Delta Counts Per Sec: 821.0 CPS/API = 1.688

COMPANY	CAERUS OIL & GAS
WELL	PUCKETT 22C-26
FIELD	GRAND VALLEY
PROVINCE/COUNTY	GARFIELD
COUNTRY/STATE	USA / COLORADO

Elevation Kelly Bushing	8426	feet	Bottom Log Interval	9070.00	feet
Elevation Drill Floor	8426	feet	Depth Driller	9099.00	feet
Elevation Ground Level	8206	feet	Depth Logger	9070.00	feet



Weatherford®

RAPTOR NVISION LOG